



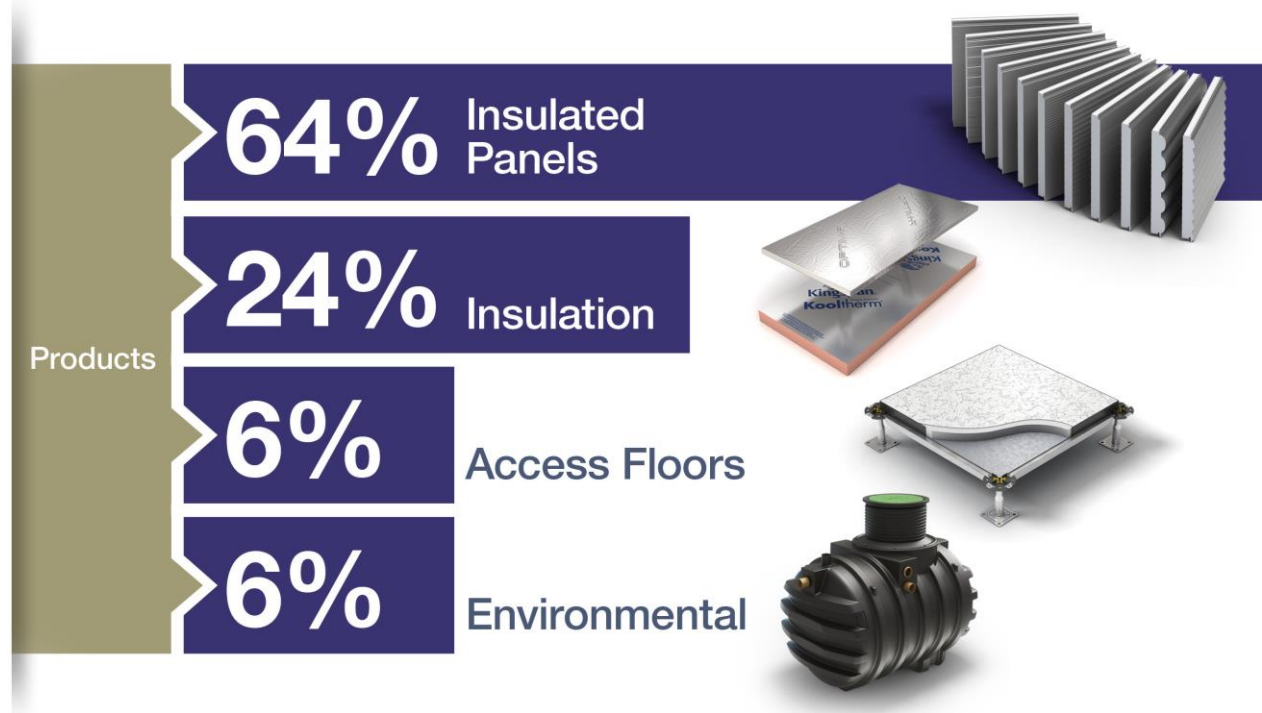
Kingspan AGM
5th May 2016



Forward Looking Statements

This presentation contains certain forward-looking statements including, without limitation, regarding the Group's financial position, business strategy, plans and objectives of management for future operations. Such forward-looking information involves risks and uncertainties, assumptions and other factors that could cause the actual results, performance or achievements of the Group to differ materially from those in the forward-looking statements. The forward-looking statements in this presentation reflect views held only as of the date hereof. Neither Kingspan nor any other person gives any representation, assurance or guarantee that the occurrence of the events expressed or implied in any forward-looking statements in this presentation will actually occur. Kingspan undertakes no duty to and will not necessarily update any such statements in light of new information or future events, except to the extent required by any applicable law or regulation.

- ❖ A global leader in high performance insulation and building envelopes
- ❖ Market leading positions in UK, Mainland Europe, North America and Australasia
- ❖ Proprietary technology drives differentiation in product performance



What We Deliver



Excellence
in Energy



Architectural
Inspiration



Fully Integrated
Envelope Solutions



Building
Science



Comfort
& Savings

Revenue up 25% to €903m

+27% at constant currency

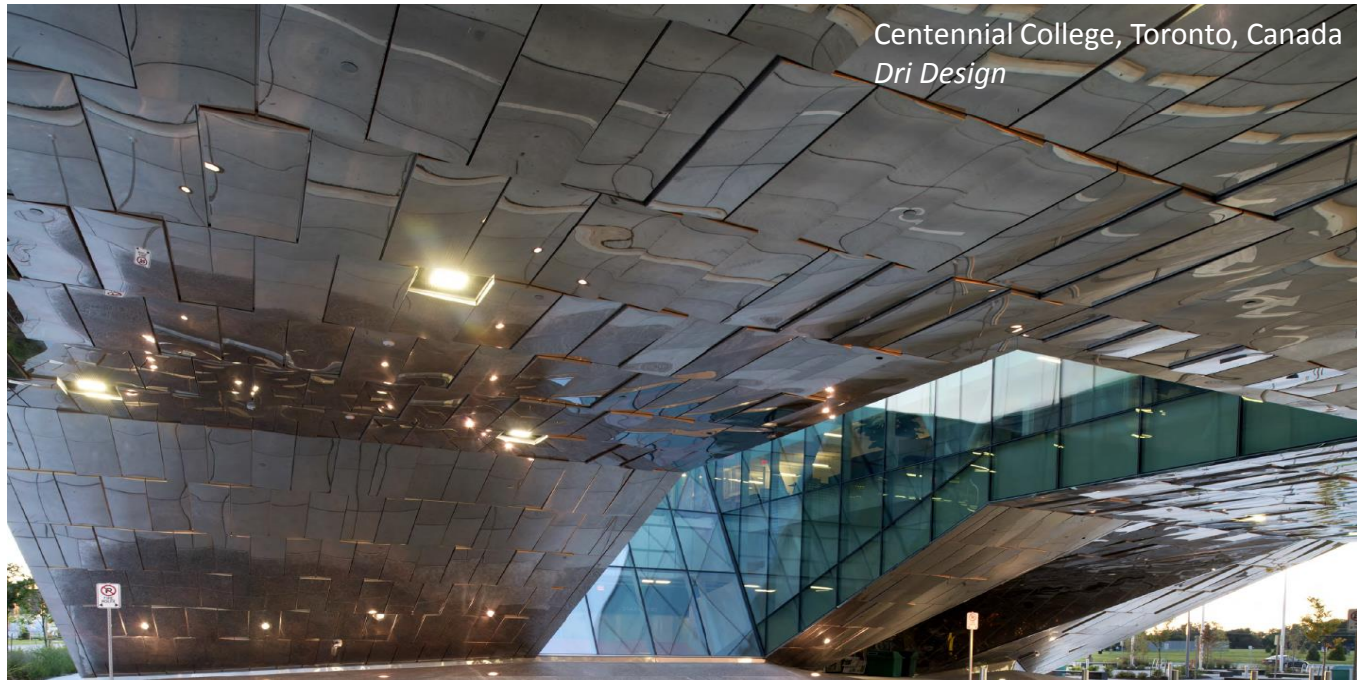
+8% pre-acquisition & at constant currency

Insulated Panels	+37%
Insulation	+11%
Access Floors	+6%
Environmental	-3%

**01-01-16 to 30-04-16*

Key Themes 2015/2016

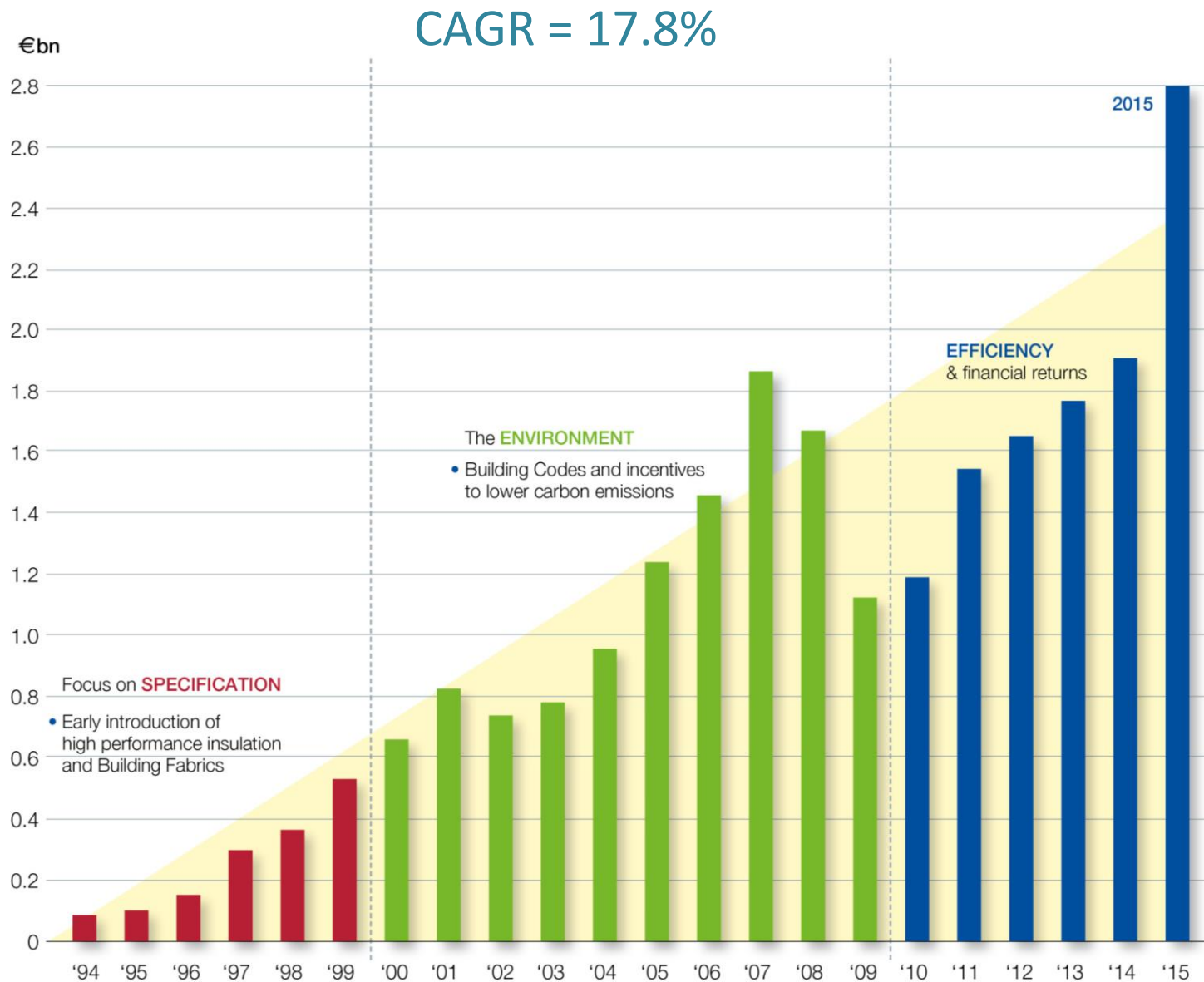
- ❖ Strong organic growth in UK and US
- ❖ Improving Western Europe momentum, particularly the Netherlands and France
- ❖ Germany and Eastern Europe solid
- ❖ Middle East and Australasia activity mixed but relatively flat
- ❖ Penetration growth in all regions
- ❖ Healthy order book overall



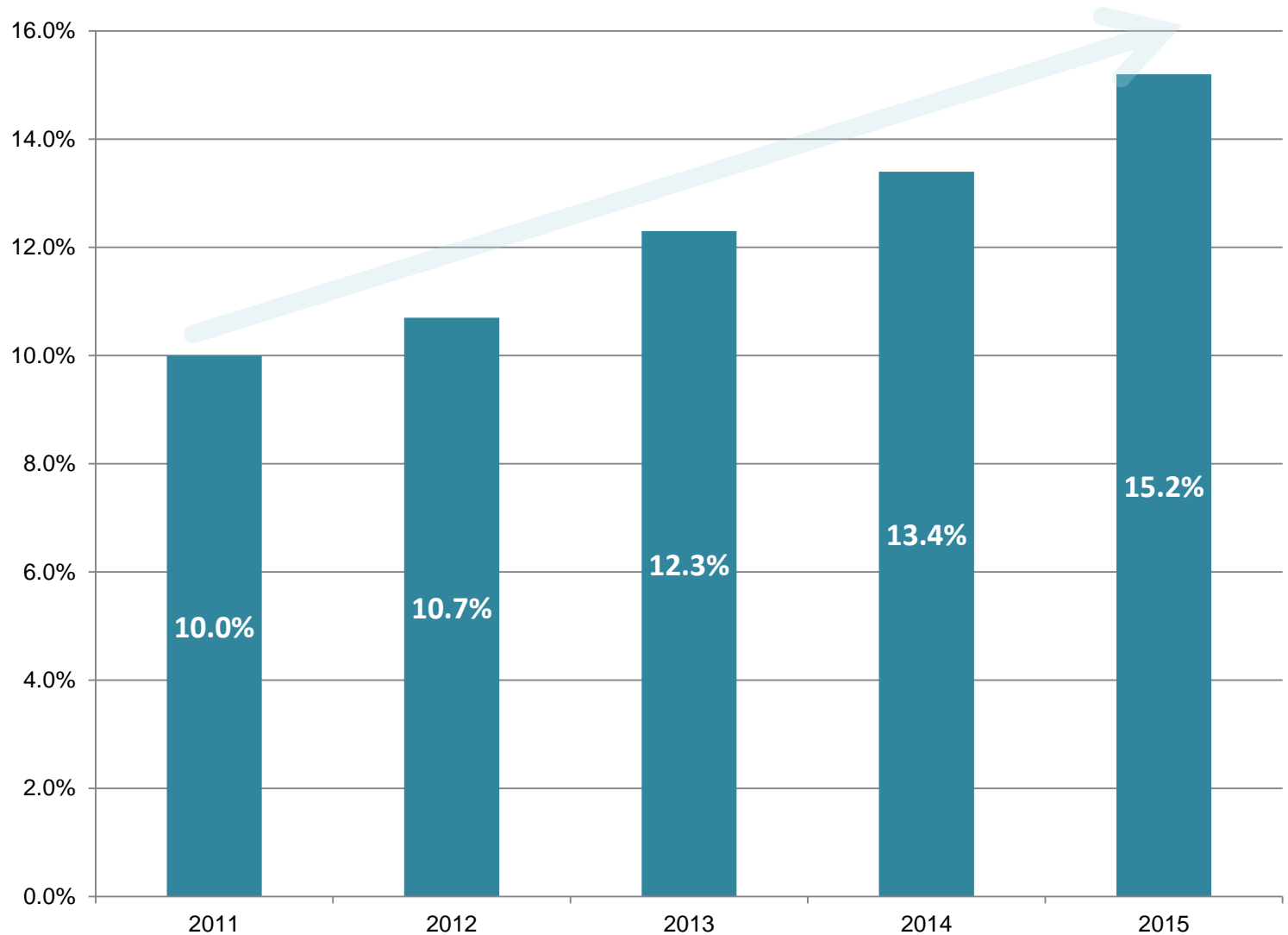
Global Organic Expansion



Our Evolution - Financial



Growing ROCE



Harvard Business School, Boston, USA
Kingspan Solar



Western Australia Institute of Sport

Insulated Panels

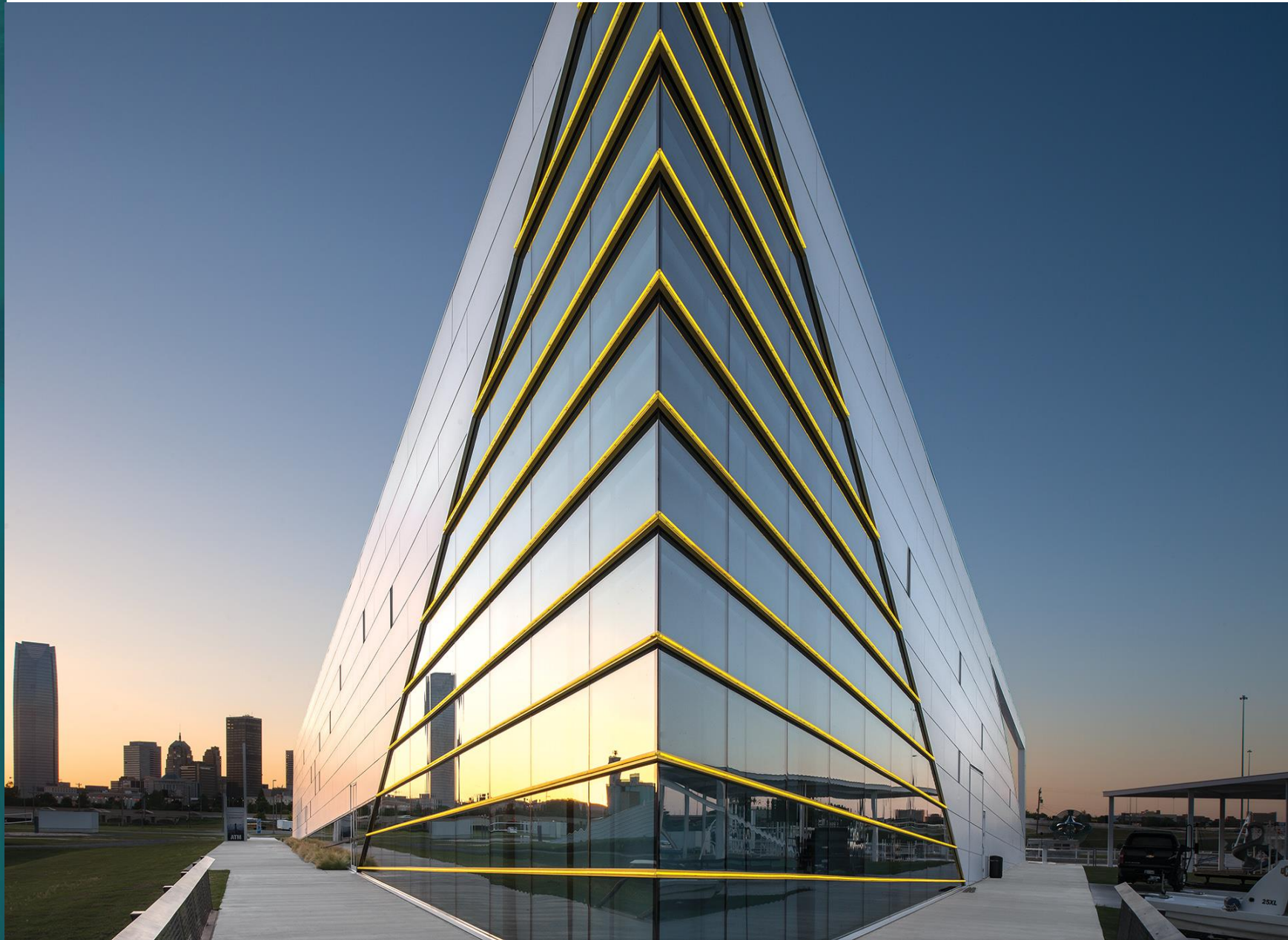


Australian National Maritime Museum

Insulated Panels



Central Boathouse, University of Central Oklahoma, US
Insulated Panels



Adobe Software, Lehi, Utah, USA

Dri Design



King Abdulaziz Centre for World Culture, Saudi *Insulation*



Marina Bay Sands, Singapore

Insulation



Kingspan Group plc

Dublin Road, Kingscourt, Co. Cavan, Ireland

Telephone: +353 42 969 8000

Fax: +353 42 966 7501

Email: admin@kingspan.com

www.kingspan.com

