

C.J. "Pete" Silas Boys & Girls Club



Location
Bartlesville, Oklahoma USA

Wall Products
BENCHMARK DesignWall 2000

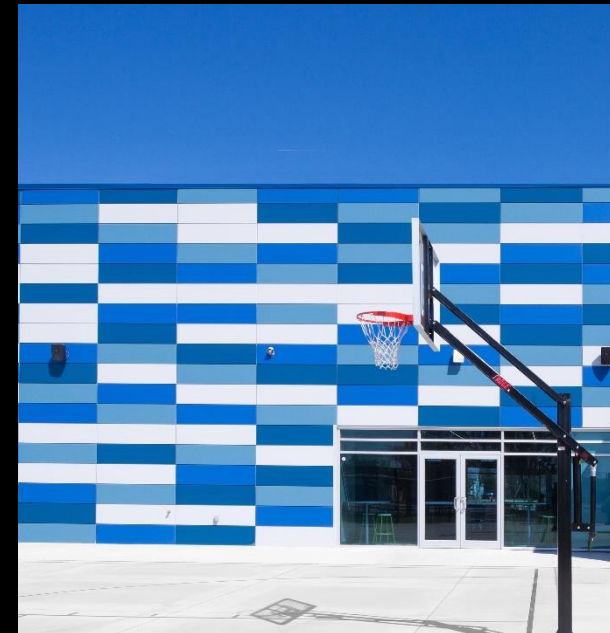
Finishes
Light Gray
Arabian Blue
Deep Sea Blue
Slate Blue

Overview

The state-of-the-art C.J. "Pete" Silas Boys & Girls Club serves more than 1,000 kids and teens between the ages of 6 and 18. The \$7 million facility includes a 30,000-square foot main building, a teen center, learning centers, a gym, a technology and STEM lab, arts and music spaces, and a kitchen.



Wall Products
BENCHMARK
DesignWall 2000



Elegant Design, Naturally

Eliminating Extra Steps:

Our single-panel wall assembly eliminates the need for several steps that would be required using other construction methods - including insulation, interior framing and drywall installation - and eliminates the need for multiple trades. Kingspan's BENCHMARK Designwall 2000 architectural wall panels were used to create an inviting, exciting look, designed with its young members in mind.

Kingspan Solution:

Kingspan panels serve as both exterior and interior walls on portions of the Boys & Girls Club, providing a tough interior wall that can withstand the punishment that kids will dish out playing basketball and other sports and activities. It's not just the metal providing toughness, but the high-tech coatings applied to them are engineered for durability; they can also be easily cleaned.



The Shape of Things to Come

Aesthetic Benefits:

The design of the Bartlesville Boys & Girls Club was created with kids in mind. The exterior features Kingspan's BENCHMARK Designwall 2000 architectural wall panels in a mix of colors – Light Gray, Arabian Blue, Deep Sea Blue and Slate Blue – that create a bold look that help kids get excited about using the facility.

Architectural Benefits:

The new Boys & Girls Club was designed by a local firm, Ambler Architects, who says of the project: "The new building features a bright and modern style that creates an energizing space for the students and teachers who spend their time there."



Setting Down New Roots

Faster Build:

Our insulated metal panels make for a faster build, and can be installed in any weather. Depending on the job size and complexity, a four-person crew can install up to 5,000 square feet of insulated metal panels in an 8-hour shift when working on an industrial project, and 1,100 square feet in the same time frame on an architectural project.

The speed of build helps cut construction time and costs, which is especially important for a non-profit like the Boys & Girls Club.



Contact

For more information on
the products used in this
project, please email

Info.NA@kingspanpanels.com

