

2018

123 East Cermak Hotels, Chicago

Chicago, Illinois, USA

01

123 East Cermak Hotels, Chicago

Location
Chicago, Illinois, USA

Wall Products
BENCHMARK Designwall 2000

Finishes
Silversmith
Medium Gray
Clay

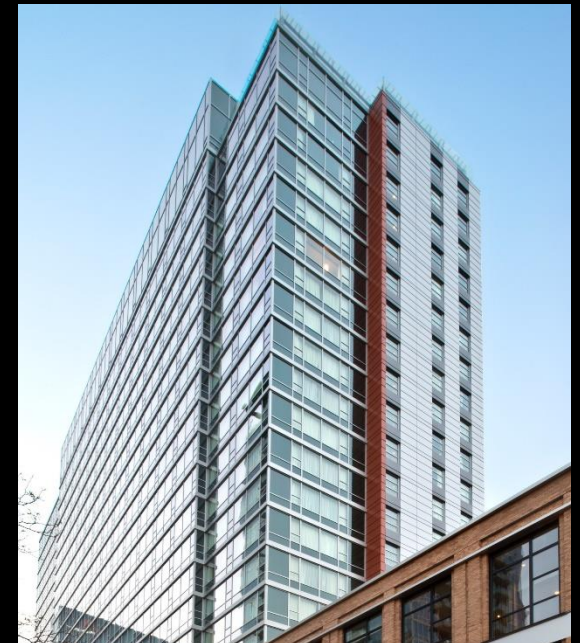


Overview

123 East Cermak Hotels is a 23-story hotel building in Chicago's South Loop neighborhood. It's home to three Hilton-family hotels – a Hampton Inn, a Hilton Garden Inn and a Home2Suites. It's the first time Hilton has had three of its hotels in a single building. The 351,987-square-foot building has 466 guest rooms, four restaurants, an indoor pool and 7,000 square feet of meeting space.



Wall Products
BENCHMARK
Designwall 2000



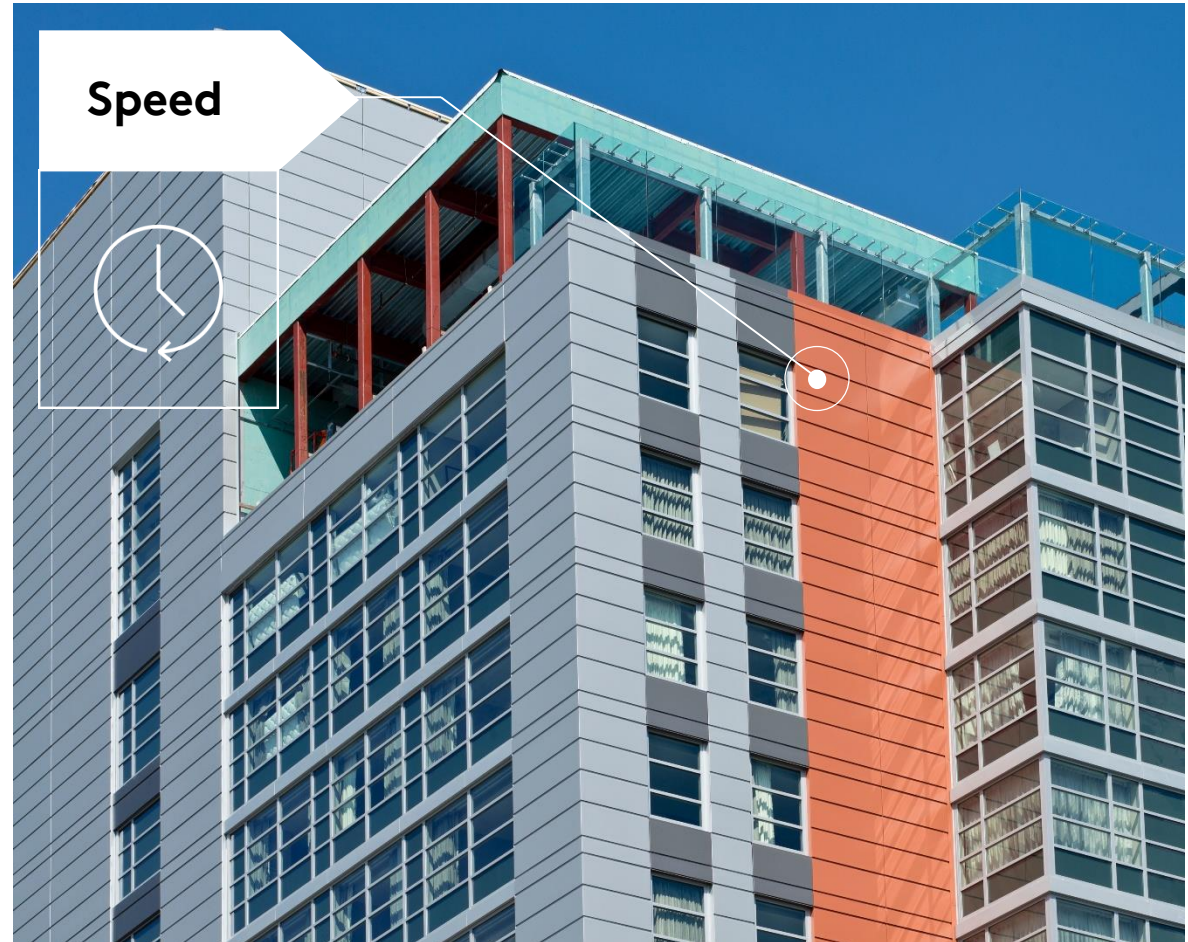
Use of Insulated Metal Panels

Customizing Kingspan Panels:

The building's modern design features more than 35,500 square-feet of Kingspan BENCHMARK Designwall 2000 Architectural Wall Panels. The design called for custom-width panels, as well as custom joint reveals. The typical reveal for an insulated metal panel is a half-inch, but the design for 123 East Cermak called for a two-inch reveal. This custom detail adds an interesting design element as the light and shadows change throughout the day, as well as the seasons.

Adding a New Dynamic:

All of the panels were specified to be custom-width, and more than 400 panels have transverse bends. Trimless ends were also incorporated to add a unique architectural dynamic. The color scheme includes panels in Silversmith, Medium Gray and Clay – all custom coatings from Valspar. The panels are all three-inches thick to provide a superior R-value, especially important during Chicago's frigid winters.



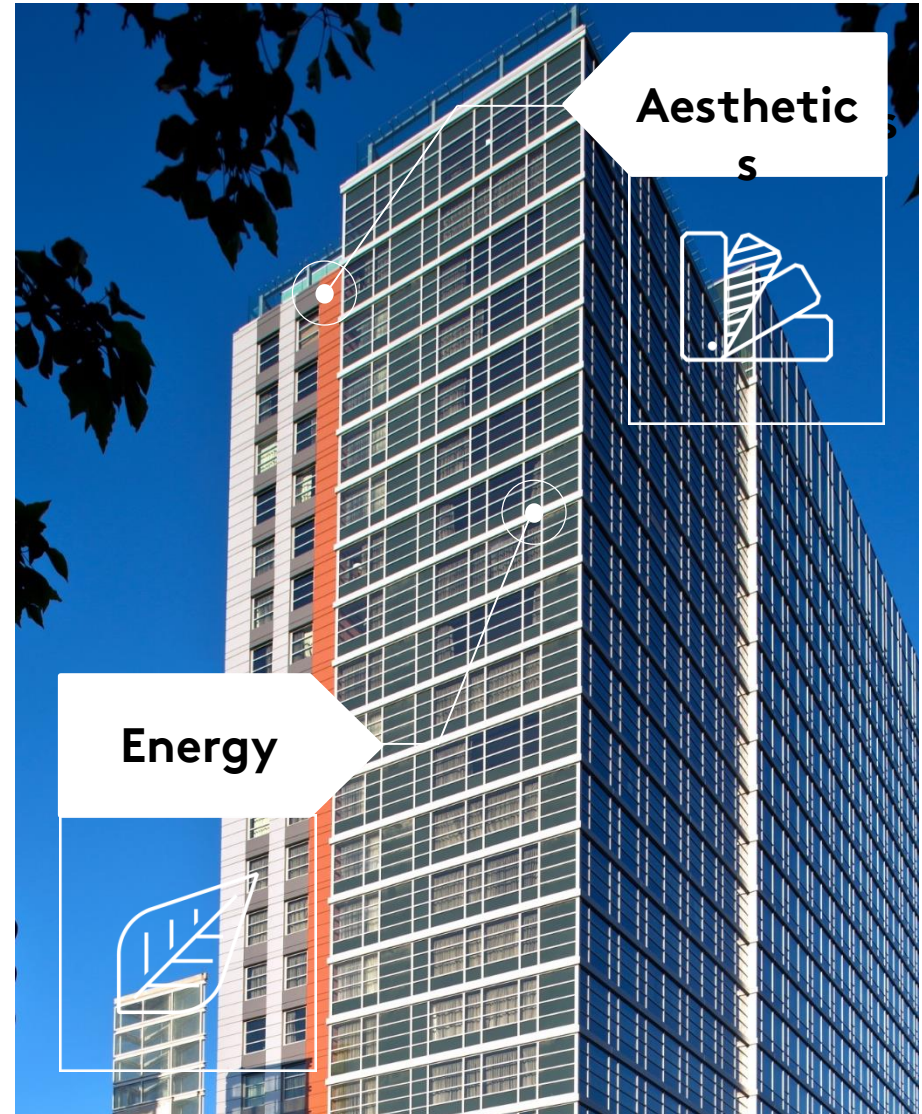
Coordination Across the Board

Meeting the Unique Needs of the Contractor:

Kingspan worked closely with the contractor to create a special bundling and packaging system for the project. The panels were produced and released by elevation as the installer, All American Exterior Solutions, worked its way up the building. The panels were created and packaged at Kingspan's Columbus, Ohio manufacturing facility, then delivered to Chicago when needed.

Scheduling Multiple Deliveries:

Because the job was in a tight downtown space, multiple deliveries had to be scheduled to load the jobs for one-to-two weeks' worth of panels. This strategy required multiple cranes and hoisting days, since all the panels had to be loaded on to the fourth-floor roof. This system required a tremendous amount of coordination by Kingspan's production, quality control and customer service teams in order to keep track of every panel during the five-month period that the IMPs were being produced, delivered and installed.



The Final Result

A One-Stop-Shop:

Metal panels were also incorporated into the design of a sky bridge that connects the hotels to one of the buildings at McCormick Place, the largest convention center in North America. This tri-brand hotel will serve as a convenient 'one-stop-shop' for convention-goers looking to rest and recharge or enjoy the local flavors of Chicago while remaining just steps from their convention events.



Contact

For more information on
the products used in this
project, please email

Info.NA@kingspanpanels.com

