

# Attiro Magnetic Wood

## Installation, Care & Maintenance



**Tate<sup>®</sup>**

# Table of Contents

---

**Storage and Handling .....3**

**Direction of Installation .....3**

**Layout .....4**

**Expansion Joints .....5**

**Site Protection.....6**

**Protection After Installation .....6**

**Removing Attiro .....6**

**Environmental Conditions.....7**

**Care & Maintenance.....7**

**Troubleshooting.....9**

# Attiro Storage & Handling

---

Attiro Magnetic Wood Planks must secure magnetically to the supporting Classic Concrete panel with Eased Edge and steel top sheet on 1" Heavy Duty Bolted Stringer understructure or freestanding understructure to ensure the desired look is achieved. The correct installation of the floor is critical to guarantee the connectivity is optimized.

Once the raised floor is installed and commissioned, the installation of Attiro can begin if the following criteria are confirmed:

- The raised floor surface must be clean, free from dust, debris or damage that has created high points on the surface of the raised floor.
- ***Relative humidity of the site must be maintained between a minimum of 40% to a maximum of 60%.***
- ***Temperature must remain a constant level between 50° F and 86° F (10° C and 30° C) without drastic changes in temperature.***
- Ensure all windows, openings and external doors are fully functioning, are watertight and the building is free from water ingress.
- All heavy work on the site is to have been completed before installing Attiro. This includes installation of ceilings and lighting, installation of partition walls and completion of mechanical and electrical work.
- Do not open Attiro packaging prior to installation. Store and acclimate the unopened boxes inside in a horizontal position on a clean and debris free surface.
- Just before installation, inspect the boards in daylight for any visible faults or damage.
- To achieve a regular distribution of Attiro flooring, it is recommended to install from 2 to 3 different boxes at the same time.
- The surface veneer of Attiro is a natural product so there may be variation in shade and appearance.

## Direction of Installation

---

Direction of Attiro installation depends on the main source of light into the room and, also the layout of the room. Attiro should run parallel with the entering light for the best appearance, but also looks more appealing when running parallel to the longer length of the space. It is up to the owner's discretion, but this should be taken into consideration when determining the direction of the layout.

# Layout of Attiro Flooring

Racking the floor is essential to achieve a staggered joint appearance. Start by either using different lengths found in the boxes or by cutting four or five boards in random lengths, differing by at least 6”.

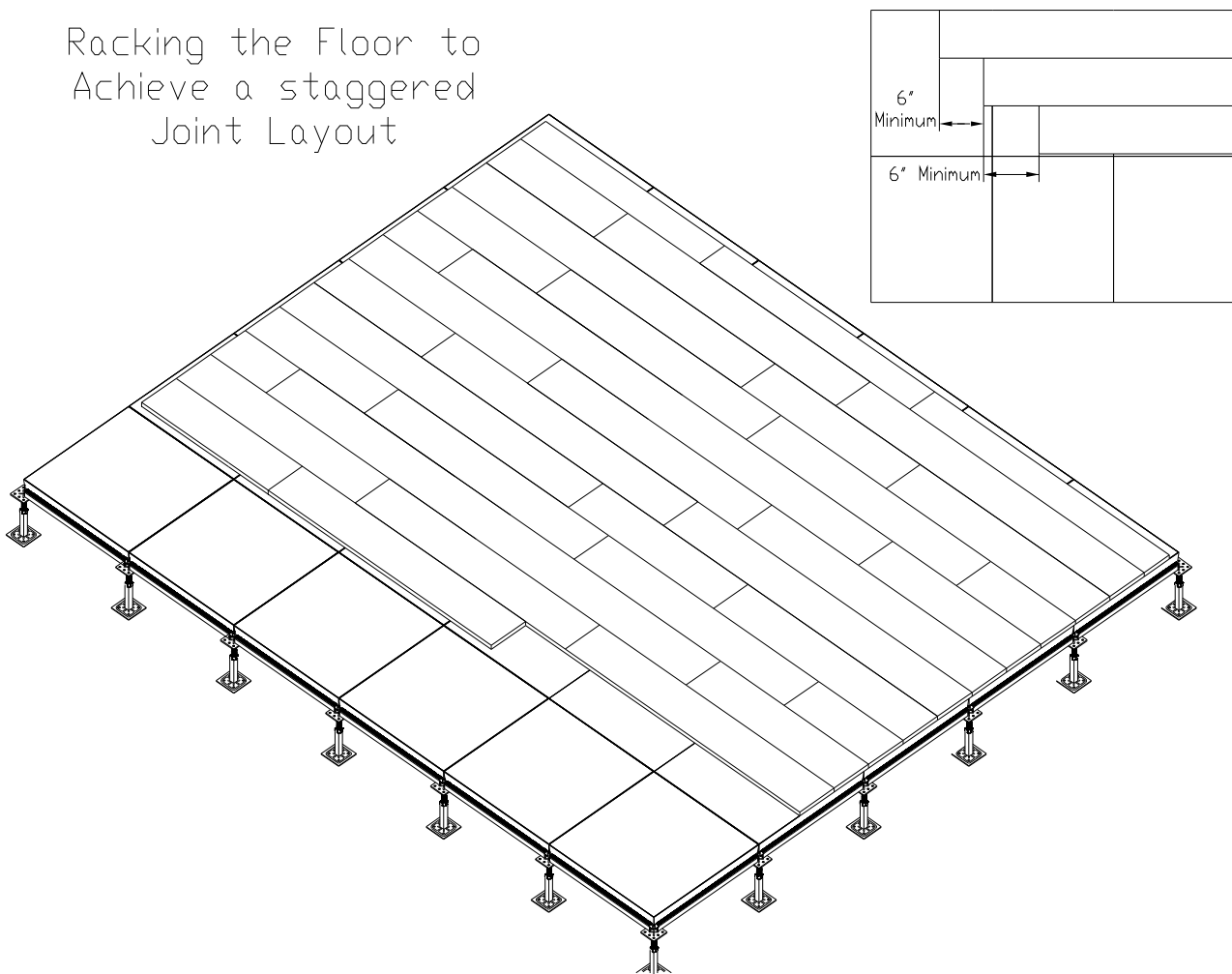
As you continue across the floor, maintain 6” minimum space between end joints.

***Randomly install different lengths from different boxes to avoid a patterned appearance.***

## Waste Allowance

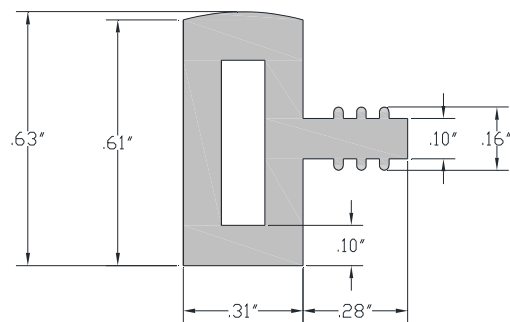
Never waste material. The end cuts from starter rows should be used at the opposite side of the room to complete rows or used to start the next row. However, you should still plan for a 5% cutting allowance for staggered joint layouts. A minimum of 10% waste allowance is required for other layouts.

Racking the Floor to  
Achieve a staggered  
Joint Layout

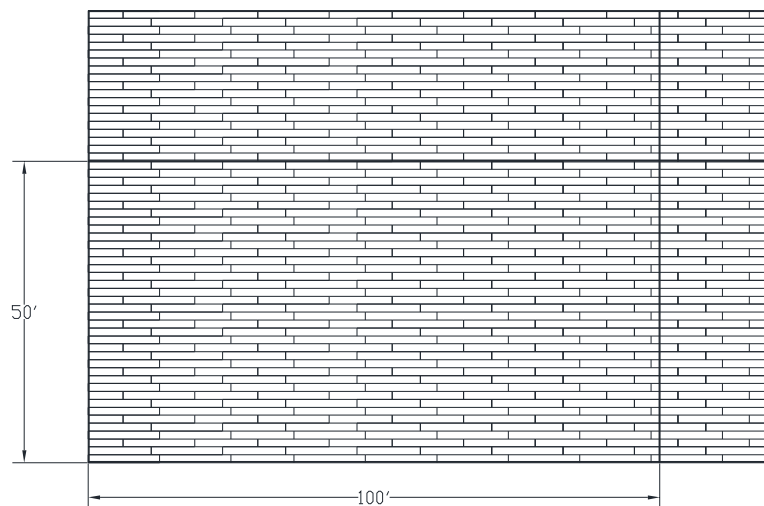
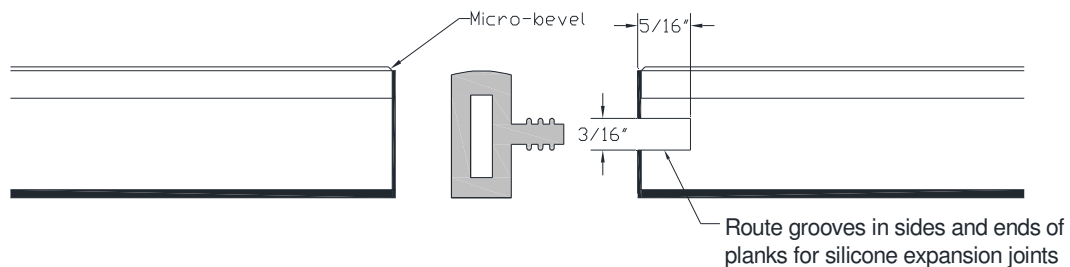
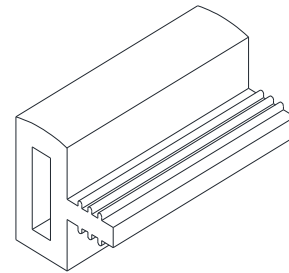


# Expansion Joints

A 5/16" to 3/8" expansion gap is required around all perimeters of rooms with Attiro magnetic planks. This can be filled with Class O neoprene or the 5/16" expansion joint which can be purchased through Tate. In open spaces, the expansion joint is required every 50' in width and every 100' in length. The grooves can be cut using a router such as Dewalt 1-1/4" HP torque variable speed compact router, or equivalent. <https://www.dewalt.com/en-us/products/power-tools/routers-planers-and-joiners/routers/114-hp-max-torque-variable-speed-compact-router-combo-kit-with-leds/dwp611pk>



**Silicone Expansion Joint**



5/16" wide color matched silicone expansion joints are required every 50' in width and every 100' in length of planks and around entire perimeter of installation



# Site Protection and Cleaning

---

Ideally the installation will begin as late as possible in the fit-out program, however when needed for light duty and non-impact protection, a soft, breathable fire-resistant material should be installed on the surface. ***We do not recommend the use of protection that is non-breathable.***

If higher impact protection is required, then plywood or OSB board may be used with a layer of soft, breathable material between it and the surface of Attiro.

All approved protection should remain in place for as little time as possible to reduce the effects of photo-degeneration.

Once all protection is removed and the installation is complete, Attiro can be cleaned with a dry dust mop, soft broom or a vacuum cleaner with soft wheels. The floor should not be damp mopped during the first 2 weeks after initial installation to allow full acclimation. Cleaning can then begin per the Attiro Cleaning & Maintenance instructions.

## Protection After Installation

---

To preserve the quality and appearance of Attiro, we recommend soft, non-marking castors or felt pads be used under furniture and walk-off mats be placed at all external entrances. For additional protection, we recommend placing mats under chairs at workstations.

Attiro is not designed for abnormal wear and tear or misuse. Adequate measures must be made to prevent stains, wear or puncture marks from narrow high heeled shoes, damage from equipment or furniture being moved, rolling loads, damage from impact of heavy items, scratches or scoring by animals or abrasive, sharp, pointed objects, moisture damage caused by wet mopping, spills or standing water.

Attiro is designed to be a decorative floor finish and should be treated as such in terms of the traffic that may take place during and after installation.

## Removing Attiro

---

Attiro should only be lifted with the appropriate lifting devices available from Tate Access Floors, such as single or double vacuum cup lifters. Once one piece of Attiro is removed, the adjoining boards may be lifted by hand or by the cup lifters.

Under no circumstances should hard or sharp objects be used to lift Attiro as this could result in damage to the protective edge band and its beveled edge, or the surface of the wood.

# Environmental Conditions

---

In order to maintain the quality and appearance of Attiro, an indoor climate of 40% - 60% relative humidity and a temperature range of 50° F and 86° F (10° C and 30° C) is required. An average room temperature of approximately 68° F (20° C) is ideal.

To keep the air humidity constant, especially during the heating season (autumn and winter) we recommend using a humidifier to prevent extreme drying out of the floor. Humidifiers should be automatically turned on at the beginning of the heating season and remain on even during off hours.

If the recommended air humidity level falls below our recommendations, small gaps may develop in the joints between the Attiro boards. These gaps will normally close up again once the humidity returns to the recommended levels for a period of time.

## Care and Maintenance

---

The facing veneer of Attiro is a natural product and it will change in appearance and color over time as it matures. Following the below procedures will maintain the natural beauty of Attiro. These procedures are for periodic maintenance of Attiro specifically treated with Osmo Polyx-Oil.

The recommended policy for periodic maintenance requires inspections by the internal Facilities and Maintenance team to assess that the cleaning and maintenance program is carried out, recorded and implemented.

### Maintenance Classes:

- **Class 1:** Little usage – such as seldom used meeting rooms
- **Class 2:** Occasional usage – meeting rooms
- **Class 3:** Daily usage – general office space
- **Class 4:** Intensive usage – break rooms, cafeterias, lobbies, corridors, external entrance areas, exhibition space and retail spaces

**Class 1:** Weekly manual maintenance with Osmo Wash & Care  
<https://osmo-store.com/product/wash-and-care/> . Annual intensive care with Osmo Maintenance Oil <https://osmo-store.com/product/maintenance-oil/>

**Class 2:** Twice weekly mechanical maintenance with Osmo Wash & Care. Quarterly intensive care with Osmo Maintenance Oil

**Class 3:** Three times weekly mechanical maintenance with Osmo Wash & Care. Quarterly intensive care with Osmo Maintenance Oil

**Class 4:** Daily mechanical maintenance with Osmo Wash & Care. Monthly intensive care with Osmo Maintenance Oil



## Maintenance Instructions:

### Manual Maintenance:

Add Osmo Wash & Care cleaning concentrate as per manufacturer's recommendations to lukewarm water. Apply the solution to a lint free cotton mop. **Damp mop only. Do not flood the floor or allow pooling.**

The floor should only remain damp at all times. Running water or pools of water are not permitted. Dry the floor after mopping. The floor may only be used again when dry.

### Mechanical Maintenance:

Add Osmo Wash & Care cleaning concentrate as per manufacturer's recommendations to lukewarm water. Apply the solution using a light floor buffer such as Osmo FloorXCenter with white pad <https://osmo-store.com/product/floorxcenter/>. **Do not flood the floor or allow pooling.**

The floor should only remain damp at all times. Running water or pools of water are not permitted. Afterward, any residual solution can be removed with soft lint free cloths such as Osmo FloorXCenter Easy Pads. <https://osmo-store.com/product/easy-pads-box-of-10/>. The floor may only be used again when dry.

### Intensive Maintenance:

For especially soiled areas, clean the surface of the Attiro with Osmo Intensive Cleaner <https://osmo-store.com/product/intensive-cleaner/> and Osmo Wood Orbiter [www.versatileproducts.co.nz/product/10840-wood-orbiter-deck-and-floor-cleaning-ma](http://www.versatileproducts.co.nz/product/10840-wood-orbiter-deck-and-floor-cleaning-ma). Dilute cleaning solution per manufacturer's recommendations and spray **MINIMAL** amounts to make the surface **DAMP**. Clean the Attiro along the length of the woodgrain. After 10 minutes, wipe the surface with a damp cloth, removing any loose soiling. Afterwards, allow the surface to dry for 4 hours.

Subsequently, apply Osmo Maintenance Oil, undiluted per the manufacturer's recommendations with a microfiber roller. Work into the floor with Osmo FloorXCenter with white pad. Allow floor to dry for 3-4 hours before allowing traffic on the floor.

### Removal of Partial Soiling:

For removing partial soiling outside of regular cleaning intervals, use Osmo Liquid Wax Cleaner <https://osmo-store.com/product/liquid-wax-cleaner-spray/>. Spray directly onto the soiled area and remove the stain with Osmo FloorXCenter and white pad.





## Recommendations:

### Do:

1. Provide protection from sand and chemicals tracked in on shoes by providing "walk- off mats" at entrances.
2. Ensure all furniture and equipment are fitted with soft, non-marking castors or felt pads.
3. Keep the floor clean by regular sweeping and vacuuming and light damp-mopping with Osmo Wash and Care cleaning solution
4. If you vacuum, use a soft brush attachment without a rotating drum.
5. Wipe up spills immediately with a dry, clean cloth and avoid any standing water or liquid as wood will absorb liquid over time and expand. Any stains should be removed while wet with a damp cloth.

### Don't:

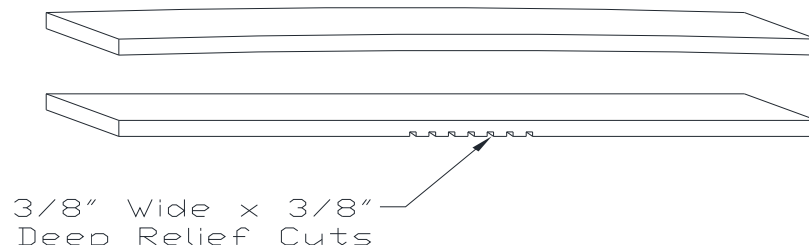
1. Flood the floor or use anything other than a damp mop.
2. Use strong abrasives, steel wool, nylon pads or scrapers to remove stains.
3. Use wax and/or oil based non-recommended detergents or household cleaners
4. Use steam cleaning machines or scrubber driers. These are not suitable for cleaning Attiro.
5. Damp mop the floor during the first 2 weeks after initial installation to ensure full acclimatization.

## Troubleshooting

---

Although engineered, Attiro is made of a natural wood veneer which is sensitive to humidity and temperature changes and incorrect storage. After Attiro has been removed from its original protective packaging, it can be susceptible to movement if storage and the recommended temperature and relative humidity guidelines aren't followed correctly. If this occurs, we recommend the following actions be taken to remedy this.

- Check that the raised floor panels are free from debris and damage and are installed correctly.
- If the center of the plank is crowned, this is typically the result of the humidity being too high. A portable de-humidifier can help to remedy this condition until the building controls return the area to the recommended environmental levels. If the planks still don't secure to the raised floor, three to ten 3/8" relief cuts can be made beneath the crown as shown below.
- If the ends of the planks are raised, this is typically the result of the environment being too dry. If this occurs, the relative humidity must be returned to the recommended levels. A potable humidifier can help to remedy this condition until the building controls return the area to the recommended environmental conditions.



**Corporate Headquarters:**

7510 Montevideo Road,  
Jessup, MD 20794  
Tate Hotline: 1-800-231-7788  
Tel: +1 410 799 4200  
Fax: +1 410 799 4207

**Production Facilities:**

7510 Montevideo Road,  
Jessup, MD 20794  
52 Springvale Road,  
Red Lion, PA 17356  
Tel: +1 717 244 4071  
Fax: +1 717 246 3437

**Canadian Sales & Support Office:**

880 Equestrian Court, Oakville,  
ON L6L 6L7 Canada  
Tate Hotline: 1-800-231-7788  
Tel: +1 905 847 0138  
Fax: +1 905 847 0141

**Australian Sales & Support Office:**

28 Biloela Street, Villawood NSW 2163  
Tel: +61 02 9728 4111  
Fax: +61 02 9728 3088

**Asia Sales & Support Office:**

19 Cecil Street  
#05-15, 5th Floor, The Quadrant  
Singapore 049704  
Tel: +65 6653 5358

**Central and South American Sales & Support:**

Tel: +1 443 995 1808

**European Sales & Support:**

B16 Ballymount Corporate Park,  
Ballymount Avenue,  
Ballymount, Dublin 12, Ireland  
Tel: +353 (0) 87 1238383

**Middle East Sales & Support:**

Jebel Ali-Lahbab Road (E 77 Road)  
Dubai Investment Park  
United Arab Emirates  
Tel: +971 56 199 8368

**Have a Question?**

**Call Tate's Technical Hotline 1-800-231-7788  
or visit our website at [www.tateinc.com](http://www.tateinc.com)**