

# The Kingspan Total Wall Solution

Integrated, aesthetic, efficient



“Everything you need for a complete wall system, from a single source – for me, that’s the perfect solution.”



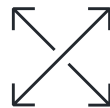
#### Rapid installation

Our solutions package is delivered directly to site for installation. With these factory-engineered systems, even extensive construction projects are easy to plan and quick to implement.



#### Easy installation

Engineered joints, integrated elements and single-fix methods greatly simplifies installation, removing the need for time-consuming cutting, sealing and reworking.



#### Perfectly coordinated solution

All wall components are matched perfectly and manufactured with the greatest care, ensuring a reliable, high-performing and long-lasting solution.



#### Everything from a single source

As a single-source solution, any questions or concerns you have can be dealt with by us quickly and efficiently – that saves you time and money!

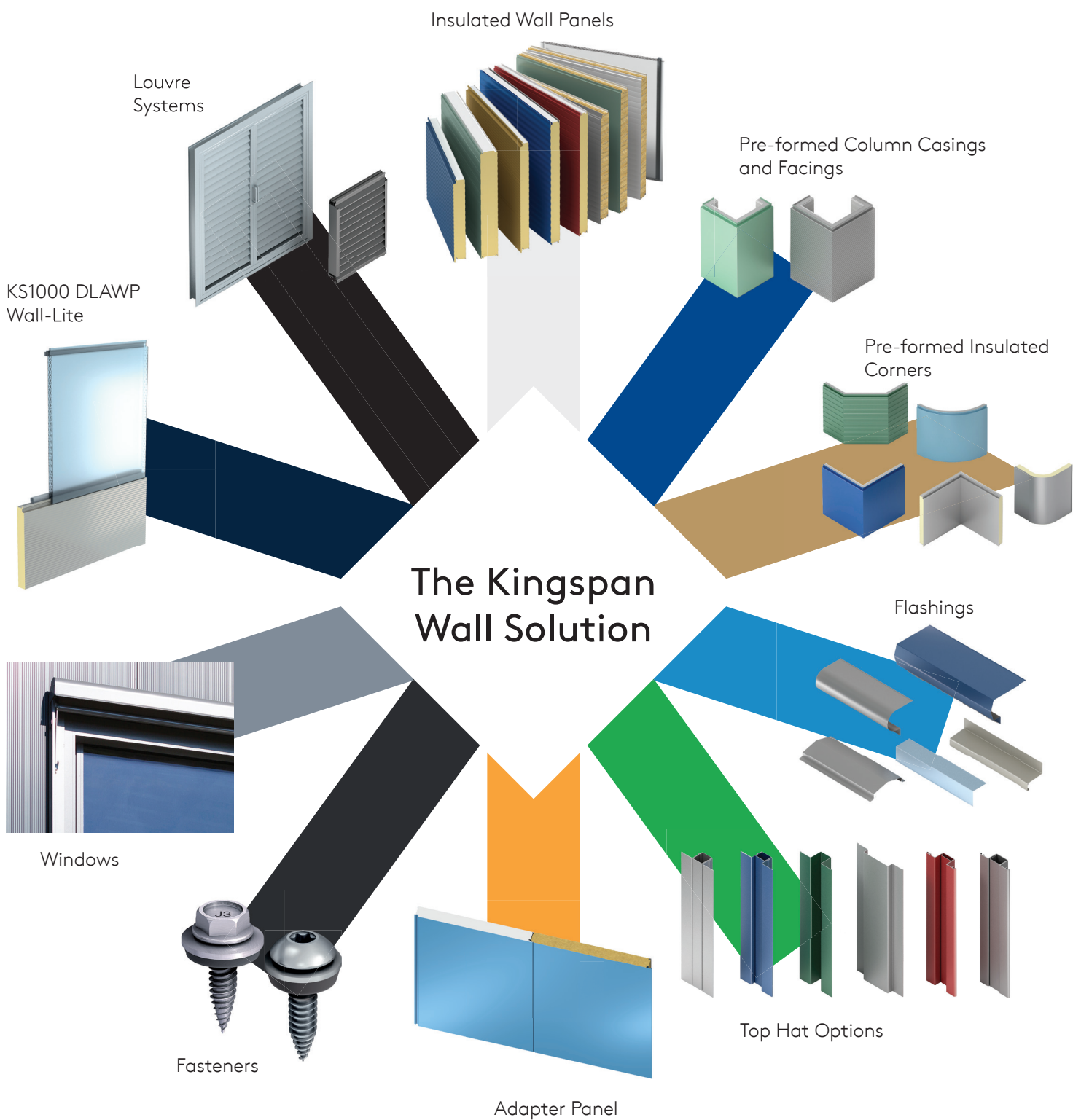


#### Perfect appearance

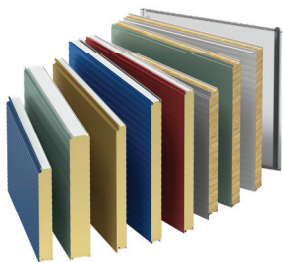
Factory-assembly of elements ensures optimum accuracy of fit and a seamless appearance. A comprehensive palette of colours promotes individual design.



# A complete wall solutions package for all eventualities.

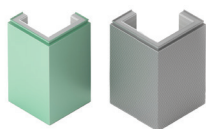


# System solutions overview



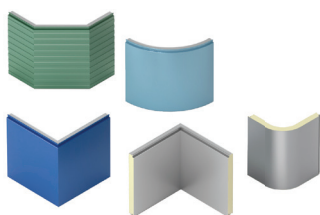
## Insulated Wall Panels

We offer a comprehensive range of insulated wall panel systems ensuring we have the right solution for your application. Choose from mineral wool, IPN foam, or our innovative next generation QuadCore™ technology insulation cores in various thicknesses, combined with a wide palette of colours and profiles.



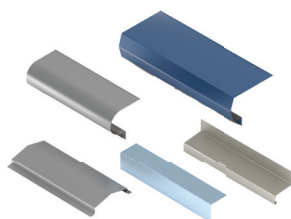
## Pre-formed Column Casings and Facings

Providing the finishing touch to any wall, our preformed column casings and facings integrate seamlessly with our wall panels.



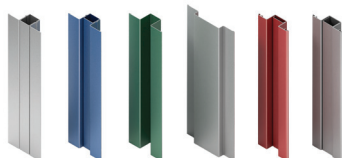
## Pre-formed Corners

Our factory-assembled preformed corners are available in both IPN and mineral will cores, and integrate easily with our wall panels for quick and easy installation. They can be manufactured for either horizontal or vertical application and are available in a wide range of colours.



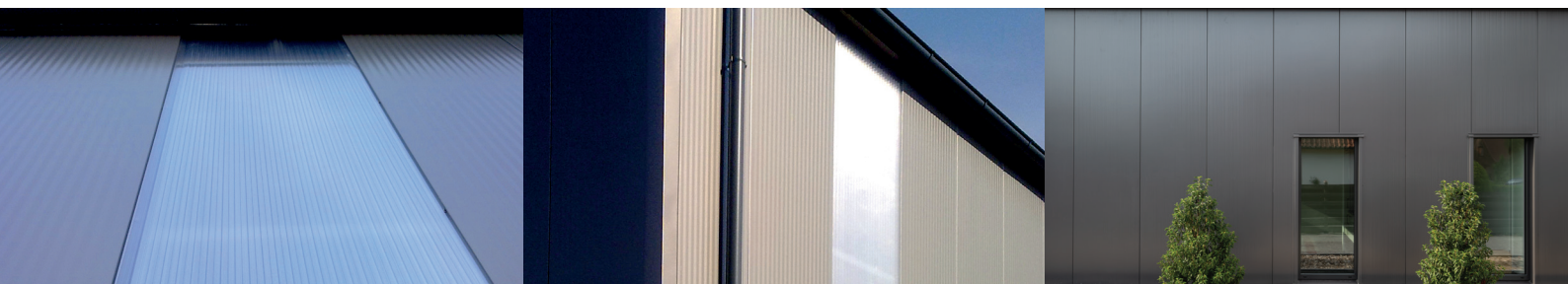
## Flashings

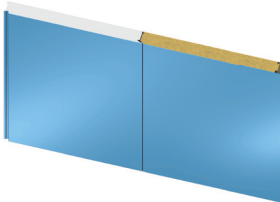
Fabricated from fully galvanised steel, our flashings are available with a maximum width of 1,250mm and a standard length of 6,000mm. The maximum deliverable length is 8,000mm. Our flashings are typically used on internal /external corners, roof and wall connections, fascias, verges and eaves applications.



## Top Hat Options

Top hat profiles are an efficient solution for elegantly finishing the joint between wall panels. Suitable for both horizontal and vertically applied panels, they are available in a choice of aesthetic effects and can be coloured to match or contrast with the wall panels. All top hat options have a maximum length of 7,000mm.





## Adapter Panels

Adapter Panels are used between wall panels of differing thicknesses or insulation cores, creating a transition that is both visually and technically perfect.



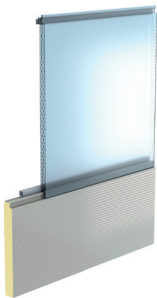
## Fasteners

The correct fasteners are a key component in any wall solution. Coordinated for colour, insulation core thickness and substructure, we only supply fasteners that are approved for use with our wall panels. For more information on fasteners, please contact our technical department.



## Windows

Our Kingspan Day-Lite Window was specifically developed for use in insulated panel construction. It's sleek design ensures neat connections and impeccable appearance without visible screws or rivets. And, as there are no fixings within the frame, the insulation values are outstanding. A wide choice of colours is available.



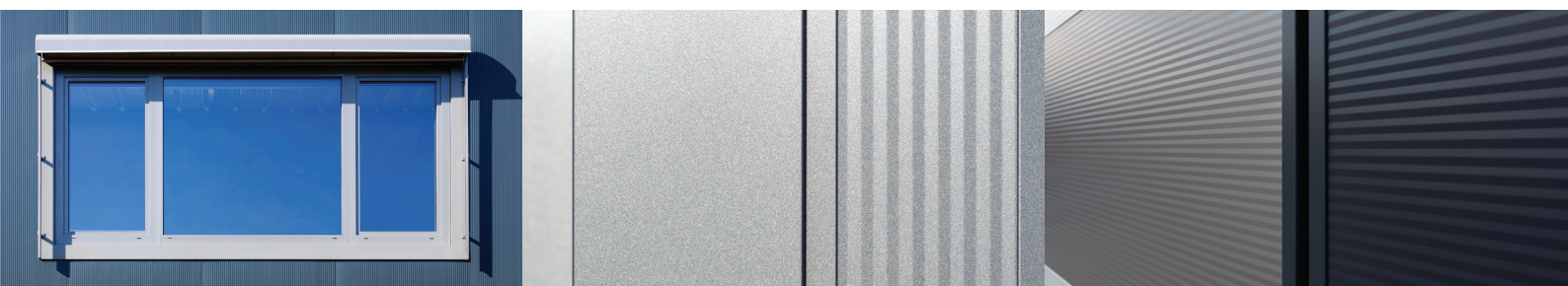
## Architectural Wall-Lite (KS1000 DLAWP)

Kingspan Architectural Wall-Lite is an efficient natural light solution made of high-strength polycarbonate, designed to integrate perfectly with the Architectural Wall Panel range. With a U-value of 1.26 W/m<sup>2</sup>K, thermal performance of the wall system is not compromised. With a light transmission of 55%, Wall-Lite provides high levels of natural light and has exceptional UV resistance performance. Available in standard cover width of 1,000mm and up to 8,000mm in length.



## Louvre Systems

Our pre-fabricated louvre systems are designed to integrate with our wall panels and are manufactured to your exact requirements. Available with and without frames, they can also include bird or insect mesh. Typically fabricated from aluminium featuring Komaxit coating, they are available in colours to match your choice of wall panels. Standard size is 1,000mm x 3,000mm, with a recommended maximum size of 9m<sup>2</sup>.



---

**Kingspan Płyty Warstwowe, Polska**

ul. Przemysłowa 20, 27-300 Lipsko, Polska  
Tel.: +48 48 378 31 00  
info@kingspan.pl  
www.kingspan.pl

---

**Kingspan Kereskedelmi Kft.**

2367 Újhartyán, Horka dűlő 1, Magyarország  
Tel.: +36 (29) 573 400, +36 (29) 573 410  
ajanlat@kingspan.com  
www.kingspan.hu

---

**Kingspan a. s.**

Vážní 465, 500 03 Hradec Králové, Česká republika  
Tel.: +420 495 866 111  
Fax: +420 495 866 100  
info@kingspan.cz  
www.kingspan.cz

---

**Kingspan Oy**

Nuijamiestentie 5 A , 00400 Helsinki, Finland (Suomi)  
Tel.: +358 9 878 6080  
info@kingspan.fi  
www.kingspan.fi

For the product offering in other markets  
please contact your local sales representative  
or visit [www.kingspan.com](http://www.kingspan.com)

Care has been taken to ensure that the contents of this publication are accurate, but Kingspan Limited and its subsidiary companies do not accept responsibility for errors or for information that is found to be misleading. Suggestions for, or description of, the end use or application of products or methods of working are for information only and Kingspan Limited and its subsidiaries accept no liability in respect thereof.