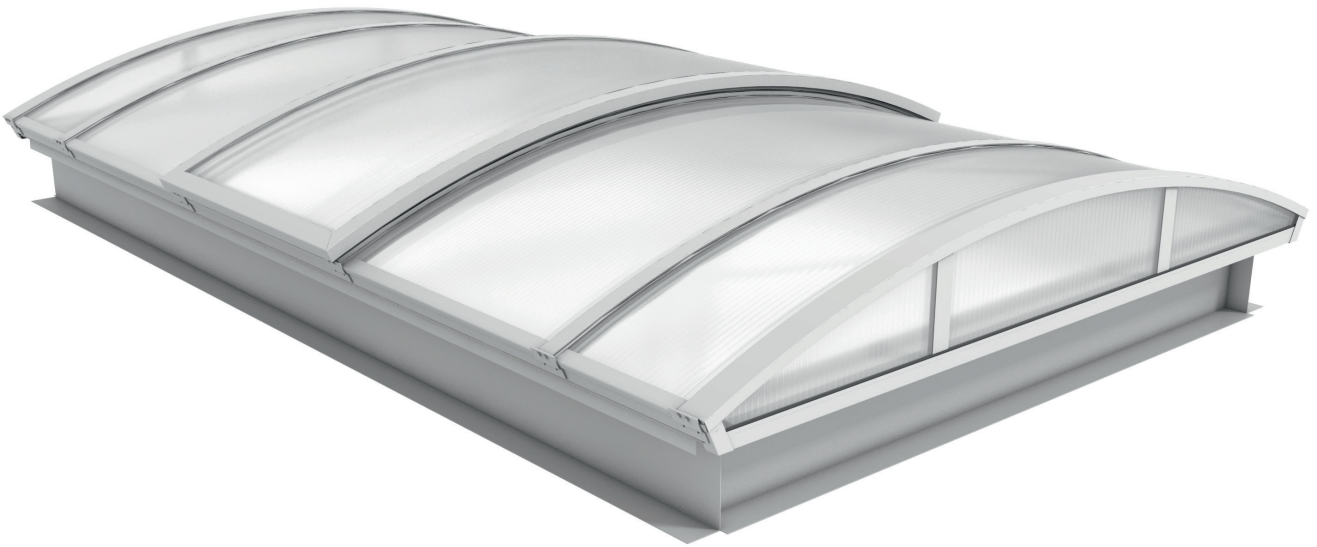




Kingspan Arcade Plus Rooflight Data Sheet



Continuous Rooflight System with Thermally Broken Sections
and Versatile Retrofitting Options



Daylighting Solutions
Natural Ventilation Solutions
Smoke Management Solutions
Service & Maintenance
Building Automation

Application

The Arcade Plus Rooflight is an energy-efficient, thermally broken system with an arched aluminium and PVC profile structure. It is particularly suitable for more demanding installations with respect to insulation, sealing, and protection against condensation.

Application areas

- Industrial flat roofs up to a maximum roof pitch of 20° (max. 5° parallel to the ridge)
- Greater pitch angles on request
- Heated industrial halls, sports and exhibition halls, commercial and office buildings
- New-builds and energy efficiency renovation projects

Material

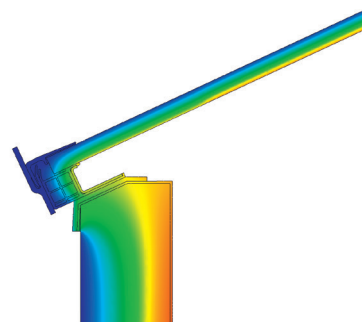
- Aluminium and PVC profile systems
- Panel material made of polycarbonate multiwall panels, PETG, GRP, glass mat

Features and benefits

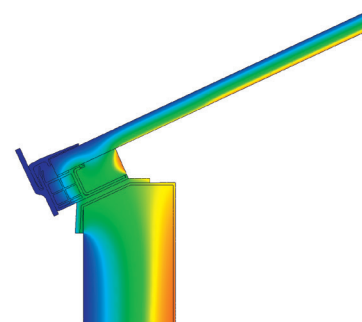
- Available in any length, in spans from 1–6 metres
- Very good U values due to thermally separated profile systems e.g. URC from 1.2 for 3m span and 40m length, without flaps⁵⁾
- Very good insulation capacity in the support area due to multiwall PVC profiles
- Reduced condensation risk where demands are greater due to optional insulation in the support area
- Thermally broken flap systems
- Extendable modular design with a wide range of accessories
- Individually adjustable to static requirements
- Different glazing options available for a wide range of requirements such as protection against heat, sound, solargain or airtightness
- The entire system has excellent sealing properties
- Reduced heating costs due to highly efficient overall design
- Design options for dispersing high snow loads
- Approved according to European Technical Approval ETA - 17/0482 and type approval
- Compatible with safety and fall-through protection systems
- Intelligent connection technology due to EPDM frame safety connection
- Non-fragile Class B in accordance with ACR(M)001:2014 and EN14963 Class SB1200



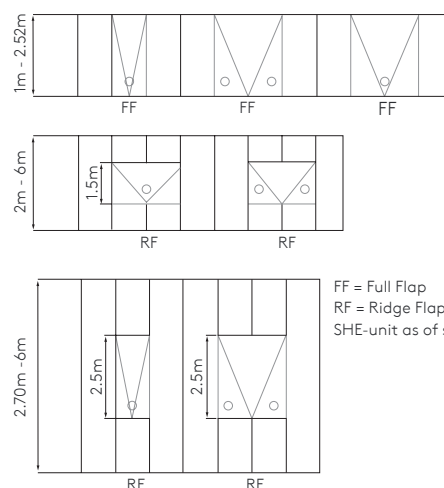
Cross-section of Kingspan Arcade Plus rooflight



Cross-section of isothermal properties for Kingspan Arcade Plus rooflight without additional insulation in the support area

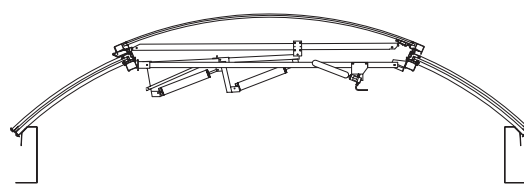
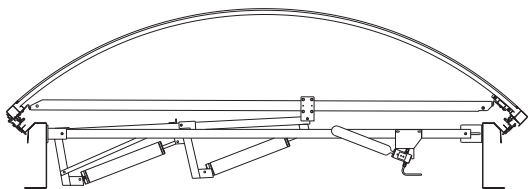


Cross-section of isothermal properties for Kingspan Arcade Plus rooflight with additional insulation in the support area



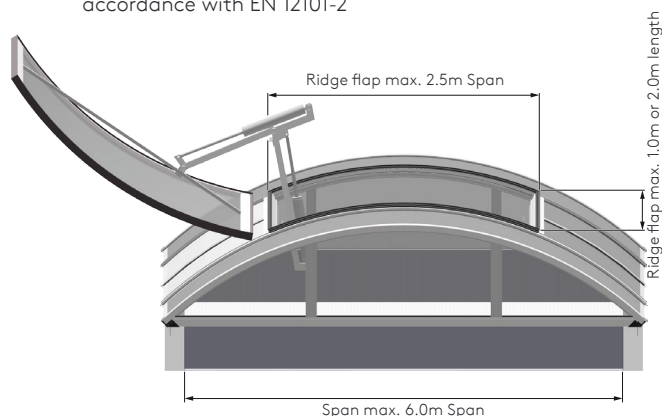
FF = Full Flap
RF = Ridge Flap
SHE-unit as of span width 1.35m

Technical Specifications



Full flap with NSHE⁴⁾

- Installation position: over the entire span of the arcade rooflight
- Available in 1.00m and 2.00m versions
- For spans from 1.00m to 2.53m
- Smoke and heat extraction flap systems tested in accordance with EN 12101-2



Ridge flap vent with NSHE

- Installation position: in the ridge with two transom profiles for mounting
- Flap dimensions (W x L):
1.50m x 2.00m
2.50m x 1.00m
2.50m x 2.00m
- For spans from 2.00m to 6.00m (1.50m x 2.00m)
- For spans from 2.70m to 6.00m (2.50m x 1.00m)
(2.50m x 2.00m)
- Smoke and heat extraction flap systems tested in accordance with EN 12101-2

Glazing options	Span width (m)	U _T value (W/m ² K)	Soundproofing quality (dB)	Light transmission ³⁾ (%)	g value ³⁾ Opal (%)	Fire behaviour [EN 13501]
PC 16/7	2.00- 6.00	1.8 ¹⁾	21	45	46	B-s1, d0
PC 20/7	2.50- 6.00	1.6	23	44	45	B-s1, d0
PC 10/4 + 10/4	1.00- 6.00	1.7	24	37	43	E
PC 10/4 + glass mat + PC 10/4 ²⁾	1.00- 6.00	1.7	24	27	33	E
PC 16/7 + 10/4 ²⁾	2.00- 6.00	1.3	24	28	37	E
PC 16/7 + glass mat + PC 10/4 ²⁾	2.00- 6.00	1.3	24	20	29	E
PC 16/7 + 6 mm PETG	2.00- 6.00	1.8	30	38	43	E
PC 16/7 + PC 16/7	2.00- 6.00	1.1	25	21	28	E
PC 10/2 with Aerogel filling	1.00- 3.30	2	21	74	71	E
PC 16/3 with Aerogel filling	2.00- 3.50	1.3	21	65	64	E
PC 20/3 with Aerogel filling	2.50- 3.50	1.1	21	63	63	E
PC 16/7 IR control white	2.00- 6.00	1.8 ¹⁾	21	22	31	B-s1, d0

1) Vertical installation

2) Meets the requirements for B roof (t1) "hard roofing"

3) Opal glazing only, others on request

4) NSHE (T-05) from span of 1.35 m (national)

5) Values dependent on design, glazing, fitting, dimensions

Specific U values can be calculated on request.

Depending on the glazing material and width, the Arcade Plus rooflight is supplied with a pitch of 1/5 or 1/9.

UK

Kingspan Light + Air

Mellyn Mair Business Centre
Lamby Industrial Park
Wentloog Avenue
Cardiff, CF3 2EX
T: +44 (0) 29 2077 6160

Kingspan Light + Air

North East of England Business Centre
Wearfield Enterprise Park
Sunderland, SR5 2TA
T: +44 (0) 191 5166253

E: info@kingspanlightandair.com
www.kingspanlightandair.co.uk

Ireland

Kingspan Light + Air

Carrickmacross Road,
Kingscourt, Co. Cavan, A82 E897
T: +353 (0) 42 969 8500
F: +353 (0) 42 969 8572

E: info@kingspanlightandair.com
www.kingspanlightandair.ie

For the product offering in other markets please
contact your local sales representative or visit
www.kingspanlightandair.co.uk

Care has been taken to ensure that the contents of this publication are accurate, but Kingspan and its subsidiary companies do not accept responsibility for errors or for information that is found to be misleading. Suggestions for, or description of, the end use or application of products or methods of working are for information only and Kingspan Limited and its subsidiaries accept no liability in respect thereof.