

FREEZER DOOR

hinged,
one-leaf



Applications:

used in buildings where the required interior temperature is within a **0°C** to **-25°C** range



FIREsafe™


Kingspan®
Innovation | Service | Support

Production details:



Door leaf:

- ▶ 100 mm thick
- ▶ Galvanized steel covered with 25 µm PES coating in RAL 9002; protection foil
- ▶ Foamed-in-place polyurethane insulation of 40 kg/m³ density
- ▶ Rounding gasket to seal the contact point between the door leaf and the frame
- ▶ Bottom gasket to seal the space between the door leaf and the threshold



Door frame

- ▶ Fitted onto the opening
- ▶ Galvanized steel covered with 25 µm PES coating in RAL 9002; protection foil
- ▶ Foamed-in-place polyurethane insulation of 40 kg/m³ density
- ▶ Double sided (interior/exterior) for installation in insulated panel walls
- ▶ One-sided for traditional assembly



Hardware

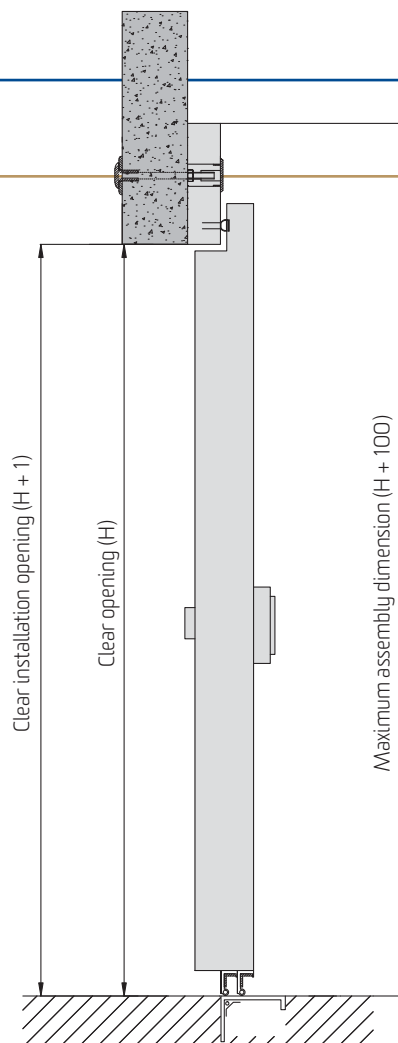
- ▶ Provided by Fermod, leader in hardware for refrigeration industry
- ▶ Rising hinges
- ▶ Safe lock provided with key
- ▶ Door adjustment without disassembly



Standard dimensions range

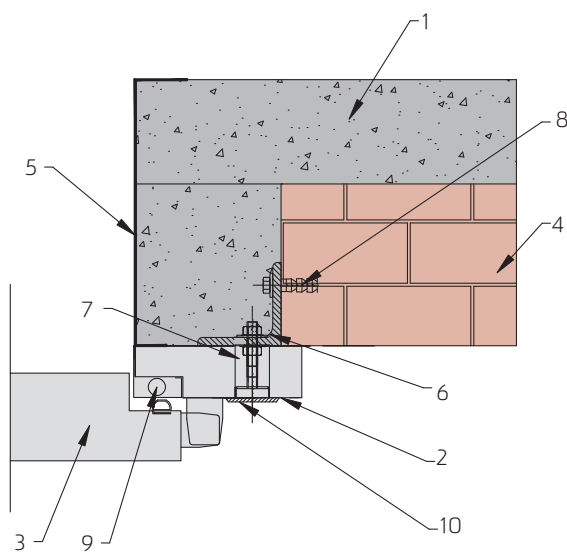
- ▶ Min 800 x 2000 mm
- ▶ Max 1500 x 2500 mm

Assembly



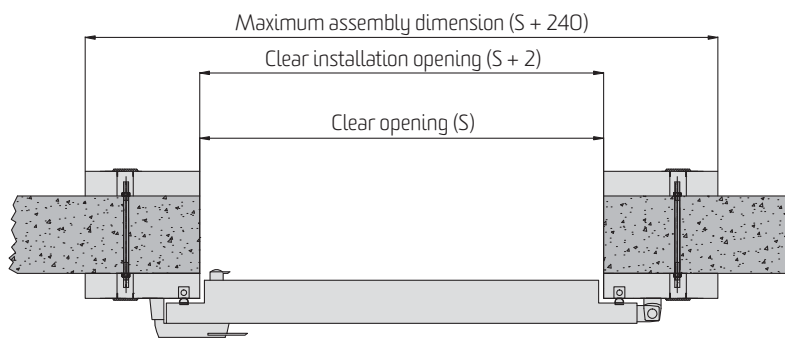
*Assembly to insulated wall panel
– one-sided frame, vertical section*

Traditional assembly (brickwork) – insulated with composite panels

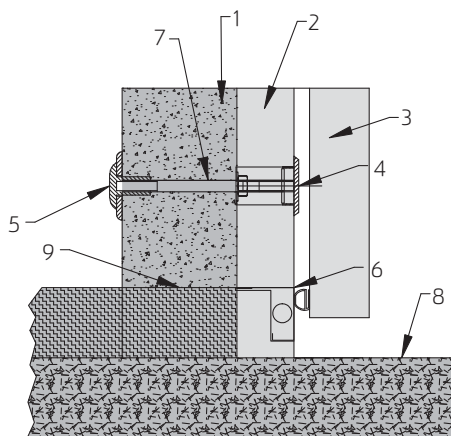


- 1 – Insulated wall panel
- 2 – Frame
- 3 – Door leaf
- 4 – Brick wall
- 5 – Flashing
- 6 – Angle bar 80x80x8 mm
- 7 – M10 type bolt with expanded washer
- 8 – Expansion anchor
- 9 – Heating wire in the frame
- 10 – Plug

Assembly to insulated wall panel – double frame, vertical section

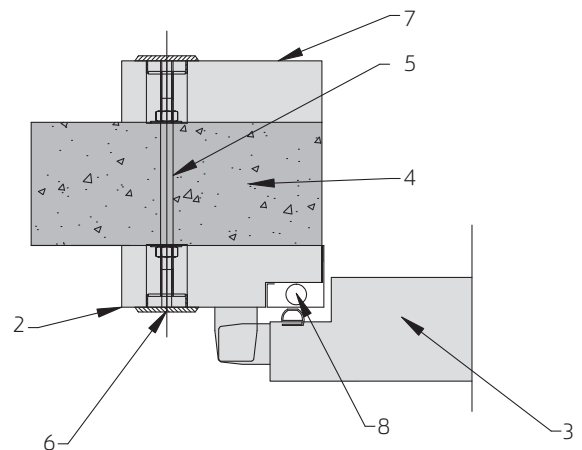


Assembly to insulated wall panel – steel threshold



- 1 – Insulated wall panel
- 2 – Frame
- 3 – Door leaf
- 4 – Plug
- 5 – Castel bolt
- 6 – Threshold at h=floor level inside, eg. 100 mm
- 7 – M10 ertalone rod
- 8 – "O" level
- 9 – Floor level within the chamber

Assembly to insulated wall panel – double frame



- 1 – Insulated wall panel
- 2 – Frame
- 3 – Door leaf
- 4 – Castel bolt
- 5 – M10 ertalone rod
- 6 – Plug
- 7 – Internal frame
- 8 – Heating wire



Safety lock



Lock mechanism (inside)



Heating wire casing



Steel threshold for embedding in the floor



Steel threshold

FREEZER DOOR

hinged, one-leaf

Options:

- ▶ Other colours from the RAL collection
- ▶ Foodsafe – a 150 µm thick, chemically inert coating for interior and food processing applications
- ▶ Stainless steel, smooth
- ▶ Stainless steel, grained
- ▶ Other, non-standard dimensions
- ▶ Steel threshold to accommodate floor level difference (interior/exterior)
- ▶ 120 mm door leaf
- ▶ Hardware provided by STUV, German leader in cold store door hardware
- ▶ Window
- ▶ Bumpers



Kingspan Sp. z o.o.

20 Przemysłowa St.

27-300 Lipsko

Phone: +48 48 378 31 00

Fax: 48 48 378 13 30

info@kingspan.pl

www.kingspan.pl