

# COLD STORE DOOR

hinged,  
two panel



## Applications:

used in buildings where the required interior temperature is within a **0°C** to **+10°C** range



**FIREsafe™**

  
**Kingspan®**  
Innovation | Service | Support

## Production details:



### Door leaf

- ▶ 80 mm thick
- ▶ Galvanized steel covered with 25 µm PES coating in RAL 9002; protection foil
- ▶ Foamed-in-place polyurethane insulation of 40 kg/m<sup>3</sup> density
- ▶ Rounding gasket to seal the contact point between the door leaf and the frame and the space between the door leaves
- ▶ Bottom gasket to seal the space between the door leaf and the threshold
- ▶ Possible unequal door leaf dimensions



### Door frame

- ▶ Fitted onto the opening
- ▶ Galvanized steel covered with 25 µm PES coating in RAL 9002; protection foil
- ▶ Foamed-in-place polyurethane insulation of 40 kg/m<sup>3</sup> density
- ▶ Double frame adapted to installation requirements (traditional / insulated panel walls)



### Hinges and lock

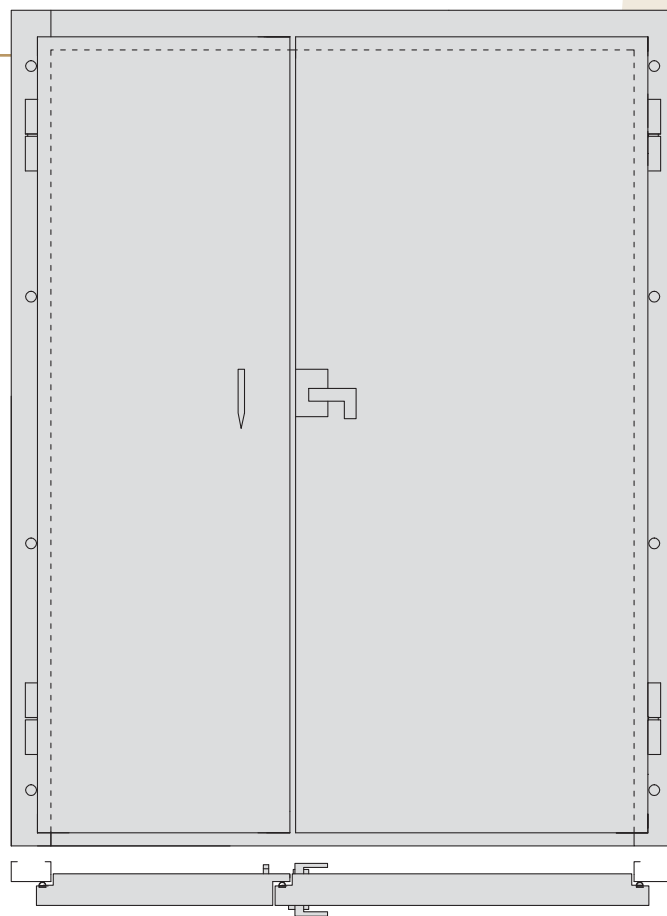
- ▶ Hinges provided by Fermod, French leader in hardware for refrigeration industry
- ▶ Rising hinges
- ▶ Locks provided by STUV, German leader in cold store door hardware
- ▶ Safety lock with key
- ▶ Door adjustment without disassembly



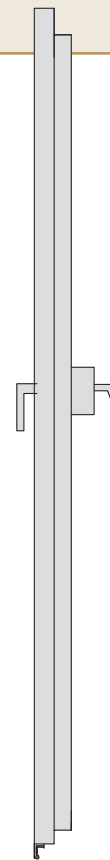
### Standard dimensions range

- ▶ Min 1200 x 2000 mm
- ▶ Max 2400 x 2800 mm

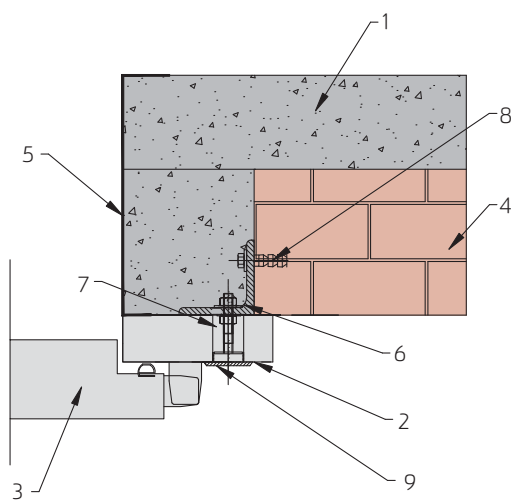
# Assembly



*Main view*

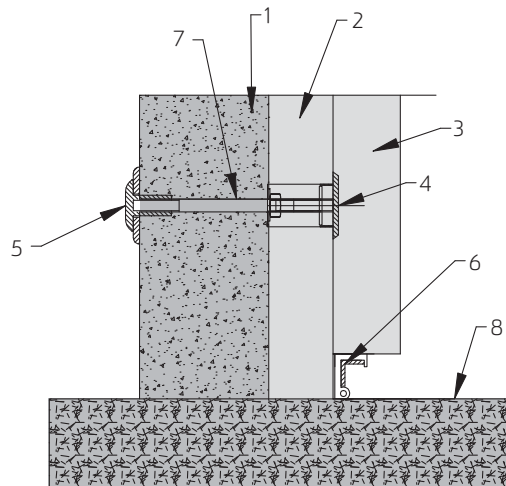


*Traditional assembly (brickwork)  
– insulated with composite panels*



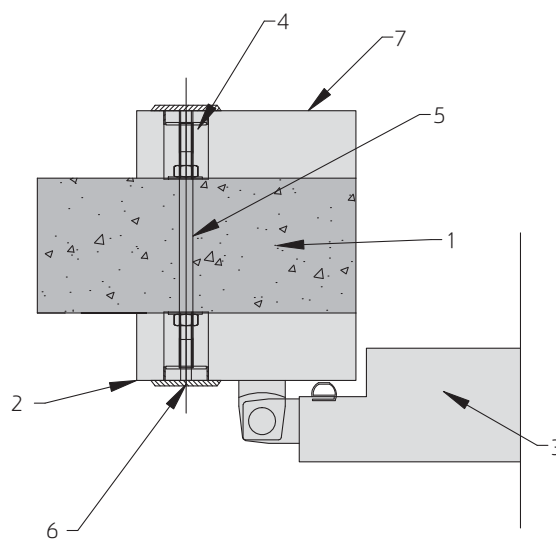
- 1 – Insulated wall panel
- 2 – Frame
- 3 – Door leaf
- 4 – Brick wall
- 5 – Flashing
- 6 – Angle bar 80x80x8 mm
- 7 – M10 type bolt with expanded washer
- 8 – Expansion anchor
- 9 – Plug

*Assembly to insulated wall panel - threshold*

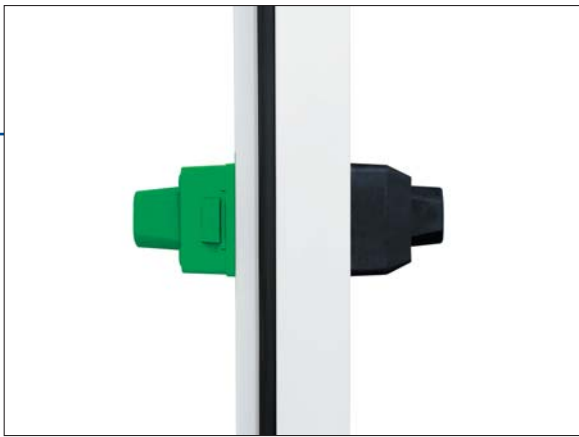


- 1 – Insulated wall panel
- 2 – Frame
- 3 – Door leaf
- 4 – Plug
- 5 – Castel bolt
- 6 – Bottom gasket
- 7 – M10 metal rod
- 8 – "O" level

*Assembly to insulated wall panel – double frame*



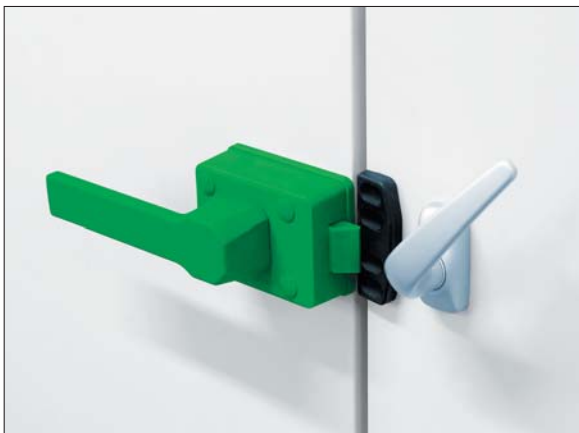
- 1 – Insulated wall panel
- 2 – External frame
- 3 – Door leaf
- 4 – Washer
- 5 – M10 metal rod
- 6 – Plug
- 7 – Internal frame



*Safety lock*



*Hinge*



*Safety lock, interior*



*Passive leaf blockade*



*Locking element on the frame*



# COLD STORE DOOR

hinged, two panel

## Options:

- ▶ Other colours from the RAL collection
- ▶ Foodsafe – a 150 µm thick, chemically inert coating for interior and food processing applications
- ▶ Stainless steel, smooth
- ▶ Stainless steel, grained
- ▶ Other, non-standard dimensions
- ▶ Steel threshold to accommodate floor level difference (interior/ exterior)
- ▶ Hinges provided by STUV
- ▶ Window
- ▶ Bumpers



## Kingspan Sp. z o.o.

20 Przemysłowa St.

27-300 Lipsko

Phone: +48 48 378 31 00

Fax: 48 48 378 13 30

[info@kingspan.pl](mailto:info@kingspan.pl)

[www.kingspan.pl](http://www.kingspan.pl)