

STEEL PROFILE OPTIONS

Profile	Dimensions [mm]	Exterior	Interior
M (micro)		<input checked="" type="checkbox"/>	<input type="checkbox"/>
F (smooth)		<input checked="" type="checkbox"/>	<input checked="" type="checkbox"/>
Line 200		<input checked="" type="checkbox"/>	<input checked="" type="checkbox"/>
Line 600		<input checked="" type="checkbox"/>	<input type="checkbox"/>
C (minimicro)		<input checked="" type="checkbox"/>	<input type="checkbox"/>
B (box)		<input checked="" type="checkbox"/>	<input checked="" type="checkbox"/>
T (Trapez)		<input checked="" type="checkbox"/>	<input type="checkbox"/>

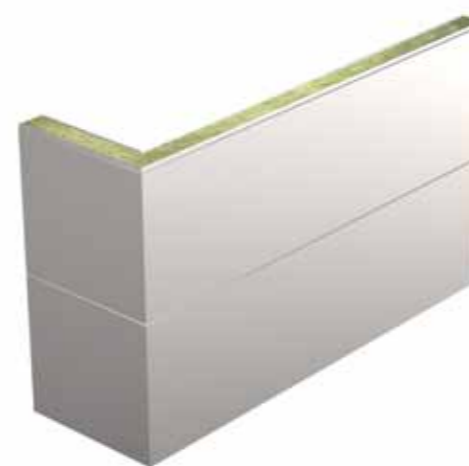
STANDARD COLOURS - EXTERIOR SIDE

Exterior coat types (for galvanized steel)	Polyester (PES) - 25µm	RAL 9010	RAL 9002	RAL 7035
		RAL 9006	RAL 9007	RAL 7016
The colours are only illustrative in nature and may differ from the actual ones.				

SHAPED MODULES



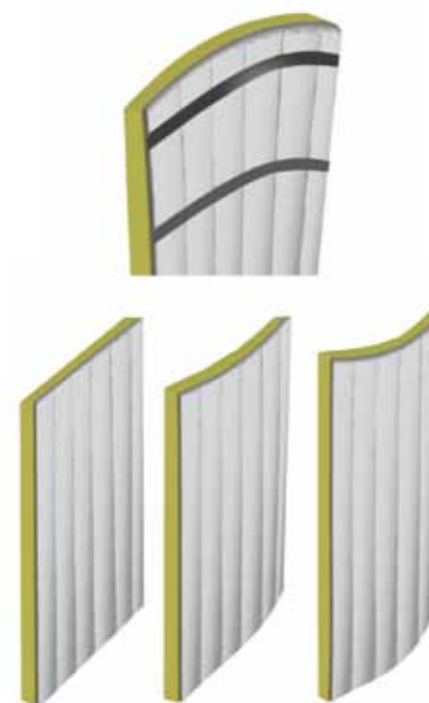
Paroc bevelled panel



Paroc corner panel



Paroc U-panel



Paroc Radius Panel



Panel Solutions - Export

March 2020

PRODUCTSELECTOR



The information in this brochure describes the conditions and technical properties of the disclosed products, valid at the time of publication of this document and until replaced by the next printed or digital version. The latest version of this brochure is always available on the Paroc Panel System's website. Our information material presents applications for which the functions and technical properties of our products have been approved. However, the information does not mean a commercial guarantee. We do not assume liability of the use of third party components used in the application or the installation of our products. We cannot warrant the suitability of our products if used in an area or conditions which are not provided in our information material. As a result of constant further development of our products we reserve the right to make alterations to our information material at any time. Paroc Panel System is a member of Kingspan Group.

March 2020



ul. Przemysłowa 20
27-300 Lipsko, Poland
Tel: +48 48 378 31 00
panelinfo@parocpanels.com
www.parocpanels.com

PRODUCT PROPERTIES FOR PANELS

USE	External walls, internal walls and ceilings	CORE	PAROC structural stone wool
PANEL TYPES	AST® L, AST® S, AST® F, AST® E, AST® Hidden Fix, AST® Roof Panel	WIDTH	Modular width: 1000*, 1150, 1200* mm
EXTERNAL FACING	Steel sheet, standard thickness 0.6 mm, Standard coating : PES, Spectrum	MAXIMUM LENGTH	14,3 m
INTERNAL FACING	Steel sheet, standard thickness 0.5 mm, Standard coating : PES, FDS	REACTION TO FIRE	Non-combustible, Euroclass A2-s1,d0 ²⁾
		SOUND INSULATION R_w	27... 32 dB

* Standard modular width is 1150 mm. Other panel widths upon request, please contact sales department.

EXTERNAL AND INTERNAL WALLS - VISIBLE FIX 1000/1150/1200 PW			Nominal thickness (mm)	U-value (W/m2K) 1)	Fire resistance, min 2) (horizontal/vertical)	Weight (kg/m2) 3)		
Stone wool core	AST® L	<p>External profile: M (micro), Line 200, Line 600, F (smooth)</p> <p>Modular width: : 1000*, 1150, 1200* mm</p> <p>Internal profile: Line 200, F (smooth)</p>	80	0,45	NPD	15		
			100	0,37		17		
			120	0,30		18		
			AST® S	150	0,24	EI 120/180	21	
				175	0,21		22	
				200	0,18		24	
	AST® F			80	0,48		EI 30/ EI 30	17
				100	0,38		EI 60/ EI 60	19
				120	0,32		EI 90/ EI 90	21
			150	0,26	EI 180/ EI 180	23		
			175	0,22	25			
			200	0,19	EI 240/ EI 240	28		
	AST® E		80	0,53	EI 45 / EI 90	19		
			100	0,43	EI 45 / EI 120	21		
			120	0,36	24			
			150	0,29	27			
			175	0,25	EI 240 / EI 240	30		
			200	0,22	33			
			60	0,72	-	17		
			80	0,53	EI 45 / EI 90	19		
100		0,43	EI 45 / EI 120	22				
120		0,36	24					
150		0,29	28					
175		0,25	EI 240 / EI 240	31				
200		0,22	34					
EXTERNAL WALLS - HIDDEN FIX 1000 PH			Nominal thickness (mm)	U-value (W/m2K) 1)	Fire rating, min 2) (horizontal/vertical)	Weight (kg/m2) 3)		
Stone wool core	Paroc AST® Hidden Fix Panel	<p>External profile: M (micro), C (minimicro), B (box), F (smooth)</p> <p>Modular width : 1000 mm</p> <p>Internal profile: B (box), F (smooth)</p>	60	0,68	EI 30 (o<->i) - 4,0m	17		
			80	0,50		19		
			100	0,40		21		
			120	0,33	EI 240 - 4,0 m (o->i) EI 60 - 6,0 m (o<->i)	23		
			150	0,27		26		
			160	0,25		27		
			175	0,23		28		
			200	0,20		30		
CEILINGS - VISIBLE FIX 1000/1150/1200 PW			Nominal thickness (mm)	U-value (W/m2K) 1)	Fire rating, min 2) (horizontal/vertical)	Weight (kg/m2) 3)		
Stone wool core	AST® E	<p>External profile: M (micro), Line 200, Line 600, F (smooth)</p> <p>Modular width: 1000*, 1150, 1200* mm</p> <p>Internal profile: Line 200, F (smooth)</p>	80	0,53	NPD	19		
			100	0,43	EI 60	22		
			120	0,36		24		
			150	0,29	EI 120	28		
			175	0,25		31		
			200	0,22		34		
ROOFS			Nominal thickness (mm)	U-value (W/m2K) 1)	Fire rating, min 2) (horizontal/vertical)	Weight (kg/m2) 3)		
Stone wool core	Paroc AST® Roof Panel	<p>External profile: T (trapez)</p> <p>Modular width: 1000 mm</p> <p>Internal profile: B (box)</p>	60	0,67	-	18		
			80	0,52	REI 90	20		
			100	0,41		22		
			120	0,34	REI 120	24		
			150	0,28		27		
			175	0,24		32		
			200	0,21		35		

NPD = No performance determined (not tested),
- = Not available

- 1) U-values including surface resistance $R_{si}+R_{se}=0,17$ m2K/W and the influence of joints.
- 2) Paroc Panel System panels are non-combustible and classified in Euroclass A2-s1, d0. For more information regarding details and spans contact Paroc Panel System/ Technical Support.
- 3) Panels with standard facings.



The information in this data sheet describes the conditions and technical properties of the disclosed products, valid at the time of publication of this document and until replaced by the next printed or digital version. The latest version of this data sheet is always available on the Paroc Panel System website. Our information material presents applications for which the functions and technical properties of our products have been approved. However, the information does not mean a commercial guarantee. We do not assume liability of the use of third party components used in the application or the installation of our products. We cannot warrant the suitability of our products if used in an area or conditions which are not provided in our information material.

ul. Przemysłowa 20
27-300 Lipsko
Tel: +48 48 378 31 00
panelinfo@parocpanels.com
www.parocpanels.com