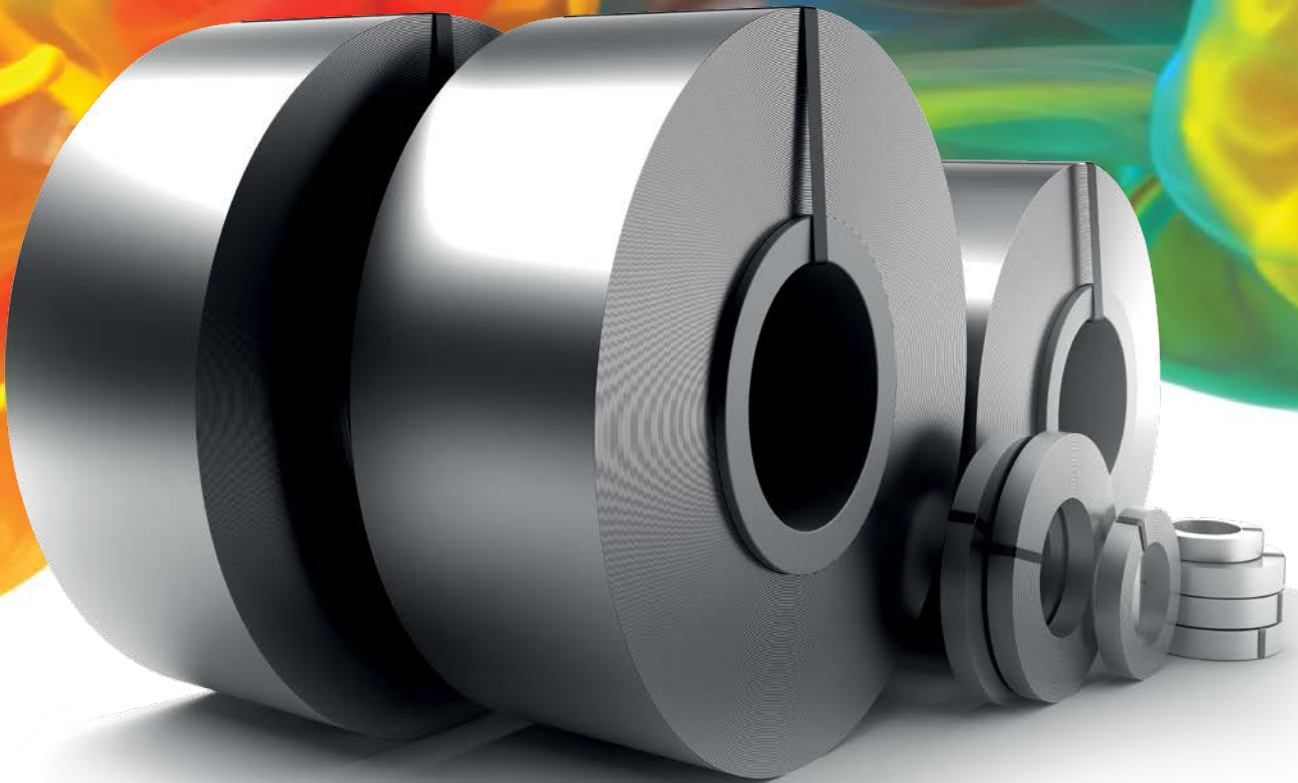


Insulated Sectional Door Systems
Global

Kingspan Colour Range

Industrial and Residential Door Panels




Kingspan[®]

Kingspan Colour Range

Standard Colours						
Coating	Colour	FS		TR		
		500	610	500	610	
Aluminium	Alu				○	
Deepmatt	7016	○	○			
	9005	○	○			
Film	Dark Oak	○	○			
	Luxe Oak	○	○			
	Kingschester	○	○			
Polyester	3000	△	○	△	○	
	5010	△	○	△	○	
	8014	○	○	○	○	
	9002	○	○	○	○	
	9010	○	○	○	○	
	9016	○	○	○	○	
Polygrain	7016	○	○	○	○	
	7039	○	○	○	○	
	9006	○	○	○	○	
	9007	○	○	○	○	
	9010	○	○	○	○	
Polygrain 0.6	7016	○	○			
	9010	○	○			
Pu	9010	○	○	○	○	
XI Forte	Cornflower Blue				○	
	Flame Red				○	
	Goosewing Grey				○	
	Merlin Grey				○	
	Olive Green				○	
	Sapphire Blue				○	
	Sunflower Yellow				○	
	Anthracite				○	
	Juniper Green				○	
	Azure Blue				○	
	Khaki Green				○	
	Leaf Green				○	
	Pearl White				○	
	Van Dyke Brown				○	

Non-Standard Colours						
Coating	Colour	FS		TR		
		500	610	500	610	
Film	Rustic	□	□			
	Mahogany	□	□			
Polyester	1015	□	□	□	□	
	6005	□	□	□	□	
	6009	□	□	□	□	
	6020	□	□	□	□	
	7022	□	□	□	□	
	9005	□	□	□	□	
Sandgrain	Black 2100	□	□	□	□	
Lamtop	Luxe Oak	□	□			
Prepainted	Wood Brown	□	□			
	Wood Dark	□	□			
Polygrain	9016	□	□			

○ Standard	
Lead-time	10 to 15 working days
MOQ	100 ml

△ Specials	
Lead-time	20 working days
MOQ	250 ml
RC/RK	20 working days
80mm	20 working days
Height 460/530/560	upon request

□ Non-Standard	
Lead-time	on request
MOQ	250 ml

Internal Sheet Standard RAL 9010

Kingspan Door Components S.A.

Zone Industrielle de l'Europe 1A
7900 Leuze-en-Hainaut, Belgium

T: +32 (0)69 86 82 22

F: +32 (0)69 86 82 20

E: info@kingspandoor.com

www.kingspandoor.com

For the product offering in other markets please contact your local sales representative or visit www.kingspan.com

Care has been taken to ensure that the contents of this publication are accurate, but Kingspan Limited and its subsidiary companies do not accept responsibility for errors or for information that is found to be misleading. Suggestions for, or description of, the end use or application of products or methods of working are for information only and Kingspan Limited and its subsidiaries accept no liability in respect thereof.

Q1/2020



For any price request on the specials and non-standards, please contact your sales manager.

The availability and lead time of colours will be evaluated quarterly. Please check our website for the latest version of this colour stock document. Only the latest version of this document applies.