



TITLE: Vieo Cold Roof (On Ply, OSB or Timber Deck)

DWG NO: V1_CR_TD_System

SCALE: NTS

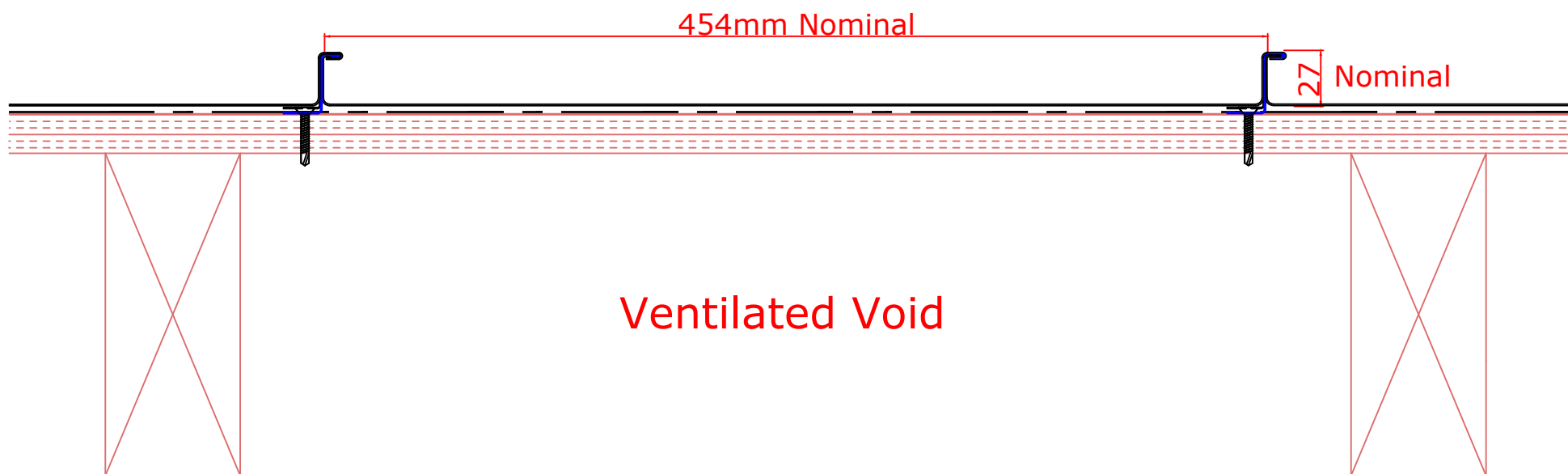
ISSUE DATE: Feb 2019

Drawn by: CD Checked by: MP

(To be read in conjunction with Vieo system specification documents)

**Euroclad Group Ltd,
Wentloog Corporate Park,
Wentloog Road, Cardiff CF3 2ER
Tel: +44 (0)2922 010101
Fax: +44 (0)2922 010122
Website: www.vieorooft.com**

This draft drawing has been supplied by Euro Clad Ltd for the purpose of guidance free of charge. It is a suggested typical detail and as such should not be assumed suitable for any specific project or application. No responsibility is assumed for errors or misinterpretations resulting from the information contained in the drawing. Details are for illustration only and no liability is accepted. We reserve the right to change the details without notice. The drawing is copyright, it remains our property.



Ply/Timber/OSB deck & rafters by
Others in accordance with relevant
standards. Min thickness recommended
18mm Ply, 15mm OSB 3.



TITLE: Vieo Cold Roof (On Ply, OSB or Timber Deck)

DWG NO: V1_CR_TD_System

SCALE: NTS

ISSUE DATE: Feb 2019

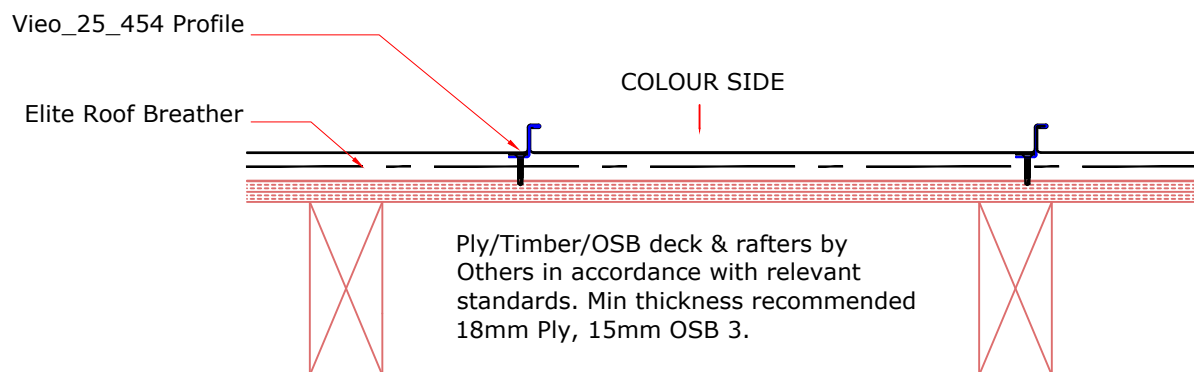
Drawn by: CD Checked by: MP

(To be read in conjunction with Vieo system specification documents)

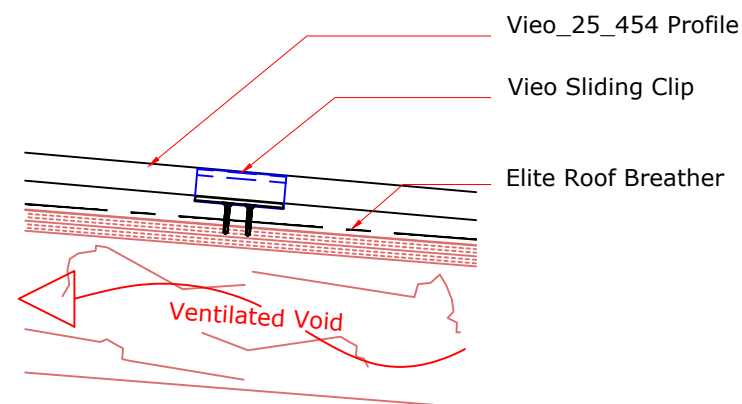
**Euroclad Group Ltd,
Wentloog Corporate Park,
Wentloog Road, Cardiff CF3 2ER
Tel: +44 (0)2922 010101
Fax: +44 (0)2922 010122
Website: www.vieorooft.com**

This draft drawing has been supplied by Euro Clad Ltd for the purpose of guidance free of charge. It is a suggested typical detail and as such should not be assumed suitable for any specific project or application. No responsibility is assumed for errors or misinterpretations resulting from the information contained in the drawing. Details are for illustration only and no liability is accepted. We reserve the right to change the details without notice. The drawing is copyright, it remains our property.

UPSLOPE SECTION

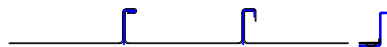


THROUGH SECTION



Vieo Sheet Seaming Sequence

"Stage 1 Seam"



"Stage 2 Seam" (Aluminium Material Only)





TITLE: Vieo Cold Roof (On Ply, OSB or Timber Deck)

DWG NO: V1_CR_TD_System

SCALE: NTS

ISSUE DATE: Feb 2019

Drawn by: CD Checked by: MP

(To be read in conjunction with Vieo system specification documents)

**Euroclad Group Ltd,
Wentloog Corporate Park,
Wentloog Road, Cardiff CF3 2ER
Tel: +44 (0)2922 010101
Fax: +44 (0)2922 010122
Website: www.vieorooft.com**

This draft drawing has been supplied by Euro Clad Ltd for the purpose of guidance free of charge. It is a suggested typical detail and as such should not be assumed suitable for any specific project or application. No responsibility is assumed for errors or misinterpretations resulting from the information contained in the drawing. Details are for illustration only and no liability is accepted. We reserve the right to change the details without notice. The drawing is copyright, it remains our property.

Typical arrangement: 1260mm in central areas, reduced clip centres at ridge eaves and perimeters and in high load areas.

Check system capacity against project loads and adjust if necessary

Maximum clip centres:

Determined by project wind suction loads as follows:

1260mm for loads up to 1.5kN/m²

660mm for loads 1.5 to 2.0kN/m²

300mm for loads 2.0 to 4.0kN/m²

Where substrate is min 18mm Ply or min 15mm OSB 3





TITLE: Vieo Cold Roof (On Ply, OSB or Timber Deck)

DWG NO: V1_CR_TD_System

SCALE: NTS

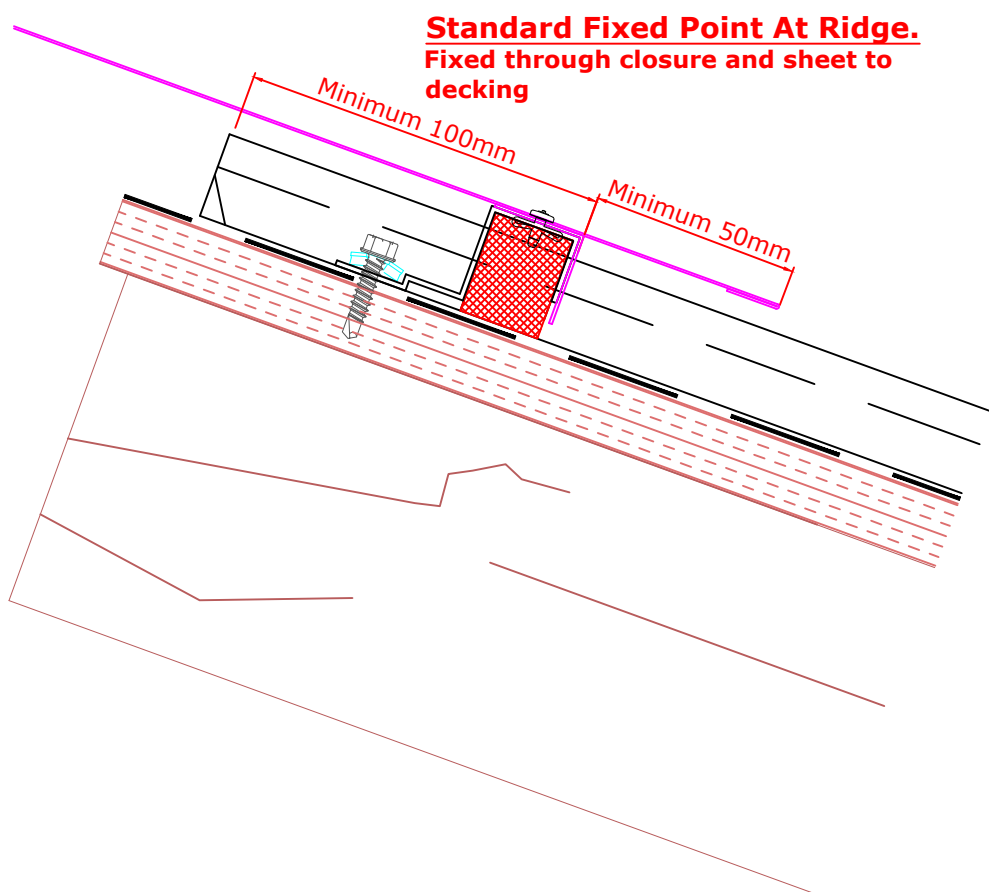
ISSUE DATE: Feb 2019

Drawn by: CD Checked by: MP

(To be read in conjunction with Vieo system specification documents)

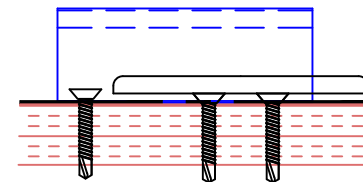
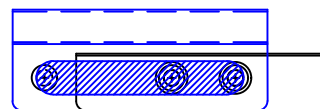
**Euroclad Group Ltd,
Wentloog Corporate Park,
Wentloog Road, Cardiff CF3 2ER
Tel: +44 (0)2922 010101
Fax: +44 (0)2922 010122
Website: www.vieorooft.com**

This draft drawing has been supplied by Euro Clad Ltd for the purpose of guidance free of charge. It is a suggested typical detail and as such should not be assumed suitable for any specific project or application. No responsibility is assumed for errors or misinterpretations resulting from the information contained in the drawing. Details are for illustration only and no liability is accepted. We reserve the right to change the details without notice. The drawing is copyright, it remains our property.



Alternative for use elsewhere on slope:
Create Fixed Point using Clip with additional fixing.

Assembled Plan View



Take note of anticipated direction of travel when laying out sheets & fixing.



TITLE: Vieo Cold Roof (On Ply, OSB or Timber Deck)

DWG NO: V1_CR_TD_System

SCALE: NTS

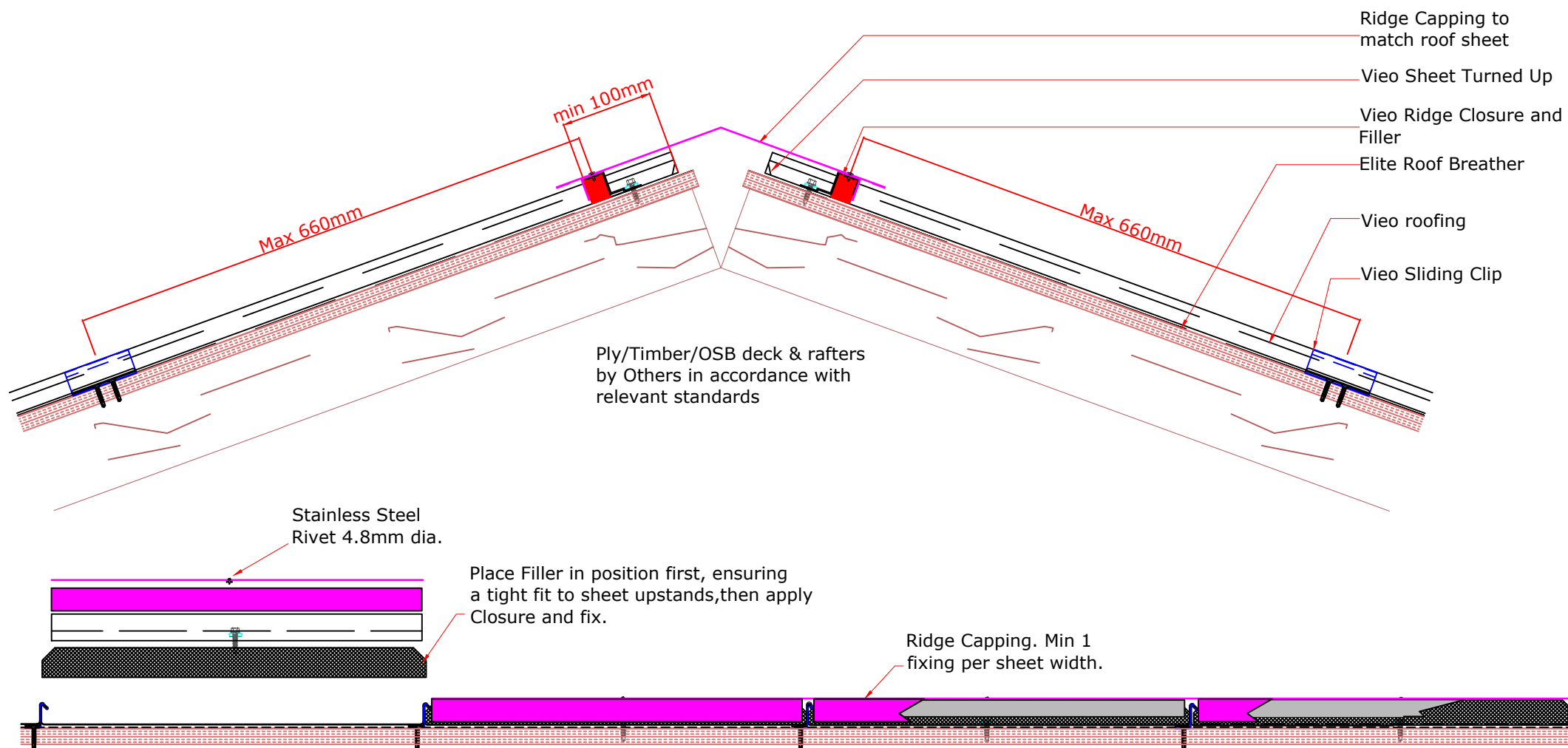
ISSUE DATE: Feb 2019

Drawn by: CD Checked by: MP

(To be read in conjunction with Vieo system specification documents)

**Euroclad Group Ltd,
Wentloog Corporate Park,
Wentloog Road, Cardiff CF3 2ER
Tel: +44 (0)2922 010101
Fax: +44 (0)2922 010122
Website: www.vieorooft.com**

This draft drawing has been supplied by Euro Clad Ltd for the purpose of guidance free of charge. It is a suggested typical detail and as such should not be assumed suitable for any specific project or application. No responsibility is assumed for errors or misinterpretations resulting from the information contained in the drawing. Details are for illustration only and no liability is accepted. We reserve the right to change the details without notice. The drawing is copyright, it remains our property.





TITLE: Vieo Cold Roof (On Ply, OSB or Timber Deck)

DWG NO: V1_CR_TD_System

SCALE: NTS

ISSUE DATE: Feb 2019

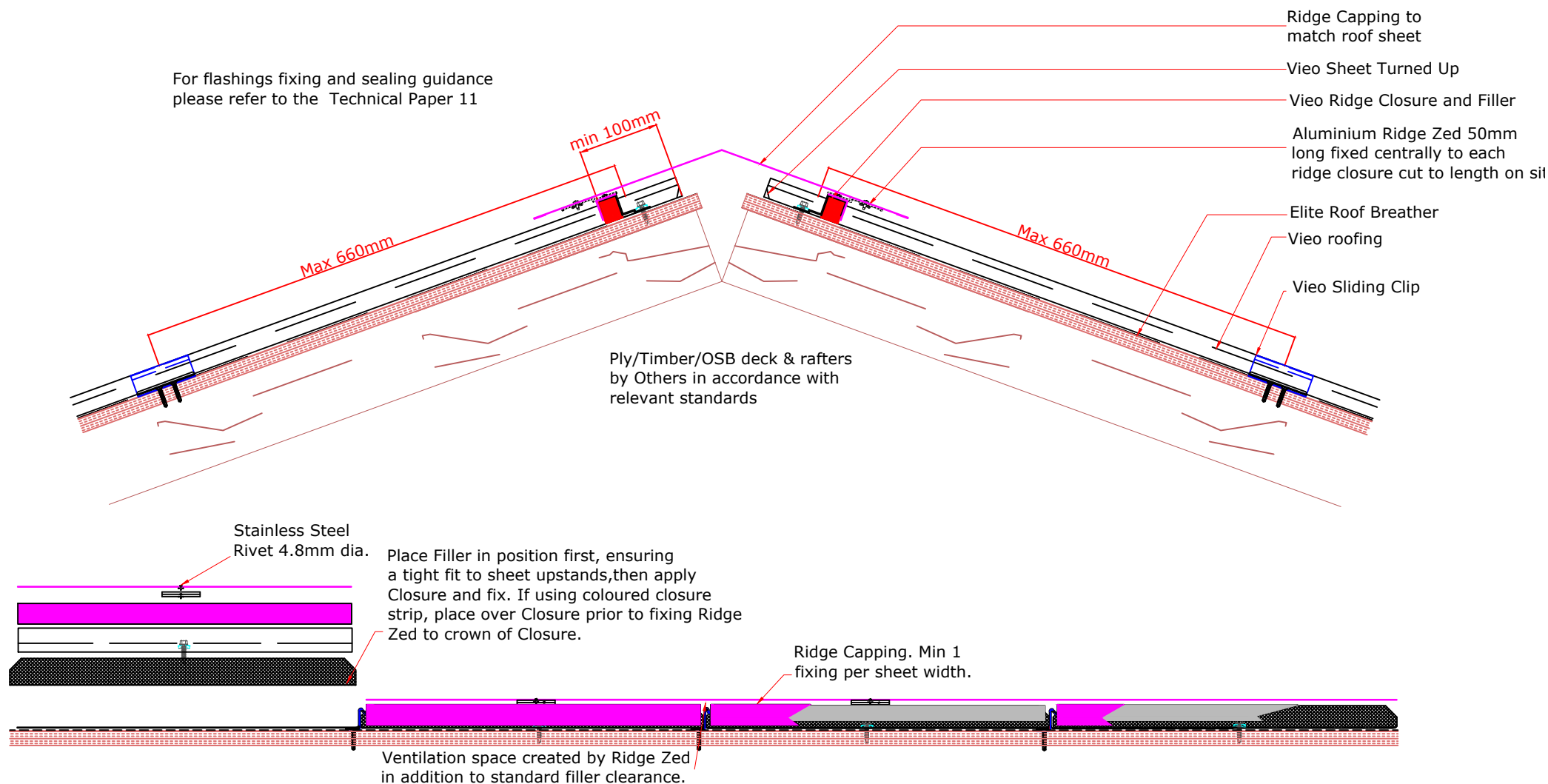
Drawn by: CD Checked by: MP

(To be read in conjunction with Vieo system specification documents)

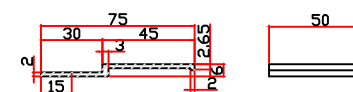
**Euroclad Group Ltd,
Wentloog Corporate Park,
Wentloog Road, Cardiff CF3 2ER
Tel: +44 (0)2922 010101
Fax: +44 (0)2922 010122
Website: www.vieorooft.com**

This draft drawing has been supplied by Euro Clad Ltd for the purpose of guidance free of charge. It is a suggested typical detail and as such should not be assumed suitable for any specific project or application. No responsibility is assumed for errors or misinterpretations resulting from the information contained in the drawing. Details are for illustration only and no liability is accepted. We reserve the right to change the details without notice. The drawing is copyright, it remains our property.

For flashings fixing and sealing guidance please refer to the Technical Paper 11



Vieo Ridge Zed (VIEO Z50)





TITLE: Vieo Cold Roof (On Ply, OSB or Timber Deck)

DWG NO: V1_CR_TD_System

SCALE: NTS

ISSUE DATE: Feb 2019

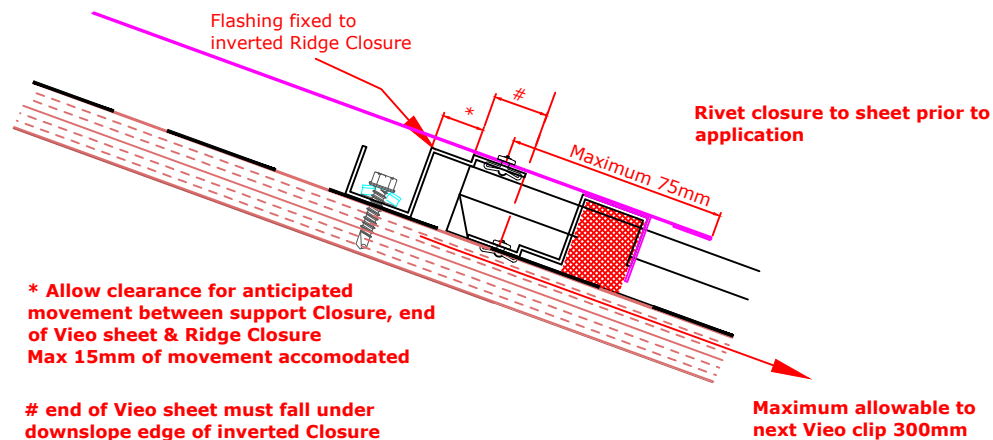
Drawn by: CD Checked by: MP

(To be read in conjunction with Vieo system specification documents)

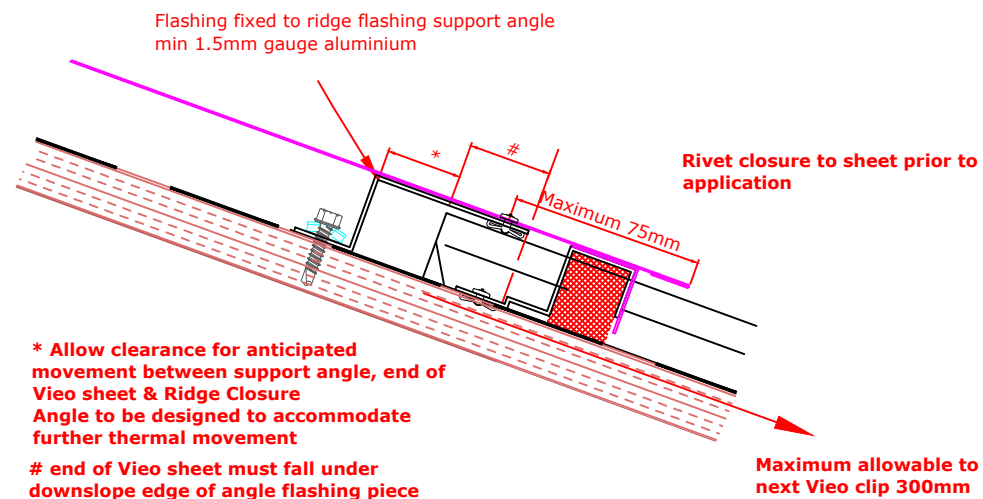
**Euroclad Group Ltd,
Wentloog Corporate Park,
Wentloog Road, Cardiff CF3 2ER
Tel: +44 (0)2922 010101
Fax: +44 (0)2922 010122
Website: www.vieorooft.com**

This draft drawing has been supplied by Euro Clad Ltd for the purpose of guidance free of charge. It is a suggested typical detail and as such should not be assumed suitable for any specific project or application. No responsibility is assumed for errors or misinterpretations resulting from the information contained in the drawing. Details are for illustration only and no liability is accepted. We reserve the right to change the details without notice. The drawing is copyright, it remains our property.

**Ridge Expansion Detail
(for use when fixed point
is not created at ridge).**



**Ridge Expansion Detail
(for use when fixed point
is not created at ridge).**





TITLE: Vieo Cold Roof (On Ply, OSB or Timber Deck)

DWG NO: V1_CR_TD_System

SCALE: NTS

ISSUE DATE: Feb 2019

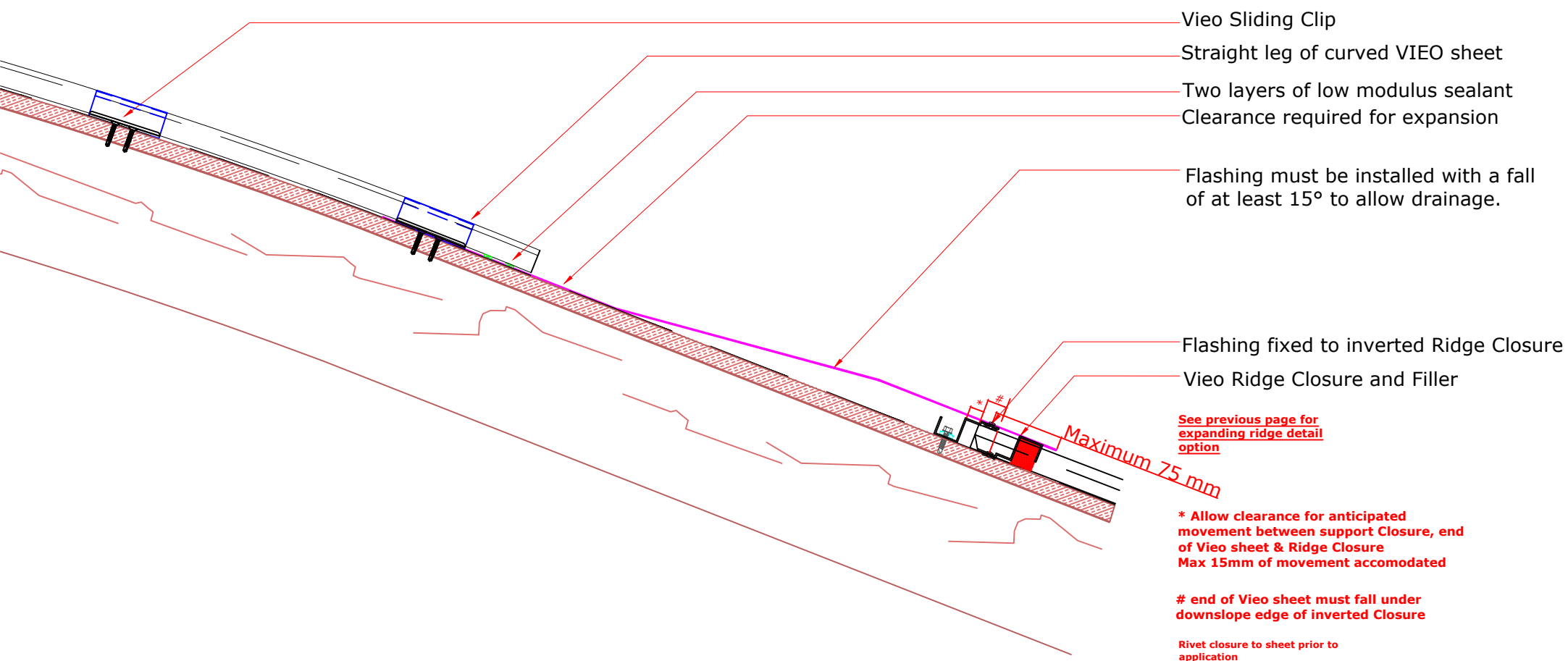
Drawn by: CD Checked by: MP

(To be read in conjunction with Vieo system specification documents)

**Euroclad Group Ltd,
Wentloog Corporate Park,
Wentloog Road, Cardiff CF3 2ER
Tel: +44 (0)2922 010101
Fax: +44 (0)2922 010122
Website: www.vieorooft.com**

This draft drawing has been supplied by Euro Clad Ltd for the purpose of guidance free of charge. It is a suggested typical detail and as such should not be assumed suitable for any specific project or application. No responsibility is assumed for errors or misinterpretations resulting from the information contained in the drawing. Details are for illustration only and no liability is accepted. We reserve the right to change the details without notice. The drawing is copyright, it remains our property.

The detail below can be used on pitches of $\geq 15^\circ$





TITLE: Vieo Cold Roof (On Ply, OSB or Timber Deck)

DWG NO: V1_CR_TD_System

SCALE: NTS

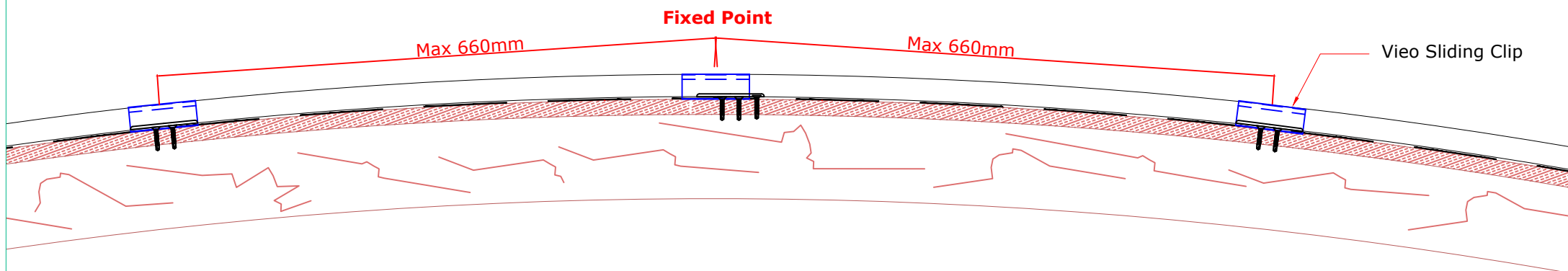
ISSUE DATE: Feb 2019

Drawn by: CD Checked by: MP

(To be read in conjunction with Vieo system specification documents)

**Euroclad Group Ltd,
Wentloog Corporate Park,
Wentloog Road, Cardiff CF3 2ER
Tel: +44 (0)2922 010101
Fax: +44 (0)2922 010122
Website: www.vieorooft.com**

This draft drawing has been supplied by Euro Clad Ltd for the purpose of guidance free of charge. It is a suggested typical detail and as such should not be assumed suitable for any specific project or application. No responsibility is assumed for errors or misinterpretations resulting from the information contained in the drawing. Details are for illustration only and no liability is accepted. We reserve the right to change the details without notice. The drawing is copyright, it remains our property.





TITLE: Vieo Cold Roof (On Ply, OSB or Timber Deck)

DWG NO: V1_CR_TD_System

SCALE: NTS

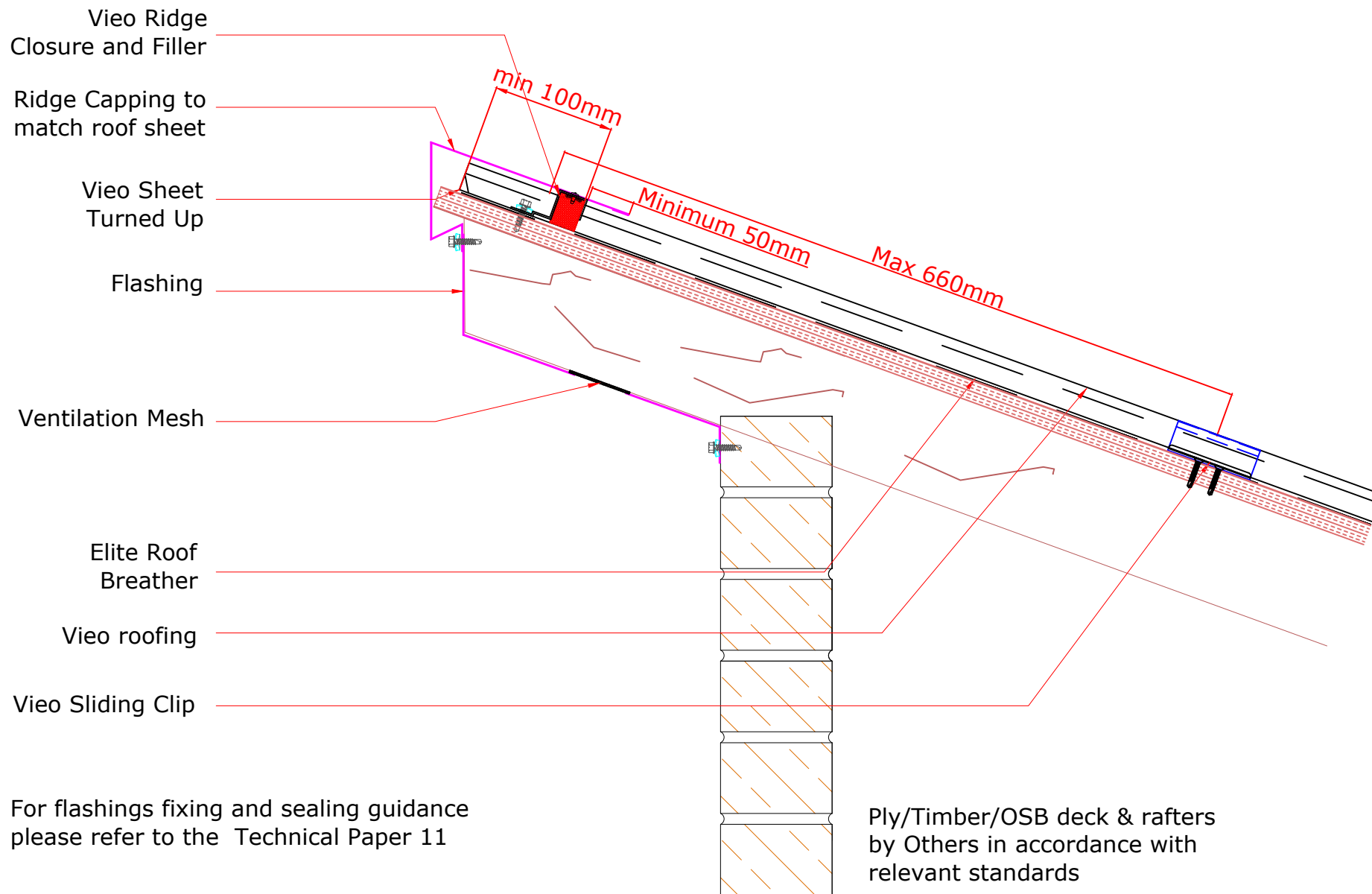
ISSUE DATE: Feb 2019

Drawn by: CD Checked by: MP

(To be read in conjunction with Vieo system specification documents)

**Euroclad Group Ltd,
Wentloog Corporate Park,
Wentloog Road, Cardiff CF3 2ER
Tel: +44 (0)2922 010101
Fax: +44 (0)2922 010122
Website: www.vieorooft.com**

This draft drawing has been supplied by Euro Clad Ltd for the purpose of guidance free of charge. It is a suggested typical detail and as such should not be assumed suitable for any specific project or application. No responsibility is assumed for errors or misinterpretations resulting from the information contained in the drawing. Details are for illustration only and no liability is accepted. We reserve the right to change the details without notice. The drawing is copyright, it remains our property.





TITLE: Vieo Cold Roof (On Ply, OSB or Timber Deck)

DWG NO: V1_CR_TD_System

SCALE: NTS

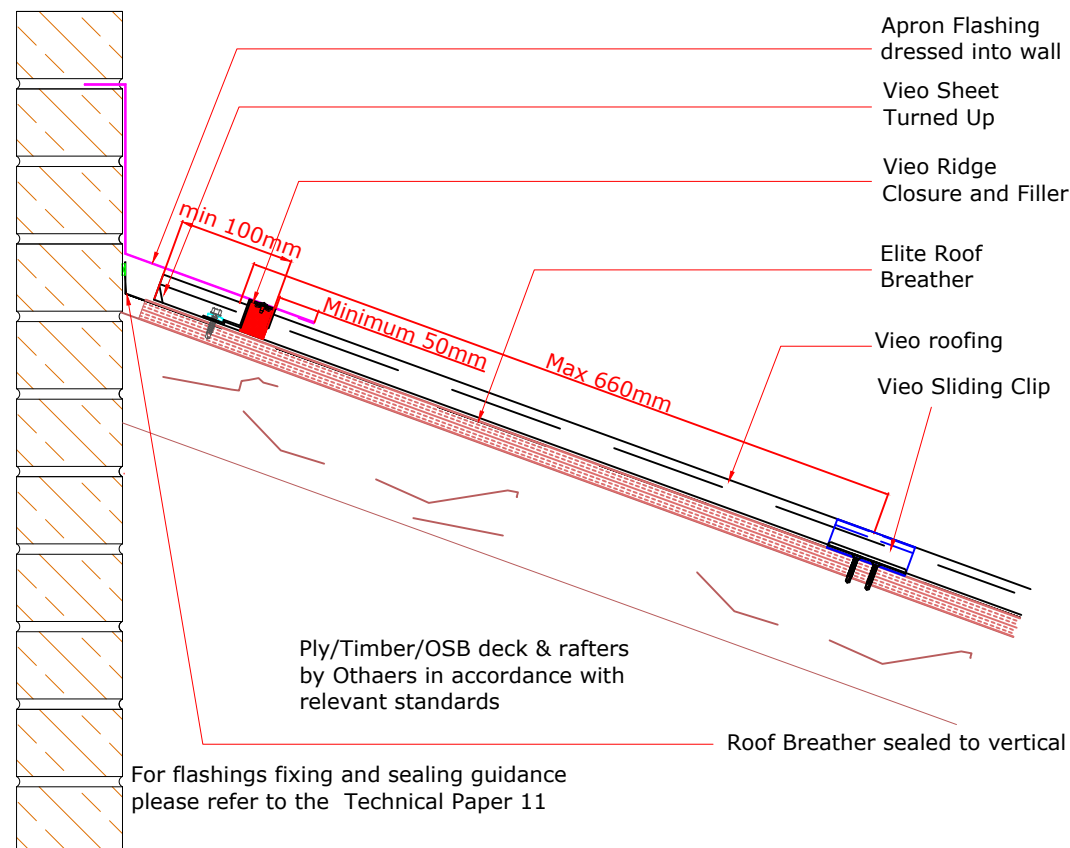
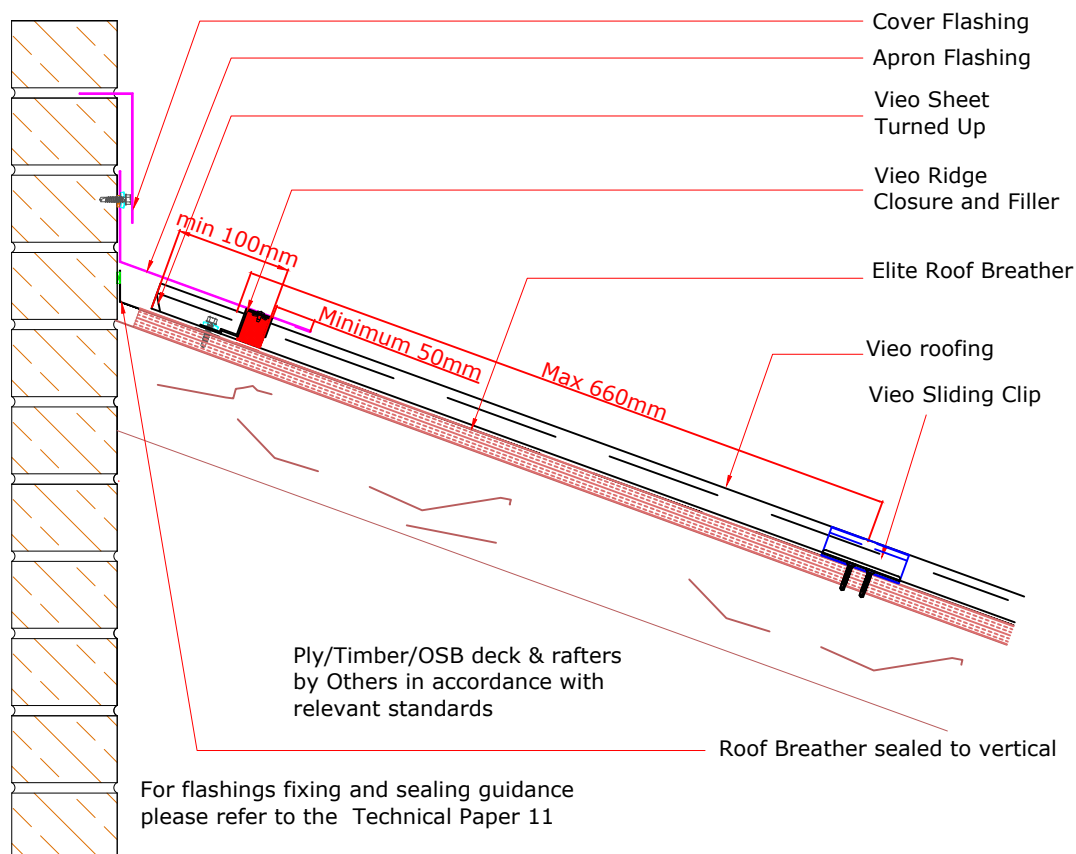
ISSUE DATE: Feb 2019

Drawn by: CD Checked by: MP

(To be read in conjunction with Vieo system specification documents)

**Euroclad Group Ltd,
Wentloog Corporate Park,
Wentloog Road, Cardiff CF3 2ER
Tel: +44 (0)2922 010101
Fax: +44 (0)2922 010122
Website: www.vieorooft.com**

This draft drawing has been supplied by Euro Clad Ltd for the purpose of guidance free of charge. It is a suggested typical detail and as such should not be assumed suitable for any specific project or application. No responsibility is assumed for errors or misinterpretations resulting from the information contained in the drawing. Details are for illustration only and no liability is accepted. We reserve the right to change the details without notice. The drawing is copyright, it remains our property.





TITLE: Vieo Cold Roof (On Ply, OSB or Timber Deck)

DWG NO: V1_CR_TD_System

SCALE: NTS

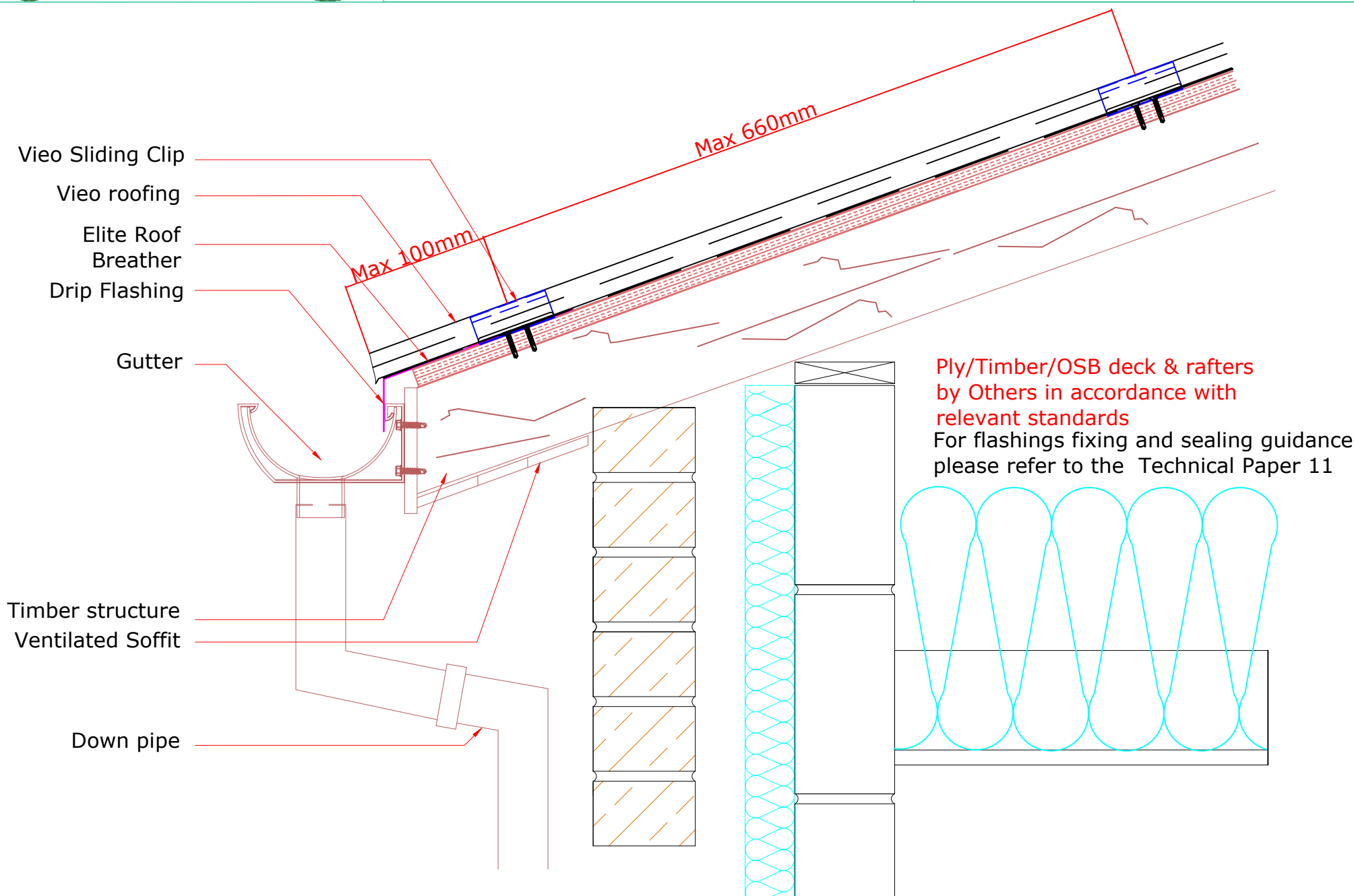
ISSUE DATE: Feb 2019

Drawn by: CD Checked by: MP

(To be read in conjunction with Vieo system specification documents)

**Euroclad Group Ltd,
Wentloog Corporate Park,
Wentloog Road, Cardiff CF3 2ER
Tel: +44 (0)2922 010101
Fax: +44 (0)2922 010122
Website: www.vieorooft.com**

This draft drawing has been supplied by Euro Clad Ltd for the purpose of guidance free of charge. It is a suggested typical detail and as such should not be assumed suitable for any specific project or application. No responsibility is assumed for errors or misinterpretations resulting from the information contained in the drawing. Details are for illustration only and no liability is accepted. We reserve the right to change the details without notice. The drawing is copyright, it remains our property.





TITLE: Vieo Cold Roof (On Ply, OSB or Timber Deck)

DWG NO: V1_CR_TD_System

SCALE: NTS

ISSUE DATE: Feb 2019

Drawn by: CD Checked by: MP

(To be read in conjunction with Vieo system specification documents)

**Euroclad Group Ltd,
Wentloog Corporate Park,
Wentloog Road, Cardiff CF3 2ER
Tel: +44 (0)2922 010101
Fax: +44 (0)2922 010122
Website: www.vieoroof.com**

This draft drawing has been supplied by Euro Clad Ltd for the purpose of guidance free of charge. It is a suggested typical detail and as such should not be assumed suitable for any specific project or application. No responsibility is assumed for errors or misinterpretations resulting from the information contained in the drawing. Details are for illustration only and no liability is accepted. We reserve the right to change the details without notice. The drawing is copyright, it remains our property.

Restraining Angle

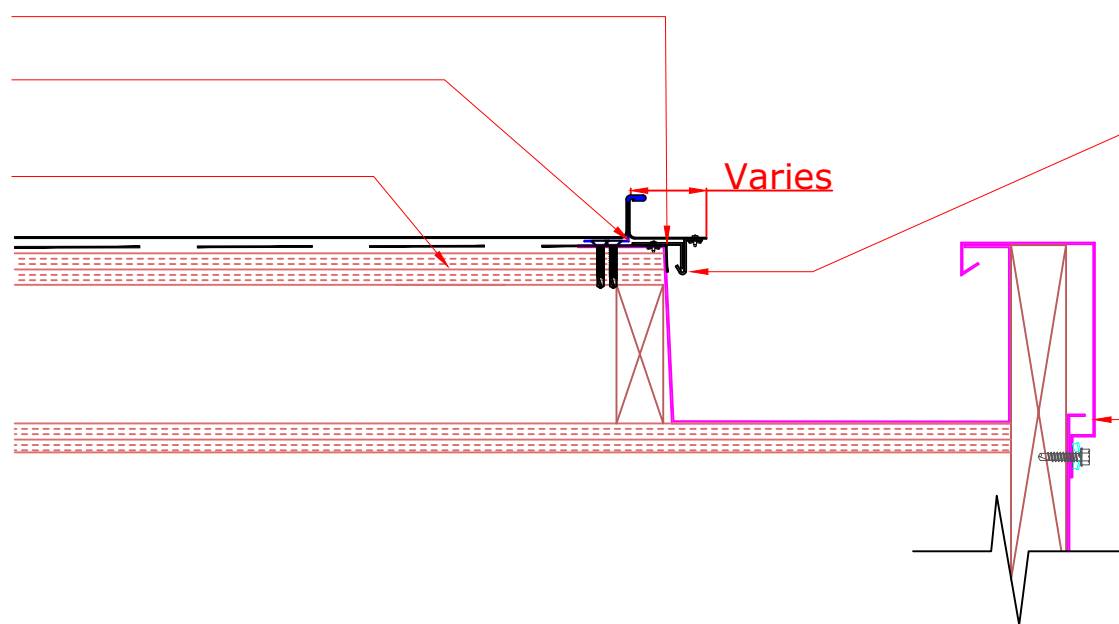
Angled Vieo Clip

Ply cut back to suit requirements

Varies

"J" drip angle rivetted
at 300mm centres to
raking edge of Vieo

Verge Flashing





TITLE: Vieo Cold Roof (On Ply, OSB or Timber Deck)

DWG NO: V1_CR_TD_System

SCALE: NTS

ISSUE DATE: Feb 2019

Drawn by: CD Checked by: MP

(To be read in conjunction with Vieo system specification documents)

**Euroclad Group Ltd,
Wentloog Corporate Park,
Wentloog Road, Cardiff CF3 2ER
Tel: +44 (0)2922 010101
Fax: +44 (0)2922 010122
Website: www.vieorooft.com**

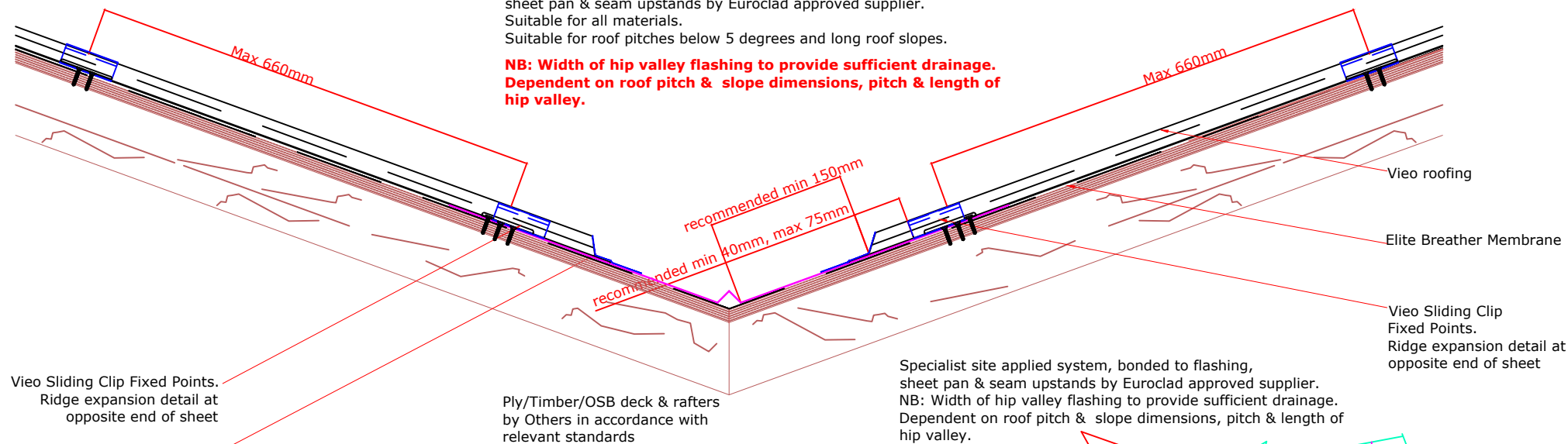
This draft drawing has been supplied by Euro Clad Ltd for the purpose of guidance free of charge. It is a suggested typical detail and as such should not be assumed suitable for any specific project or application. No responsibility is assumed for errors or misinterpretations resulting from the information contained in the drawing. Details are for illustration only and no liability is accepted. We reserve the right to change the details without notice. The drawing is copyright, it remains our property.

Bonded Hip Valley Detail

Specialist site applied system, bonded to flashing, sheet pan & seam upstands by Euroclad approved supplier. Suitable for all materials.

Suitable for roof pitches below 5 degrees and long roof slopes.

NB: Width of hip valley flashing to provide sufficient drainage. Dependent on roof pitch & slope dimensions, pitch & length of hip valley.



Vieo Sliding Clip Fixed Points.
Ridge expansion detail at
opposite end of sheet

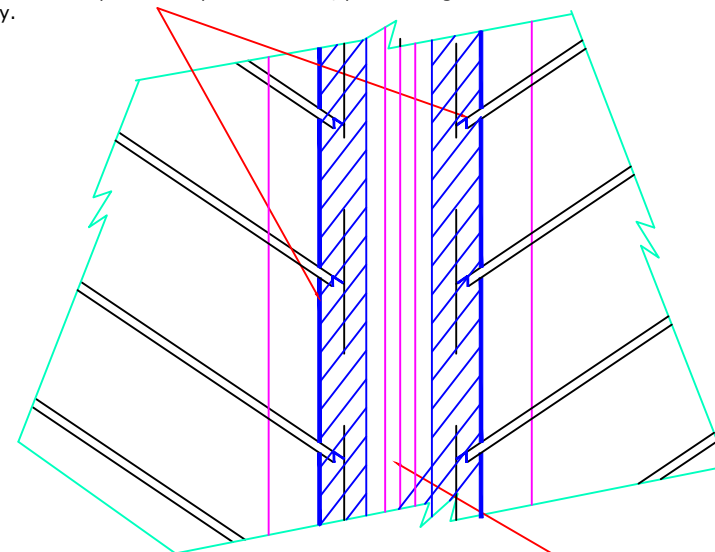
Sheet pan supplied extended

Ply/Timber/OSB deck & rafters
by Others in accordance with
relevant standards

Specialist site applied system, bonded to flashing,
sheet pan & seam upstands by Euroclad approved supplier.
NB: Width of hip valley flashing to provide sufficient drainage.
Dependent on roof pitch & slope dimensions, pitch & length of
hip valley.

**Suitable for valleys or hip valleys
where pitches are 15° or less**

End joints in valley flashing oriented overlapping 150mm
downslope & joined with specialist site applied
system by Euroclad recommended supplier.
Site welding for aluminium only.



Specialist site applied system may be bonded
to flashing in 2 strips or may cover the flashing
entirely.



TITLE: Vieo Cold Roof (On Ply, OSB or Timber Deck)

DWG NO: V1_CR_TD_System

SCALE: NTS

ISSUE DATE: Feb 2019

Drawn by: CD Checked by: MP

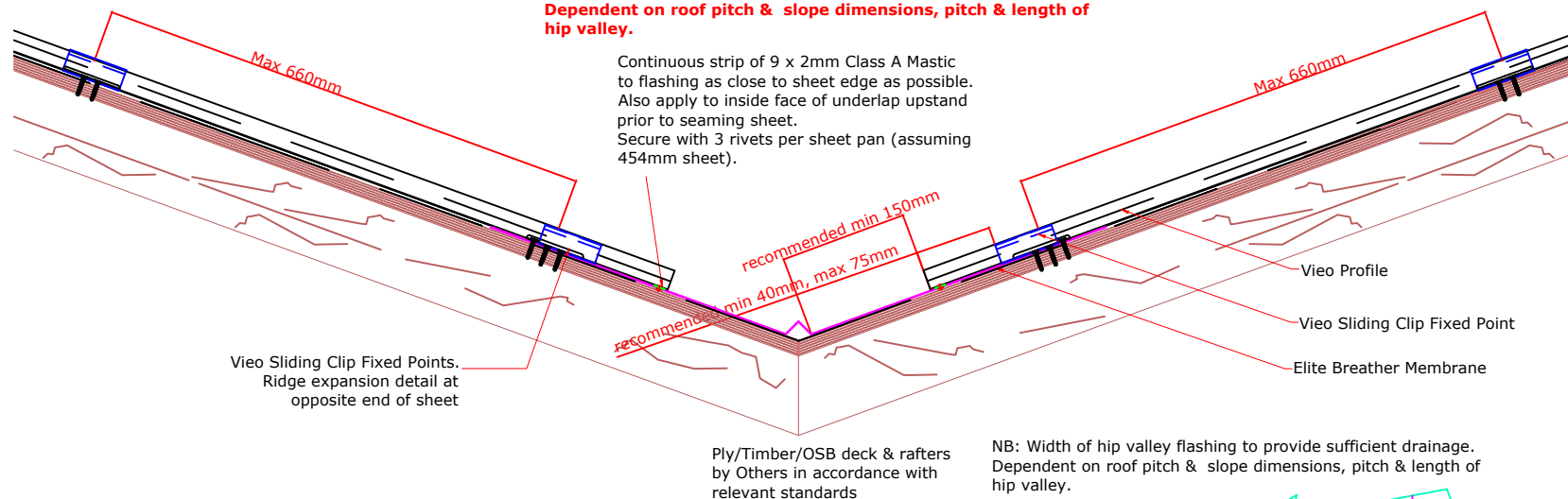
(To be read in conjunction with Vieo system specification documents)

**Euroclad Group Ltd,
Wentloog Corporate Park,
Wentloog Road, Cardiff CF3 2ER
Tel: +44 (0)2922 010101
Fax: +44 (0)2922 010122
Website: www.vieorooft.com**

This draft drawing has been supplied by Euro Clad Ltd for the purpose of guidance free of charge. It is a suggested typical detail and as such should not be assumed suitable for any specific project or application. No responsibility is assumed for errors or misinterpretations resulting from the information contained in the drawing. Details are for illustration only and no liability is accepted. We reserve the right to change the details without notice. The drawing is copyright, it remains our property.

Hip Valley Detail for roof pitches $>5^\circ$

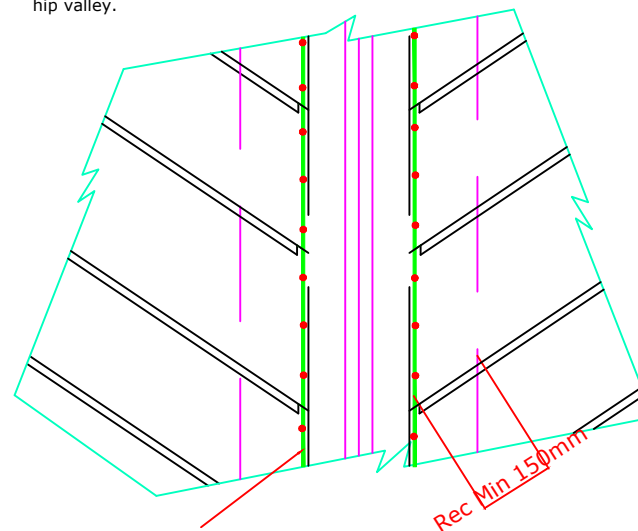
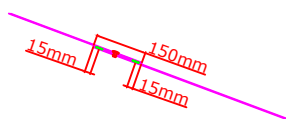
NB: Width of hip valley flashing to provide sufficient drainage. Dependent on roof pitch & slope dimensions, pitch & length of hip valley.



NB: Width of hip valley flashing to provide sufficient drainage. Dependent on roof pitch & slope dimensions, pitch & length of hip valley.

Only suitable where hip valley pitches are $>15^\circ$

End joints in valley flashing oriented overlapping 150mm downslope. Rivetted at max 50mm centres with 2 rows of 9 x 3mm mastic positioned 15mm from each end of lap.



Continuous strip of 9 x 2mm Class A Mastic to flashing as close to sheet edge as possible. Also apply to inside face of underlap upstand prior to seaming sheet. Secure with 3 rivets per sheet pan (assuming 454mm sheet).



TITLE: Vieo Cold Roof (On Ply, OSB or Timber Deck)

DWG NO: V1_CR_TD_System

SCALE: NTS

ISSUE DATE: Feb 2019

Drawn by: CD Checked by: MP

(To be read in conjunction with Vieo system specification documents)

**Euroclad Group Ltd,
Wentloog Corporate Park,
Wentloog Road, Cardiff CF3 2ER
Tel: +44 (0)2922 010101
Fax: +44 (0)2922 010122
Website: www.vieorooft.com**

This draft drawing has been supplied by Euro Clad Ltd for the purpose of guidance free of charge. It is a suggested typical detail and as such should not be assumed suitable for any specific project or application. No responsibility is assumed for errors or misinterpretations resulting from the information contained in the drawing. Details are for illustration only and no liability is accepted. We reserve the right to change the details without notice. The drawing is copyright, it remains our property.

Verge Flashing
(Variable bespoke
sizes, made to order)

Verge Flashing

Sheet seamed to clip

Stainless Steel Rivet 4.8mm dia

Verge Closure fixed at 330mm centres

Verge Flashing

Sheet seamed to clip

Stainless Steel Rivet 4.8mm dia

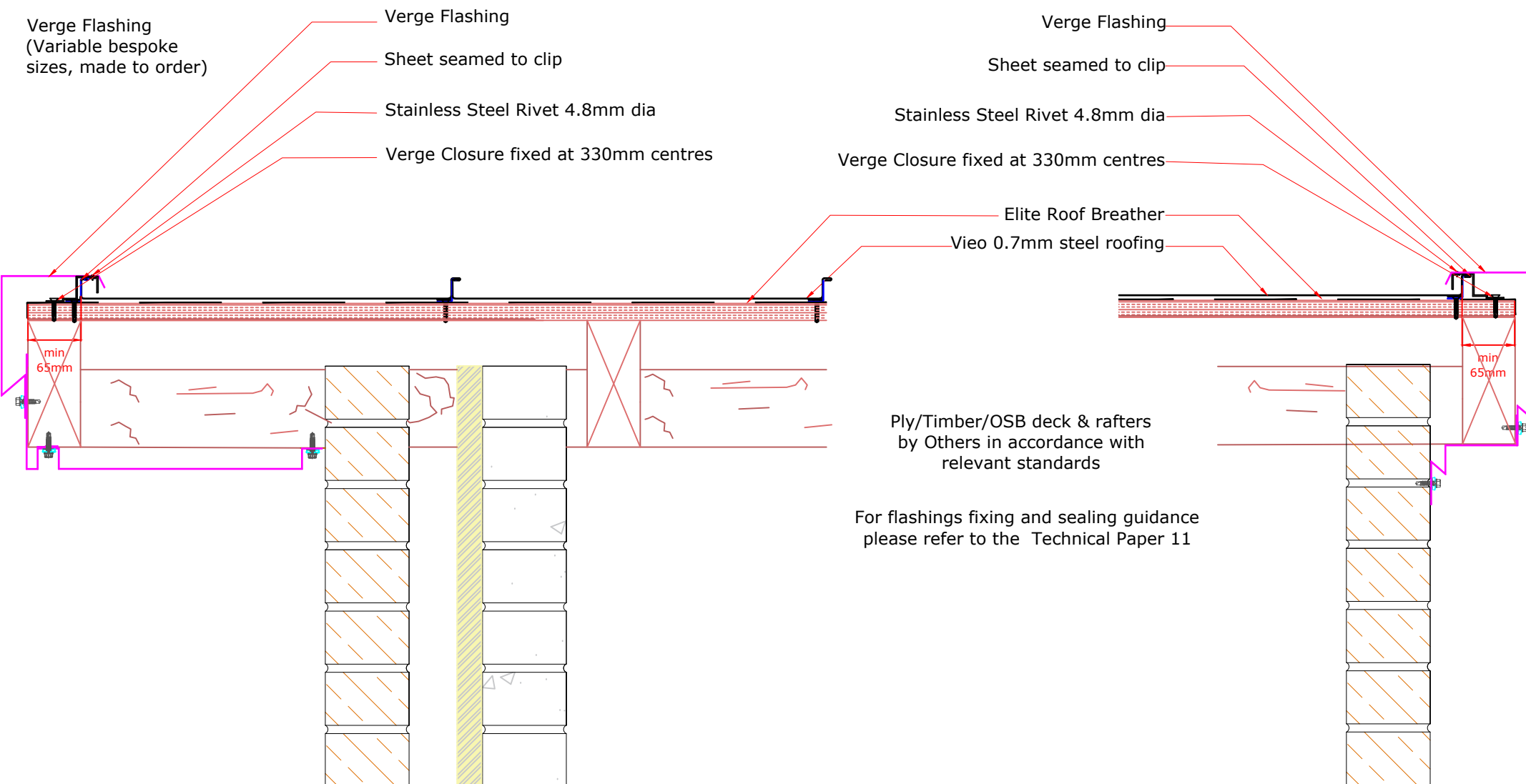
Verge Closure fixed at 330mm centres

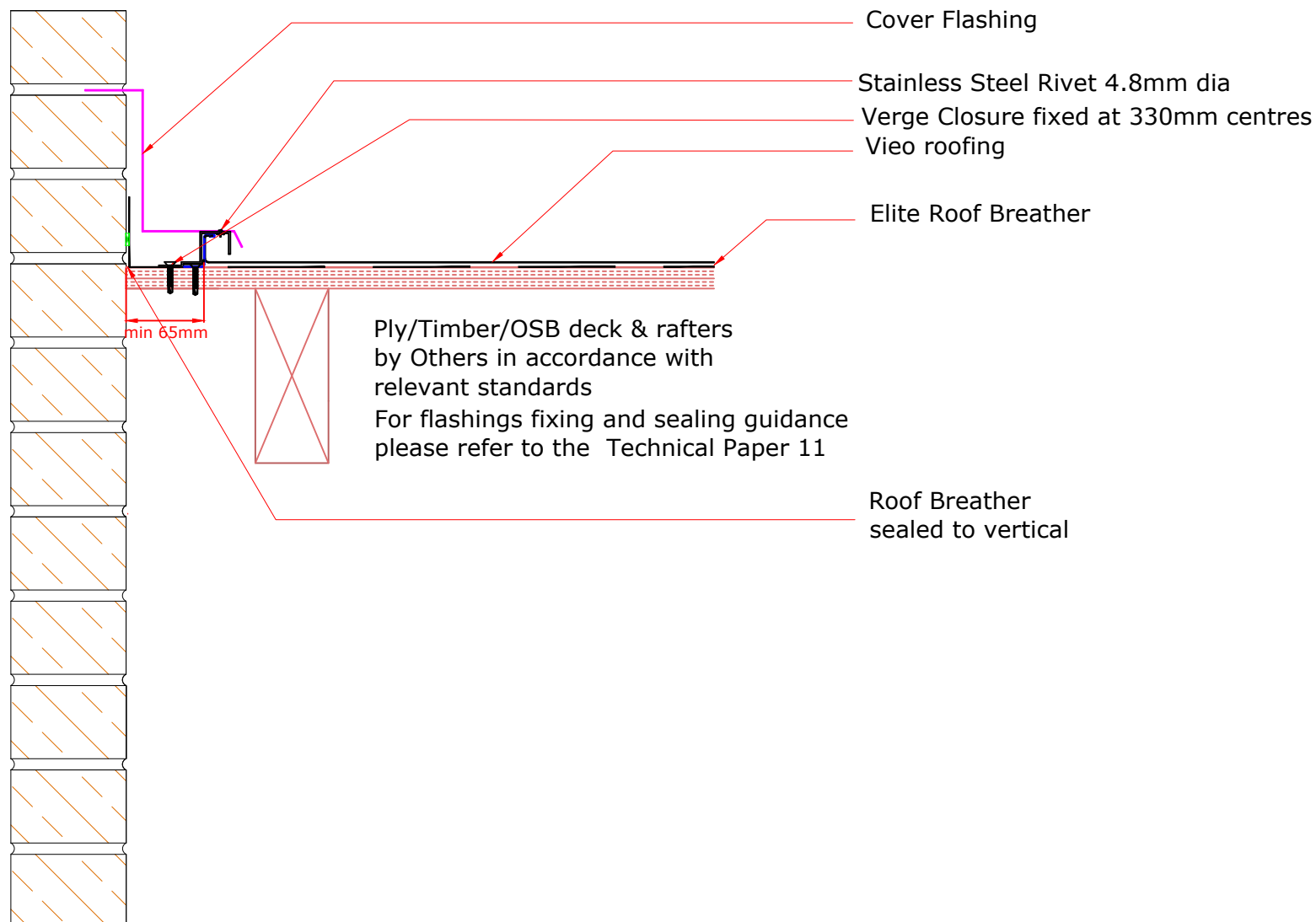
Elite Roof Breather

Vieo 0.7mm steel roofing

Ply/Timber/OSB deck & rafters
by Others in accordance with
relevant standards

For flashings fixing and sealing guidance
please refer to the Technical Paper 11







TITLE: Vieo Cold Roof (On Ply, OSB or Timber Deck)

DWG NO: V1_CR_TD_System

SCALE: NTS

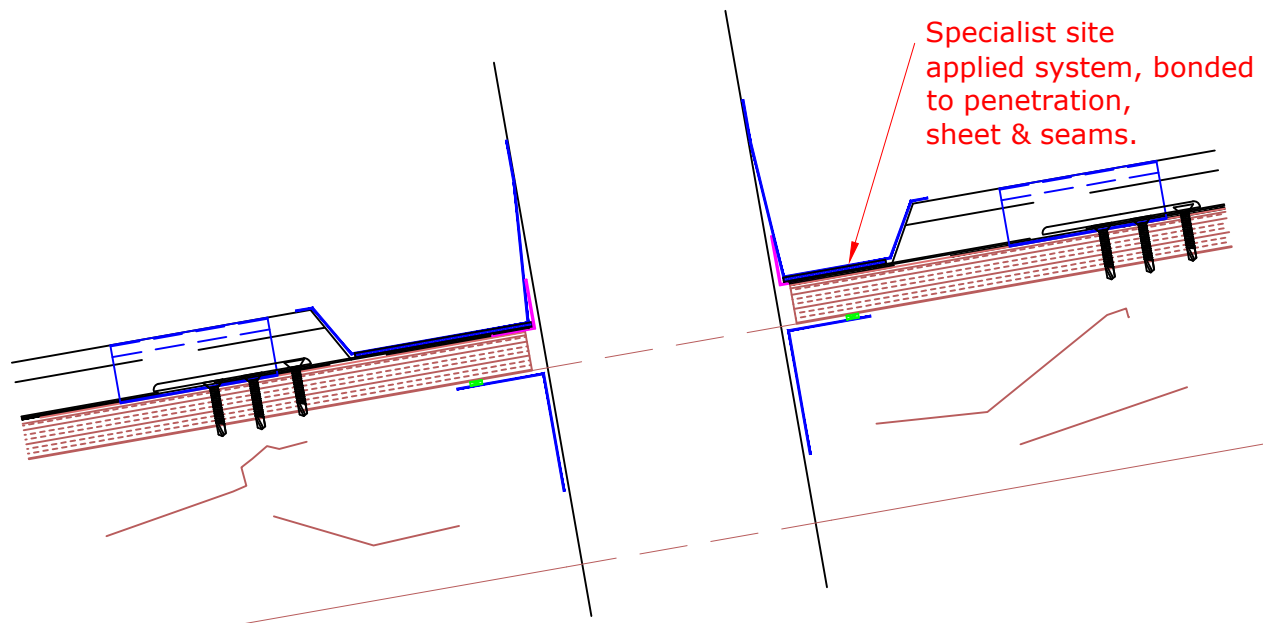
ISSUE DATE: Feb 2019

Drawn by: CD Checked by: MP

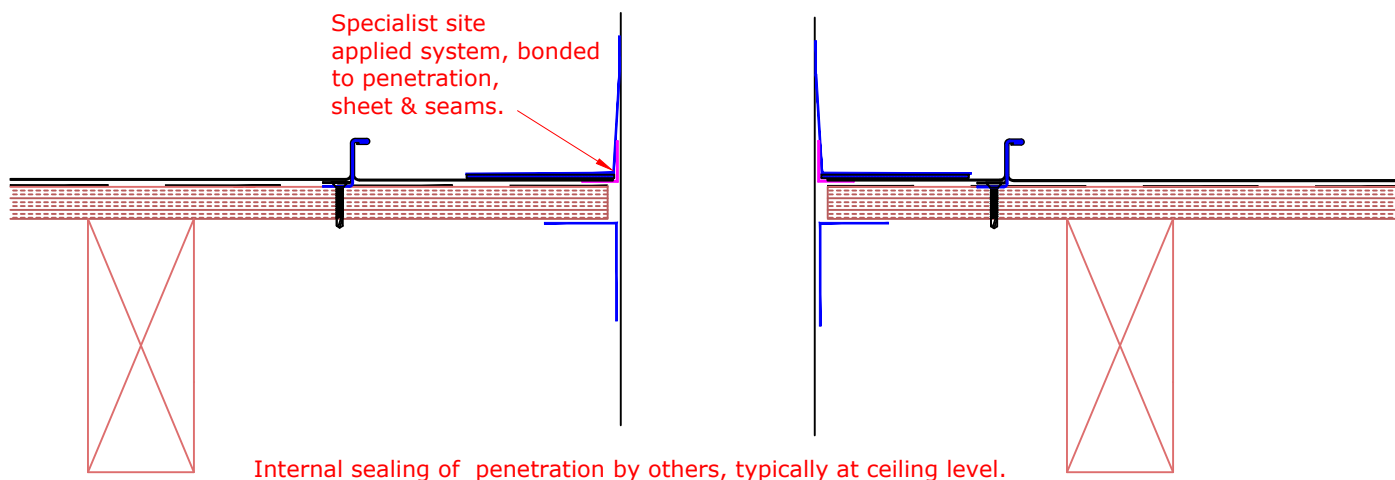
(To be read in conjunction with Vieo system specification documents)

**Euroclad Group Ltd,
Wentloog Corporate Park,
Wentloog Road, Cardiff CF3 2ER
Tel: +44 (0)2922 010101
Fax: +44 (0)2922 010122
Website: www.vieorooft.com**

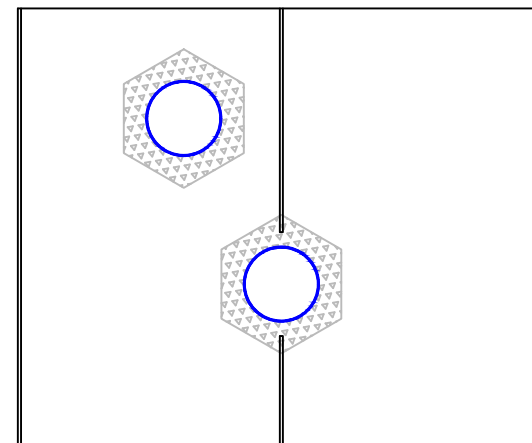
This draft drawing has been supplied by Euro Clad Ltd for the purpose of guidance free of charge. It is a suggested typical detail and as such should not be assumed suitable for any specific project or application. No responsibility is assumed for errors or misinterpretations resulting from the information contained in the drawing. Details are for illustration only and no liability is accepted. We reserve the right to change the details without notice. The drawing is copyright, it remains our property.



Create fixed points at clips immediately above & below detail across whole of affected elevation. Ensure Clips are at least 100mm away from detail. Allow free movement of sheets elsewhere.



Internal sealing of penetration by others, typically at ceiling level.





TITLE: Vieo Cold Roof (On Ply, OSB or Timber Deck)

DWG NO: V1_CR_TD_System

SCALE: NTS

ISSUE DATE: Feb 2019

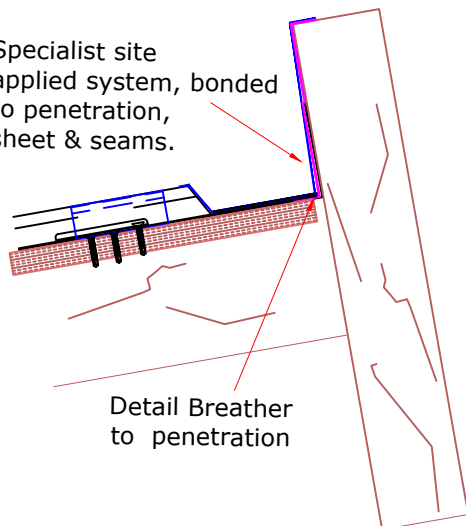
Drawn by: CD Checked by: MP

(To be read in conjunction with Vieo system specification documents)

**Euroclad Group Ltd,
Wentloog Corporate Park,
Wentloog Road, Cardiff CF3 2ER
Tel: +44 (0)2922 010101
Fax: +44 (0)2922 010122
Website: www.vieorooft.com**

This draft drawing has been supplied by Euro Clad Ltd for the purpose of guidance free of charge. It is a suggested typical detail and as such should not be assumed suitable for any specific project or application. No responsibility is assumed for errors or misinterpretations resulting from the information contained in the drawing. Details are for illustration only and no liability is accepted. We reserve the right to change the details without notice. The drawing is copyright, it remains our property.

Specialist site applied system, bonded to penetration, sheet & seams.

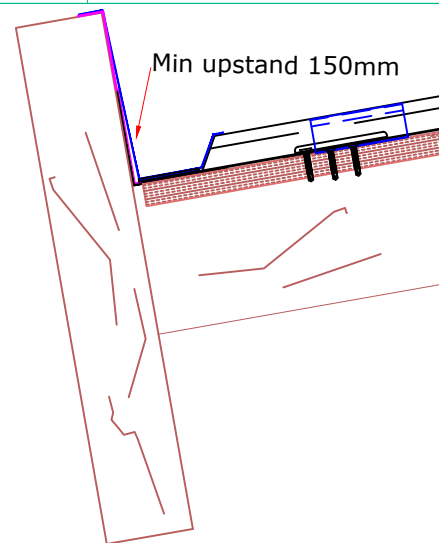


Detail Breather to penetration

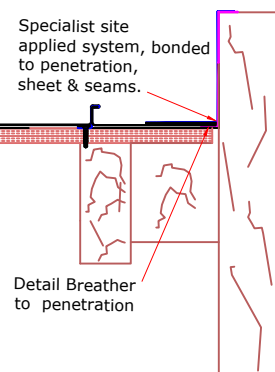
Create fixed points at clips immediately above & below detail across whole of affected elevation. Ensure Clips are at least 100mm away from detail. Allow free movement of sheets elsewhere.

Structural Kerb By Others. Height, size and angle adjustable. Can be used as a landing for details such as rooflight units & access hatches.

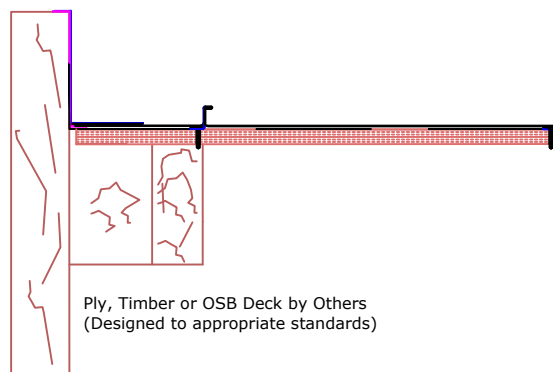
Min upstand 150mm



Specialist site applied system, bonded to penetration, sheet & seams.

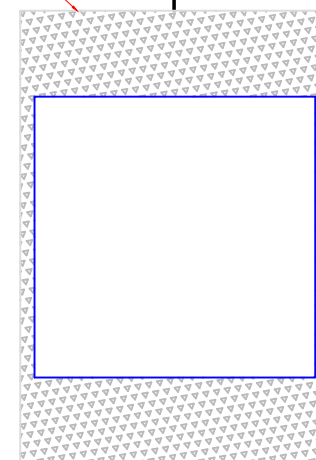


Detail Breather to penetration



Ply, Timber or OSB Deck by Others
(Designed to appropriate standards)

Specialist site applied system, bonded to penetration, sheet & seams. To provide adequate drainage around kerb upstands.





TITLE: Vieo Cold Roof (On Ply, OSB or Timber Deck)

DWG NO: V1_CR_TD_System

SCALE: NTS

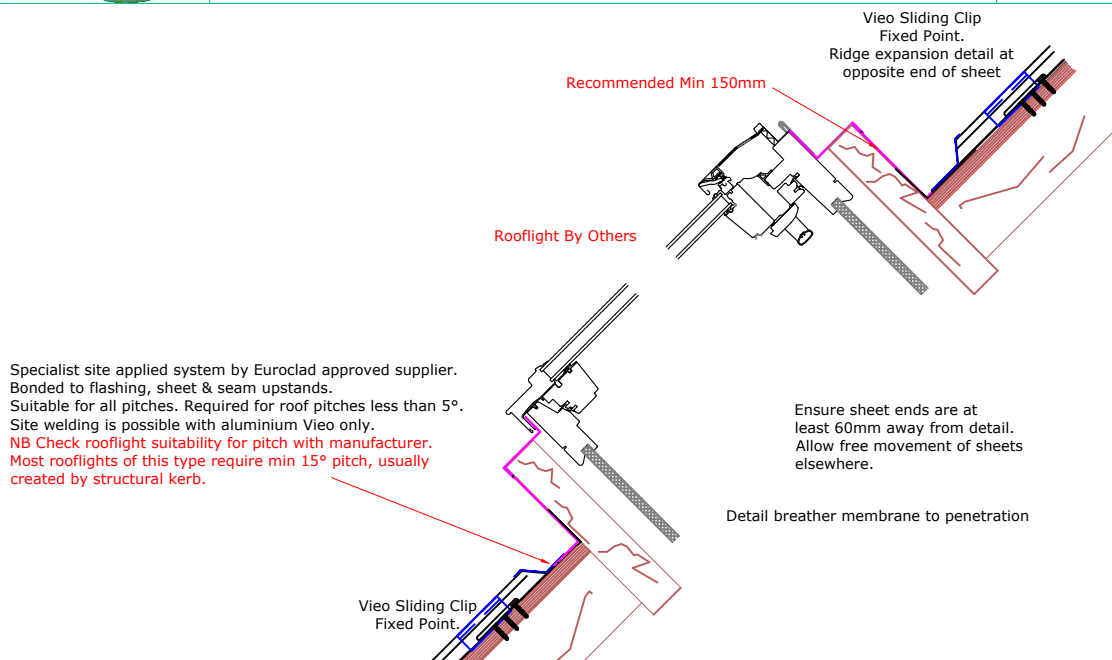
ISSUE DATE: Feb 2019

Drawn by: CD Checked by: MP

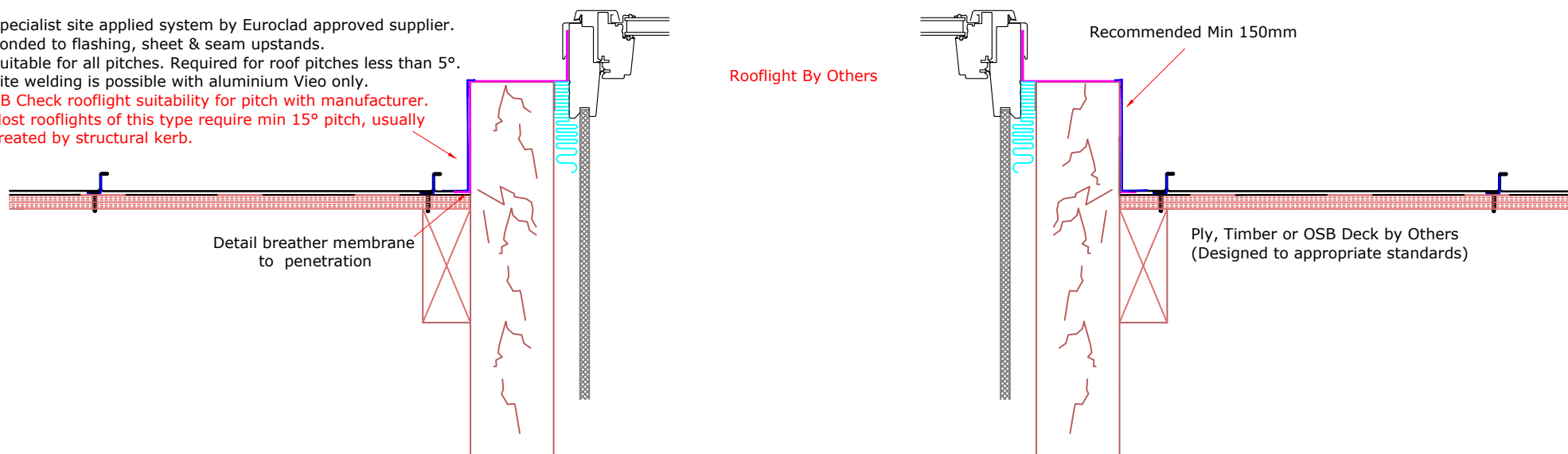
(To be read in conjunction with Vieo system specification documents)

**Euroclad Group Ltd,
Wentloog Corporate Park,
Wentloog Road, Cardiff CF3 2ER
Tel: +44 (0)2922 010101
Fax: +44 (0)2922 010122
Website: www.vieorooft.com**

This draft drawing has been supplied by Euro Clad Ltd for the purpose of guidance free of charge. It is a suggested typical detail and as such should not be assumed suitable for any specific project or application. No responsibility is assumed for errors or misinterpretations resulting from the information contained in the drawing. Details are for illustration only and no liability is accepted. We reserve the right to change the details without notice. The drawing is copyright, it remains our property.



Specialist site applied system by Euroclad approved supplier.
Bonded to flashing, sheet & seam upstands.
Suitable for all pitches. Required for roof pitches less than 5°.
Site welding is possible with aluminium Vieo only.
NB Check rooflight suitability for pitch with manufacturer.
Most rooflights of this type require min 15° pitch, usually created by structural kerb.





TITLE: Vieo Cold Roof (On Ply, OSB or Timber Deck)

DWG NO: V1_CR_TD_System

SCALE: NTS

ISSUE DATE: Feb 2019

Drawn by: CD Checked by: MP

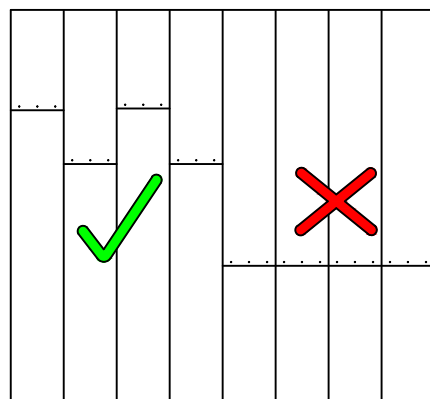
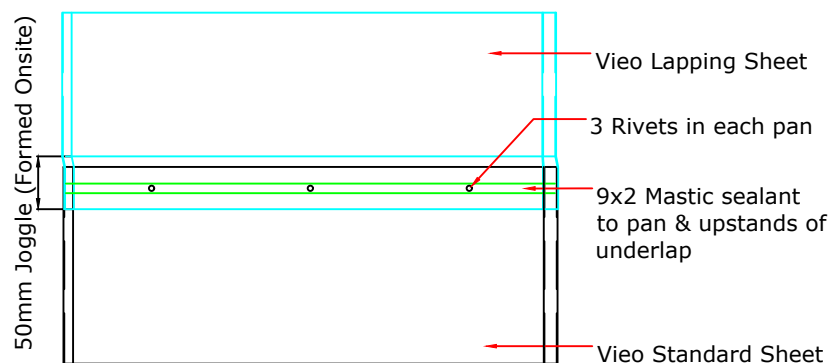
(To be read in conjunction with Vieo system specification documents)

**Euroclad Group Ltd,
Wentloog Corporate Park,
Wentloog Road, Cardiff CF3 2ER
Tel: +44 (0)2922 010101
Fax: +44 (0)2922 010122
Website: www.vieorooft.com**

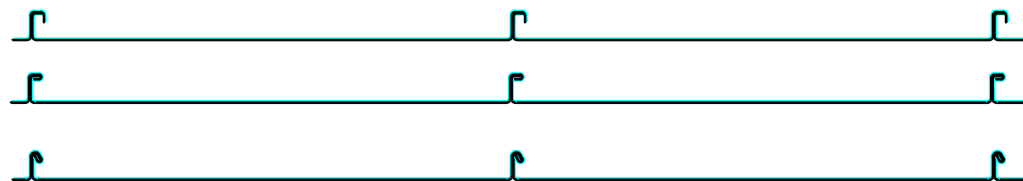
This draft drawing has been supplied by Euro Clad Ltd for the purpose of guidance free of charge. It is a suggested typical detail and as such should not be assumed suitable for any specific project or application. No responsibility is assumed for errors or misinterpretations resulting from the information contained in the drawing. Details are for illustration only and no liability is accepted. We reserve the right to change the details without notice. The drawing is copyright, it remains our property.

RIVET ENDLAP DETAIL ONLY SUITABLE FOR PITCHES $\geq 5^\circ$

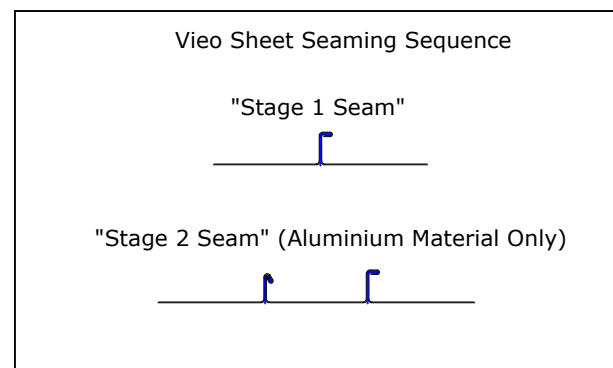
For advice on fixed point locations please contact Euroclad Technical



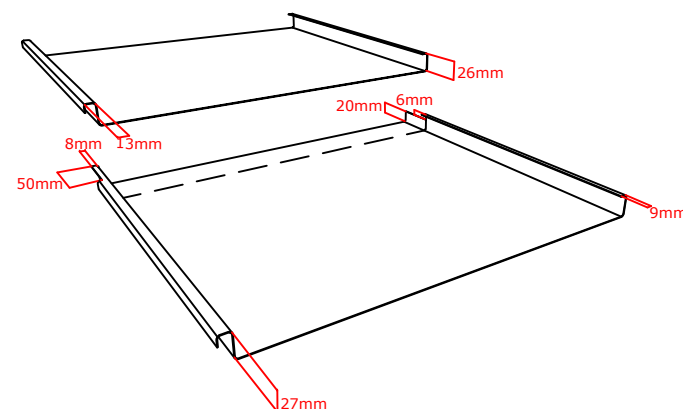
Lap joints must be staggered at least 100mm apart
Clips minimum 100mm from joint



SEAMING OPTIONS AT END LAP



Vieo Sheets cut on site prior to jointing





TITLE: Vieo Cold Roof (On Ply, OSB or Timber Deck)

DWG NO: V1_CR_TD_System

SCALE: NTS

ISSUE DATE: Feb 2019

Drawn by: CD Checked by: MP

(To be read in conjunction with Vieo system specification documents)

**Euroclad Group Ltd,
Wentloog Corporate Park,
Wentloog Road, Cardiff CF3 2ER
Tel: +44 (0)2922 010101
Fax: +44 (0)2922 010122
Website: www.vieorooft.com**

This draft drawing has been supplied by Euro Clad Ltd for the purpose of guidance free of charge. It is a suggested typical detail and as such should not be assumed suitable for any specific project or application. No responsibility is assumed for errors or misinterpretations resulting from the information contained in the drawing. Details are for illustration only and no liability is accepted. We reserve the right to change the details without notice. The drawing is copyright, it remains our property.

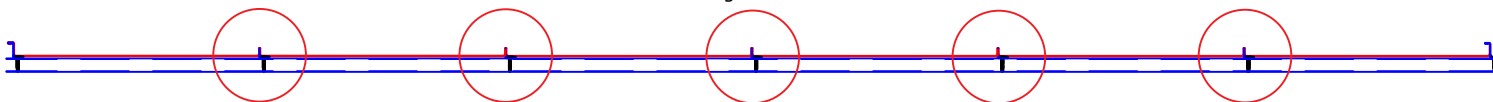
STEP 1

Damaged sheets in red



STEP 2

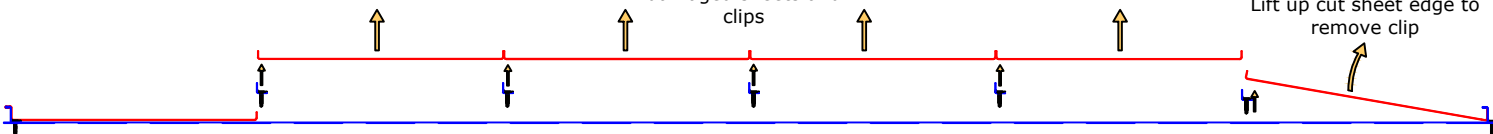
Cut off upstands of damaged sheets



STEP 3

Remove the central damaged sheets and clips

Lift up cut sheet edge to remove clip



STEP 4

Apply touch up paint to cut edge.

Apply an adhesive to bond the single upstand sheet to the damaged sheet.

Single upstand sheets

Lay down new sheets and clips.
Note: Clip Fixings to be offset from existing fixing holes

Apply an adhesive to bond the single upstand sheet to the damaged sheet.

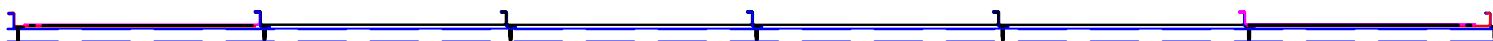
Apply touch up paint to cut edge.

Damaged sheet cut back from cut off upstand to provide a flat bonding surface.

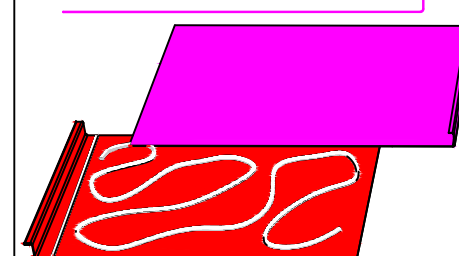
Damaged sheet cut back from cut off upstand to provide a flat bonding surface.

STEP 5

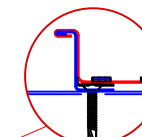
New sheets in place



Single upstand sheet should be manufactured narrower than what was originally ordered to allow for creep of new sheets.



Continuous run of adhesive set back by 10-15mm from sheet edge to be of consistent bead size.



Pressure should be applied to achieve a bond and seal along sheet length. Use sealed rivets if necessary.