



**TITLE: Vieo Warm Roof (On Ply, OSB or Timber Deck)**

**DWG NO: V2\_WR\_TD\_System**

**SCALE: NTS**

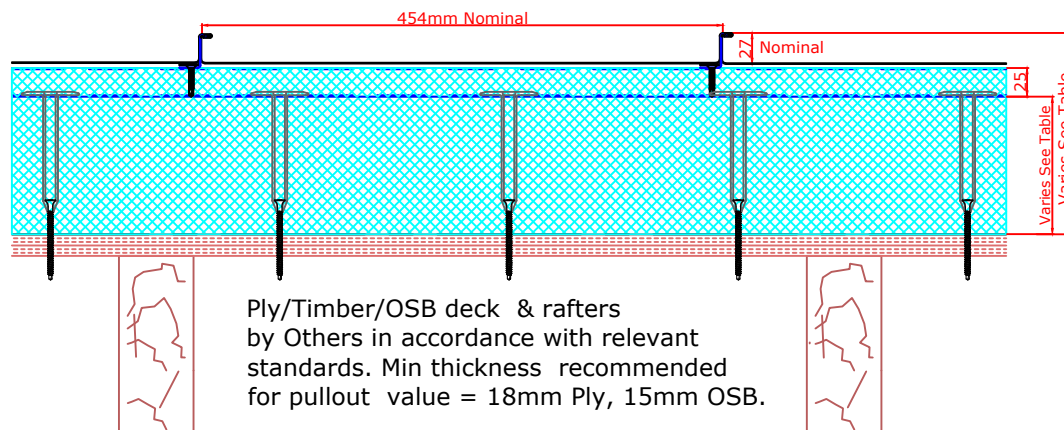
**ISSUE DATE: Feb 2019**

Drawn by: MP Checked by: PCI

(To be read in conjunction with Vieo system specification documents)

**Euroclad Group Ltd,  
Wentloog Corporate Park,  
Wentloog Road, Cardiff CF3 2ER  
Tel: +44 (0)2922 010101  
Fax: +44 (0)2922 010122  
Website: [www.vieorooft.com](http://www.vieorooft.com)**

This draft drawing has been supplied by Euro Clad Ltd for the purpose of guidance free of charge. It is a suggested typical detail and as such should not be assumed suitable for any specific project or application. No responsibility is assumed for errors or misinterpretations resulting from the information contained in the drawing. Details are for illustration only and no liability is accepted. We reserve the right to change the details without notice. The drawing is copyright, it remains our property.



<b>U Value</b>	<b>0.25</b>	<b>0.20</b>	<b>0.18</b>	<b>0.15</b>
<b>Insulation Depth</b> (Excluding 25mm upper slab)	115mm	150mm	170mm	205mm
<b>Overall System Depth</b> (Excluding Timber Substrate)	169mm	204mm	224mm	259mm
<b>System Weight / M<sup>2</sup></b> <b>Steel</b> 0.7mm (Excluding Timber Substrate)	23.28 kg/m <sup>2</sup>	24.90 kg/m <sup>2</sup>	27.00 kg/m <sup>2</sup>	30.68 kg/m <sup>2</sup>
<b>System Weight / M<sup>2</sup></b> <b>Aluminium</b> 0.9mm (Excluding Timber Substrate)	17.74 kg/m <sup>2</sup>	21.41 kg/m <sup>2</sup>	23.51 kg/m <sup>2</sup>	27.19 kg/m <sup>2</sup>

<b>U Value (RocSlab Lite)</b>	<b>0.25</b>	<b>0.17</b>	<b>0.15</b>	<b>0.13</b>	<b>0.11</b>
<b>Insulation Depth</b> (Excluding 25mm upper slab)	90mm	130mm	150mm	180mm	200mm
<b>Overall System Depth</b> (Excluding Timber Substrate)	144mm	184mm	204mm	234mm	254mm
<b>System Weight / M<sup>2</sup></b> <b>Steel</b> 0.7mm (Excluding Timber Substrate)	18.96 kg/m <sup>2</sup>	20.24 kg/m <sup>2</sup>	20.88 kg/m <sup>2</sup>	21.84 kg/m <sup>2</sup>	22.48 kg/m <sup>2</sup>
<b>System Weight / M<sup>2</sup></b> <b>Aluminium</b> 0.9mm (Excluding Timber Substrate)	15.47 kg/m <sup>2</sup>	16.75 kg/m <sup>2</sup>	17.39 kg/m <sup>2</sup>	18.35 kg/m <sup>2</sup>	18.99 kg/m <sup>2</sup>

RocSlab Lite is a combination of PIR and Rock Fibre insulation



**TITLE: Vieo Warm Roof (On Ply, OSB or Timber Deck)**

**DWG NO: V2\_WR\_TD\_System**

**SCALE: NTS**

**ISSUE DATE: Feb 2019**

Drawn by: MP Checked by: PCI

(To be read in conjunction with Vieo system specification documents)

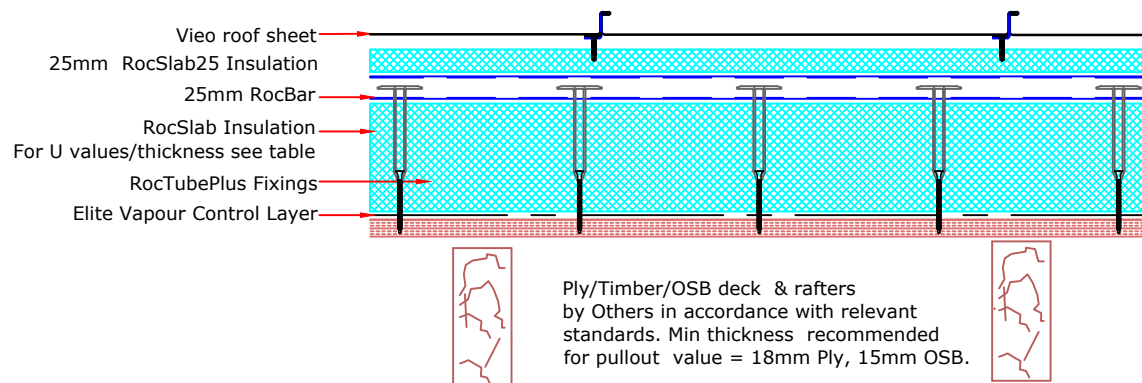
**Euroclad Group Ltd,  
Wentloog Corporate Park,  
Wentloog Road, Cardiff CF3 2ER  
Tel: +44 (0)2922 010101  
Fax: +44 (0)2922 010122  
Website: [www.vieorooft.com](http://www.vieorooft.com)**

This draft drawing has been supplied by Euro Clad Ltd for the purpose of guidance free of charge. It is a suggested typical detail and as such should not be assumed suitable for any specific project or application. No responsibility is assumed for errors or misinterpretations resulting from the information contained in the drawing. Details are for illustration only and no liability is accepted. We reserve the right to change the details without notice. The drawing is copyright, it remains our property.

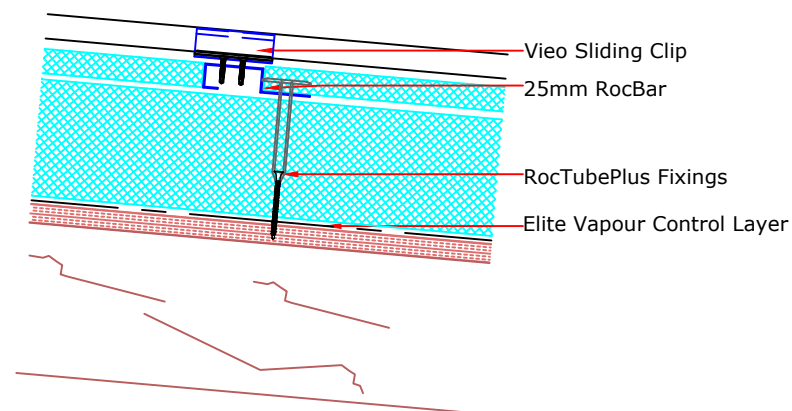
**Please Note:**

WT75 Self Adhesive Barrier Tape must be used on Rocbar when aluminium Vieo is being used.

UPSLOPE SECTION



THROUGH SECTION



Vieo Sheet Seaming Sequence

"Stage 1 Seam"



"Stage 2 Seam" (Aluminium Material Only)





**TITLE: Vieo Warm Roof (On Ply, OSB or Timber Deck)**

**DWG NO: V2\_WR\_TD\_System**

**SCALE: NTS**

**ISSUE DATE: Feb 2019**

Drawn by: MP Checked by: PCI

(To be read in conjunction with Vieo system specification documents)

**Euroclad Group Ltd,  
Wentloog Corporate Park,  
Wentloog Road, Cardiff CF3 2ER  
Tel: +44 (0)2922 010101  
Fax: +44 (0)2922 010122  
Website: [www.vieoroof.com](http://www.vieoroof.com)**

This draft drawing has been supplied by Euro Clad Ltd for the purpose of guidance free of charge. It is a suggested typical detail and as such should not be assumed suitable for any specific project or application. No responsibility is assumed for errors or misinterpretations resulting from the information contained in the drawing. Details are for illustration only and no liability is accepted. We reserve the right to change the details without notice. The drawing is copyright, it remains our property.

**Typical arrangement: 1260mm in central areas, reduced clip centres at ridge eaves and perimeters and in high load areas.  
Check system capacity against project loads and adjust if necessary**

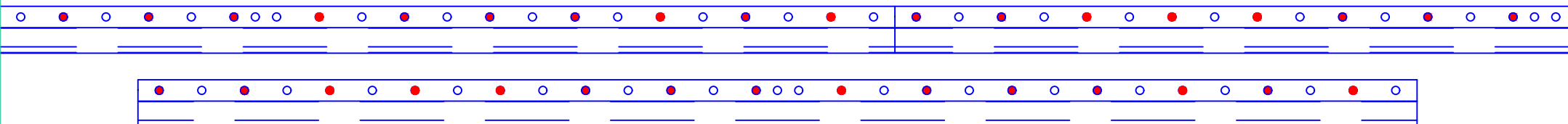
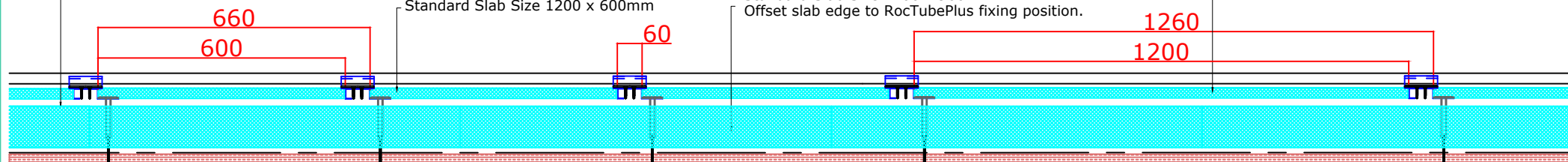
**Maximum clip centres:  
Determined by project wind suction loads as follows:  
1260mm for loads up to 1.5kN/m<sup>2</sup>  
660mm for loads 1.5 to 2.0kN/m<sup>2</sup>  
300mm for loads 2.0 to 4.0kN/m<sup>2</sup>  
Where substrate is min 18mm Ply or min 15mm OSB 3**

Ensure Slab insulation is present to support sheet ends and Rocbar base.

Standard Slab Size 1200 x 600mm

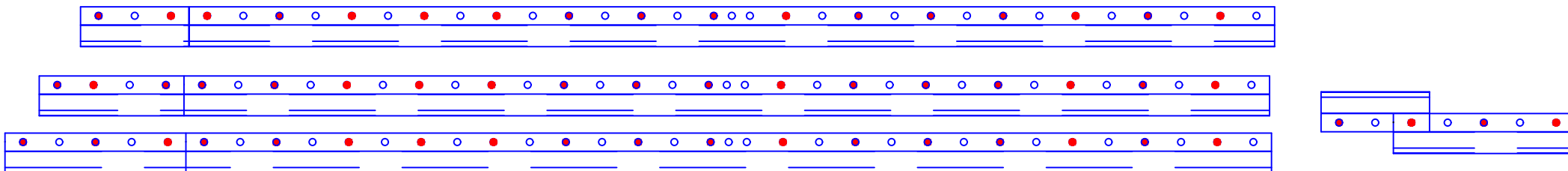
Standard Slab Size 1200 x 900mm  
Offset slab edge to RocTubePlus fixing position.

Standard Slab Size 1200 x 600mm



**STANDARD FIXINGS PATTERN: AT MAXIMUM 200mm CENTRES (15 FIXINGS PER 3M ROCBAR)**

**WHERE OFFCUTS ARE USED:  
A MINIMUM HOLE TO CUT EDGE DISTANCE OF 50MM IS REQUIRED.  
MAXIMUM 200MM FIXING CENTRES MUST BE MAINTAINED & EACH OFFCUT MUST HAVE A FIXING IN EACH END HOLE.  
THE MINIMUM OFFCUT ALLOWABLE IS 300mm LONG WITH A FIXING IN EACH END.  
IF A SHORTER LENGTH THEN 300mm IS REQUIRED, ROTATE THE RAIL AND LAP BACK.**





**TITLE: Vieo Warm Roof (On Ply, OSB or Timber Deck)**

**DWG NO: V2\_WR\_TD\_System**

**SCALE: NTS**

**ISSUE DATE: Feb 2019**

Drawn by: MP Checked by: PCI

(To be read in conjunction with Vieo system specification documents)

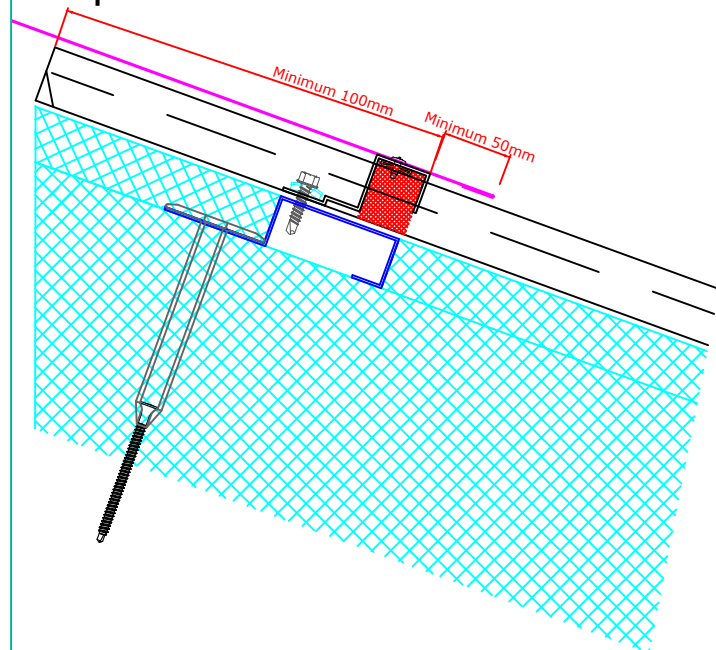
**Euroclad Group Ltd,  
Wentloog Corporate Park,  
Wentloog Road, Cardiff CF3 2ER  
Tel: +44 (0)2922 010101  
Fax: +44 (0)2922 010122  
Website: [www.vieorooft.com](http://www.vieorooft.com)**

This draft drawing has been supplied by Euro Clad Ltd for the purpose of guidance free of charge. It is a suggested typical detail and as such should not be assumed suitable for any specific project or application. No responsibility is assumed for errors or misinterpretations resulting from the information contained in the drawing. Details are for illustration only and no liability is accepted. We reserve the right to change the details without notice. The drawing is copyright, it remains our property.

## **Standard Fixed Point at Ridge.**

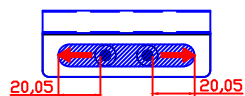
**(covered by flashing).**

Fixed through closure & sheet to RocBar.  
Allow for clip travel prior to creating fixed point.



Clip travel

Assembled Plan View

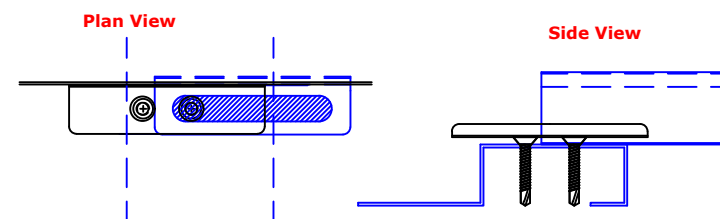


Assembled Side View



## **Alternative for use elsewhere on slope:**

Create Fixed Point by offsetting base part of clip and fixing either side



Take note of anticipated direction of travel when laying out sheets & fixing.



**TITLE: Vieo Warm Roof (On Ply, OSB or Timber Deck)**

**DWG NO: V2\_WR\_TD\_System**

**SCALE: NTS**

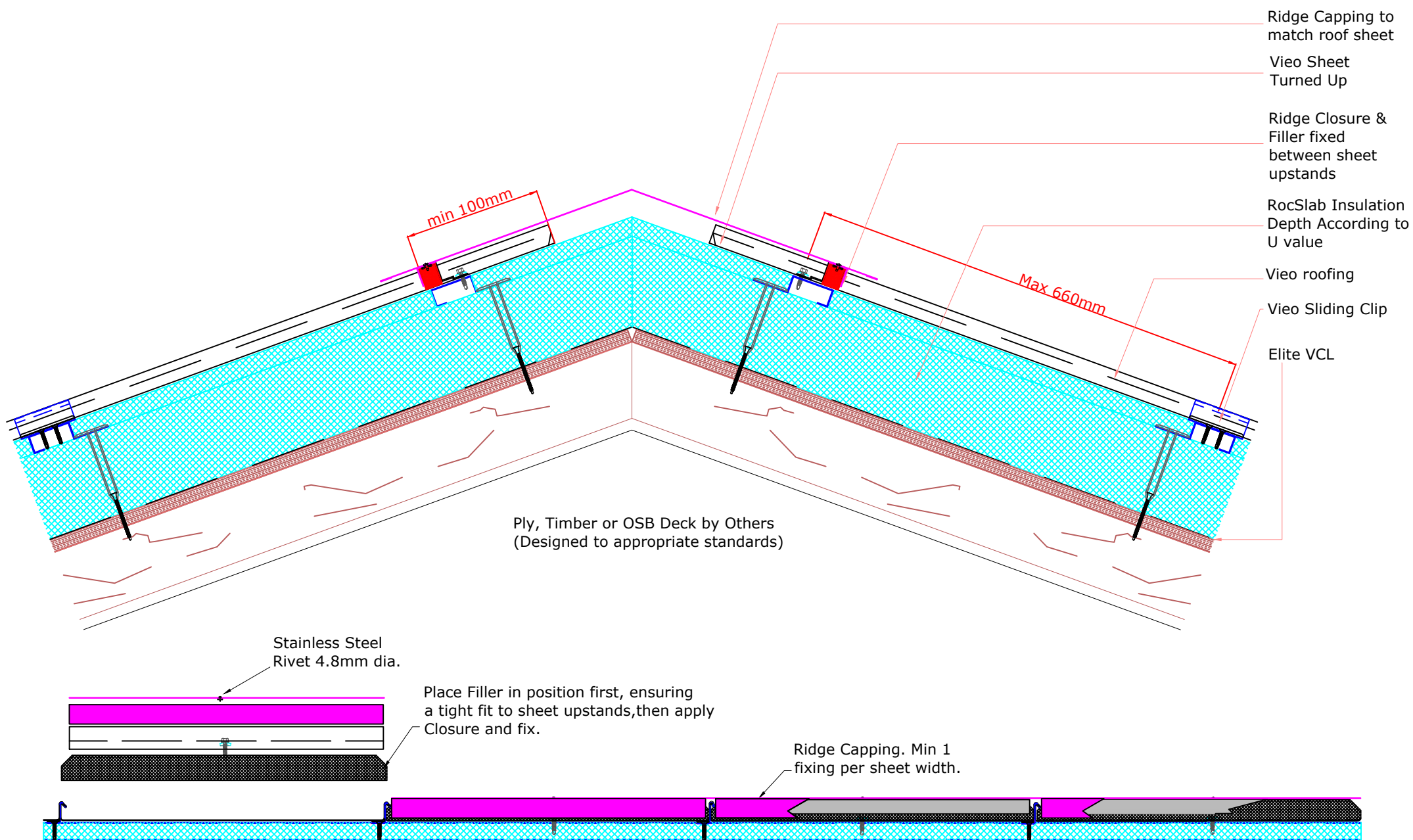
**ISSUE DATE: Feb 2019**

Drawn by: MP Checked by: PCI

(To be read in conjunction with Vieo system specification documents)

**Euroclad Group Ltd,  
Wentloog Corporate Park,  
Wentloog Road, Cardiff CF3 2ER  
Tel: +44 (0)2922 010101  
Fax: +44 (0)2922 010122  
Website: [www.vieorooft.com](http://www.vieorooft.com)**

This draft drawing has been supplied by Euro Clad Ltd for the purpose of guidance free of charge. It is a suggested typical detail and as such should not be assumed suitable for any specific project or application. No responsibility is assumed for errors or misinterpretations resulting from the information contained in the drawing. Details are for illustration only and no liability is accepted. We reserve the right to change the details without notice. The drawing is copyright, it remains our property.





**TITLE: Vieo Warm Roof (On Ply, OSB or Timber Deck)**

**DWG NO: V2\_WR\_TD\_System**

**SCALE: NTS**

**ISSUE DATE: Feb 2019**

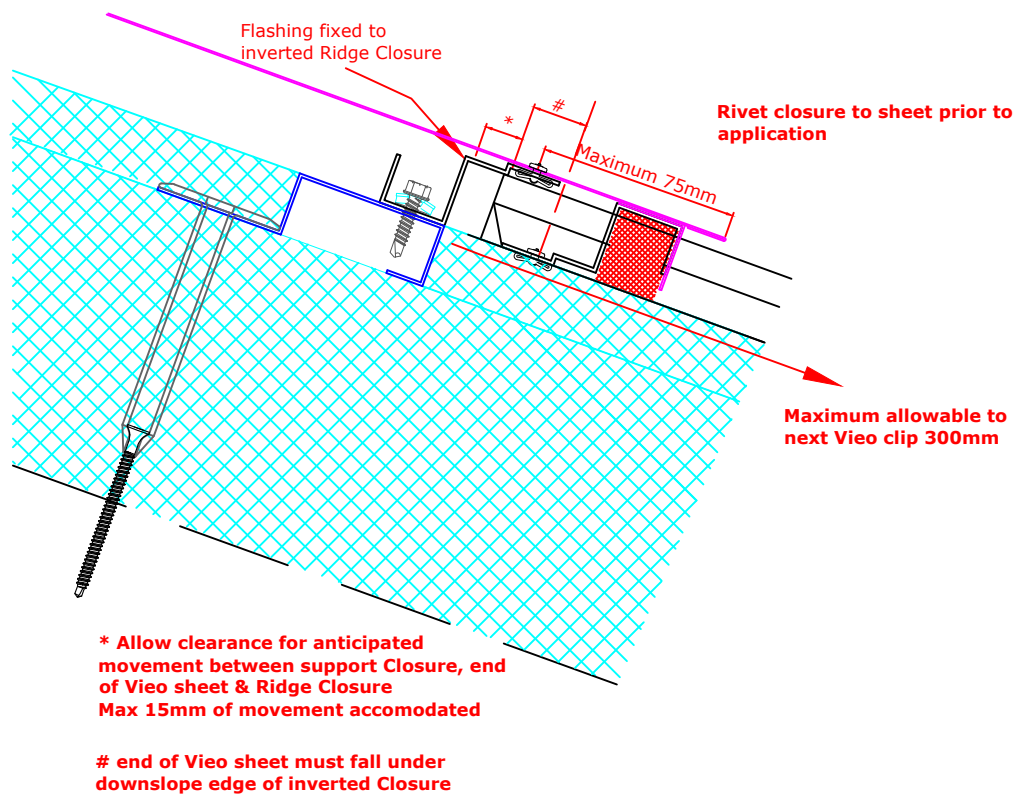
Drawn by: MP Checked by: PCI

(To be read in conjunction with Vieo system specification documents)

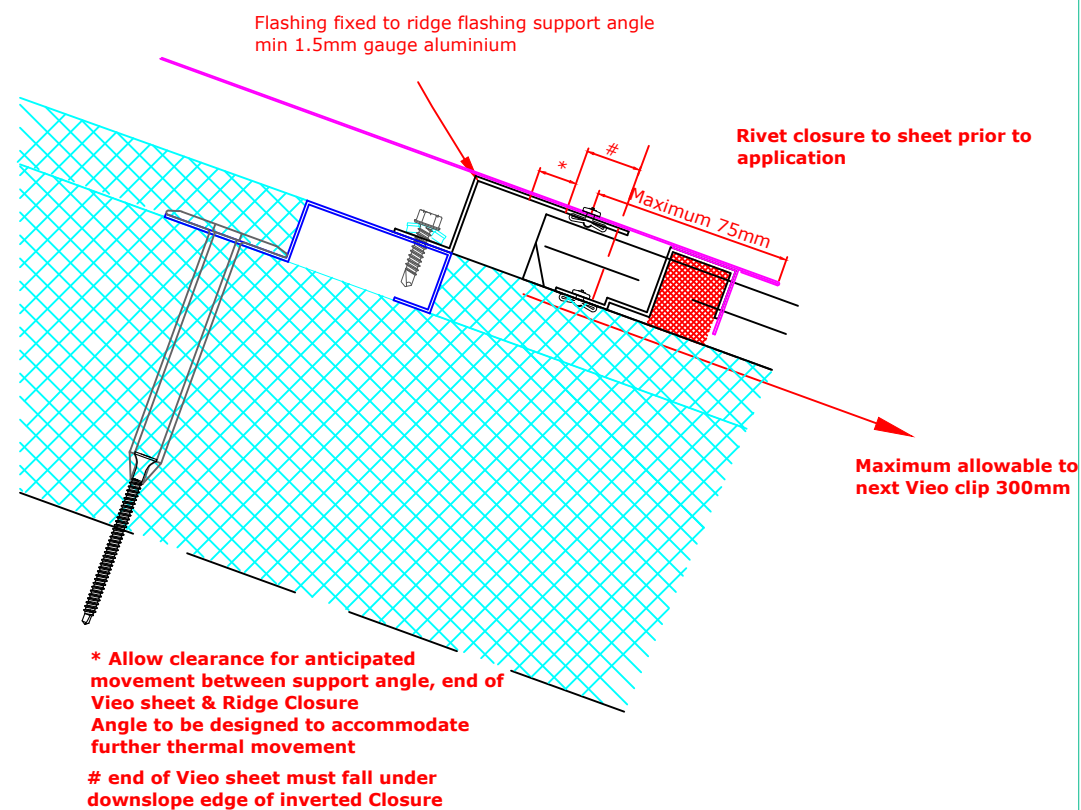
**Euroclad Group Ltd,  
Wentloog Corporate Park,  
Wentloog Road, Cardiff CF3 2ER  
Tel: +44 (0)2922 010101  
Fax: +44 (0)2922 010122  
Website: [www.vieorooft.com](http://www.vieorooft.com)**

This draft drawing has been supplied by Euro Clad Ltd for the purpose of guidance free of charge. It is a suggested typical detail and as such should not be assumed suitable for any specific project or application. No responsibility is assumed for errors or misinterpretations resulting from the information contained in the drawing. Details are for illustration only and no liability is accepted. We reserve the right to change the details without notice. The drawing is copyright, it remains our property.

**Ridge Expansion Detail**  
**(for use when fixed point**  
**is not created at ridge).**



**Ridge Expansion Detail**  
**(for use when fixed point**  
**is not created at ridge).**







**TITLE: Vieo Warm Roof (On Ply, OSB or Timber Deck)**

**DWG NO: V2\_WR\_TD\_System**

**SCALE: NTS**

**ISSUE DATE: Feb 2019**

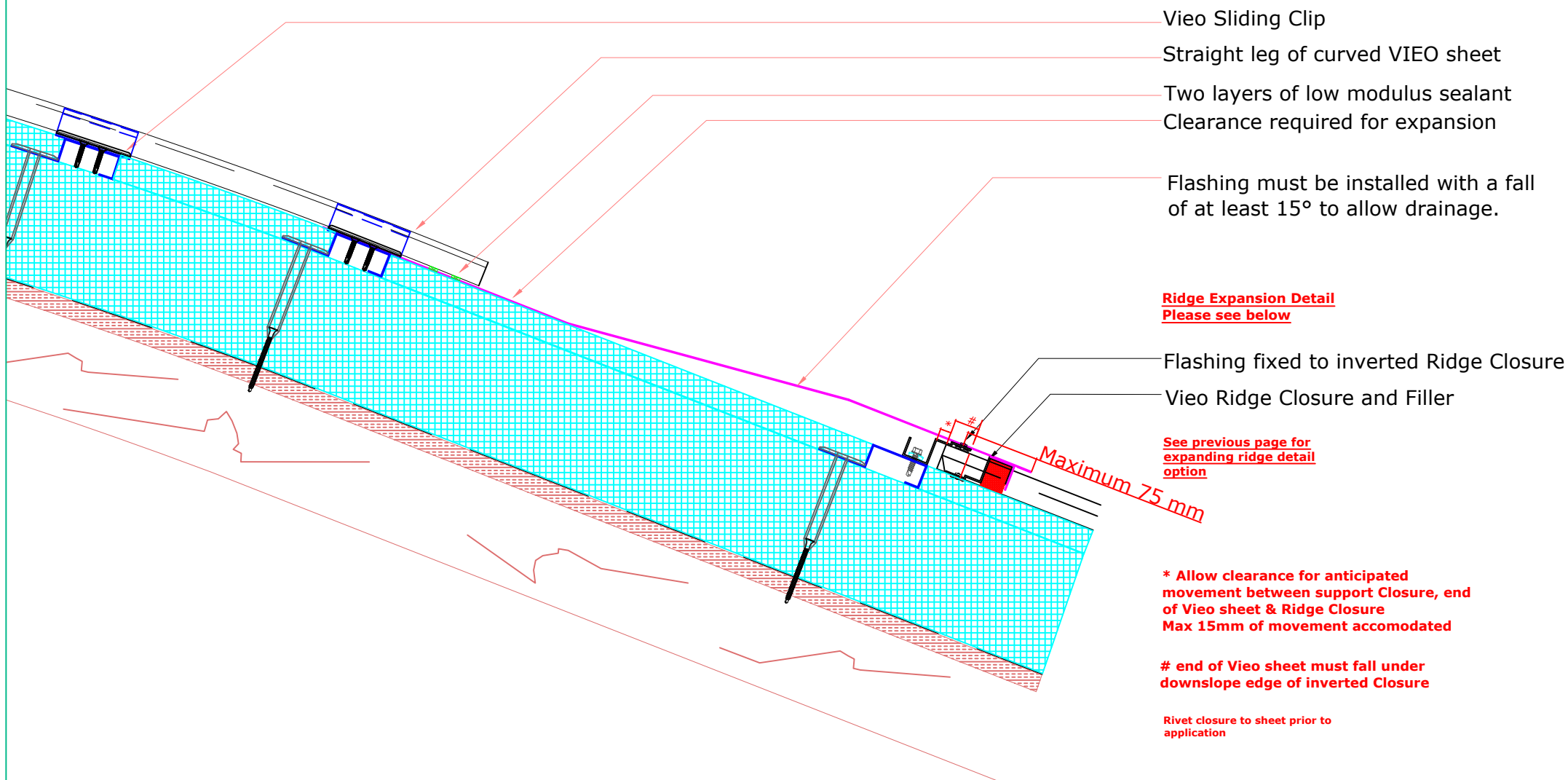
Drawn by: MP Checked by: PCI

(To be read in conjunction with Vieo system specification documents)

**Euroclad Group Ltd,  
Wentloog Corporate Park,  
Wentloog Road, Cardiff CF3 2ER  
Tel: +44 (0)2922 010101  
Fax: +44 (0)2922 010122  
Website: [www.vieorooft.com](http://www.vieorooft.com)**

This draft drawing has been supplied by Euro Clad Ltd for the purpose of guidance free of charge. It is a suggested typical detail and as such should not be assumed suitable for any specific project or application. No responsibility is assumed for errors or misinterpretations resulting from the information contained in the drawing. Details are for illustration only and no liability is accepted. We reserve the right to change the details without notice. The drawing is copyright, it remains our property.

Suitable for pitches of  $\geq 15^\circ$





**TITLE: Vieo Warm Roof (On Ply, OSB or Timber Deck)**

**DWG NO: V2\_WR\_TD\_System**

**SCALE: NTS**

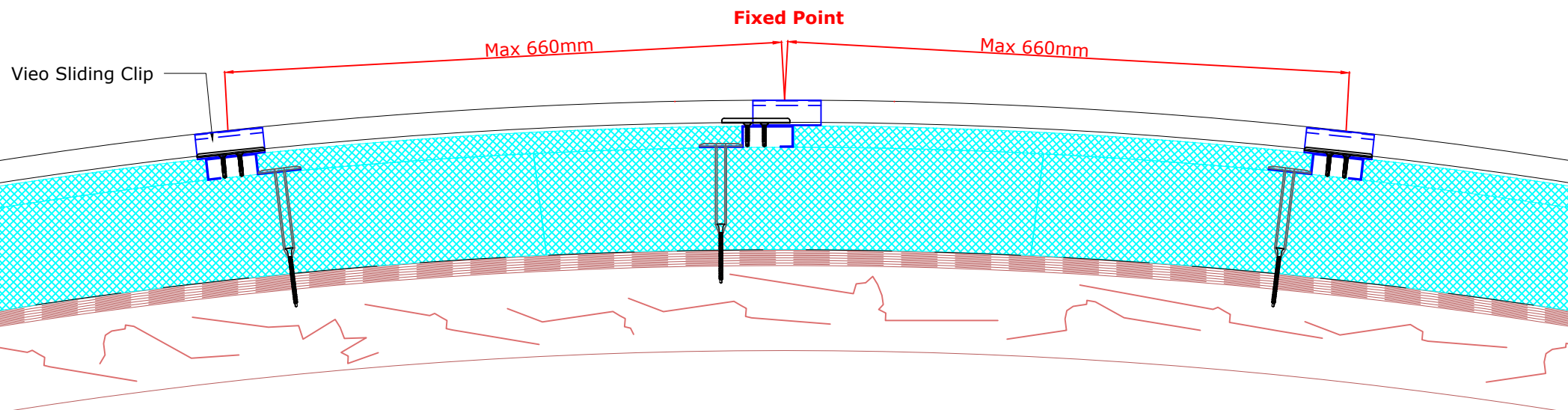
**ISSUE DATE: Feb 2019**

Drawn by: MP Checked by: PCI

(To be read in conjunction with Vieo system specification documents)

**Euroclad Group Ltd,  
Wentloog Corporate Park,  
Wentloog Road, Cardiff CF3 2ER  
Tel: +44 (0)2922 010101  
Fax: +44 (0)2922 010122  
Website: [www.vieorooft.com](http://www.vieorooft.com)**

This draft drawing has been supplied by Euro Clad Ltd for the purpose of guidance free of charge. It is a suggested typical detail and as such should not be assumed suitable for any specific project or application. No responsibility is assumed for errors or misinterpretations resulting from the information contained in the drawing. Details are for illustration only and no liability is accepted. We reserve the right to change the details without notice. The drawing is copyright, it remains our property.



Below 50M radius RocSlab needs to be partially sawn through from bottom to around 50mm from top of slab to allow it to follow curves. (Below 50M radius when using 600mm wide slab). When cutting vee grooves in small radii ensure that these are cut to minimum width to ensure continuity of insulation.





**TITLE: Vieo Warm Roof (On Ply, OSB or Timber Deck)**

**DWG NO: V2\_WR\_TD\_System**

**SCALE: NTS**

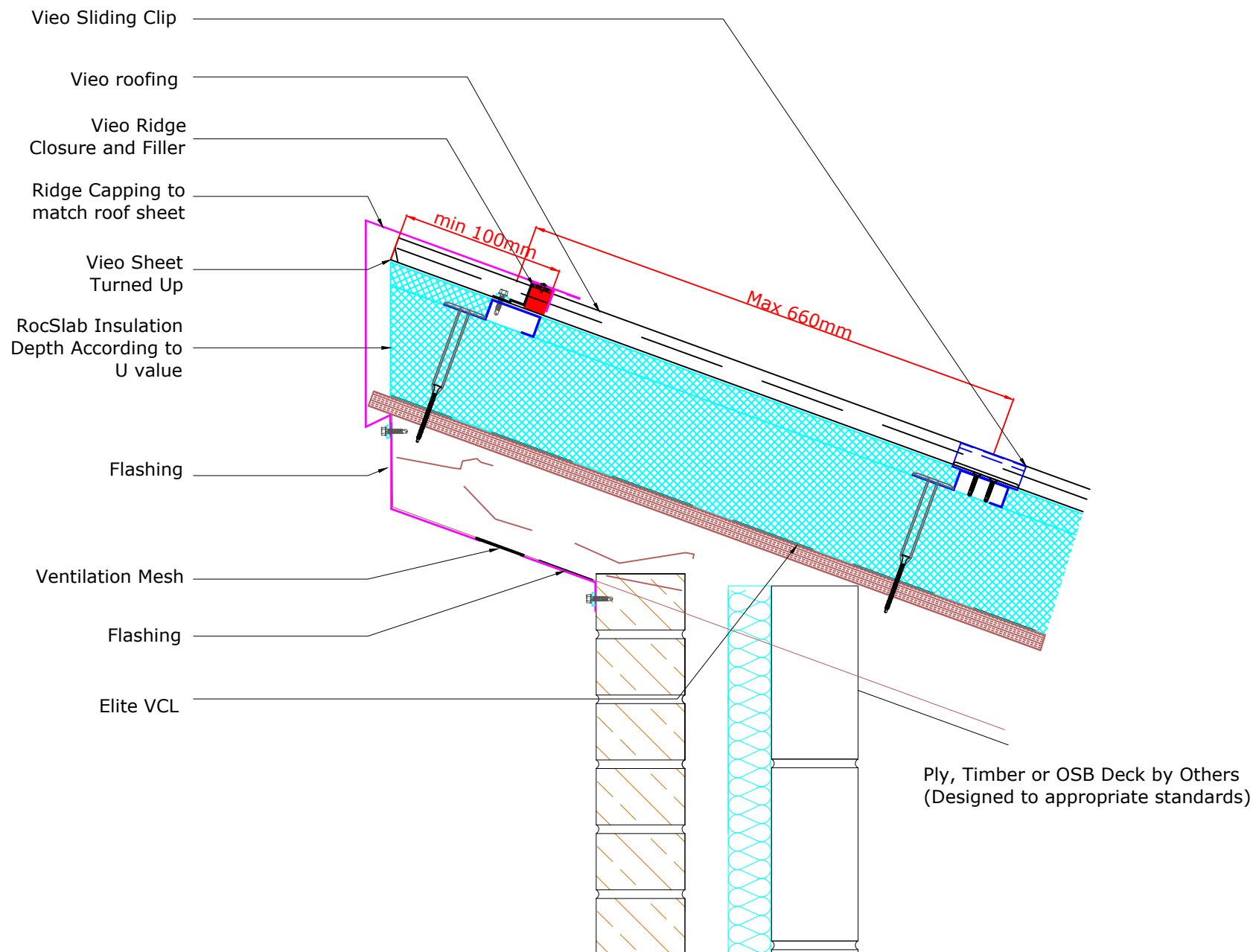
**ISSUE DATE: Feb 2019**

Drawn by: MP Checked by: PCI

(To be read in conjunction with Vieo system specification documents)

**Euroclad Group Ltd,  
Wentloog Corporate Park,  
Wentloog Road, Cardiff CF3 2ER  
Tel: +44 (0)2922 010101  
Fax: +44 (0)2922 010122  
Website: [www.vieorooft.com](http://www.vieorooft.com)**

This draft drawing has been supplied by Euro Clad Ltd for the purpose of guidance free of charge. It is a suggested typical detail and as such should not be assumed suitable for any specific project or application. No responsibility is assumed for errors or misinterpretations resulting from the information contained in the drawing. Details are for illustration only and no liability is accepted. We reserve the right to change the details without notice. The drawing is copyright, it remains our property.





**TITLE: Vieo Warm Roof (On Ply, OSB or Timber Deck)**

**DWG NO: V2\_WR\_TD\_System**

**SCALE: NTS**

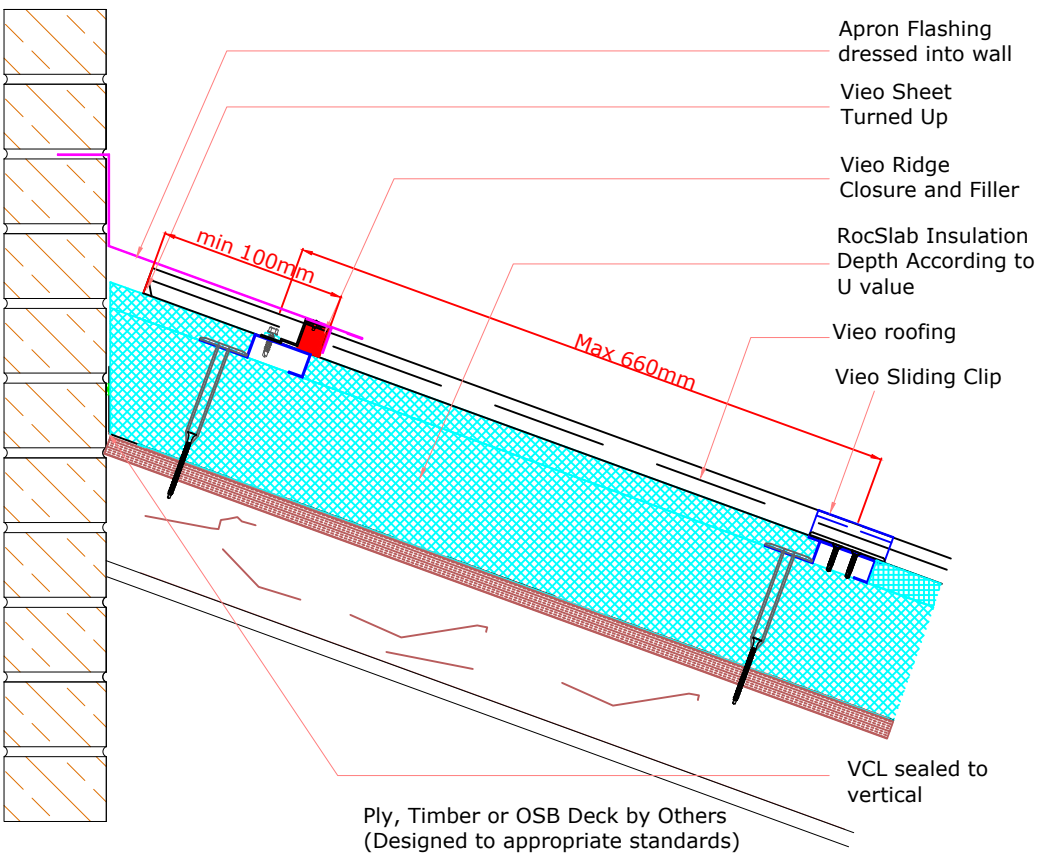
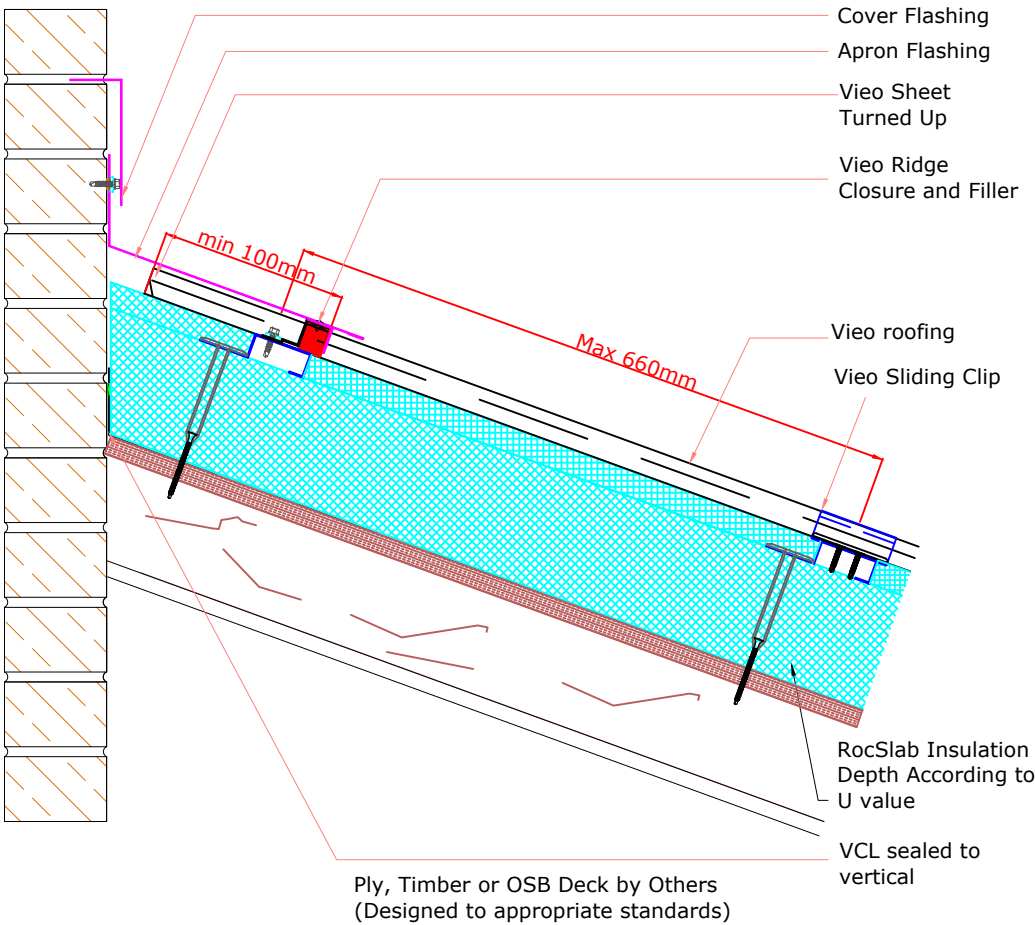
**ISSUE DATE: Feb 2019**

Drawn by: MP Checked by: PCI

(To be read in conjunction with Vieo system specification documents)

**Euroclad Group Ltd,  
Wentloog Corporate Park,  
Wentloog Road, Cardiff CF3 2ER  
Tel: +44 (0)2922 010101  
Fax: +44 (0)2922 010122  
Website: [www.vieoroof.com](http://www.vieoroof.com)**

This drawing has been supplied by Euroclad Ltd for the purpose of guidance free of charge. It is a suggested typical detail and as such should not be assumed suitable for any specific project or application. No responsibility is assumed for errors or misinterpretations resulting from the information contained in the drawing. Details are for illustration only and no liability is accepted. We reserve the right to change the details without notice. The drawing is copyright, it remains our property.





**TITLE: Vieo Warm Roof (On Ply, OSB or Timber Deck)**

**DWG NO: V2\_WR\_TD\_System**

**SCALE: NTS**

**ISSUE DATE: Feb 2019**

Drawn by: MP Checked by: PCI

(To be read in conjunction with Vieo system specification documents)

**Euroclad Group Ltd,  
Wentloog Corporate Park,  
Wentloog Road, Cardiff CF3 2ER  
Tel: +44 (0)2922 010101  
Fax: +44 (0)2922 010122  
Website: [www.vieorooft.com](http://www.vieorooft.com)**

This draft drawing has been supplied by Euro Clad Ltd for the purpose of guidance free of charge. It is a suggested typical detail and as such should not be assumed suitable for any specific project or application. No responsibility is assumed for errors or misinterpretations resulting from the information contained in the drawing. Details are for illustration only and no liability is accepted. We reserve the right to change the details without notice. The drawing is copyright, it remains our property.

Max 660mm

Max 100mm

Ply, Timber or OSB Deck by Others  
(Designed to appropriate standards)

Vieo Sliding Clip

Vieo roofing

Sheet End Turned Down

Vieo Steel Closure Flashing

Gutter

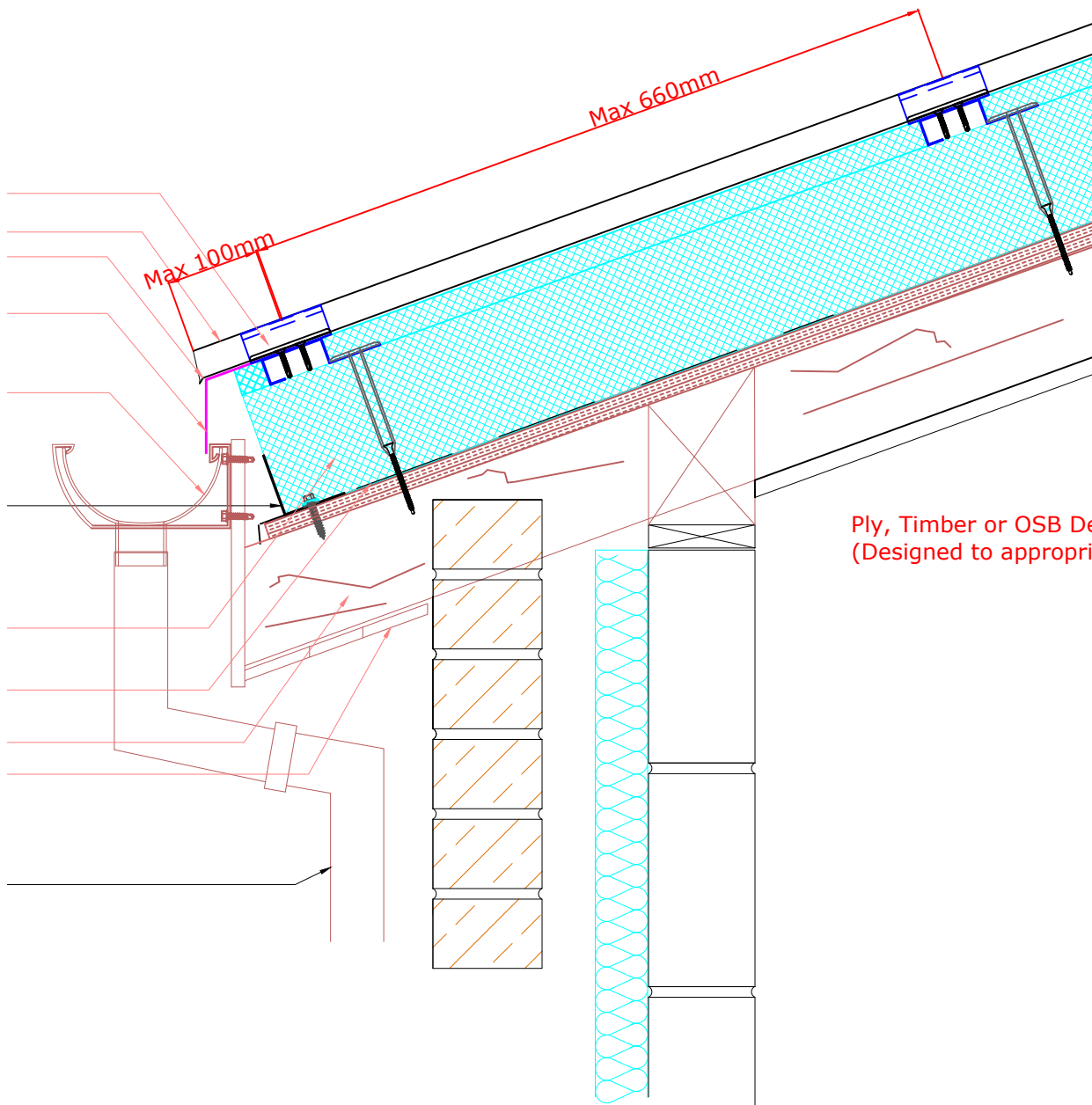
1.2mm Galv Retention Angle  
Fixed through ply/OSB to Timber  
Structure At Max 1200mm Centres

RocSlab Insulation Depth  
According to U value

Elite VCL

Timber structure  
Soffit

Down pipe





**TITLE: Vieo Warm Roof (On Ply, OSB or Timber Deck)**

**DWG NO: V2\_WR\_TD\_System**

**SCALE: NTS**

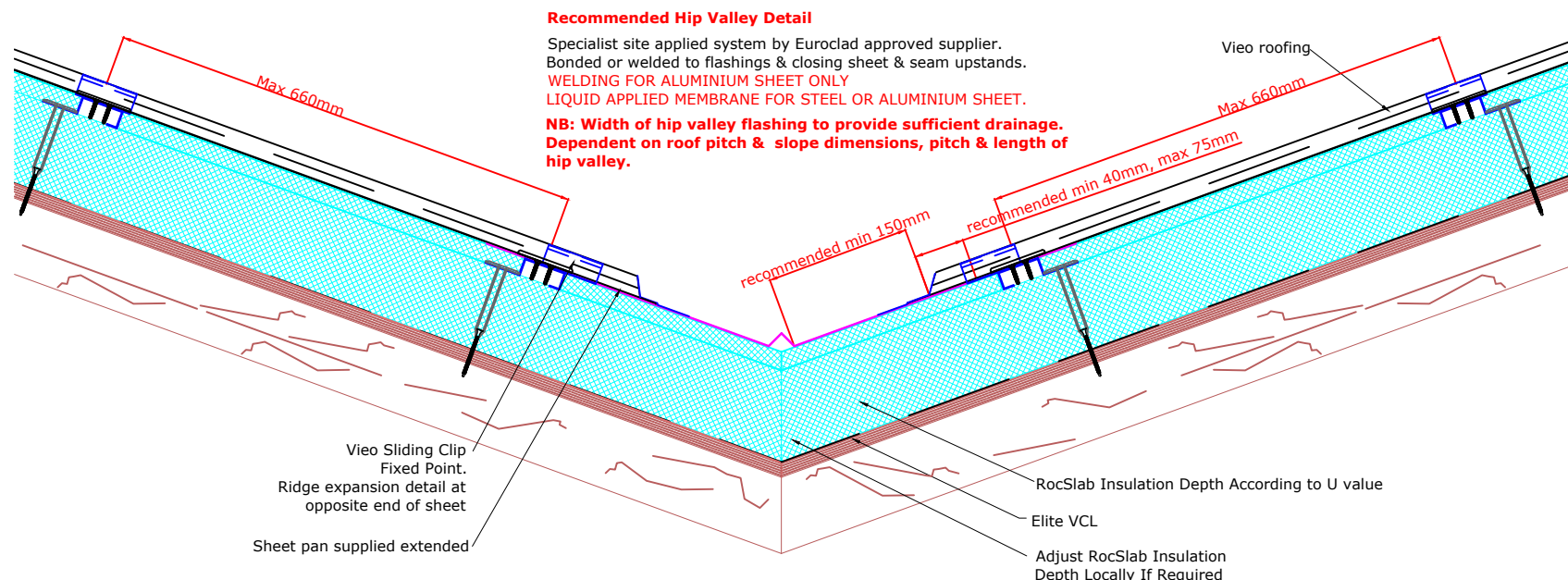
**ISSUE DATE: Feb 2019**

Drawn by: MP Checked by: PCI

(To be read in conjunction with Vieo system specification documents)

**Euroclad Group Ltd,  
Wentloog Corporate Park,  
Wentloog Road, Cardiff CF3 2ER  
Tel: +44 (0)2922 010101  
Fax: +44 (0)2922 010122  
Website: [www.vieoroof.com](http://www.vieoroof.com)**

This draft drawing has been supplied by Euro Clad Ltd for the purpose of guidance free of charge. It is a suggested typical detail and as such should not be assumed suitable for any specific project or application. No responsibility is assumed for errors or misinterpretations resulting from the information contained in the drawing. Details are for illustration only and no liability is accepted. We reserve the right to change the details without notice. The drawing is copyright, it remains our property.

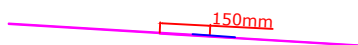


Ply/Timber/OSB deck & rafters by Others in accordance with relevant standards

Specialist site applied system, bonded to flashing, sheet pan & seam upstands by Euroclad approved supplier. NB: Width of hip valley flashing to provide sufficient drainage. Dependent on roof pitch & slope dimensions, pitch & length of hip valley.

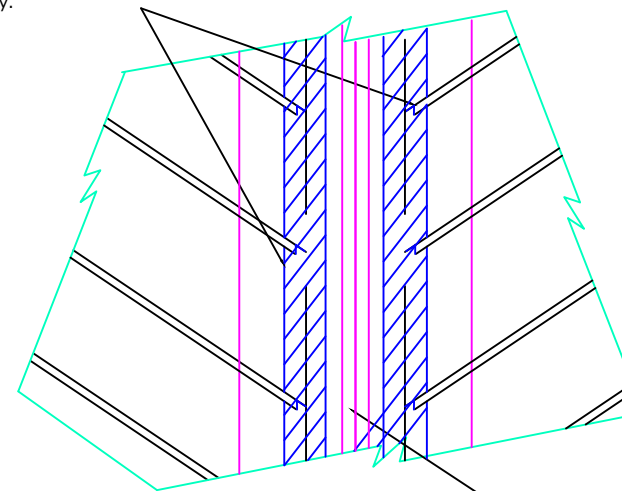
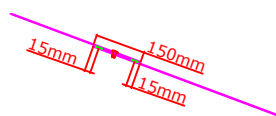
**Suitable for valleys or hip valleys where pitches are 5° or less**

End joints in valley flashing oriented overlapping 150mm downslope & joined with specialist site applied system by Euroclad recommended supplier. Site welding for aluminium only.



**Only suitable where hip valley pitches are >5°**

End joints in valley flashing oriented overlapping 150mm downslope. Rivetted at max 50mm centres with 2 rows of 9 x 3mm mastic positioned 15mm from each end of lap.



Specialist site applied system may be bonded to flashing in 2 strips or may cover the flashing entirely.



**TITLE: Vio Warm Roof (On Ply, OSB or Timber Deck)**

**DWG NO: V2\_WR\_TD\_System**

**SCALE: NTS**

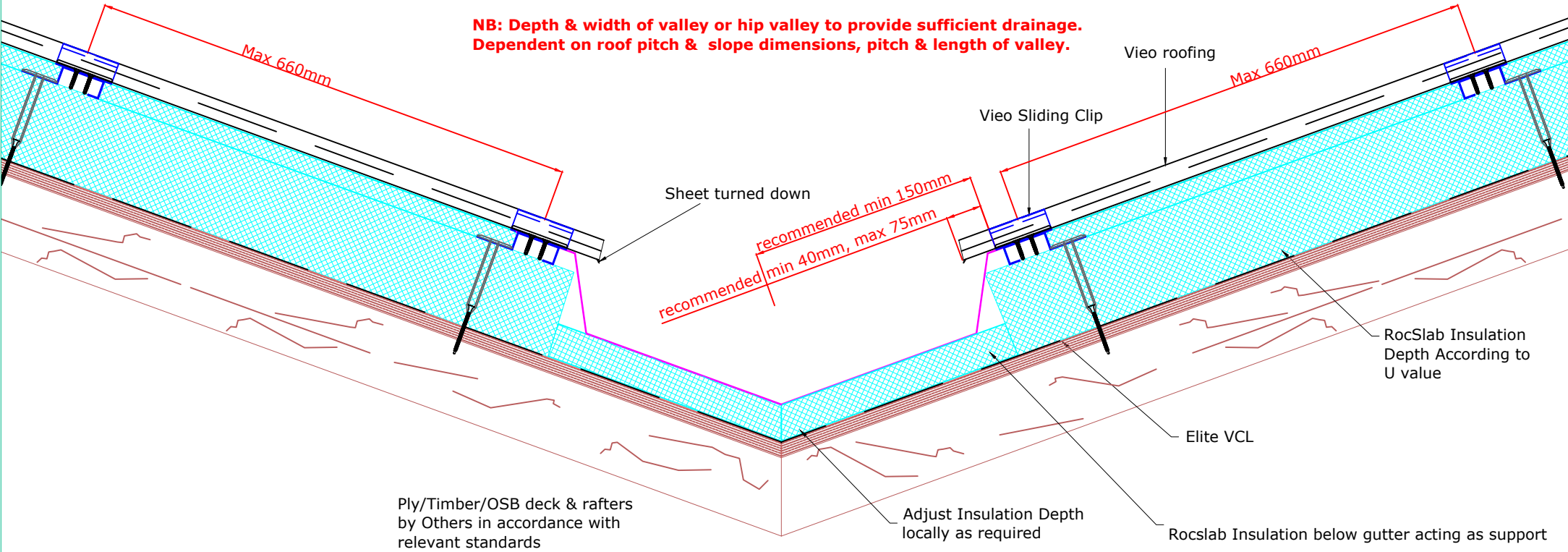
**ISSUE DATE: Feb 2019**

Drawn by: MP Checked by: PCI

(To be read in conjunction with Vio system specification documents)

**Euroclad Group Ltd,  
Wentloog Corporate Park,  
Wentloog Road, Cardiff CF3 2ER  
Tel: +44 (0)2922 010101  
Fax: +44 (0)2922 010122  
Website: [www.vieorooft.com](http://www.vieorooft.com)**

This draft drawing has been supplied by Euro Clad Ltd for the purpose of guidance free of charge. It is a suggested typical detail and as such should not be assumed suitable for any specific project or application. No responsibility is assumed for errors or misinterpretations resulting from the information contained in the drawing. Details are for illustration only and no liability is accepted. We reserve the right to change the details without notice. The drawing is copyright, it remains our property.



**NB: Infill insulation below gutter as required to prevent cold bridging. Cutting required for flat valley gutters.**





**TITLE: Vieo Warm Roof (On Ply, OSB or Timber Deck)**

**DWG NO: V2\_WR\_TD\_System**

**SCALE: NTS**

**ISSUE DATE: Feb 2019**

Drawn by: MP Checked by: PCI

(To be read in conjunction with Vieo system specification documents)

**Euroclad Group Ltd,  
Wentloog Corporate Park,  
Wentloog Road, Cardiff CF3 2ER  
Tel: +44 (0)2922 010101  
Fax: +44 (0)2922 010122  
Website: [www.vieoroof.com](http://www.vieoroof.com)**

This draft drawing has been supplied by Euro Clad Ltd for the purpose of guidance free of charge. It is a suggested typical detail and as such should not be assumed suitable for any specific project or application. No responsibility is assumed for errors or misinterpretations resulting from the information contained in the drawing. Details are for illustration only and no liability is accepted. We reserve the right to change the details without notice. The drawing is copyright, it remains our property.

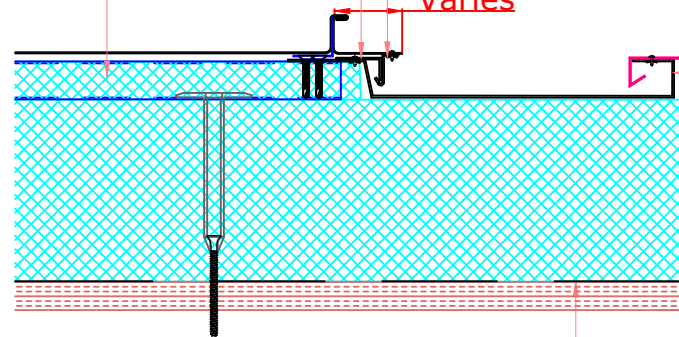
RocSlab & RocBar cut back to suit requirements.  
Ensure RocTube fixing is fixed as close as possible  
to end of RocBar.

Restraining Angle

"J" drip angle rivetted  
at 300mm centres to  
raking edge of Vieo

Varies

Secret "gutter"



RocSlab Insulation  
Depth According to  
U value.

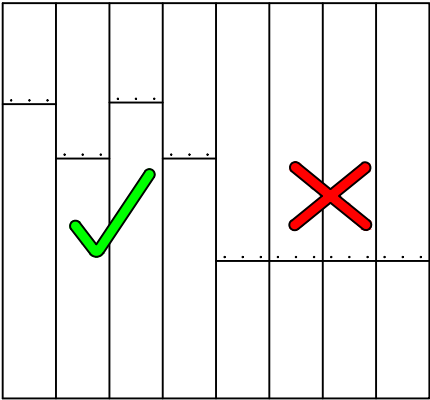
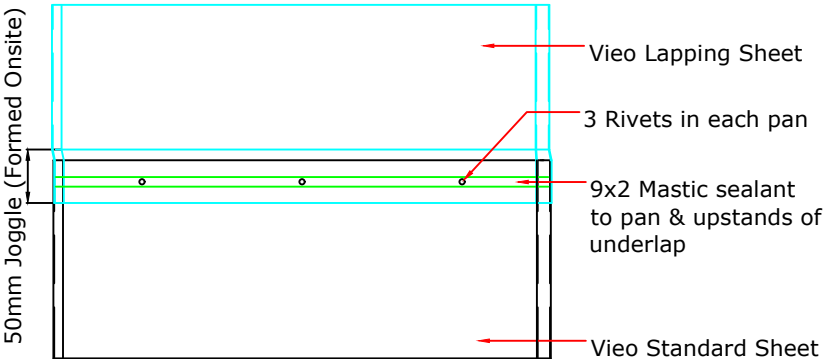




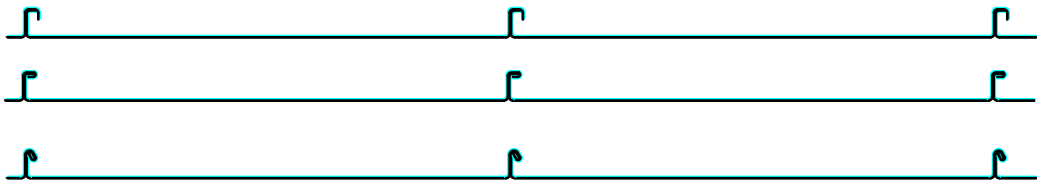
<b>TITLE: Vio Warm Roof (On Ply, OSB or Timber Deck)</b>	(To be read in conjunction with Vio system specification documents)	<b>Euroclad Group Ltd, Wentloog Corporate Park, Wentloog Road, Cardiff CF3 2ER Tel: +44 (0)2922 010101 Fax: +44 (0)2922 010122 Website: <a href="http://www.vieorooft.com">www.vieorooft.com</a></b>
<b>DWG NO: V2_WR_TD_System</b>		
<b>SCALE: NTS</b>		
<b>ISSUE DATE: Feb 2019</b>	Drawn by: MP Checked by: PCI	<small>This draft drawing has been supplied by Euro Clad Ltd for the purpose of guidance free of charge. It is a suggested typical detail and as such should not be assumed suitable for any specific project or application. No responsibility is assumed for errors or misinterpretations resulting from the information contained in the drawing. Details are for illustration only and no liability is accepted. We reserve the right to change the details without notice. The drawing is copyright, it remains our property.</small>

**RIVET ENDLAP DETAIL ONLY SUITABLE  
FOR PITCHES = / > 5°**

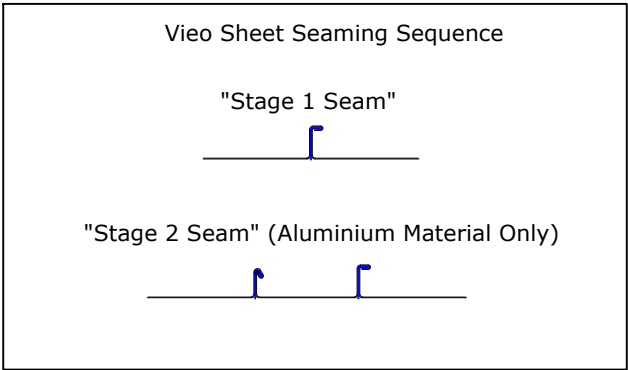
For advice on fixed point locations please contact Euroclad Technical



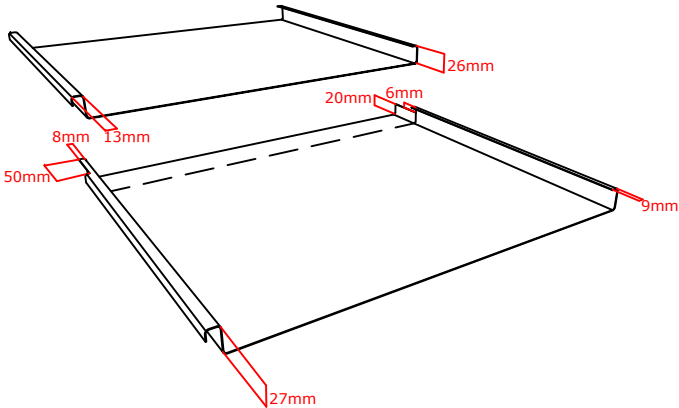
Lap joints must be staggered at least  
100mm apart  
Clips minimum 100mm from joint



**SEAMING OPTIONS AT END LAP**



Vio Sheets cut on  
site prior to jointing





**TITLE: Vieo Warm Roof (On Ply, OSB or Timber Deck)**

**DWG NO: V2\_WR\_TD\_System**

**SCALE: NTS**

**ISSUE DATE: Feb 2019**

Drawn by: MP Checked by: PCI

(To be read in conjunction with Vieo system specification documents)

**Euroclad Group Ltd,  
Wentloog Corporate Park,  
Wentloog Road, Cardiff CF3 2ER  
Tel: +44 (0)2922 010101  
Fax: +44 (0)2922 010122  
Website: [www.vieorooof.com](http://www.vieorooof.com)**

This draft drawing has been supplied by Euro Clad Ltd for the purpose of guidance free of charge. It is a suggested typical detail and as such should not be assumed suitable for any specific project or application. No responsibility is assumed for errors or misinterpretations resulting from the information contained in the drawing. Details are for illustration only and no liability is accepted. We reserve the right to change the details without notice. The drawing is copyright, it remains our property.

Verge Flashing  
(Variable bespoke  
sizes, made to order)

Verge  
Flashing

Sheet seamed  
to clip

Stainless Steel  
Rivet 4.8mm dia

Verge Closure fixed at every RocBar Rail

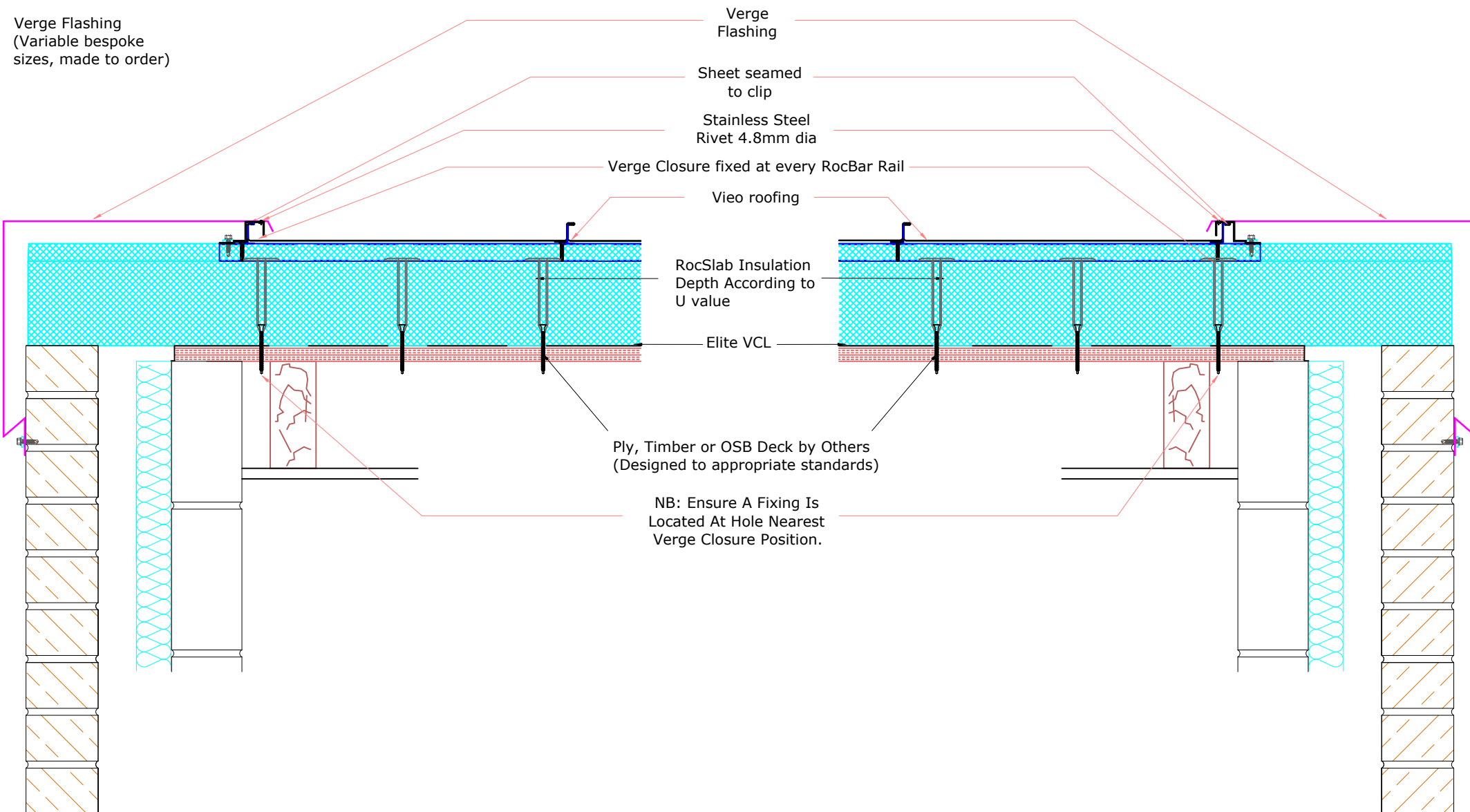
Vieo roofing

RocSlab Insulation  
Depth According to  
U value

Elite VCL

Ply, Timber or OSB Deck by Others  
(Designed to appropriate standards)

NB: Ensure A Fixing Is  
Located At Hole Nearest  
Verge Closure Position.





**TITLE: Vieo Warm Roof (On Ply, OSB or Timber Deck)**

**DWG NO: V2\_WR\_TD\_System**

**SCALE: NTS**

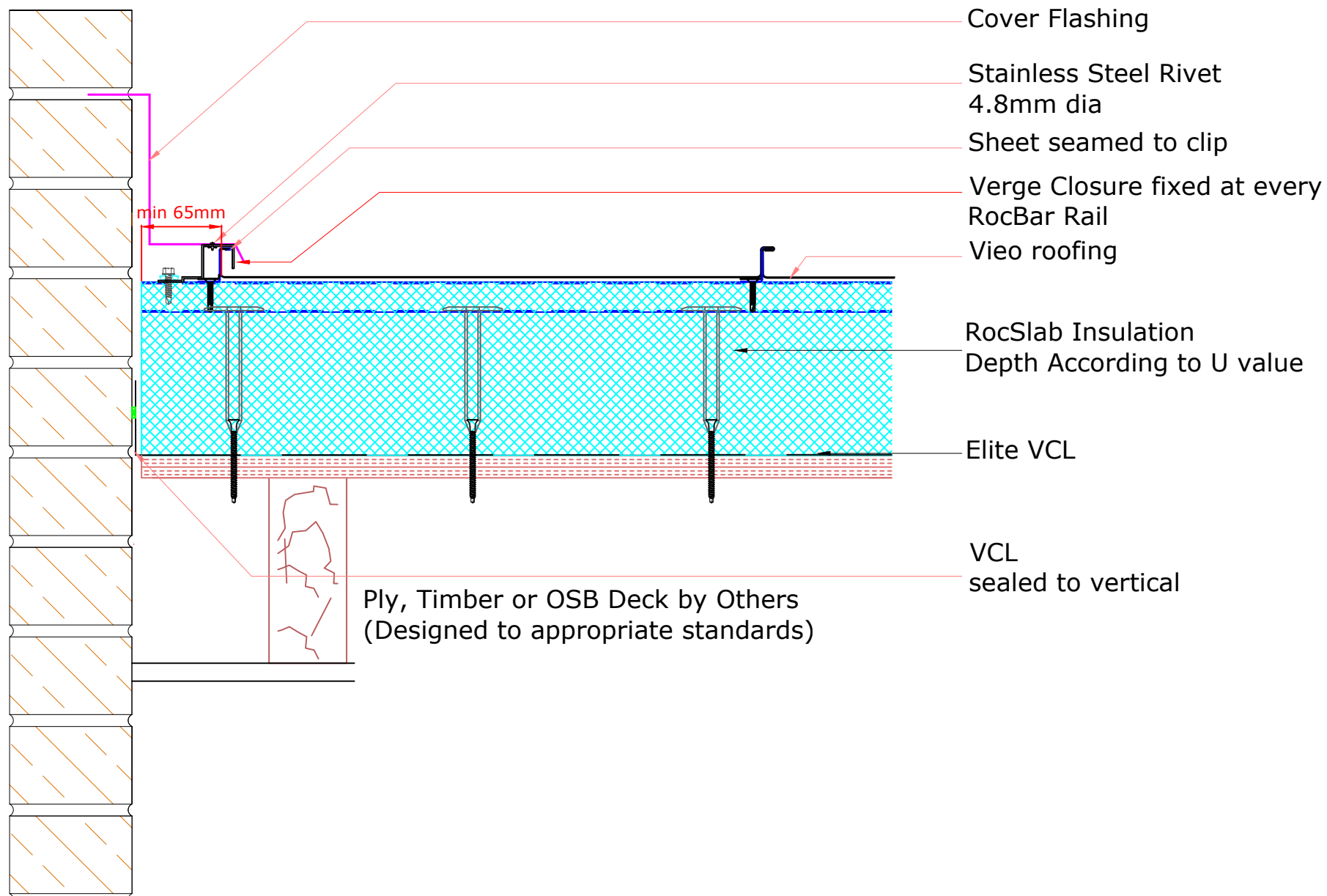
**ISSUE DATE: Feb 2019**

Drawn by: MP Checked by: PCI

(To be read in conjunction with Vieo system specification documents)

**Euroclad Group Ltd,  
Wentloog Corporate Park,  
Wentloog Road, Cardiff CF3 2ER  
Tel: +44 (0)2922 010101  
Fax: +44 (0)2922 010122  
Website: [www.vieorooft.com](http://www.vieorooft.com)**

This draft drawing has been supplied by Euro Clad Ltd for the purpose of guidance free of charge. It is a suggested typical detail and as such should not be assumed suitable for any specific project or application. No responsibility is assumed for errors or misinterpretations resulting from the information contained in the drawing. Details are for illustration only and no liability is accepted. We reserve the right to change the details without notice. The drawing is copyright, it remains our property.





**TITLE: Vieo Warm Roof (On Ply, OSB or Timber Deck)**

**DWG NO: V2\_WR\_TD\_System**

**SCALE: NTS**

**ISSUE DATE: Feb 2019**

Drawn by: MP Checked by: PCI

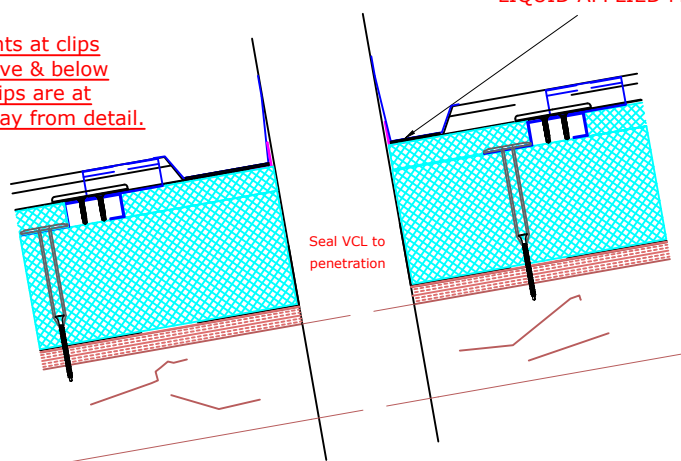
(To be read in conjunction with Vieo system specification documents)

**Euroclad Group Ltd,  
Wentloog Corporate Park,  
Wentloog Road, Cardiff CF3 2ER  
Tel: +44 (0)2922 010101  
Fax: +44 (0)2922 010122  
Website: [www.vieorooft.com](http://www.vieorooft.com)**

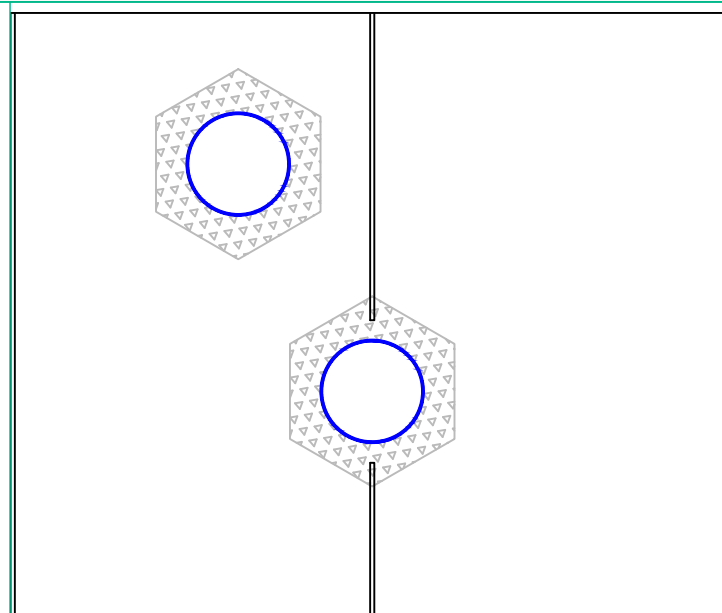
This draft drawing has been supplied by Euro Clad Ltd for the purpose of guidance free of charge. It is a suggested typical detail and as such should not be assumed suitable for any specific project or application. No responsibility is assumed for errors or misinterpretations resulting from the information contained in the drawing. Details are for illustration only and no liability is accepted. We reserve the right to change the details without notice. The drawing is copyright, it remains our property.

## Suitable for all roof pitches

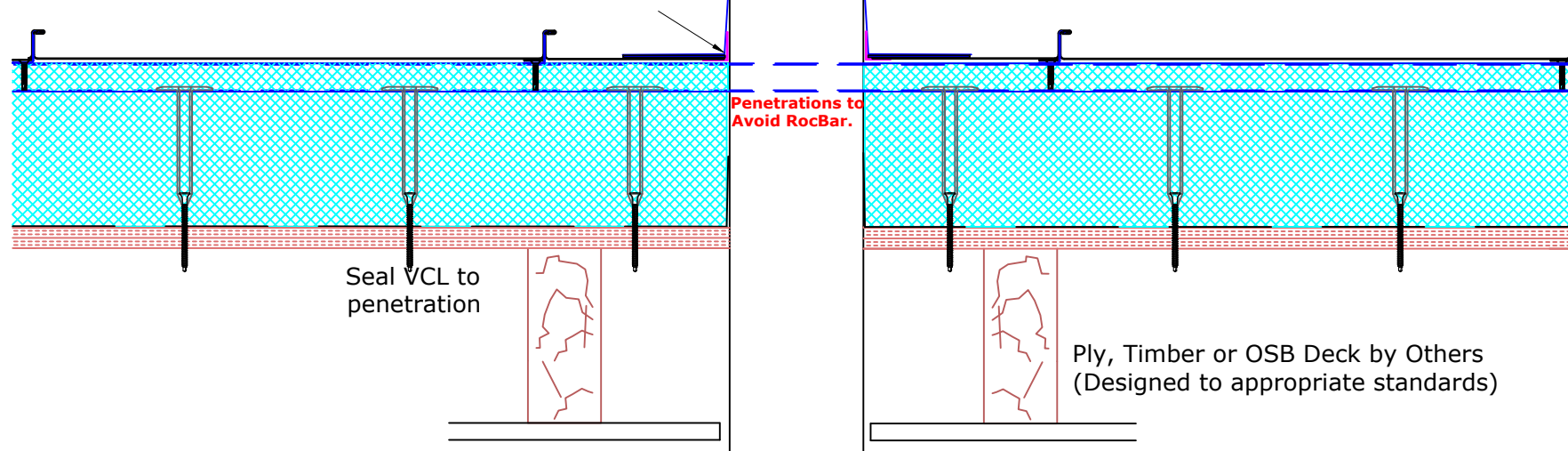
Create fixed points at clips immediately above & below detail. Ensure Clips are at least 100mm away from detail.



Specialist site applied system by Euroclad approved supplier.  
Bonded or welded to flashings & closing sheet & seam upstands.  
**WELDING FOR ALUMINIUM SHEET ONLY**  
**LIQUID APPLIED MEMBRANE FOR STEEL OR ALUMINIUM SHEET.**



Specialist site applied system by Euroclad approved supplier.  
Bonded or welded to flashings & closing sheet & seam upstands.  
**WELDING FOR ALUMINIUM SHEET ONLY**  
**LIQUID APPLIED MEMBRANE FOR STEEL OR ALUMINIUM SHEET.**





**TITLE: Vieo Warm Roof (On Ply, OSB or Timber Deck)**

**DWG NO: V2\_WR\_TD\_System**

**SCALE: NTS**

**ISSUE DATE: Feb 2019**

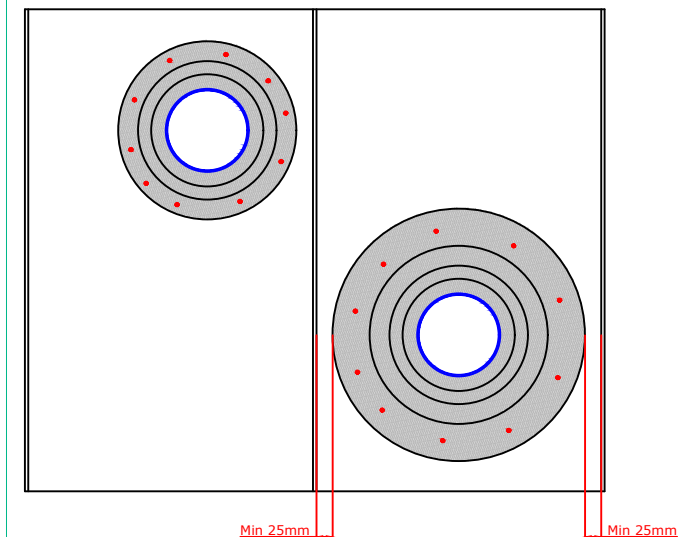
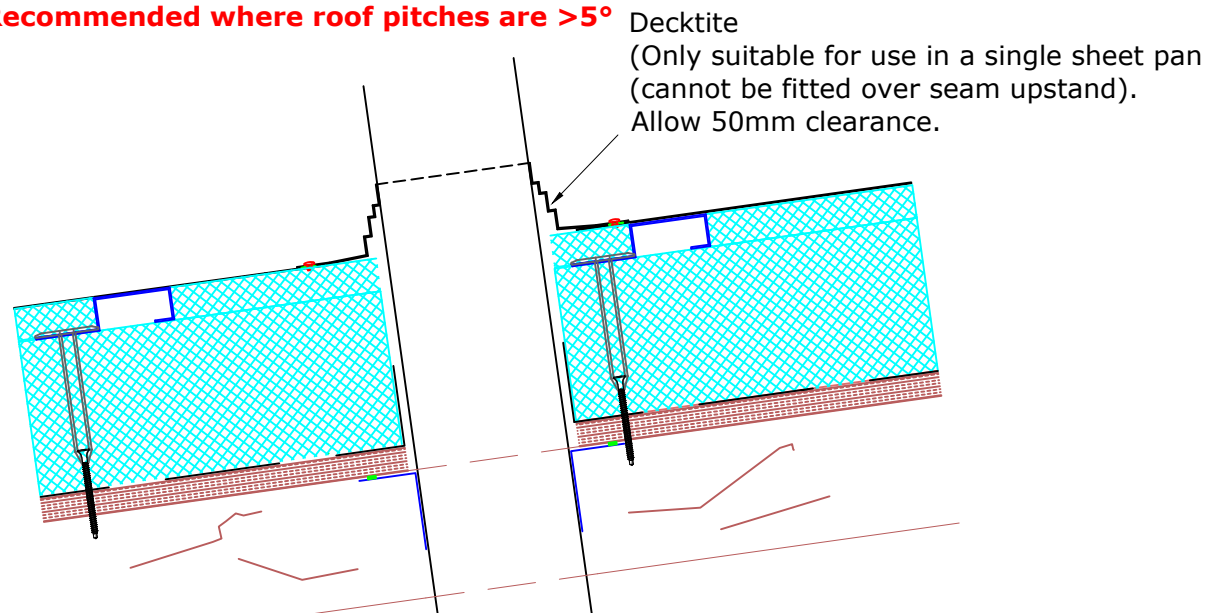
Drawn by: MP Checked by: PCI

(To be read in conjunction with Vieo system specification documents)

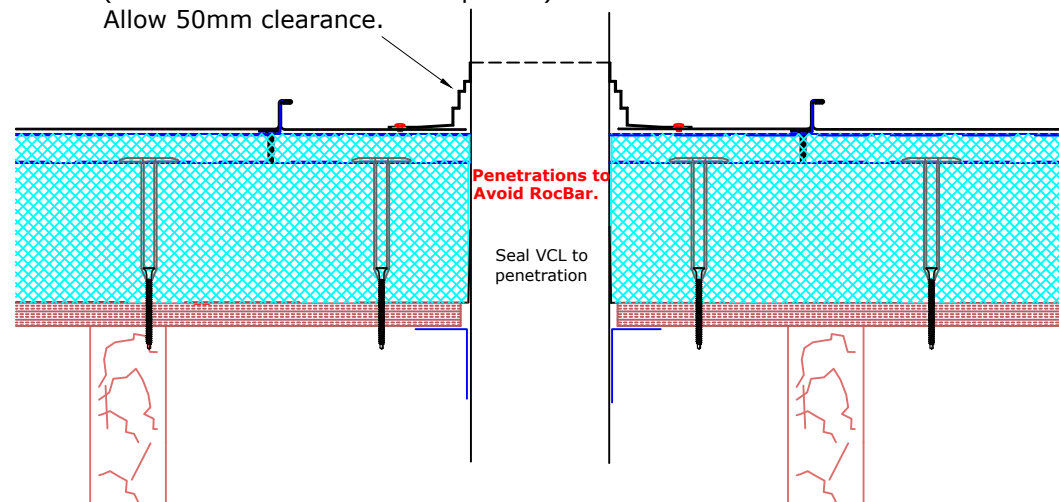
**Euroclad Group Ltd,  
Wentloog Corporate Park,  
Wentloog Road, Cardiff CF3 2ER  
Tel: +44 (0)2922 010101  
Fax: +44 (0)2922 010122  
Website: [www.vieorooft.com](http://www.vieorooft.com)**

This draft drawing has been supplied by Euro Clad Ltd for the purpose of guidance free of charge. It is a suggested typical detail and as such should not be assumed suitable for any specific project or application. No responsibility is assumed for errors or misinterpretations resulting from the information contained in the drawing. Details are for illustration only and no liability is accepted. We reserve the right to change the details without notice. The drawing is copyright, it remains our property.

**Recommended where roof pitches are  $>5^\circ$**



Decktite  
(Only suitable for use in a single sheet pan  
(cannot be fitted over seam upstand).  
Allow 50mm clearance.



Internal sealing of penetration by others, typically at ceiling level.



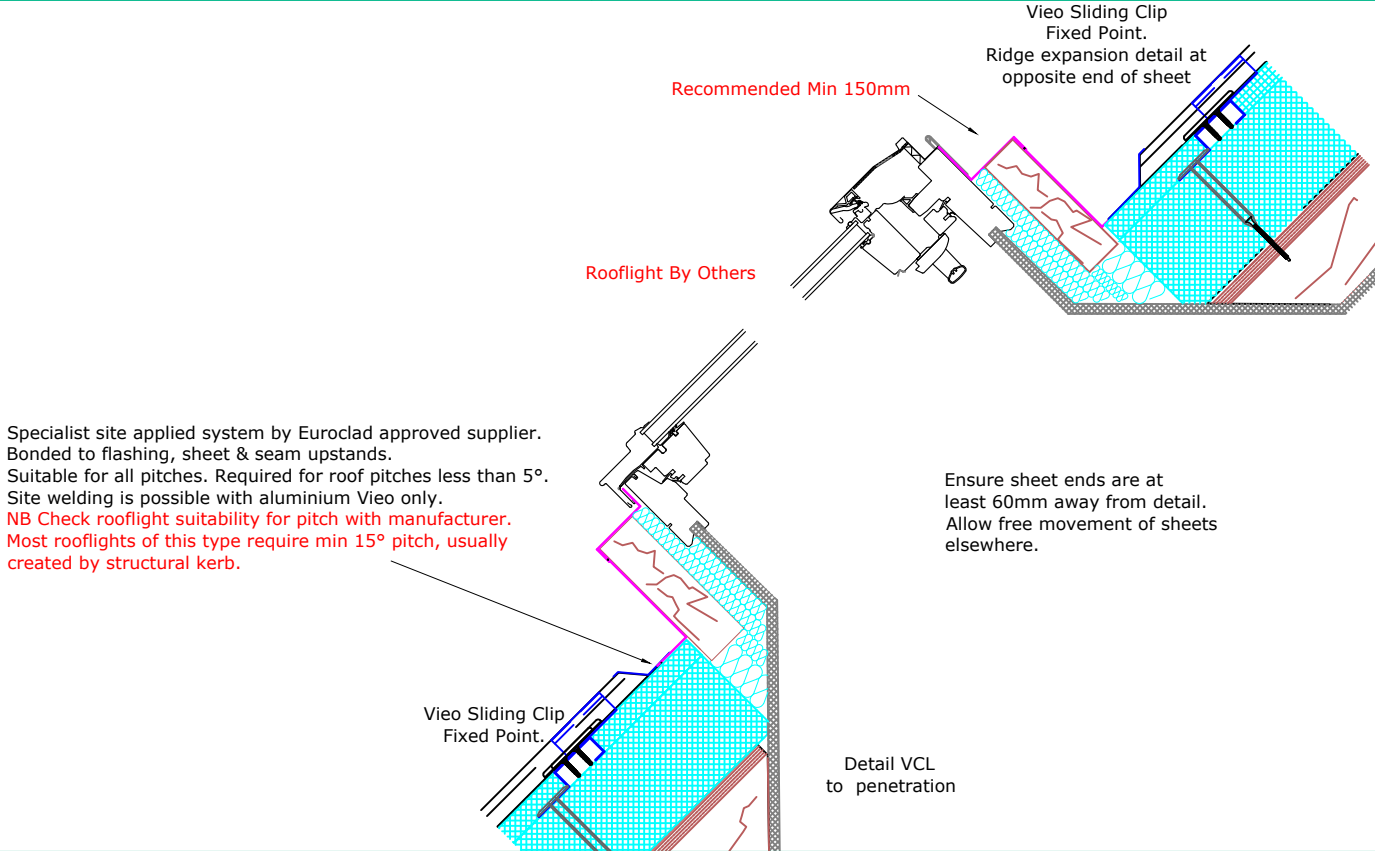
<b>TITLE: Vio Warm Roof (On Ply, OSB or Timber Deck)</b>
<b>DWG NO: V2_WR_TD_System</b>
<b>SCALE: NTS</b>
<b>ISSUE DATE: Feb 2019</b>

Drawn by: MP Checked by: PCI

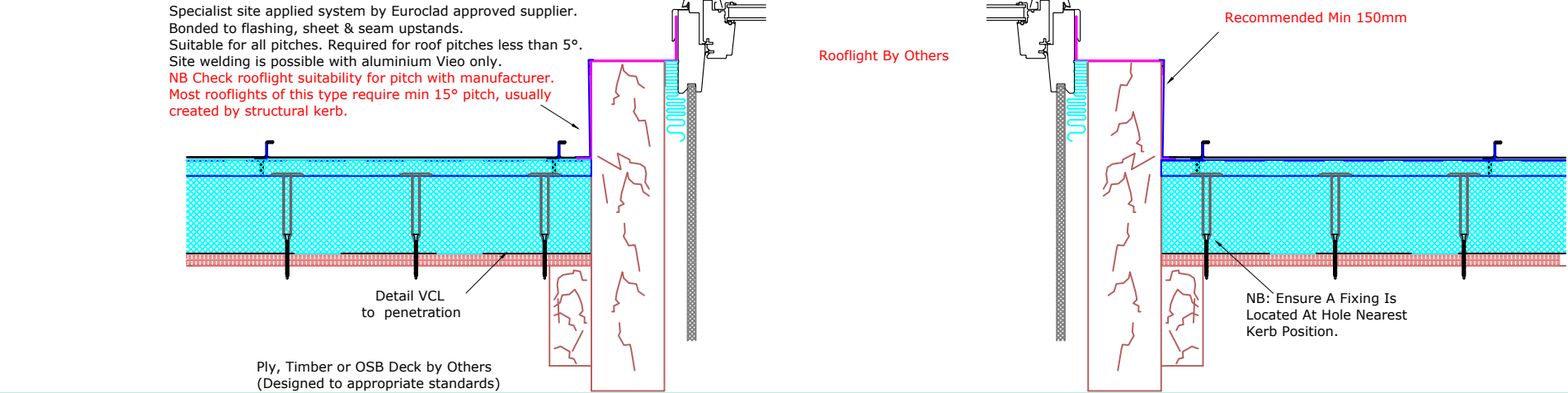
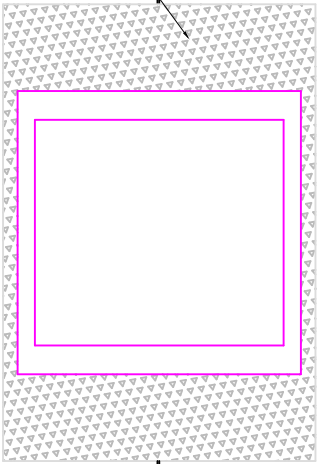
(To be read in conjunction with Vio system specification documents)

**Euroclad Group Ltd,**  
**Wentloog Corporate Park,**  
**Wentloog Road, Cardiff CF3 2ER**  
**Tel: +44 (0)2922 010101**  
**Fax: +44 (0)2922 010122**  
**Website: [www.vieorooft.com](http://www.vieorooft.com)**

This draft drawing has been supplied by Euro Clad Ltd for the purpose of guidance free of charge. It is a suggested typical detail and as such should not be assumed suitable for any specific project or application. No responsibility is assumed for errors or misinterpretations resulting from the information contained in the drawing. Details are for illustration only and no liability is accepted. We reserve the right to change the details without notice. The drawing is copyright, it remains our property.



**Specialist site applied system, by Euroclad approved supplier. Bonded to soaker flashing, sheet & seam upstands. Suitable for all pitches. To provide adequate drainage around upstands. Site welding is a possible alternative with aluminium Vio only. NB Check pitch of structural kerb is suitable for intended use.**







**TITLE: Vieo Warm Roof (On Ply, OSB or Timber Deck)**

**DWG NO: V2\_WR\_TD\_System**

**SCALE: NTS**

**ISSUE DATE: Feb 2019**

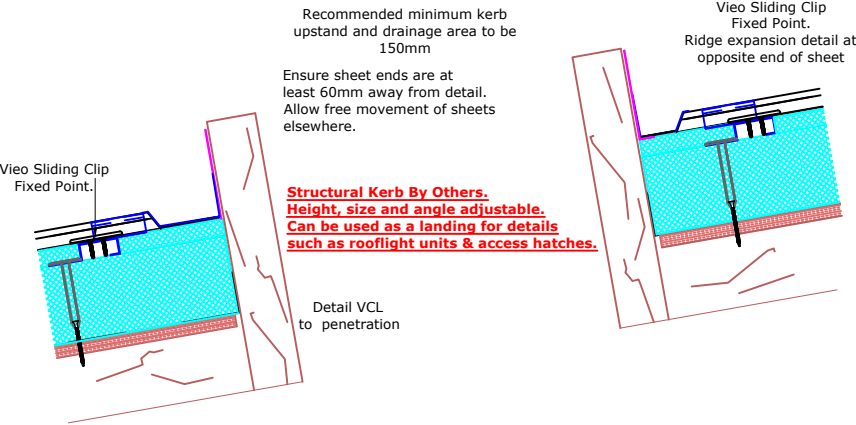
Drawn by: MP Checked by: PCI

(To be read in conjunction with Vieo system specification documents)

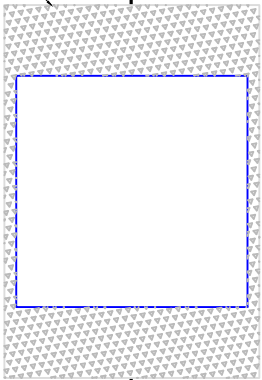
**Euroclad Group Ltd,  
Wentloog Corporate Park,  
Wentloog Road, Cardiff CF3 2ER  
Tel: +44 (0)2922 010101  
Fax: +44 (0)2922 010122  
Website: [www.vieorooft.com](http://www.vieorooft.com)**

This drawing has been supplied by Euro Clad Ltd for the purpose of guidance free of charge. It is a suggested typical detail and as such should not be assumed suitable for any specific project or application. No responsibility is assumed for errors or misinterpretations resulting from the information contained in the drawing. Details are for illustration only and no liability is accepted. We reserve the right to change the details without notice. The drawing is copyright, it remains our property.

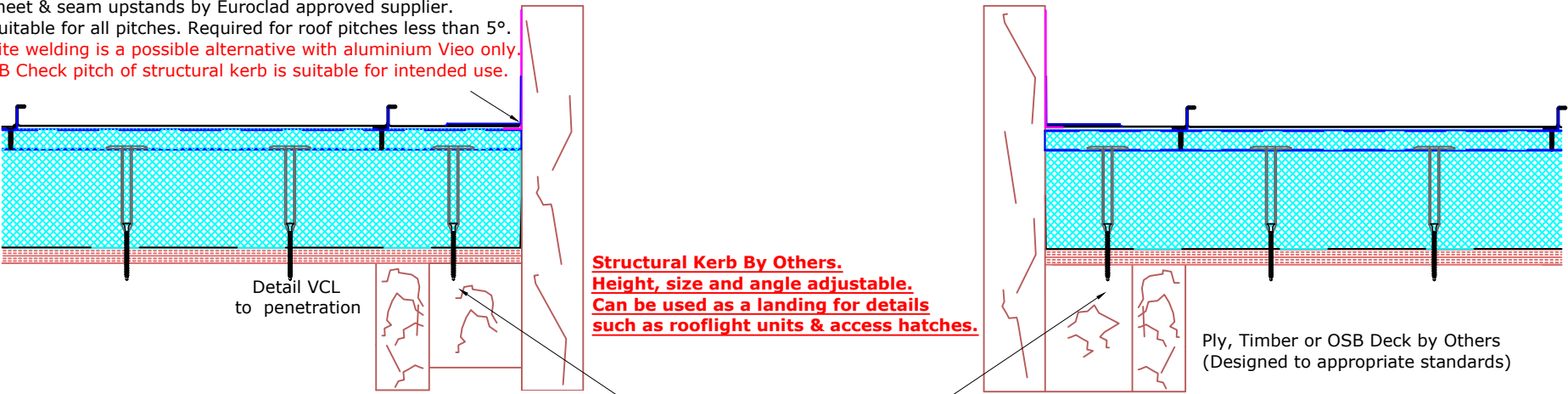
**Specialist site applied system, by Euroclad approved supplier.  
Bonded to soaker flashing, sheet & seam upstands.  
Suitable for all pitches.  
To provide adequate drainage around upstands.  
Site welding is a possible alternative with aluminium Vieo only.  
NB Check pitch of structural kerb is suitable for intended use.**



**Specialist site applied system, by Euroclad approved supplier.  
Bonded to soaker flashing, sheet & seam upstands.  
Suitable for all pitches.  
To provide adequate drainage around upstands.  
Site welding is a possible alternative with aluminium Vieo only.  
NB Check pitch of structural kerb is suitable for intended use.**



**Specialist site applied system, bonded to soaker flashing,  
sheet & seam upstands by Euroclad approved supplier.  
Suitable for all pitches. Required for roof pitches less than 5°.  
Site welding is a possible alternative with aluminium Vieo only.  
NB Check pitch of structural kerb is suitable for intended use.**



NB: Ensure A Fixing Is Located At Hole Nearest Kerb Position.



**TITLE: Vieo Warm Roof (On Ply, OSB or Timber Deck)**

**DWG NO: V2\_WR\_TD\_System**

**SCALE: NTS**

**ISSUE DATE: Feb 2019**

Drawn by: MP Checked by: PCI

(To be read in conjunction with Vieo system specification documents)

**Euroclad Group Ltd,  
Wentloog Corporate Park,  
Wentloog Road, Cardiff CF3 2ER  
Tel: +44 (0)2922 010101  
Fax: +44 (0)2922 010122  
Website: [www.vieoroof.com](http://www.vieoroof.com)**

This draft drawing has been supplied by Euro Clad Ltd for the purpose of guidance free of charge. It is a suggested typical detail and as such should not be assumed suitable for any specific project or application. No responsibility is assumed for errors or misinterpretations resulting from the information contained in the drawing. Details are for illustration only and no liability is accepted. We reserve the right to change the details without notice. The drawing is copyright, it remains our property.

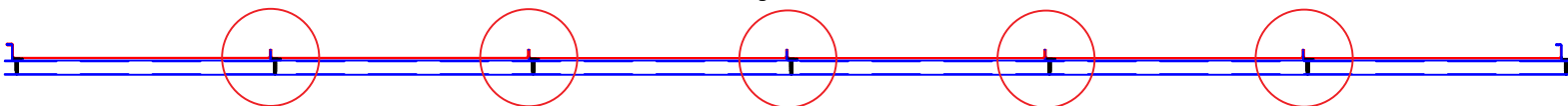
## STEP 1

Damaged sheets in red



## STEP 2

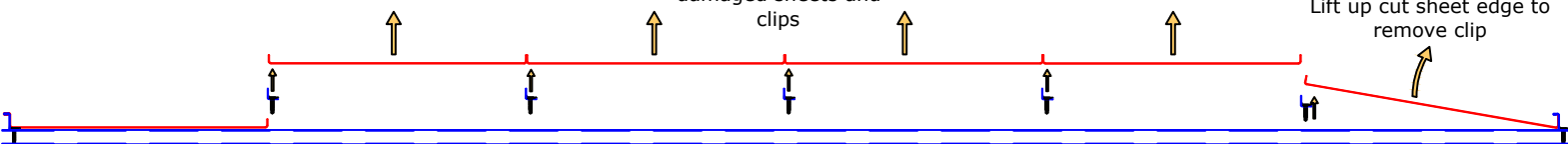
Cut off upstands of damaged sheets



## STEP 3

Remove the central damaged sheets and clips

Lift up cut sheet edge to remove clip



## STEP 4

Apply touch up paint to cut edge.

Apply an adhesive to bond the single upstand sheet to the damaged sheet.

Single upstand sheets

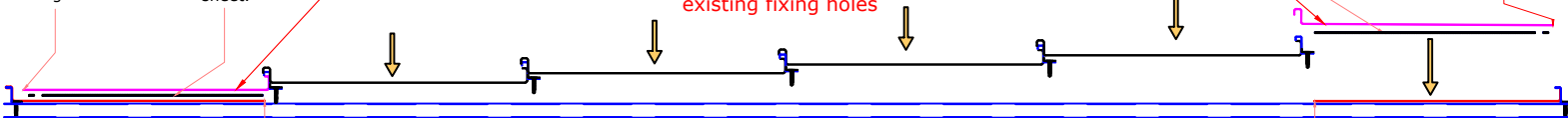
Lay down new sheets and clips.  
**Note: Clip Fixings to be offset from existing fixing holes**

Apply an adhesive to bond the single upstand sheet to the damaged sheet.

Apply touch up paint to cut edge.

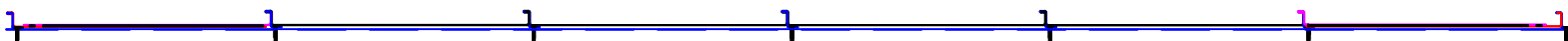
Damaged sheet cut back from cut off upstand to provide a flat bonding surface.

Damaged sheet cut back from cut off upstand to provide a flat bonding surface.

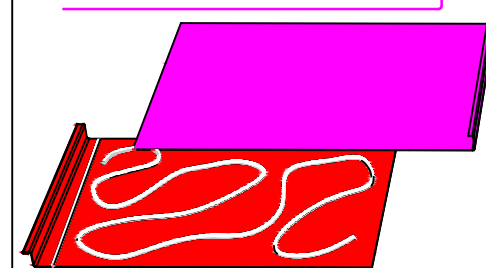


## STEP 5

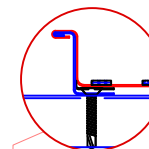
New sheets in place



Single upstand sheet should be manufactured narrower than what was originally ordered to allow for creep of new sheets.



Continuous run of adhesive set back by 10-15mm from sheet edge to be of consistent bead size.



Pressure should be applied to achieve a bond and seal along sheet length. Use sealed rivets if necessary.

