



TITLE: Vieo Horizontal Warm Wall (On Ply or OSB)

DWG NO: V10_HWC_TD_System

SCALE: NTS

ISSUE DATE: Feb 2019

Drawn by: CD Checked by: MP

(To be read in conjunction with Vieo system specification documents)

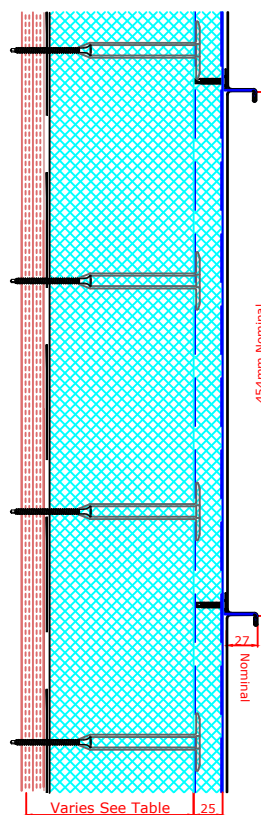
**Euroclad Group Ltd,
Wentloog Corporate Park,
Wentloog Road, Cardiff CF3 2ER
Tel: +44 (0)2922 010101
Fax: +44 (0)2922 010122
Website: www.vieorooft.com**

This draft drawing has been supplied by Euro Clad Ltd for the purpose of guidance free of charge. It is a suggested typical detail and as such should not be assumed suitable for any specific project or application. No responsibility is assumed for errors or misinterpretations resulting from the information contained in the drawing. Details are for illustration only and no liability is accepted. We reserve the right to change the details without notice. The drawing is copyright, it remains our property.

Standard offer is 454mm profile.

Also available on request in other widths from 200mm to 517mm.

Above 454mm is not Technically supported.



Ply/Timber/OSB facing
by Others in accordance
with relevent standards.

U Value	0.25	0.20	0.18	0.15
Insulation Depth (Excluding 25mm upper slab)	115mm	150mm	170mm	205mm
Overall System Depth (Excluding Timber Substrate)	169mm	204mm	224mm	259mm
System Weight / M²				
Steel 0.7mm (Excluding Timber Substrate)	23.28 kg/m ²	24.90 kg/m ²	27.00 kg/m ²	30.68 kg/m ²
System Weight / M²				
Aluminium 0.9mm (Excluding Timber Substrate)	17.74 kg/m ²	21.41 kg/m ²	23.51 kg/m ²	27.19 kg/m ²

U Value (RocSlab Lite)	0.25	0.17	0.15	0.13	0.11
Insulation Depth (Excluding 25mm upper slab)	90mm	130mm	150mm	180mm	200mm
Overall System Depth (Excluding Timber Substrate)	144mm	184mm	204mm	234mm	254mm
System Weight / M²					
Steel 0.7mm (Excluding Timber Substrate)	18.96 kg/m ²	20.24 kg/m ²	20.88 kg/m ²	21.84 kg/m ²	22.48 kg/m ²
System Weight / M²					
Aluminium 0.9mm (Excluding Timber Substrate)	15.47 kg/m ²	16.75 kg/m ²	17.39 kg/m ²	18.35 kg/m ²	18.99 kg/m ²

RocSlab Lite is a combination of PIR and Rock Fibre insulation



TITLE: Vieo Horizontal Warm Wall (On Ply or OSB)

DWG NO: V10_HWC_TD_System

SCALE: NTS

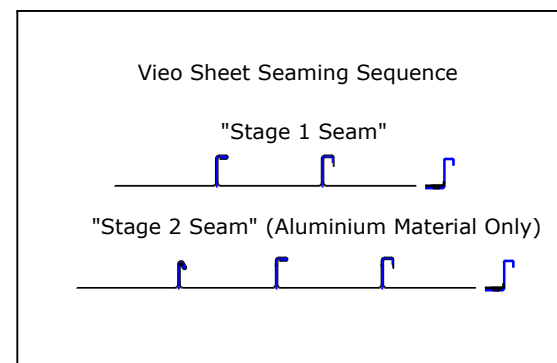
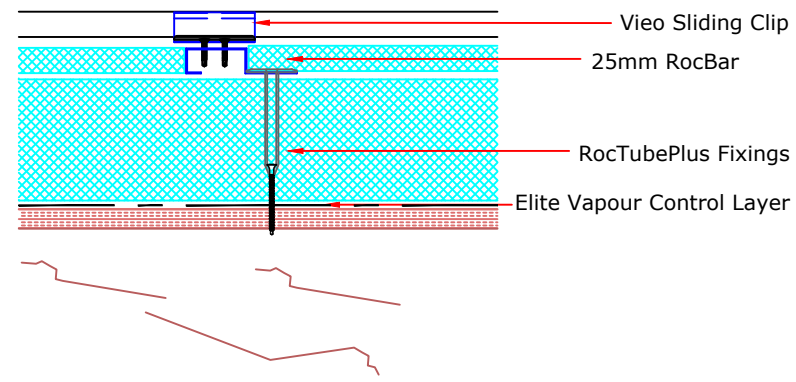
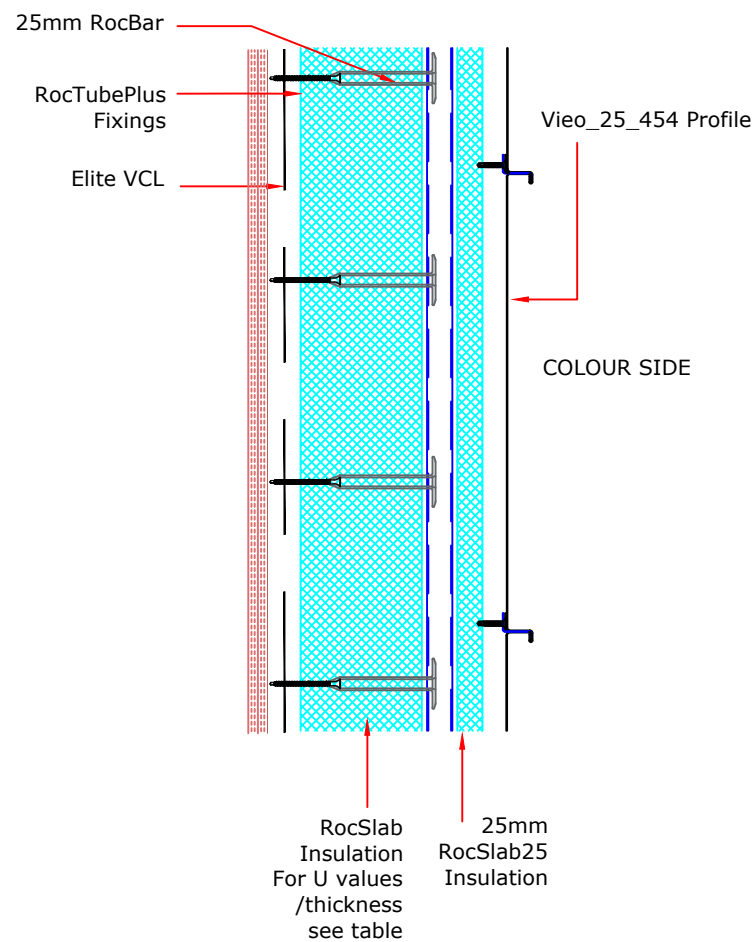
ISSUE DATE: Feb 2019

Drawn by: CD Checked by: MP

(To be read in conjunction with Vieo system specification documents)

**Euroclad Group Ltd,
Wentloog Corporate Park,
Wentloog Road, Cardiff CF3 2ER
Tel: +44 (0)2922 010101
Fax: +44 (0)2922 010122
Website: www.vieorooft.com**

This draft drawing has been supplied by Euro Clad Ltd for the purpose of guidance free of charge. It is a suggested typical detail and as such should not be assumed suitable for any specific project or application. No responsibility is assumed for errors or misinterpretations resulting from the information contained in the drawing. Details are for illustration only and no liability is accepted. We reserve the right to change the details without notice. The drawing is copyright, it remains our property.





TITLE: Vieo Horizontal Warm Wall (On Ply or OSB)

DWG NO: V10_HWC_TD_System

SCALE: NTS

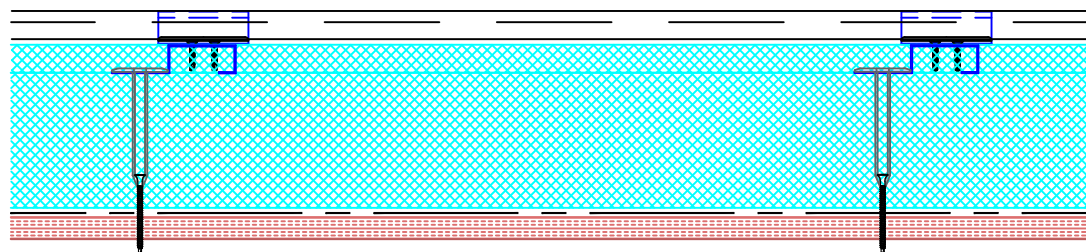
ISSUE DATE: Feb 2019

Drawn by: CD Checked by: MP

(To be read in conjunction with Vieo system specification documents)

**Euroclad Group Ltd,
Wentloog Corporate Park,
Wentloog Road, Cardiff CF3 2ER
Tel: +44 (0)2922 010101
Fax: +44 (0)2922 010122
Website: www.vieorooft.com**

This draft drawing has been supplied by Euro Clad Ltd for the purpose of guidance free of charge. It is a suggested typical detail and as such should not be assumed suitable for any specific project or application. No responsibility is assumed for errors or misinterpretations resulting from the information contained in the drawing. Details are for illustration only and no liability is accepted. We reserve the right to change the details without notice. The drawing is copyright, it remains our property.



TYPICAL ARRANGEMENT: 1260mm IN CENTRAL AREAS, REDUCE CLIP CENTRES AT CORNERS AND IN HIGH LOAD AREAS.

CHECK SYSTEM CAPACITY AGAINST PROJECT LOADS AND ADJUST IF NECESSARY

CLIP TYPICAL CENTRES (APPLICABLE FOR STAGE 1 ALUMINIUM VIEO SHEETS ONLY):

DETERMINED BY PROJECT WIND SUCTION LOADS AS FOLLOWS:

1260mm for loads up to 0.8kN/M^2

660mm for loads 0.8 to 1.2kN/M^2

300mm for loads 1.2 to 3kN/M^2

Where substrate is Min 18mm ply or Min 15mm OSB 3

IF HIGHER WIND LOADS ARE ANTICIPATED PLEASE REFER TO BELOW;

CLIP TYPICAL CENTRES (APPLICABLE FOR STAGE 2 ALUMINIUM VIEO SHEETS AND STAGE 1 STEEL VIEO SHEETS):

1260mm for loads up to 1.5kN/M^2

660mm for loads 1.5 to 2.0kN/M^2

300mm for loads 2 to 4kN/M^2

Where substrate is Min 18mm ply or Min 15mm OSB 3

**# end of Vieo sheet
must fall under
downslope edge of
inverted Closure**



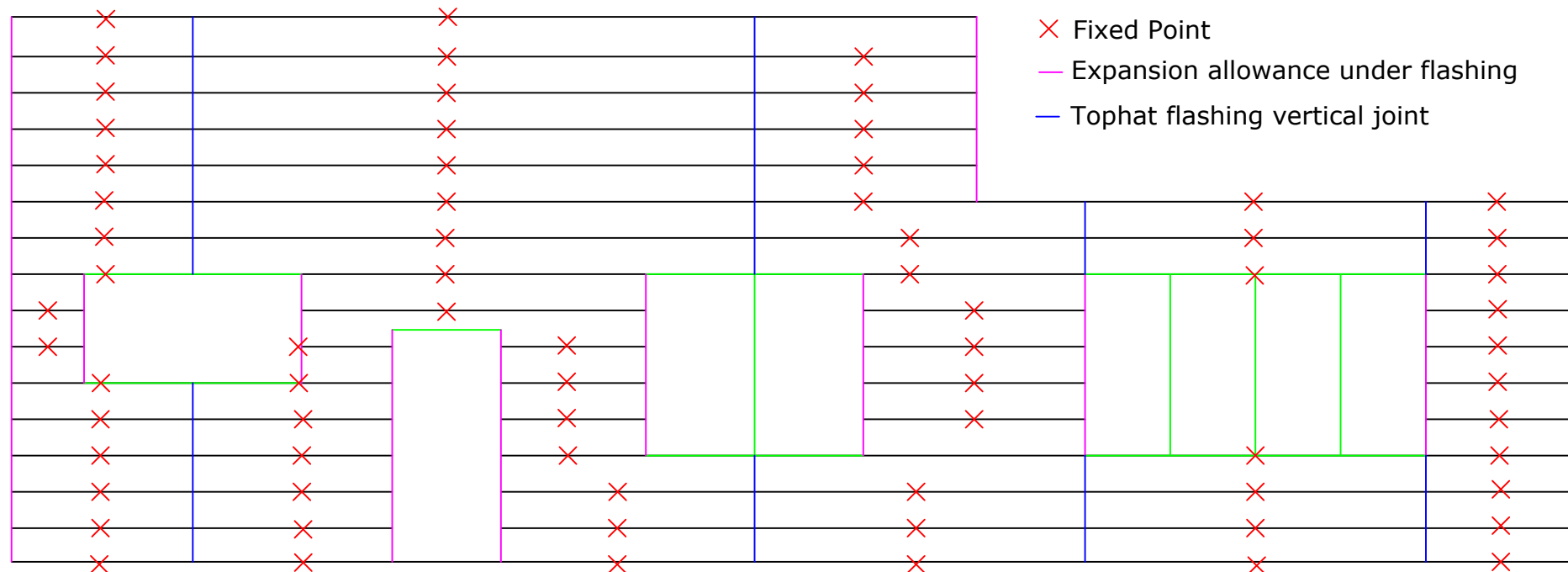
TITLE: Vieo Horizontal Warm Wall (On Ply or OSB)
DWG NO: V10_HWC_TD_System
SCALE: NTS
ISSUE DATE: Feb 2019

Drawn by: CD Checked by: MP

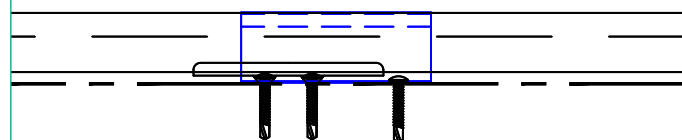
(To be read in conjunction with Vieo system specification documents)

Euroclad Group Ltd,
Wentloog Corporate Park,
Wentloog Road, Cardiff CF3 2ER
Tel: +44 (0)2922 010101
Fax: +44 (0)2922 010122
Website: www.vieorooft.com

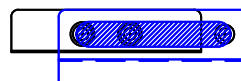
This draft drawing has been supplied by Euro Clad Ltd for the purpose of guidance free of charge. It is a suggested typical detail and as such should not be assumed suitable for any specific project or application. No responsibility is assumed for errors or misinterpretations resulting from the information contained in the drawing. Details are for illustration only and no liability is accepted. We reserve the right to change the details without notice. The drawing is copyright, it remains our property.



Create fixed point using clip with additional fixing.
Max sheet length recommended 20M.
To divide expansion clearance required create fixed point in middle of sheet.



Assembled Front View





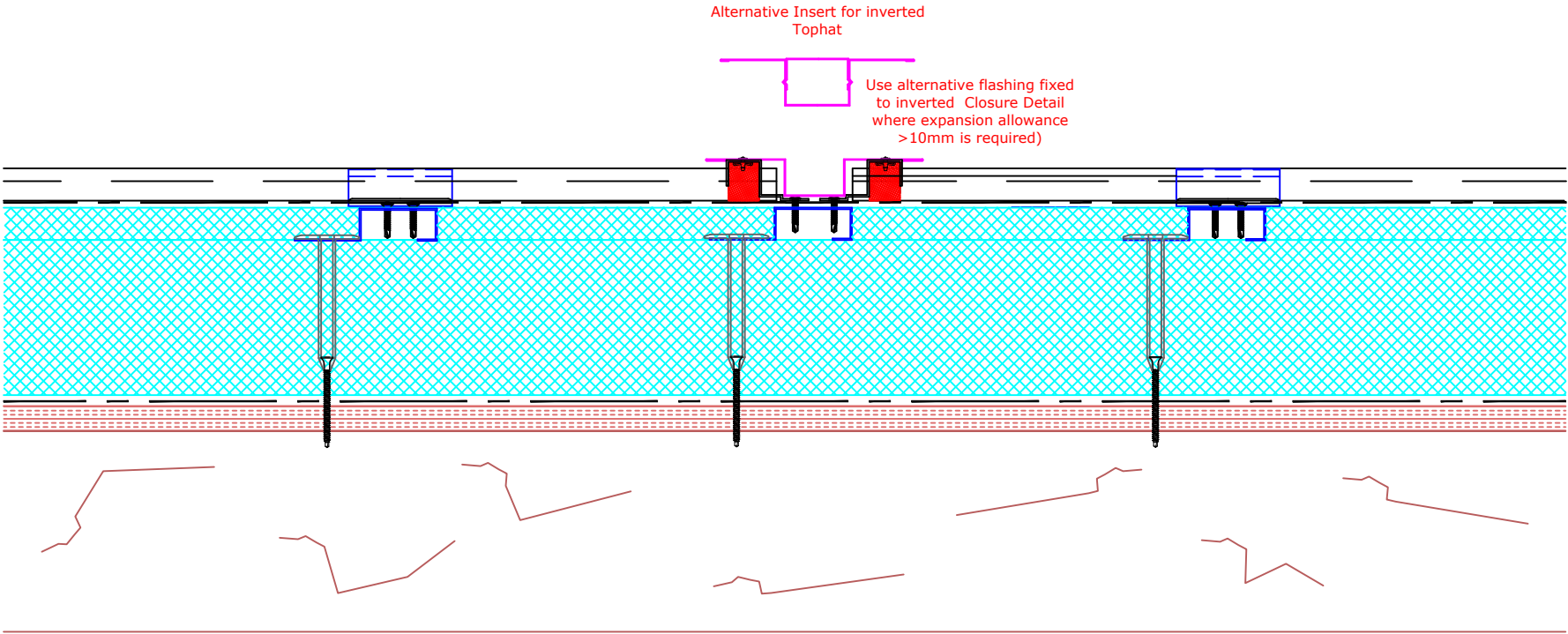
TITLE: Vieo Horizontal Warm Wall (On Ply or OSB)
DWG NO: V10_HWC_TD_System
SCALE: NTS
ISSUE DATE: Feb 2019

Drawn by: CD Checked by: MP

(To be read in conjunction with Vieo system specification documents)

**Euroclad Group Ltd,
Wentloog Corporate Park,
Wentloog Road, Cardiff CF3 2ER
Tel: +44 (0)2922 010101
Fax: +44 (0)2922 010122
Website: www.vieorooft.com**

This draft drawing has been supplied by Euro Clad Ltd for the purpose of guidance free of charge. It is a suggested typical detail and as such should not be assumed suitable for any specific project or application. No responsibility is assumed for errors or misinterpretations resulting from the information contained in the drawing. Details are for illustration only and no liability is accepted. We reserve the right to change the details without notice. The drawing is copyright, it remains our property.





TITLE: Vieo Horizontal Warm Wall (On Ply or OSB)

DWG NO: V10_HWC_TD_System

SCALE: NTS

ISSUE DATE: Feb 2019

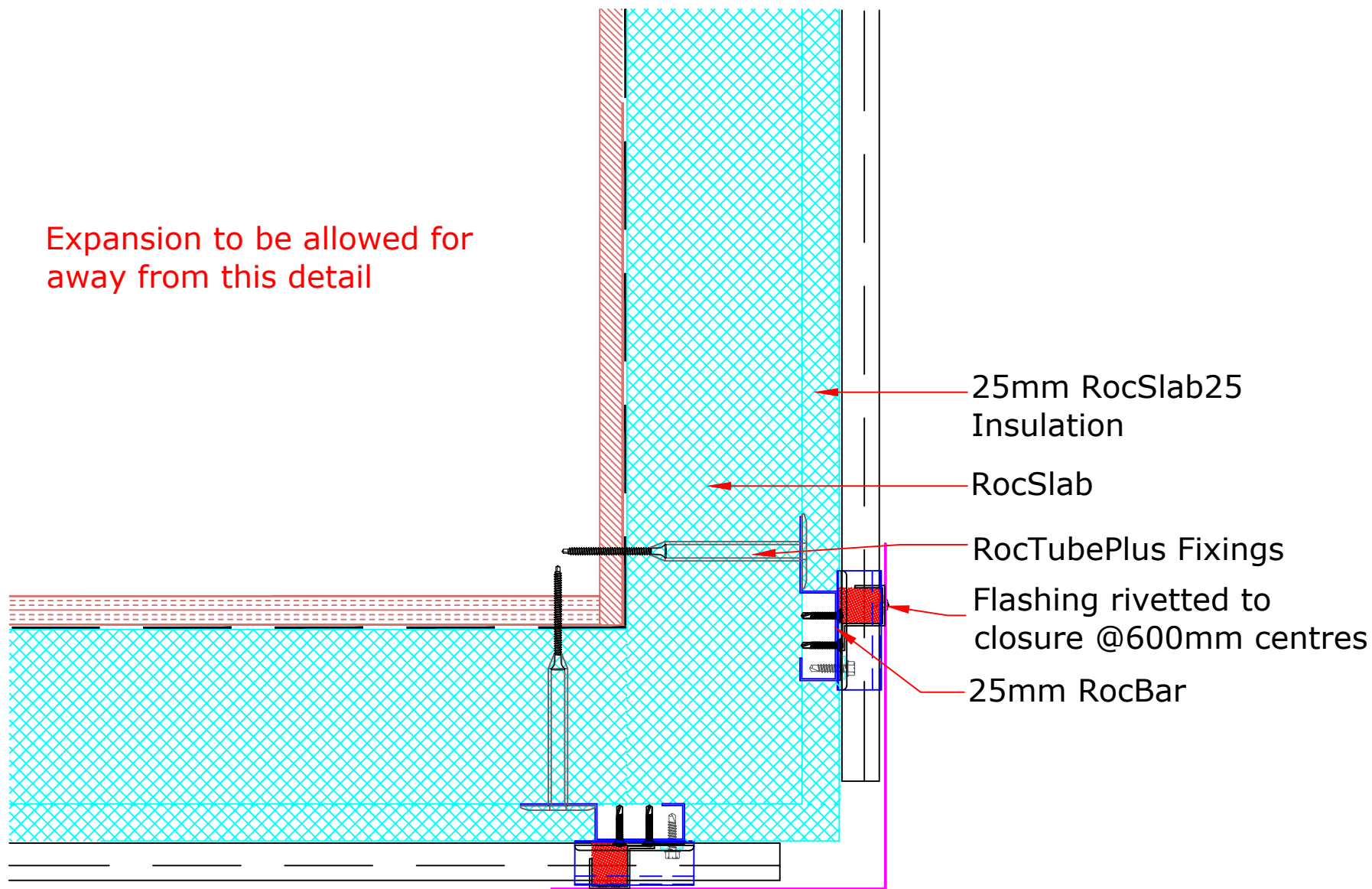
Drawn by: CD Checked by: MP

(To be read in conjunction with Vieo system specification documents)

**Euroclad Group Ltd,
Wentloog Corporate Park,
Wentloog Road, Cardiff CF3 2ER
Tel: +44 (0)2922 010101
Fax: +44 (0)2922 010122
Website: www.vieorooft.com**

This draft drawing has been supplied by Euro Clad Ltd for the purpose of guidance free of charge. It is a suggested typical detail and as such should not be assumed suitable for any specific project or application. No responsibility is assumed for errors or misinterpretations resulting from the information contained in the drawing. Details are for illustration only and no liability is accepted. We reserve the right to change the details without notice. The drawing is copyright, it remains our property.

Expansion to be allowed for
away from this detail





TITLE: Vieo Horizontal Warm Wall (On Ply or OSB)

DWG NO: V10_HWC_TD_System

SCALE: NTS

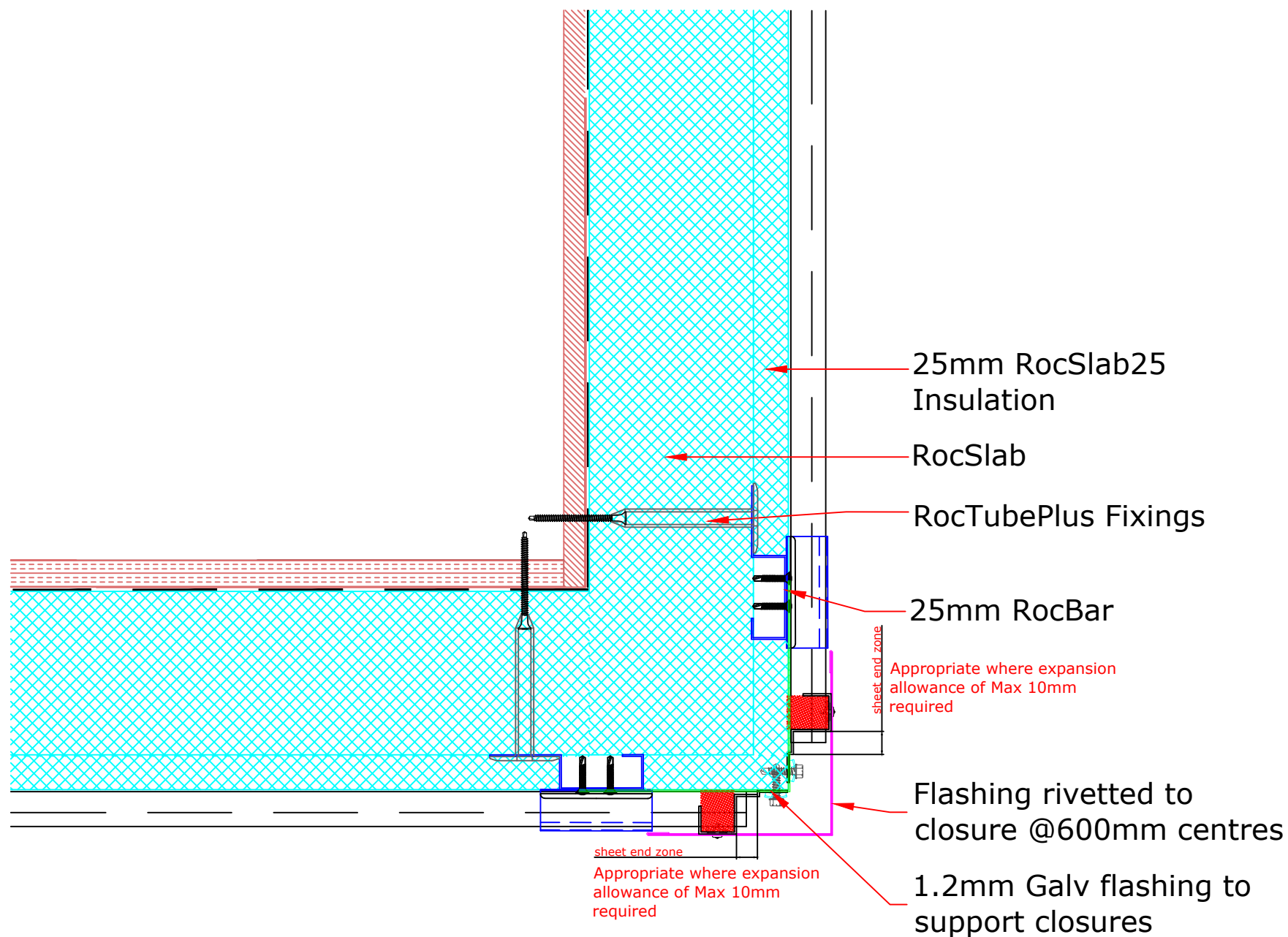
ISSUE DATE: Feb 2019

Drawn by: CD Checked by: MP

(To be read in conjunction with Vieo system specification documents)

**Euroclad Group Ltd,
Wentloog Corporate Park,
Wentloog Road, Cardiff CF3 2ER
Tel: +44 (0)2922 010101
Fax: +44 (0)2922 010122
Website: www.vieorooft.com**

This draft drawing has been supplied by Euro Clad Ltd for the purpose of guidance free of charge. It is a suggested typical detail and as such should not be assumed suitable for any specific project or application. No responsibility is assumed for errors or misinterpretations resulting from the information contained in the drawing. Details are for illustration only and no liability is accepted. We reserve the right to change the details without notice. The drawing is copyright, it remains our property.





TITLE: Vieo Horizontal Warm Wall (On Ply or OSB)

DWG NO: V10_HWC_TD_System

SCALE: NTS

ISSUE DATE: Feb 2019

Drawn by: CD Checked by: MP

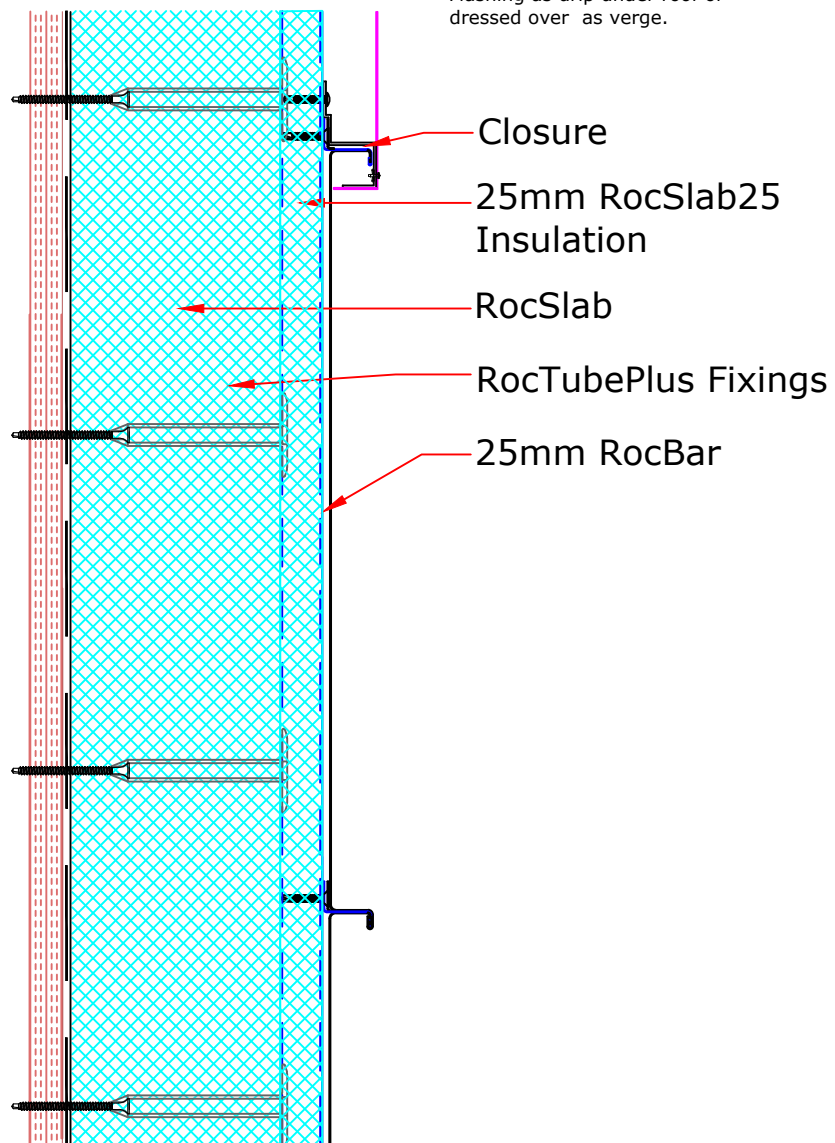
(To be read in conjunction with Vieo system specification documents)

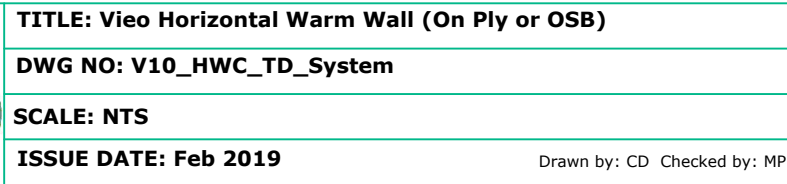
**Euroclad Group Ltd,
Wentloog Corporate Park,
Wentloog Road, Cardiff CF3 2ER
Tel: +44 (0)2922 010101
Fax: +44 (0)2922 010122
Website: www.vieorooft.com**

This draft drawing has been supplied by Euro Clad Ltd for the purpose of guidance free of charge. It is a suggested typical detail and as such should not be assumed suitable for any specific project or application. No responsibility is assumed for errors or misinterpretations resulting from the information contained in the drawing. Details are for illustration only and no liability is accepted. We reserve the right to change the details without notice. The drawing is copyright, it remains our property.

At gable ends it is normally necessary to use rake cut sheets with bespoke length fillers and closure sections. In some cases it may be possible to detail tapered sheets or flashings.

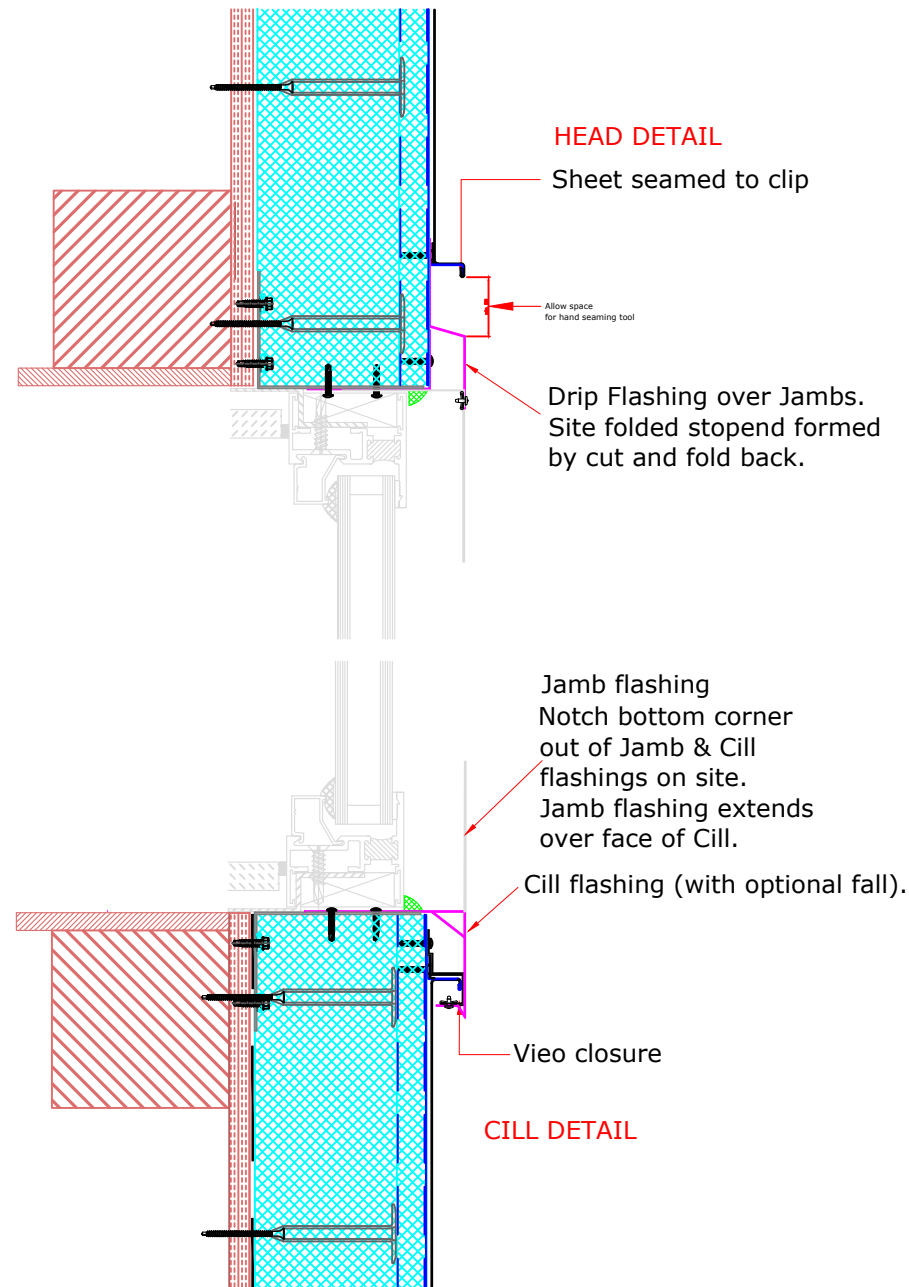
Flashing as drip under roof or dressed over as verge.





**Euroclad Group Ltd,
Wentloog Corporate Park,
Wentloog Road, Cardiff CF3 2ER
Tel: +44 (0)2922 010101
Fax: +44 (0)2922 010122
Website: www.vieorooft.com**

This draft drawing has been supplied by Eurad Ltd for the purpose of guidance free of charge. It is a suggested typical detail and as such should not be assumed suitable for any specific project or application. No responsibility is assumed for errors or misinterpretations resulting from the information contained in the drawing. Details are for illustration only and no liability is accepted. We reserve the right to change the details without notice. The drawing is copyright, it remains our property.





TITLE: Vieo Horizontal Warm Wall (On Ply or OSB)

DWG NO: V10_HWC_TD_System

SCALE: NTS

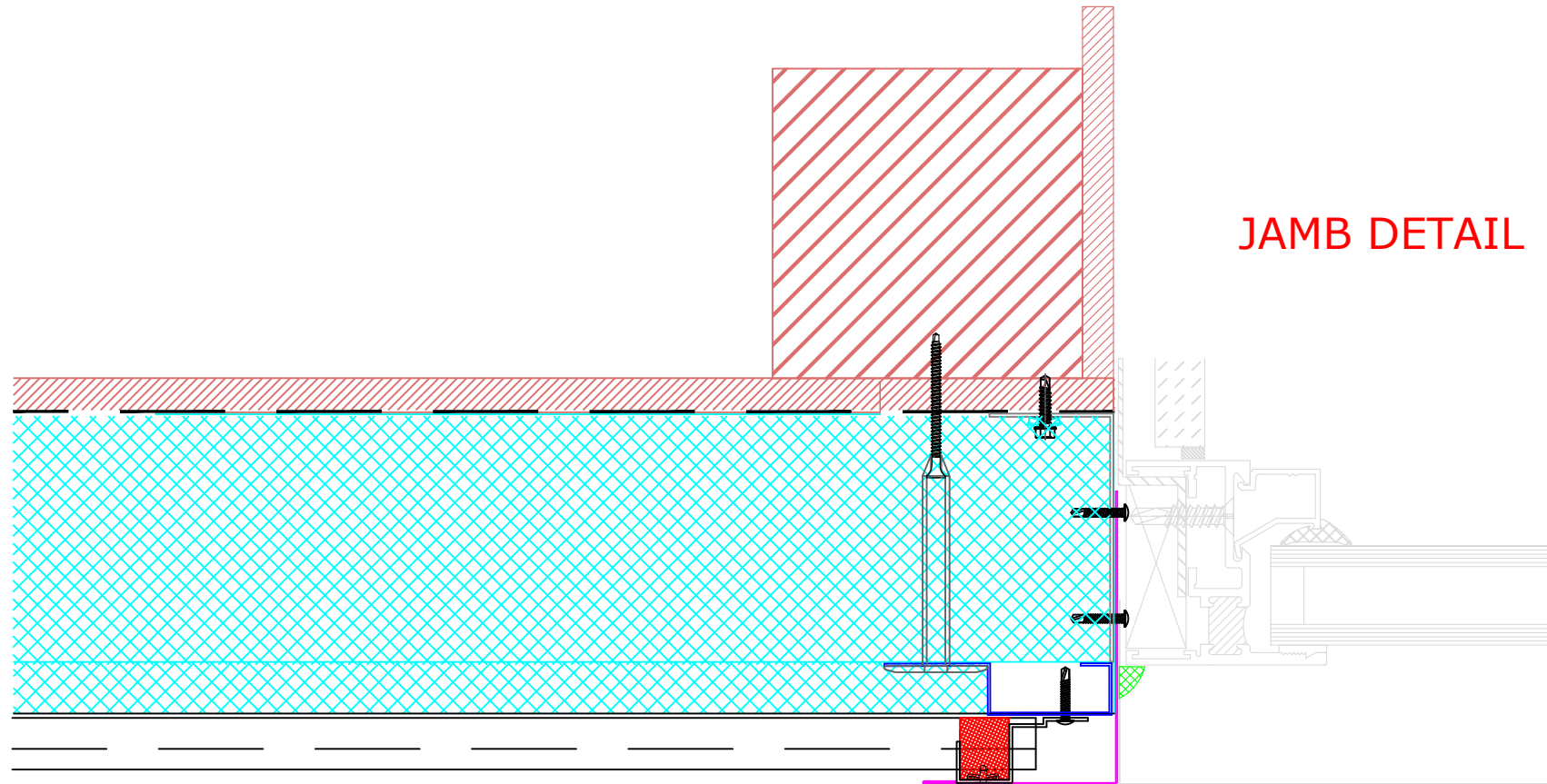
ISSUE DATE: Feb 2019

Drawn by: CD Checked by: MP

(To be read in conjunction with Vieo system specification documents)

**Euroclad Group Ltd,
Wentloog Corporate Park,
Wentloog Road, Cardiff CF3 2ER
Tel: +44 (0)2922 010101
Fax: +44 (0)2922 010122
Website: www.vieorooft.com**

This draft drawing has been supplied by Euro Clad Ltd for the purpose of guidance free of charge. It is a suggested typical detail and as such should not be assumed suitable for any specific project or application. No responsibility is assumed for errors or misinterpretations resulting from the information contained in the drawing. Details are for illustration only and no liability is accepted. We reserve the right to change the details without notice. The drawing is copyright, it remains our property.



Jamb flashing

Cill flashing



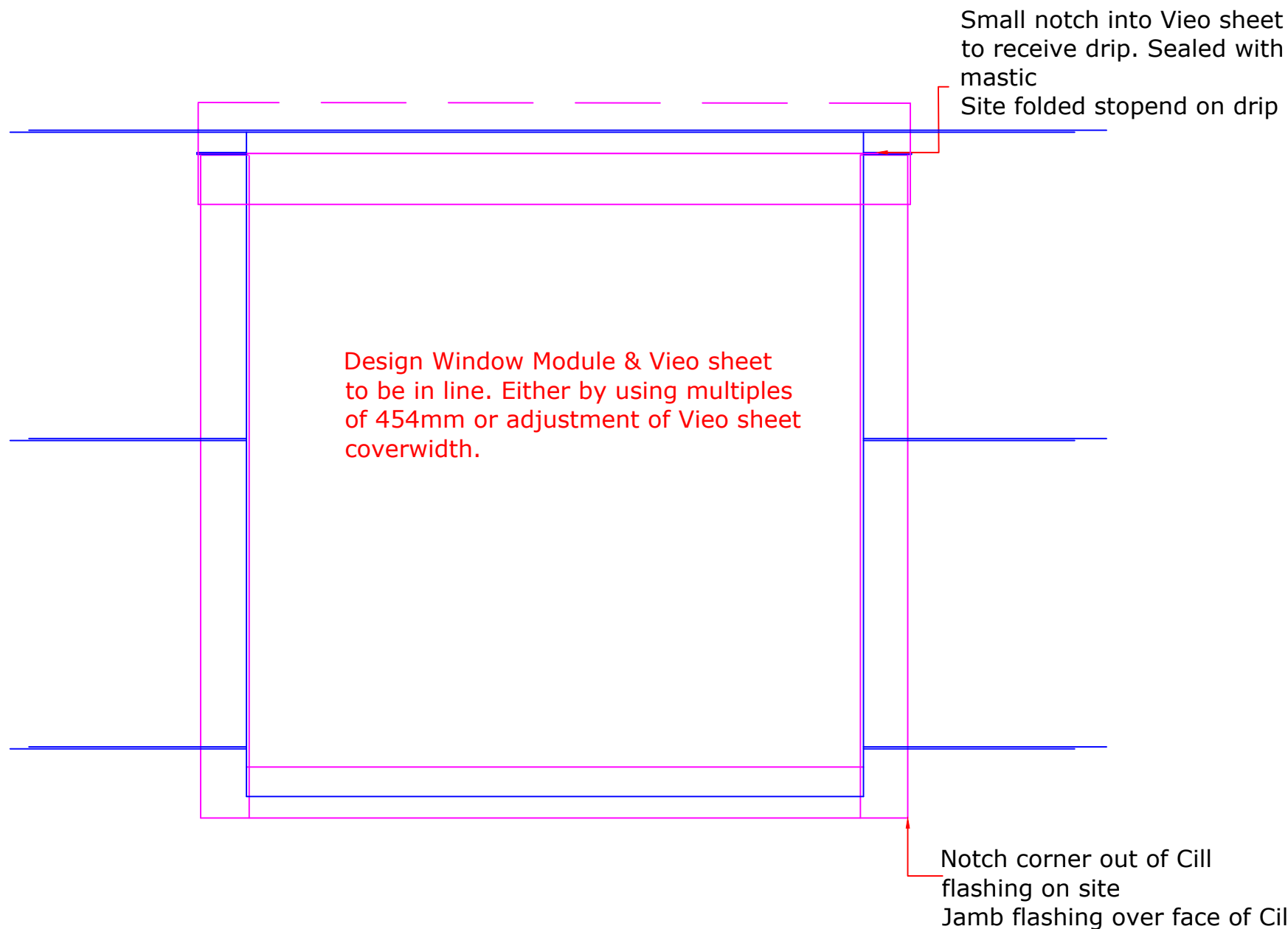
TITLE: Vieo Horizontal Warm Wall (On Ply or OSB)
DWG NO: V10_HWC_TD_System
SCALE: NTS
ISSUE DATE: Feb 2019

Drawn by: CD Checked by: MP

(To be read in conjunction with Vieo system specification documents)

**Euroclad Group Ltd,
Wentloog Corporate Park,
Wentloog Road, Cardiff CF3 2ER
Tel: +44 (0)2922 010101
Fax: +44 (0)2922 010122
Website: www.vieorooft.com**

This draft drawing has been supplied by Euro Clad Ltd for the purpose of guidance free of charge. It is a suggested typical detail and as such should not be assumed suitable for any specific project or application. No responsibility is assumed for errors or misinterpretations resulting from the information contained in the drawing. Details are for illustration only and no liability is accepted. We reserve the right to change the details without notice. The drawing is copyright, it remains our property.





TITLE: Vieo Horizontal Warm Wall (On Ply or OSB)

DWG NO: V10_HWC_TD_System

SCALE: NTS

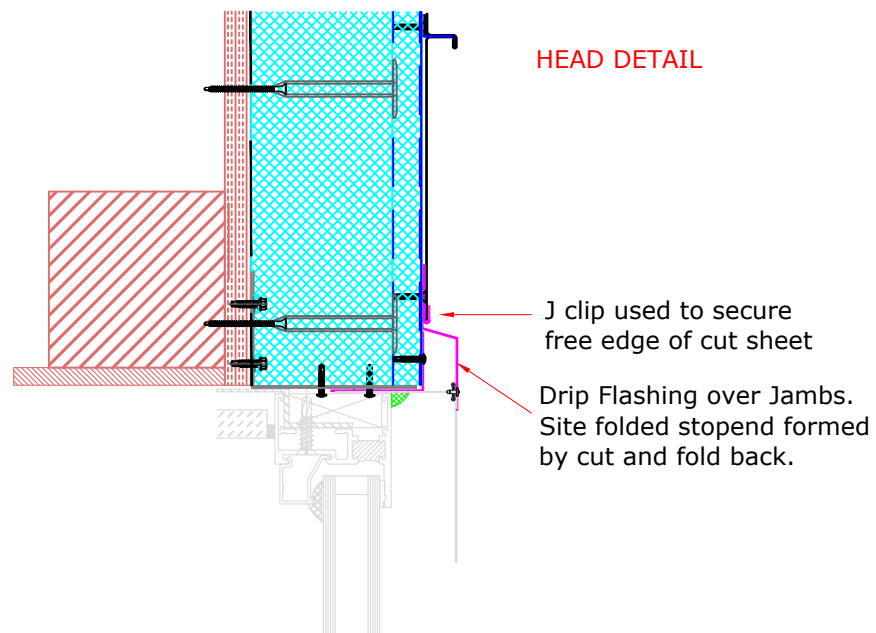
ISSUE DATE: Feb 2019

Drawn by: CD Checked by: MP

(To be read in conjunction with Vieo system specification documents)

**Euroclad Group Ltd,
Wentloog Corporate Park,
Wentloog Road, Cardiff CF3 2ER
Tel: +44 (0)2922 010101
Fax: +44 (0)2922 010122
Website: www.vieorooft.com**

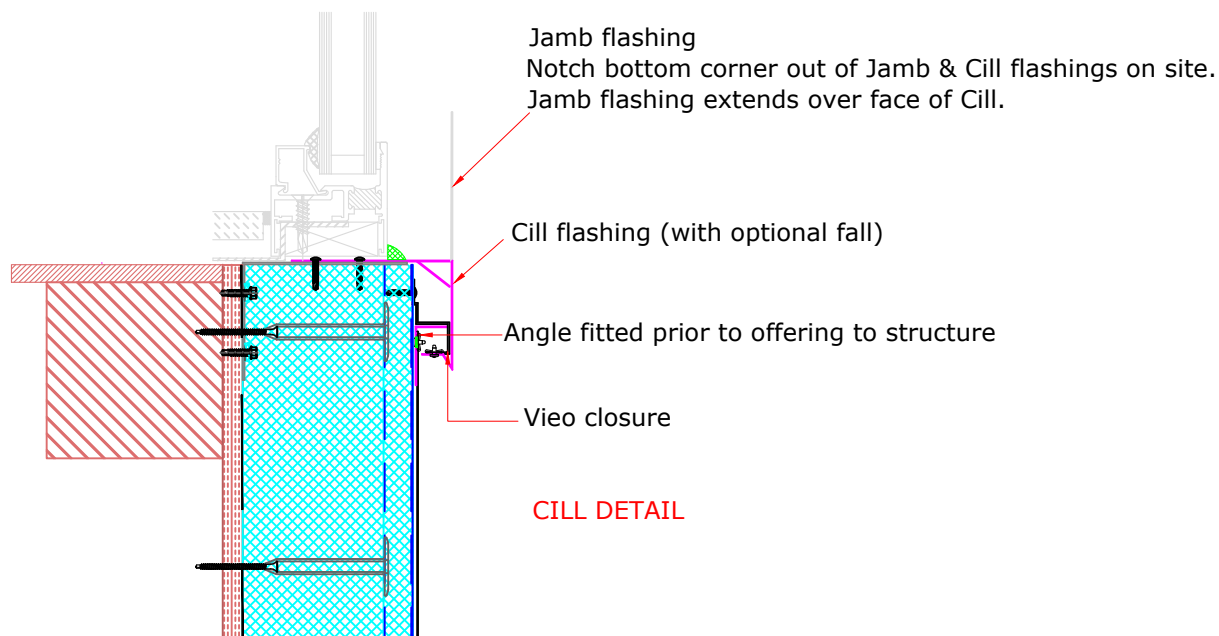
This draft drawing has been supplied by Euro Clad Ltd for the purpose of guidance free of charge. It is a suggested typical detail and as such should not be assumed suitable for any specific project or application. No responsibility is assumed for errors or misinterpretations resulting from the information contained in the drawing. Details are for illustration only and no liability is accepted. We reserve the right to change the details without notice. The drawing is copyright, it remains our property.



HEAD DETAIL

J clip used to secure
free edge of cut sheet

Drip Flashing over Jamb.
Site folded stop end formed
by cut and fold back.



Jamb flashing
Notch bottom corner out of Jamb & Cill flashings on site.
Jamb flashing extends over face of Cill.

Cill flashing (with optional fall)

Angle fitted prior to offering to structure

Vieo closure

CILL DETAIL



TITLE: Vieo Horizontal Warm Wall (On Ply or OSB)

DWG NO: V10_HWC_TD_System

SCALE: NTS

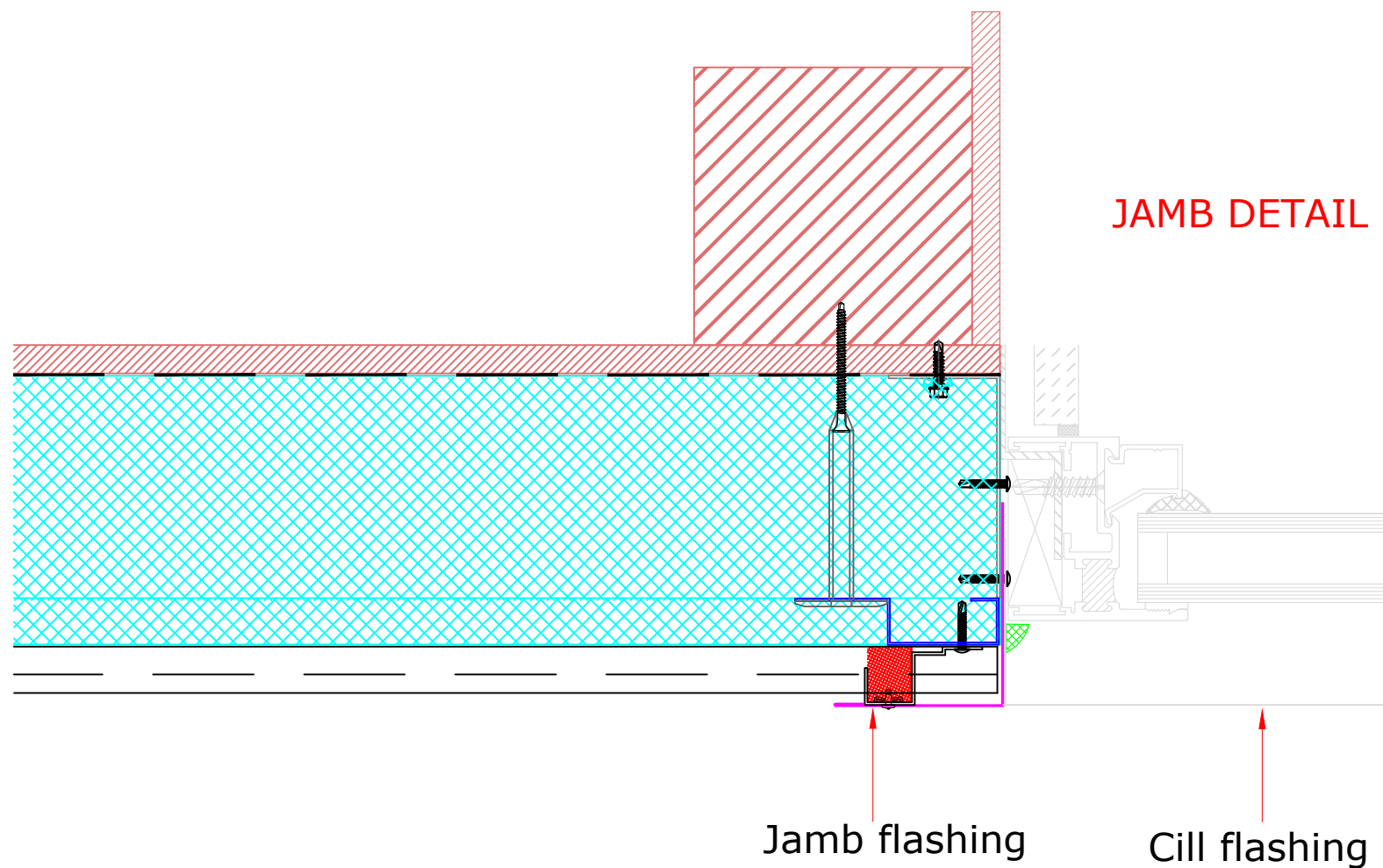
ISSUE DATE: Feb 2019

Drawn by: CD Checked by: MP

(To be read in conjunction with Vieo system specification documents)

**Euroclad Group Ltd,
Wentloog Corporate Park,
Wentloog Road, Cardiff CF3 2ER
Tel: +44 (0)2922 010101
Fax: +44 (0)2922 010122
Website: www.vieorooft.com**

This draft drawing has been supplied by Euro Clad Ltd for the purpose of guidance free of charge. It is a suggested typical detail and as such should not be assumed suitable for any specific project or application. No responsibility is assumed for errors or misinterpretations resulting from the information contained in the drawing. Details are for illustration only and no liability is accepted. We reserve the right to change the details without notice. The drawing is copyright, it remains our property.





TITLE: Vieo Horizontal Warm Wall (On Ply or OSB)

DWG NO: V10_HWC_TD_System

SCALE: NTS

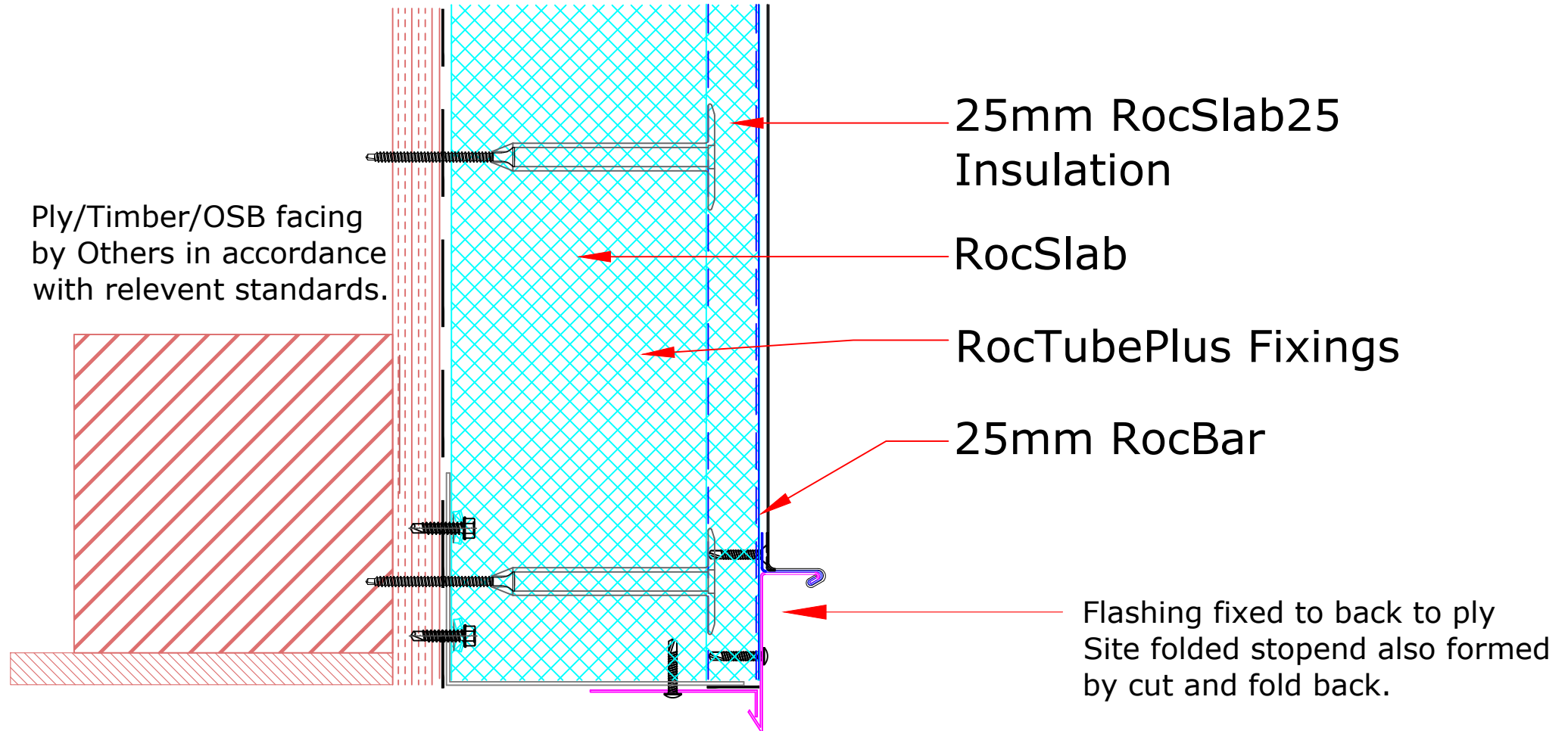
ISSUE DATE: Feb 2019

Drawn by: CD Checked by: MP

(To be read in conjunction with Vieo system specification documents)

**Euroclad Group Ltd,
Wentloog Corporate Park,
Wentloog Road, Cardiff CF3 2ER
Tel: +44 (0)2922 010101
Fax: +44 (0)2922 010122
Website: www.vieorooft.com**

This draft drawing has been supplied by Euro Clad Ltd for the purpose of guidance free of charge. It is a suggested typical detail and as such should not be assumed suitable for any specific project or application. No responsibility is assumed for errors or misinterpretations resulting from the information contained in the drawing. Details are for illustration only and no liability is accepted. We reserve the right to change the details without notice. The drawing is copyright, it remains our property.





TITLE: Vieo Horizontal Warm Wall (On Ply or OSB)

DWG NO: V10_HWC_TD_System

SCALE: NTS

ISSUE DATE: Feb 2019

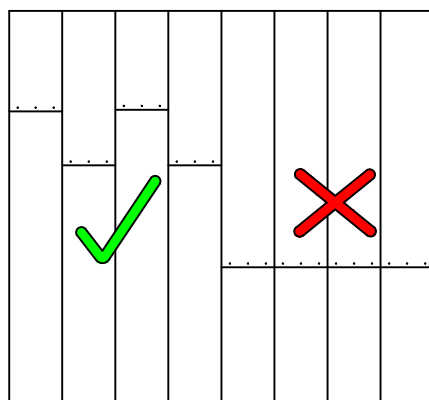
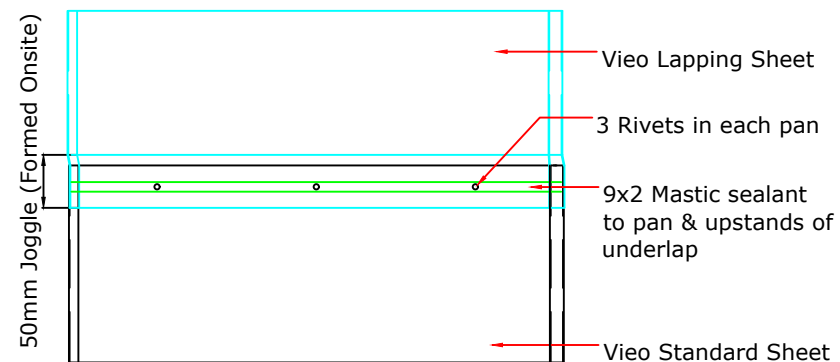
Drawn by: CD Checked by: MP

(To be read in conjunction with Vieo system specification documents)

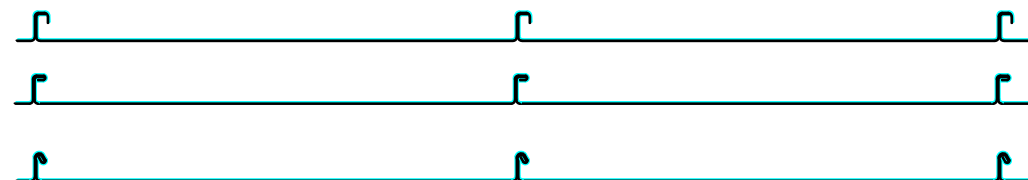
**Euroclad Group Ltd,
Wentloog Corporate Park,
Wentloog Road, Cardiff CF3 2ER
Tel: +44 (0)2922 010101
Fax: +44 (0)2922 010122
Website: www.vieorooft.com**

This draft drawing has been supplied by Euro Clad Ltd for the purpose of guidance free of charge. It is a suggested typical detail and as such should not be assumed suitable for any specific project or application. No responsibility is assumed for errors or misinterpretations resulting from the information contained in the drawing. Details are for illustration only and no liability is accepted. We reserve the right to change the details without notice. The drawing is copyright, it remains our property.

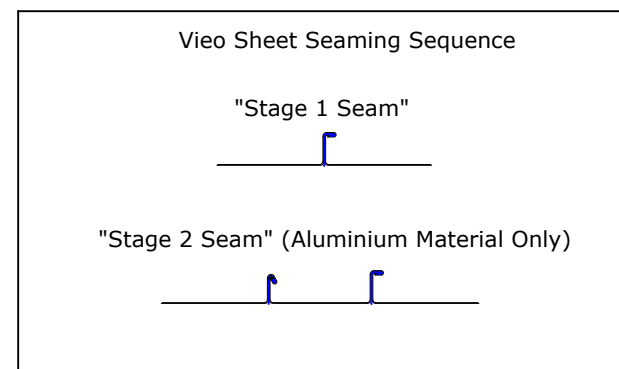
For advice on fixed point locations please contact Euroclad Technical



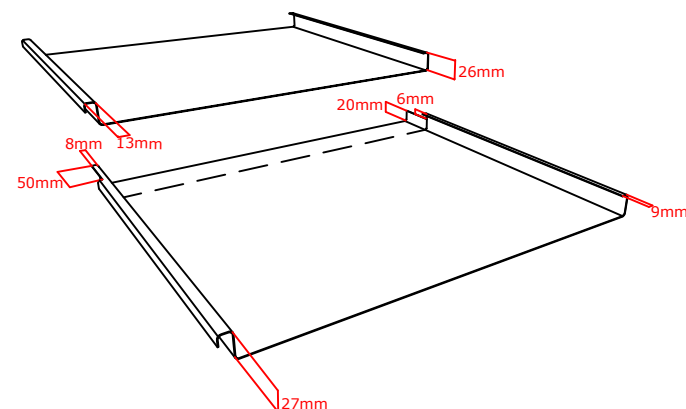
Lap joints must be staggered at least 100mm apart
Clips minimum 100mm from joint



SEAMING OPTIONS AT END LAP



Vieo Sheets cut on site prior to jointing





TITLE: Vieo Horizontal Warm Wall (On Ply or OSB)

DWG NO: V10_HWC_TD_System

SCALE: NTS

ISSUE DATE: Feb 2019

Drawn by: CD Checked by: MP

(To be read in conjunction with Vieo system specification documents)

**Euroclad Group Ltd,
Wentloog Corporate Park,
Wentloog Road, Cardiff CF3 2ER
Tel: +44 (0)2922 010101
Fax: +44 (0)2922 010122
Website: www.vieorooft.com**

This draft drawing has been supplied by Euro Clad Ltd for the purpose of guidance free of charge. It is a suggested typical detail and as such should not be assumed suitable for any specific project or application. No responsibility is assumed for errors or misinterpretations resulting from the information contained in the drawing. Details are for illustration only and no liability is accepted. We reserve the right to change the details without notice. The drawing is copyright, it remains our property.

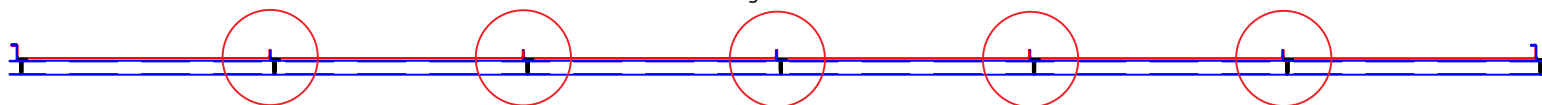
STEP 1

Damaged sheets in red



STEP 2

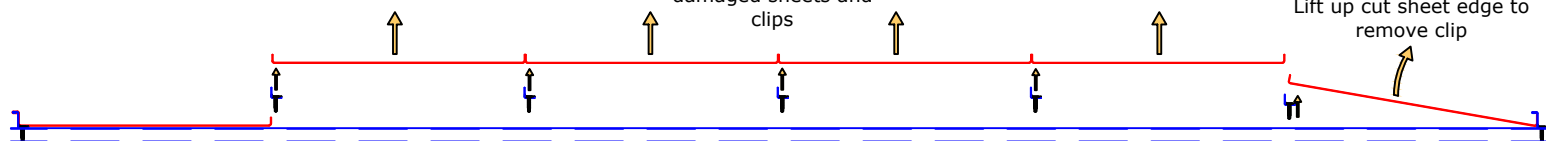
Cut off upstands of damaged sheets



STEP 3

Remove the central damaged sheets and clips

Lift up cut sheet edge to remove clip



STEP 4

Apply touch up paint to cut edge.

Apply an adhesive to bond the single upstand sheet to the damaged sheet.

Single upstand sheets

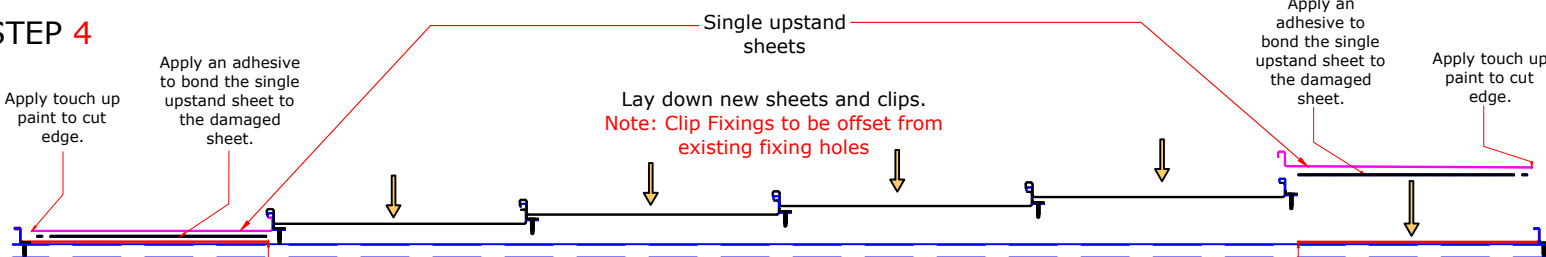
Lay down new sheets and clips.
Note: Clip Fixings to be offset from existing fixing holes

Apply an adhesive to bond the single upstand sheet to the damaged sheet.

Apply touch up paint to cut edge.

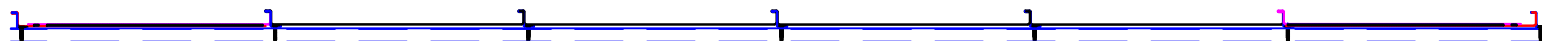
Damaged sheet cut back from cut off upstand to provide a flat bonding surface.

Damaged sheet cut back from cut off upstand to provide a flat bonding surface.

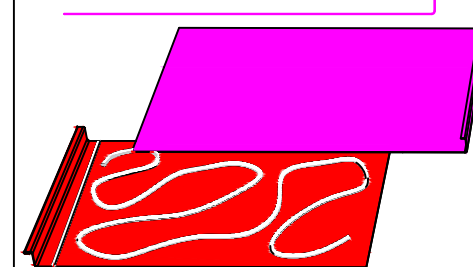


STEP 5

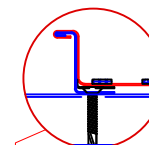
New sheets in place



Single upstand sheet should be manufactured narrower than what was originally ordered to allow for creep of new sheets.



Continuous run of adhesive set back by 10-15mm from sheet edge to be of consistent bead size.



Pressure should be applied to achieve a bond and seal along sheet length. Use sealed rivets if necessary.