



**TITLE: Vieo Vertical Warm Wall (On Ply or OSB)**

**DWG NO: V13\_VW\_T\_System**

**SCALE: NTS**

**ISSUE DATE: Feb 2019**

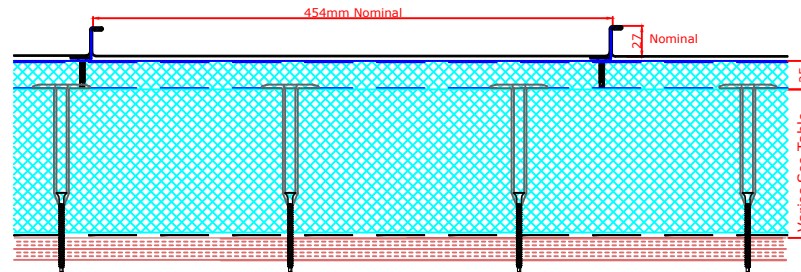
Drawn by: CD Checked by: MP

(To be read in conjunction with Vieo system specification documents)

**Euroclad Group Ltd,  
Wentloog Corporate Park,  
Wentloog Road, Cardiff CF3 2ER  
Tel: +44 (0)2922 010101  
Fax: +44 (0)2922 010122  
Website: [www.vieorooft.com](http://www.vieorooft.com)**

This draft drawing has been supplied by Euro Clad Ltd for the purpose of guidance free of charge. It is a suggested typical detail and as such should not be assumed suitable for any specific project or application. No responsibility is assumed for errors or misinterpretations resulting from the information contained in the drawing. Details are for illustration only and no liability is accepted. We reserve the right to change the details without notice. The drawing is copyright, it remains our property.

Standard offer is 454mm profile.  
Also available on request in other widths from 200mm to 517mm.  
Above 454mm is not Technically supported.



<b>U Value</b>	<b>0.25</b>	<b>0.20</b>	<b>0.18</b>	<b>0.15</b>
<b>Insulation Depth</b> (Excluding 25mm upper slab)	115mm	150mm	170mm	205mm
<b>Overall System Depth</b> (Excluding Timber Substrate)	169mm	204mm	224mm	259mm
<b>System Weight / M<sup>2</sup></b>				
<b>Steel</b> 0.7mm (Excluding Timber Substrate)	23.28 kg/m <sup>2</sup>	24.90 kg/m <sup>2</sup>	27.00 kg/m <sup>2</sup>	30.68 kg/m <sup>2</sup>
<b>System Weight / M<sup>2</sup></b>				
<b>Aluminium</b> 0.9mm (Excluding Timber Substrate)	17.74 kg/m <sup>2</sup>	21.41 kg/m <sup>2</sup>	23.51 kg/m <sup>2</sup>	27.19 kg/m <sup>2</sup>

<b>U Value (RocSlab Lite)</b>	<b>0.25</b>	<b>0.17</b>	<b>0.15</b>	<b>0.13</b>	<b>0.11</b>
<b>Insulation Depth</b> (Excluding 25mm upper slab)	90mm	130mm	150mm	180mm	200mm
<b>Overall System Depth</b> (Excluding Timber Substrate)	144mm	184mm	204mm	234mm	254mm
<b>System Weight / M<sup>2</sup></b>					
<b>Steel</b> 0.7mm (Excluding Timber Substrate)	18.96 kg/m <sup>2</sup>	20.24 kg/m <sup>2</sup>	20.88 kg/m <sup>2</sup>	21.84 kg/m <sup>2</sup>	22.48 kg/m <sup>2</sup>
<b>System Weight / M<sup>2</sup></b>					
<b>Aluminium</b> 0.9mm (Excluding Timber Substrate)	15.47 kg/m <sup>2</sup>	16.75 kg/m <sup>2</sup>	17.39 kg/m <sup>2</sup>	18.35 kg/m <sup>2</sup>	18.99 kg/m <sup>2</sup>

RocSlab Lite is a combination of PIR and Rock Fibre insulation



**TITLE: Vieo Vertical Warm Wall (On Ply or OSB)**

**DWG NO: V13\_VW\_T\_System**

**SCALE: NTS**

**ISSUE DATE: Feb 2019**

Drawn by: CD Checked by: MP

(To be read in conjunction with Vieo system specification documents)

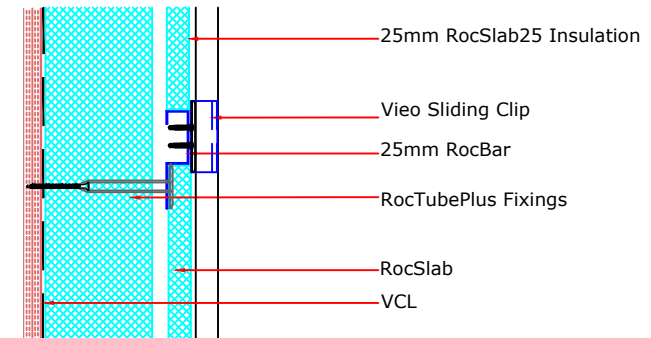
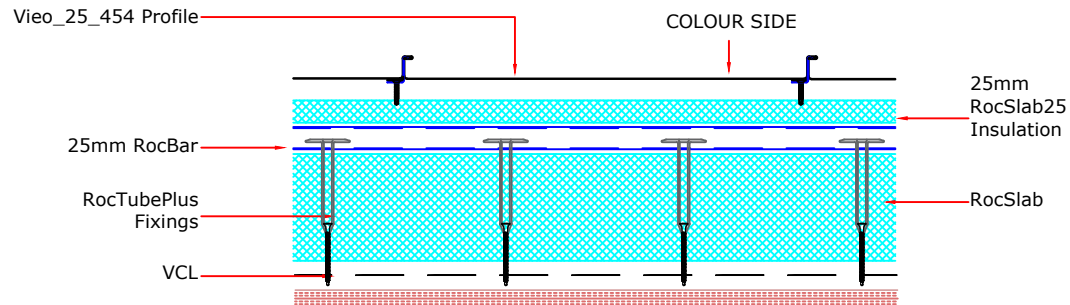
**Euroclad Group Ltd,  
Wentloog Corporate Park,  
Wentloog Road, Cardiff CF3 2ER  
Tel: +44 (0)2922 010101  
Fax: +44 (0)2922 010122  
Website: [www.vieoroof.com](http://www.vieoroof.com)**

This draft drawing has been supplied by Euro Clad Ltd for the purpose of guidance free of charge. It is a suggested typical detail and as such should not be assumed suitable for any specific project or application. No responsibility is assumed for errors or misinterpretations resulting from the information contained in the drawing. Details are for illustration only and no liability is accepted. We reserve the right to change the details without notice. The drawing is copyright, it remains our property.

## EUROCLAD VIEO WARM WALL (ON PLY OR OSB)

**Please Note:**

WT75 Self Adhesive Barrier Tape must be used on Rocbar when aluminium Vieo is being used.



### Vieo Sheet Seaming Sequence

#### "Stage 1 Seam"



#### "Stage 2 Seam" (Aluminium Material Only)





**TITLE: Vieo Vertical Warm Wall (On Ply or OSB)**

**DWG NO: V13\_VW\_T\_System**

**SCALE: NTS**

**ISSUE DATE: Feb 2019**

Drawn by: CD Checked by: MP

(To be read in conjunction with Vieo system specification documents)

**Euroclad Group Ltd,  
Wentloog Corporate Park,  
Wentloog Road, Cardiff CF3 2ER  
Tel: +44 (0)2922 010101  
Fax: +44 (0)2922 010122  
Website: [www.vieoroof.com](http://www.vieoroof.com)**

This draft drawing has been supplied by Euro Clad Ltd for the purpose of guidance free of charge. It is a suggested typical detail and as such should not be assumed suitable for any specific project or application. No responsibility is assumed for errors or misinterpretations resulting from the information contained in the drawing. Details are for illustration only and no liability is accepted. We reserve the right to change the details without notice. The drawing is copyright, it remains our property.

**TYPICAL ARRANGEMENT: 1260mm IN CENTRAL AREAS,  
REDUCE CLIP CENTRES AT PERIMETERS AND IN HIGH LOAD AREAS.**

**CHECK SYSTEM CAPACITY AGAINST PROJECT LOADS AND ADJUST IF NECESSARY**

**CLIP/ROCBAR TYPICAL CENTRES (APPLICABLE FOR STAGE 1 ALUMINIUM  
VIEO SHEETS ONLY):**

**DETERMINED BY PROJECT WIND SUCTION LOADS AS FOLLOWS:**

**1260mm for loads up to 0.8kN/M<sup>2</sup>**

**660mm for loads 0.8 to 1.2kN/M<sup>2</sup>**

**300mm for loads 1.2 to 3kN/M<sup>2</sup>**

**Where substrate is Min 18mm ply or Min 15mm OSB 3**

**IF HIGHER WIND LOADS ARE ANTICIPATED PLEASE REFER TO BELOW;**

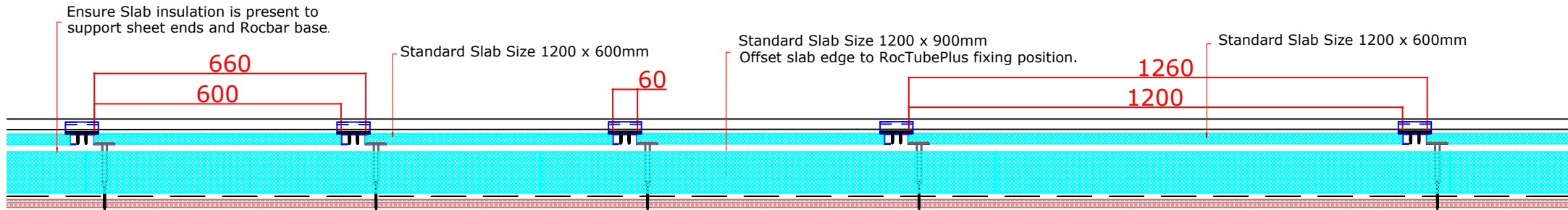
**CLIP/ROCBAR TYPICAL CENTRES (APPLICABLE FOR STAGE 2 ALUMINIUM  
VIEO SHEETS AND STAGE 1 STEEL VIEO SHEETS):**

**1260mm for loads up to 1.5kN/M<sup>2</sup>**

**660mm for loads 1.5 to 2.0kN/M<sup>2</sup>**

**300mm for loads 2 to 4kN/M<sup>2</sup>**

**Where substrate is Min 18mm ply or Min 15mm OSB 3**



**WHERE OFFCUTS ARE USED:**

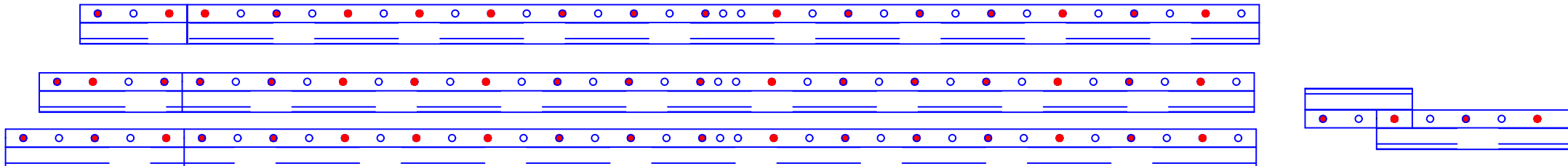
**A MINIMUM HOLE TO CUT EDGE DISTANCE OF 50MM IS REQUIRED.**

**MAXIMUM 200MM FIXING CENTRES MUST BE MAINTAINED & EACH  
OFFCUT MUST HAVE A FIXING IN EACH END HOLE.**

**THE MINIMUM OFFCUT ALLOWABLE IS 300mm LONG WITH A FIXING IN EACH END.**

**IF A SHORTER LENGTH THEN 300mm IS REQUIRED, ROTATE THE RAIL AND LAP BACK.**

**STANDARD FIXINGS PATTERN: AT MAXIMUM 200mm CENTRES (15 FIXINGS PER 3M ROCBAR)**





**TITLE: Vieo Vertical Warm Wall (On Ply or OSB)**

**DWG NO: V13\_VW\_T\_System**

**SCALE: NTS**

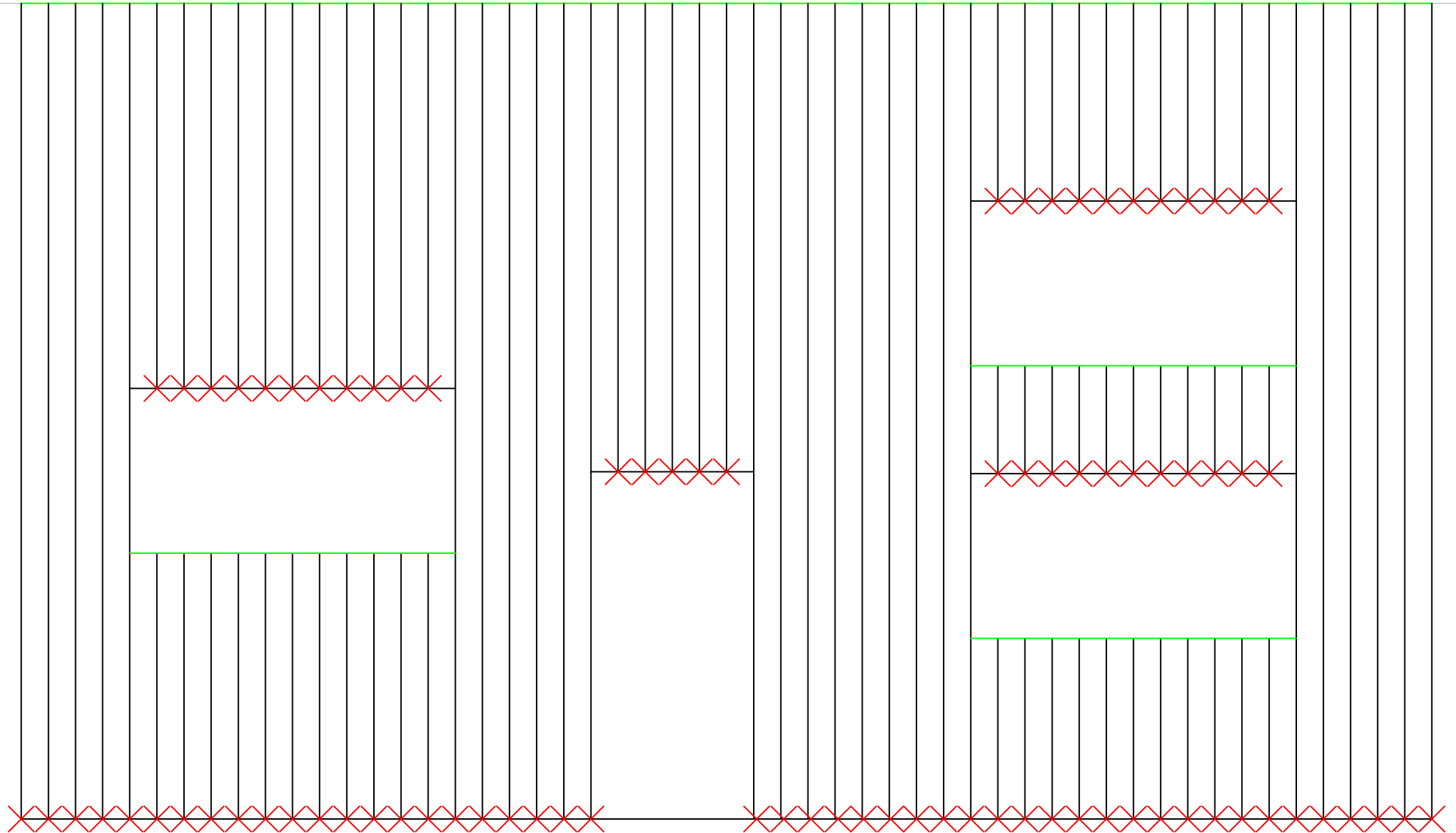
**ISSUE DATE: Feb 2019**

Drawn by: CD Checked by: MP

(To be read in conjunction with Vieo system specification documents)

**Euroclad Group Ltd,  
Wentloog Corporate Park,  
Wentloog Road, Cardiff CF3 2ER  
Tel: +44 (0)2922 010101  
Fax: +44 (0)2922 010122  
Website: [www.vieorooft.com](http://www.vieorooft.com)**

This draft drawing has been supplied by Euro Clad Ltd for the purpose of guidance free of charge. It is a suggested typical detail and as such should not be assumed suitable for any specific project or application. No responsibility is assumed for errors or misinterpretations resulting from the information contained in the drawing. Details are for illustration only and no liability is accepted. We reserve the right to change the details without notice. The drawing is copyright, it remains our property.



× Fixed Point — Expansion allowance under flashing



**TITLE: Vieo Vertical Warm Wall (On Ply or OSB)**

**DWG NO: V13\_VW\_T\_System**

**SCALE: NTS**

**ISSUE DATE: Feb 2019**

Drawn by: CD Checked by: MP

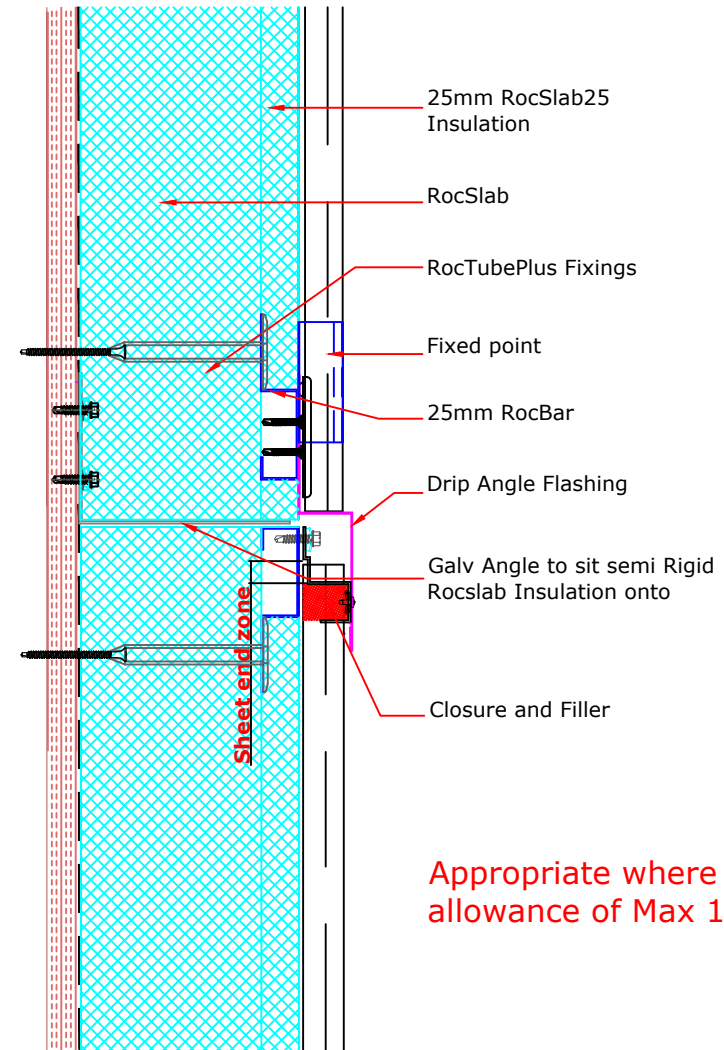
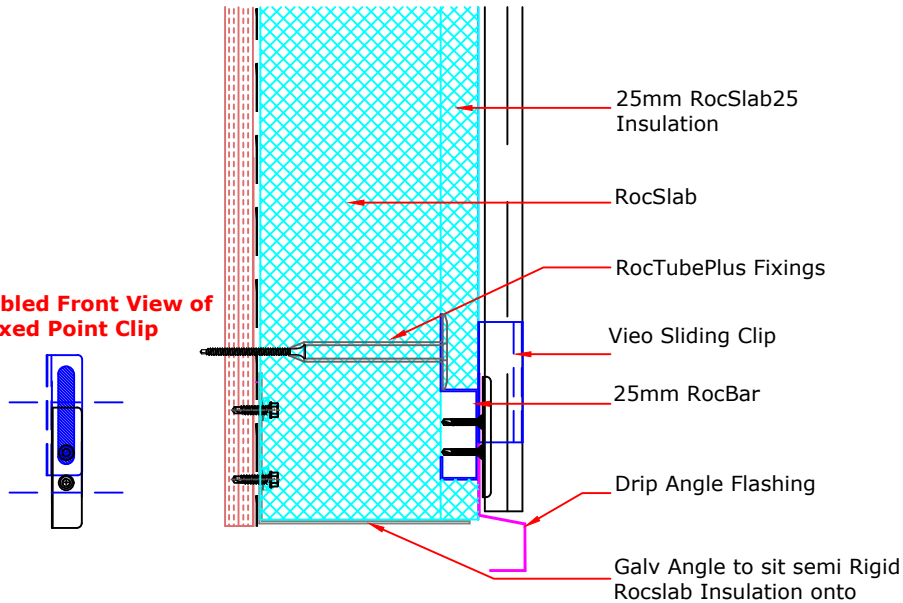
(To be read in conjunction with Vieo system specification documents)

**Euroclad Group Ltd,  
Wentloog Corporate Park,  
Wentloog Road, Cardiff CF3 2ER  
Tel: +44 (0)2922 010101  
Fax: +44 (0)2922 010122  
Website: [www.vieorooft.com](http://www.vieorooft.com)**

This draft drawing has been supplied by Euro Clad Ltd for the purpose of guidance free of charge. It is a suggested typical detail and as such should not be assumed suitable for any specific project or application. No responsibility is assumed for errors or misinterpretations resulting from the information contained in the drawing. Details are for illustration only and no liability is accepted. We reserve the right to change the details without notice. The drawing is copyright, it remains our property.

**Create Fixed Point Using Clip with Additional Fixing,  
Typically positioned over drip angle at sheet base.**

**Assembled Front View of  
Fixed Point Clip**



**Appropriate where expansion  
allowance of Max 10mm required**



**TITLE: Vieo Vertical Warm Wall (On Ply or OSB)**

**DWG NO: V13\_VW\_T\_System**

**SCALE: NTS**

**ISSUE DATE: Feb 2019**

Drawn by: CD Checked by: MP

(To be read in conjunction with Vieo system specification documents)

**Euroclad Group Ltd,  
Wentloog Corporate Park,  
Wentloog Road, Cardiff CF3 2ER  
Tel: +44 (0)2922 010101  
Fax: +44 (0)2922 010122  
Website: [www.vieorooft.com](http://www.vieorooft.com)**

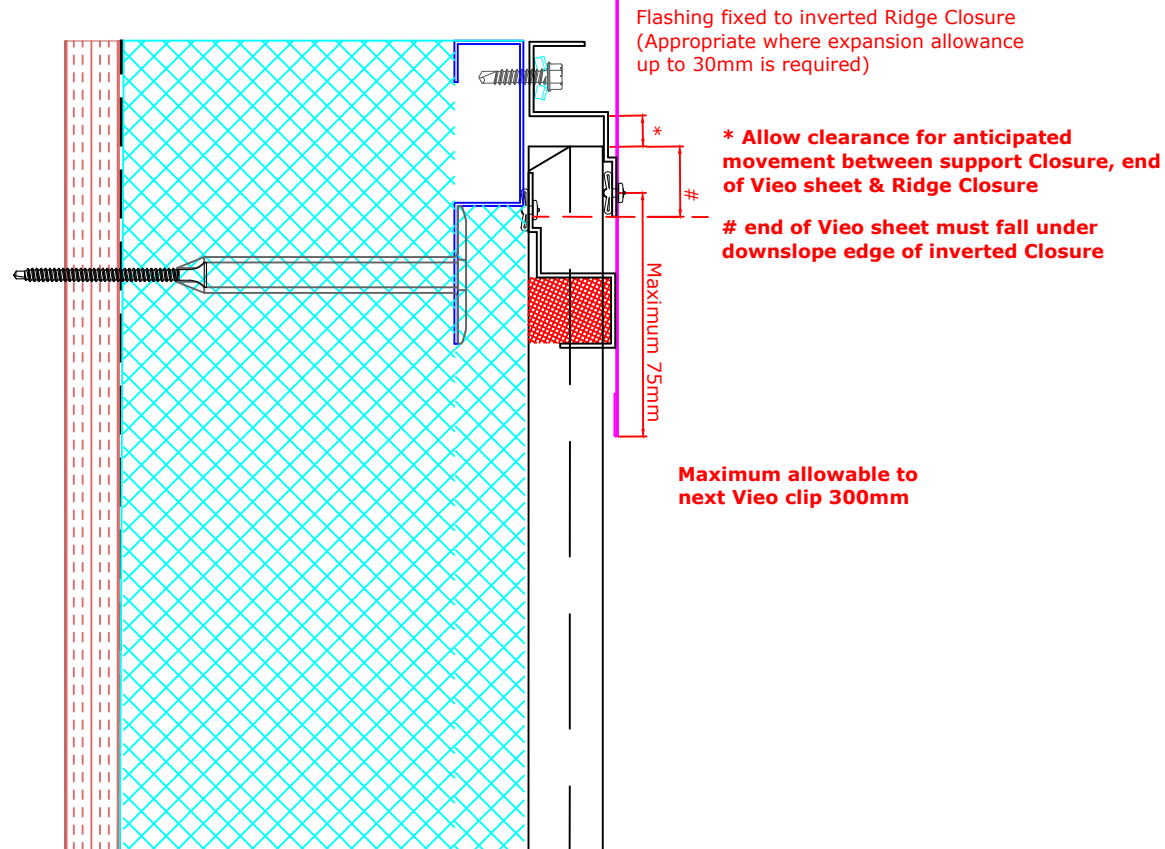
This draft drawing has been supplied by Euro Clad Ltd for the purpose of guidance free of charge. It is a suggested typical detail and as such should not be assumed suitable for any specific project or application. No responsibility is assumed for errors or misinterpretations resulting from the information contained in the drawing. Details are for illustration only and no liability is accepted. We reserve the right to change the details without notice. The drawing is copyright, it remains our property.

**Movement typically allowed  
at top of sheet.**

**Closure with flashing fixed to  
decking and not through sheet.**

**Maximum allowable distance  
to next Vieo clip 300mm from  
closure fixing**

**Cover flashings fixed  
to structure and Vieo  
Closure**





**TITLE: Vieo Vertical Warm Wall (On Ply or OSB)**

**DWG NO: V13\_VW\_T\_System**

**SCALE: NTS**

**ISSUE DATE: Feb 2019**

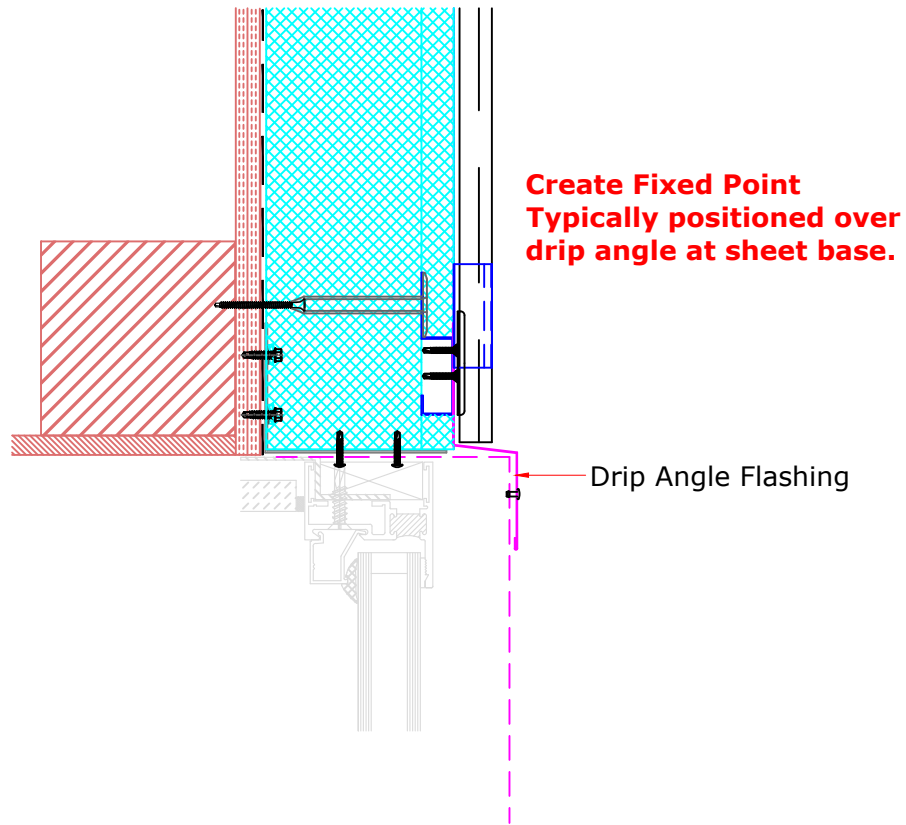
Drawn by: CD Checked by: MP

(To be read in conjunction with Vieo system specification documents)

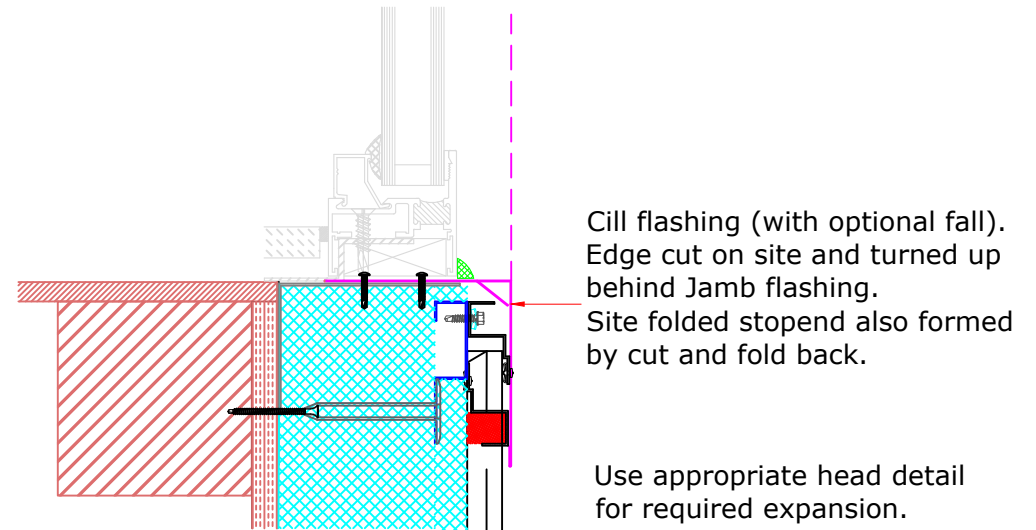
**Euroclad Group Ltd,  
Wentloog Corporate Park,  
Wentloog Road, Cardiff CF3 2ER  
Tel: +44 (0)2922 010101  
Fax: +44 (0)2922 010122  
Website: [www.vieorooft.com](http://www.vieorooft.com)**

This draft drawing has been supplied by Euro Clad Ltd for the purpose of guidance free of charge. It is a suggested typical detail and as such should not be assumed suitable for any specific project or application. No responsibility is assumed for errors or misinterpretations resulting from the information contained in the drawing. Details are for illustration only and no liability is accepted. We reserve the right to change the details without notice. The drawing is copyright, it remains our property.

### Head Detail



### Cill Detail





**TITLE: Vieo Vertical Warm Wall (On Ply or OSB)**

**DWG NO: V13\_VW\_T\_System**

**SCALE: NTS**

**ISSUE DATE: Feb 2019**

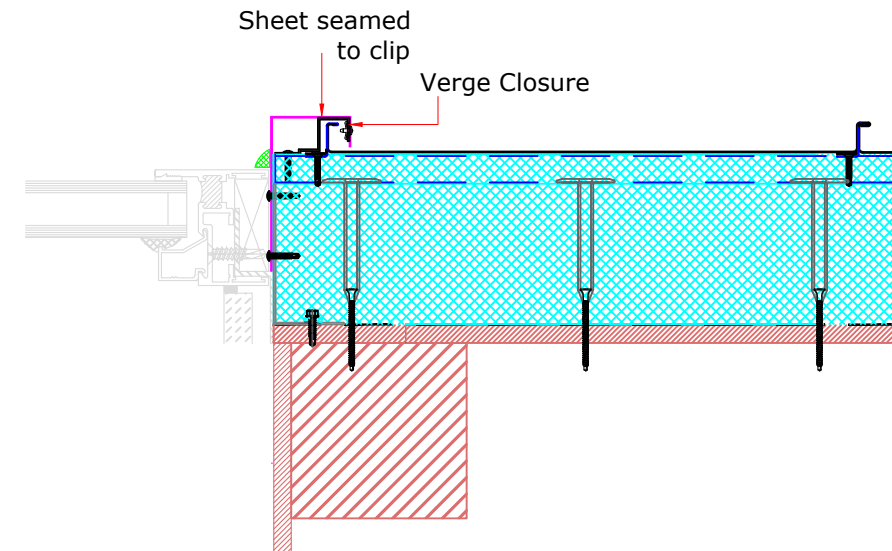
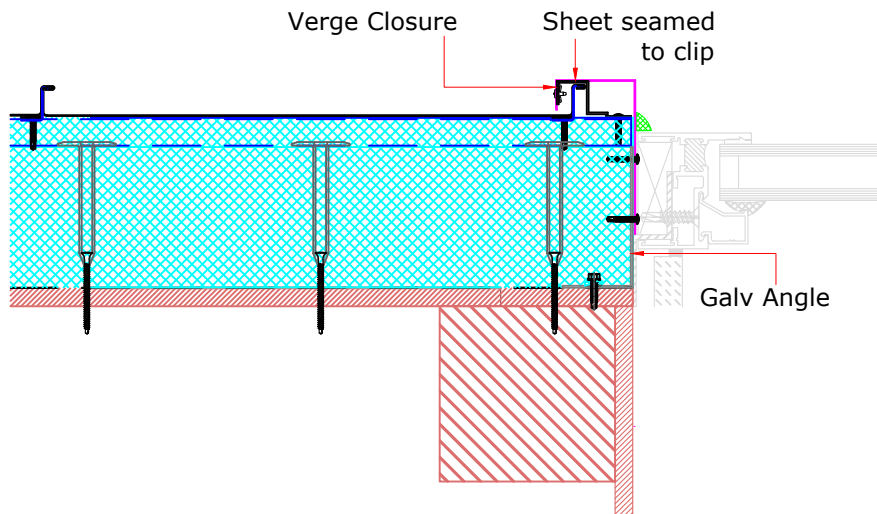
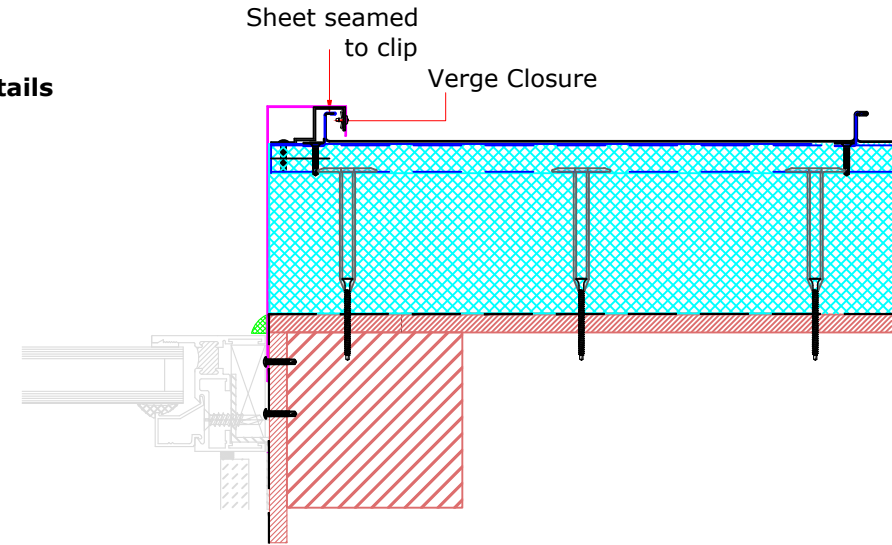
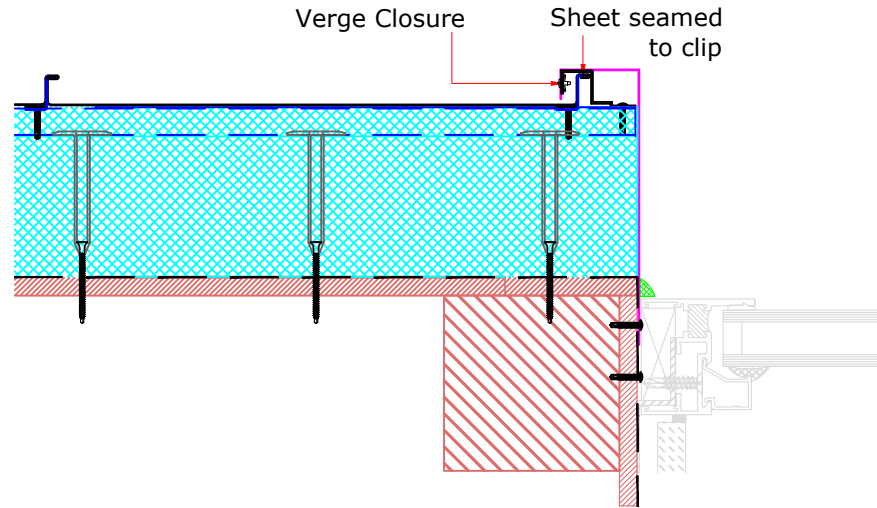
Drawn by: CD Checked by: MP

(To be read in conjunction with Vieo system specification documents)

**Euroclad Group Ltd,  
Wentloog Corporate Park,  
Wentloog Road, Cardiff CF3 2ER  
Tel: +44 (0)2922 010101  
Fax: +44 (0)2922 010122  
Website: [www.vieorooft.com](http://www.vieorooft.com)**

This draft drawing has been supplied by Euro Clad Ltd for the purpose of guidance free of charge. It is a suggested typical detail and as such should not be assumed suitable for any specific project or application. No responsibility is assumed for errors or misinterpretations resulting from the information contained in the drawing. Details are for illustration only and no liability is accepted. We reserve the right to change the details without notice. The drawing is copyright, it remains our property.

### Jamb Details







**TITLE: Vieo Vertical Warm Wall (On Ply or OSB)**

**DWG NO: V13\_VW\_T\_System**

**SCALE: NTS**

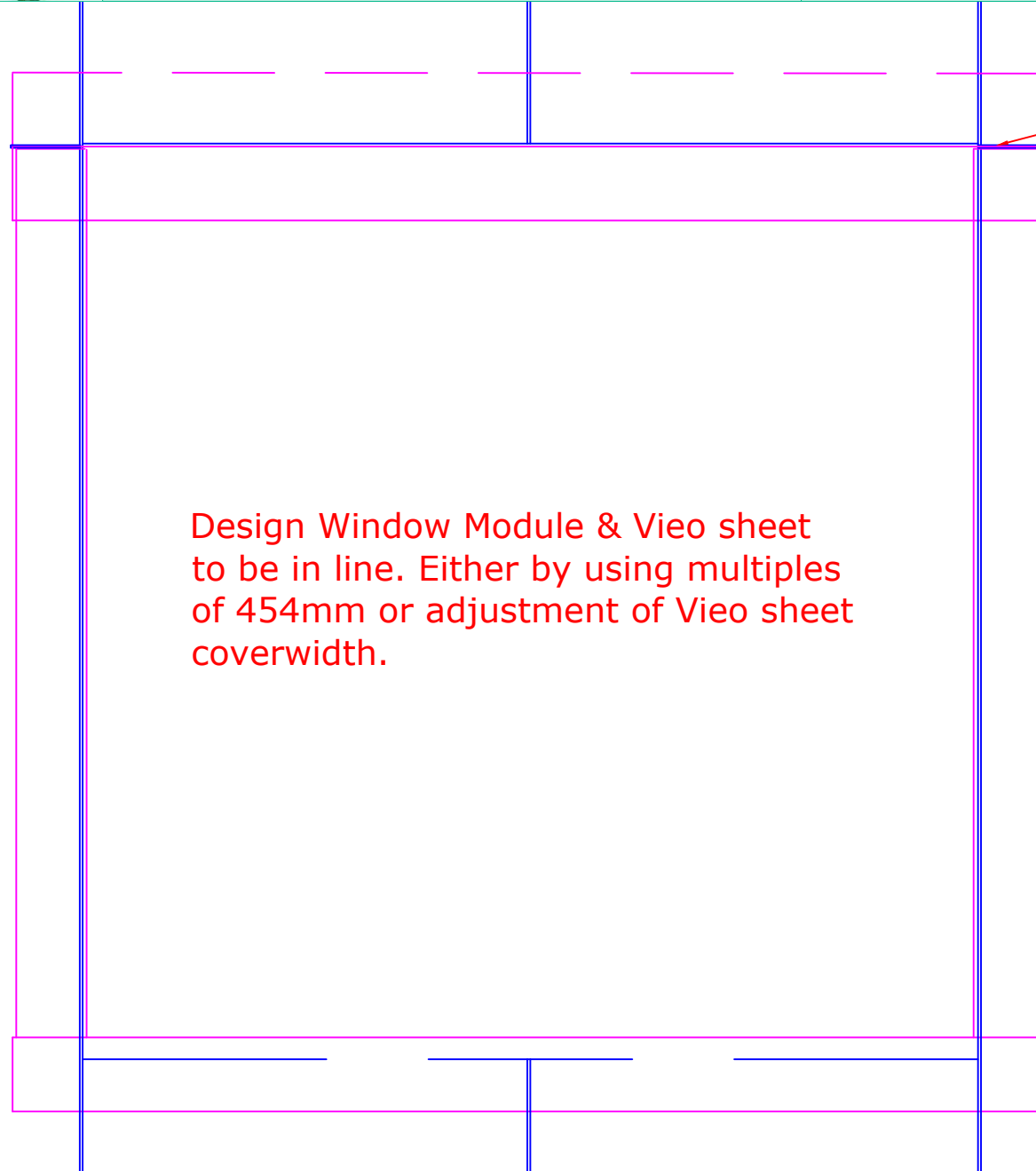
**ISSUE DATE: Feb 2019**

Drawn by: CD Checked by: MP

(To be read in conjunction with Vieo system specification documents)

**Euroclad Group Ltd,  
Wentloog Corporate Park,  
Wentloog Road, Cardiff CF3 2ER  
Tel: +44 (0)2922 010101  
Fax: +44 (0)2922 010122  
Website: [www.vieorooft.com](http://www.vieorooft.com)**

This draft drawing has been supplied by Euro Clad Ltd for the purpose of guidance free of charge. It is a suggested typical detail and as such should not be assumed suitable for any specific project or application. No responsibility is assumed for errors or misinterpretations resulting from the information contained in the drawing. Details are for illustration only and no liability is accepted. We reserve the right to change the details without notice. The drawing is copyright, it remains our property.



Small notch into Vieo sheet to receive drip. Sealed with mastic.

Site Folded stopend on drip

Design Window Module & Vieo sheet to be in line. Either by using multiples of 454mm or adjustment of Vieo sheet coverwidth.



**TITLE: Vieo Vertical Warm Wall (On Ply or OSB)**

**DWG NO: V13\_VW\_T\_System**

**SCALE: NTS**

**ISSUE DATE: Feb 2019**

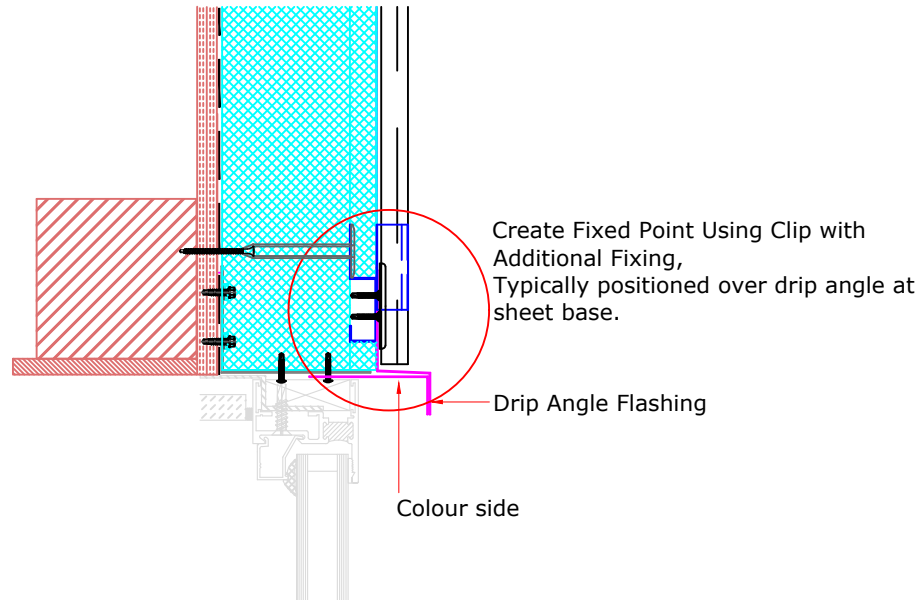
Drawn by: CD Checked by: MP

(To be read in conjunction with Vieo system specification documents)

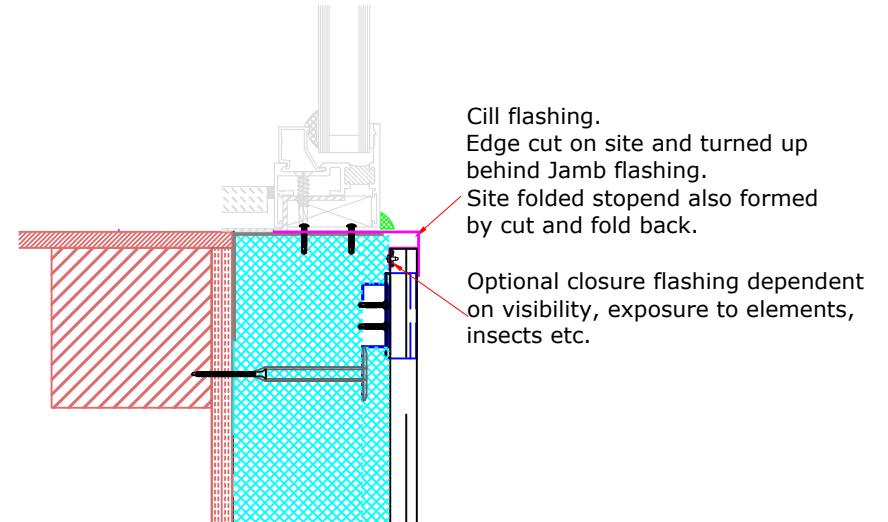
**Euroclad Group Ltd,  
Wentloog Corporate Park,  
Wentloog Road, Cardiff CF3 2ER  
Tel: +44 (0)2922 010101  
Fax: +44 (0)2922 010122  
Website: [www.vieoroof.com](http://www.vieoroof.com)**

This draft drawing has been supplied by Euro Clad Ltd for the purpose of guidance free of charge. It is a suggested typical detail and as such should not be assumed suitable for any specific project or application. No responsibility is assumed for errors or misinterpretations resulting from the information contained in the drawing. Details are for illustration only and no liability is accepted. We reserve the right to change the details without notice. The drawing is copyright, it remains our property.

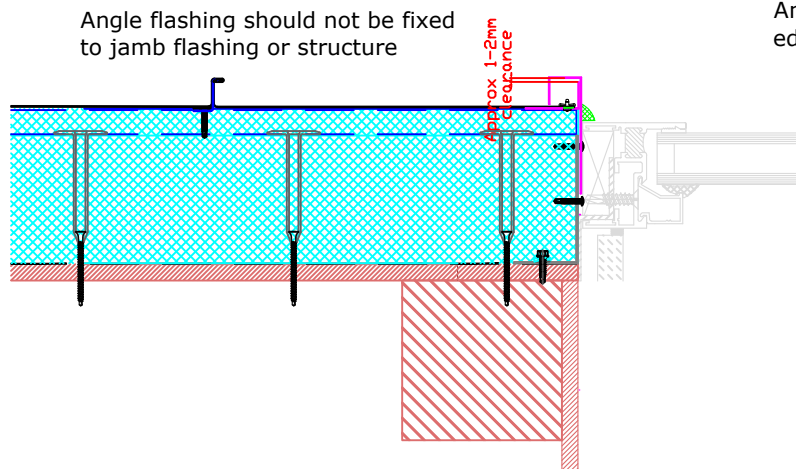
### Head Detail



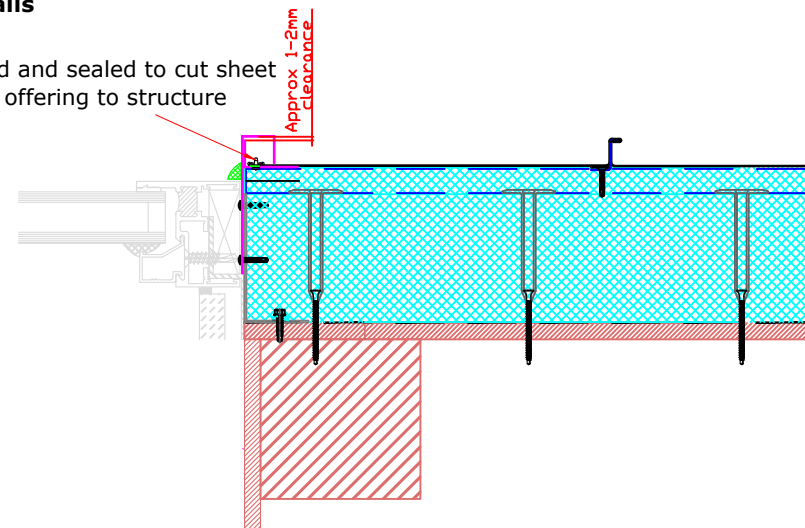
### Cill Detail



### Jamb Details



Angle rivetted and sealed to cut sheet edge prior to offering to structure





**TITLE: Vieo Vertical Warm Wall (On Ply or OSB)**

**DWG NO: V13\_VW\_T\_System**

**SCALE: NTS**

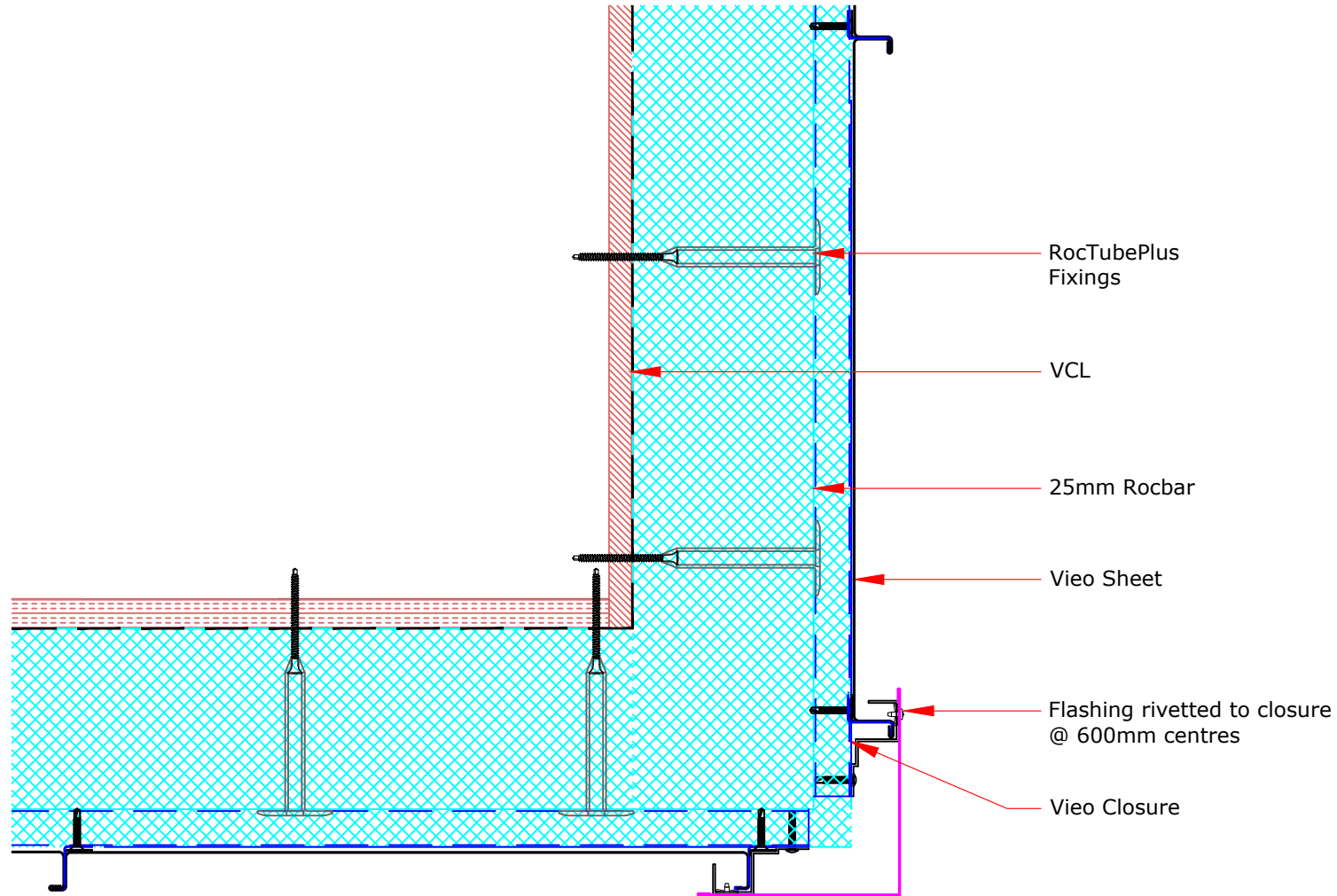
**ISSUE DATE: Feb 2019**

Drawn by: CD Checked by: MP

(To be read in conjunction with Vieo system specification documents)

**Euroclad Group Ltd,  
Wentloog Corporate Park,  
Wentloog Road, Cardiff CF3 2ER  
Tel: +44 (0)2922 010101  
Fax: +44 (0)2922 010122  
Website: [www.vieorooft.com](http://www.vieorooft.com)**

This draft drawing has been supplied by Euro Clad Ltd for the purpose of guidance free of charge. It is a suggested typical detail and as such should not be assumed suitable for any specific project or application. No responsibility is assumed for errors or misinterpretations resulting from the information contained in the drawing. Details are for illustration only and no liability is accepted. We reserve the right to change the details without notice. The drawing is copyright, it remains our property.





**TITLE: Vio Vertical Warm Wall (On Ply or OSB)**

**DWG NO: V13\_VW\_T\_System**

**SCALE: NTS**

**ISSUE DATE: Feb 2019**

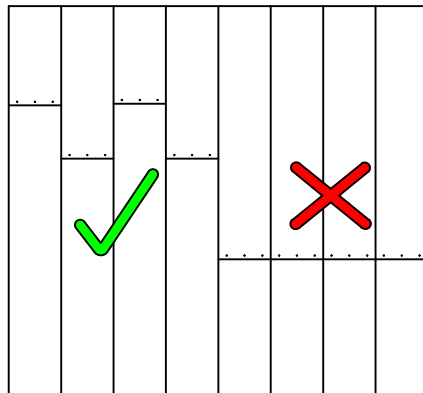
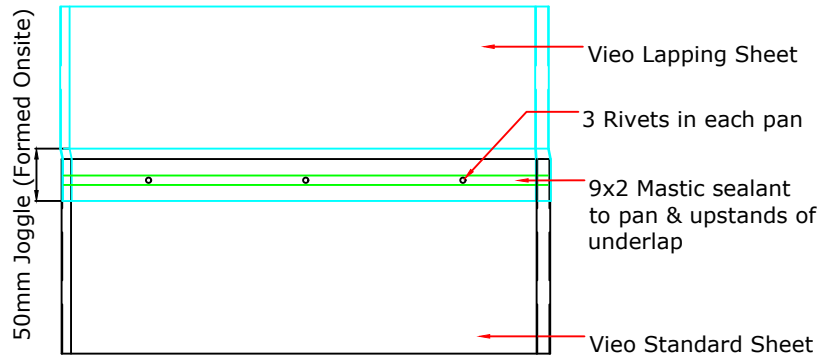
Drawn by: CD Checked by: MP

(To be read in conjunction with Vio system specification documents)

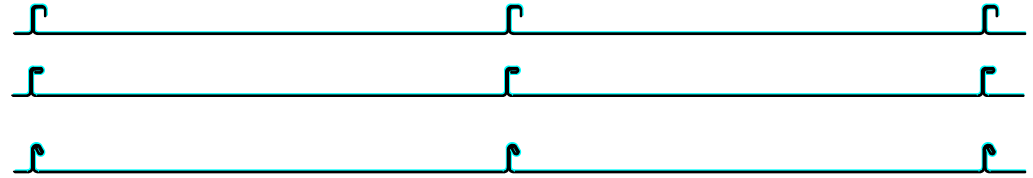
**Euroclad Group Ltd,  
Wentloog Corporate Park,  
Wentloog Road, Cardiff CF3 2ER  
Tel: +44 (0)2922 010101  
Fax: +44 (0)2922 010122  
Website: [www.vieoroof.com](http://www.vieoroof.com)**

This draft drawing has been supplied by Euro Clad Ltd for the purpose of guidance free of charge. It is a suggested typical detail and as such should not be assumed suitable for any specific project or application. No responsibility is assumed for errors or misinterpretations resulting from the information contained in the drawing. Details are for illustration only and no liability is accepted. We reserve the right to change the details without notice. The drawing is copyright, it remains our property.

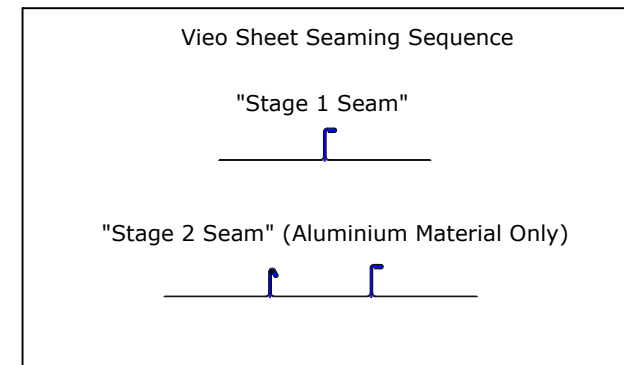
For advice on fixed point locations please contact Euroclad Technical



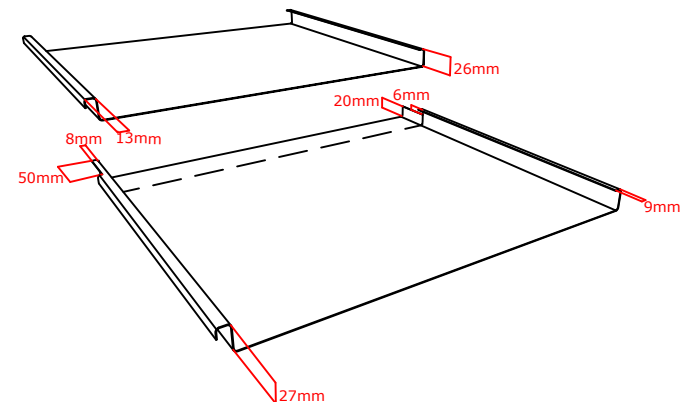
Lap joints must be staggered at least 100mm apart  
Clips minimum 100mm from joint



#### SEAMING OPTIONS AT END LAP



Vio Sheets cut on site prior to jointing





**TITLE: Vieo Vertical Warm Wall (On Ply or OSB)**

**DWG NO: V13\_VW\_T\_System**

**SCALE: NTS**

**ISSUE DATE: Feb 2019**

Drawn by: CD Checked by: MP

(To be read in conjunction with Vieo system specification documents)

**Euroclad Group Ltd,  
Wentloog Corporate Park,  
Wentloog Road, Cardiff CF3 2ER  
Tel: +44 (0)2922 010101  
Fax: +44 (0)2922 010122  
Website: [www.vieoroof.com](http://www.vieoroof.com)**

This draft drawing has been supplied by Euro Clad Ltd for the purpose of guidance free of charge. It is a suggested typical detail and as such should not be assumed suitable for any specific project or application. No responsibility is assumed for errors or misinterpretations resulting from the information contained in the drawing. Details are for illustration only and no liability is accepted. We reserve the right to change the details without notice. The drawing is copyright, it remains our property.

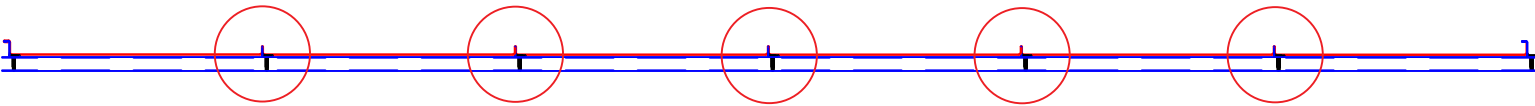
## STEP 1

Damaged sheets in red



## STEP 2

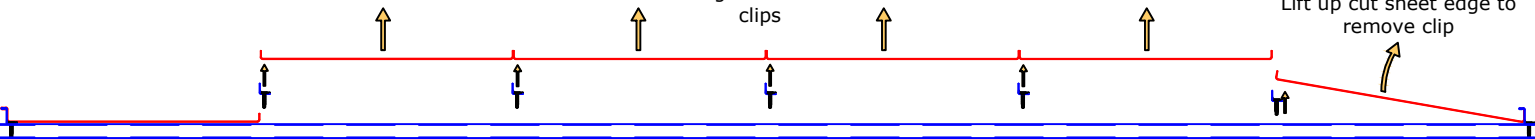
Cut off upstands of damaged sheets



## STEP 3

Remove the central damaged sheets and clips

Lift up cut sheet edge to remove clip



## STEP 4

Apply touch up paint to cut edge.

Apply an adhesive to bond the single upstand sheet to the damaged sheet.

Single upstand sheets  
Lay down new sheets and clips.  
**Note: Clip Fixings to be offset from existing fixing holes**

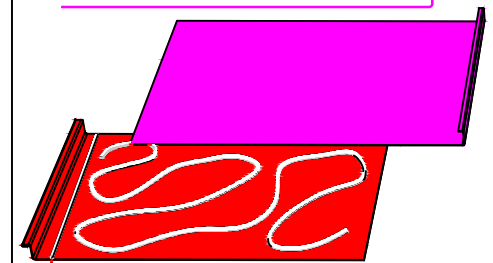
Apply an adhesive to bond the single upstand sheet to the damaged sheet.

Apply touch up paint to cut edge.

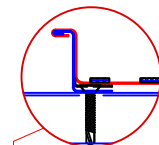
Damaged sheet cut back from cut off upstand to provide a flat bonding surface.

Damaged sheet cut back from cut off upstand to provide a flat bonding surface.

Single upstand sheet should be manufactured narrower than what was originally ordered to allow for creep of new sheets.



Continuous run of adhesive set back by 10-15mm from sheet edge to be of consistent bead size.



Pressure should be applied to achieve a bond and seal along sheet length. Use sealed rivets if necessary.

## STEP 5

New sheets in place

