



TITLE: Vieo Warm Roof (Onto MW5 Inverted Liner Upslope)

DWG NO: V3_WR_ILU_System

SCALE: NTS

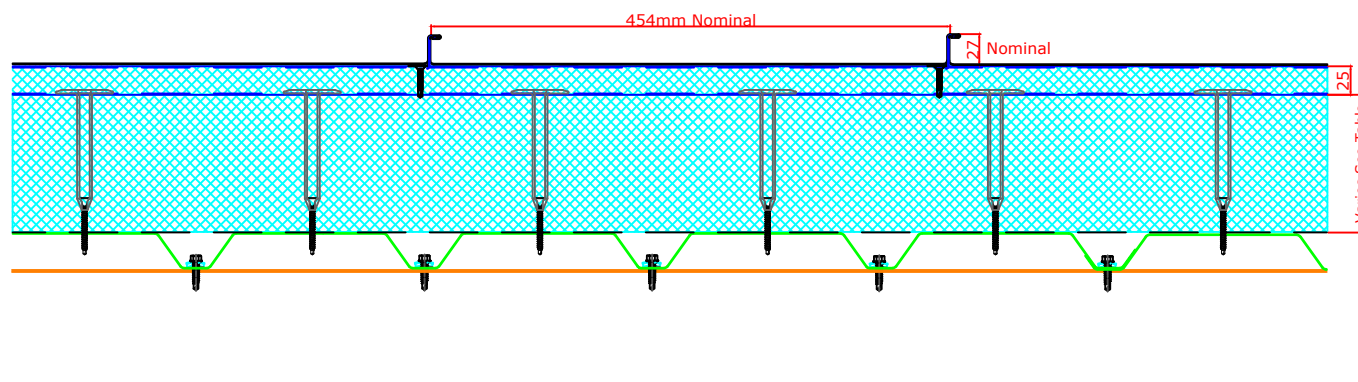
ISSUE DATE: Feb 2019

Drawn by: CD Checked by: MP

(To be read in conjunction with Vieo system specification documents)

**Euroclad Group Ltd,
Wentloog Corporate Park,
Wentloog Road, Cardiff CF3 2ER
Tel: +44 (0)2922 010101
Fax: +44 (0)2922 010122
Website: www.vieorooft.com**

This draft drawing has been supplied by Euro Clad Ltd for the purpose of guidance free of charge. It is a suggested typical detail and as such should not be assumed suitable for any specific project or application. No responsibility is assumed for errors or misinterpretations resulting from the information contained in the drawing. Details are for illustration only and no liability is accepted. We reserve the right to change the details without notice. The drawing is copyright, it remains our property.



U Value	0.25	0.20	0.18	0.15
Insulation Depth (Excluding 25mm upper slab)	115mm	150mm	170mm	205mm
Overall System Depth (Including MW5 Inverted Liner)	201mm	236mm	256mm	291mm
System Weight / M²				
Steel 0.7mm (Including MW5 Inverted Liner)	27.98 kg/m ²	31.66 kg/m ²	33.76 kg/m ²	37.43 kg/m ²
System Weight / M²				
Aluminium 0.9mm (Including MW5 Inverted Liner)	24.49 kg/m ²	28.17 kg/m ²	30.27 kg/m ²	33.94 kg/m ²

U Value (RocSlab Lite)	0.25	0.17	0.15	0.13	0.11
Insulation Depth (Excluding 25mm upper slab)	90mm	130mm	150mm	180mm	200mm
Overall System Depth (Including MW5 Inverted Liner)	144mm	184mm	204mm	234mm	254mm
System Weight / M²					
Steel 0.7mm (Including MW5 Inverted Liner)	25.71 kg/m ²	26.99 kg/m ²	27.63 kg/m ²	28.59 kg/m ²	29.23 kg/m ²
System Weight / M²					
Aluminium 0.9mm (Including MW5 Inverted Liner)	22.22 kg/m ²	23.50 kg/m ²	24.14 kg/m ²	25.10 kg/m ²	25.74 kg/m ²

RocSlab Lite is a combination of PIR and Rock Fibre insulation



TITLE: Vio Warm Roof (Onto MW5 Inverted Liner Upslope)

DWG NO: V3_WR_ILU_System

SCALE: NTS

ISSUE DATE: Feb 2019

Drawn by: CD Checked by: MP

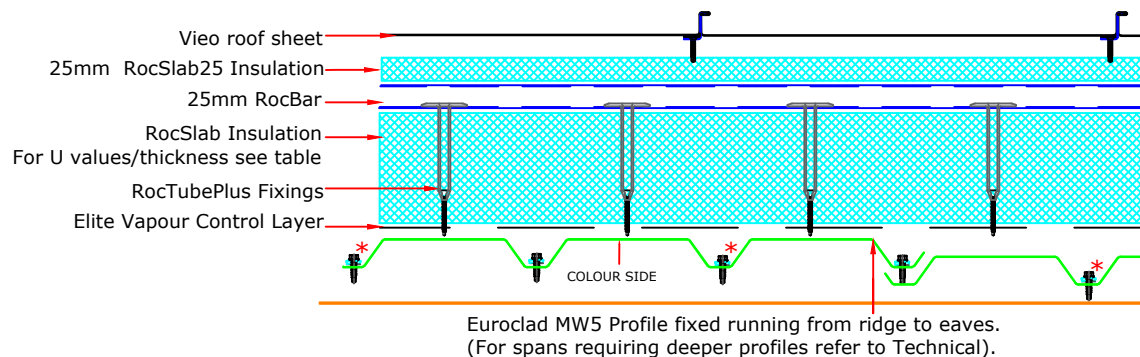
(To be read in conjunction with Vio system specification documents)

**Euroclad Group Ltd,
Wentloog Corporate Park,
Wentloog Road, Cardiff CF3 2ER
Tel: +44 (0)2922 010101
Fax: +44 (0)2922 010122
Website: www.vieoroof.com**

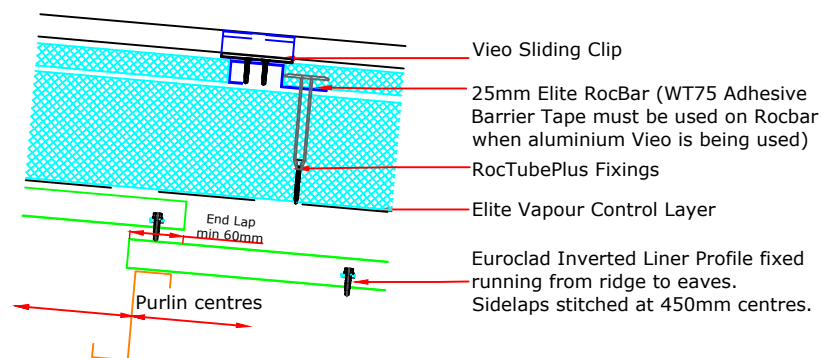
This draft drawing has been supplied by Euro Clad Ltd for the purpose of guidance free of charge. It is a suggested typical detail and as such should not be assumed suitable for any specific project or application. No responsibility is assumed for errors or misinterpretations resulting from the information contained in the drawing. Details are for illustration only and no liability is accepted. We reserve the right to change the details without notice. The drawing is copyright, it remains our property.

Please Note:

WT75 Self Adhesive Barrier Tape must be used on Rocbar when aluminium Vio is being used.



*Fixings with an asterisk are required on sheet ends and end laps only.



Vio Sheet Seaming Sequence

"Stage 1 Seam"



"Stage 2 Seam" (Aluminium Material Only)





TITLE: Vieo Warm Roof (Onto MW5 Inverted Liner Upslope)

DWG NO: V3_WR_ILU_System

SCALE: NTS

ISSUE DATE: Feb 2019

Drawn by: CD Checked by: MP

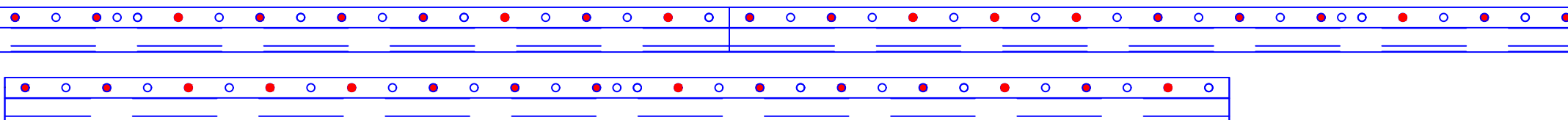
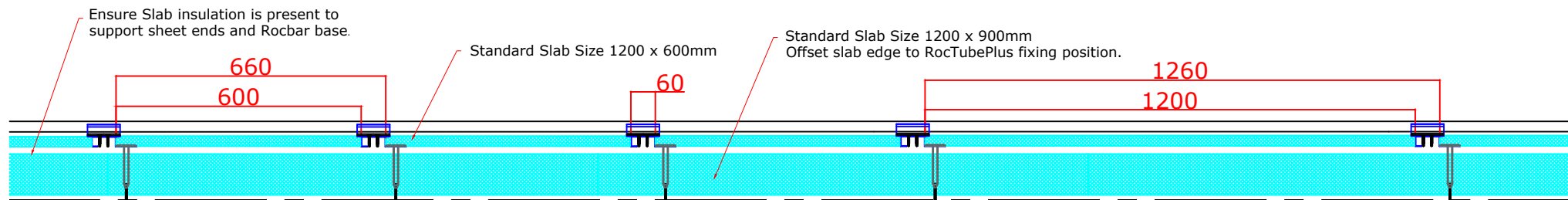
(To be read in conjunction with Vieo system specification documents)

**Euroclad Group Ltd,
Wentloog Corporate Park,
Wentloog Road, Cardiff CF3 2ER
Tel: +44 (0)2922 010101
Fax: +44 (0)2922 010122
Website: www.vieorooft.com**

This draft drawing has been supplied by Euro Clad Ltd for the purpose of guidance free of charge. It is a suggested typical detail and as such should not be assumed suitable for any specific project or application. No responsibility is assumed for errors or misinterpretations resulting from the information contained in the drawing. Details are for illustration only and no liability is accepted. We reserve the right to change the details without notice. The drawing is copyright, it remains our property.

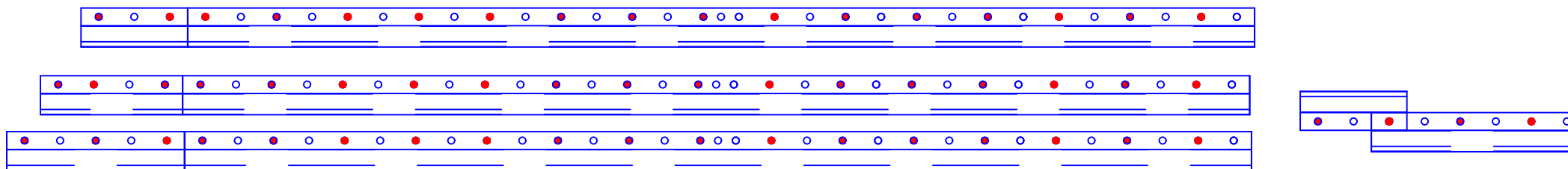
**Typical arrangement: 1260mm in central areas, reduced clip centres at ridge eaves and perimeters and in high load areas.
Check system capacity against project loads and adjust if necessary**

**Maximum clip centres:
Determined by project wind suction loads as follows:
1260mm for loads up to 1.5kN/m²
660mm for loads 1.5 to 2.0kN/m²
300mm for loads 2.0 to 4.0kN/m²
Where substrate is min 0.7mm steel**



STANDARD FIXINGS PATTERN: AT MAXIMUM 200mm CENTRES (15 FIXINGS PER 3M ROCBAR)

**WHERE OFFCUTS ARE USED:
A MINIMUM HOLE TO CUT EDGE DISTANCE OF 50MM IS REQUIRED.
MAXIMUM 200MM FIXING CENTRES MUST BE MAINTAINED & EACH
OFFCUT MUST HAVE A FIXING IN EACH END HOLE.
THE MINIMUM OFFCUT ALLOWABLE IS 300mm LONG WITH A FIXING IN EACH END.
IF A SHORTER LENGTH THEN 300mm IS REQUIRED, ROTATE THE RAIL AND LAP BACK.**





TITLE: Vieo Warm Roof (Onto MW5 Inverted Liner Upslope)

DWG NO: V3_WR_ILU_System

SCALE: NTS

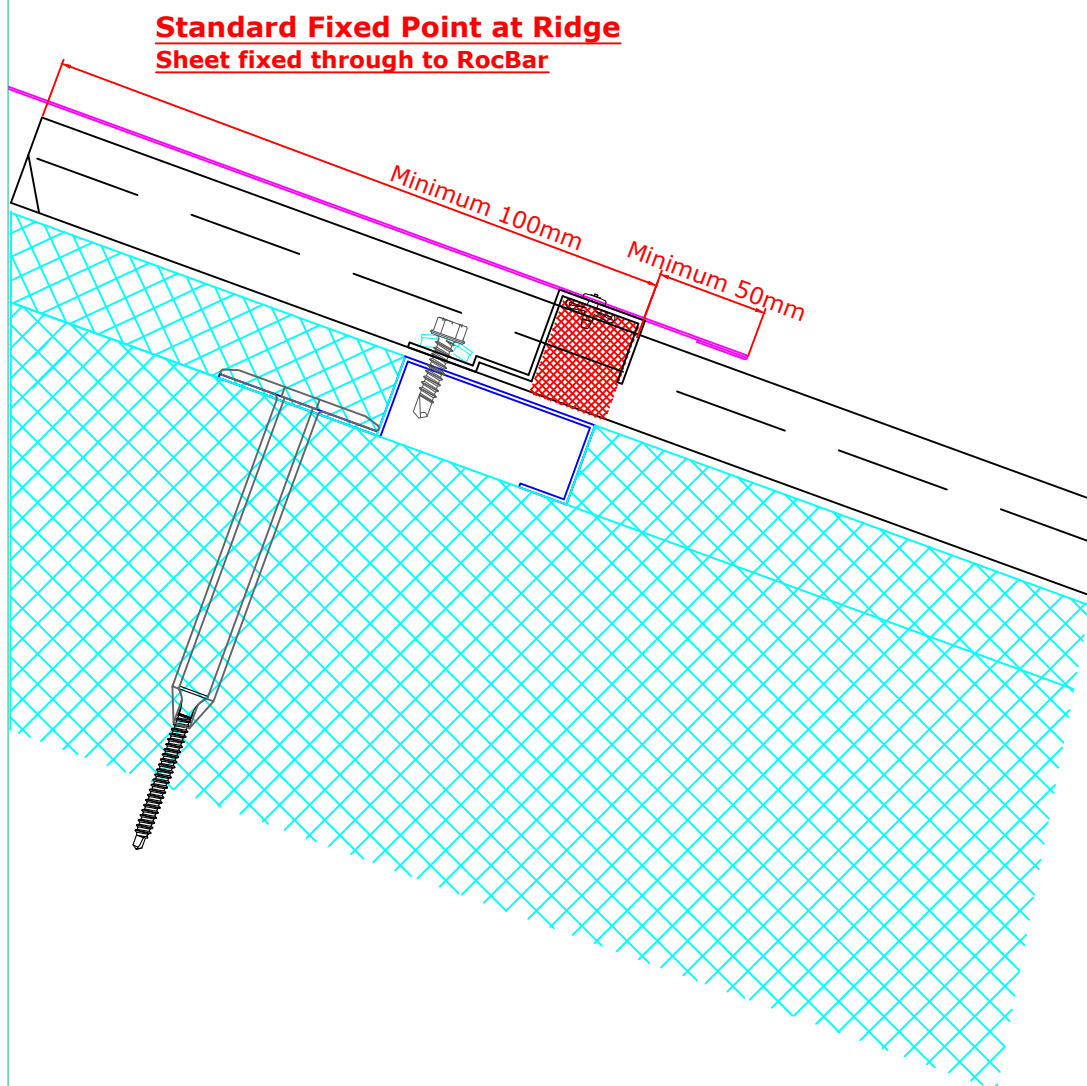
ISSUE DATE: Feb 2019

(To be read in conjunction with Vieo system specification documents)

**Euroclad Group Ltd,
Wentloog Corporate Park,
Wentloog Road, Cardiff CF3 2ER
Tel: +44 (0)2922 010101
Fax: +44 (0)2922 010122
Website: www.vieorooft.com**

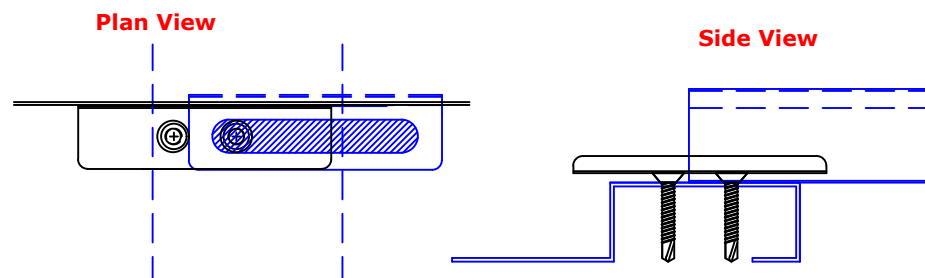
Drawn by: CD Checked by: MP

This draft drawing has been supplied by Euro Clad Ltd for the purpose of guidance free of charge. It is a suggested typical detail and as such should not be assumed suitable for any specific project or application. No responsibility is assumed for errors or misinterpretations resulting from the information contained in the drawing. Details are for illustration only and no liability is accepted. We reserve the right to change the details without notice. The drawing is copyright, it remains our property.



Alternative for use elsewhere on slope:

Create Fixed Point by offsetting base part of clip and fixing either side



Take note of anticipated direction of travel when laying out sheets & fixing.



TITLE: Vieo Warm Roof (Onto MW5 Inverted Liner Upslope)

DWG NO: V3_WR_ILU_System

SCALE: NTS

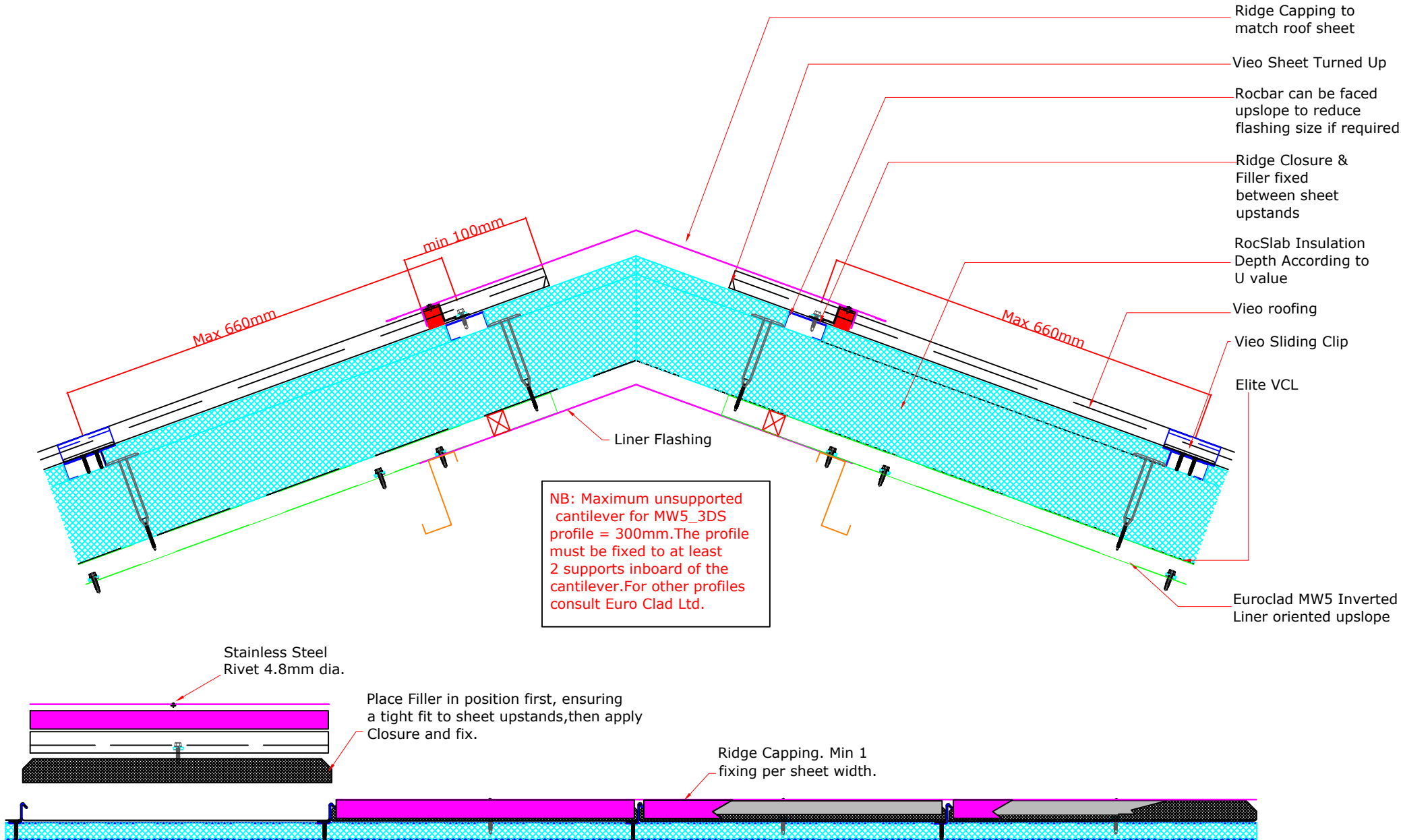
ISSUE DATE: Feb 2019

Drawn by: CD Checked by: MP

(To be read in conjunction with Vieo system specification documents)

**Euroclad Group Ltd,
Wentloog Corporate Park,
Wentloog Road, Cardiff CF3 2ER
Tel: +44 (0)2922 010101
Fax: +44 (0)2922 010122
Website: www.vieorooft.com**

This draft drawing has been supplied by Euro Clad Ltd for the purpose of guidance free of charge. It is a suggested typical detail and as such should not be assumed suitable for any specific project or application. No responsibility is assumed for errors or misinterpretations resulting from the information contained in the drawing. Details are for illustration only and no liability is accepted. We reserve the right to change the details without notice. The drawing is copyright, it remains our property.





TITLE: Vieo Warm Roof (Onto MW5 Inverted Liner Upslope)

DWG NO: V3_WR_ILU_System

SCALE: NTS

ISSUE DATE: Feb 2019

Drawn by: CD Checked by: MP

(To be read in conjunction with Vieo system specification documents)

**Euroclad Group Ltd,
Wentloog Corporate Park,
Wentloog Road, Cardiff CF3 2ER
Tel: +44 (0)2922 010101
Fax: +44 (0)2922 010122
Website: www.vieorooft.com**

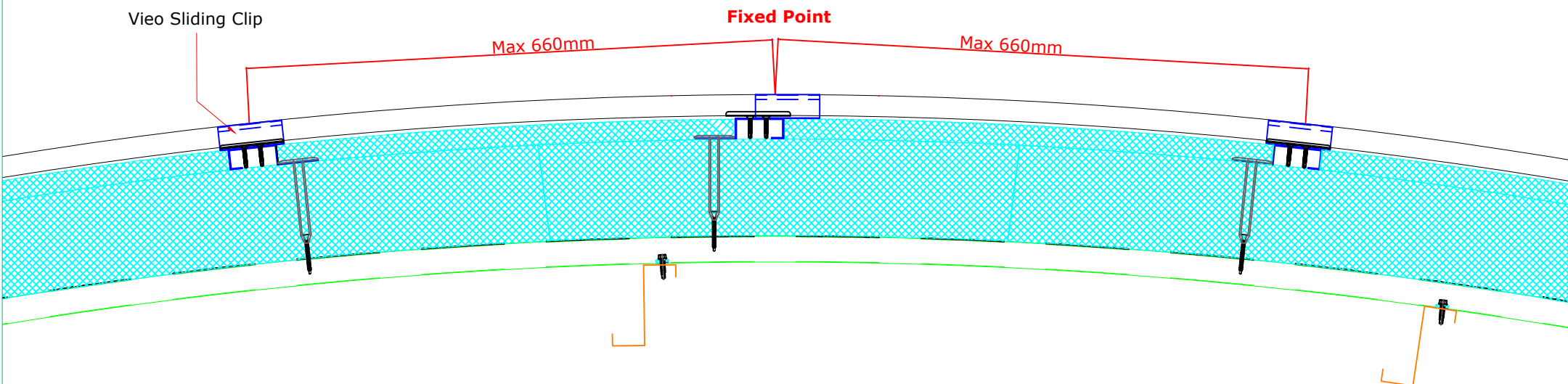
This draft drawing has been supplied by Euro Clad Ltd for the purpose of guidance free of charge. It is a suggested typical detail and as such should not be assumed suitable for any specific project or application. No responsibility is assumed for errors or misinterpretations resulting from the information contained in the drawing. Details are for illustration only and no liability is accepted. We reserve the right to change the details without notice. The drawing is copyright, it remains our property.

Vieo Sliding Clip

Fixed Point

Max 660mm

Max 660mm



Below 50M radius RocSlab needs to be partially sawn through from bottom to around 50mm from top of slab to allow it to follow curves.
The integrity of the slab must be maintained at fixing positions.
When cutting vee grooves in small radii ensure that these are cut to minimum width to ensure continuity of insulation.



TITLE: Vieo Warm Roof (Onto MW5 Inverted Liner Upslope)

DWG NO: V3_WR_ILU_System

SCALE: NTS

ISSUE DATE: Feb 2019

Drawn by: CD Checked by: MP

(To be read in conjunction with Vieo system specification documents)

**Euroclad Group Ltd,
Wentloog Corporate Park,
Wentloog Road, Cardiff CF3 2ER
Tel: +44 (0)2922 010101
Fax: +44 (0)2922 010122
Website: www.vieorooft.com**

This draft drawing has been supplied by Euro Clad Ltd for the purpose of guidance free of charge. It is a suggested typical detail and as such should not be assumed suitable for any specific project or application. No responsibility is assumed for errors or misinterpretations resulting from the information contained in the drawing. Details are for illustration only and no liability is accepted. We reserve the right to change the details without notice. The drawing is copyright, it remains our property.

Ridge Expansion Detail
(for use when fixed point
is not created at ridge).

Flashing fixed to
inverted Ridge Closure

Rivet closure to sheet prior to
application

Maximum 75mm

Maximum allowable to
next Vieo clip 300mm

* Allow clearance for anticipated
movement between support Closure, end of
Vieo sheet & Ridge Closure
Max 15mm of movement accommodated

end of Vieo sheet must fall under
downslope edge of inverted Closure

Ridge Expansion Detail
(for use when fixed point
is not created at ridge).

Flashing fixed to ridge flashing support angle
min 1.5mm gauge aluminium

Rivet closure to sheet prior to
application

Maximum 75mm

Maximum allowable to
next Vieo clip 300mm

* Allow clearance for anticipated
movement between support angle, end of
Vieo sheet & Ridge Closure
Angle to be designed to accommodate
further thermal movement

end of Vieo sheet must fall under
downslope edge of angle flashing piece



TITLE: Vio Warm Roof (Onto MW5 Inverted Liner Upslope)

DWG NO: V3_WR_ILU_System

SCALE: NTS

ISSUE DATE: Feb 2019

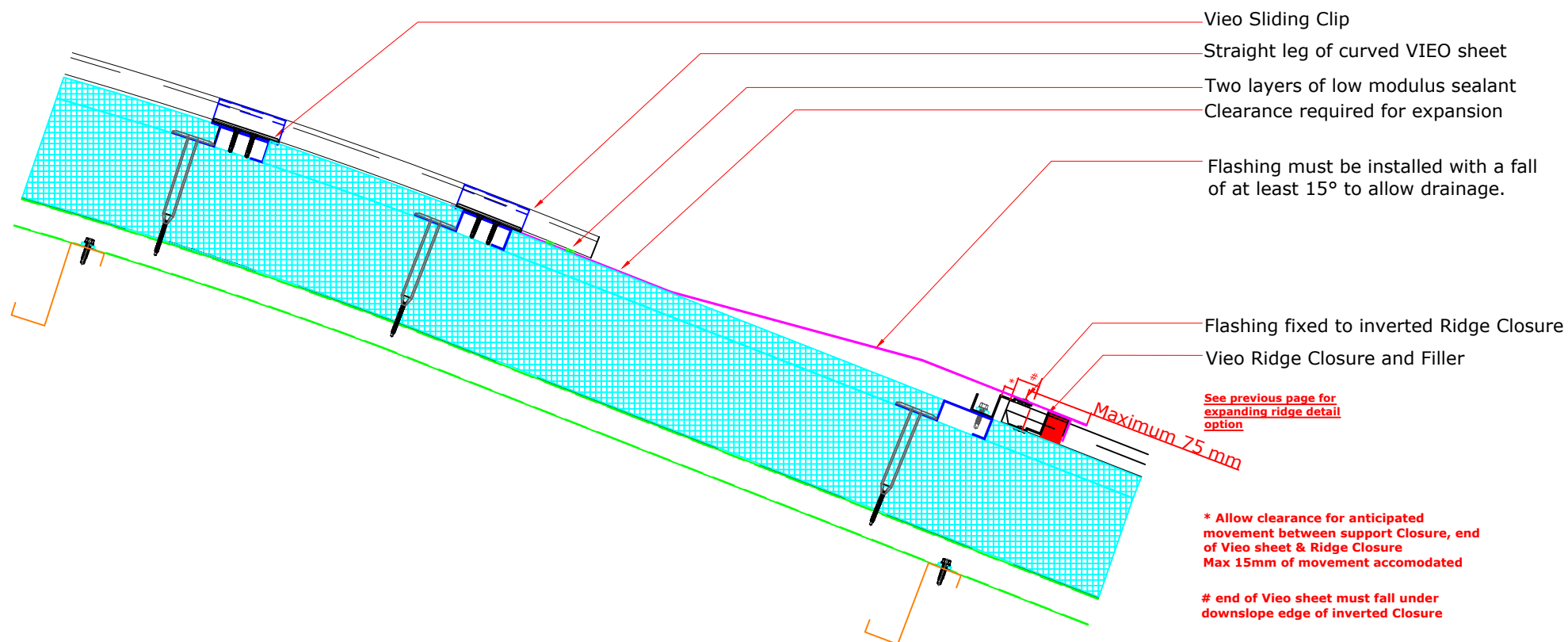
Drawn by: CD Checked by: MP

(To be read in conjunction with Vio system specification documents)

**Euroclad Group Ltd,
Wentloog Corporate Park,
Wentloog Road, Cardiff CF3 2ER
Tel: +44 (0)2922 010101
Fax: +44 (0)2922 010122
Website: www.vieorooft.com**

This draft drawing has been supplied by Euro Clad Ltd for the purpose of guidance free of charge. It is a suggested typical detail and as such should not be assumed suitable for any specific project or application. No responsibility is assumed for errors or misinterpretations resulting from the information contained in the drawing. Details are for illustration only and no liability is accepted. We reserve the right to change the details without notice. The drawing is copyright, it remains our property.

Suitable for pitches of $\geq 15^\circ$





TITLE: Vieo Warm Roof (Onto MW5 Inverted Liner Upslope)

DWG NO: V3_WR_ILU_System

SCALE: NTS

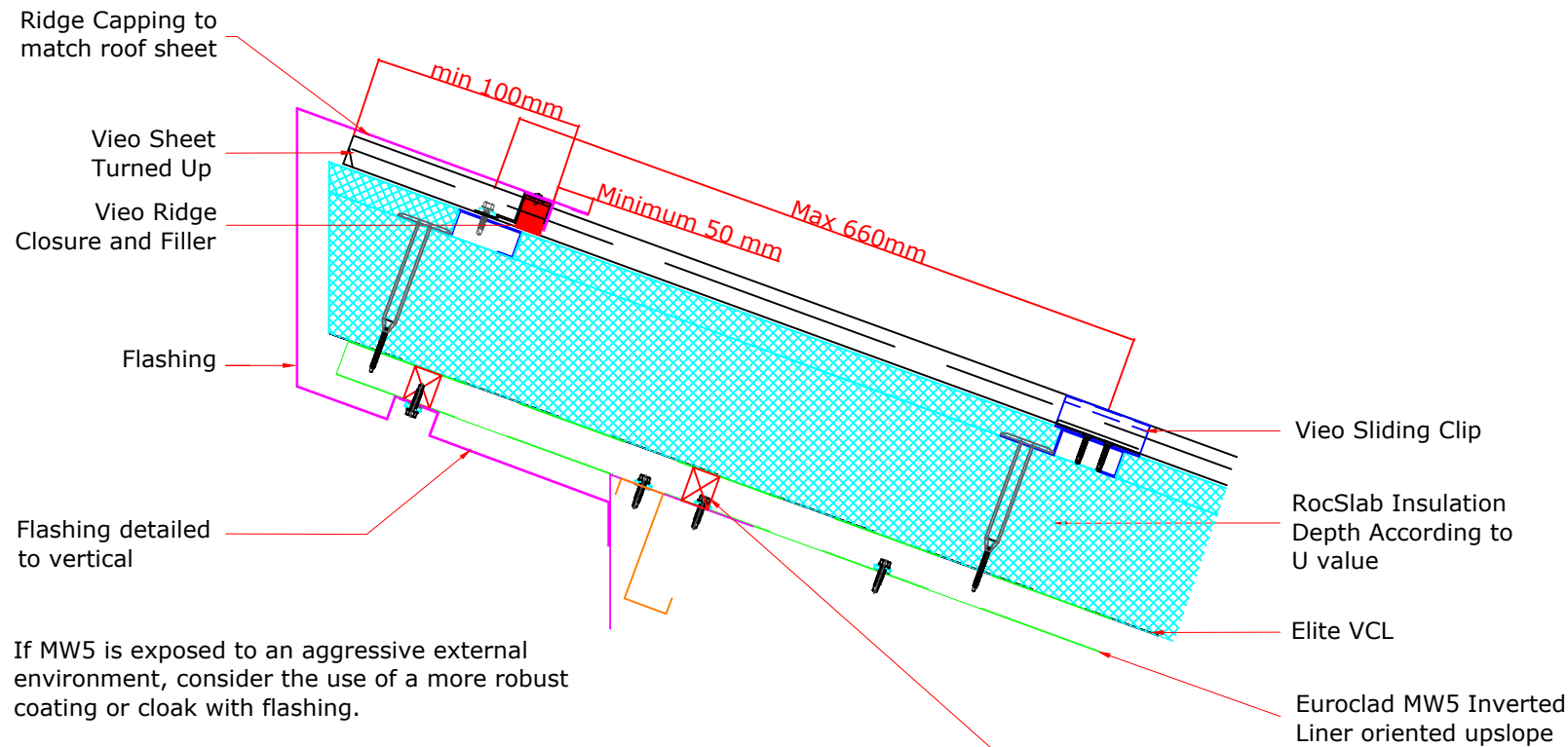
ISSUE DATE: Feb 2019

Drawn by: CD Checked by: MP

(To be read in conjunction with Vieo system specification documents)

**Euroclad Group Ltd,
Wentloog Corporate Park,
Wentloog Road, Cardiff CF3 2ER
Tel: +44 (0)2922 010101
Fax: +44 (0)2922 010122
Website: www.vieorooft.com**

This draft drawing has been supplied by Euro Clad Ltd for the purpose of guidance free of charge. It is a suggested typical detail and as such should not be assumed suitable for any specific project or application. No responsibility is assumed for errors or misinterpretations resulting from the information contained in the drawing. Details are for illustration only and no liability is accepted. We reserve the right to change the details without notice. The drawing is copyright, it remains our property.



NB: Maximum cantilever for MW5_3DS profile = 300mm. The profile must be fixed to at least 2 supports inboard of the cantilever. For other profiles consult Euro Clad Ltd.



TITLE: Vioo Warm Roof (Onto MW5 Inverted Liner Upslope)

DWG NO: V3_WR_ILU_System

SCALE: NTS

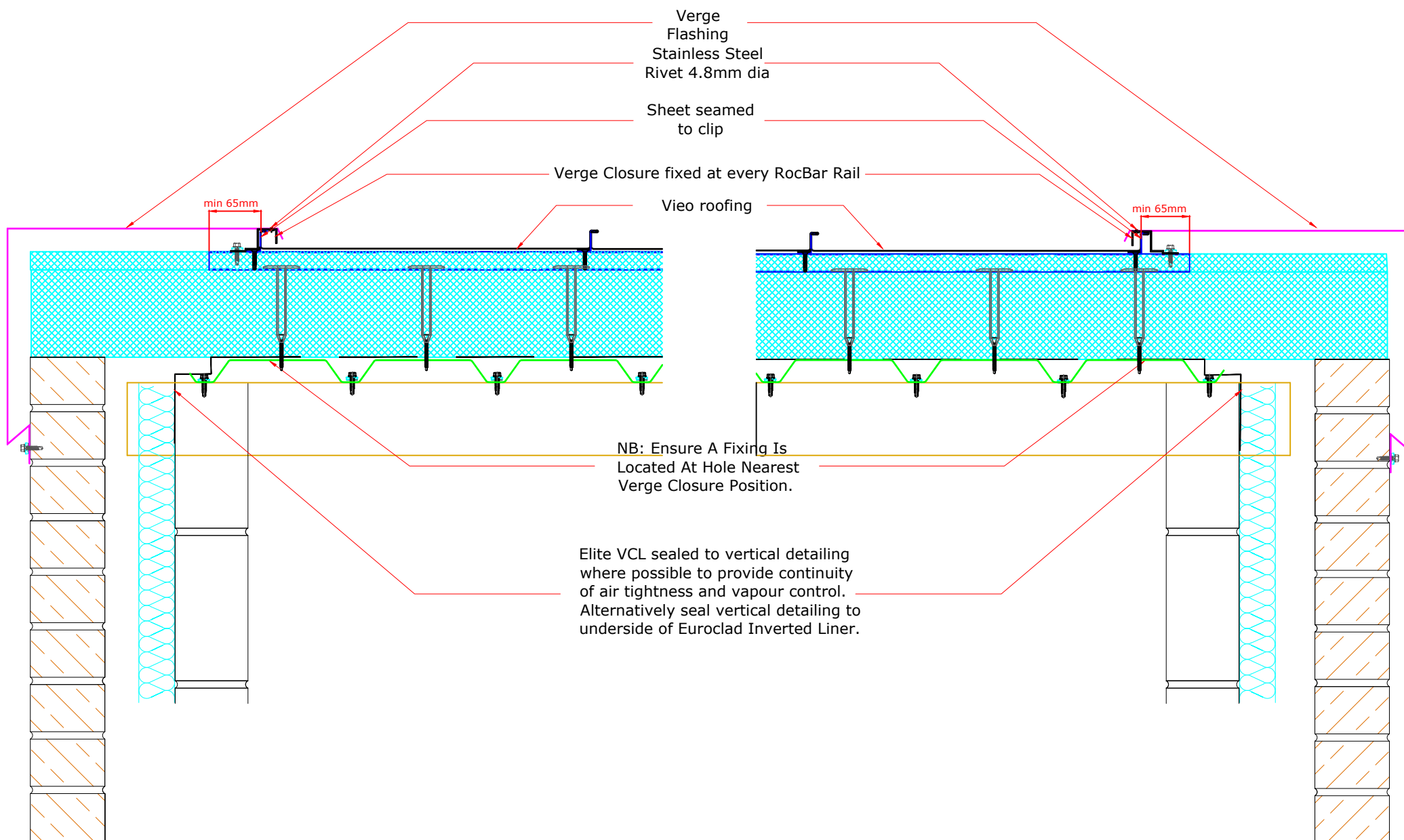
ISSUE DATE: Feb 2019

Drawn by: CD Checked by: MP

(To be read in conjunction with Vioo system specification documents)

**Euroclad Group Ltd,
Wentloog Corporate Park,
Wentloog Road, Cardiff CF3 2ER
Tel: +44 (0)2922 010101
Fax: +44 (0)2922 010122
Website: www.vieorooft.com**

This draft drawing has been supplied by Euro Clad Ltd for the purpose of guidance free of charge. It is a suggested typical detail and as such should not be assumed suitable for any specific project or application. No responsibility is assumed for errors or misinterpretations resulting from the information contained in the drawing. Details are for illustration only and no liability is accepted. We reserve the right to change the details without notice. The drawing is copyright, it remains our property.





TITLE: Vieo Warm Roof (Onto MW5 Inverted Liner Upslope)

DWG NO: V3_WR_ILU_System

SCALE: NTS

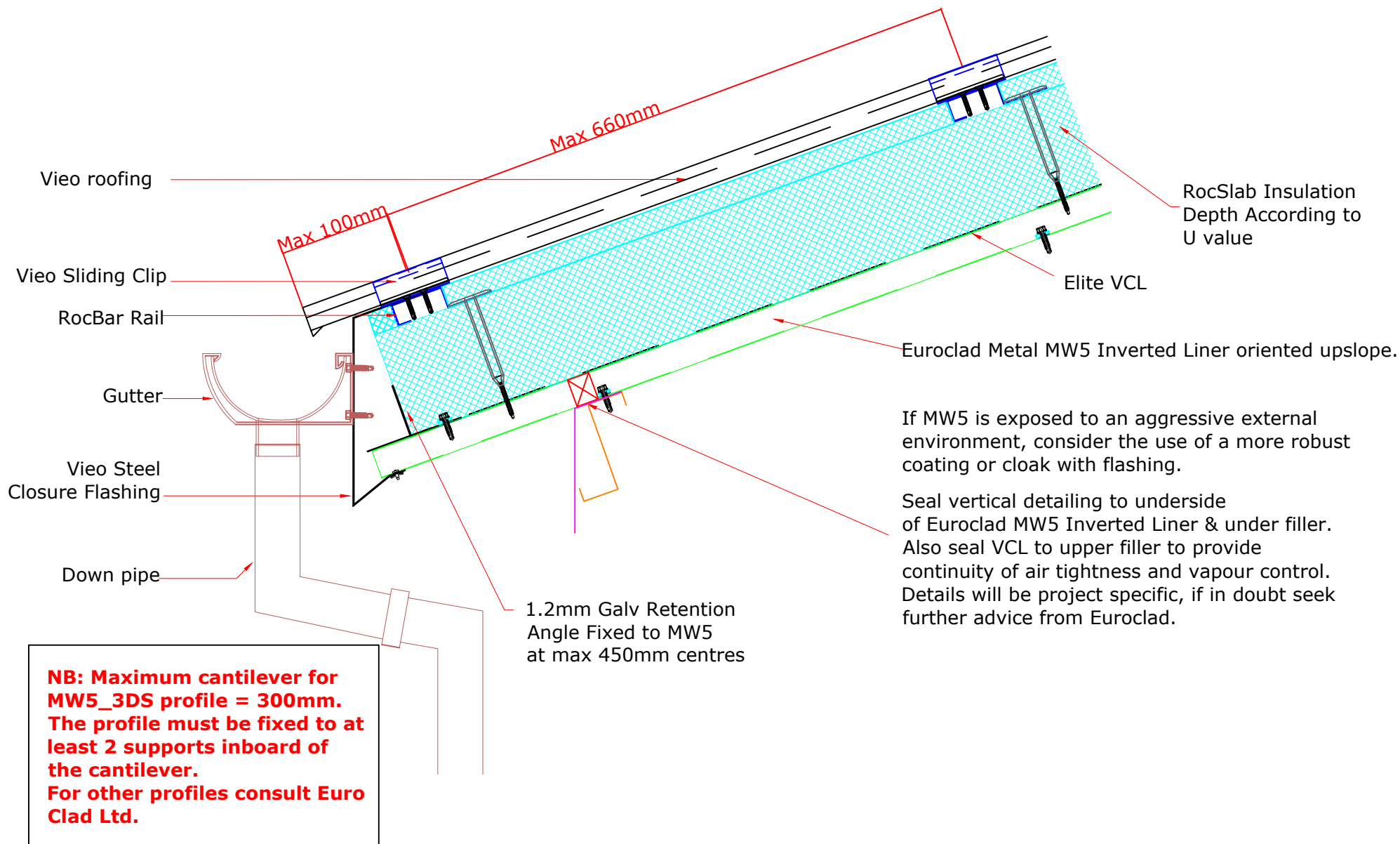
ISSUE DATE: Feb 2019

Drawn by: CD Checked by: MP

(To be read in conjunction with Vieo system specification documents)

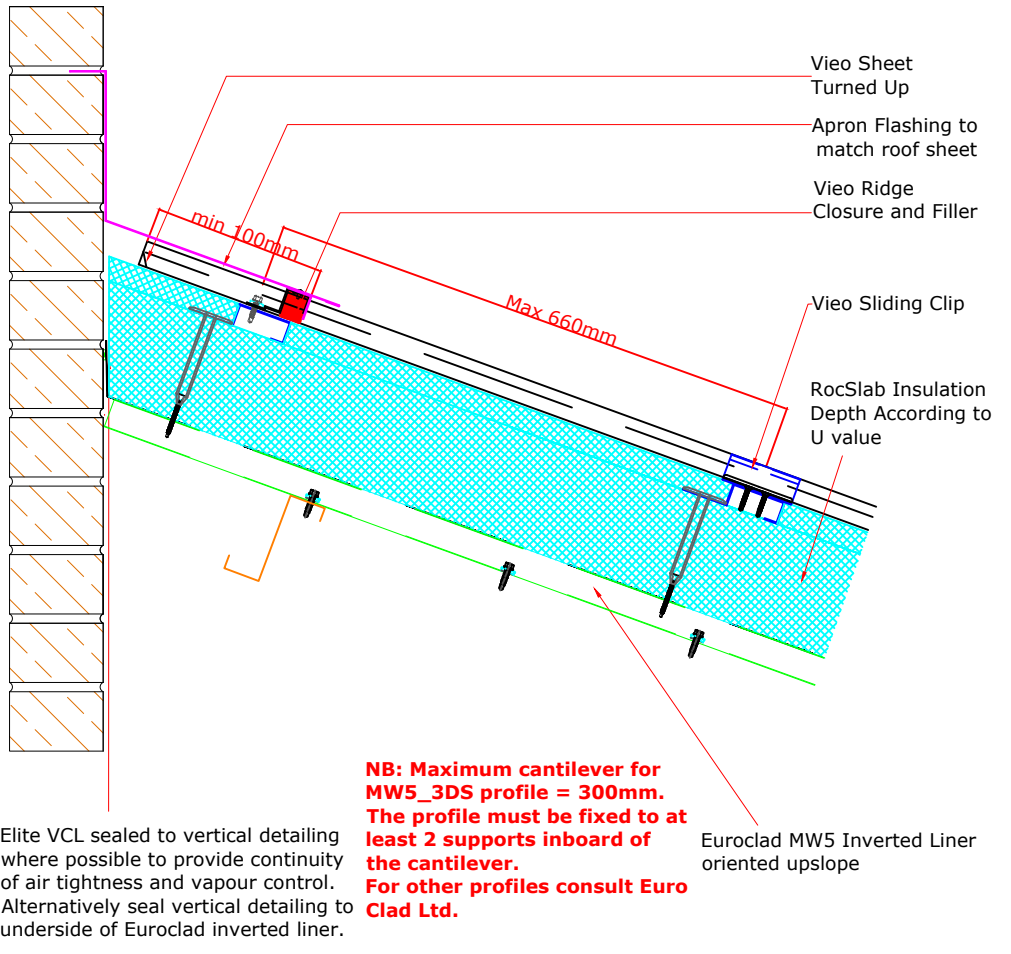
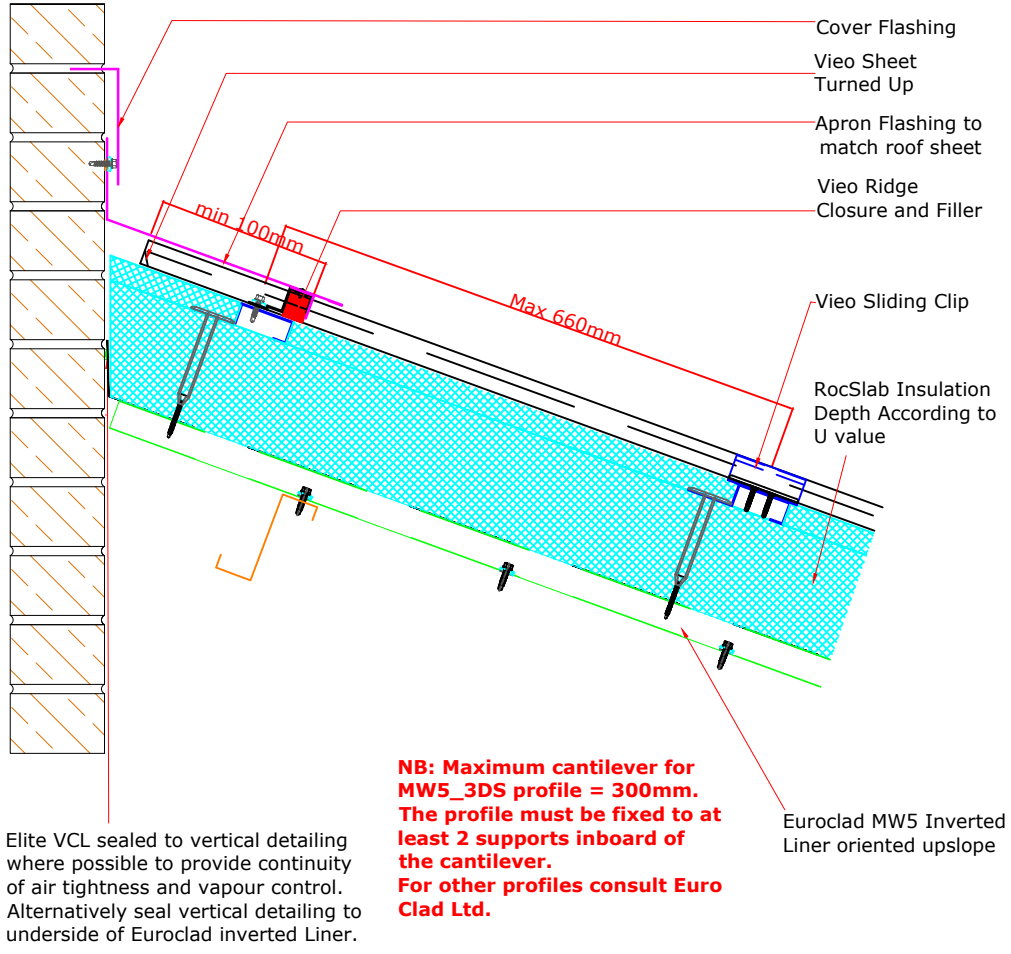
**Euroclad Group Ltd,
Wentloog Corporate Park,
Wentloog Road, Cardiff CF3 2ER
Tel: +44 (0)2922 010101
Fax: +44 (0)2922 010122
Website: www.vieorooft.com**

This draft drawing has been supplied by Euro Clad Ltd for the purpose of guidance free of charge. It is a suggested typical detail and as such should not be assumed suitable for any specific project or application. No responsibility is assumed for errors or misinterpretations resulting from the information contained in the drawing. Details are for illustration only and no liability is accepted. We reserve the right to change the details without notice. The drawing is copyright, it remains our property.





TITLE: Vieo Warm Roof (Onto MW5 Inverted Liner Upslope)	(To be read in conjunction with Vieo system specification documents)	Euroclad Group Ltd, Wentloog Corporate Park, Wentloog Road, Cardiff CF3 2ER Tel: +44 (0)2922 010101 Fax: +44 (0)2922 010122 Website: www.vieorooft.com
DWG NO: V3_WR_ILU_System		
SCALE: NTS		
ISSUE DATE: Feb 2019	Drawn by: CD Checked by: MP	





TITLE: Vieo Warm Roof (Onto MW5 Inverted Liner Upslope)

DWG NO: V3_WR_ILU_System

SCALE: NTS

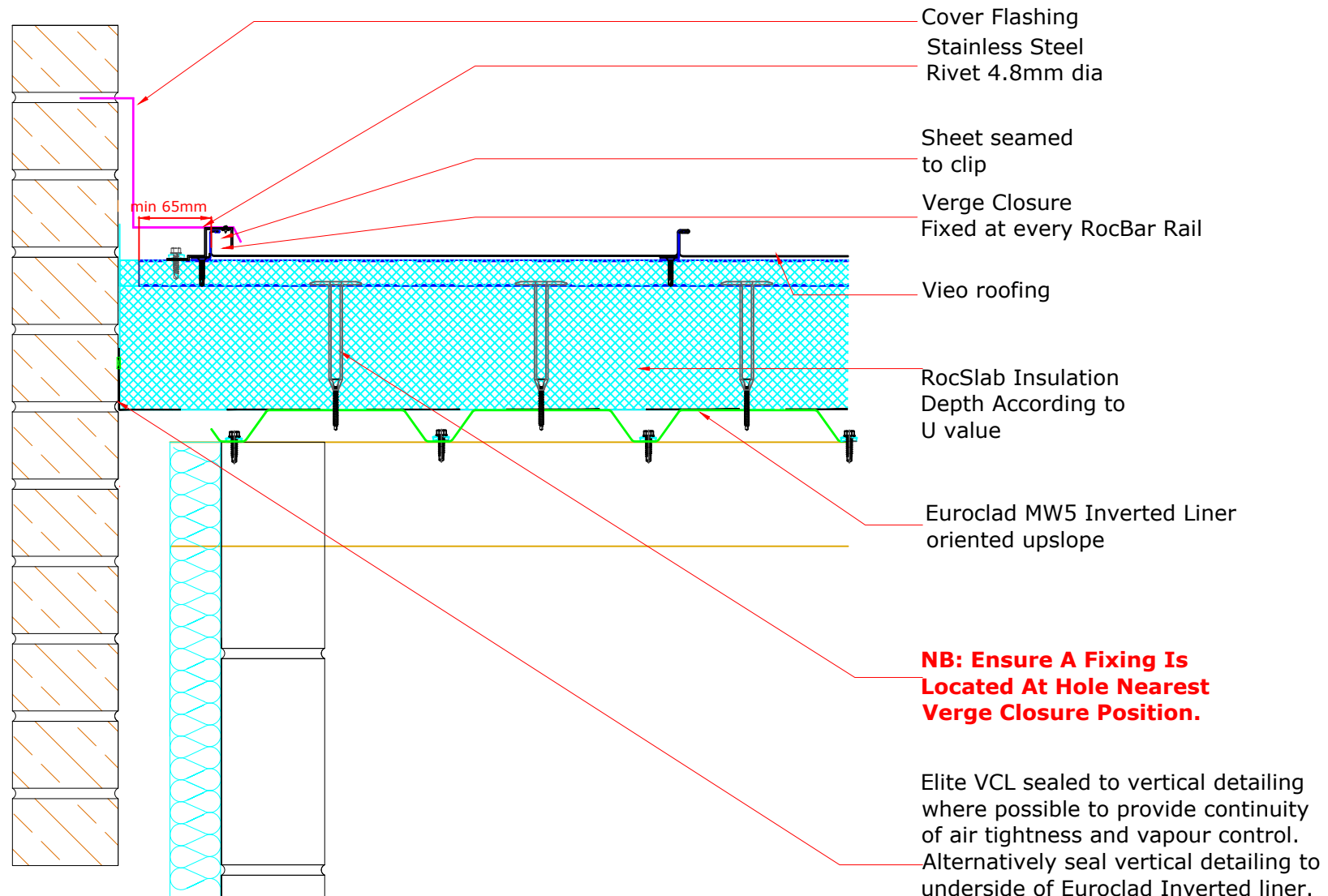
ISSUE DATE: Feb 2019

Drawn by: CD Checked by: MP

(To be read in conjunction with Vieo system specification documents)

**Euroclad Group Ltd,
Wentloog Corporate Park,
Wentloog Road, Cardiff CF3 2ER
Tel: +44 (0)2922 010101
Fax: +44 (0)2922 010122
Website: www.vieorooft.com**

This draft drawing has been supplied by Euro Clad Ltd for the purpose of guidance free of charge. It is a suggested typical detail and as such should not be assumed suitable for any specific project or application. No responsibility is assumed for errors or misinterpretations resulting from the information contained in the drawing. Details are for illustration only and no liability is accepted. We reserve the right to change the details without notice. The drawing is copyright, it remains our property.



RocSlab Insulation Depth According to U value.



TITLE: Vieo Warm Roof (Onto MW5 Inverted Liner Upslope)

DWG NO: V3_WR_ILU_System

SCALE: NTS

ISSUE DATE: Feb 2019

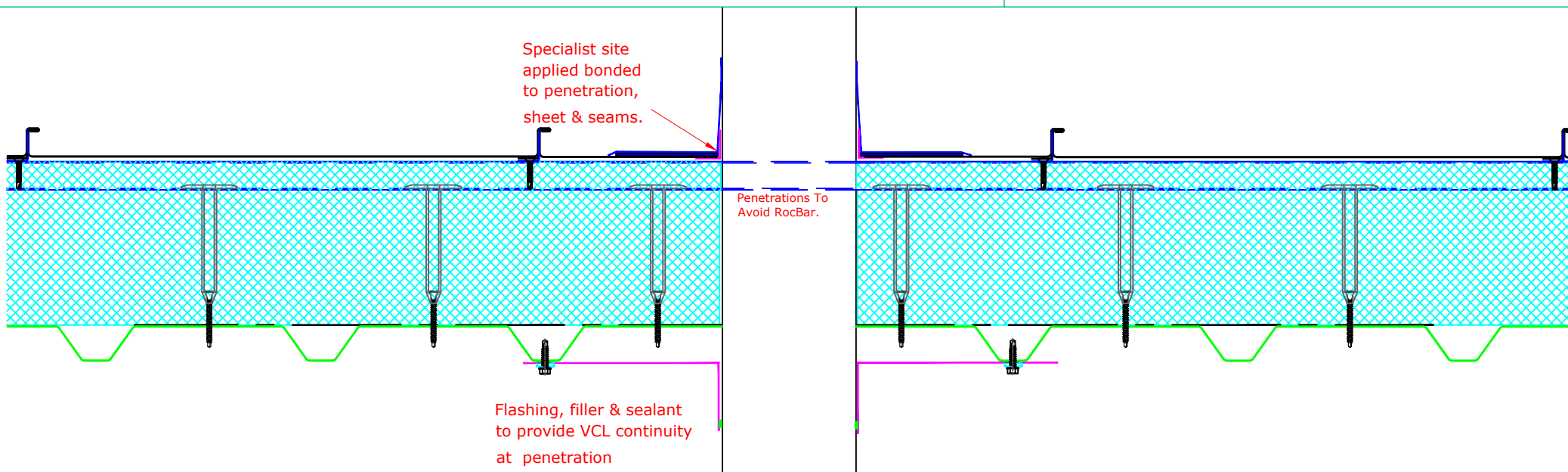
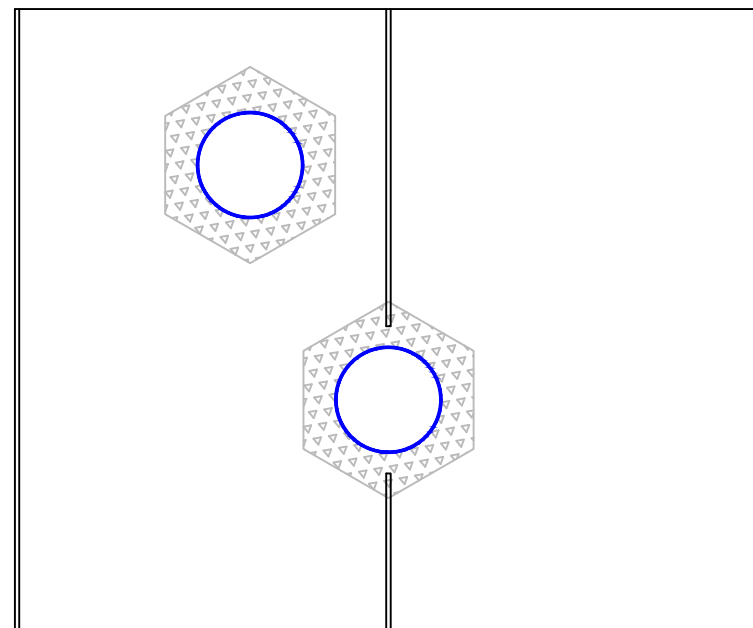
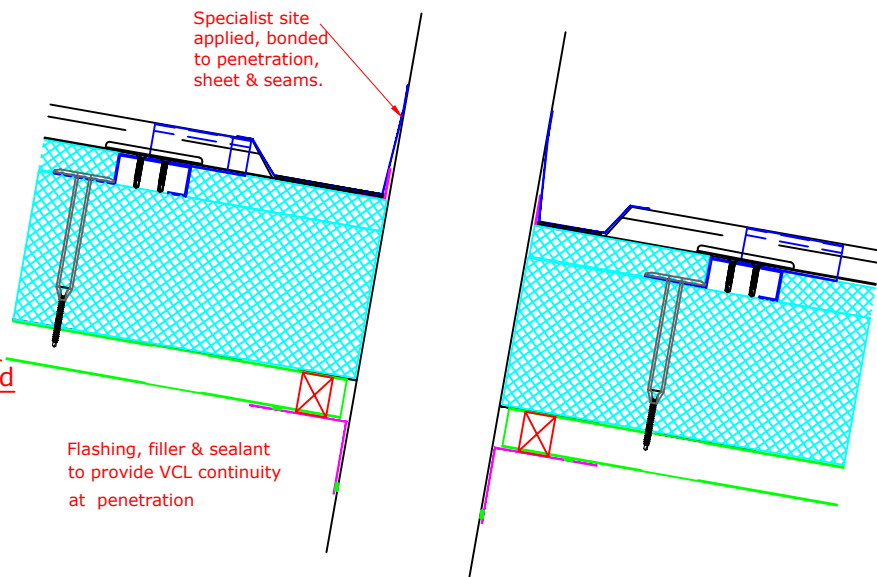
Drawn by: CD Checked by: MP

(To be read in conjunction with Vieo system specification documents)

**Euroclad Group Ltd,
Wentloog Corporate Park,
Wentloog Road, Cardiff CF3 2ER
Tel: +44 (0)2922 010101
Fax: +44 (0)2922 010122
Website: www.vieorooft.com**

This draft drawing has been supplied by Euro Clad Ltd for the purpose of guidance free of charge. It is a suggested typical detail and as such should not be assumed suitable for any specific project or application. No responsibility is assumed for errors or misinterpretations resulting from the information contained in the drawing. Details are for illustration only and no liability is accepted. We reserve the right to change the details without notice. The drawing is copyright, it remains our property.

Create fixed points at clips immediately above & below detail.
Allow free movement of sheets elsewhere.
Ensure Clips are atleast 100mm away from detail at opposite end to fixed point.





TITLE: Vieo Warm Roof (Onto MW5 Inverted Liner Upslope)

DWG NO: V3_WR_ILU_System

SCALE: NTS

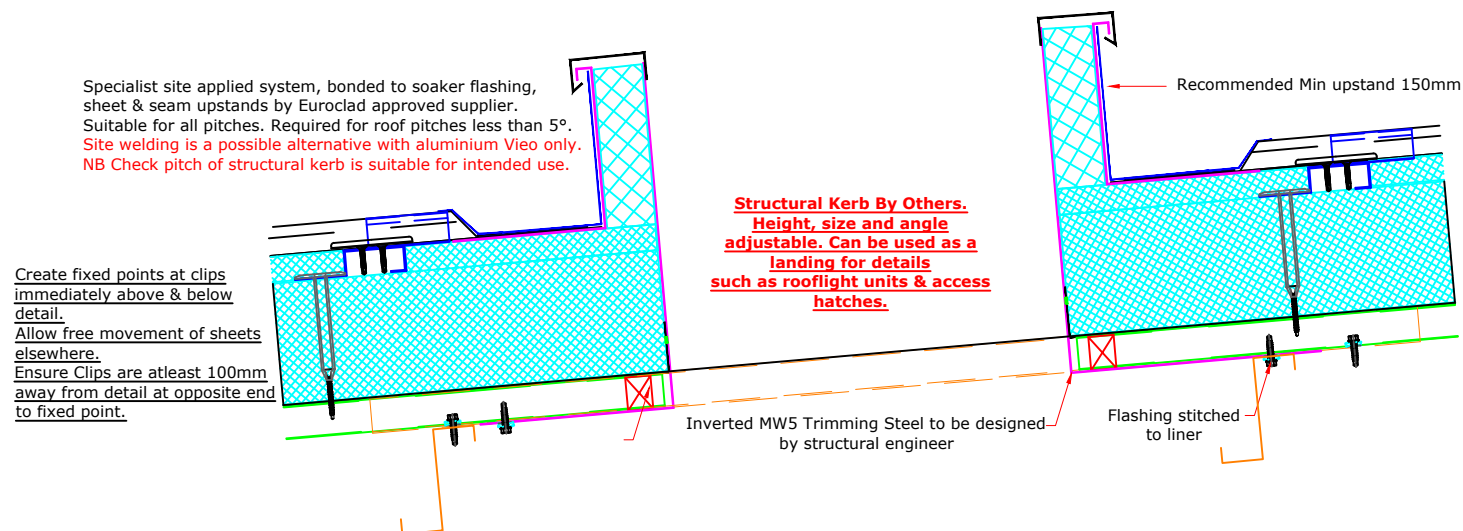
ISSUE DATE: Feb 2019

Drawn by: CD Checked by: MP

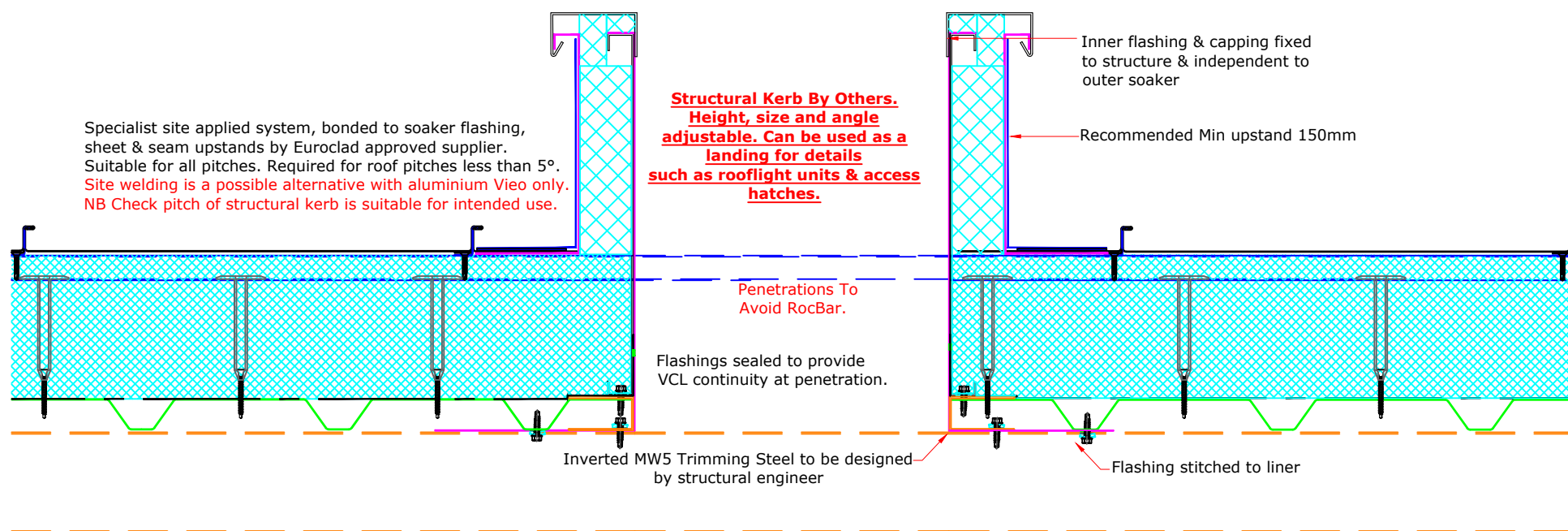
(To be read in conjunction with Vieo system specification documents)

**Euroclad Group Ltd,
Wentloog Corporate Park,
Wentloog Road, Cardiff CF3 2ER
Tel: +44 (0)2922 010101
Fax: +44 (0)2922 010122
Website: www.vieorooft.com**

This draft drawing has been supplied by Euro Clad Ltd for the purpose of guidance free of charge. It is a suggested typical detail and as such should not be assumed suitable for any specific project or application. No responsibility is assumed for errors or misinterpretations resulting from the information contained in the drawing. Details are for illustration only and no liability is accepted. We reserve the right to change the details without notice. The drawing is copyright, it remains our property.



NB: Maximum cantilever for MW5_3DS profile = 300mm. The inverted liner must be fixed to at least 2 supports inboard of the cantilever. For other profiles consult Euro Clad Ltd.





TITLE: Vieo Warm Roof (Onto MW5 Inverted Liner Upslope)

DWG NO: V3_WR_ILU_System

SCALE: NTS

ISSUE DATE: Feb 2019

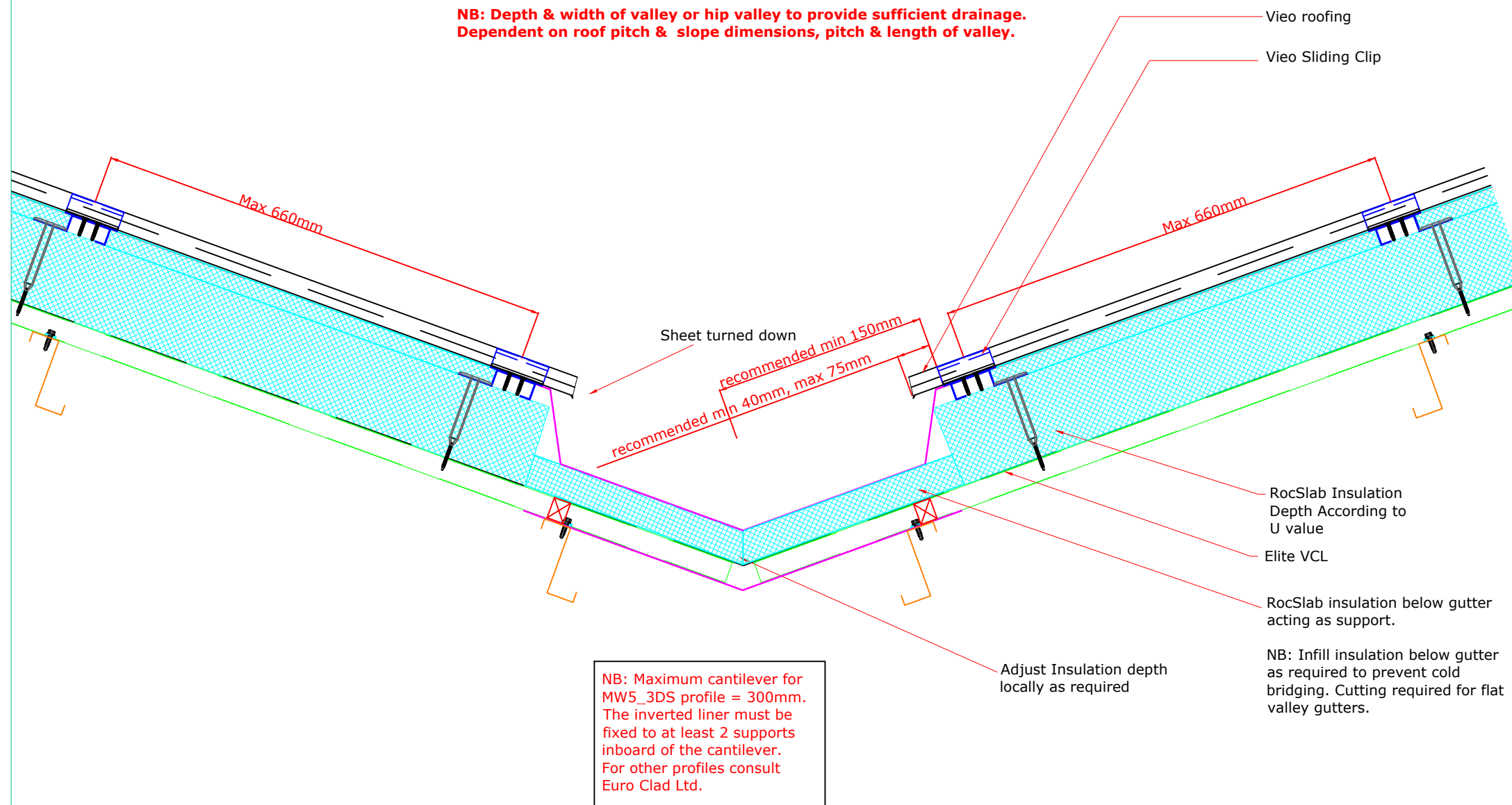
Drawn by: CD Checked by: MP

(To be read in conjunction with Vieo system specification documents)

**Euroclad Group Ltd,
Wentloog Corporate Park,
Wentloog Road, Cardiff CF3 2ER
Tel: +44 (0)2922 010101
Fax: +44 (0)2922 010122
Website: www.vieorooft.com**

This draft drawing has been supplied by Euro Clad Ltd for the purpose of guidance free of charge. It is a suggested typical detail and as such should not be assumed suitable for any specific project or application. No responsibility is assumed for errors or misinterpretations resulting from the information contained in the drawing. Details are for illustration only and no liability is accepted. We reserve the right to change the details without notice. The drawing is copyright, it remains our property.

**NB: Depth & width of valley or hip valley to provide sufficient drainage.
Dependent on roof pitch & slope dimensions, pitch & length of valley.**

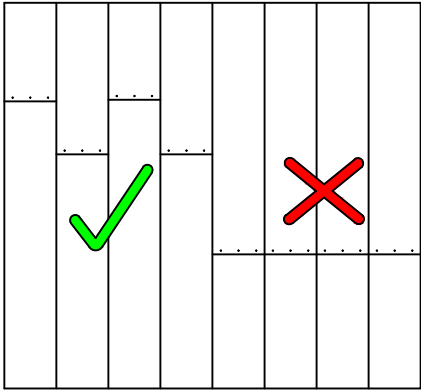
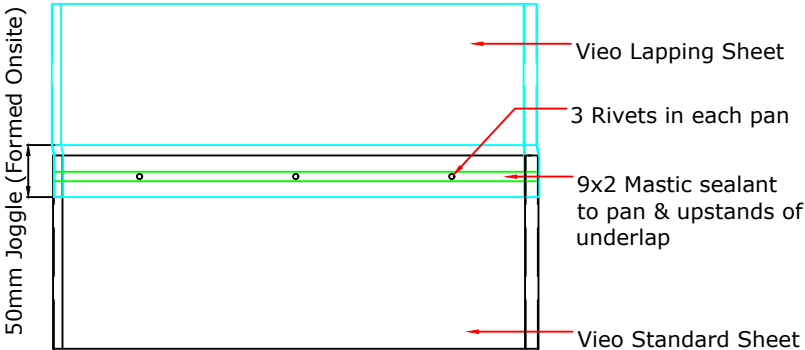




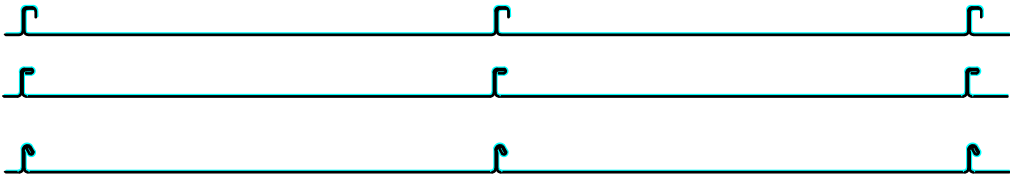
TITLE: Vioo Warm Roof (Onto MW5 Inverted Liner Upslope)	(To be read in conjunction with Vioo system specification documents)	Euroclad Group Ltd, Wentloog Corporate Park, Wentloog Road, Cardiff CF3 2ER Tel: +44 (0)2922 010101 Fax: +44 (0)2922 010122 Website: <u>www.vioorooft.com</u>
DWG NO: V3_WR_ILU_System		
SCALE: NTS		
ISSUE DATE: Feb 2019		
Drawn by: CD Checked by: MP		
<small>This draft drawing has been supplied by Euro Clad Ltd for the purpose of guidance free of charge. It is a suggested typical detail and as such should not be assumed suitable for any specific project or application. No responsibility is assumed for errors or misinterpretations resulting from the information contained in the drawing. Details are for illustration only and no liability is accepted. We reserve the right to change the details without notice. The drawing is copyright, it remains our property.</small>		

**RIVET ENDLAP DETAIL ONLY SUITABLE
FOR PITCHES = />5°**

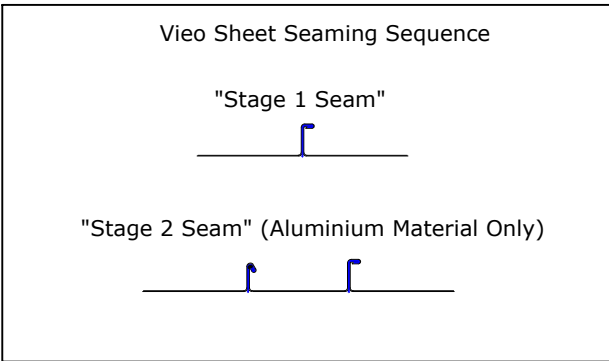
For advice on fixed point locations please contact Euroclad Technical



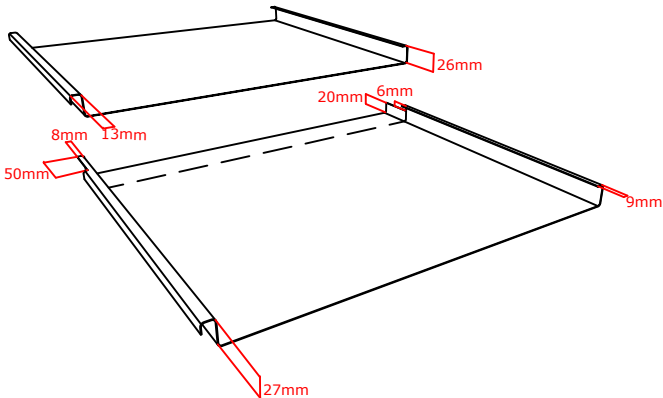
Lap joints must be staggered at least 100mm apart
Clips minimum 100mm from joint



SEAMING OPTIONS AT END LAP



Vio Sheets cut on site prior to jointing





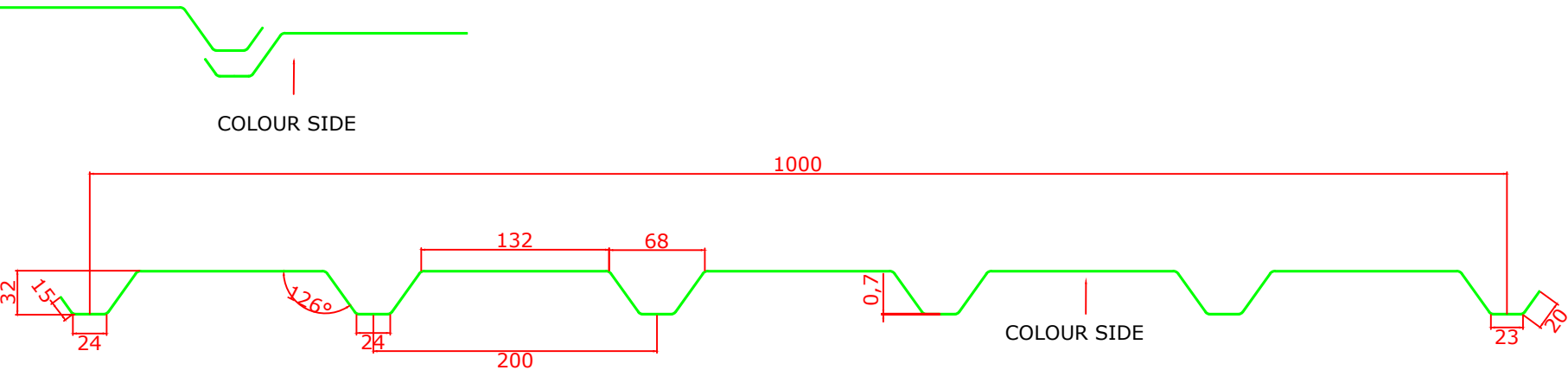
TITLE: Vieo Warm Roof (Onto MW5 Inverted Liner Upslope)
DWG NO: V3_WR_ILU_System
SCALE: NTS
ISSUE DATE: Feb 2019

(To be read in conjunction with Vieo system specification documents)

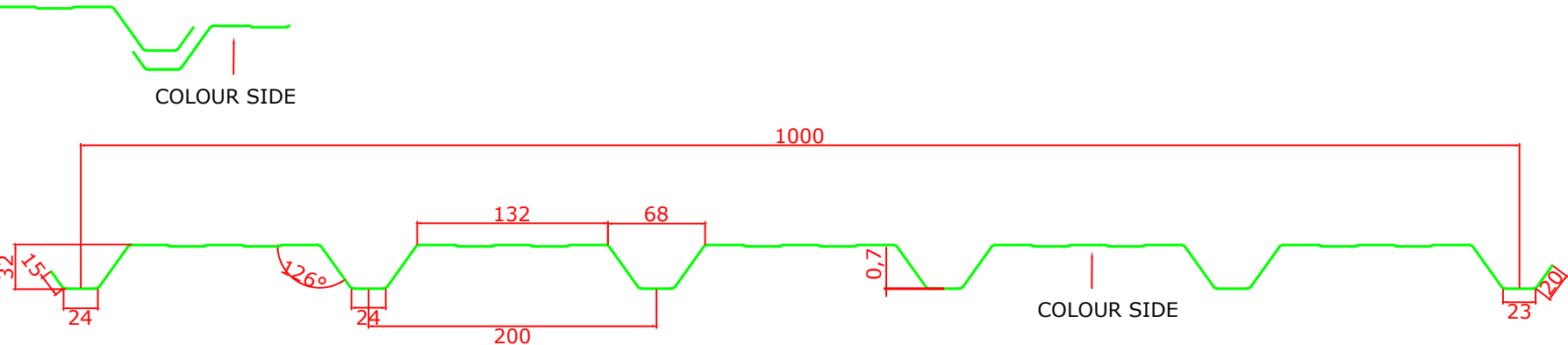
Euroclad Group Ltd,
Wentloog Corporate Park,
Wentloog Road, Cardiff CF3 2ER
Tel: +44 (0)2922 010101
Fax: +44 (0)2922 010122
Website: www.vieorooft.com

This draft drawing has been supplied by Euro Clad Ltd for the purpose of guidance free of charge. It is a suggested typical detail and as such should not be assumed suitable for any specific project or application. No responsibility is assumed for errors or misinterpretations resulting from the information contained in the drawing. Details are for illustration only and no liability is accepted. We reserve the right to change the details without notice. The drawing is copyright, it remains our property.

MW5_3D DECK PROFILE 0.7MM



STANDARD SUPPLY
MW5_3DS DECK SWAGED PROFILE 0.7MM





TITLE: Vieo Warm Roof (Onto MW5 Inverted Liner Upslope)

DWG NO: V3_WR_ILU_System

SCALE: NTS

ISSUE DATE: Feb 2019

Drawn by: CD Checked by: MP

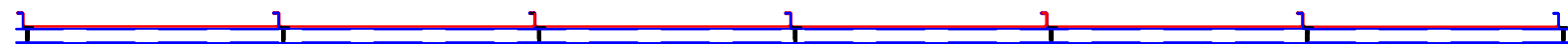
(To be read in conjunction with Vieo system specification documents)

**Euroclad Group Ltd,
Wentloog Corporate Park,
Wentloog Road, Cardiff CF3 2ER
Tel: +44 (0)2922 010101
Fax: +44 (0)2922 010122
Website: www.vieoroof.com**

This draft drawing has been supplied by Euro Clad Ltd for the purpose of guidance free of charge. It is a suggested typical detail and as such should not be assumed suitable for any specific project or application. No responsibility is assumed for errors or misinterpretations resulting from the information contained in the drawing. Details are for illustration only and no liability is accepted. We reserve the right to change the details without notice. The drawing is copyright, it remains our property.

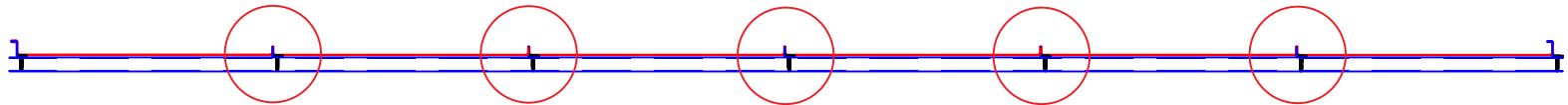
STEP 1

Damaged sheets in red



STEP 2

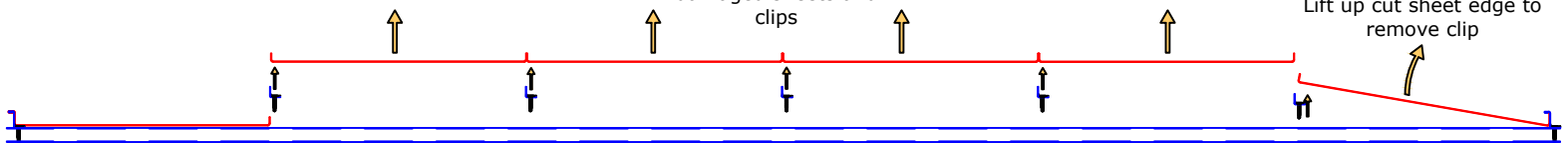
Cut off upstands of damaged sheets



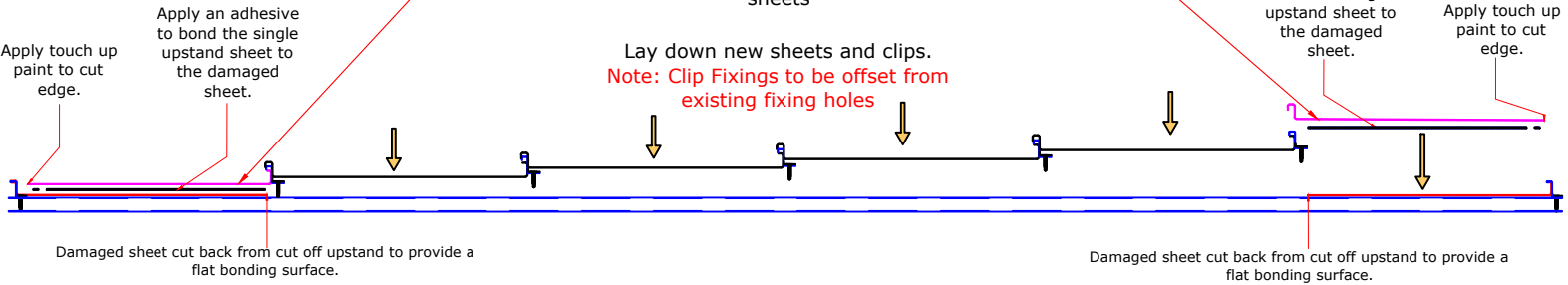
STEP 3

Remove the central damaged sheets and clips

Lift up cut sheet edge to remove clip



STEP 4



STEP 5

New sheets in place

