

Kingspan DCS1

Cold storage doors (sliding)

Cold storage doors (sliding, single leaf) for use in buildings where the required interior temperature range is 0°C to +16°C.





Technical information:

Temperature range:

- For use in buildings where the required interior temperature range is 0°C to +16°C

Door leaf:

- Door leaf thickness: 80 mm, 100 mm
- Galvanized steel covered with 25 µm PES coating in R9002/ R9010; protection foil.
- Other material can be used, e.g. INOX stainless steel, 150 µm FoodSafe chemically inert coating for interior and food contact applications, etc.
- Foamed-in-place polyurethane insulation of 42 (+/- 2) kg/m³ density
- Rounding gasket to seal the contact point between the door leaf and the frame.
- Bottom gasket to seal the space between the door leaf and the threshold
- As options, you can order: a safe lock, an additional lever supporting opening, an automation kit, an insulated inner frame, an outer shell in a different available color, etc.

Door frame:

- Fitted onto the opening.
- Galvanized steel covered with 25 µm PES coating in R9002/ R9010; protection foil.
- Foamed-in-place polyurethane insulation of 50 (+/- 2) kg/m³ density
- Single or double frame depending on door size.

Hardware:

- Provided by FERMOND, French leader in hardware for refrigeration industry.
- Holdfasts mounted in the floor.
- Door adjustment with out disassembly.

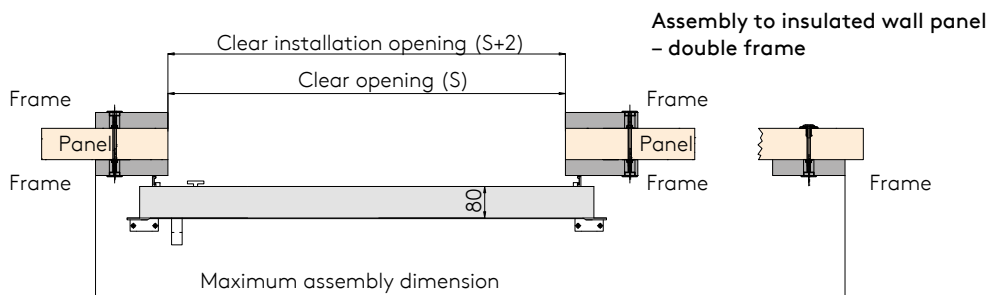
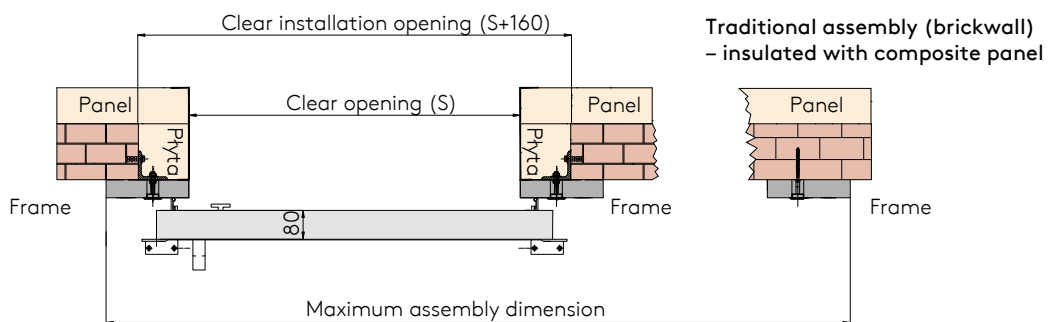
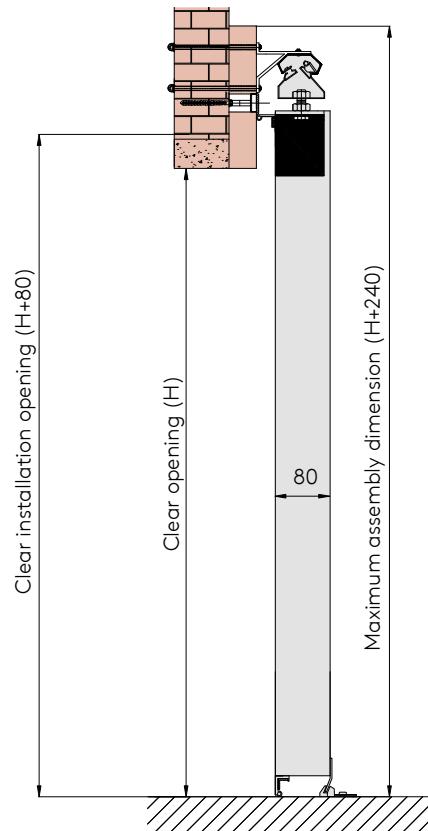
Standard dimensions range:

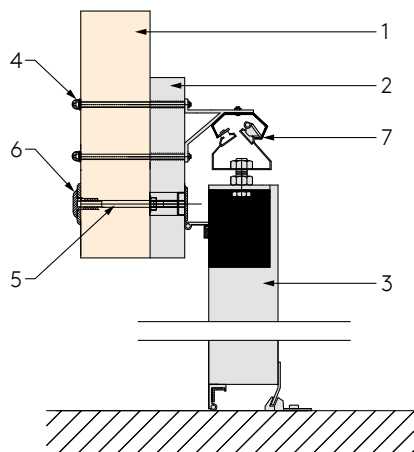
- min: 1000x2000 mm
- max: 3100x3500 mm
- Dimensions other than standard.



Drawings of installation:

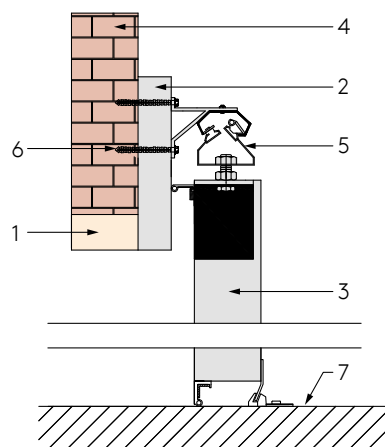
Traditional assembly (brickwall)
– insulated with composite panel



Assembly to insulated panel,
aluminum rail - one-sided frame

- 1 - Insulated wall panel
- 2 - Frame
- 3 - Door leaf
- 4 - Plug
- 5 - M10 steel bar
- 6 - Castel screw
- 7 - Rail

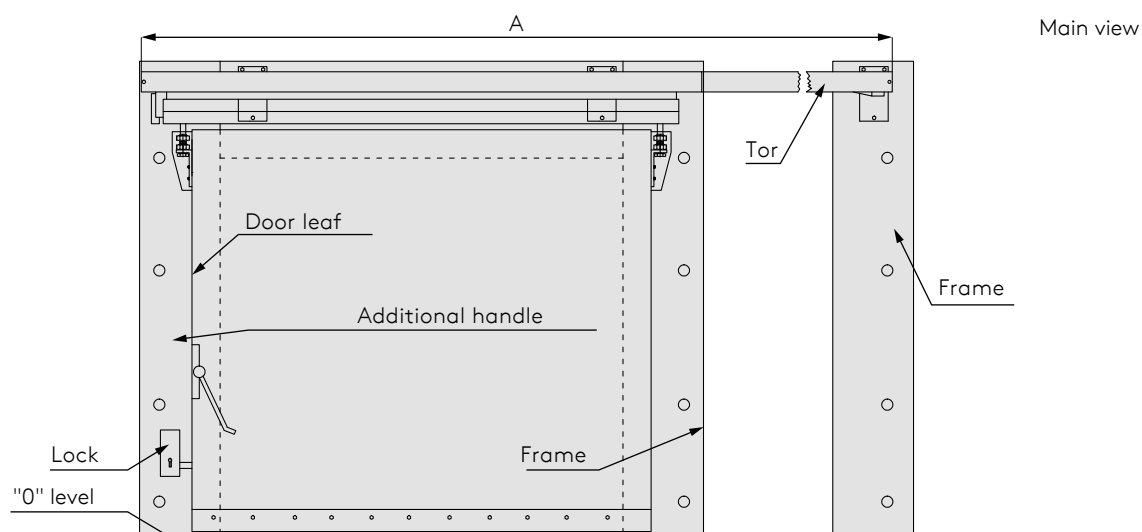
Traditional assembly (brickwall)



- 1 - Insulated wall panel
- 2 - Frame
- 3 - Door leaf
- 4 - Brickwall
- 5 - Rail
- 6 - Expansion anchoror through pin
(optional for low wall thickness)
- 7 - "0" level

Max. width of the steel rail

Door width	1600-1900	1901-2200	2201-2500	2501-2800	2801-3100
A	4350 (mm)	4950 (mm)	5550 (mm)	6150 (mm)	6750 (mm)



Installation guide:

1. Unpack the door.
2. For a description of the product and verify its compliance with the order and description (width, height, direction of opening).
3. Become familiar with this document and the assembly instructions of the rail system.
4. Check the dimensions of the hole in the wall and the space necessary for the operation of the door recommended by the manufacturer.
5. Locate the outer doorframe (on the cross-bar frames, from the closure, its marked the mounting point of handles of the door rail)
6. Clean and align the edges and surfaces of the prepared hole.
7. Check the floor level in the work area of the door panel. In the case of absence of the target forms on floor, should be appropriate mounting slot.
8. In the case of freezing door to check the dimensions and quality of the hole under the threshold (door light dimensions + 400 mm x 100 mm + x 60 mm). The hole should be suitably increased to allow for adequate "concreting" threshold.
NOTE: When the outside floor, be sure to expansion gaps between the threshold and the floor.
9. Remove the technological bar placed between the legs of the transportation time frames (cold store doors)
10. Set the frame in a pre-selected location in the wall, where is light of door, prepared hole and immobilize.
11. Correct the errors preset frame in the hole and fix it with quick mounting brackets.
12. Determine and execute the mounting holes for rods of ertalon(mounting in to panel) or anchors (mounted to the wall).
13. Assembly the flashings in case of instalation on to panel. In case of freezer door, do additional incisions on the body chamber (cut thermal bridge) in place of mounting frames.
14. Set the frame in a selected hole, location in the light of doors eqarlier prepared and fix with quick mounting bracket. At the freezer door do you have to remember about threshold that must be set set flush with the floor and concrete.
15. Assemble the frame arms.
16. Make holes for mounting the suspension of the track
 - For the aluminum rail is marked with a point outside the bracket.
 - For steel rail is marked with the lower point of the handle
17. During installing rail system and clamps follow under the instructions that came with the rail keeping in mind that:
 - designation E is the thickness of the door leaf;
 - designation R is a overlaping door leaf on to the frame = 70 mm
18. At the end of the rail system, assembly in an upright position a "third" leg of frame.
19. Assembly door leaf on to the rail system.
20. In the case of door supplied mounted on a track nickel buffers for supporting the lever to open
21. Install the lock according to the instructions provided (optional)
22. Check how is door sliding on the fram - depending on the situation, make appropriate adjustments.
23. Fill the gap between the frame and the wall (frame and panel) with silicone.
24. Plug holes.
25. When installing a door with automatic, assembly automation should be made by a person with appropriate permissions. Follow the instructions provided.

Maintenance:

Recommendations:

- At least twice a year you should smear lubricant on all hinges and a lock.
- At least twice a year you should preserve gasket with a substance for sealant preservation.
- You should fill in a loss of lacquer or zinc layer (which has been cased by scratches) to prevent the product from corrosion. Losses should be filled in with commonly-used anticorrosion paints.
- For door should not act directly to weather conditions (rain, snow, sun) and should be protected at least a roof that protects for mention conditions.

Transport and storage of doors:

- You should exercise extreme caution while door transport and storage.
- Loading room should be clean and no sharp elements should stick out of the floor and walls to prevent doors from damage.
- Doors for transport (storage) should be laid vertically (separately) or horizontally – maximum 5 layers separated with a protective separator (standard-sized doors are packed in a carton box). In cases of big-sized doors, transport and storage should be arranged on a special rack.
- Doors that have been loaded on a truck should be belted to the vehicle in such a way that stability is ensured and goods are prevented from movement and damages during transport.
- Storage place should be dry and airy; apart from this it should shelter doors from rain, snow and sunlight.

Poland:

Kingspan Sp. z o.o.
ul. Przemysłowa 20
27-300 Lipsko
tel.: +48 48 378 31 00
fax: +48 48 378 13 30
www.kingspan.pl

Estonia:

Kingspan OÜ
Mustamäe tee 55
10621 Tallinn
Tel (+372) 6516661
info@kingspan.ee
www.kingspan.ee

Latvia:

Kingspan Latvia
Kronvalda bulv. 3-1
LV-1010 Riga
Tel: +371 28393 333
info@kingspan.lv
www.kingspan.lv

Lithuania:

UAB Kingspan
Neries kr. 16
LT-48402, Kaunas
Tel: +370 66 565 862
info@kingspan.lt
www.kingspan.lt

Ukraine:

ТОВ «Кінгспан-Україна»
79029 м. Львів
вул. Героїв УПА, 73,
корпус 8, офіс 428-429
email: info@kingspan.ua

Information about the product offer in others countries can be obtained from your local sales representative or on the website **www.kingspan.com**

Although Kingspan makes every effort to provide information contained in this publication were as accurate as possible, correct and complete, please note that its content should not be the basis of the procedure in any particular case. Any advice, opinions, information or other content is published solely based on the principle that neither the company, its employees or representatives, or people who contributed to the uprising of this publication, do not assume any liability for its content or any damage caused in connection with this content.

02/2023 (v3)

To ensure you are viewing the most recent and accurate product information, please scan the QR code:

