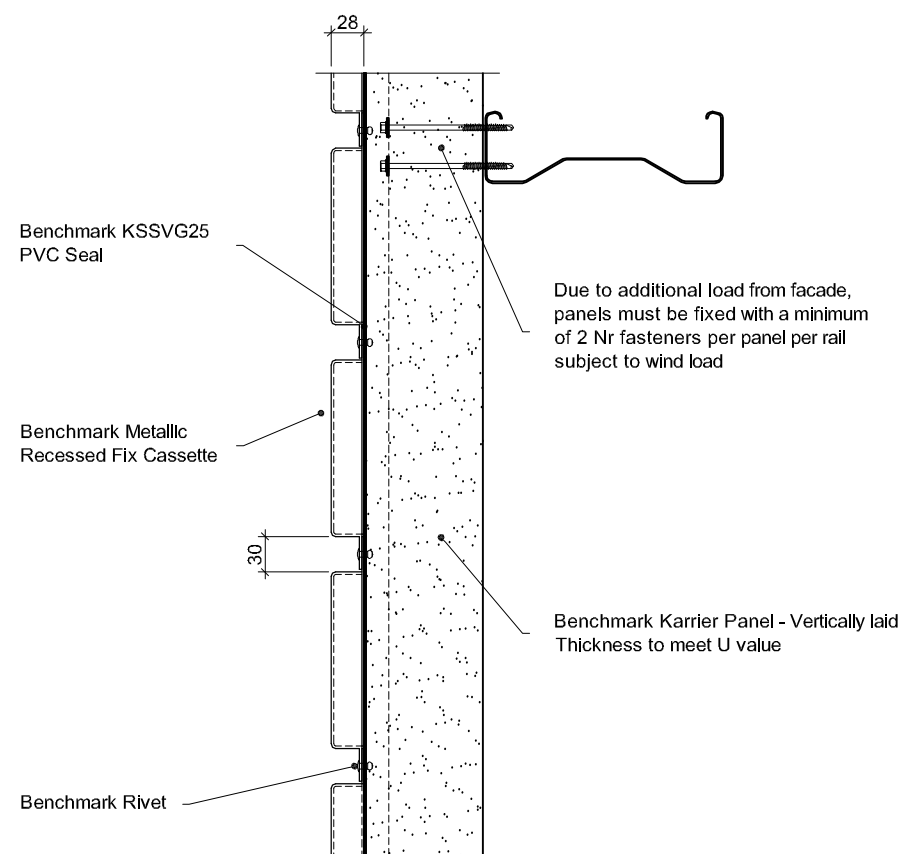


PLAN SECTION THROUGH



CROSS SECTION THROUGH

Material, Gauges and Finishes and Colours

Please refer to latest product guide and website. The direct method of installation is unsuitable for cassettes manufactured from zinc or from Corten.

Panel Sizes and Tolerances

Depends on material choice - please refer to current data sheet.

Structural Rails

Design for lateral loads and for gravity load of façade system. System weights are provided in current product data sheets.

Dissimilar Metals

Contact between dissimilar metals must be prevented with PVC isolation tape.

Handling

The surface of certain metals such as zinc and copper are susceptible to finger marking. Suitable clean gloves should be worn when handling these materials.

Open Edges

Open edges should be fitted with insect mesh

Cavity Barriers

Cavity barriers are not supplied with the Benchmark Facade system and must be specified and sourced separately.

Steelwork Tolerances

The permissible steelwork tolerance between the bearing planes of adjacent supports is $\pm 5\text{mm}$

Project:

System: Metallic Recessed Fix + Karrier Panel

Drawing Title: System Layout

Drawn By: AE

Date: 15/03/2012

Drawing No.: MRF Direct KP Vt 001

Rev: 0

Greenfield Business Park No.2

Greenfield, Holywell

Flintshire. CH8 7GJ

Tel: 01352 716 100

Fax: 01352 710 161

Technical: 0800 970 9036

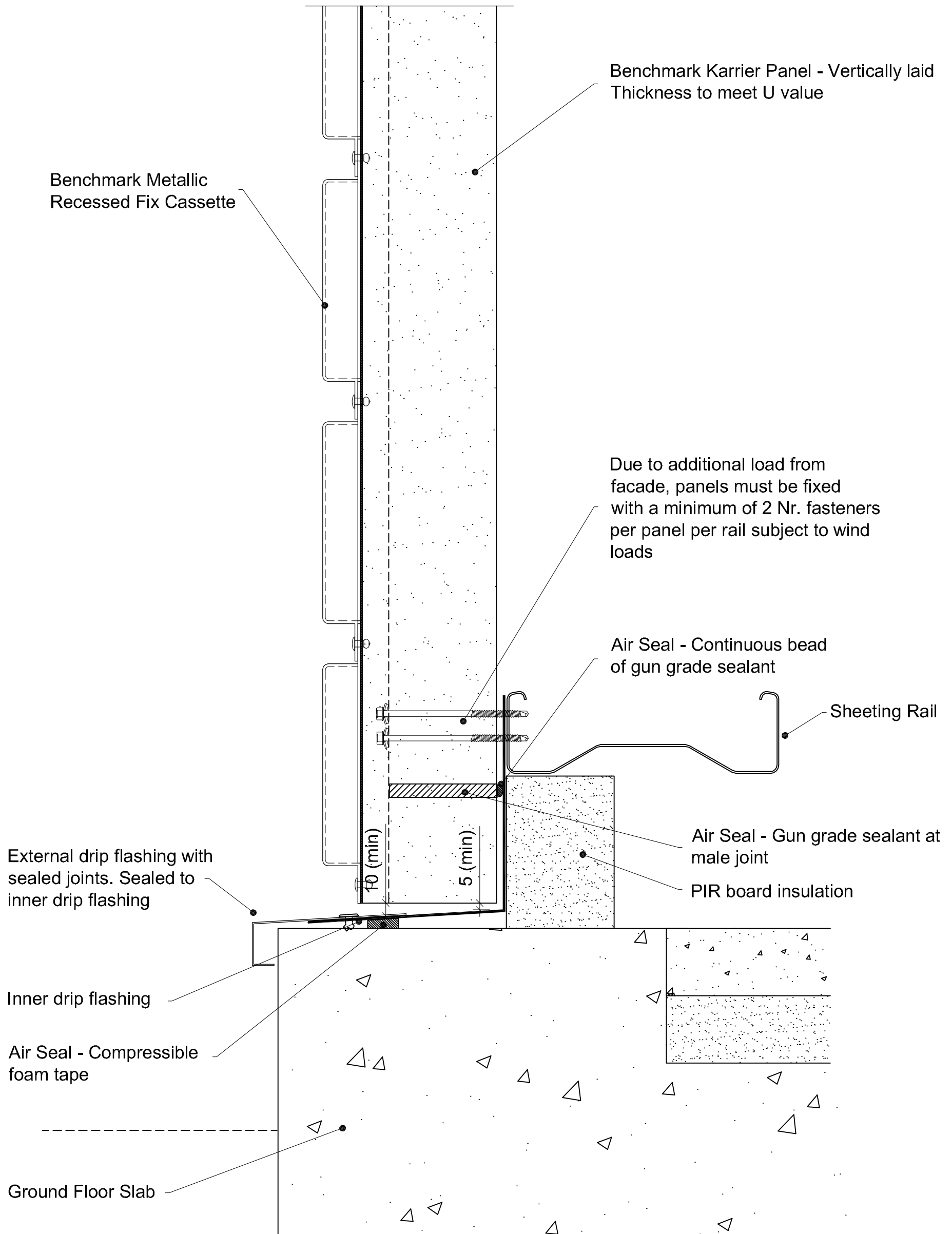
Email: technical@kingspanbenchmark.com

Website: www.kingspanbenchmark.com

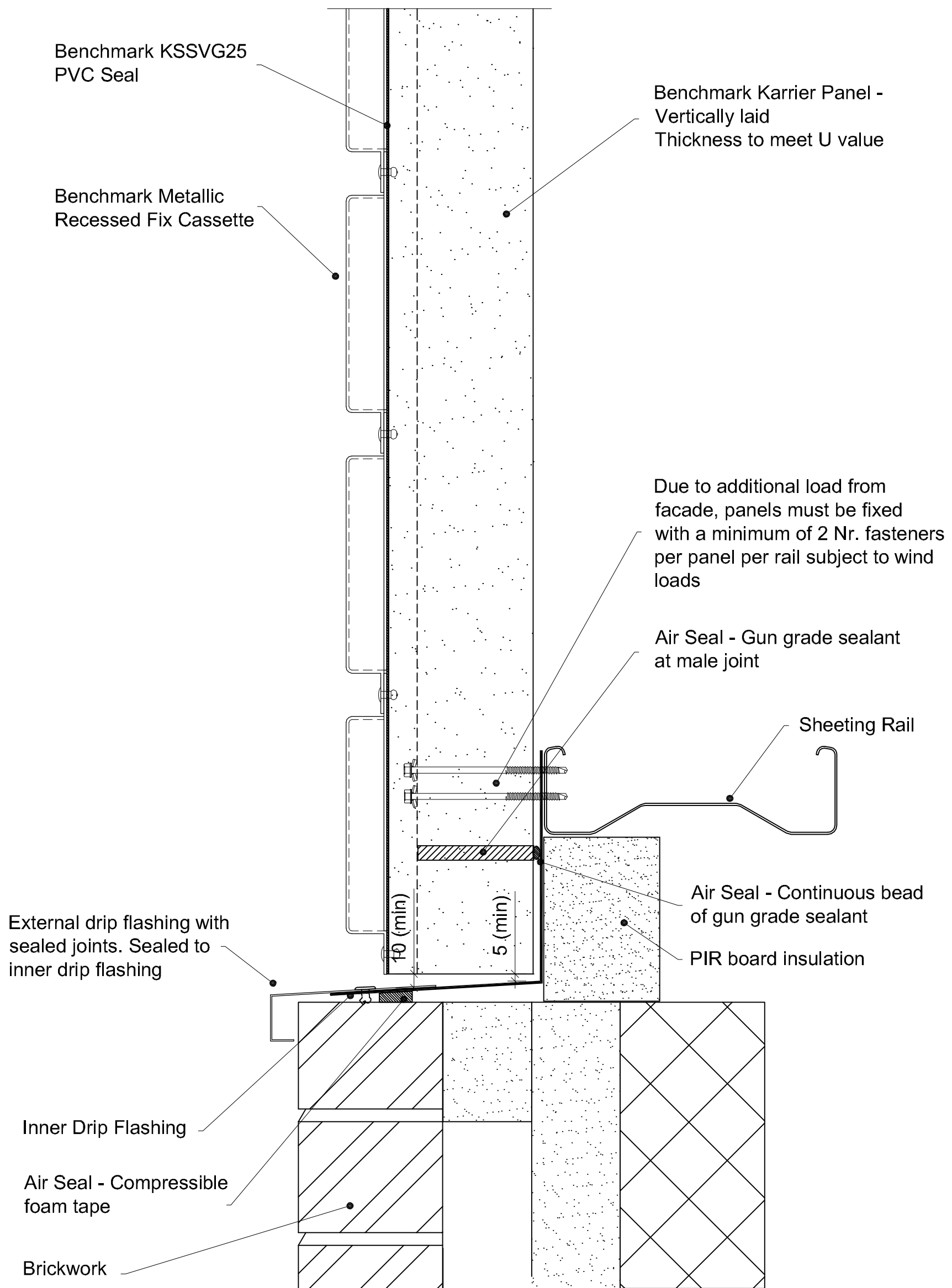



By Kingspan

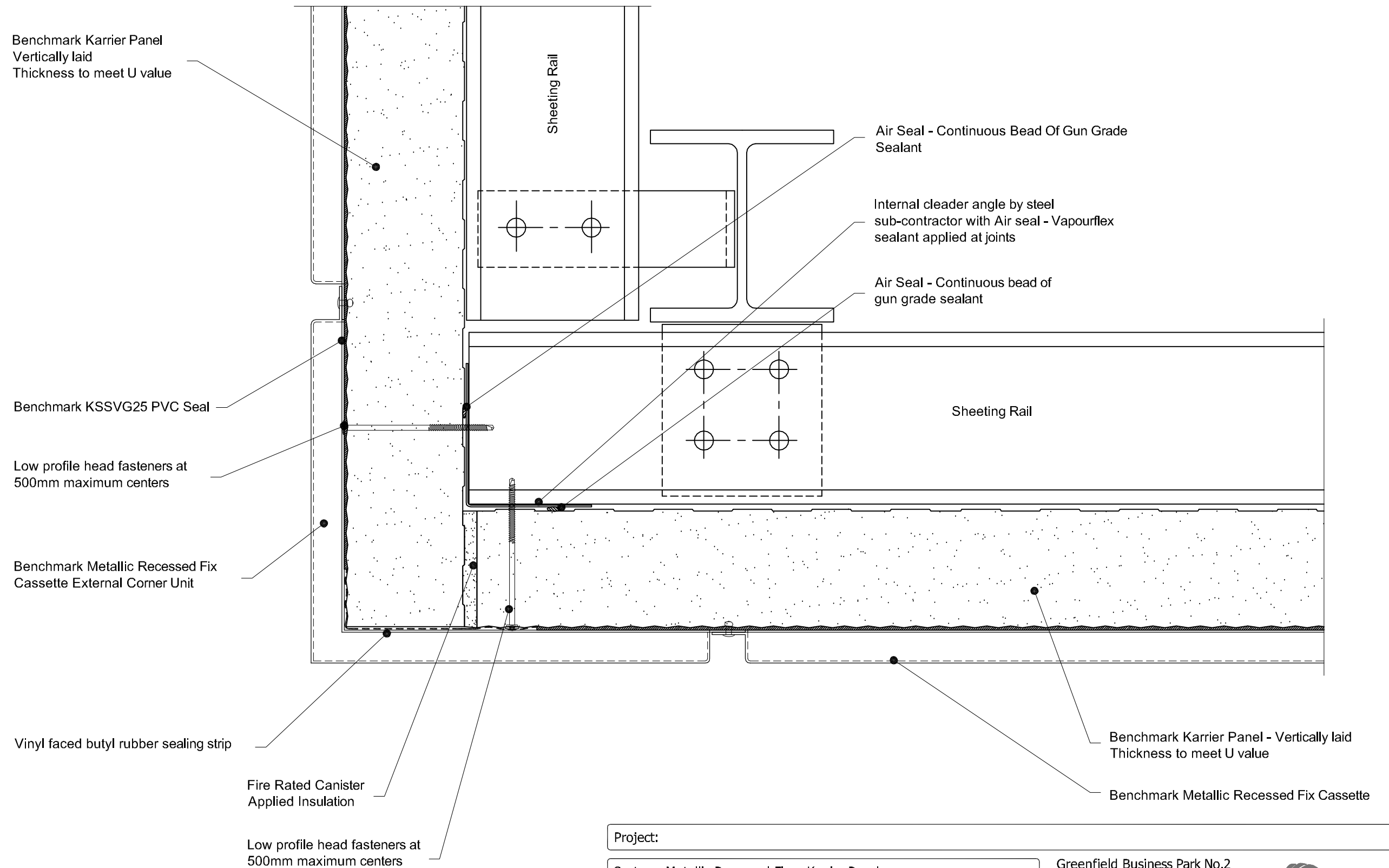
© Kingspan 2013



Project:		Greenfield Business Park No.2 Greenfield, Holywell Flintshire. CH8 7GJ Tel: 01352 716 100 Fax: 01352 710 161 Technical: 0800 970 9036 Email: technical@kingspanbenchmark.com Website: www.kingspanbenchmark.com	
System: Metallic Recessed Fix + Karrier Panel		 <p>By Kingspan</p> <p>© Kingspan 2013</p>	
Drawing Title: Drip Detail			
Drawn By: AE	Date: 15/03/2012		
Drawing N ^o .: MRF Direct KP Vt 002	Rev: 0		



Project:			
System: Metallic Recessed Fix + Karrier Panel		Greenfield Business Park No.2 Greenfield, Holywell Flintshire. CH8 7GJ Tel: 01352 716 100 Fax: 01352 710 161 Technical: 0800 970 9036 Email: technical@kingspanbenchmark.com Website: www.kingspanbenchmark.com	
Drawing Title: Drip Detail		 <p>By Kingspan</p> <p>© Kingspan 2013</p>	
Drawn By: AE	Date: 15/03/2012		
Drawing N ^o .: MRF Direct KP Vt 003	Rev: 0		



Project:

System: Metallic Recessed Fix + Karrier Panel

Drawing Title: External Corner

Drawn By: AE

Date: 15/03/2012

Drawing N°. : MRF Direct KP Vt 004

Rev: 0

Greenfield Business Park No.2

Greenfield, Holywell

Flintshire. CH8 7GJ

Tel: 01352 716 100

Fax: 01352 710 161

Technical: 0800 970 9036

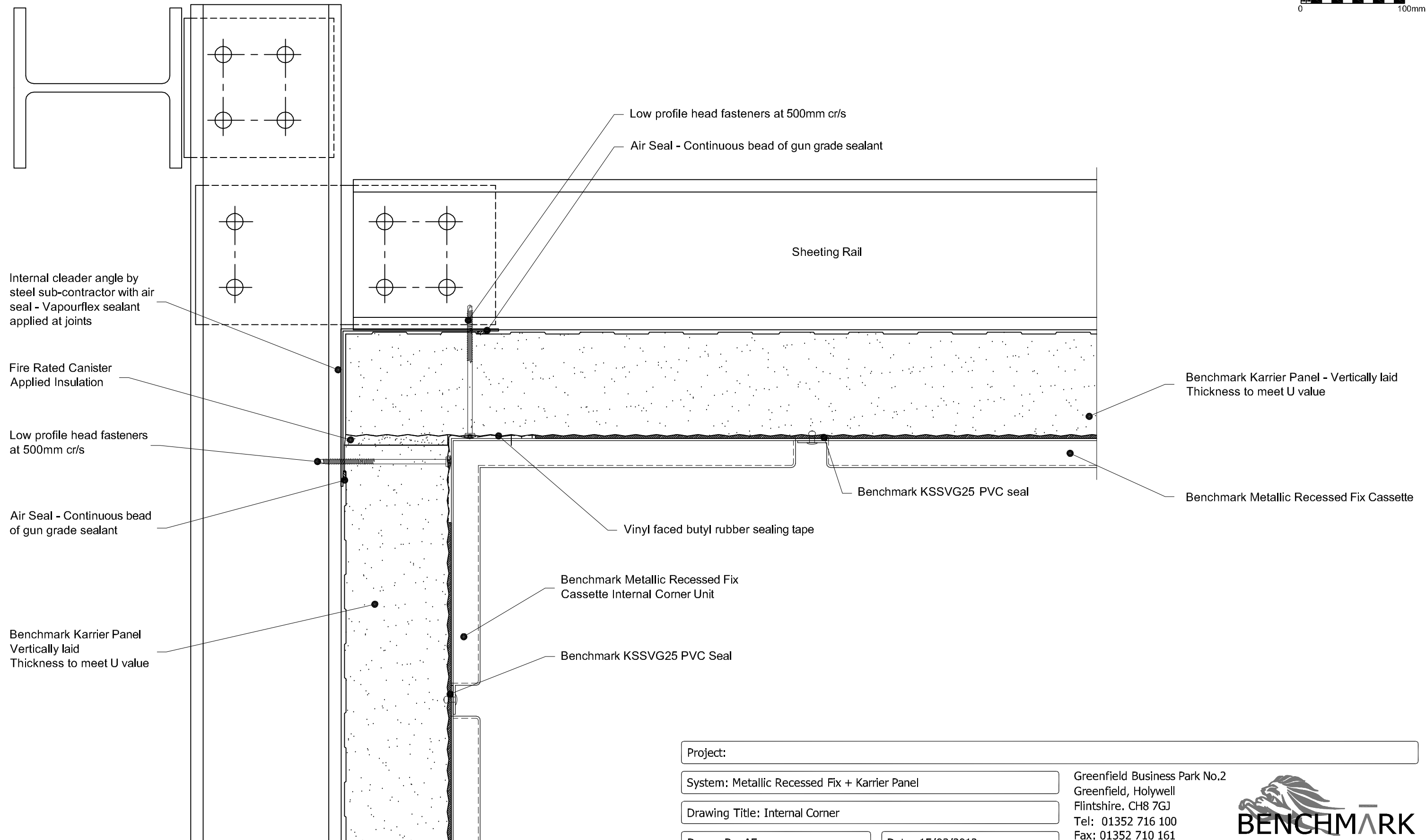
Email: technical@kingspanbenchmark.com


Website: www.kingspanbenchmark.com

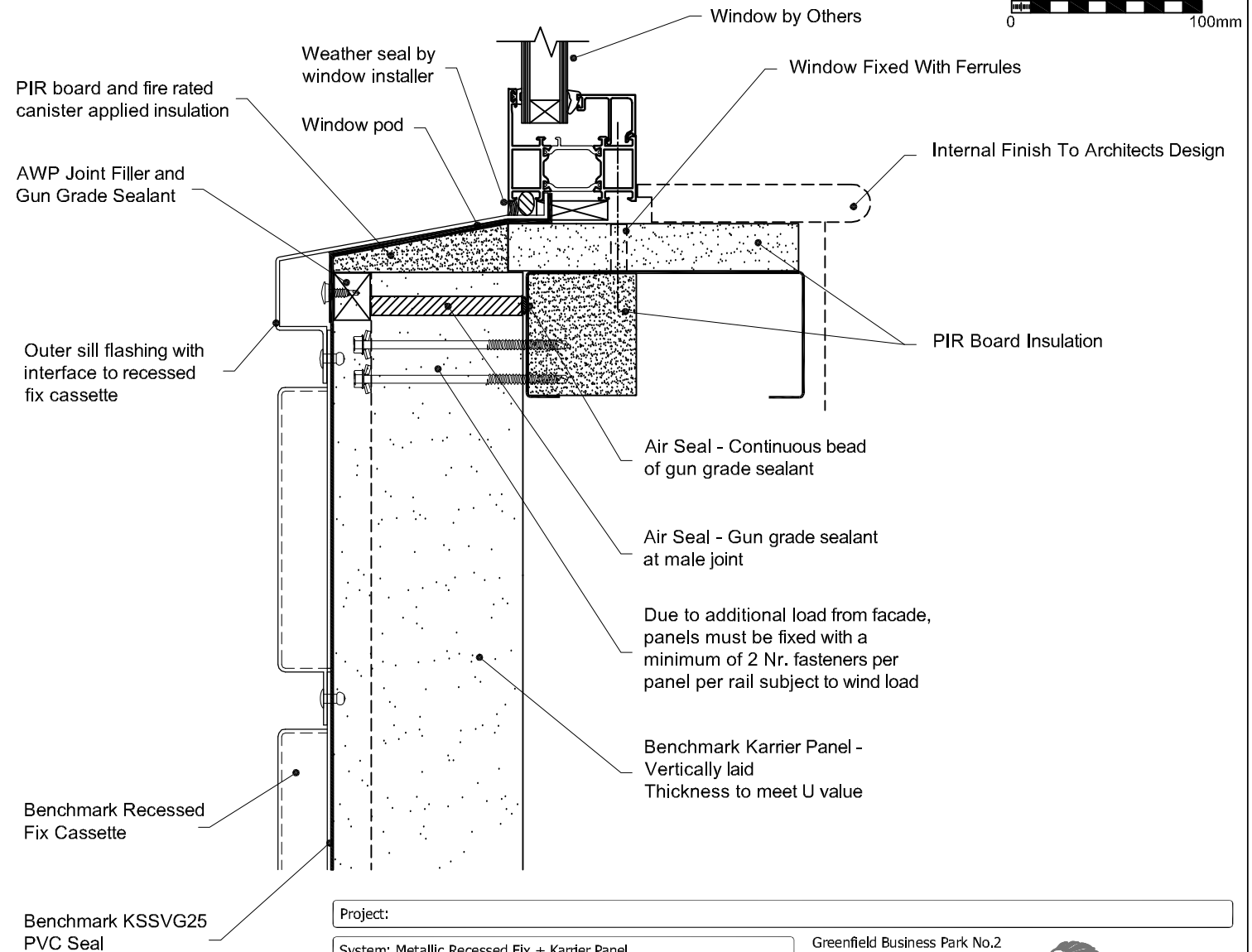


By Kingspan

© Kingspan 2013



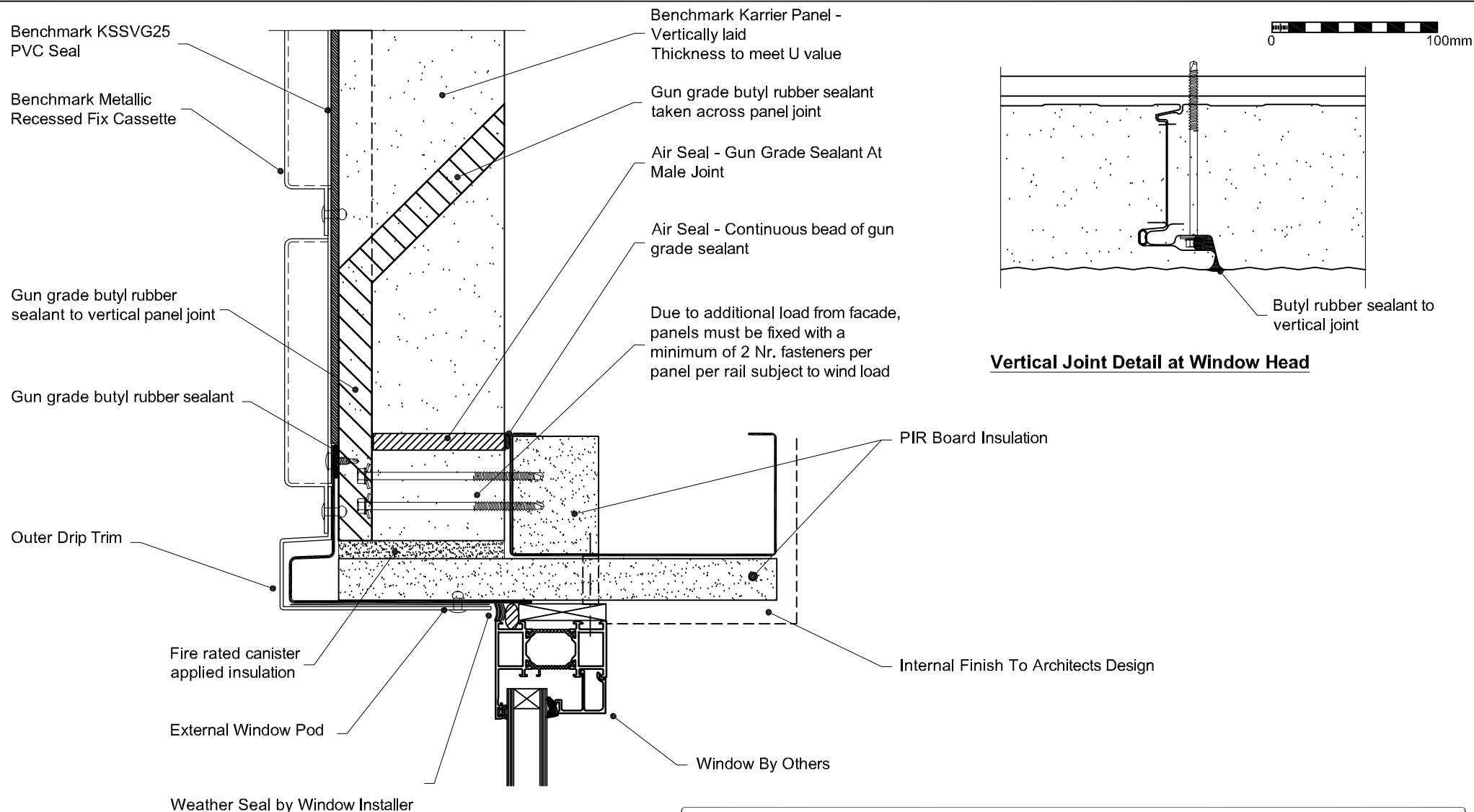
Project:		<div><p>Greenfield Business Park No.2 Greenfield, Holywell Flintshire. CH8 7GJ Tel: 01352 716 100 Fax: 01352 710 161 Technical: 0800 970 9036 Email: technical@kingspanbenchmark.com Website: www.kingspanbenchmark.com</p><p>By Kingspan</p><p>© Kingspan 2013</p></div>	
System: Metallic Recessed Fix + Karrier Panel			
Drawing Title: Internal Corner			
Drawn By: AE	Date: 15/03/2012		
Drawing N°. : MRF Direct KP Vt 005	Rev: 0		



Project:	
System: Metallic Recessed Fix + Karrier Panel	
Drawing Title: Window Sill	
Drawn By: AE	Date: 15/03/2012
Drawing N°.: MRF Direct KP Vt 006	Rev: 0

Greenfield Business Park No.2
Greenfield, Holywell
Flintshire, CH8 7GJ
Tel: 01352 716 100
Fax: 01352 710 161
Technical: 0800 970 9036
Email: technical@kingspanbenchmark.com
Website: www.kingspanbenchmark.com

BENCHMARK
By Kingspan
© Kingspan 2013



Vertical Joint Detail at Window Head

Note

Vertical panel joints above window pod to be sealed with butyl rubber sealant (see detail).

Project:

System: Metallic Recessed Fix + Karrier Panel

Drawing Title: Window Head

Drawn By: AE

Date: 15/03/2012

Drawing N^o.: MRF Direct KP Vt 007

Rev: 0

Greenfield Business Park No.2
Greenfield, Holywell
Flintshire, CH8 7GJ
Tel: 01352 716 100
Fax: 01352 710 161

Technical: 0800 970 9036

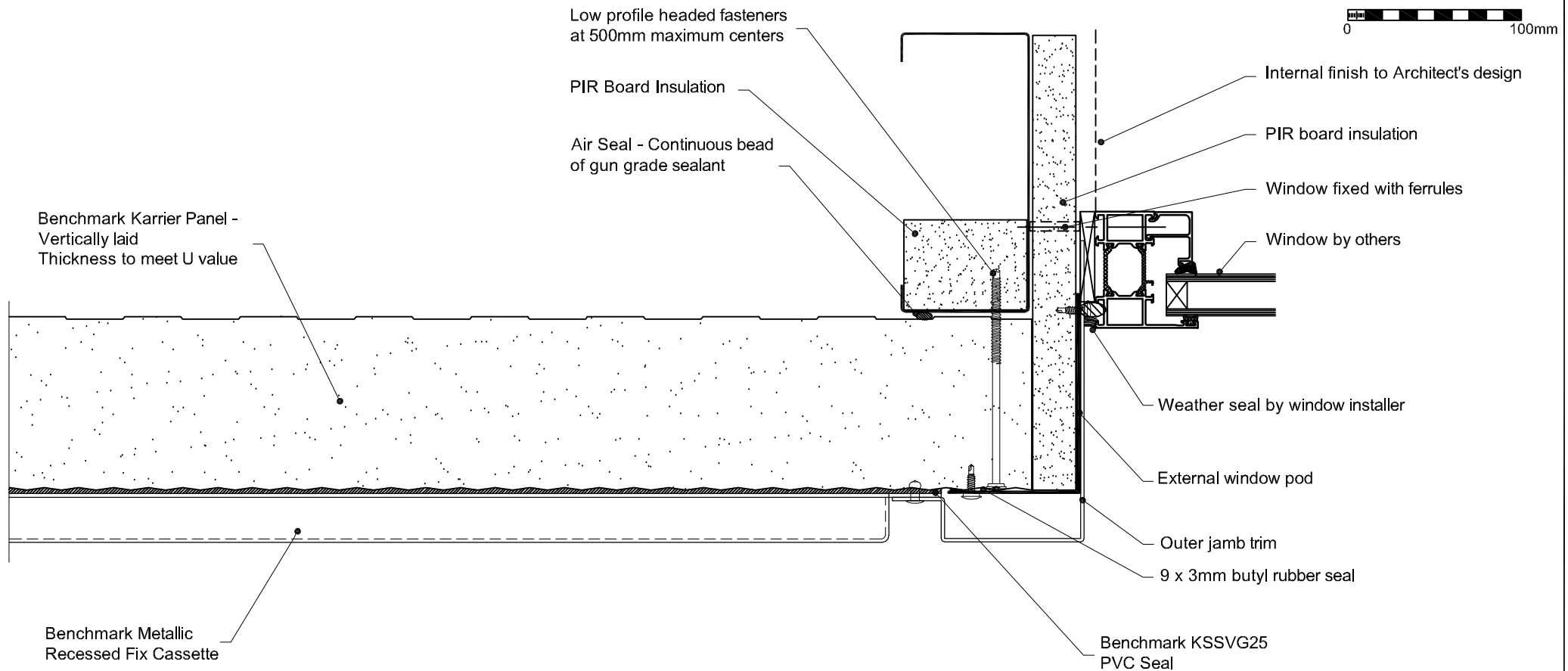
Email: technical@kingspanbenchmark.com

Website: www.kingspanbenchmark.com



By Kingspan

© Kingspan 2013



Project:	
System: Metallic Recessed Fix + Karrier Panel	
Drawing Title: Window Jamb	
Drawn By: AE	Date: 15/03/2012
Drawing N ^o .: MRF Direct KP Vt 008	Rev: 0

Greenfield Business Park No.2
Greenfield, Holywell
Flintshire, CH8 7GJ
Tel: 01352 716 100
Fax: 01352 710 161
Technical: 0800 970 9036
Email: technical@kingspanbenchmark.com
Website: www.kingspanbenchmark.com

BENCHMARK
By Kingspan
© Kingspan 2013

Benchmark KSSVG25
PVC Seal

Benchmark Metallic
Recessed Fix Cassette

Gun grade butyl rubber
sealant to vertical panel joint

Gun grade butyl rubber sealant

Outer Drip Trim

Fire rated canister
applied insulation

External door pod

Weather seal by door installer

Benchmark Karrier Panel -
Vertically laid
Thickness to meet U value

Gun grade butyl rubber sealant
taken across panel joint

Air Seal - Gun grade sealant at
male joint

Air Seal - Continuous bead of gun
grade sealant

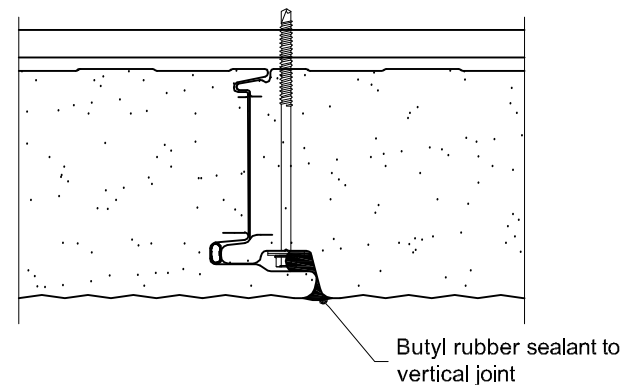
Due to additional load from facade,
panels must be fixed with a
minimum of 2 Nr. fasteners per
panel per rail subject to wind load

PIR board insulation

Internal finish to Architects design

Door by others

0 100mm



Vertical Joint Detail at Door Head

Note

Vertical panel joints above window pod to be sealed with butyl rubber sealant (see detail).

Project:

System: Metallic Recessed Fix + Karrier Panel

Drawing Title: Door Head

Drawn By: AE

Date: 15/03/2012

Drawing N°. : MRF Direct KP Vt 009

Rev: 0

Greenfield Business Park No.2
Greenfield, Holywell
Flintshire, CH8 7GJ
Tel: 01352 716 100
Fax: 01352 710 161

Technical: 0800 970 9036

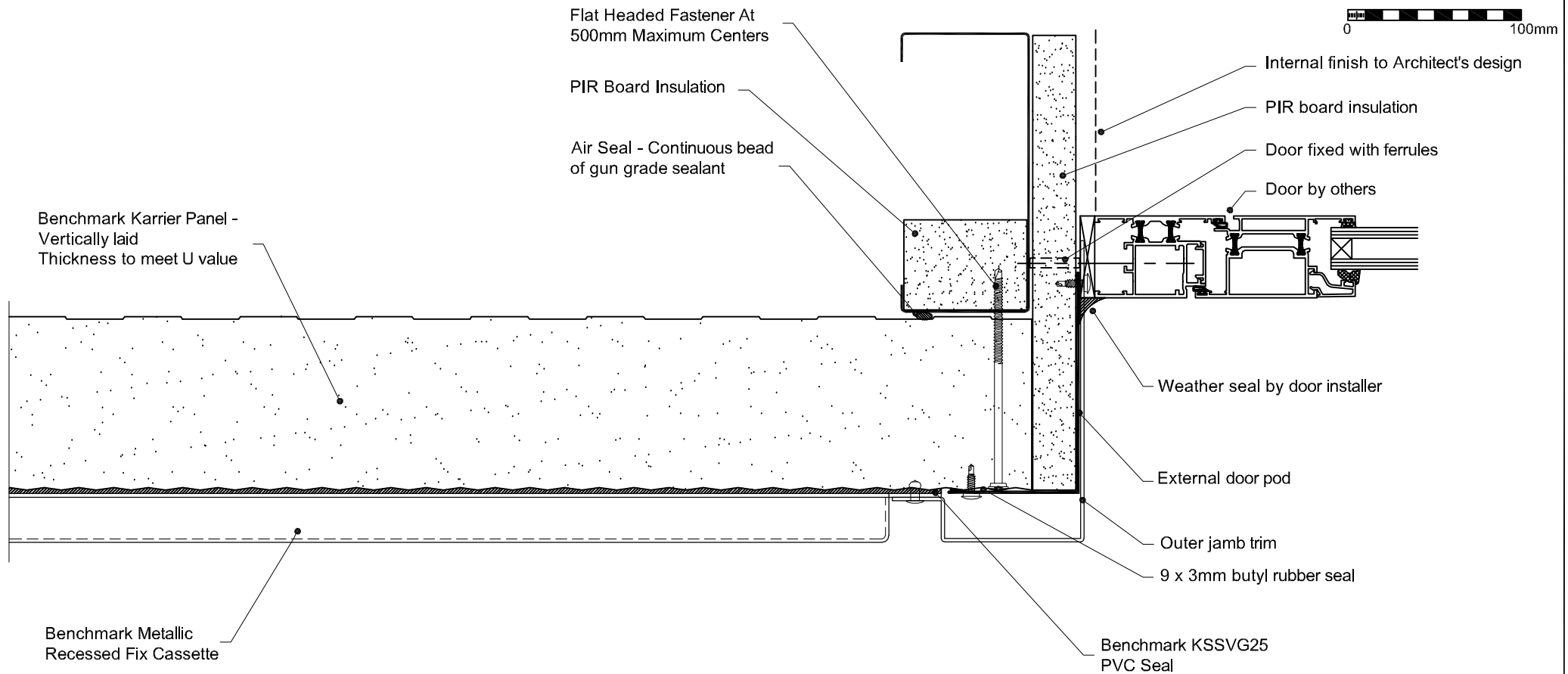
Email: technical@kingspanbenchmark.com

Website: www.kingspanbenchmark.com



By Kingspan

© Kingspan 2013



Project:

System: Metallic Recessed Fix + Karrier Panel

Drawing Title: Door Jamb

Drawn By: AE

Date: 15/03/2012

Drawing N°. MRF Direct KP Vt 010

Rev: 0

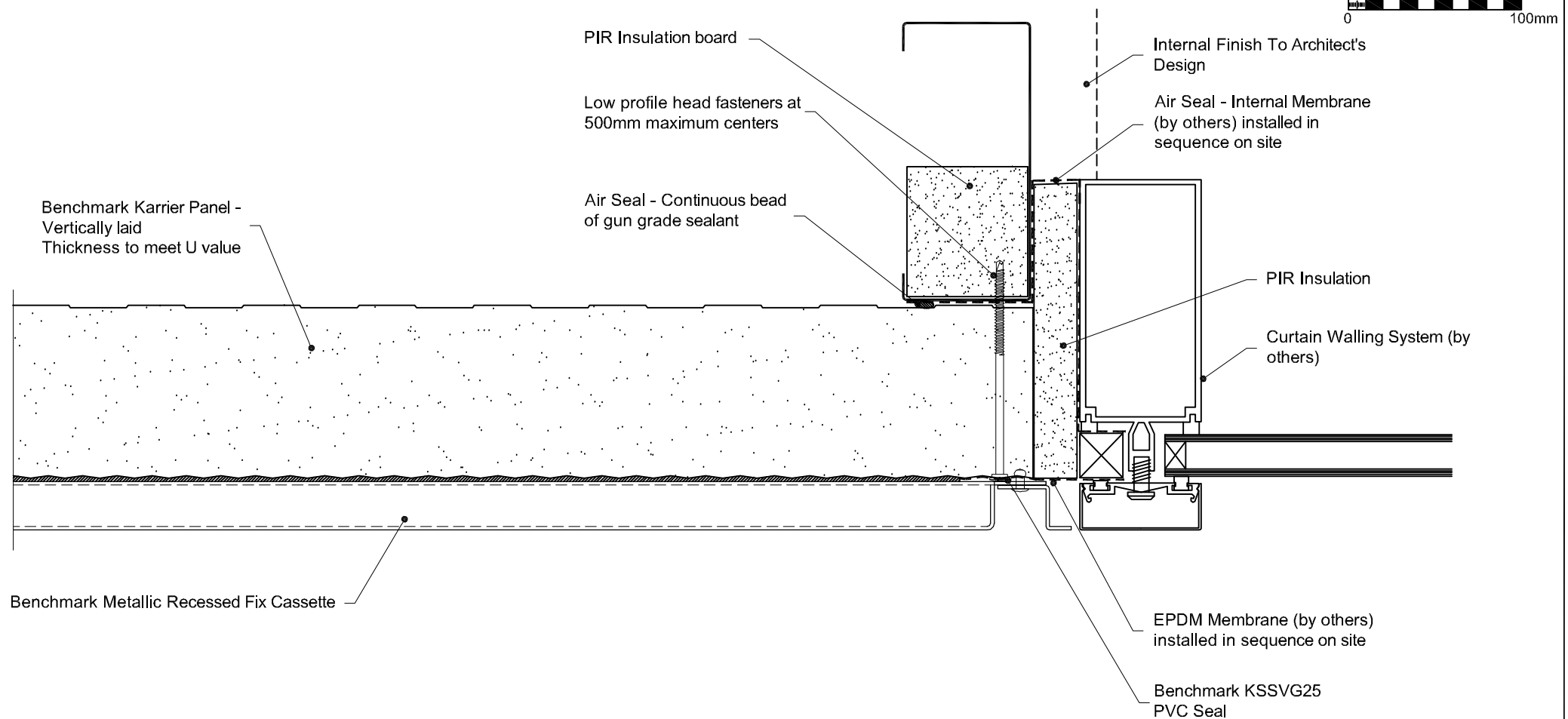
Greenfield Business Park No.2
Greenfield, Holywell
Flintshire, CH8 7GJ
Tel: 01352 716 100
Fax: 01352 710 161
Technical: 0800 970 9036

Email: technical@kingspanbenchmark.com
Website: www.kingspanbenchmark.com



By Kingspan

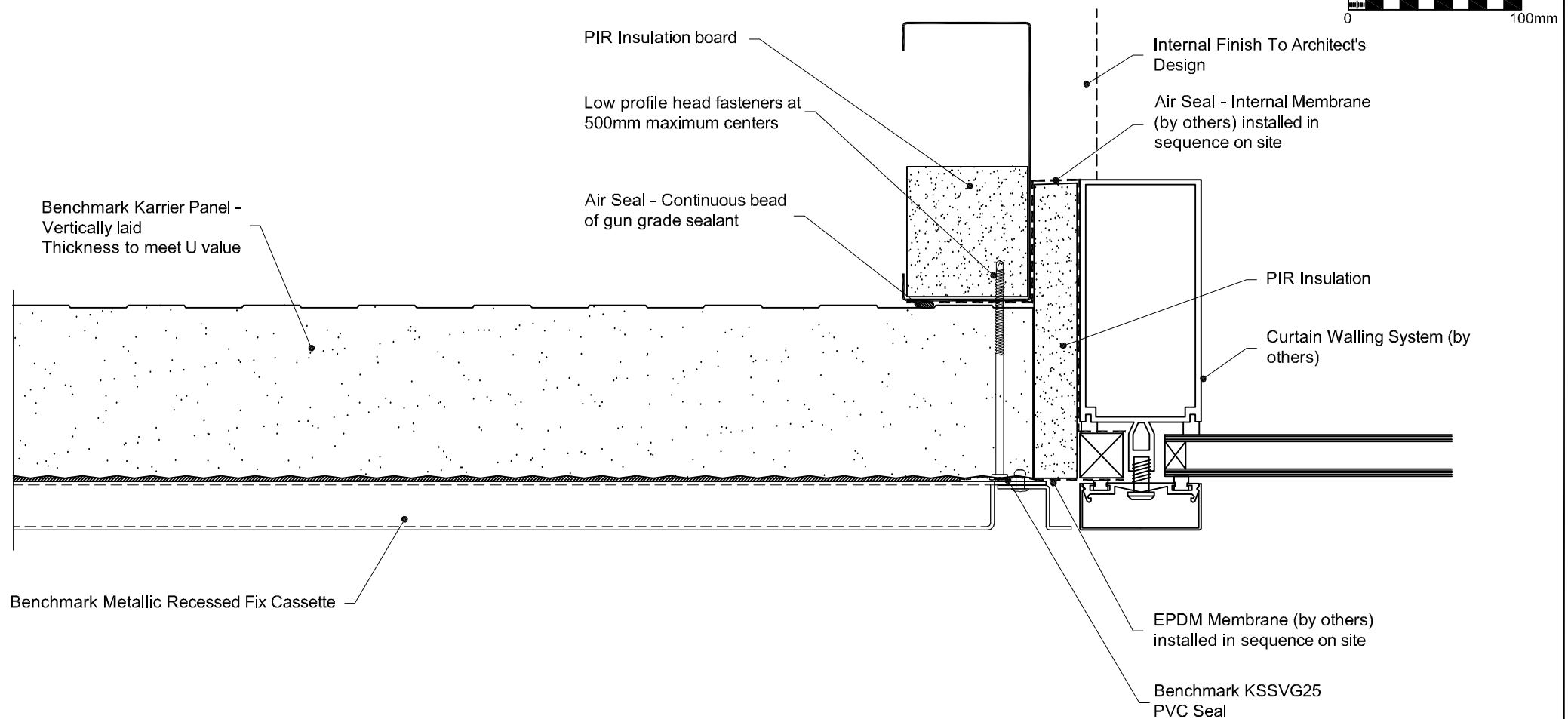
© Kingspan 2013



Project:	
System: Metallic Recessed Fix + Karrier Panel	
Drawing Title: Curtain Walling Jamb	
Drawn By: AE	Date: 15:08:2011
Drawing N°. : MRF Direct KP Vt 012	Rev: 0

Greenfield Business Park No.2
Greenfield, Holywell
Flintshire, CH8 7GJ
Tel: 01352 716 100
Fax: 01352 710 161
Technical: 0800 970 9036
Email: technical@kingspanbenchmark.com
Website: www.kingspanbenchmark.com

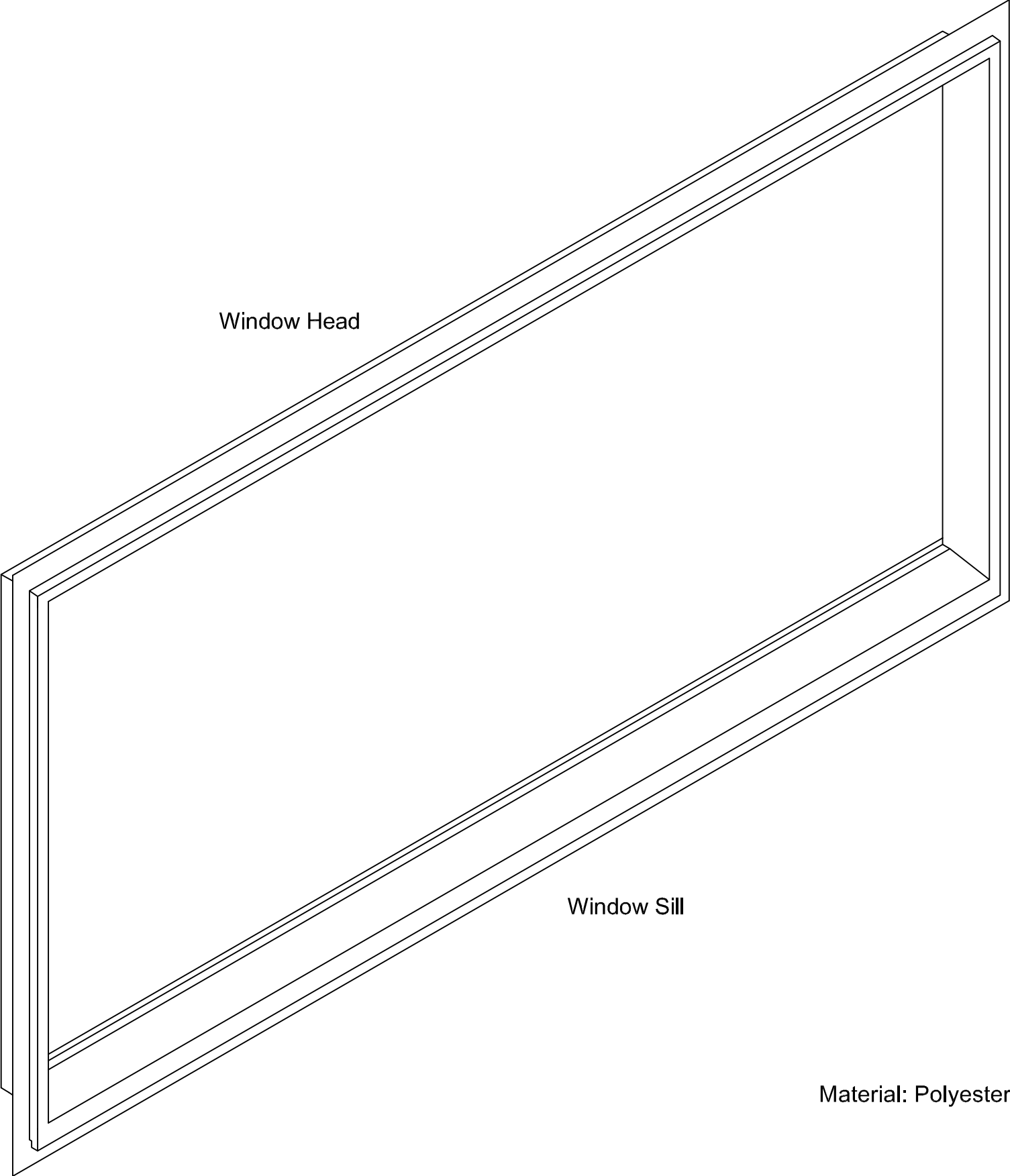
BENCHMARK
By Kingspan
© Kingspan 2013



Project:	
System: Metallic Recessed Fix + Karrier Panel	
Drawing Title: Curtain Walling Jamb	
Drawn By: AE	Date: 15:08:2011
Drawing N°.: MRF Direct KP Vt 012	Rev: 0

Greenfield Business Park No.2
Greenfield, Holywell
Flintshire, CH8 7GJ
Tel: 01352 716 100
Fax: 01352 710 161
Technical: 0800 970 9036
Email: technical@kingspanbenchmark.com
Website: www.kingspanbenchmark.com

BENCHMARK
By Kingspan
© Kingspan 2013



Window Head

Window Jamb

Window Sill

Material: Polyester Powder Coated or Mill Finished Aluminium

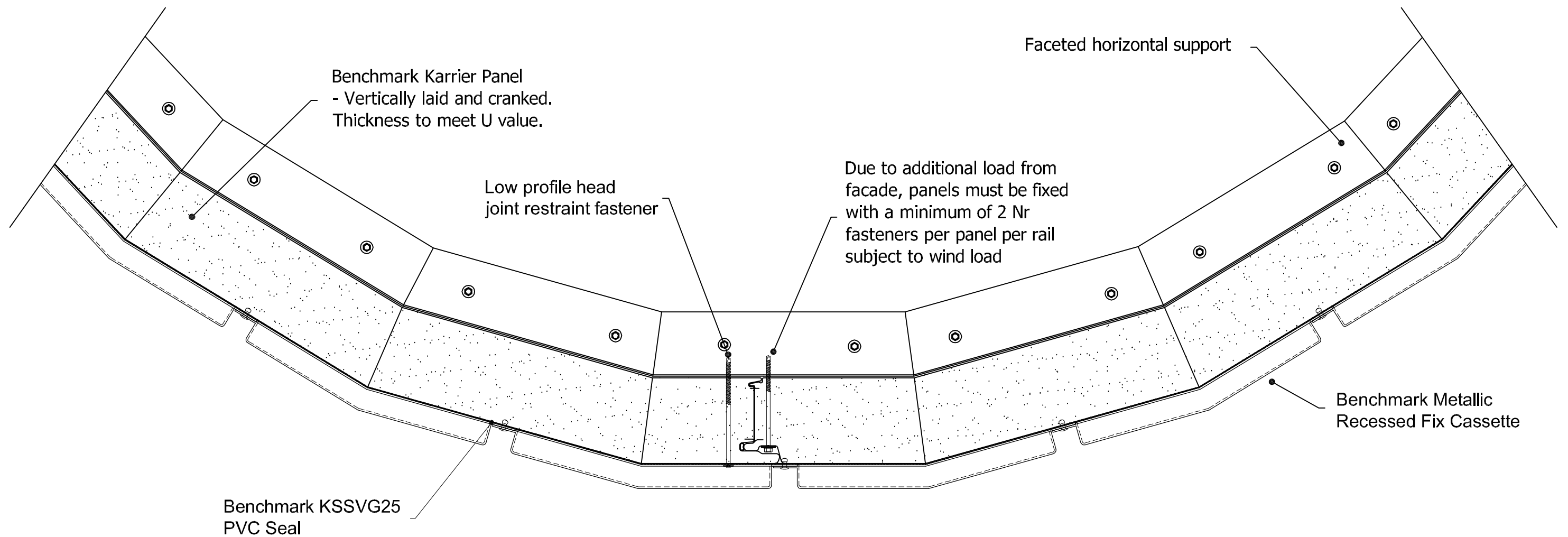
Generic only - component
dimensions tailored to suit specific
application

Project:	
System: Metallic Recessed Fix + Karrier Panel	Greenfield Business Park No.2 Greenfield, Holywell Flintshire. CH8 7GJ Tel: 01352 716 100 Fax: 01352 710 161 Technical: 0800 970 9036 Email: technical@kingspanbenchmark.com Website: www.kingspanbenchmark.com
Drawing Title: Window Pod - Isometric	
Drawn By: AE	Date: 15/03/2012
Drawing N°. MRF Direct KP Vt 013	Rev: 0



By Kingspan

© Kingspan 2013



Project:	
System: Metallic Recessed Fix + Karrier Panel	Greenfield Business Park No.2 Greenfield, Holywell Flintshire. CH8 7GJ Tel: 01352 716 100 Fax: 01352 710 161 Technical: 0800 970 9036 Email: technical@kingspanbenchmark.com Website: www.kingspanbenchmark.com
Drawing Title: Curved Wall Detail	
Drawn By: AE	Date: 15/03/2012
Drawing N°. MRF Direct KP Vt 014	Rev: 0



By Kingspan

© Kingspan 2013

AWP joint filler and gun grade sealant

Air Seal - Gun grade sealant at male joint

Air Seal - Continuous bead of gun grade sealant

Due to additional load from facade, panels must be fixed with a minimum of 2 Nr fasteners per panel per rail subject to wind load

Benchmark KSSVG25 PVC Seal

Benchmark Metallic Recessed Fix Cassette

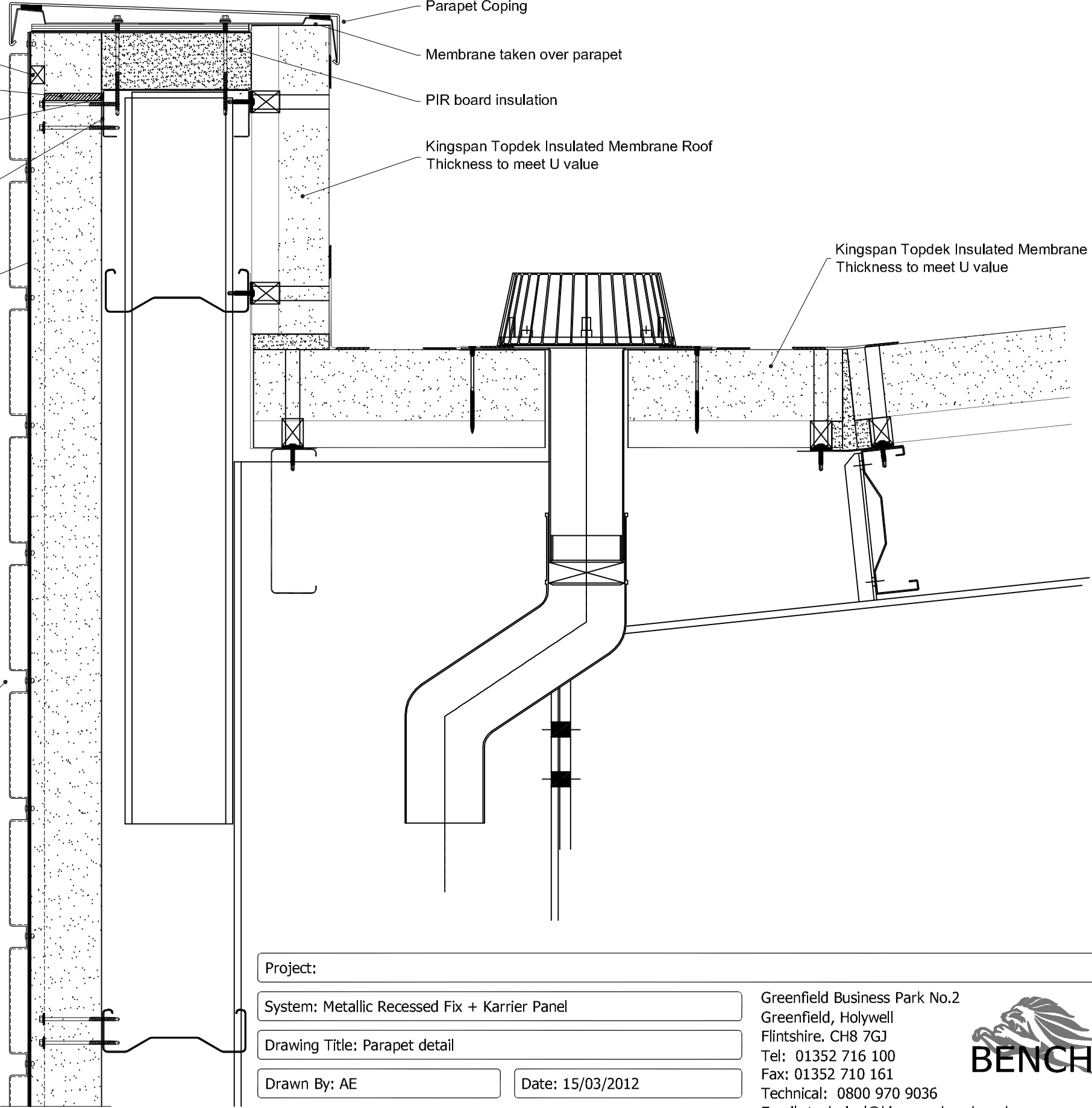
Parapet Coping

Membrane taken over parapet

PIR board insulation

Kingspan Topdek Insulated Membrane Roof
Thickness to meet U value

Kingspan Topdek Insulated Membrane Roof
Thickness to meet U value



Project:

System: Metallic Recessed Fix + Karrier Panel

Drawing Title: Parapet detail

Drawn By: AE

Date: 15/03/2012

Drawing N^o.: MRF Direct KP Vt 015

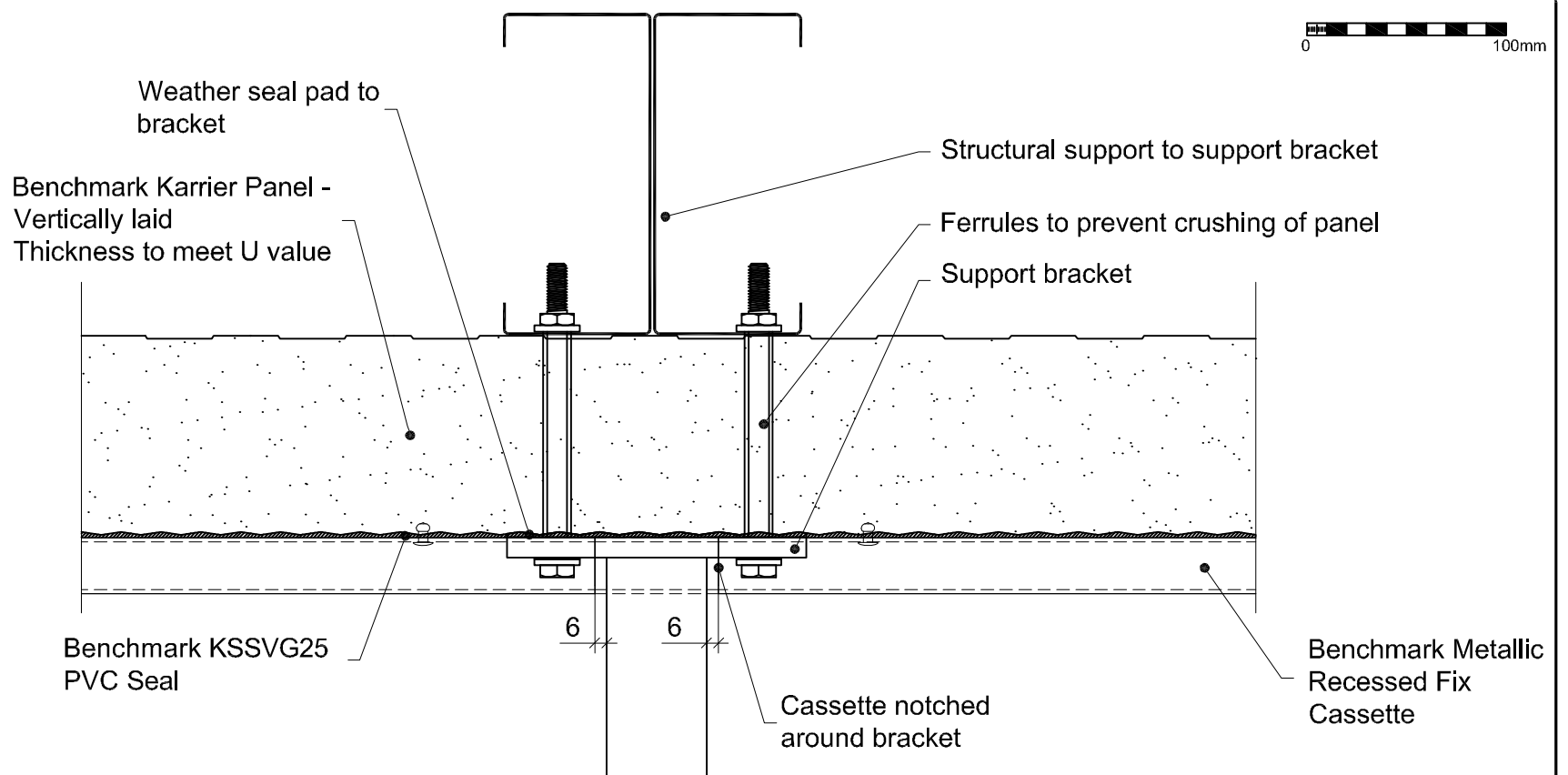
Rev: 0

Greenfield Business Park No.2
Greenfield, Holywell
Flintshire. CH8 7GJ
Tel: 01352 716 100
Fax: 01352 710 161
Technical: 0800 970 9036
Email: technical@kingspanbenchmark.com
Website: www.kingspanbenchmark.com

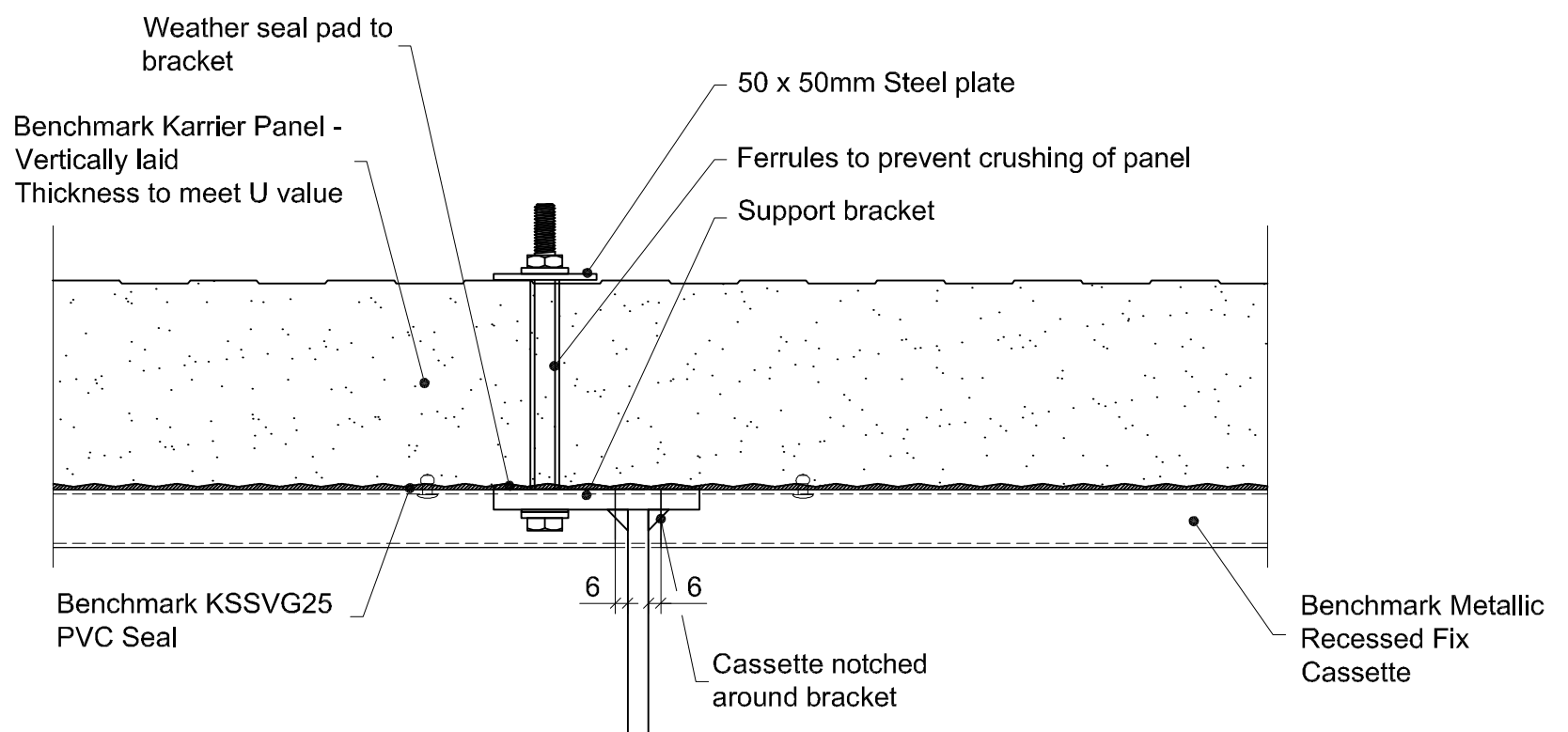


By Kingspan

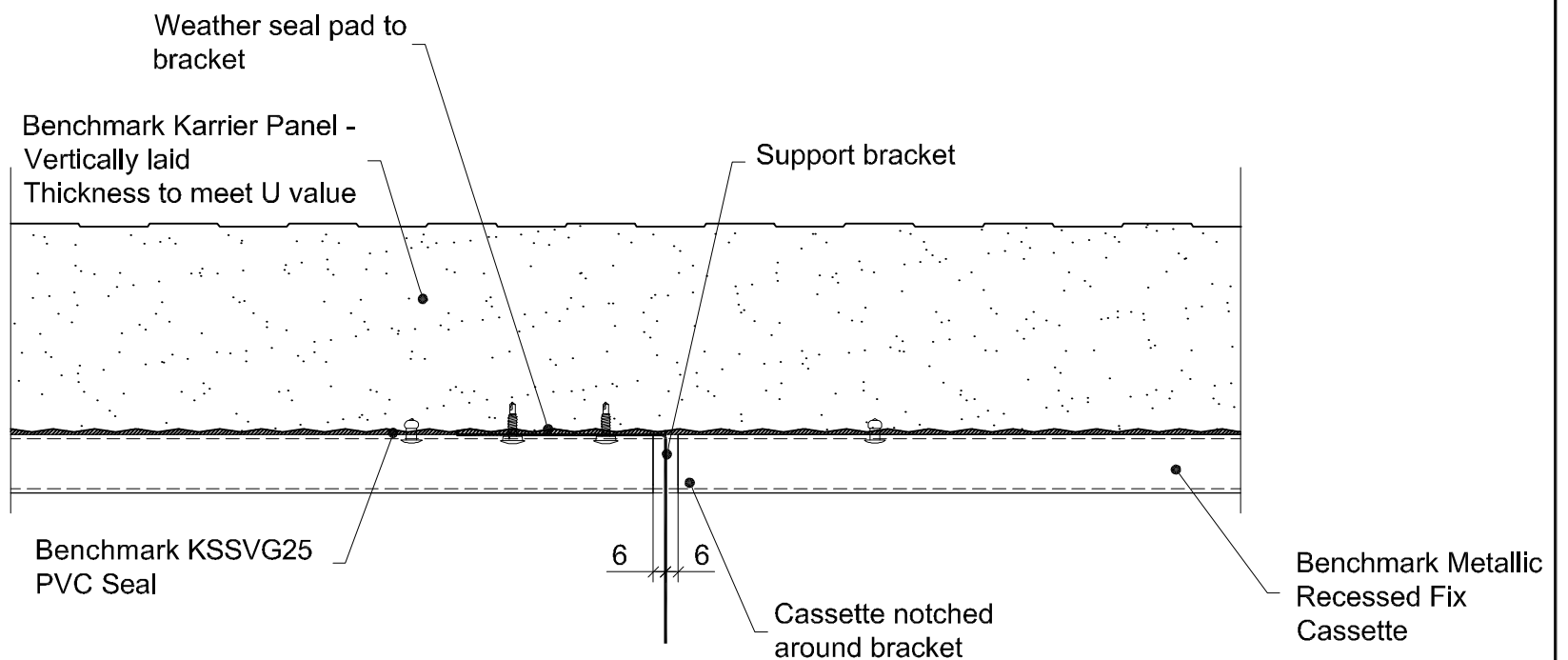
© Kingspan 2013



For Weights Over 20kg



For Weights Upto 20kg



For Weights Upto 5kg

Longitudinal Sections Through Elevation

Project:

System: Metallic Interlocking Plank + Karrier Panel

Drawing Title: Signage, Brise Soleil and Support Bracket Detail

Drawn By: AE

Date: 15/03/2012

Drawing N°. MRF Direct KP Vt 016

Rev: 0

Greenfield Business Park No.2

Greenfield, Holywell

Flintshire. CH8 7GJ

Tel: 01352 716 100

Fax: 01352 710 161

Technical: 0800 970 9036

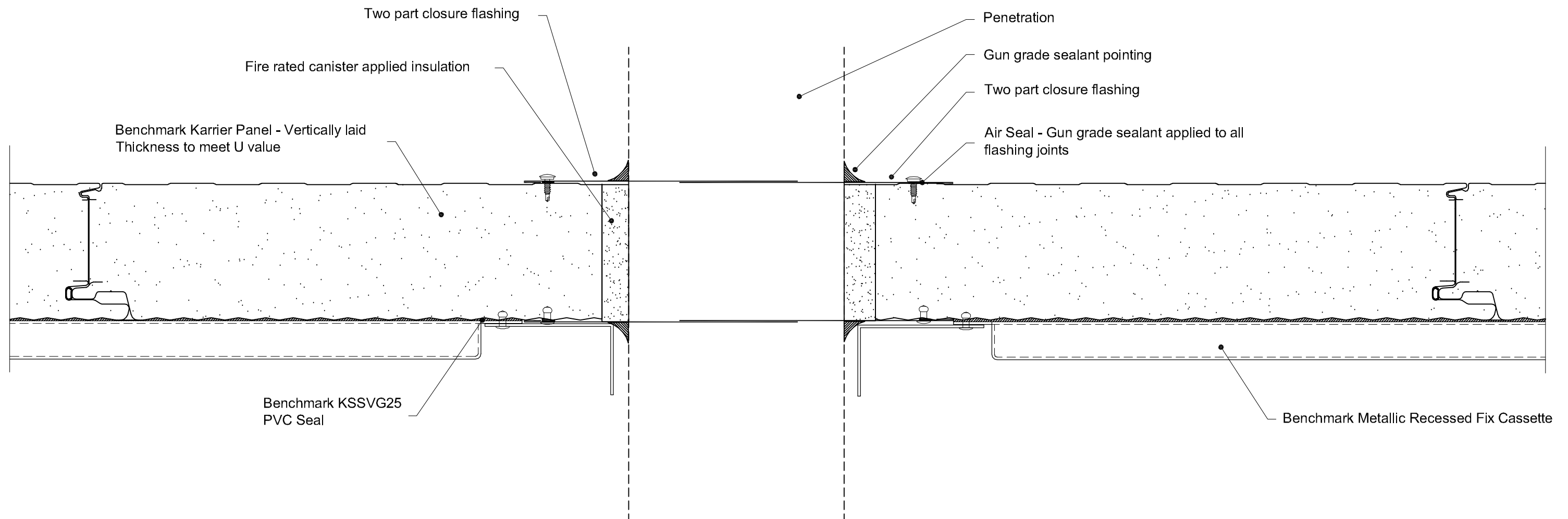
Email: technical@kingspanbenchmark.com

Website: www.kingspanbenchmark.com



By Kingspan

© Kingspan 2013



Any penetration must be a minimum of 100mm from the joint in the Karrier Panel.
Maximum penetration size of 300mm without structural trimmers to support Karrier Panel.

Project:

System: Metallic Recessed Fix + Karrier Panel

Drawing Title: Penetration Detail

Drawn By: AE

Date: 15/03/2012

Drawing N^o.: MRF Direct KP Vt 017

Rev: 0

Greenfield Business Park No.2
Greenfield, Holywell
Flintshire. CH8 7GJ

Tel: 01352 716 100

Fax: 01352 710 161

Technical: 0800 970 9036

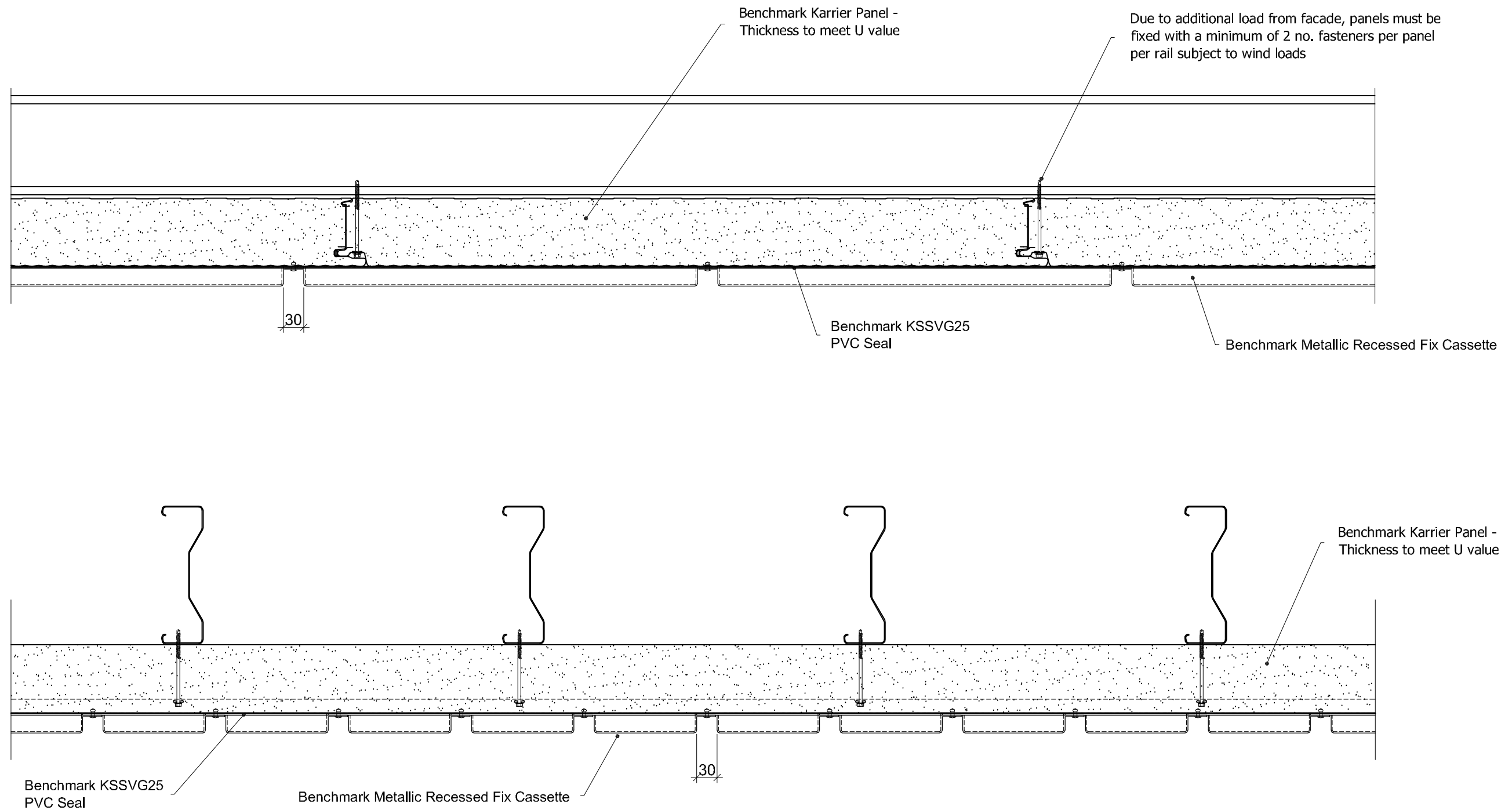
Email: technical@kingspanbenchmark.com

Website: www.kingspanbenchmark.com



By Kingspan

© Kingspan 2013



Project:

System: Metallic Recessed Fixed + Karrier Panel

Drawing Title: Soffit Details

Drawn By: AE

Date: 15/03/2012

Drawing N°. : MRF Direct KP Vt 018

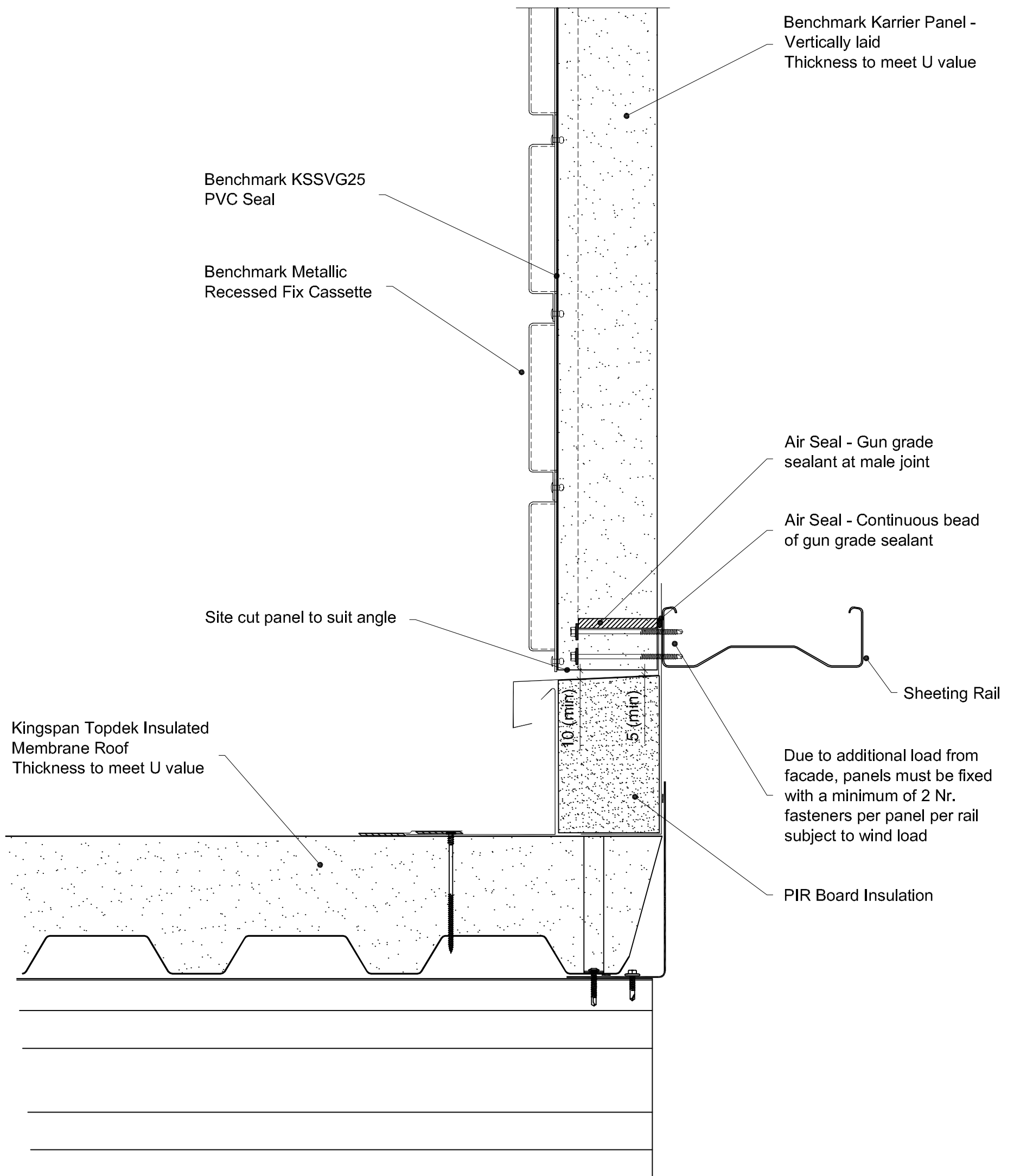
Rev: 0

Greenfield Business Park No.2
Greenfield, Holywell
Flintshire. CH8 7GJ
Tel: 01352 716 100
Fax: 01352 710 161
Technical: 0800 970 9036
Email: technical@kingspanbenchmark.com
Website: www.kingspanbenchmark.com



By Kingspan

© Kingspan 2013



Project:

System: Metallic Recessed Fix + Karrier Panel

Drawing Title: Spandrel Detail

Drawn By: AE

Date: 15/03/2012

Drawing N°.: MRF Direct KP Vt 019

Rev: 0

Greenfield Business Park No.2
Greenfield, Holywell
Flintshire. CH8 7GJ
Tel: 01352 716 100
Fax: 01352 710 161
Technical: 0800 970 9036
Email: technical@kingspanbenchmark.com
Website: www.kingspanbenchmark.com

BENCHMARK
By Kingspan
© Kingspan 2013

Benchmark KSSVG25
PVC Seal

Benchmark Metallic
Recessed Fix Cassette

0 100mm

Air seal - Gun grade
sealant at male joint

Air seal - EPDM membrane

Movement
required

Movement Cassette

EPDM Membrane

Benchmark Metallic
Recessed Fix Cassette

AWP joint filler and
gun grade sealant

Slotted connection

Air seal - Gun grade
sealant at male joint

Project:

System: Metallic Recessed Fix Cassette + Karrier Panel

Drawing Title: Movement Joint Detail

Drawn By: AE

Date: 15/03/2012

Drawing N°. MRF Direct KP Vt 100

Rev: 0

Greenfield Business Park No.2
Greenfield, Holywell
Flintshire. CH8 7GJ
Tel: 01352 716 100
Fax: 01352 710 161

Technical: 0800 970 9036

Email: technical@kingspanbenchmark.com

Website: www.kingspanbenchmark.com

BENCHMARK

By Kingspan

© Kingspan 2013