



external wall panel system



contents

3	eurobond laminates - about us	13	panel profiles
6	rockspan introduction	14	standard details - horizontally laid
7	rockspan NRG panel	16	standard details - vertically laid
8	structural performance	19	ancillaries fasteners
9	fire performance	20	factory mitred corners
10	sustainability and environmental	21	technical service & support
11	thermal and acoustic	22	Colorcoat® by Tata Steel
12	weights, dimensions and tolerances		

If you would like any additional information on any of the topics highlighted in this technical manual or project specific technical information not included then please contact us and we would be happy to discuss your requirements.

Call +44 (0) 29 20 77 66 77
Fax +44 (0) 29 20 36 91 61
Email technical@eurobond.co.uk

www.eurobond.co.uk

eurobond laminates

about us

Eurobond is the leading UK manufacturer of non-combustible cored internal and external wall and ceiling composite panels. The stone wool core offers a low environmental impact, robustness, tested fire resistance and minimum smoke in the event of a fire. The panel systems are designed to the highest standards and manufactured to consistent high quality to minimise risk through tested performance, proven installation methods and end of life disposal.

Eurobond offers a wide range of stone wool cored, architecturally flat composite wall and ceiling panels for both internal and external use.

All panel systems provided are tested and approved to Loss Prevention standard LPS 1181, LPS 1208 and Underwriters Laboratories standard ASTM E119-12.

The company continues to invest in product development, testing and manufacturing technology and operates two of the most technologically advanced panel production lines in Europe, producing consistent, high quality products to exacting tolerances. There is also a comprehensive technical advisory service to assist in the specification, detailing and installation of panel systems.



our reputation for
on quality over the



has been built
the last 30 years





The Channel Tunnel
Rail Link, Stratford

rockspan introduction

Rockspan is Eurobond's cost effective, total external wall panel solution, providing 'built in' passive fire protection for large scale buildings thanks to its stone wool core. It is the only external panel system manufactured by Eurobond that can provide up to 4 hours fire resistance, both integrity and insulation, helping to increase life safety and business continuity in the event of a fire.

The through fixed joint detail enables simple and fast construction, eliminating wet trades and promoting single component through wall construction. Rockspan can be installed both vertically and horizontally can be finished with an external Satin Line (Micro Rib) or Architecturally Flat profile and is ideal for application within the construction sector.

Rockspan Lite

Manufactured using the lowest density core of the Rockspan range. The panel system achieves up to 90 minutes fire performance without the need for joint stitching and is only available in a Satin Line (Micro Rib) profile finish.

Rockspan Extra

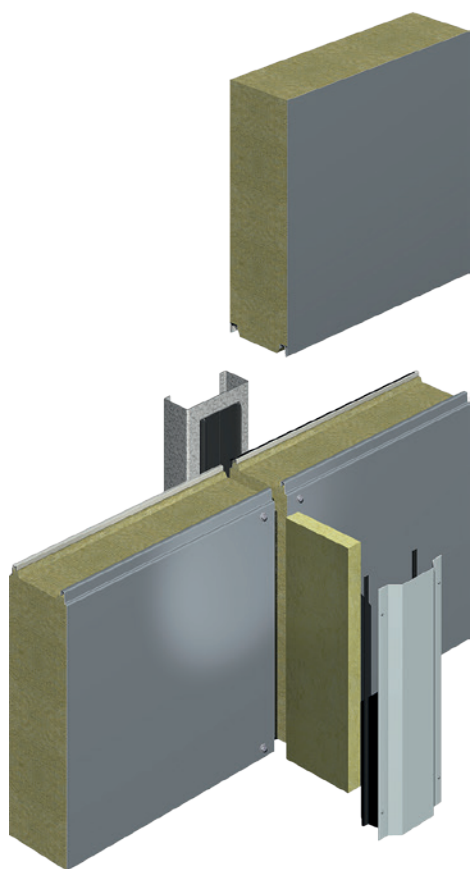
Manufactured using a higher density core than Rockspan Lite, the panel system can provide up to 2 hours fire performance with increased acoustic performance and spanning capabilities.

Rockspan Ultima

Offers the most comprehensive fire performance of the entire Eurobond external panel range. Up to 4 hours fire resistance can be achieved through the combination of joint stitching and maximum core density.



Carlsberg UK Ltd,
Northampton



rockspan NRG Panel

The NRG option is available across the Rockspan panel range. It uses a special Colorcoat® High Reflect by Tata Steel internal steel face that maximises daylight and reduces the requirement for artificial lighting. The result is lower light energy bills for the life of the building, a reduction in the CO₂ footprint and a positive contribution to material credits in a BREEAM assessment. The NRG option is available in a wide range of finishes that combine aesthetics, functionality and performance.

NRG option composite panels use Colorcoat® High Reflect - an innovative material designed with maximum reflectivity to reduce energy requirements, associated operational costs and CO₂ emissions. NRG is a passive energy saving product and the benefits are expected to last the life of the building in normal and unpolluted environments.

The new NRG panel option offers:

- ◉ ≥ 85% reflectance, reducing the amount of energy required to achieve the same level of lighting.
- ◉ Significantly reduces CO₂ emissions helping to achieve compliance with tightening regulations.
- ◉ Can improve daylight factor by 10%.
- ◉ Possible energy savings of up to 12% per annum.*

Adding the NRG option to any Eurobond composite panel will further enhance the product's market leading fire, acoustic, structural and environmental performance.

* Based on 4000m² building, daytime operation. Based on SBEM Calculation under NCM conditions for Part L compliance. [Payback for 24 hour operation is ≤ 1.5 years] Colorcoat High Reflect® used for wall and ceiling.



structural performance

Eurobond's panels offer exceptional spanning characteristics resulting from the composite action of the metal facings bonded to a high density structural stone wool core. Development and testing allows Eurobond panels to be used to span up to 12m*

Using panels that can span up to 12m means that secondary steelwork can either be eliminated or significantly reduced allowing the following benefits:

- Cost savings for steelwork.
- Reduction in build programme.
- Cleaner, uncluttered internal appearance.

The only significant constraints on the length of the panel are handling considerations, wind pressure and suction.

Wind loads are dependent on the building location and dimensions. The calculation of the wind loads, as laid down in Eurocode 1 (EN 1991 1.4), is a complex and demanding procedure for which Eurobond offer an advisory service to technically verify and model buildings and locations to calculate spanning capability.

*Dependant on project/
building environment span
in excess of 12m is possible.
Please contact Eurobond
technical department for
project specific information.

Please contact our technical department who will be happy to provide detailed span information based on your project needs.

Call +44 (0) 29 20 77 66 77
Fax +44 (0) 29 20 36 91 61
Email technical@eurobond.co.uk

www.eurobond.co.uk



fire performance



All Rockspan composite panels offer high levels of fire resistance and have been tested and approved by the Loss Prevention Certification Board (LPCB) and Underwriters Laboratories (UL). The following table details the panel specifications and fire performance achieved.

Product	Panel thickness (mm)	Fire resistance (minutes)		Maximum unsupported length (m)	LPS 1181 Grade
		Insulation	Integrity		
Rockspan Lite	75	30	60	3.0	EXT-A30
	100	30	30	5.5	EXT-A30
	100	60	60	4.5	EXT-A60
	100	60	90	4.0	EXT-A60
	125	30	30	5.5	EXT-A60
	125	60	60	4.5	EXT-A60
	125	60	90	4.0	EXT-A60
	150	60	60	5.5	EXT-A60
	150	90	120	5.0	EXT-A90
	175	60	60	5.5	EXT-A60
	175	90	120	5.0	EXT-A90
	200	90	120	5.0	EXT-A90
	240	90	120	5.0	EXT-A90
Rockspan Extra	50	-	-	-	-
	75	60	60	3.0	EXT-A60
	100	30	30	7.5	EXT-A30
	100	60	60	6.0	EXT-A60
	100	120	120	5.5	EXT-A120
	125	30	30	7.5	EXT-A30
	125	60	60	6.0	EXT-A60
	125	120	120	5.5	EXT-A120
	150	120	120	7.5	EXT-A120
	175***	180	180	-	-
	200	120	120	7.5	EXT-A120
	240	120	120	7.5	EXT-A120
Rockspan Ultima***	150**	240	240	7.5	EXT-A240
	200	240	240	7.5	EXT-A240

Non-Combustible Core

All panels have stone wool cores which are non-combustible as defined by the Building Regulations applicable to all parts of the United Kingdom and the Republic of Ireland. This includes materials classified as Class A1 in accordance with BS EN 13501-1: 2002 Fire classification of construction products and building elements - Part 1: Classification using test data from reaction to fire tests, when tested to BS EN 13501-1:2002.

Fire performance spans are subject to wind load verification.

All panels can be fitted horizontally or vertically.

* joint stitched on both sides at 3m centres

** panel joint stitched on both sides at 300mm centres

*** 0.7mm steel faces to both sides

sustainability and environmental performance

Eurobond delivers on its brand promise of low environmental impact from raw material sourcing, efficient manufacturing and market leading product performance, minimum waste and a proven recycling option at the end of a building's life.

The Eurobond philosophy is one of continual improvement, striving to manufacture and deliver to customers the most environmentally responsible and sustainable products. Key to this is establishing, implementing and maintaining an Integrated Management System which complies with the requirements of ISO9001:2008, ISO14001:2004 and BES 6001.

Whilst sustainability and 'green' credentials have become more important considerations in recent years it is not always easy to validate the claims companies make about their performance and that of their products. Eurobond's aim is to make specifying the most sustainable products simpler and more transparent. To this end it has implemented BES 6001 Responsible Sourcing of Construction Products standard that independently demonstrates that a building material has been produced in a way that has minimised its environmental impact and is sustainable. Eurobond is the first UK composite panel manufacturer to achieve this standard.

BREEAM

The BREEAM family of assessment methods and tools are designed to help construction professionals understand and mitigate the environmental impacts of the developments they design and build. When the building has been evaluated through BREEAM, the building owner, developer, and/or occupant may use the assessment rating to demonstrate the sustainability performance of their building in the marketplace.

The environmental credentials of Eurobond's products ensure that, within the materials section of BREEAM assessment, buildings are given an ideal start to achieve a high rating. Responsible sourcing is becoming more important and this is also reflected in the latest version of BREEAM, which now awards extra credits for products that have been assessed to BES 6001

End of Life Solutions

The raw materials used in the manufacture of Eurobond composite panels have a high content of recycled materials and this helps to minimise the environmental impact of construction, reducing carbon emissions by diverting materials from landfill and limiting the depletion of finite natural resources. At the end of a building's life Eurobond composite panels offer a 'Cradle to Cradle' approach to recycling where materials are recycled in a closed loop. This maximises material value whilst minimising the damage to ecosystems - products are used, recycled and re-used again without losing any material quality.

In independent tests WRAP [Waste & Resources Action Programme] found Eurobond's products are fully and independently recyclable, allowing new stone wool cored composite panels to be made diverting waste from landfill.



If you would like further information on the performance credentials of Eurobond's panels please contact our technical team.

Telephone.

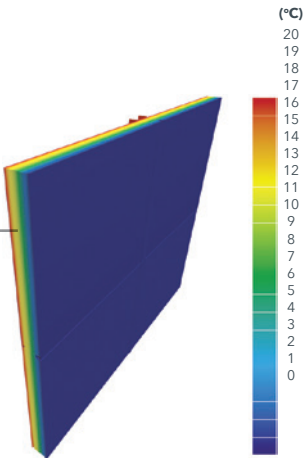
+44 (0) 29 20 77 66 77

Email.

technical@eurobond.co.uk

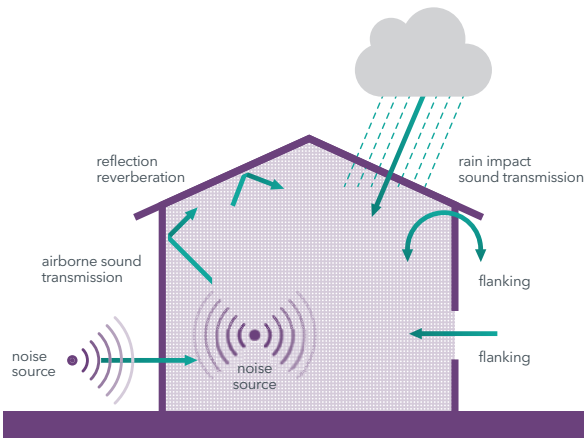
thermal and acoustic performance

Typical example of a Trisco Thermal Model for Rockspan



Thermal Performance

Eurobond panels have been specifically designed to meet the ‘as built’ thermal requirements of the Building Regulations and/or Technical Handbooks in England and Wales, Scotland and Northern Ireland.



Acoustic Performance

As buildings all need some form of acoustic control to meet specific client and/or regulatory requirements (Building Regulations Approved Document E), the following guidance is intended to provide the architect, designer, acoustic engineer and end user with qualification of Rockspan performance in England and Wales, Scotland and Northern Ireland.

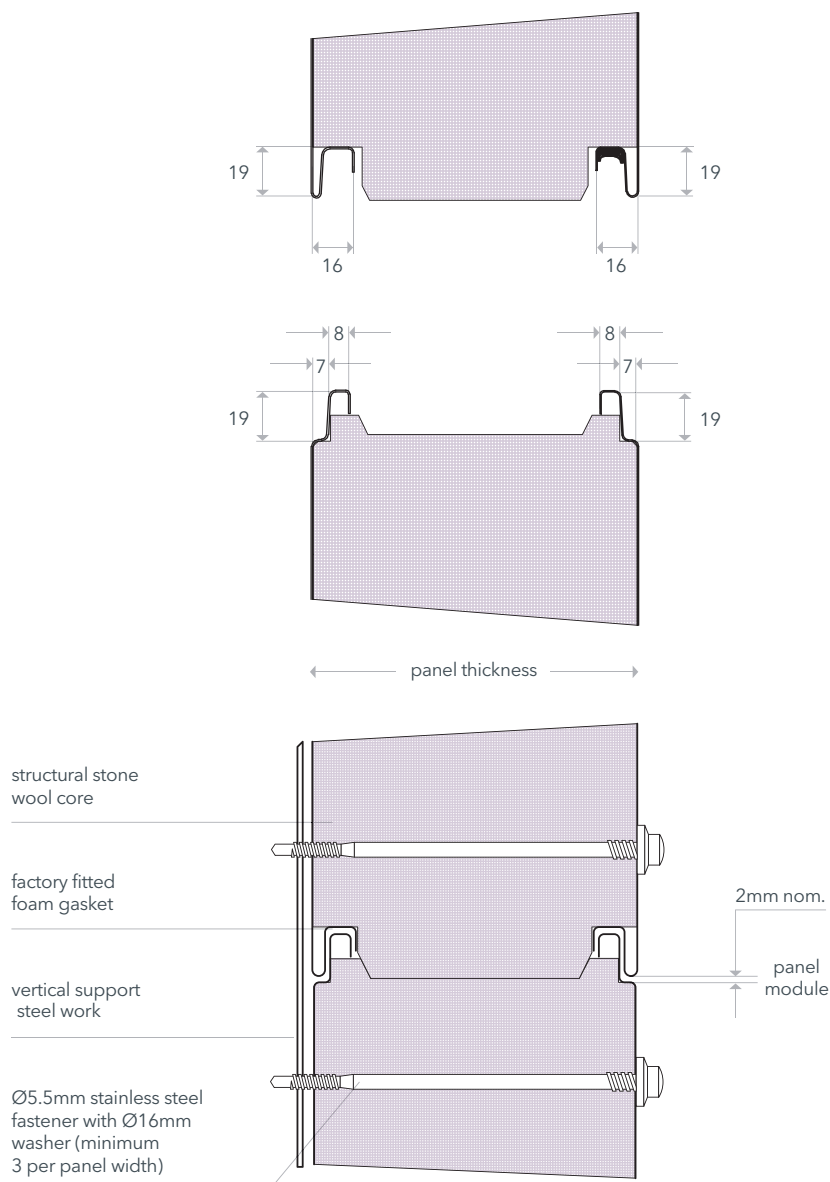
U-value and R-value calculations

Core Thickness (mm)	Rockspan Lite		Rockspan Extra		Rockspan Ultima	
	U value (W/m2K)	R value (W/m2K)	U value (W/m2K)	R value (W/m2K)	U value (W/m2K)	R value (W/m2K)
50	–	–	0.69	1.25	–	–
75	0.51	1.96	0.54	1.85	–	–
100	0.39	2.56	0.40	2.50	–	–
125	0.31	3.23	0.33	3.03	–	–
150	0.26	3.85	0.27	3.70	0.27	3.70
175	0.22	4.55	0.23	4.35	–	–
200	0.19	5.26	0.20	5.00	0.20	5.00
240	0.17	5.88	0.18	5.55	–	–

Weighted Sound Reduction index Rw (dB)

Core Thickness (mm)	Weighted Sound Reduction Rw(db)		
	Rockspan Lite	Rockspan Extra	Rockspan Ultima
50	–	30	–
75	30	31	–
100	31	33	–
125	32	33	–
150	32	34	34
175	33	35	–
200	34	36	36
240	34	36	–

weights, dimensions and tolerances



Standard Specification

1000, 1150 & 1200mm
module widths

Standard colours from the
Colorcoat HPS200 Ultra® by
Tata Steel and Colorcoat Prisma®
by Tata Steel ranges to external
face 0.7mm gauge

Satin Line (Micro rib) profile
available in Rockspan Lite,
Extra and Ultima options

Architecturally Flat profile
available in Rockspan Extra
and Ultima only

Rockspan Lite - 100kg/m³ density

Rockspan Extra and Ultima -
120kg/m³ density

Panels less than 1.8m long can
be supplied and are subject to
an extra charge

All panel lengths subject to
technical verification

Tolerances

Length	±10mm
Width	±1 mm
Thickness	±2mm
Corners (leg length)	±3mm
Flatness	1.5mm from the theoretical flat plane over a distance of 700mm
Joint gap	±2mm

Weights

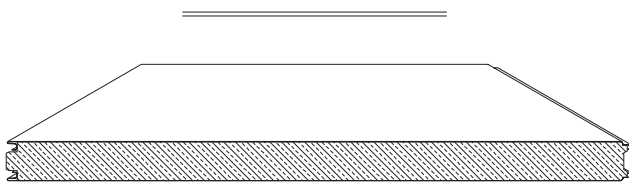
Core Thickness (mm)	Weight: Lite kg/m ²	Weight: Extra kg/m ²	Weight: Ultima kg/m ²
50	-	16.2	-
75	17.7	19.2	-
100	20.2	22.2	-
125	22.7	25.2	-
150	25.2	28.2	29.9
175	27.7	31.2	-
200	30.2	34.2	35.9
240	34.2	39	-

panel profiles

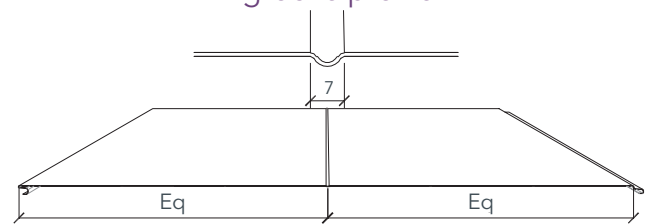
The Rockspan panels are available with the following profile finishes:

- Architecturally flat
- Satin line
- Equi-bead
- Minibead finish
- V-Groove

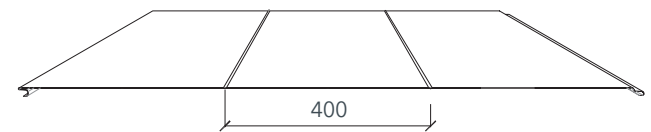
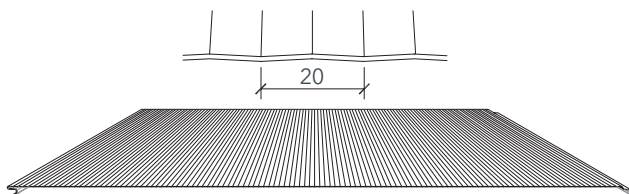
flat profile



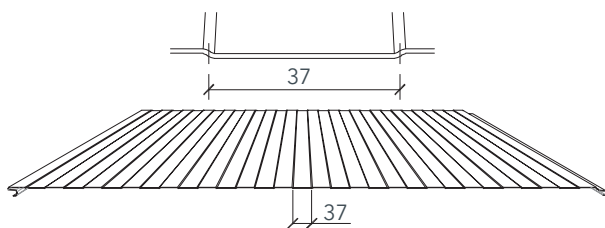
v-groove profile



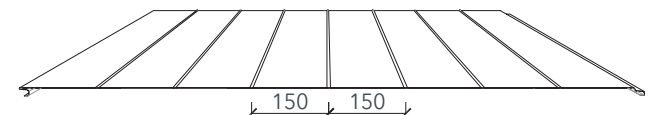
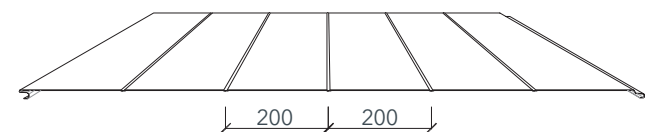
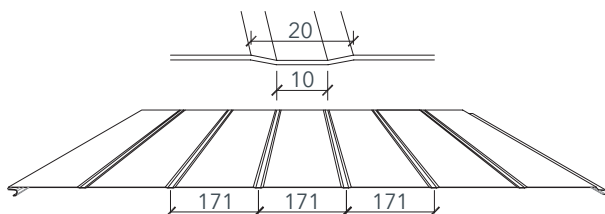
satin line profile



equi-bead profile



minibead profile



standard details

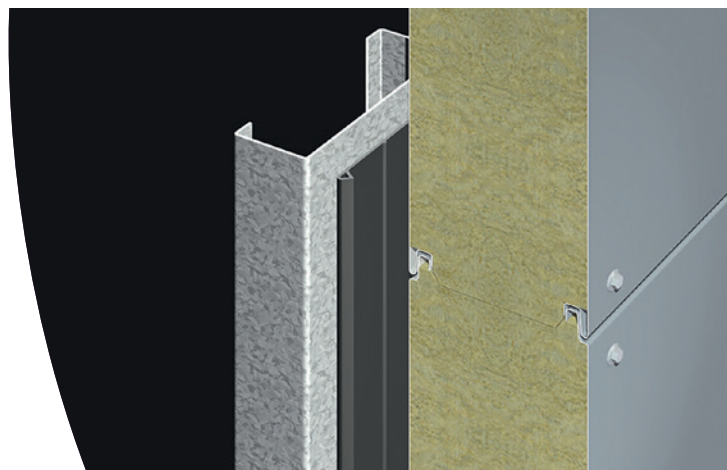
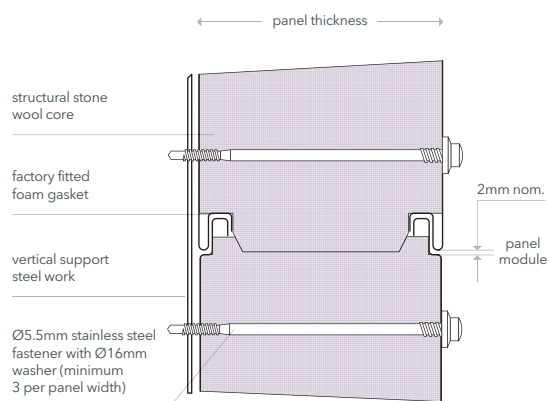
rockspan horizontally laid

Eurobond have a comprehensive library of standard details and BIM files that cover Rockspan in both horizontal and vertical applications.

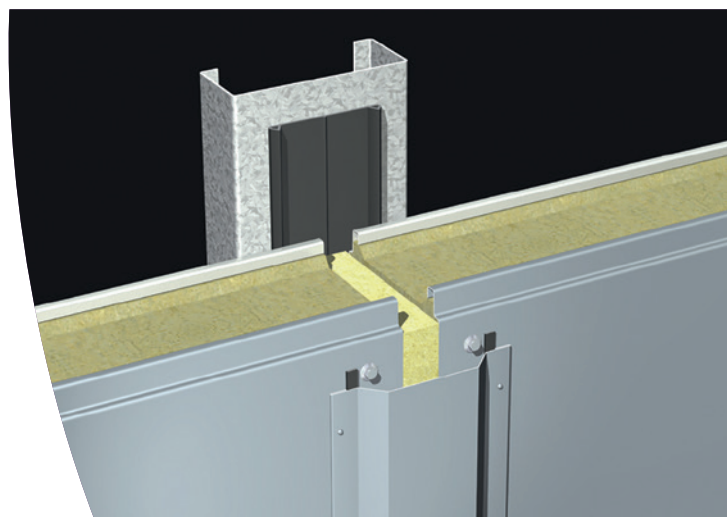
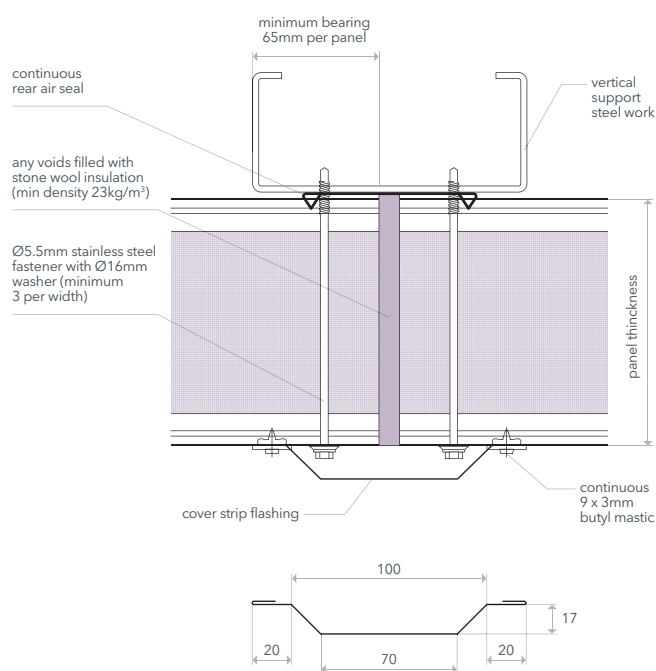
NB: Always check www.eurobond.co.uk for the latest version of any drawing. Available as PDF files and DWG format to allow them to be directly imported into project-specific drawings.



horizontal joint detail RSH-01A



vertical joint detail RSH-02A



standard details

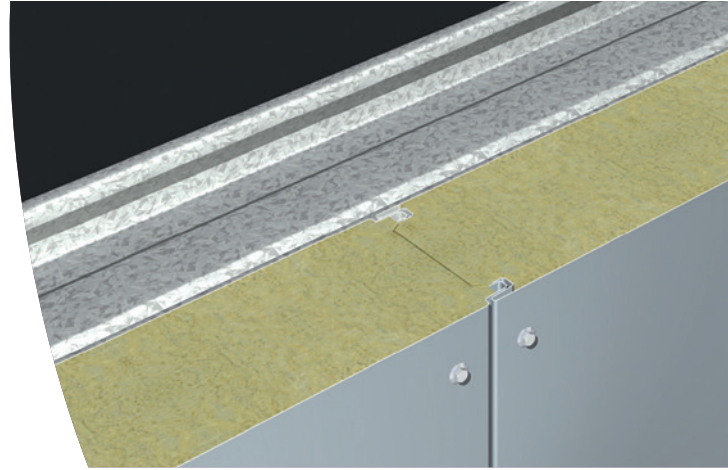
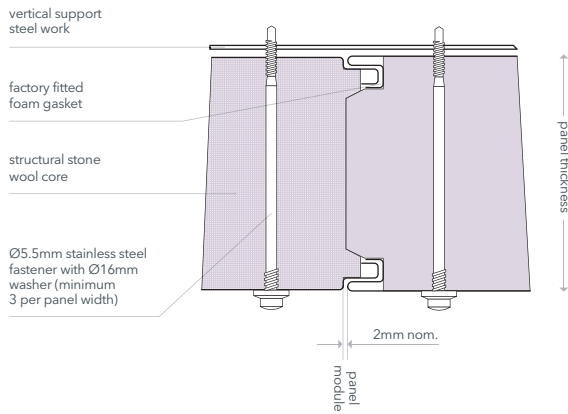
rockspan vertically laid

Eurobond have a comprehensive library of standard details and BIM files that cover Rockspan in both horizontal and vertical applications.

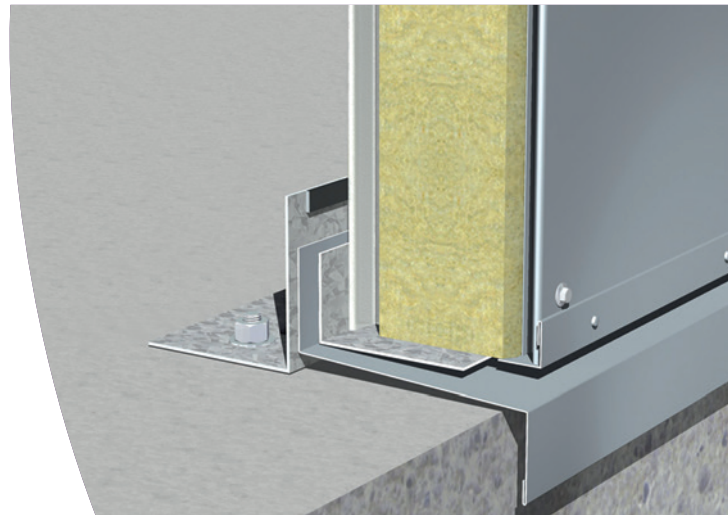
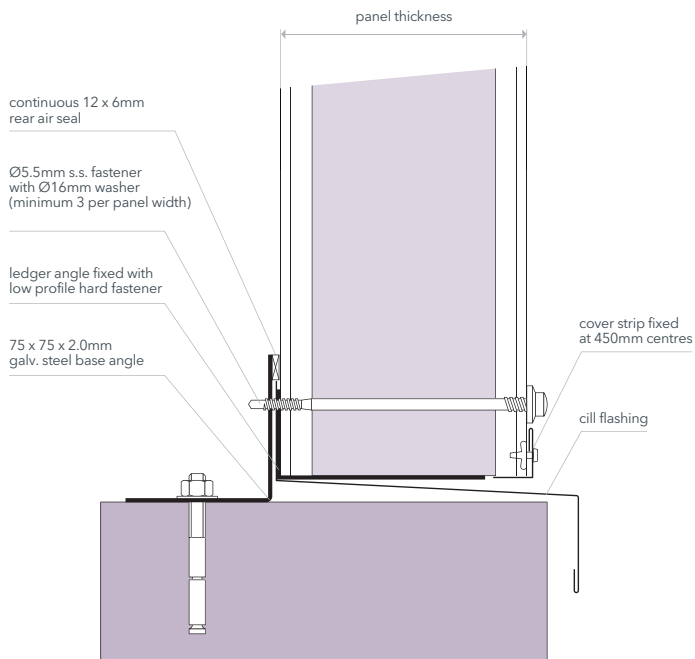
NB: Always check www.eurobond.co.uk for the latest version of any drawing. Available as PDF files and DWG format to allow them to be directly imported into project-specific drawings.



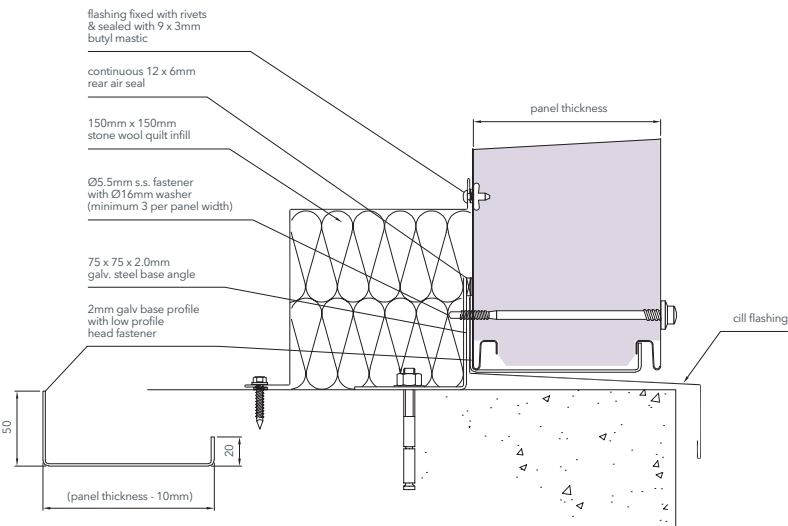
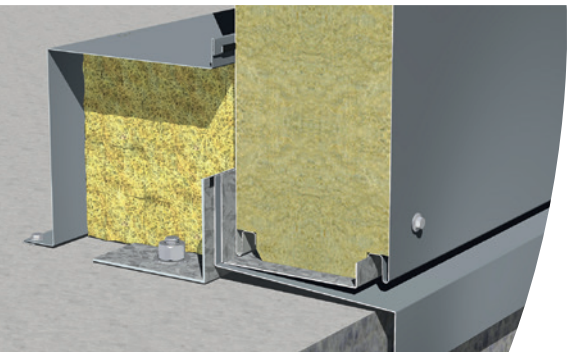
2mm vertical joint RSV-01A



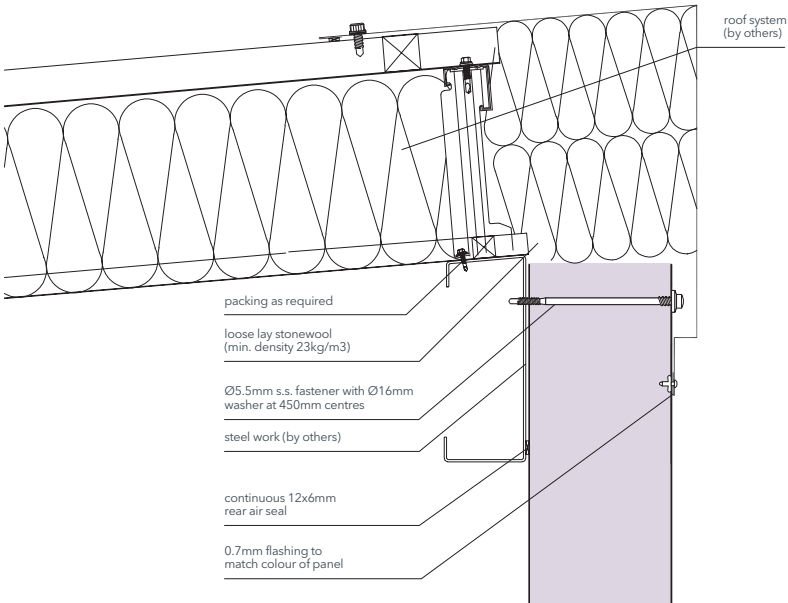
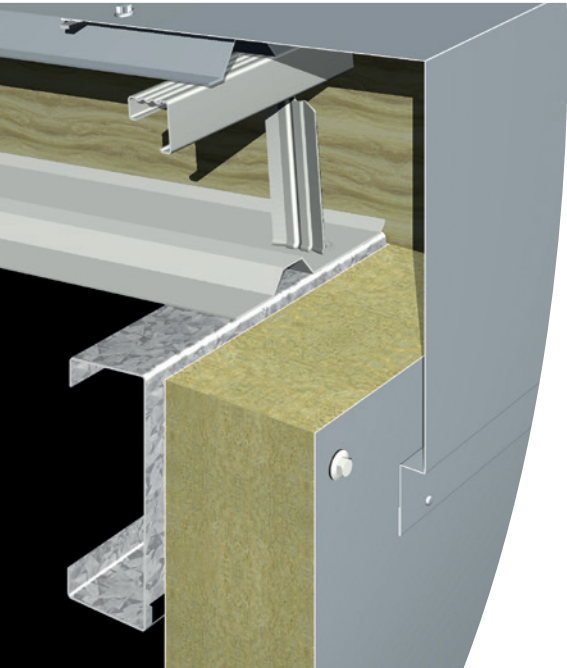
typical base detail RSV-05A



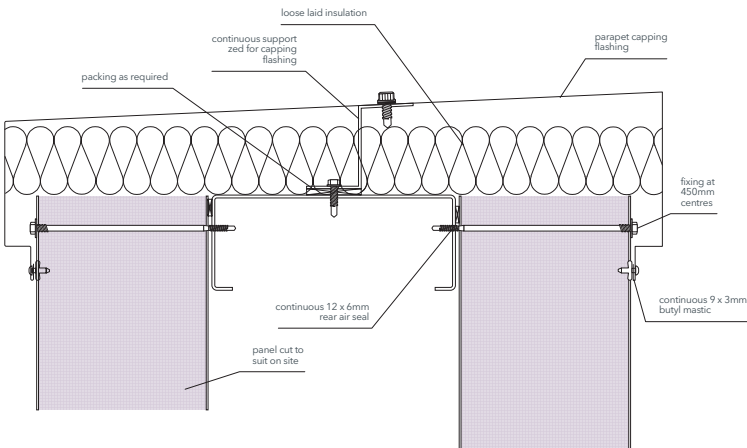
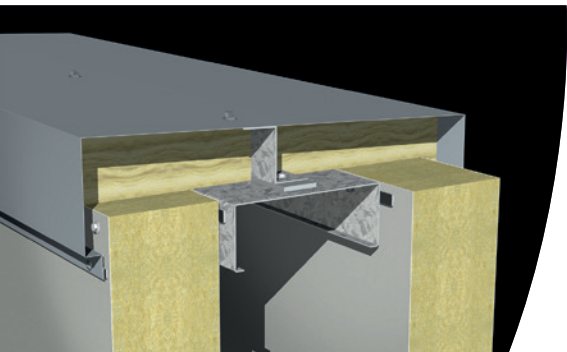
horizontal base detail



horizontal head detail



rockspan parapet detail



ancillaries fasteners

Eurobond recommend that fasteners should be stainless steel, the exact specification depends upon panel thickness and the gauge of steel work to which the panels are to be positively fixed.

Specifiers can choose from a wide variety of proprietary fasteners and should refer to the manufacturers' literature for the full range of available products.

Most of the fasteners used for metal cladding applications are self-tapping and self-drilling, although self-tapping only screws are also available.

Fasteners can generally be divided into two categories:

Primary fasteners transfer the loads from the cladding to the primary and/or secondary steelwork. Their main function is, therefore, structural.

Secondary fasteners are used to form the interface between additional features and the panel face (e.g. flashings; rails to carry Rainspan architectural façades).

While their primary purpose is to provide a weathertight seal at the joint, their structural properties may be used to provide lateral restraint and to transfer load.

Visible fasteners have the option of factory coloured plastic heads to suit the weathered sheet.

Please note Eurobond do not supply fasteners but you can contact our technical department who will be happy to provide recommended fastener types.

Telephone.

+44 (0) 29 20 77 66 77

Fax.

+44 (0) 29 20 36 91 61

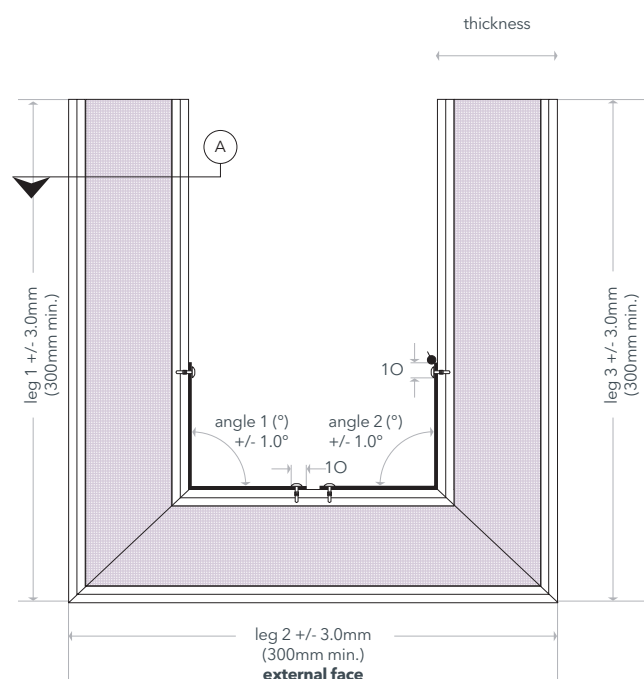
Email.

technical@eurobond.co.uk



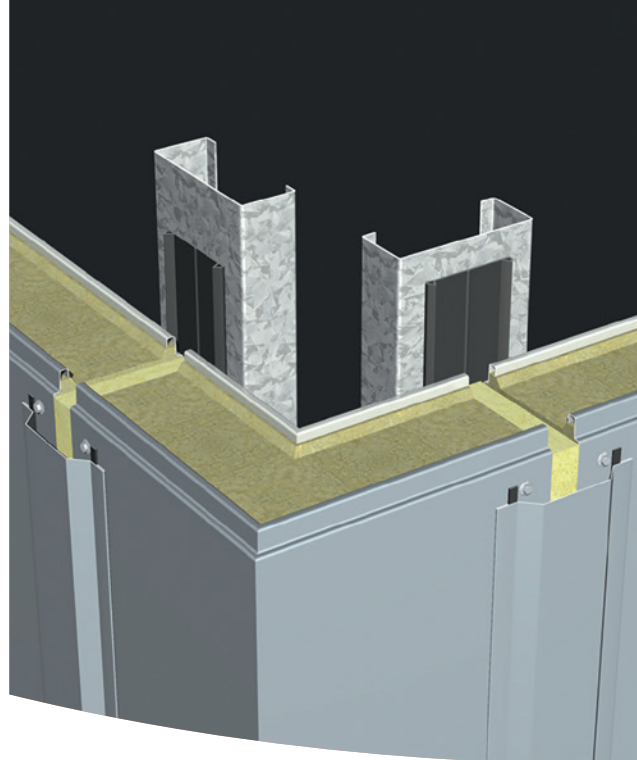
factory mitred corners

A range of bespoke factory mitred corners is available to suit all thicknesses of Rockspan. Corners can be supplied with angles to suit, any angles between 65° and 175°.



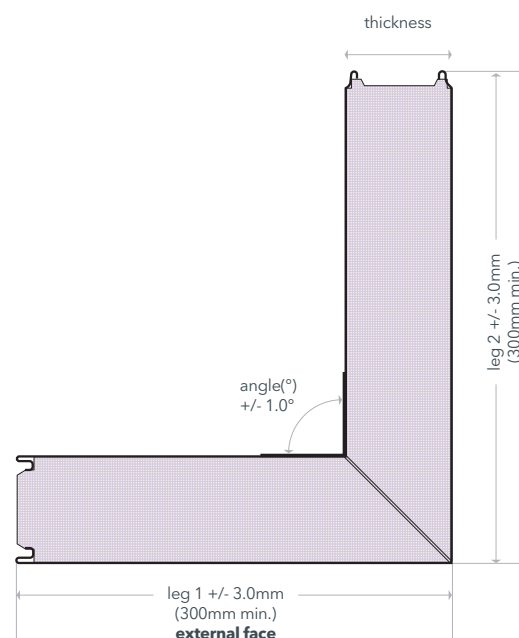
Horizontal double cranked corners

Eurobond can fabricate double cranked corners but due to their complex nature Eurobond should be contacted for confirmation of allowable dimensions.



Horizontal corner panels

Eurobond offers both internal and external corner panels for horizontally laid applications in all panel types, the maximum overall girth is 2000mm, with a minimum leg of 300mm.



Vertical corners

Eurobond manufacture vertical corners to a maximum length of 2400mm, maximum girth is 1200mm with a minimum leg of 300mm.

technical service and support

Eurobond provides a comprehensive Technical Service which can assist in correct specification, detailing and installation of panel systems.

In depth fire performance knowledge

Eurobond has extensive knowledge of the performance of composite panels in fires developed over many years from a wide range of standard and bespoke fire tests as well as working closely with leading fire engineers.

This allows us to:

- Provide guidance in selecting the most appropriate products to achieve the required fire performance.
- Provide correct detailing for each product.
- Advise on the Building Regulations and insurance company specific fire requirements.

All Eurobond products are:

- Zero ozone depleting potential and zero global warming potential.
- Full Life Cycle Assessed contributing to excellent chance of achieving a high rating in a BREEAM assessment.
- Assessed to BES 6001 Responsible Sourcing of Construction Products, ISO 9001:2008 and ISO14001:2004.
- Fully compliant with relevant Building Regulations and Technical Handbooks.
- High in recycled material content.
- Fully recyclable at end of life.

Training

Highly experienced site engineers are available to carry out site training. There is also a comprehensive range of training courses at either customer premises or at the factory in Cardiff.

This includes:

- Product application and installation training to ensure the correct specification and use of Eurobond products.
- Pre-installation project guidance.
- Project detail confirmation.
- Sign-off and project completion reports.

Eurobond research and development staff are continually seeking to improve the performance of existing products and develop new ideas. Experience gained through research and development allows Eurobond to speak with authority on the performance of its panel systems, confident in the knowledge that advice given is based on information gained through testing, prototyping and practical experience.

Members of Eurobond's Technical Department are available to attend site meetings to provide expert technical advice at the design stage, during installation and post-installation.

Sales team

Regionally based sales and product specialists are available to provide advice, presentations and one-to-one service.

Project Specific Design Advice

As well as the standard information and range of details available, project specific information can be developed to cover:

- Load/span calculations.
- Thermal and acoustic calculations.
- Bespoke CAD details.
- NBS Specifications.
- Project specific wind load modelling tool.
- BIM.

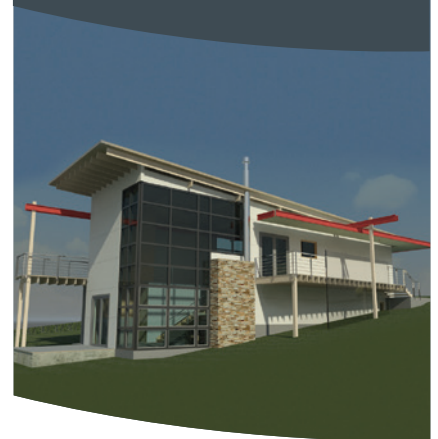
BIM

Eurobond has BIM files available for its range of stone wool core internal and external wall and ceiling composite panels. It includes material colours and COBie datasheet parameters and the designer is supported by a wide range of construction details.

The files are available in a number of file formats.

Available at eurobond.co.uk/bim or by contacting Eurobond Laminates Technical Service team on **02920 776677**

technical@eurobond.co.uk



TATA STEEL

Colorcoat® by Tata Steel products & services

The Colorcoat® brand provides the recognised mark of quality and metal envelope expertise exclusively from Tata Steel. For nearly 50 years Tata Steel has developed a range of technically leading Colorcoat® pre-finished steel products which have been comprehensively tested and manufactured to the highest quality standards. Tata Steel supply pre-finished steel to normal and special tolerances according to EN 10143:2006 to ensure that the cladding performs as designed. The Colorcoat® products are supported by a range of services such as comprehensive guarantees, colour consultancy and technical support and guidance.

To ensure the long-term performance and appearance of the building, it is important that the pre-finished steel product is specified alongside the cladding system. To secure the peace of mind that comes from a rigorously manufactured and tested product from Tata Steel, ensure Colorcoat® as well as the individual product name is specified for your cladding system e.g. Tata Steel Colorcoat HPS200 Ultra®.

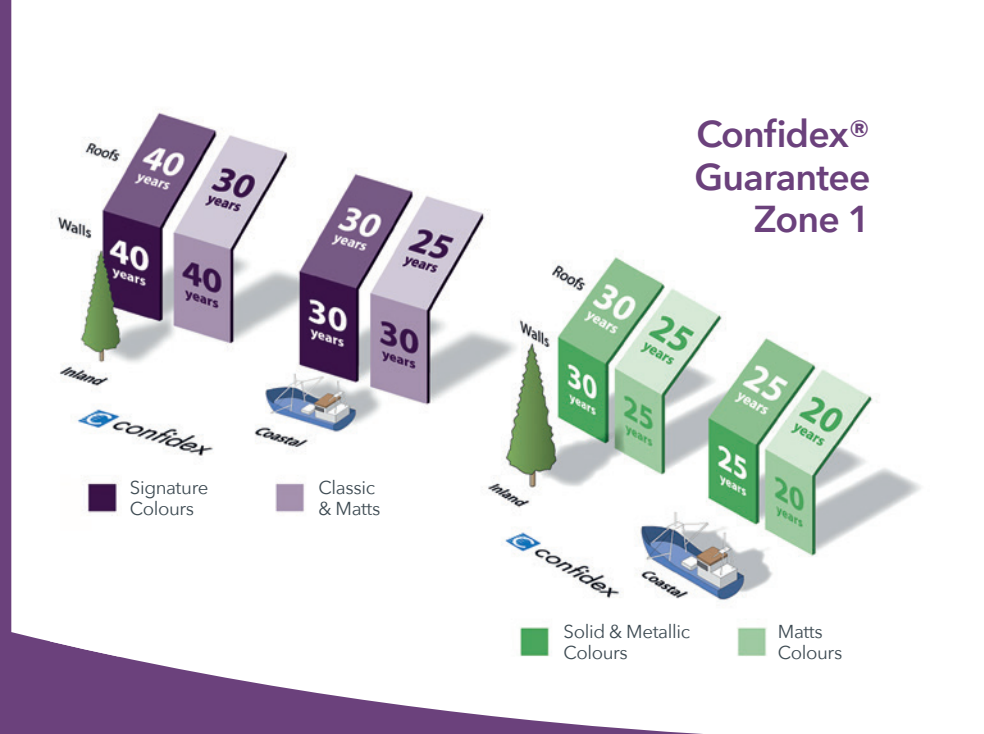
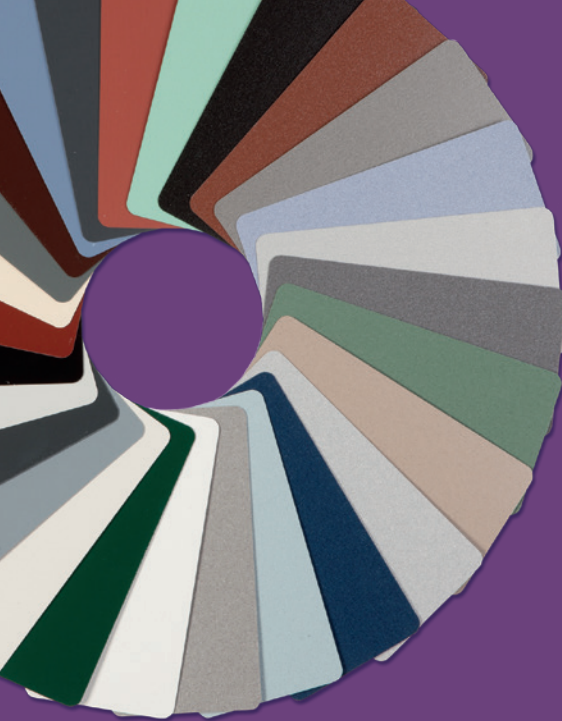
Colorcoat HPS200 Ultra® by Tata Steel

Colorcoat HPS200 Ultra® by Tata Steel provides exceptional performance and corrosion resistance for building envelope applications.

It is backed up with extreme testing and real world global data to demonstrate the best combination of excellent colour stability, gloss retention and outstanding durability.

Key benefits include:

- Optimised Galvalloy® metallic coating for exceptional corrosion resistance and cut edge protection
- Surpasses requirements of Ruv4 and RC5 as per EN 10169:2010 proving excellent colour and gloss retention and corrosion resistance.
- Scintilla® embossed as a mark of authenticity from Tata Steel.
- Made in the UK for a lower carbon footprint.
- Certified to BES 6001 Responsible Sourcing standard.
- Confidex® Guarantee for up to 40 years for the weatherside of industrial and commercial buildings with no inspection or maintenance to maintain its validity in Zone 1 and Zone 2 areas.
- Exceeds requirements of CPI5 as per EN 10169:2010 demonstrating excellent barrier properties when used internally.
- BBA certified for durability in excess of 40 years.
- Double sided option providing a robust barrier on the reverse side of the steel substrate for buildings with demanding internal and external environments.
- Fully recyclable with full product traceability and REACH compliance.



Colorcoat Prisma® by Tata Steel

Colorcoat Prisma® is technically and aesthetically superior pre-finished steel that represents the ultimate combination of durability and aesthetic appeal. As such, it provides the designer with the freedom to create architecturally striking buildings with exceptional performance, that meet the desired functionality of the building.

Key benefits include:

- Contemporary colours including solids, metallics and matt shades providing an optically smooth finish for modern designs.
- All colours surpass requirements of Ruv4 and RC5 certification as per EN 10169:2010 proving outstanding colour retention and corrosion resistance.
- Optimised Galvalloy® metallic coating for ultimate corrosion resistance and cut edge protection.
- BBA Certification in excess of 40 years for all colours, providing independent verification.
- Reverse side branding making traceability easy, so you can rest assured that your building is protected with the highest quality from Tata Steel.
- Ideal when used in integrated renewable energy generation systems. Colorcoat Prisma® is proven to provide superior solarthermal absorption capability and excellent durability when used as a collector for active solar air heating solutions.
- Double sided capability for rainscreens and rainwater goods where double sided protection is required.
- Confidex® Guarantee for up to 30 years for the weatherside of industrial and commercial buildings with no inspection or maintenance to maintain its validity in Zone 1 and Zone 2 areas.

Colorcoat® by Tata Steel services

Confidex® Guarantee

The Confidex® Guarantee from Tata Steel was first launched in 1992 and since then has remained best in class. Confidex® from Tata Steel offers the most comprehensive guarantee for pre-finished steel products in Europe and is available for industrial and commercial buildings with Colorcoat HPS200 Ultra® and Colorcoat Prisma®. The Confidex® Guarantee is clear and simple and unlike many other guarantees, offers full remedial action in the unlikely event of coating failure.

Repertoire®

The Repertoire® Colour Consultancy can advise on colours and colour strategies using a range of standard shades, as well as discussing individual bespoke colour requirements. With a minimum order quantity of 2500 m2 Tata Steel can match almost any solid colour from physical swatches to commonly used references standards. Available in Zone 1 and Zone 2 areas in Europe with Colorcoat HPS200 Ultra® and Colorcoat Prisma® and the Confidex® Guarantee. For more information visit www.colorcoat-online.com/repertoire

Colorcoat® Technical Papers

Tata Steel have published a wide range of technical papers to independently guide and advise you on key issues in building design and construction commonly considered for roof and wall cladding systems using Colorcoat® products. From acoustics and air-tightness to low carbon design, gauge tolerance and fire performance, there is a technical paper that will help you find a solution. Visit www.colorcoat-online.com/technical to download the papers.

For more information about Colorcoat® by Tata Steel products and services visit www.colorcoat-online.com

Colorcoat, Colorcoat Connection, Colorcoat HPS200 Ultra, Colorcoat Prisma, Confidex, Galvalloy and Repertoire are registered trademarks of Tata Steel UK Limited.



eurobond

Eurobond Laminates Ltd

Wentloog Corporate Park
Cardiff, CF3 2ER

Telephone. +44 (0) 29 20 77 66 77

Fax. +44 (0) 29 20 36 91 61

Email. technical@eurobond.co.uk

www.eurobond.co.uk