

HORIZONTAL KARRIER™ PANEL - VERTICAL METAL FACADE

KPH-DS-01-MTLV	C & I DISCLAIMER
KPH-PP-01-MTLV	PANEL PROFILES
KPH-PP-02-MTLV	PANEL PROFILES
KPH-PJ-01-MTLV	EXPANDED PANEL JOINT
KPH-PJ-02-MTLV	ENGAGED PANEL JOINT
KPH-PJ-03-MTLV	INTERMEDIATE SUPPORT
KPH-PJ-04-MTLV	VERTICAL JOINT
KPH-PJ-05-MTLV	VERT. JOINT BETWEEN STUDS
KPH-FS-01-MTLV	MULTI-STORY FIRE STOPPING DETAIL
KPH-FS-02-MTLV	MULTI-STORY FIRE STOPPING ASSEMBLY
KPH-FS-03-MTLV	MULTI-STORY FIRE STOPPING ASSEMBLY
KPH-BS-01-MTLV	BASE DETAIL FLUSH
KPH-BS-02-MTLV	BASE DETAIL FLUSH W/ EXTRUSION
KPH-BS-03-MTLV	BASE AT NOTCHED CONCRETE
KPH-BS-04-MTLV	BASE AT OVERHANG
KPH-BS-05-MTLV	BASE AT OVERHANG - SINGLE SKIN
KPH-OC-01-MTLV	OUTSIDE CORNER (HIGH CELL)
KPH-OC-02-MTLV	OUTSIDE CORNER (LOW CELL)
KPH-IC-01-MTLV	INSIDE CORNER (HIGH CELL)
KPH-IC-02-MTLV	INSIDE CORNER (LOW CELL)
KPH-FO-01-MTLV	FRAMED OPENING HEAD
KPH-FO-02-MTLV	FRAMED OPENING JAMB (HIGH CELL)
KPH-FO-03-MTLV	FRAMED OPENING JAMB (LOW CELL)
KPH-FO-04-MTLV	FRAMED OPENING SILL
KPH-PR-01-MTLV	PARAPET DETAIL
KPH-LE-01-MTLV	LOW EAVE DETAIL
KPH-RD-01-MTLV	RAKE DETAIL
KPH-TP-01-MTLV	PANEL TERMINATION (HIGH CELL)
KPH-TP-02-MTLV	PANEL TERMINATION (LOW CELL)
KPH-TL-01-MTLV	TRIM END LAP
KPH-TL-02-MTLV	TRIM END LAP WITH HEM

INDEX SHEET

DETAIL #: KPH-XX-XX-MTLV

DATE: 2019



www.kingspanpanels.us
www.kingspanpanels.ca

HORIZONTAL KARRIER™ PANEL - VERTICAL METAL FACADE

DISCLAIMERS:

THESE DETAILS ARE PROVIDED AS A GUIDELINE FOR PROPER PANEL AND ASSOCIATED COMPONENT INSTALLATION, AND ARE BASED ON INDUSTRY ACCEPTED PRACTICES.

LOCATION OF VAPOR BARRIERS AND ASSOCIATED SEALANTS IN THESE DETAILS ARE BASED ON TYPICAL DESIGN PRACTICES FOR MOST U.S. AND CANADIAN CLIMATIC ZONES. (THE PRIMARY VAPOR BARRIER IS PLACED ON THE "WARM" SIDE IN WINTER).

PROJECTS LOCATED IN AREAS SUBJECT TO EXTREME COLD AND/OR HIGH SNOW LOADS MAY REQUIRE MODIFICATIONS TO THESE DETAILS - CONTACT KINGSPAN TECHNICAL SERVICES FOR SPECIFIC PROJECT RECOMMENDATIONS.

ALL STRUCTURAL SUPPORTS ARE NOT BY KINGSPAN AND ARE SHOWN FOR CLARIFICATION AND ILLUSTRATION PURPOSES ONLY.

WALL SYSTEM DEFLECTIONS ARE TO BE DETERMINED BY THE ENGINEER OF RECORD.

ALL DETAILS ARE BASED ON TYPICAL STUD WALL CONSTRUCTION WITH SINGLE FASTENER. FOR ATTACHMENT TO OTHER WALL SUPPORT SYSTEMS, PLEASE CONTACT KINGSPAN TECHNICAL SERVICES FOR FASTENING RECOMMENDATIONS.

CONTACT KINGSPAN TECHNICAL SERVICES FOR MAXIMUM ALLOWABLE PANEL SPANS AND FASTENING PATTERNS.

DISCLAIMER

DETAIL #: KPH-DS-01-MTLV

DATE: 2019



www.kingspanpanels.us
www.kingspanpanels.ca

HORIZONTAL KARRIER™ PANEL - VERTICAL METAL FACADE

CORE DEPTHS:
2", 2.5", 3", 4", 5", 6"

STEEL GAUGES:
EXTERIOR: REFER TO PROFILE
INTERIOR: 26, 24, 22

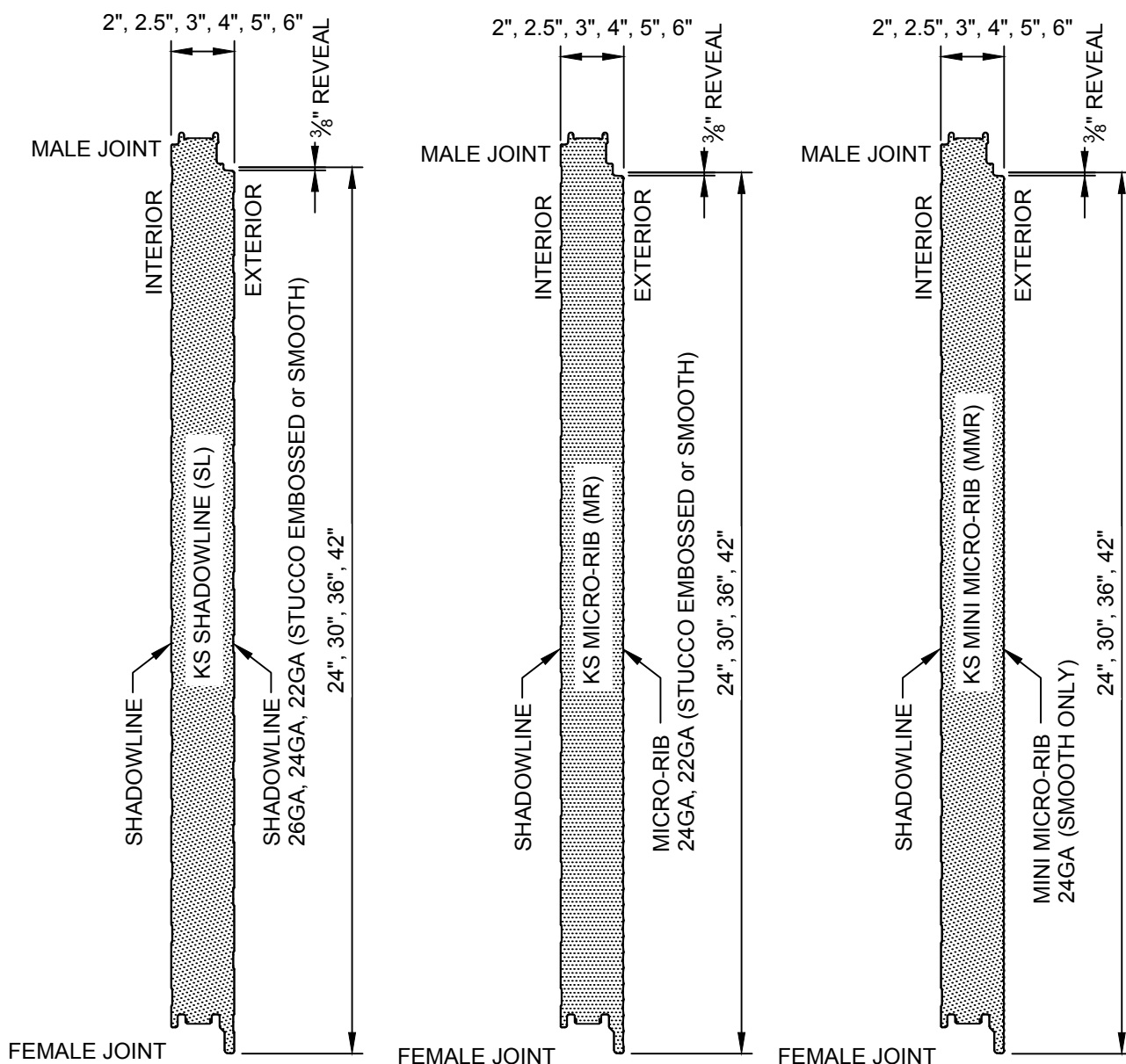
REVEAL OPTIONS:
 $\frac{1}{8}"$ or $\frac{3}{8}"$

MODULE WIDTH:
24", 30", 36", 42"

PANEL ORIENTATION:
VERTICAL or HORIZONTAL

REVEAL: $\frac{3}{8}"$
($\frac{3}{8}"$ REVEAL IS REQUIRED
FOR ALL KARRIER RAIL
APPLICATIONS)

EMBOSSING:
EXTERIOR: REFER TO PROFILE
INTERIOR: STUCCO / SMOOTH
LENGTHS:
MINIMUM: 8'-0"
MAXIMUM: 53'-0"



PANEL PROFILES

DETAIL #: KPH-PP-01-MTLV

DATE: 2019



www.kingspanpanels.us
www.kingspanpanels.ca

HORIZONTAL KARRIER™ PANEL - VERTICAL METAL FACADE

CORE DEPTHS:
2", 2.5", 3", 4", 5", 6"

MODULE WIDTH:
24", 30", 36", 42"

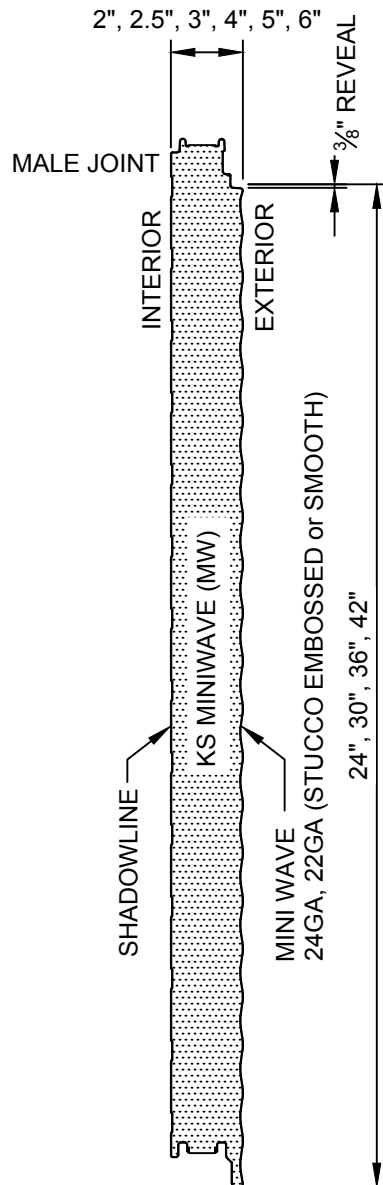
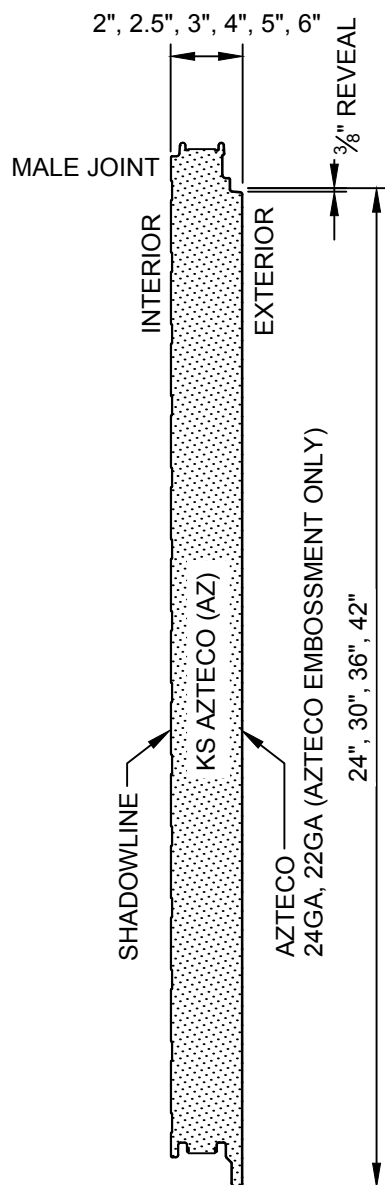
EMBOSSING:
EXTERIOR: REFER TO PROFILE
INTERIOR: STUCCO / SMOOTH

STEEL GAUGES:
EXTERIOR: REFER TO PROFILE
INTERIOR: 26, 24, 22

PANEL ORIENTATION:
VERTICAL or HORIZONTAL

LENGTHS:
MINIMUM: 8'-0"
MAXIMUM: 53'-0"

REVEAL OPTIONS:
 $\frac{1}{8}"$ or $\frac{3}{8}"$



PANEL PROFILES

DETAIL #: KPH-PP-02-MTLV

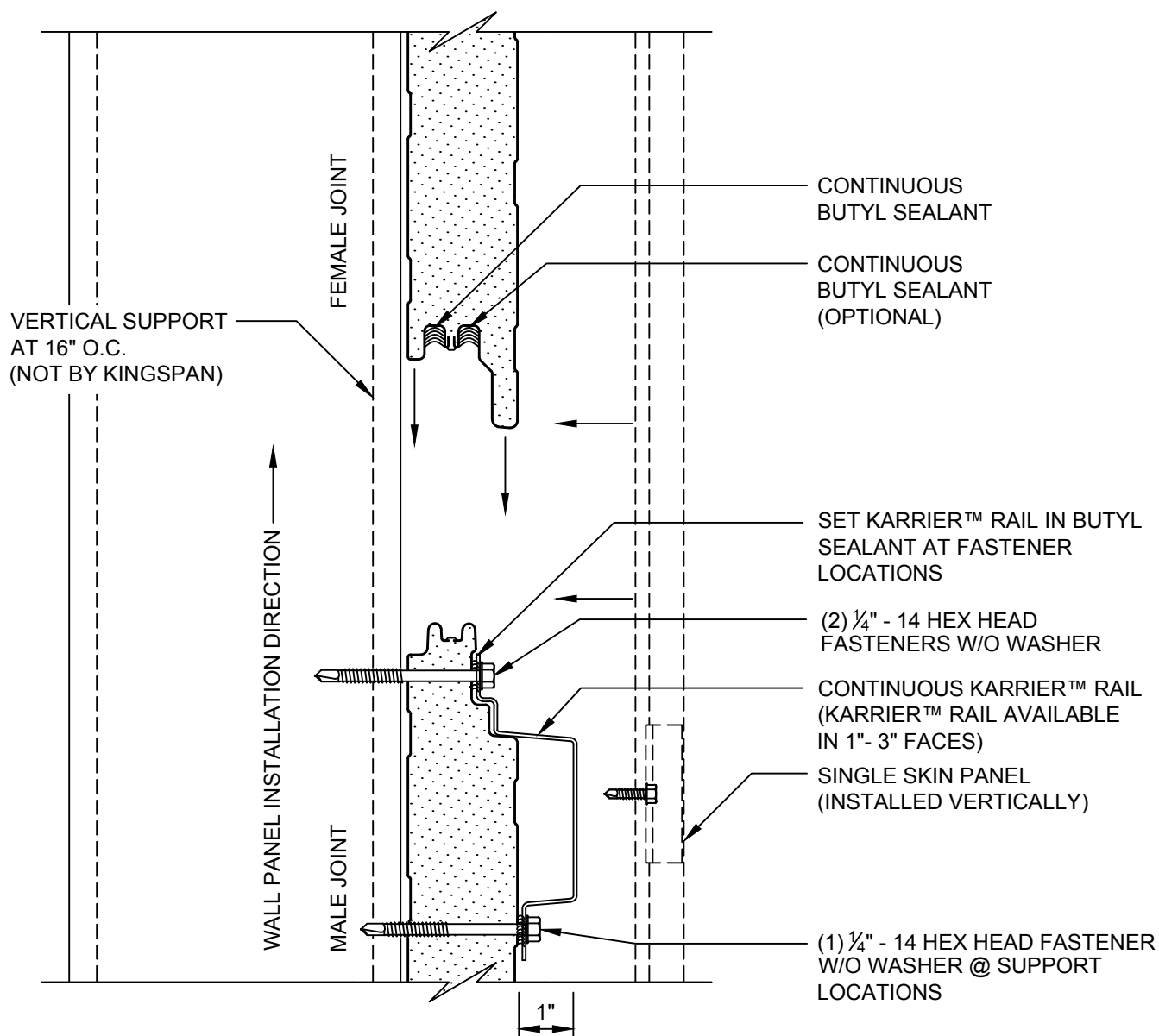
DATE: 2019



www.kingspanpanels.us
www.kingspanpanels.ca

HORIZONTAL KARRIER™ PANEL - VERTICAL METAL FACADE

NOTE:
FOR PROJECTS REQUIRING NFPA 285:
INTERIOR SIDE OF FRAMING MUST
HAVE $\frac{5}{8}$ " THICK FIRE BLOCK TYPE X
GYPSUM BOARD (NOT BY KINGSPAN)



EXPANDED PANEL
JOINT

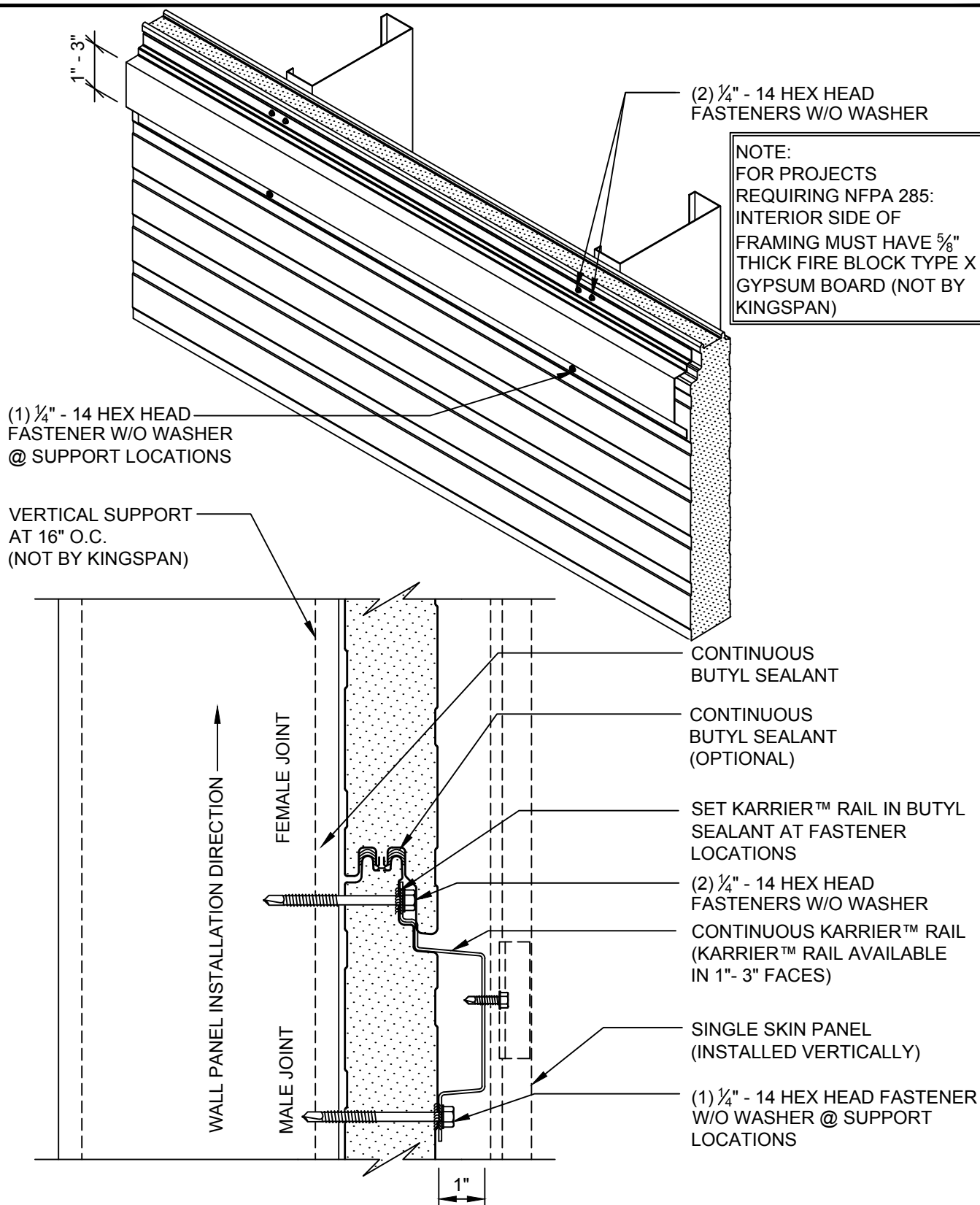
DETAIL #: KPH-PJ-01-MTLV

DATE: 2019



www.kingspanpanels.us
www.kingspanpanels.ca

HORIZONTAL KARRIER™ PANEL - VERTICAL METAL FACADE



ENGAGED PANEL
JOINT

DETAIL #: KPH-PJ-02-MTLV

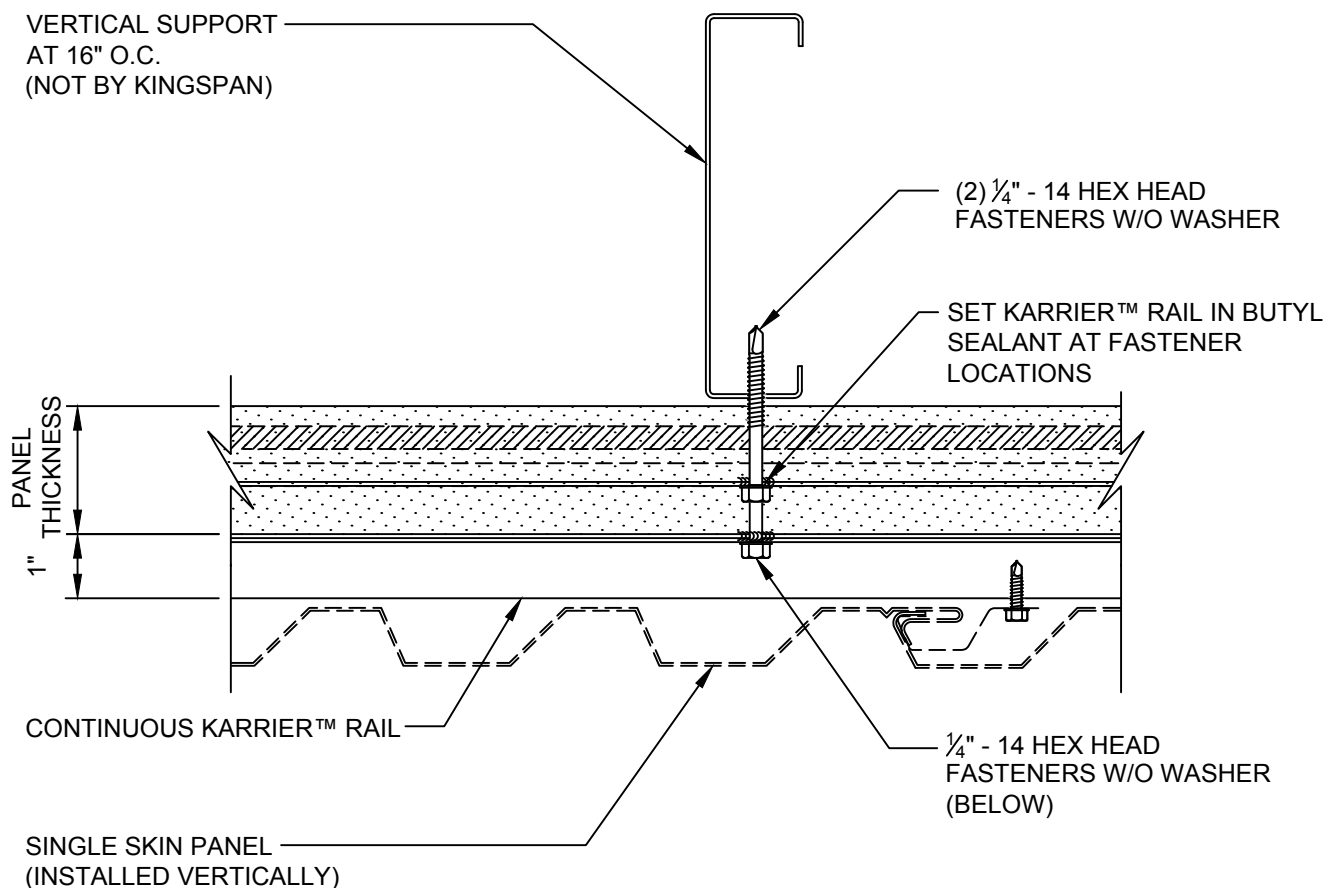
DATE: 2019



www.kingspanpanels.us
www.kingspanpanels.ca

HORIZONTAL KARRIER™ PANEL - VERTICAL METAL FACADE

NOTE:
FOR PROJECTS REQUIRING NFPA 285:
INTERIOR SIDE OF FRAMING MUST
HAVE $\frac{5}{8}$ " THICK FIRE BLOCK TYPE X
GYPSUM BOARD (NOT BY KINGSPAN)



NOTE:
CONTACT KINGSPAN TECHNICAL SERVICES FOR SPECIFIC PROJECT RECOMMENDATIONS

INTERMEDIATE
SUPPORT

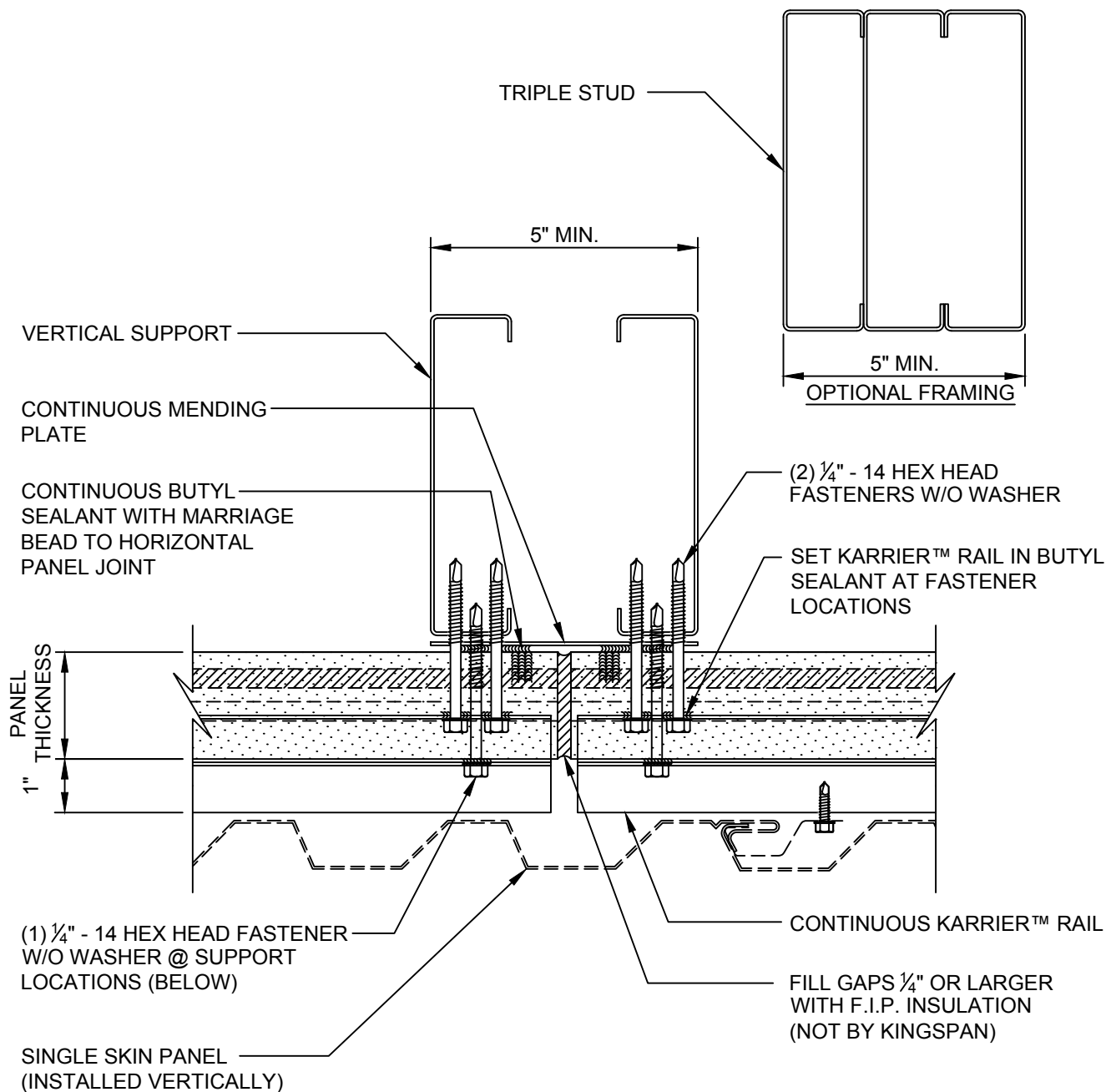
DETAIL #: KPH-PJ-03-MTLV

DATE: 2019



www.kingspanpanels.us
www.kingspanpanels.ca

HORIZONTAL KARRIER™ PANEL - VERTICAL METAL FACADE



NOTE:
FOR PROJECTS REQUIRING NFPA 285:
INTERIOR SIDE OF FRAMING MUST
HAVE 5/8" THICK FIRE BLOCK TYPE X
GYPSUM BOARD (NOT BY KINGSPAN)

VERTICAL JOINT

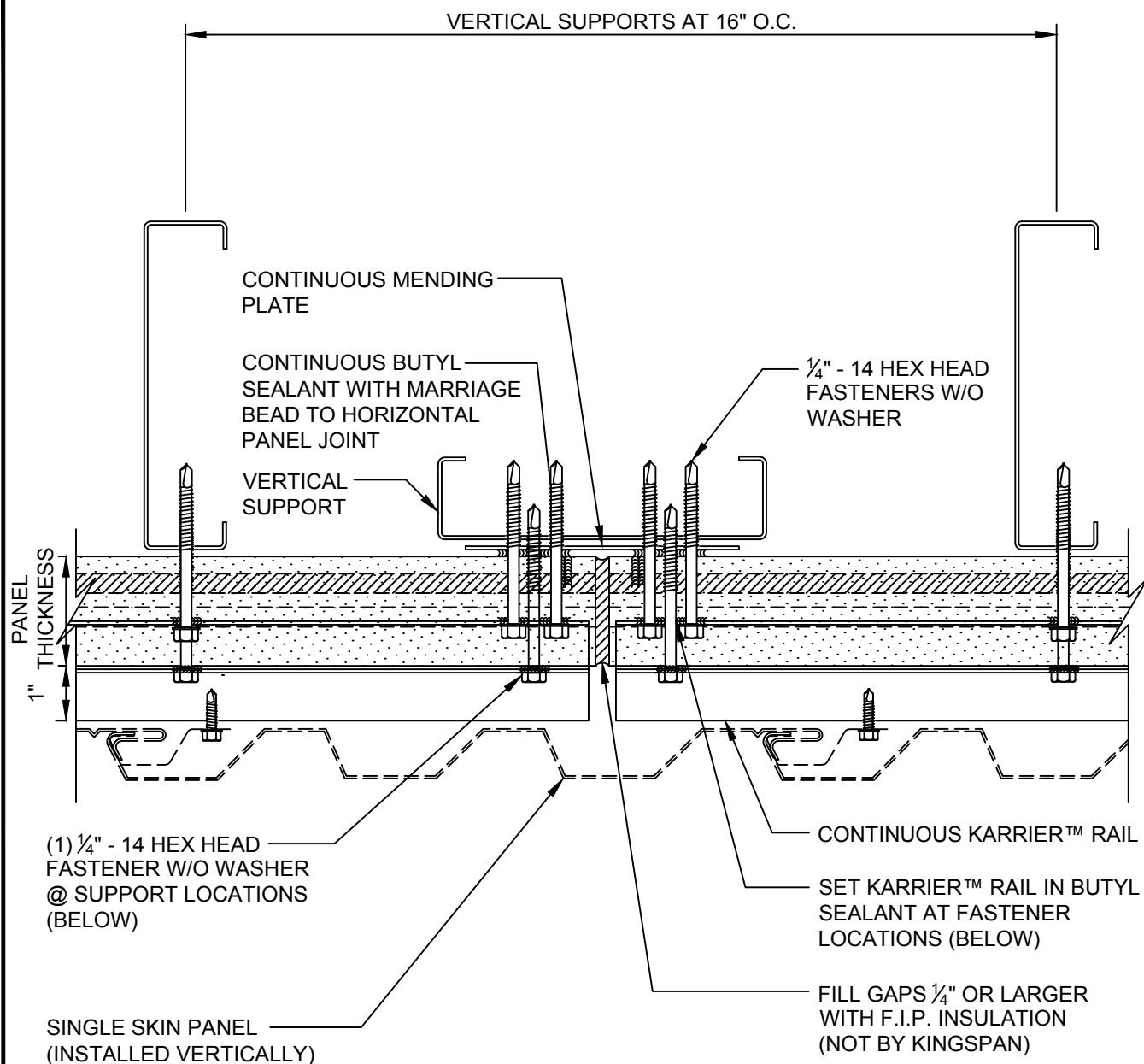
DETAIL #: KPH-PJ-04-MTLV

DATE: 2019



www.kingspanpanels.us
www.kingspanpanels.ca

HORIZONTAL KARRIER™ PANEL - VERTICAL METAL FACADE



NOTE:
FOR PROJECTS REQUIRING NFPA 285:
INTERIOR SIDE OF FRAMING MUST
HAVE 5/8" THICK FIRE BLOCK TYPE X
GYPSUM BOARD (NOT BY KINGSPAN)

VERTICAL JOINT
BETWEEN STUDS

DETAIL #: KPH-PJ-05-MTLV

DATE: 2019



www.kingspanpanels.us
www.kingspanpanels.ca

HORIZONTAL KARRIER™ PANEL - VERTICAL METAL FACADE

NOTE:
FOR PROJECTS REQUIRING NFPA 285:
INTERIOR SIDE OF FRAMING MUST
HAVE 5/8" THICK FIRE BLOCK TYPE X
GYPSUM BOARD (NOT BY KINGSPAN)

FLOOR SLAB, FRAMING
AND OTHER MATERIALS
(NOT BY KINGSPAN)

KARRIER PANEL
INSTALLED
HORIZONTALLY

FACADE PANEL
(INSTALLED
VERTICALLY)

F.F.

8" MIN

COMPLETELY FILL VOID BETWEEN
INSULATED METAL PANEL SYSTEM
AND FACADE WITH MIN 4PSI
CONTINUOUS FIRE BLOCKING AT
EACH FLOOR LINE
(NOT BY KINGSPAN)

INSULATION WASHER
AND FASTENERS @
12" O.C.
(NOT BY KINGSPAN)

VOID

MULTI-STORY FIRE
STOPPING DETAIL

DETAIL #: KPH-FS-01-MTLV

DATE: 2019



www.kingspanpanels.us
www.kingspanpanels.ca

HORIZONTAL KARRIER™ PANEL - VERTICAL METAL FACADE

NOTE:
FOR PROJECTS REQUIRING NFPA 285:
INTERIOR SIDE OF FRAMING MUST
HAVE $\frac{5}{8}$ " THICK FIRE BLOCK TYPE X
GYPSUM BOARD (NOT BY KINGSPAN)

NOTE:
FASTENING AND OTHER MATERIALS
NOT SHOWN FOR CLARITY OF
DETAIL

FLOOR SLAB, FRAMING
AND OTHER MATERIALS
(NOT BY KINGSPAN)

KARRIER PANEL INSTALLED
HORIZONTALLY KARRIER RAIL
NOT SHOWN FOR CLARITY

COMPLETELY FILL VOID
BETWEEN INSULATED
METAL PANEL SYSTEM AND
FACADE WITH MIN. 4 PSI
CONTINUOUS FIRE
BLOCKING AT EACH FLOOR
LINE
(NOT BY KINGSPAN)

INSULATION WASHER AND
FASTENERS @ 12" O.C.
(NOT BY KINGSPAN)

MAXIMUM 20'-0" O.C.

COMPLETELY FILL VOID BETWEEN
INSULATED METAL PANEL SYSTEM
AND FACADE WITH MIN. 4 PSI
CONTINUOUS FIRE BLOCKING AT
MAX. 20'-0" O.C. SPACING
(NOT BY KINGSPAN)

MULTI-STORY FIRE STOPPING ASSEMBLY

DETAIL #: KPH-FS-02-MTLV

DATE: 2019



www.kingspanpanels.us
www.kingspanpanels.ca

HORIZONTAL KARRIER™ PANEL - VERTICAL METAL FACADE

NOTE:
FOR PROJECTS REQUIRING NFPA 285:
INTERIOR SIDE OF FRAMING MUST
HAVE $\frac{5}{8}$ " THICK FIRE BLOCK TYPE X
GYPSUM BOARD (NOT BY KINGSPAN)

NOTE:
FASTENING AND OTHER MATERIALS
NOT SHOWN FOR CLARITY OF
DETAIL

FLOOR SLAB, FRAMING
AND OTHER MATERIALS
(NOT BY KINGSPAN)

COMPLETELY FILL VOID
BETWEEN INSULATED
METAL PANEL SYSTEM AND
FACADE WITH MIN. 4 PSI
CONTINUOUS FIRE
BLOCKING AT EACH FLOOR
LINE
(NOT BY KINGSPAN)

COMPLETELY FILL VOID
BETWEEN INSULATED METAL
PANEL SYSTEM AND FACADE
WITH MIN. 4 PSI
CONTINUOUS FIRE
BLOCKING AT MAX. 20'-0"
O.C. SPACING
(NOT BY KINGSPAN)

KARRIER PANEL INSTALLED
HORIZONTALLY KARRIER RAIL
NOT SHOWN FOR CLARITY

FACADE PANEL
(INSTALLED
VERTICALLY)

KARRIER RAIL

INSULATION WASHER AND
FASTENERS @ 12" O.C.
(NOT BY KINGSPAN)

MULTI-STORY FIRE STOPPING ASSEMBLY

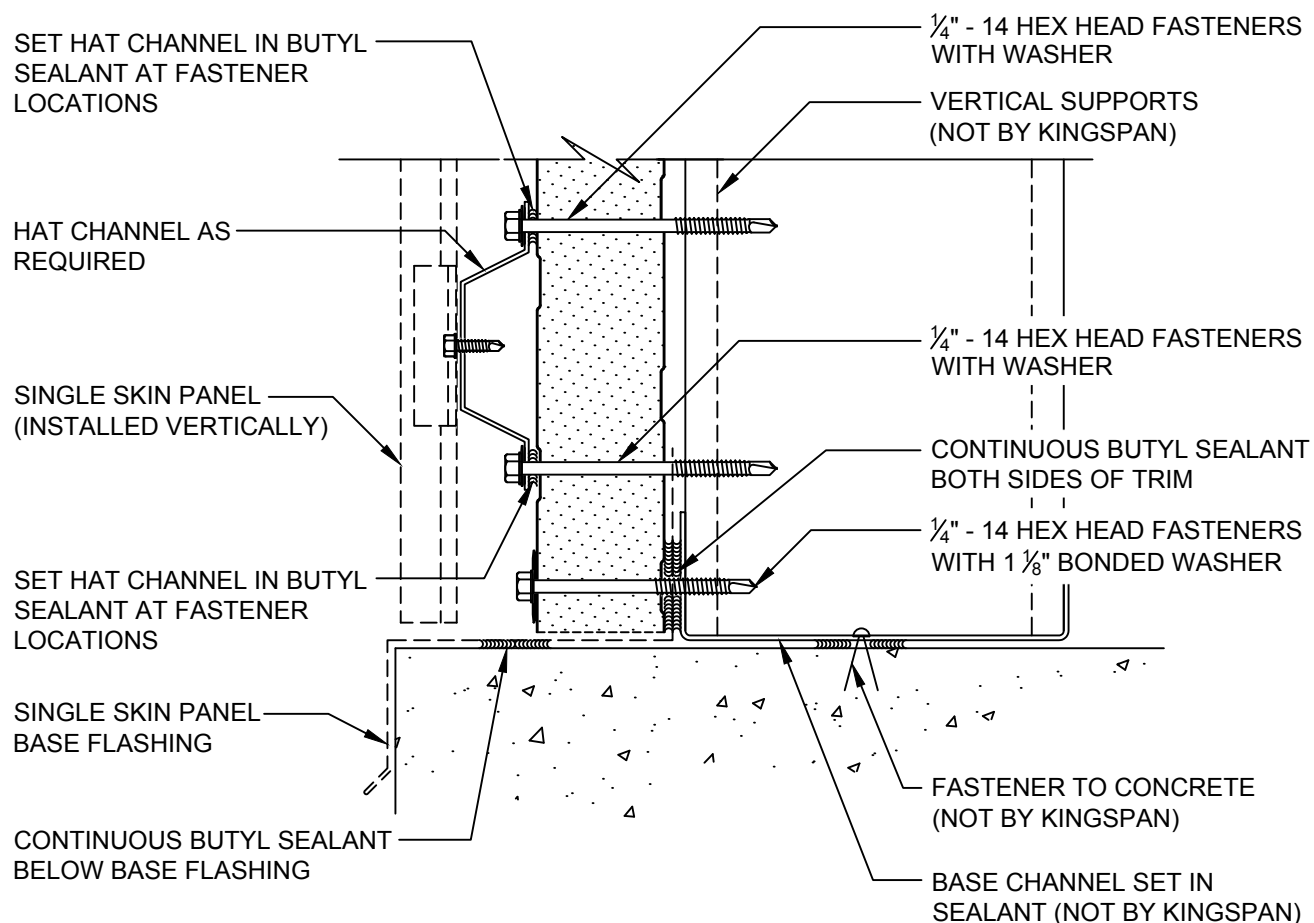
DETAIL #: KPH-FS-03-MTLV

DATE: 2019



www.kingspanpanels.us
www.kingspanpanels.ca

HORIZONTAL KARRIER™ PANEL - VERTICAL METAL FACADE



NOTE:
FOR PROJECTS REQUIRING NFPA 285:
INTERIOR SIDE OF FRAMING MUST
HAVE 5/8" THICK FIRE BLOCK TYPE X
GYPSUM BOARD (NOT BY KINGSPAN)

**BASE DETAIL
FLUSH**

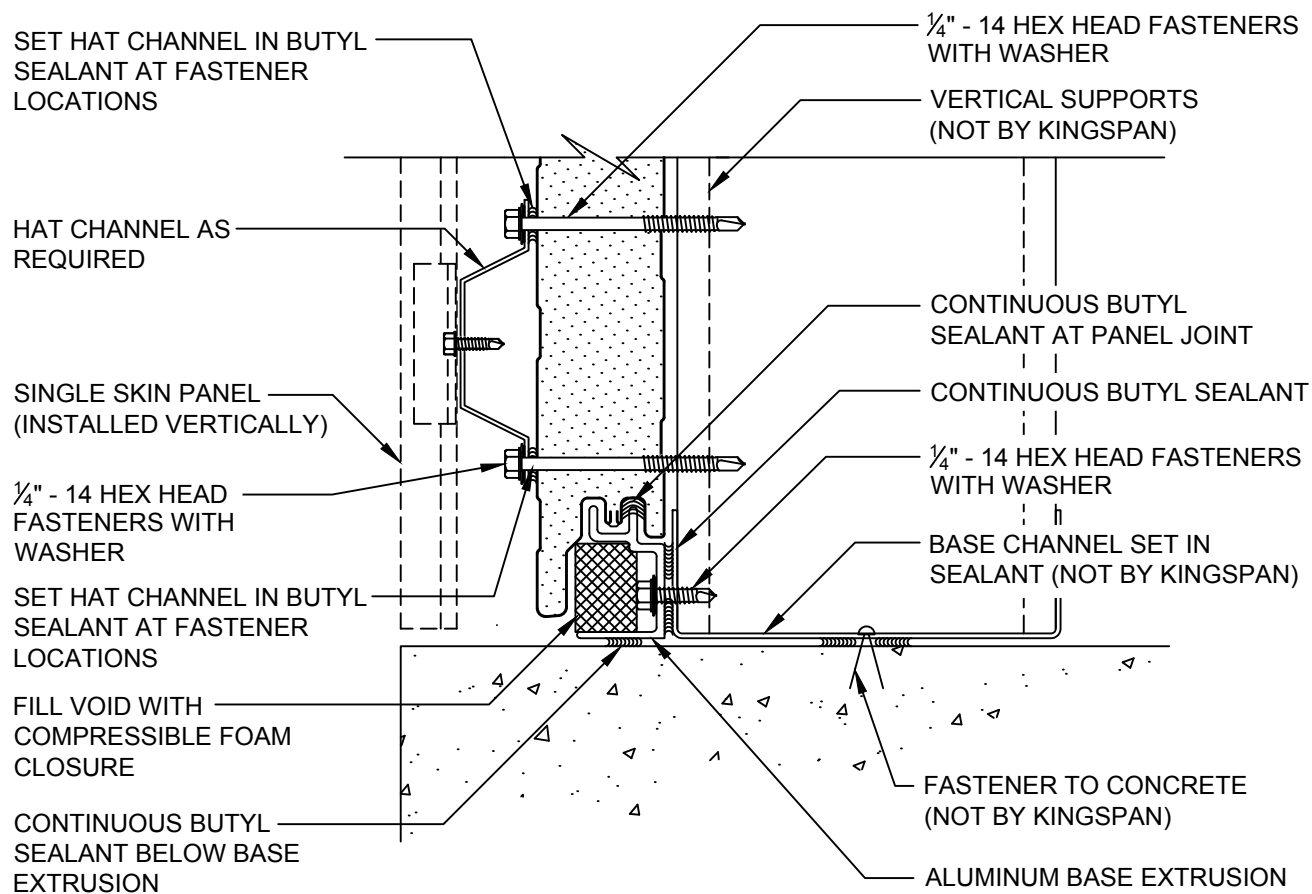
DETAIL #: KPH-BS-01-MTLV

DATE: 2017



www.kingspanpanels.us
www.kingspanpanels.ca

HORIZONTAL KARRIER™ PANEL - VERTICAL METAL FACADE



NOTE:
FOR PROJECTS REQUIRING NFPA 285:
INTERIOR SIDE OF FRAMING MUST
HAVE 5/8" THICK FIRE BLOCK TYPE X
GYPSUM BOARD (NOT BY KINGSPAN)

**BASE DETAIL
FLUSH WITH
EXTRUSION**

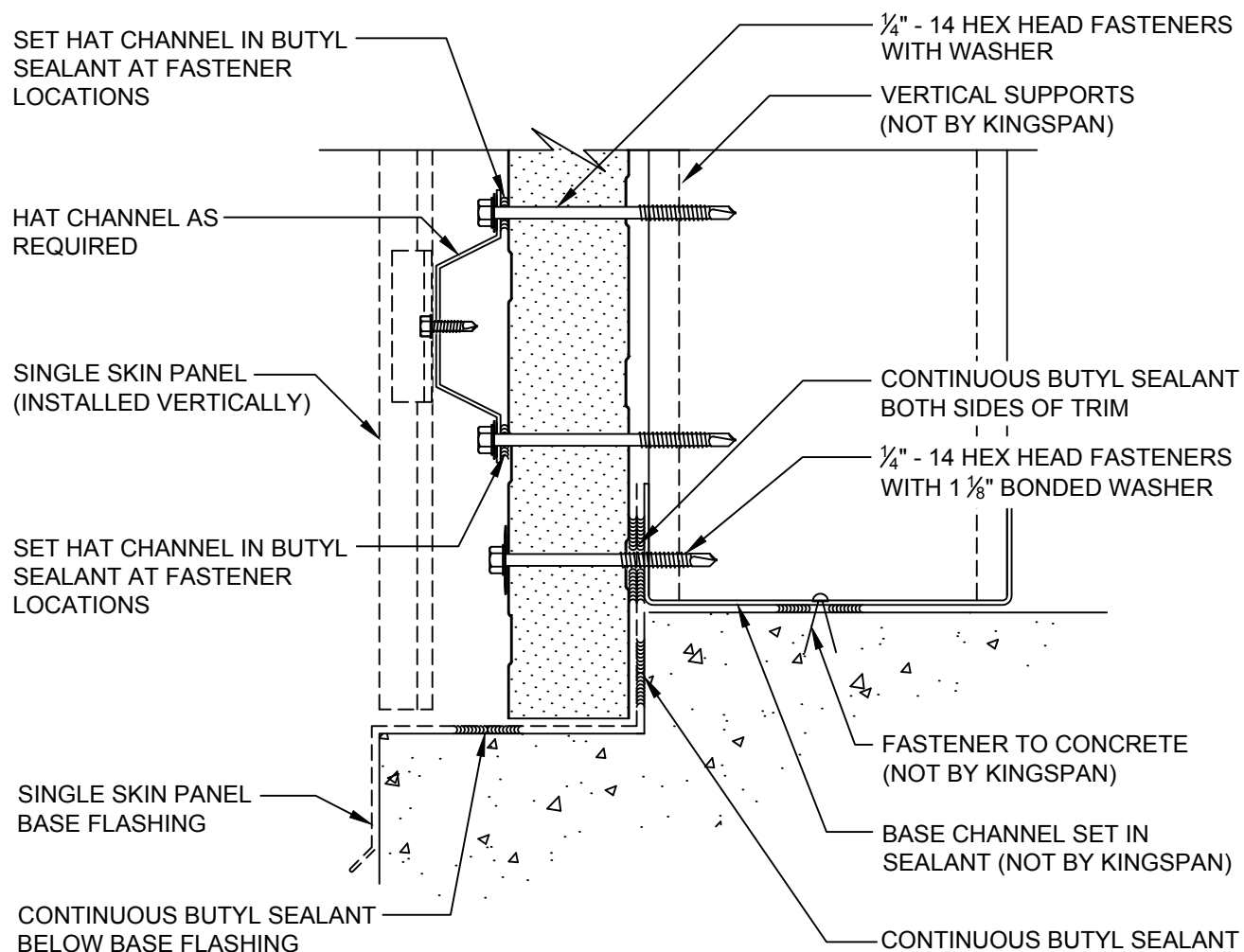
DETAIL #: KPH-BS-02-MTLV

DATE: 2019



www.kingspanpanels.us
www.kingspanpanels.ca

HORIZONTAL KARRIER™ PANEL - VERTICAL METAL FACADE



NOTE:
FOR PROJECTS REQUIRING NFPA 285:
INTERIOR SIDE OF FRAMING MUST
HAVE 5/8" THICK FIRE BLOCK TYPE X
GYPSUM BOARD (NOT BY KINGSPAN)

**BASE AT NOTCHED
CONCRETE**

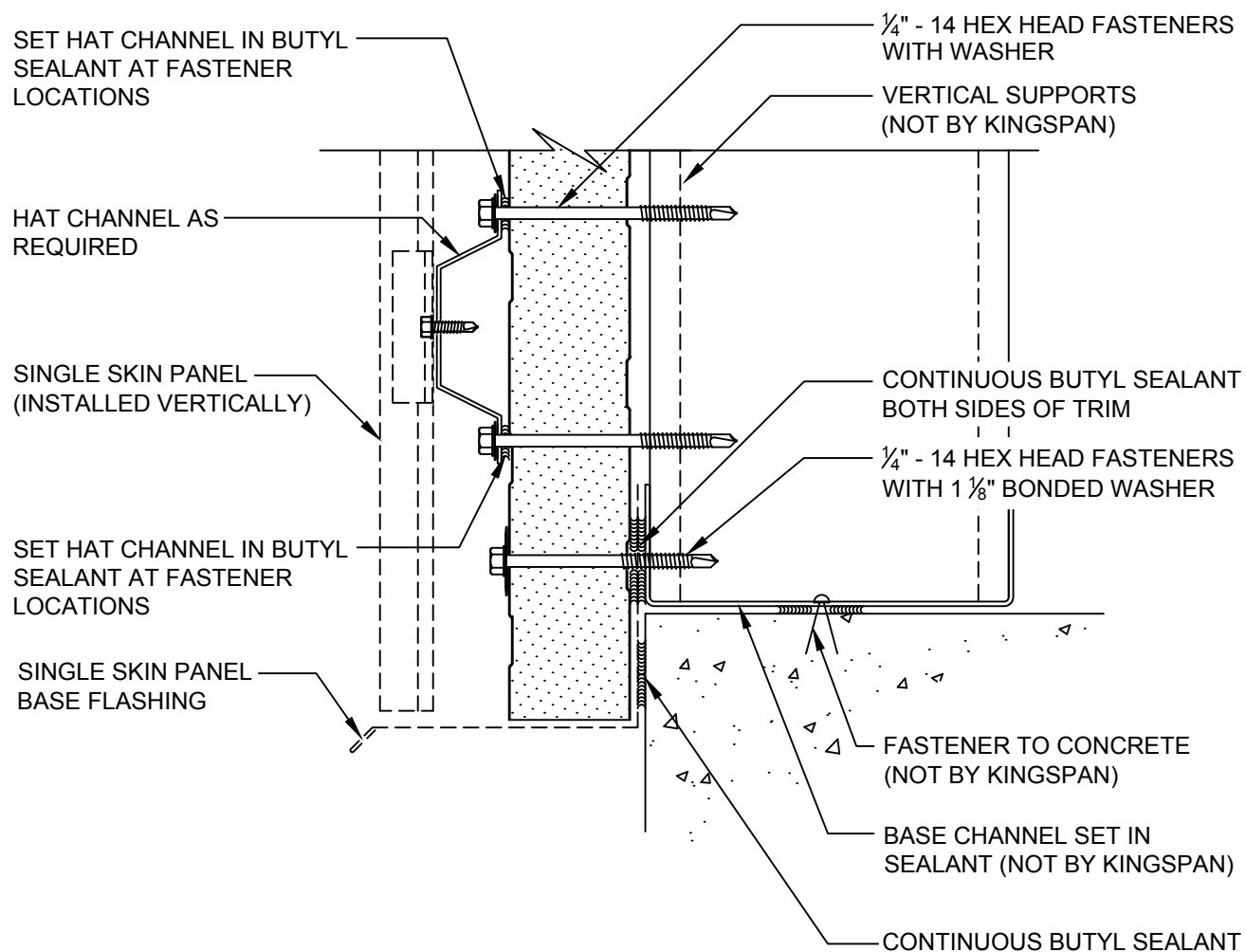
DETAIL #: KPH-BS-03-MTLV

DATE: 2019



www.kingspanpanels.us
www.kingspanpanels.ca

HORIZONTAL KARRIER™ PANEL - VERTICAL METAL FACADE



NOTE:
FOR PROJECTS REQUIRING NFPA 285:
INTERIOR SIDE OF FRAMING MUST
HAVE 5/8" THICK FIRE BLOCK TYPE X
GYPSUM BOARD (NOT BY KINGSPAN)

BASE AT OVERHANG

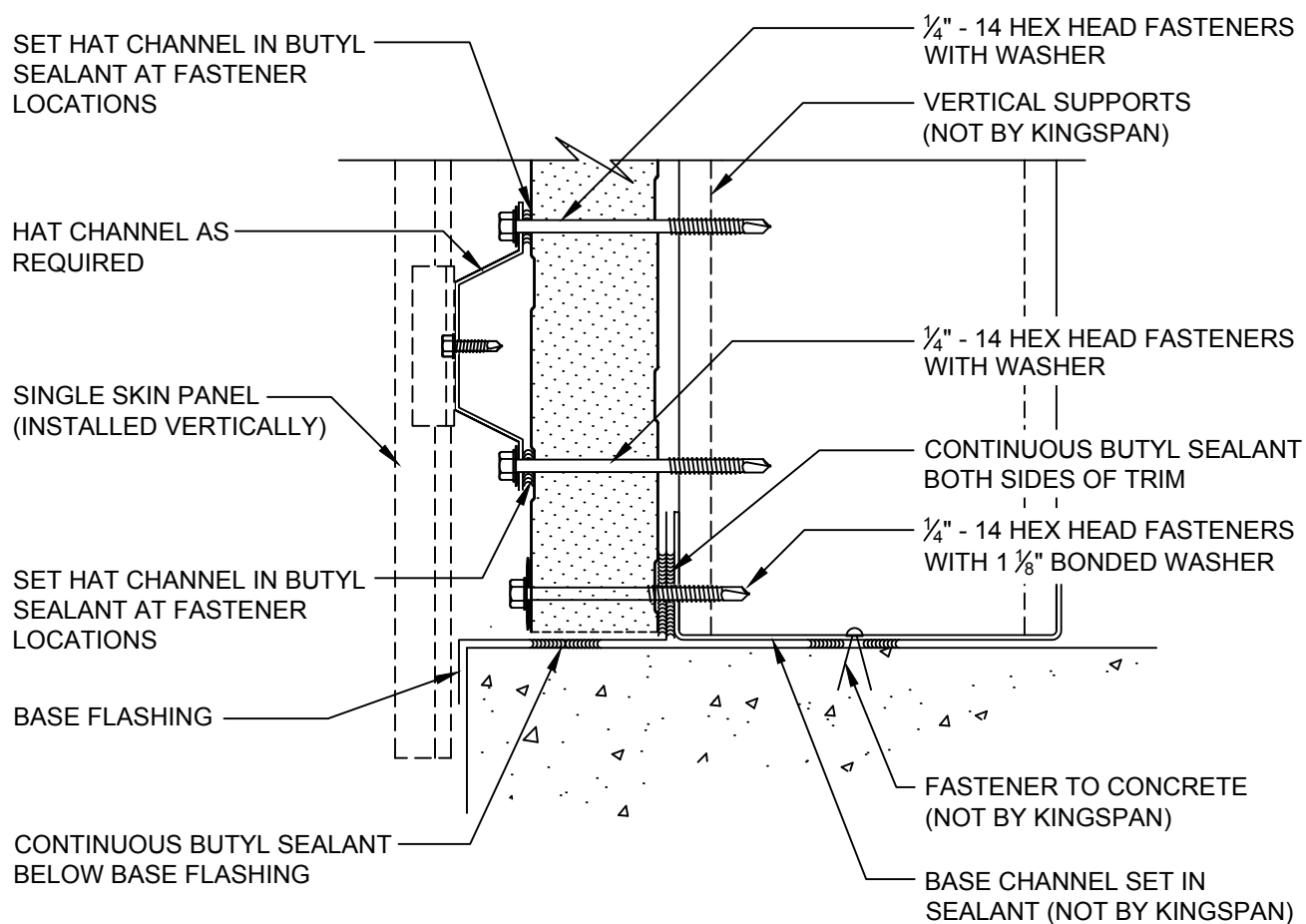
DETAIL #: KPH-BS-04-MTLV

DATE: 2019

Kingspan
Insulated Panels

www.kingspanpanels.us
www.kingspanpanels.ca

HORIZONTAL KARRIER™ PANEL - VERTICAL METAL FACADE



NOTE:
FOR PROJECTS REQUIRING NFPA 285:
INTERIOR SIDE OF FRAMING MUST
HAVE $\frac{5}{8}$ " THICK FIRE BLOCK TYPE X
GYPSUM BOARD (NOT BY KINGSPAN)

BASE AT OVERHANG
SINGLE SKIN

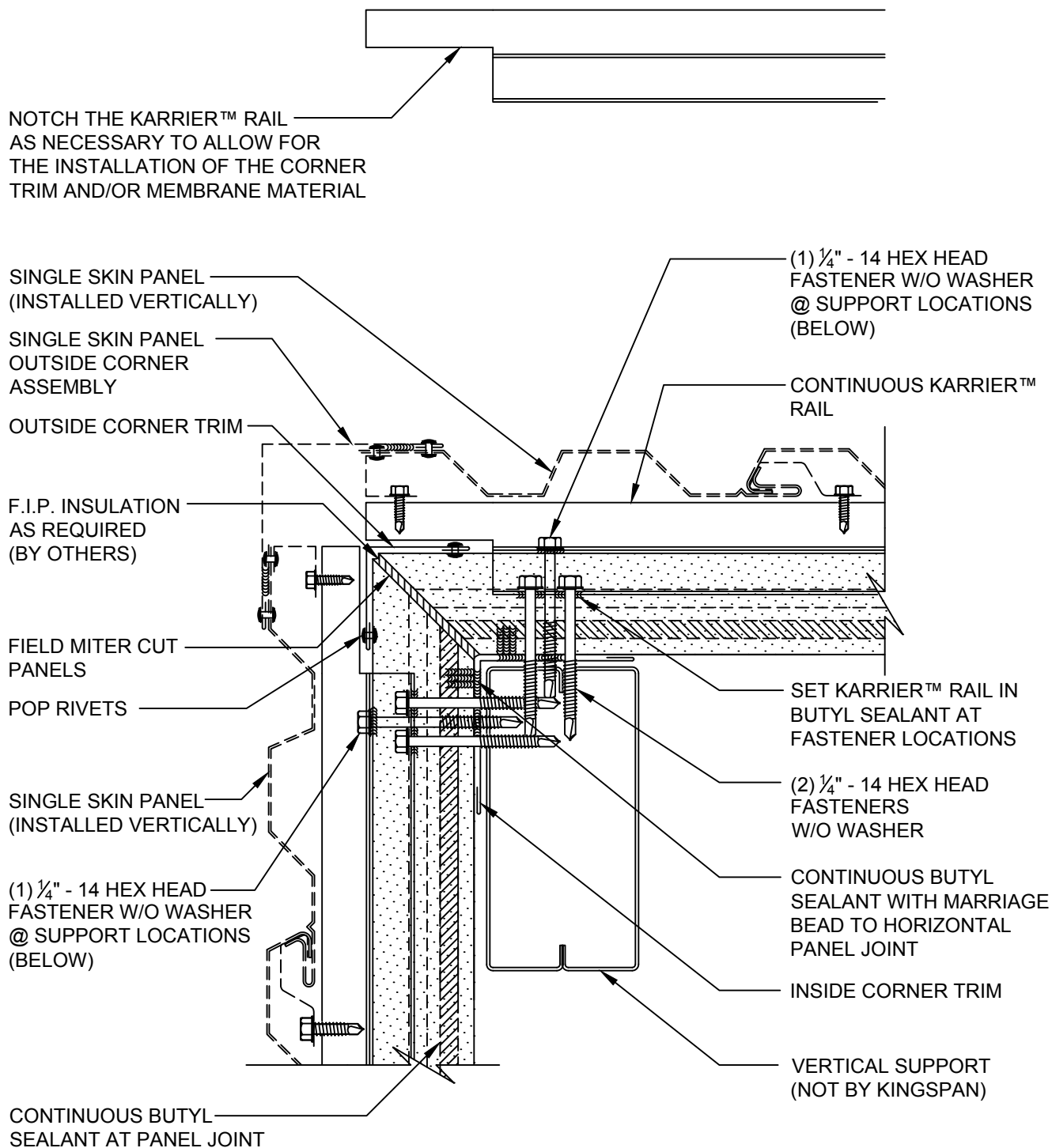
DETAIL #: KPH-BS-05-MTLV

DATE: 2019



www.kingspanpanels.us
www.kingspanpanels.ca

HORIZONTAL KARRIER™ PANEL - VERTICAL METAL FACADE



NOTE:
FOR PROJECTS REQUIRING NFPA 285:
INTERIOR SIDE OF FRAMING MUST
HAVE 5/8" THICK FIRE BLOCK TYPE X
GYPSUM BOARD (NOT BY KINGSPAN)

OUTSIDE CORNER
(HIGH CELL)

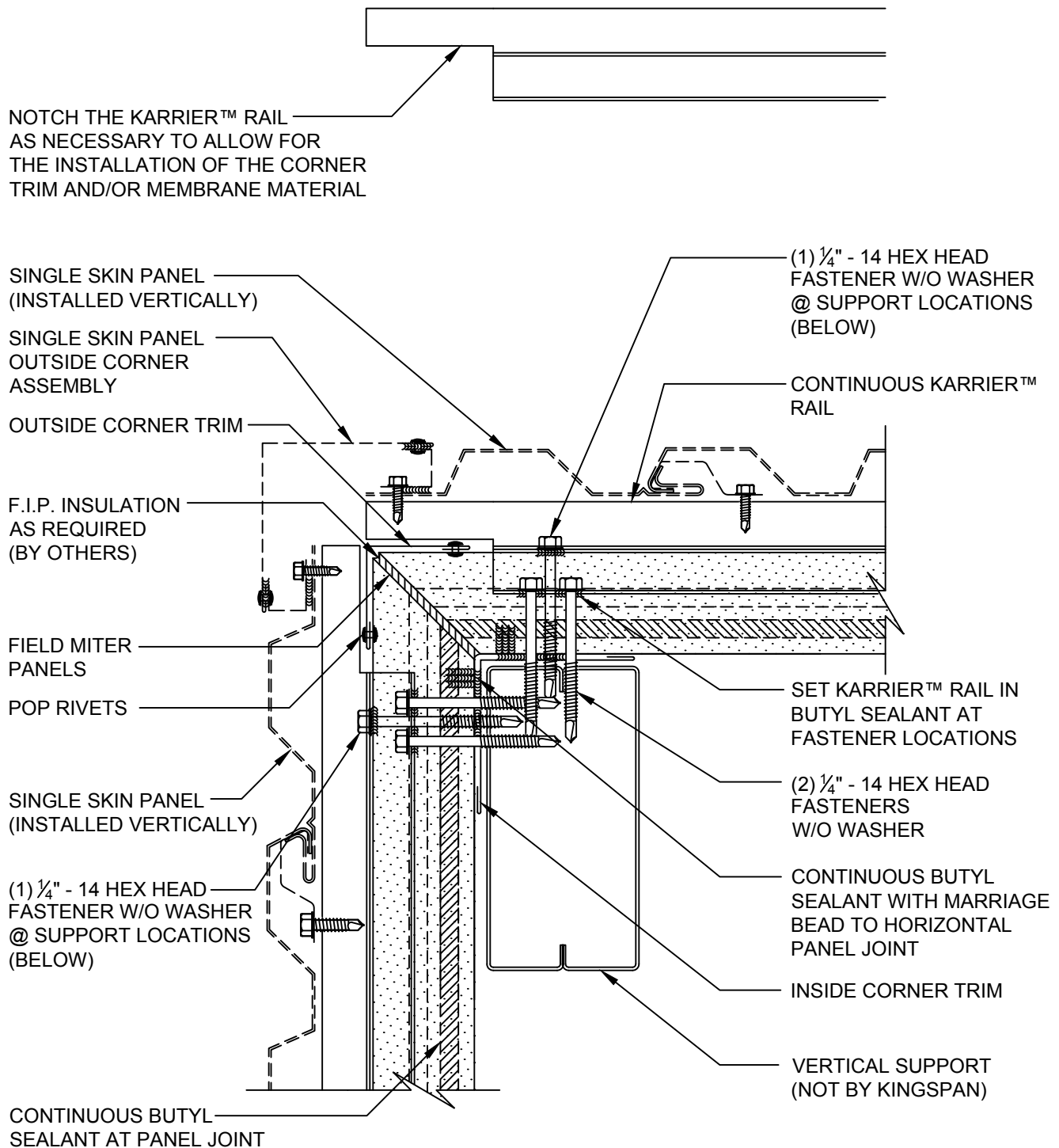
DETAIL #: KPH-OC-01-MTLV

DATE: 2019



www.kingspanpanels.us
www.kingspanpanels.ca

HORIZONTAL KARRIER™ PANEL - VERTICAL METAL FACADE



NOTE:
FOR PROJECTS REQUIRING NFPA 285:
INTERIOR SIDE OF FRAMING MUST
HAVE 5/8" THICK FIRE BLOCK TYPE X
GYPSUM BOARD (NOT BY KINGSPAN)

OUTSIDE CORNER
(LOW CELL)

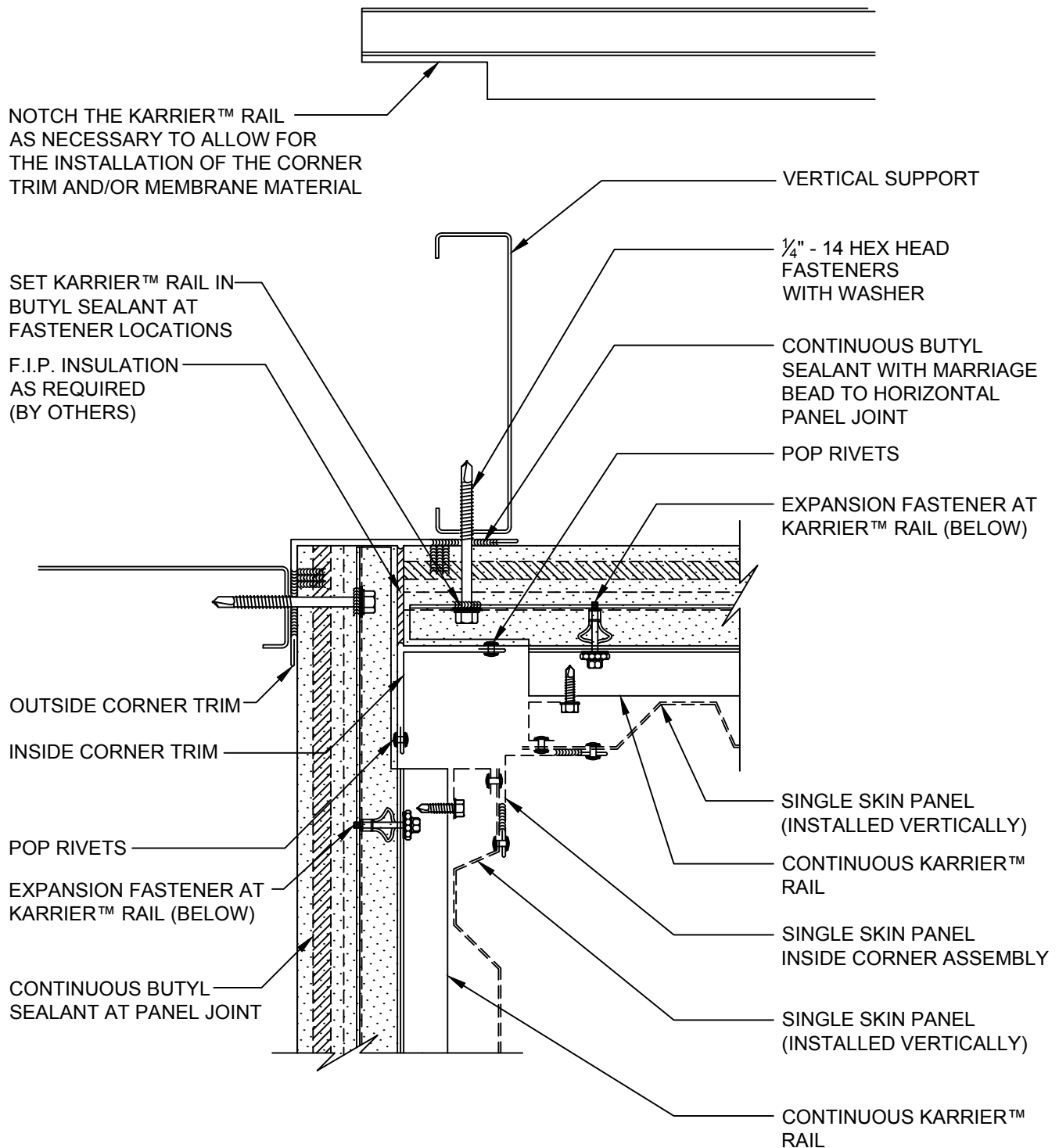
DETAIL #: KPH-OC-02-MTLV

DATE: 2019

Kingspan
Insulated Panels

www.kingspanpanels.us
www.kingspanpanels.ca

HORIZONTAL KARRIER™ PANEL - VERTICAL METAL FACADE



NOTE:
FOR PROJECTS REQUIRING NFPA 285:
INTERIOR SIDE OF FRAMING MUST
HAVE 5/8" THICK FIRE BLOCK TYPE X
GYPSUM BOARD (NOT BY KINGSPAN)

**INSIDE CORNER
(HIGH CELL)**

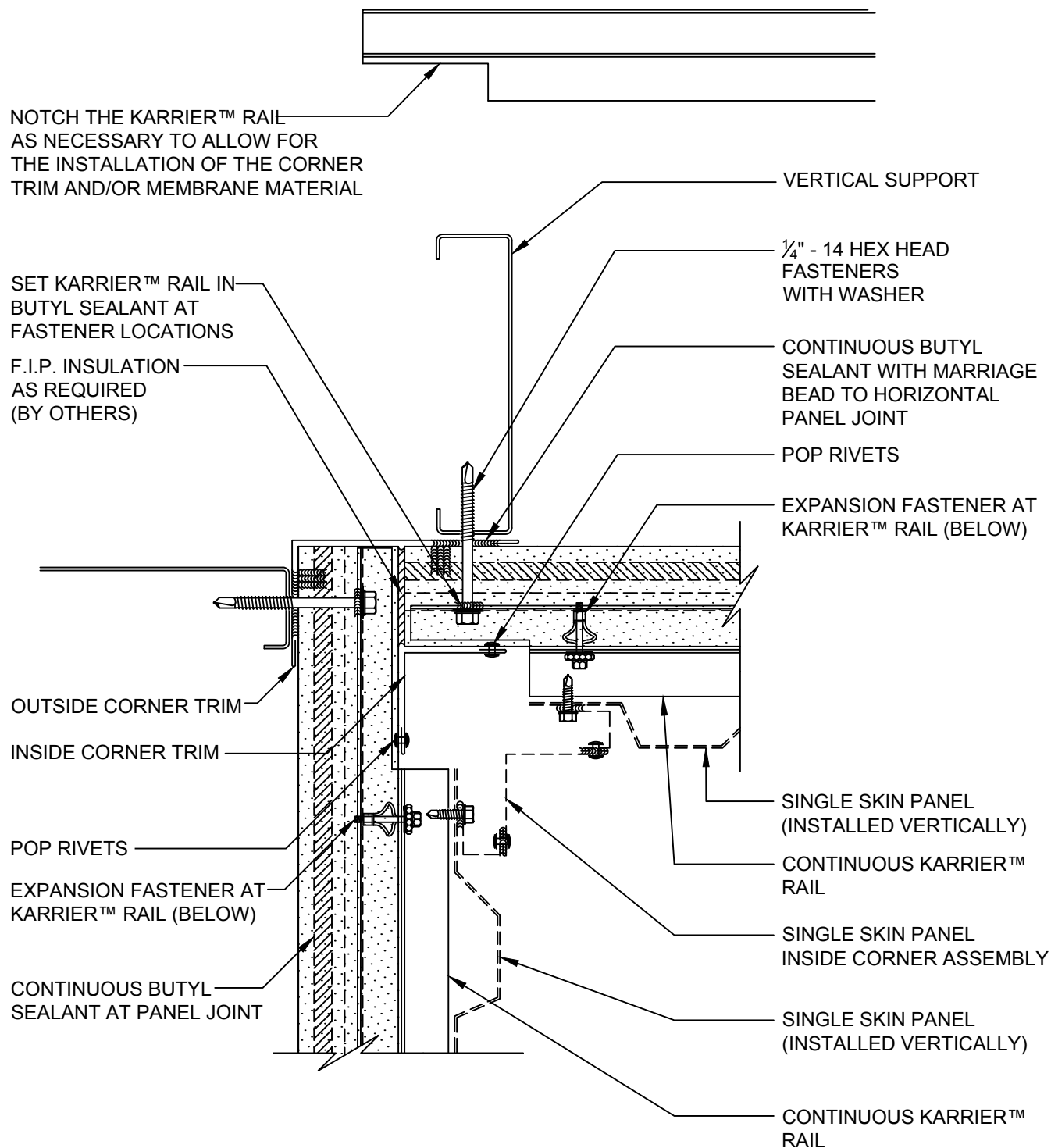
DETAIL #: KPH-IC-01-MTLV

DATE: 2019

Kingspan
Insulated Panels

www.kingspanpanels.us
www.kingspanpanels.ca

HORIZONTAL KARRIER™ PANEL - VERTICAL METAL FACADE



NOTE:
FOR PROJECTS REQUIRING NFPA 285:
INTERIOR SIDE OF FRAMING MUST
HAVE 5/8" THICK FIRE BLOCK TYPE X
GYPSUM BOARD (NOT BY KINGSPAN)

INSIDE CORNER
(LOW CELL)

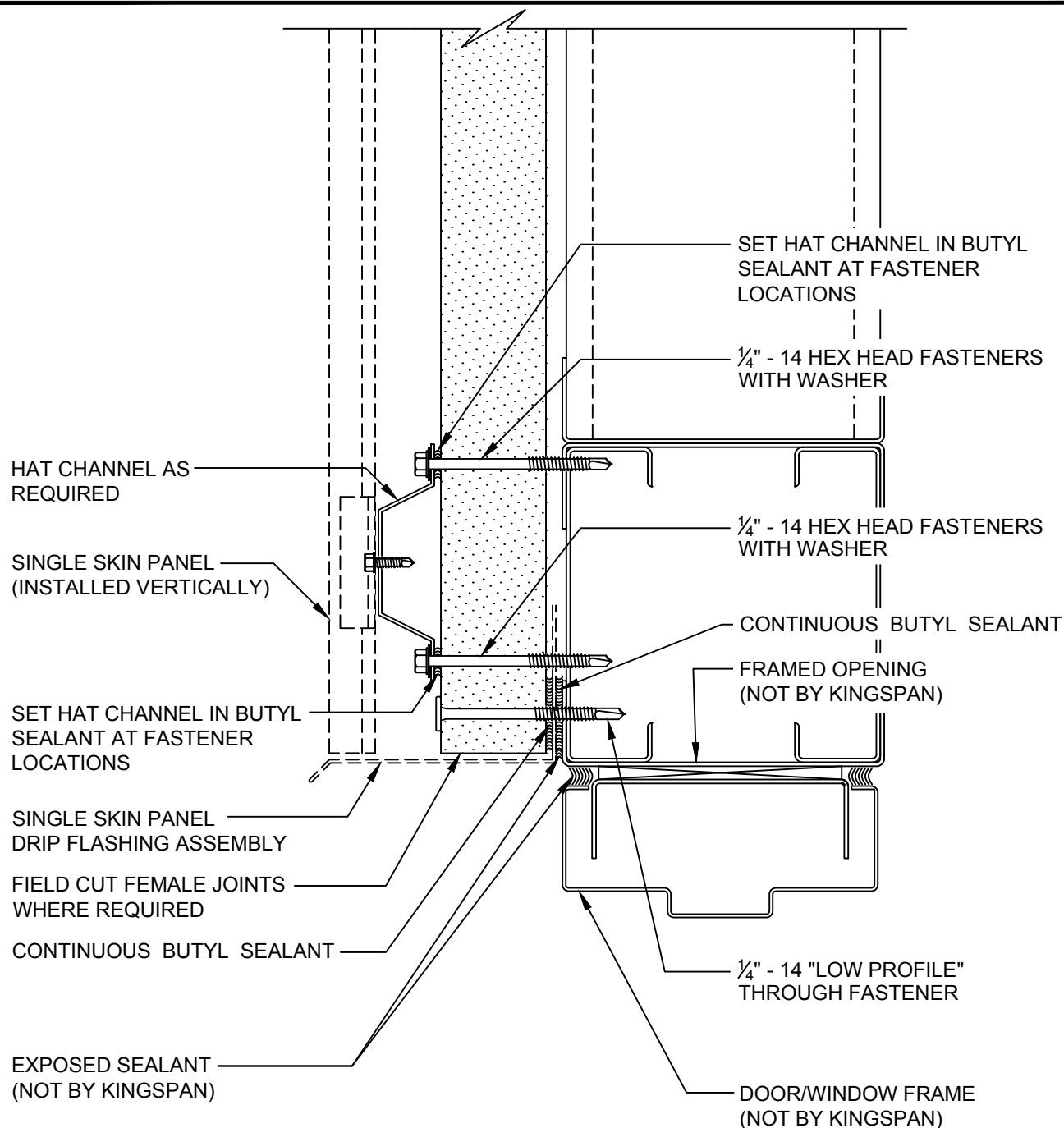
DETAIL #: KPH-IC-02-MTLV

DATE: 2019

Kingspan
Insulated Panels

www.kingspanpanels.us
www.kingspanpanels.ca

HORIZONTAL KARRIER™ PANEL - VERTICAL METAL FACADE



NOTE:
FOR PROJECTS REQUIRING NFPA 285:
INTERIOR SIDE OF FRAMING MUST
HAVE 5/8" THICK FIRE BLOCK TYPE X
GYPSUM BOARD (NOT BY KINGSPAN)

FRAMED OPENING HEAD

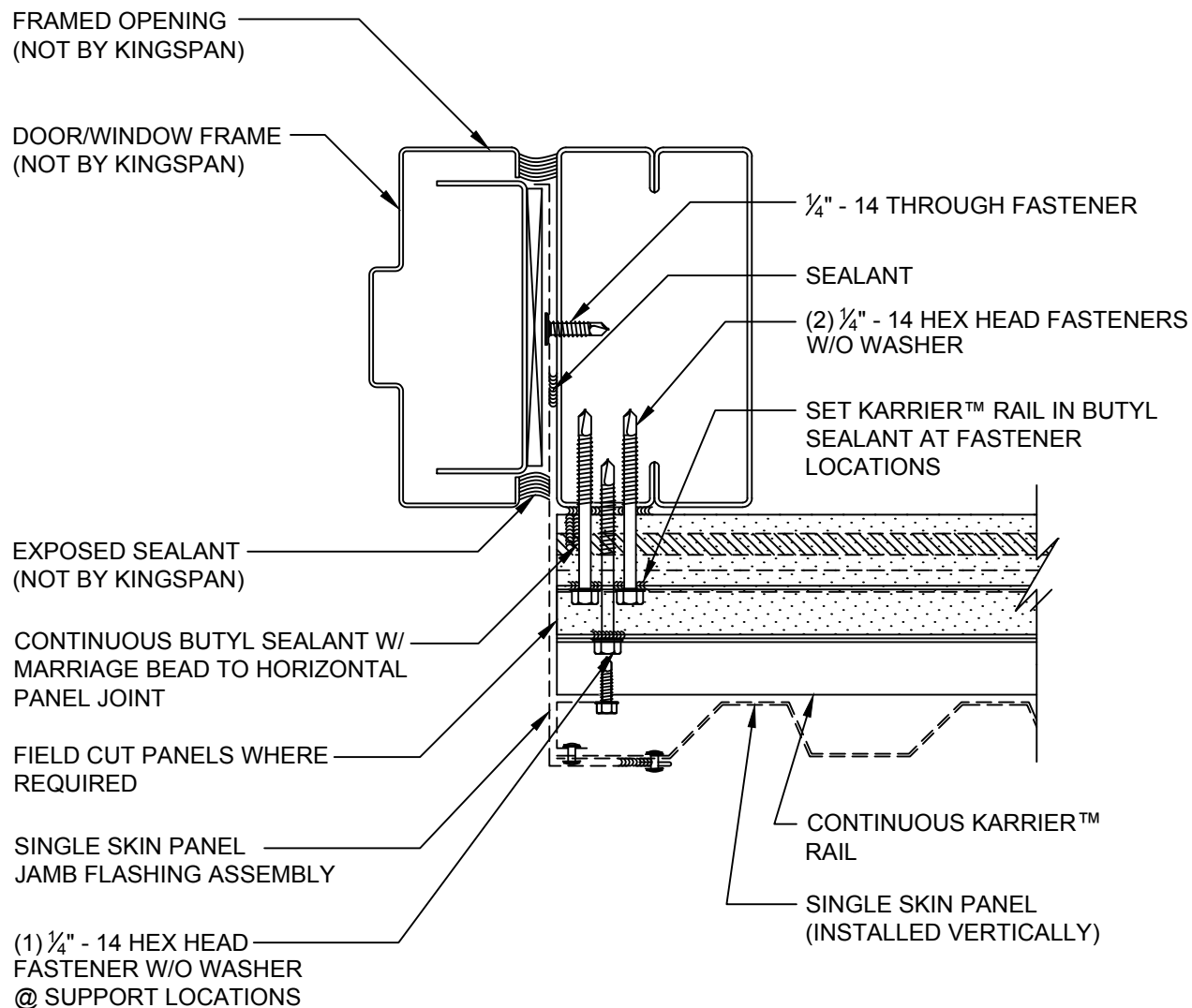
DETAIL #: KPH-FO-01-MTLV

DATE: 2019



www.kingspanpanels.us
www.kingspanpanels.ca

HORIZONTAL KARRIER™ PANEL - VERTICAL METAL FACADE



NOTE:
FOR PROJECTS REQUIRING NFPA 285:
INTERIOR SIDE OF FRAMING MUST
HAVE 5/8" THICK FIRE BLOCK TYPE X
GYPSUM BOARD (NOT BY KINGSPAN)

**FRAMED OPENING
JAMB (HIGH CELL)**

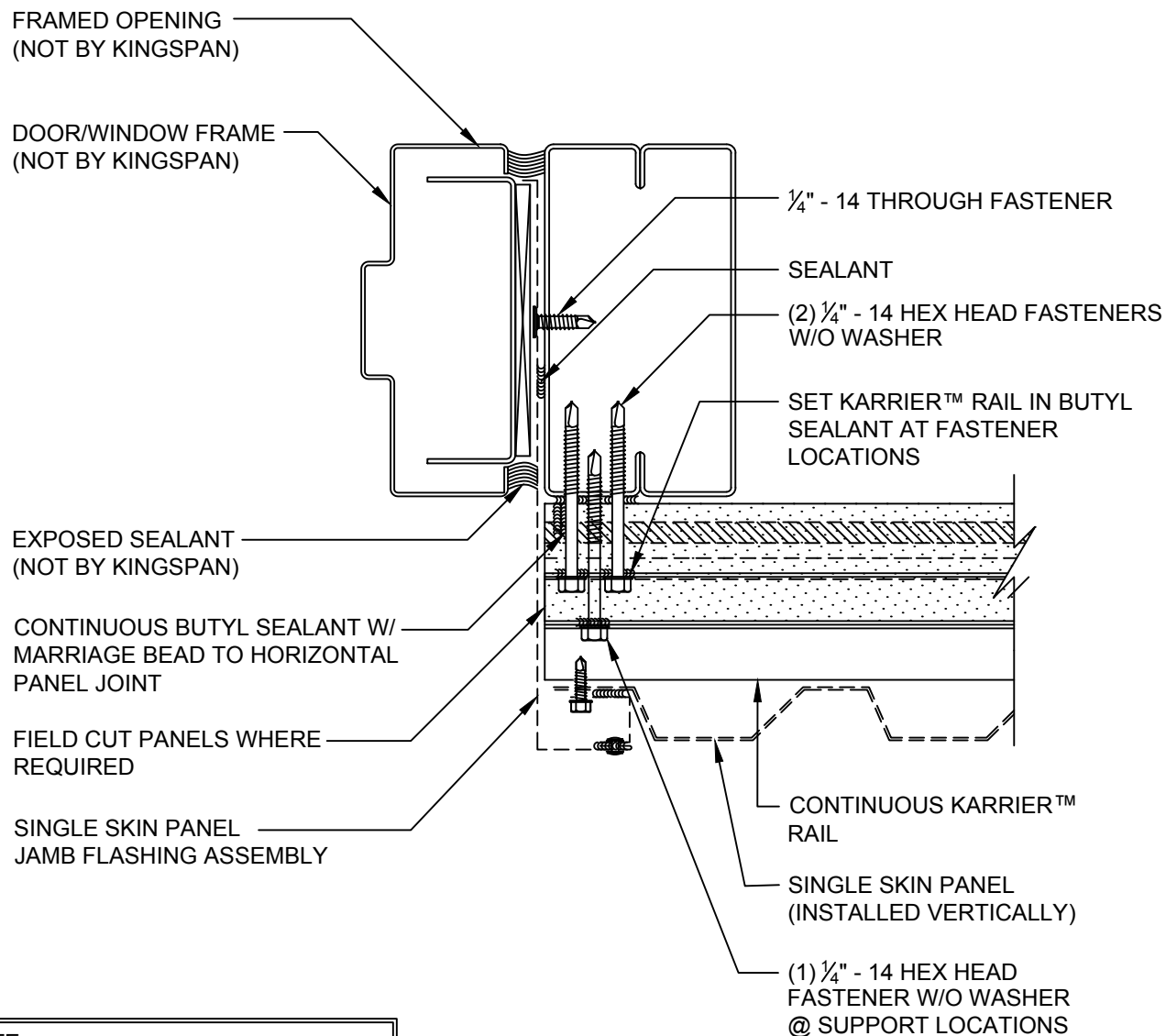
DETAIL #: KPH-FO-02-MTLV

DATE: 2019



www.kingspanpanels.us
www.kingspanpanels.ca

HORIZONTAL KARRIER™ PANEL - VERTICAL METAL FACADE



NOTE:
FOR PROJECTS REQUIRING NFPA 285:
INTERIOR SIDE OF FRAMING MUST
HAVE 5/8" THICK FIRE BLOCK TYPE X
GYPSUM BOARD (NOT BY KINGSPAN)

**FRAMED OPENING
JAMB (LOW CELL)**

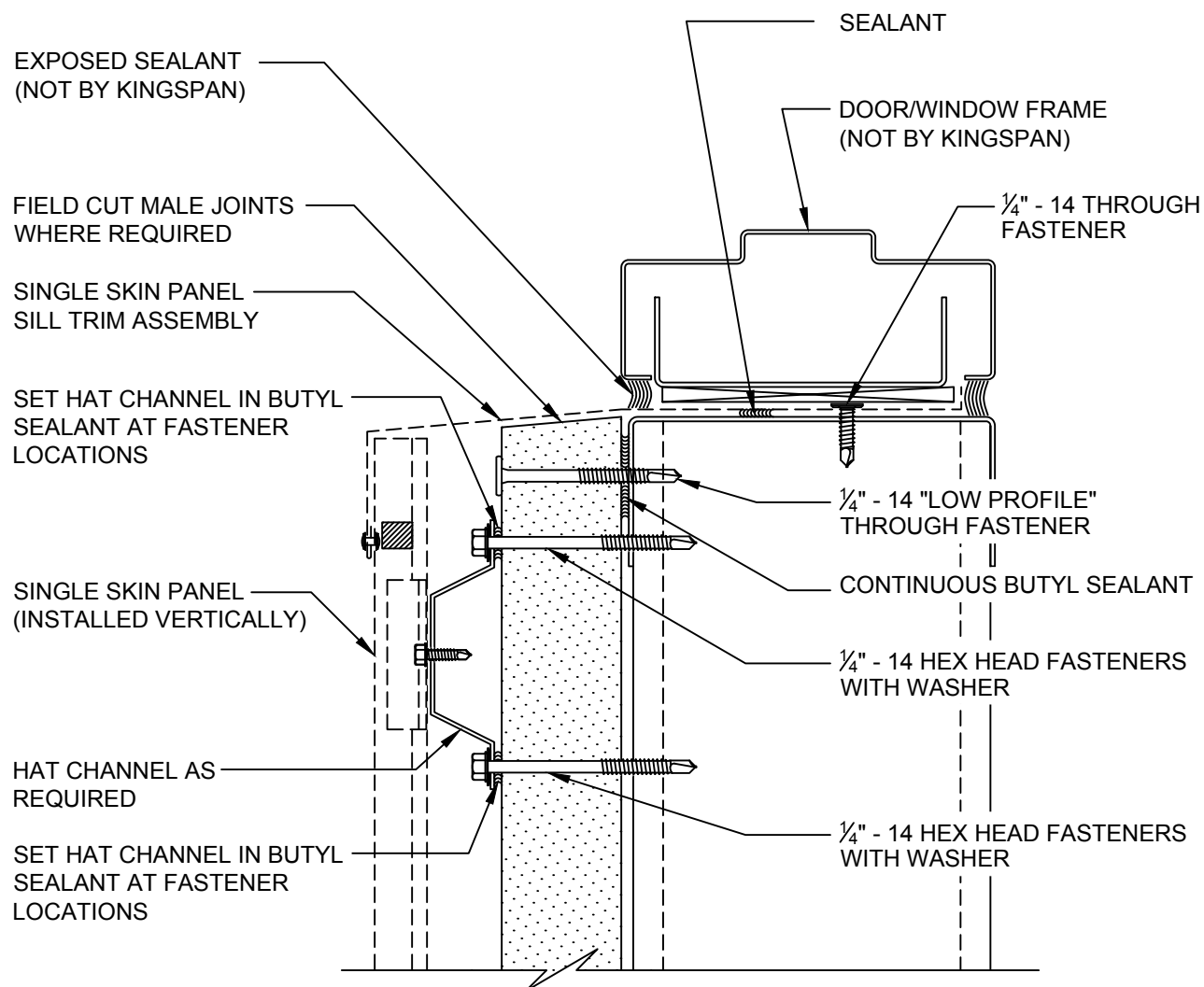
DETAIL #: KPH-FO-03-MTLV

DATE: 2019



www.kingspanpanels.us
www.kingspanpanels.ca

HORIZONTAL KARRIER™ PANEL - VERTICAL METAL FACADE



NOTE:
FOR PROJECTS REQUIRING NFPA 285:
INTERIOR SIDE OF FRAMING MUST
HAVE 5/8" THICK FIRE BLOCK TYPE X
GYPSUM BOARD (NOT BY KINGSPAN)

FRAMED OPENING SILL

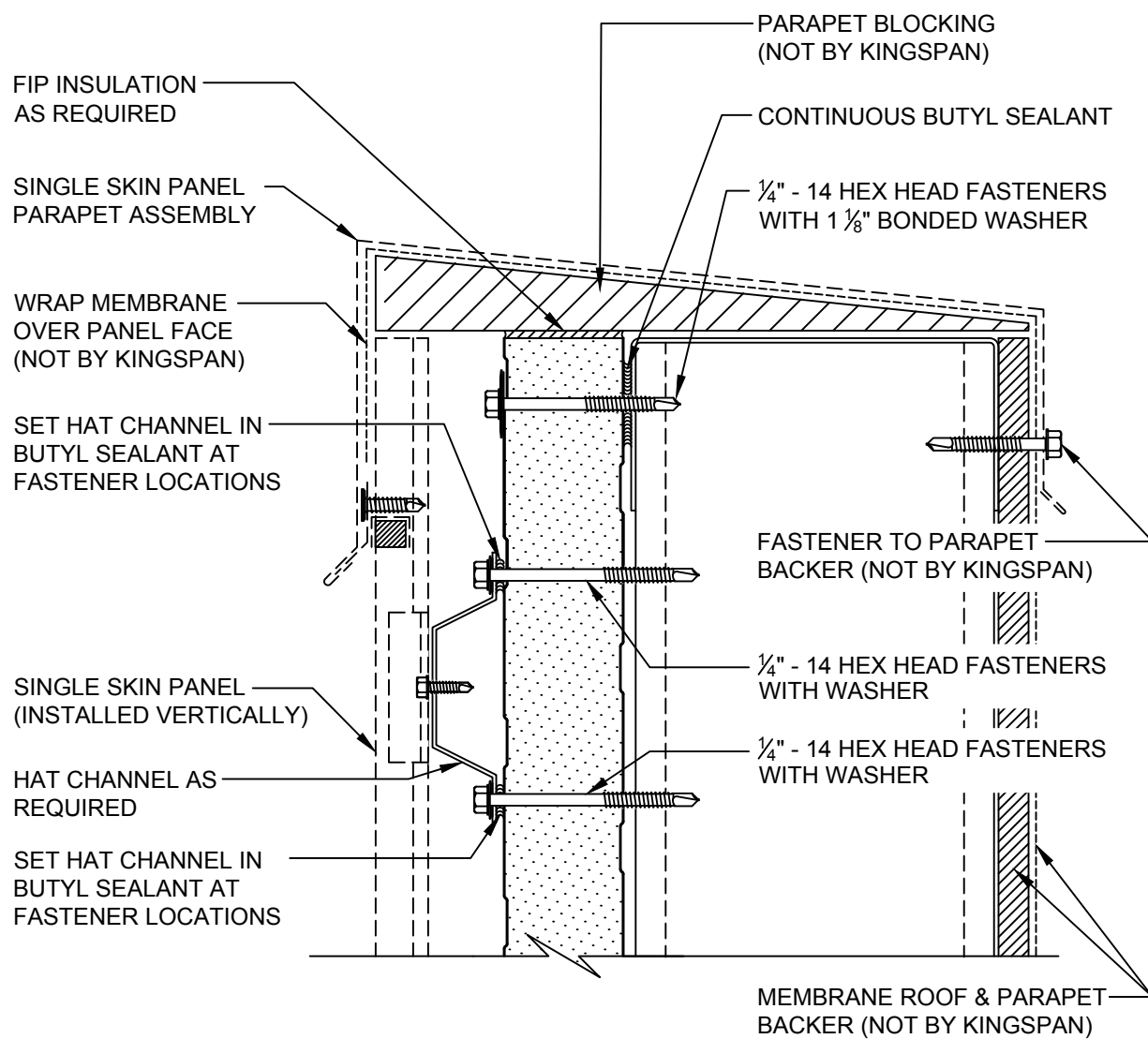
DETAIL #: KPH-FO-04-MTLV

DATE: 2019



www.kingspanpanels.us
www.kingspanpanels.ca

HORIZONTAL KARRIER™ PANEL - VERTICAL METAL FACADE



NOTE:
FOR PROJECTS REQUIRING NFPA 285:
INTERIOR SIDE OF FRAMING MUST
HAVE 5/8" THICK FIRE BLOCK TYPE X
GYPSUM BOARD (NOT BY KINGSPAN)

PARAPET DETAIL

DETAIL #: KPH-PR-01-MTLV

DATE: 2019



www.kingspanpanels.us
www.kingspanpanels.ca

HORIZONTAL KARRIER™ PANEL - VERTICAL METAL FACADE

REFER TO 900/1000 SERIES
ROOF PANEL DETAILS FOR
ADDITIONAL INFORMATION

FIP INSULATION
AS REQUIRED

SET HAT CHANNEL IN
BUTYL SEALANT AT
FASTENER LOCATIONS

SINGLE SKIN PANEL
(INSTALLED VERTICALLY)

HAT CHANNEL AS
REQUIRED

SET HAT CHANNEL IN
BUTYL SEALANT AT
FASTENER LOCATIONS

1/4" - 14 HEX HEAD FASTENERS
WITH 1 1/8" BONDED WASHER

CONTINUOUS BUTYL SEALANT

1/4" - 14 HEX HEAD FASTENERS
WITH WASHER

1/4" - 14 HEX HEAD FASTENERS
WITH WASHER

EAVE STRUT
(NOT BY KINGSPAN)

NOTE:
FOR PROJECTS REQUIRING NFPA 285:
INTERIOR SIDE OF FRAMING MUST
HAVE 5/8" THICK FIRE BLOCK TYPE X
GYPSUM BOARD (NOT BY KINGSPAN)

LOW EAVE DETAIL

DETAIL #: KPH-LE-01-MTLV

DATE: 2019


Kingspan
Insulated Panels

www.kingspanpanels.us
www.kingspanpanels.ca

HORIZONTAL KARRIER™ PANEL - VERTICAL METAL FACADE

REFER TO 900/1000 SERIES
ROOF PANEL DETAILS FOR
ADDITIONAL INFORMATION

RAKE ANGLE
(NOT BY KINGSPAN)

FIP INSULATION
AS REQUIRED

SET HAT CHANNEL IN
BUTYL SEALANT AT
FASTENER LOCATIONS

SINGLE SKIN PANEL
(INSTALLED VERTICALLY)

HAT CHANNEL AS
REQUIRED

SET HAT CHANNEL IN
BUTYL SEALANT AT
FASTENER LOCATIONS

1/4" - 14 HEX HEAD FASTENERS
WITH 1 1/8" BONDED WASHER

CONTINUOUS BUTYL SEALANT

1/4" - 14 HEX HEAD FASTENERS
WITH WASHER

1/4" - 14 HEX HEAD FASTENERS
WITH WASHER

NOTE:
FOR PROJECTS REQUIRING NFPA 285:
INTERIOR SIDE OF FRAMING MUST
HAVE 5/8" THICK FIRE BLOCK TYPE X
GYPSUM BOARD (NOT BY KINGSPAN)

RAKE DETAIL

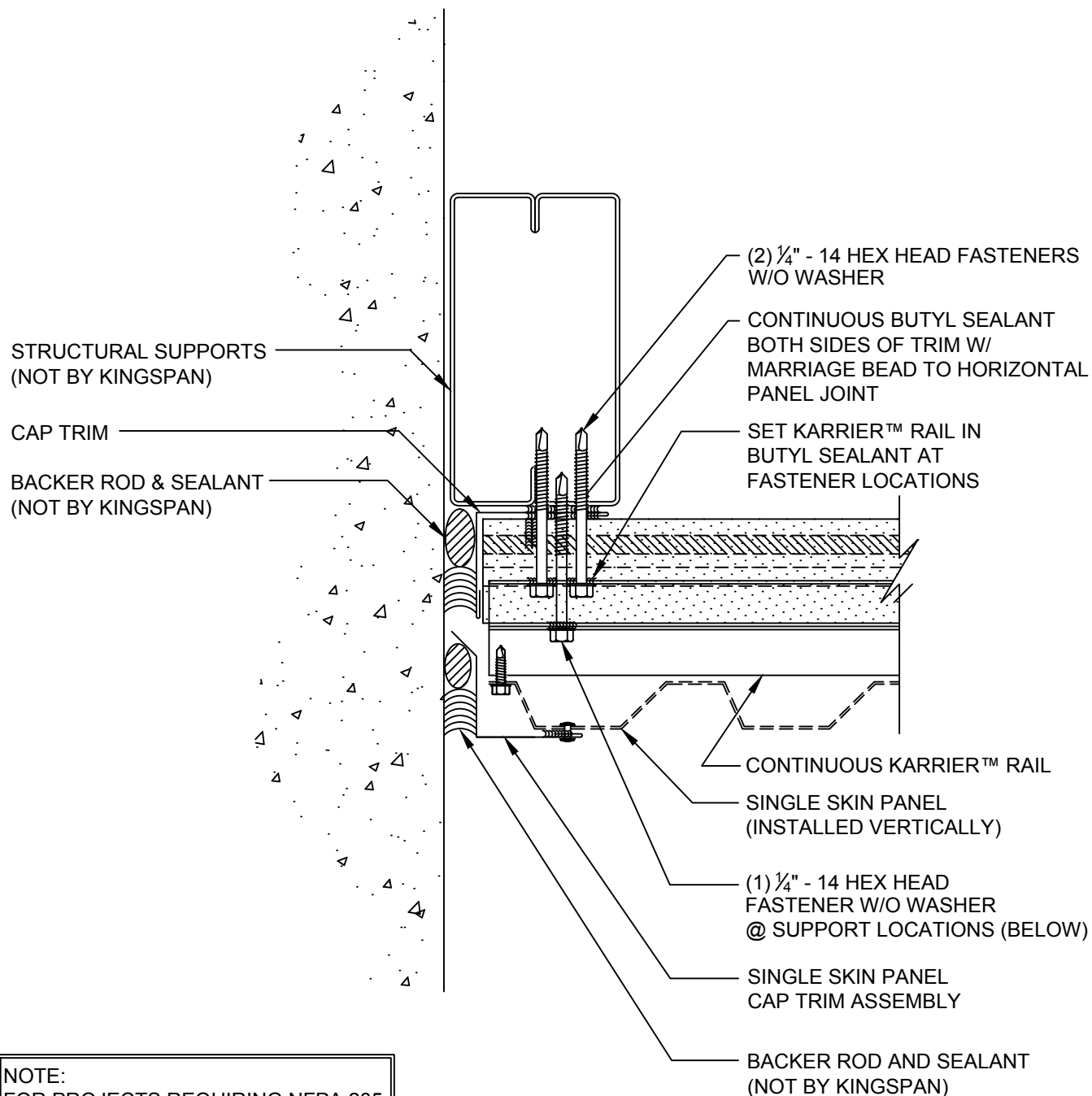
DETAIL #: KPH-RD-01-MTLV

DATE: 2019


Kingspan
Insulated Panels

www.kingspanpanels.us
www.kingspanpanels.ca

HORIZONTAL KARRIER™ PANEL - VERTICAL METAL FACADE



NOTE:
FOR PROJECTS REQUIRING NFPA 285:
INTERIOR SIDE OF FRAMING MUST
HAVE 5/8" THICK FIRE BLOCK TYPE X
GYPSUM BOARD (NOT BY KINGSPAN)

PANEL TERMINATION (HIGH CELL)

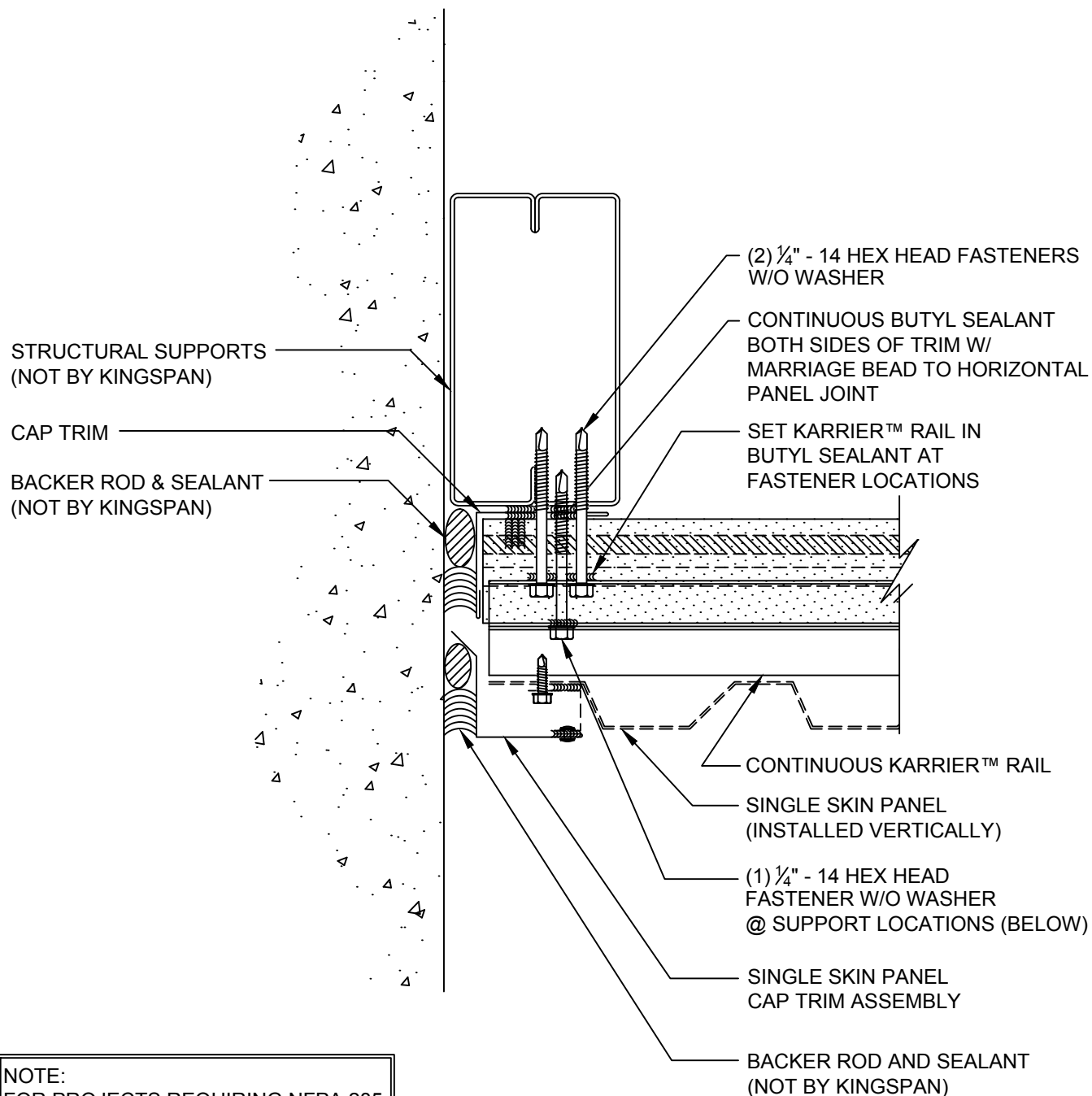
DETAIL #: KPH-TP-01-MTLV

DATE: 2019



www.kingspanpanels.us
www.kingspanpanels.ca

HORIZONTAL KARRIER™ PANEL - VERTICAL METAL FACADE



PANEL TERMINATION (LOW CELL)

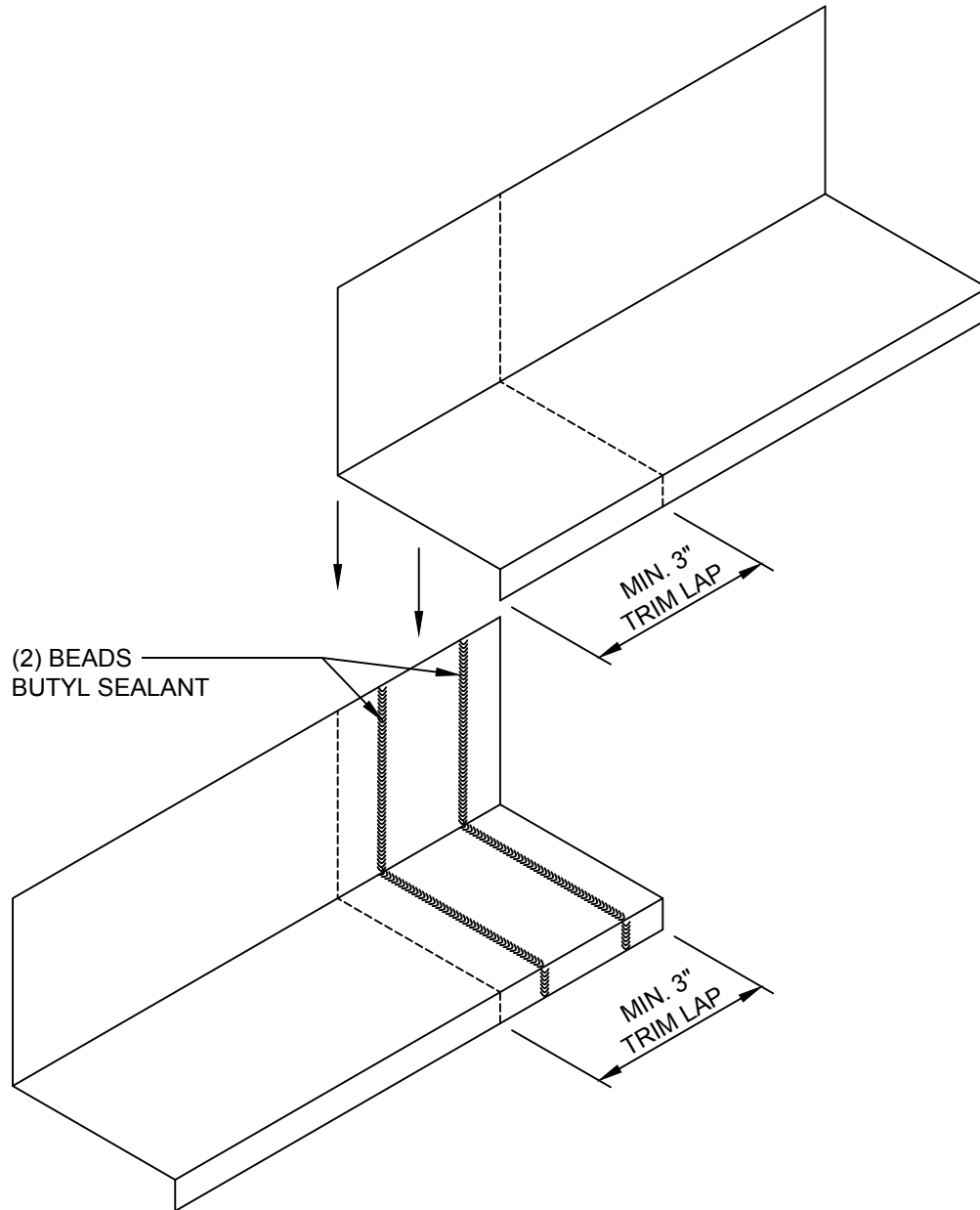
DETAIL #: KPH-TP-02-MTLV

DATE: 2019



www.kingspanpanels.us
www.kingspanpanels.ca

HORIZONTAL KARRIER™ PANEL - VERTICAL METAL FACADE



TRIM END LAP

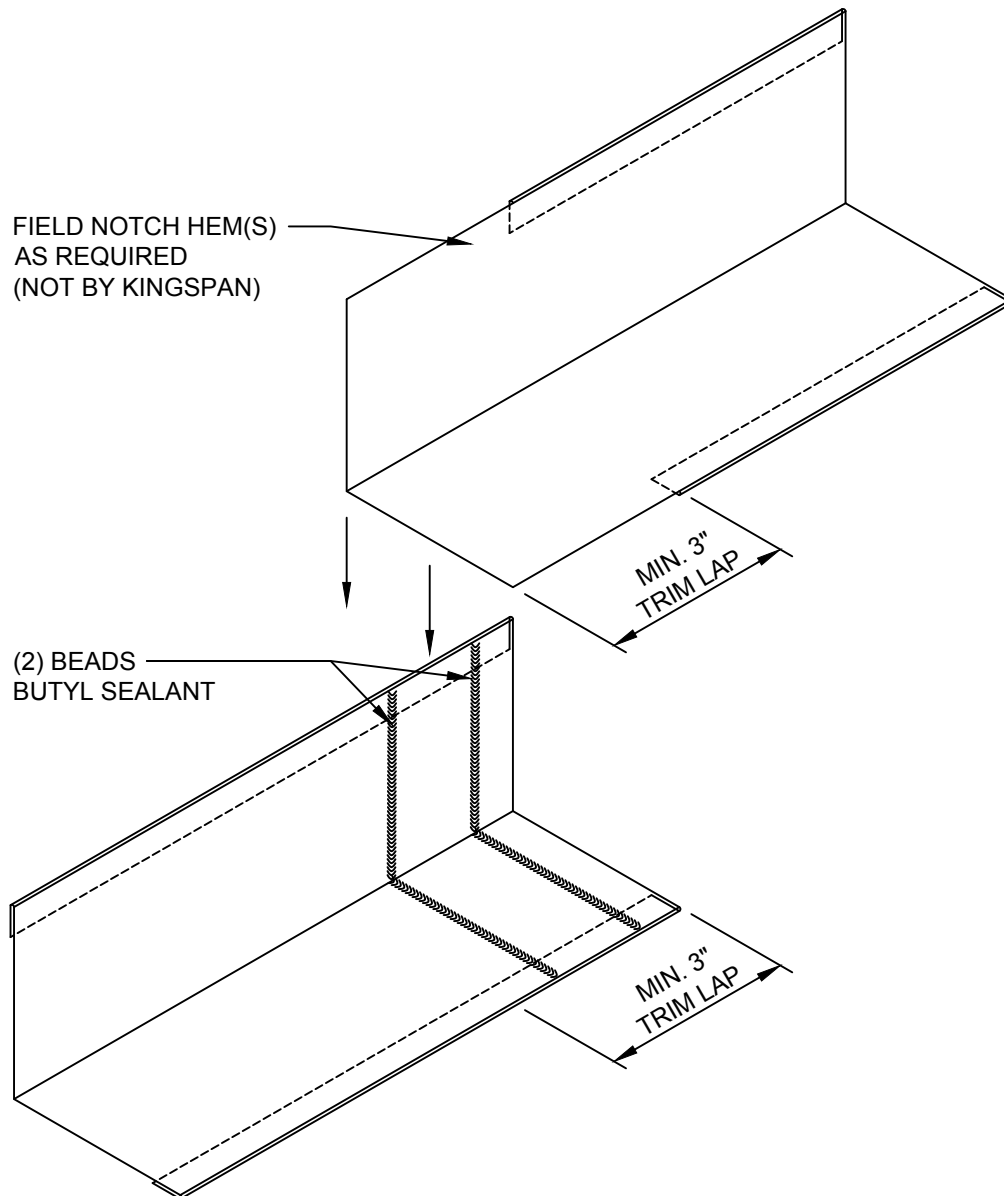
DETAIL #: KPH-TL-01-MTLV

DATE: 2019

Kingspan
Insulated Panels

www.kingspanpanels.us
www.kingspanpanels.ca

HORIZONTAL KARRIER™ PANEL - VERTICAL METAL FACADE



TRIM END LAP
WITH HEMS

DETAIL #: KPH-TL-02-MTLV

DATE: 2019



www.kingspanpanels.us
www.kingspanpanels.ca