

Pace and Performance with Kingspan

Location
Salem, Massachusetts , USA

Wall Products
KarrierPanel
Optimo

Finishes
Custom Metallic

Rainscreen Façade
Morin Single Skin Wall Panels

Salem State
University

Greene Complex
Marcel E. & Marilyn J. Gassett
Fitness & Recreation Center

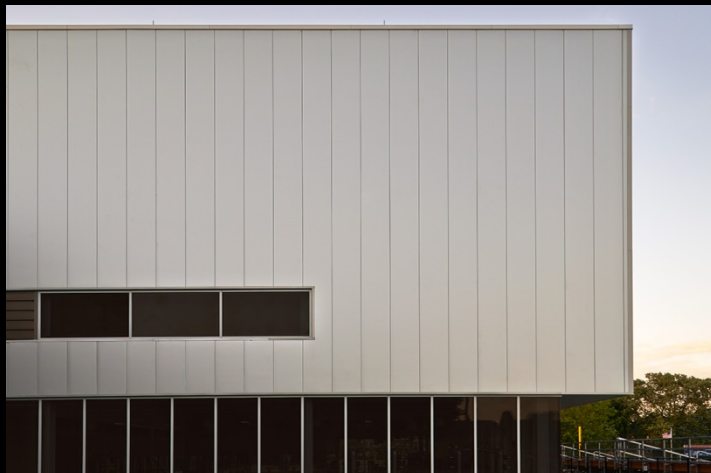
Overview

The Gassett Fitness and Recreation Center added 40,000 square feet of space to the O'Keefe Sports Complex at Salem State University (SSU), and now provides top tier exercise equipment, locker rooms, studios, and two recreational basketball/volleyball courts for SSU's 10,000 students, faculty, and staff.

The University needed to get its new fitness and recreation center enclosed before the approaching winter began. To reach the goals, Kingspan's KarrierPanel Barrier Wall System was specified to construct the exterior envelope of the building. Kingspan KarrierPanel and KarrierRail are recognized as one of the best enclosure options available today.



Wall Products
KarrierPanel
Optimo



On Track for the Fast Track

Business Challenge:

To maintain the fast track critical path of construction, the facility had to be enclosed within eight to ten weeks. It was also required that the new facility would be state-of-the-art in terms of energy efficiency.

Kingspan Solution:

Kingspan's KarrierPanel was specified for this project. This ensures that construction of a building envelope is not impeded by UV degradation, temperature fluctuations, or inclement weather. It combines the thermal benefits of lightweight insulated metal panels with the pleasing aesthetics of multiple facade styles.

KarrierRail, designed by Kingspan, was also used. This is a stable and secure structural rail on which many types of cladding can be hung.



Staying Ahead of the Game

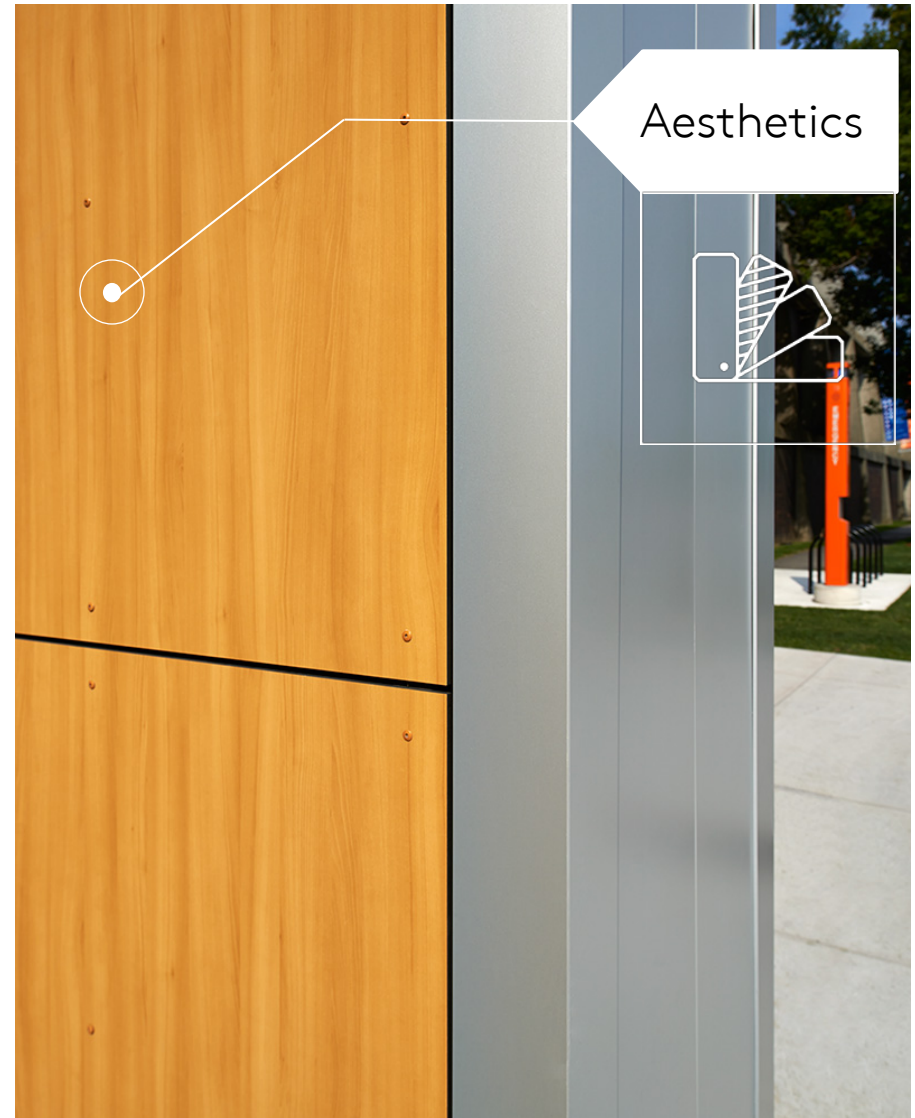
Architectural Benefits:

The project architect, DiMella Shaffer, of Boston, Massachusetts, took a rather plain structure and, with Kingspan products, made it quite elegant. The architect's vision included insulated metal panels (IMPs) produced with a textured surface in custom colors developed from the PPG color pallet. Kingspan took those specifications and precisely matched them using its Sterling Silver Optimo polyiso core IMP with Urban Gold soffits.

Another reason given by DiMella Shaffer for specifying KarrierPanel was how Kingspan excels in having engineers available for support with a quick turnaround on information requests.

Contractor Benefits:

Speed of build and immediate weathertight enclosure are two more advantages from using the Kingspan KarrierPanel system. It offers unlimited possibilities for rainscreen cladding installed as a screening outboard of the enclosure panel system.



In the Home Straight

Installation Benefits:

Sunrise Erectors, based in Canton, Massachusetts performed the installation of the Kingspan KarrierPanel System. "What that adds to the construction process you can only imagine," said John Erickson, project manager for Sunrise Erectors. "KarrierPanel provided a waterproof vapor barrier wall structure, and insulation in a single-piece application."

"By using Kingspan Morin panel on top of the KarrierPanel system, the thermal performance of the Gassett Fitness and Recreation Center is substantially better when compared to other available wall assembly systems."

Owner Benefits:

One final and decisive factor for specifying KarrierPanel by Kingspan for the building was that these IMP wall elements last as long as the service life of a standard commercial building and offer multiple end-of-life reuse options.



Contact

For more information on
the products used in this
project, please email

Info.NA@kingspanpanels.com

