

Insulated Panel Systems  
North America

# Product Portfolio

## Systems and Solutions Guide

Wall Panels / Roof Panels / Accessories



POWERED BY  
**QuadCore**<sup>®</sup>  
TECHNOLOGY

  
**Kingspan**<sup>®</sup>

# Contents



## 01

### Kingspan

Your Global Partner	4
QuadCore® Technology	6
Products at a Glance	8
Performance Benefits	14
Life Cycle Assessment & VOC Testing	18

## 02

### Wall Panel Systems

KS Series Azteco™	20
KS Series Shadowline	21
KS Series Mini Micro-Rib	22
KS Series Micro-Rib	23
KS Series Mini-Wave	24
KS Series Granitstone®	25
Optimo®	26
KarrierPanel®	28

## 03

### Roof Panel Systems

KingRib® 3 / KingRib® 5	32
KingSeam®	33





## 04

### Extrusions & Services

Aluminum Extrusions	34
Testing and Services	35
Color Coatings	36
Projects	38
Integrated Systems	42

Together we have the opportunity to make our built environments more energy efficient, attractive, adaptable, environmentally sensitive and productive. The way we build can be more effective and reach higher standards than ever before.

We can make our buildings really work for us; consuming and generating energy smartly to become real investments in our future."

Gene M. Murtagh, CEO, Kingspan Group.

Higher Building Performance  
with Kingspan

# It's all in the gray cells

QuadCore® Technology is Kingspan's next generation of self-blended hybrid insulation core. Across the world of insulated panels, this innovation with its distinctive gray microcells powers the industry's highest combined performance:

- Unrivaled thermal efficiency
- Superior fire protection
- Unmatched health & wellness certification
- 30-year thermal warranty

QuadCore® Technology, together with our end-to-end services and whole building design know-how, takes Kingspan buildings to a higher level of lifetime performance, and delivers the ultimate protection for our partners, their buildings, and the environment for future generations.

360°  
Services

Whole  
Building  
Design

Warranty

POWERED BY  
**QuadCore®**  
TECHNOLOGY



1

## Unrivaled Thermal Efficiency

QuadCore® Technology is certified as one of the most thermally efficient closed-cell insulation core on the market.

### Lifetime performance and value benefits

- The class-leading R-value of R-8.0 per inch has the potential to reduce HVAC size, and lower both energy consumption and carbon emissions.
- QuadCore® Technology is a more streamlined solution relative to other insulation materials with associated benefits in interior space optimization, for specific transport, and ease of handling during construction.

2

## Superior Fire Protection

The hybrid nature of QuadCore® Technology delivers a range of improvements in fire performance which surpass all other insulated panel systems incorporating closed-cell insulation materials.

### Lifetime performance and value benefits

- For any building owner that wants the best protection against the impact of fire, the unique low smoke characteristics of QuadCore® Technology provide the optimum solution.
- QuadCore® Technology also delivers improved fire resistance ratings leading to more cost-effective installations due to economies in steelwork and fixing, in certain applications.

3

## Unmatched Health & Wellness Certification

The improved thermal performance of QuadCore® Technology helps to optimize resource efficiency. It is also CFC, HCFC, HFC free and has a very low Global Warming potential.

### Lifetime performance and value benefits

- C2C Certified Material Health Certificate™ Silver
- GREENGUARD Gold certified



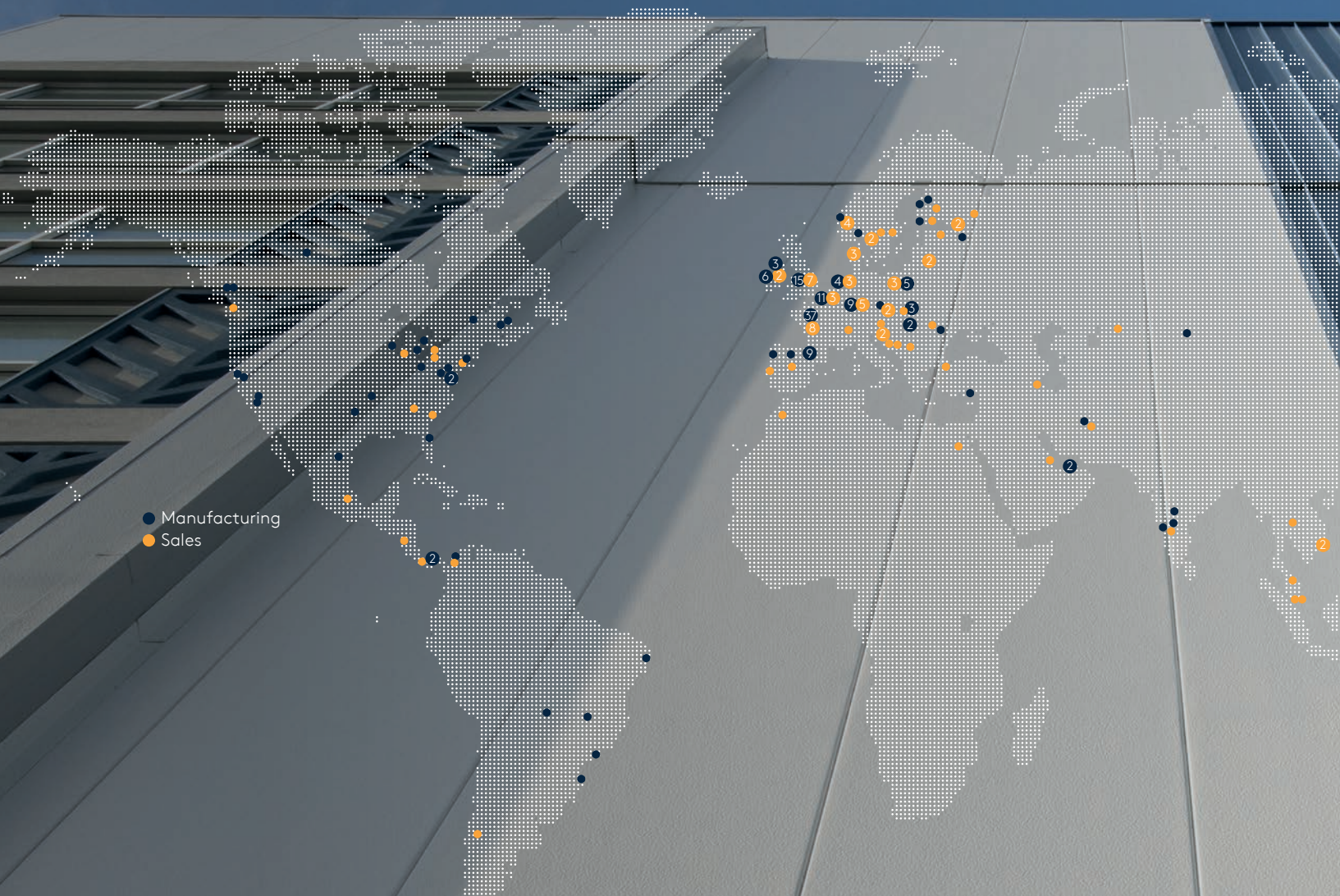
C2C Certified Material Health Certificate™ is a trademark of the Cradle to Cradle Products Innovation Institute.

4

## 30-year Thermal Warranty

The inimitable science behind QuadCore® Technology and comprehensive independent third-party testing has delivered the industry an unparalleled 30-year thermal performance warranty.

# Your Global Partner



---

Kingspan Insulated Panels is a global leader in the design, development and delivery of advanced building envelope products and solutions.

At Kingspan Insulated Panels, we are pioneering better technologies and methods of building for a low carbon world. Improving building performance, construction methods and ultimately people's lives – that's what drives our people across the world. Energy efficiency is at the heart of our innovation, from making the industry's most thermally efficient core for our insulated panels, to producing the most airtight interfaces, to providing technical and field-service support on how to build optimally.



## How we operate

190+

Global manufacturing facilities

19,000+

Employees

- Management controls
- Quality systems
- Responsible supply chain partnerships

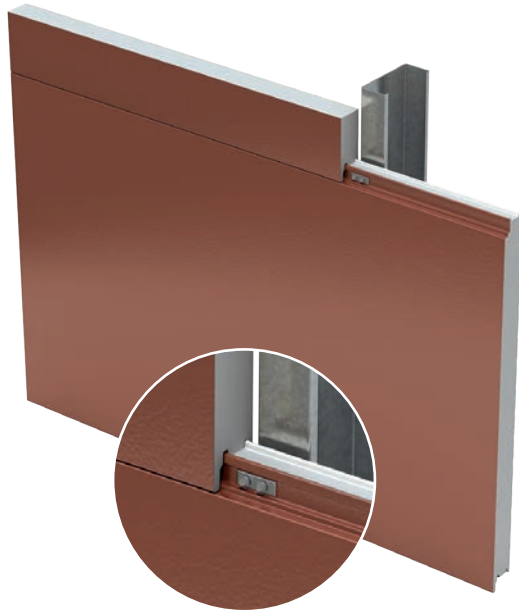
As the world demands more from buildings in terms of energy efficiency, fire safety, weather resilience, health and aesthetics, we have expanded beyond insulated panels in recent years to encompass high-end facades, daylighting and ventilation systems, integrated PV and structural steel solutions.

Together with the learnings from our ongoing research into better building design, these enhanced Kingspan envelopes will take our built environment to the next era of efficiency and wellbeing.

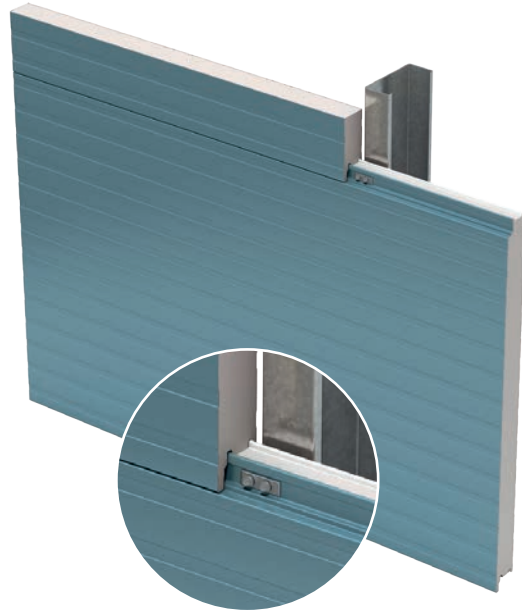
# Products at a Glance

---

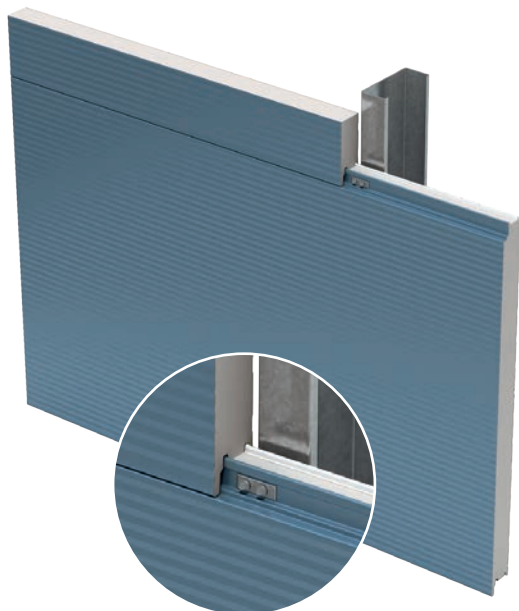
## Wall – Vertical and Horizontal Application



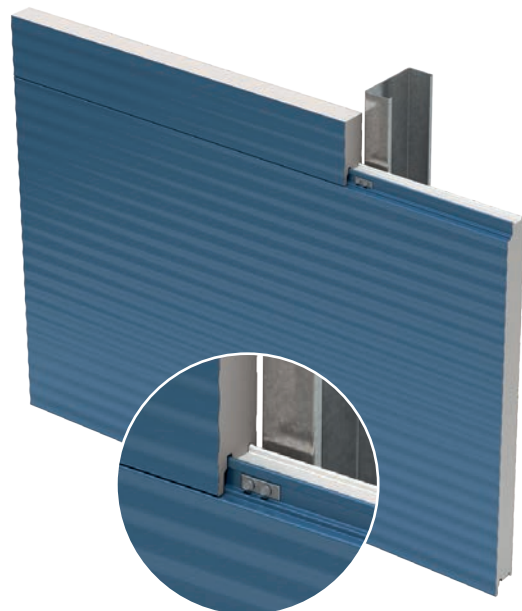
KS Azteco™



KS Shadowline

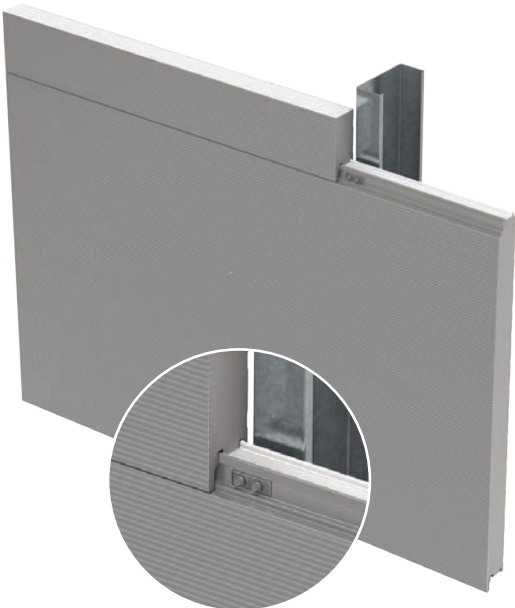


KS Micro-Rib

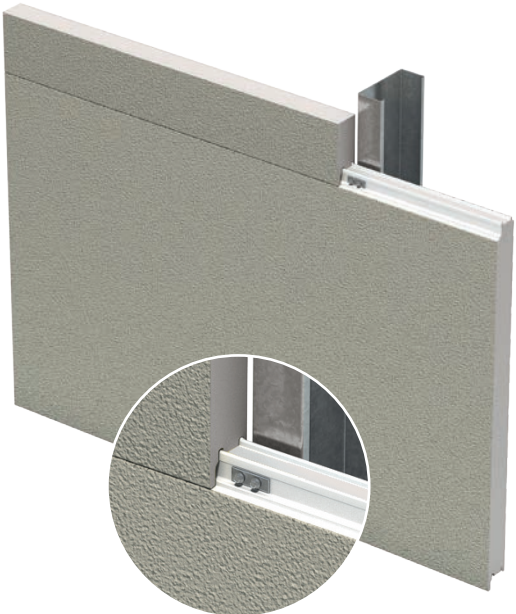


KS Mini-Wave





KS Mini Micro-Rib



KS Granitstone®

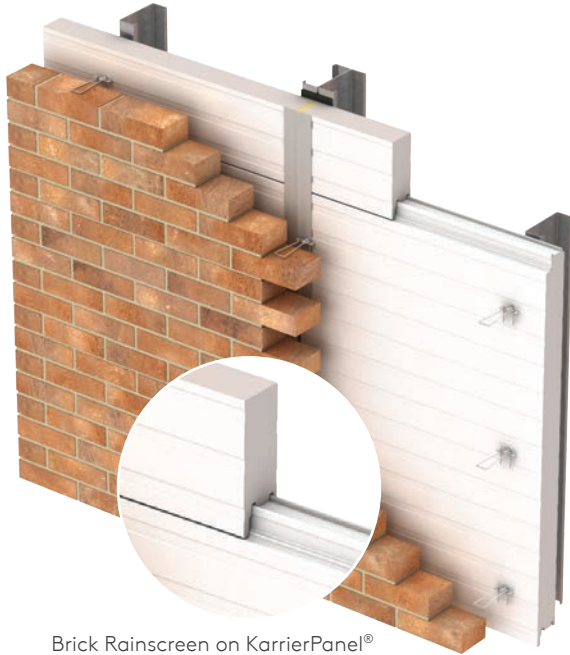


Optimo®

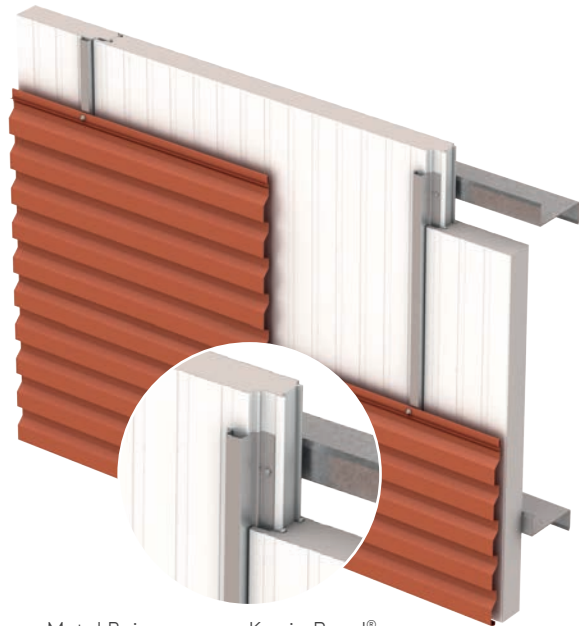
# Products at a Glance

---

## Wall with Facade



Brick Rainscreen on KarrierPanel®

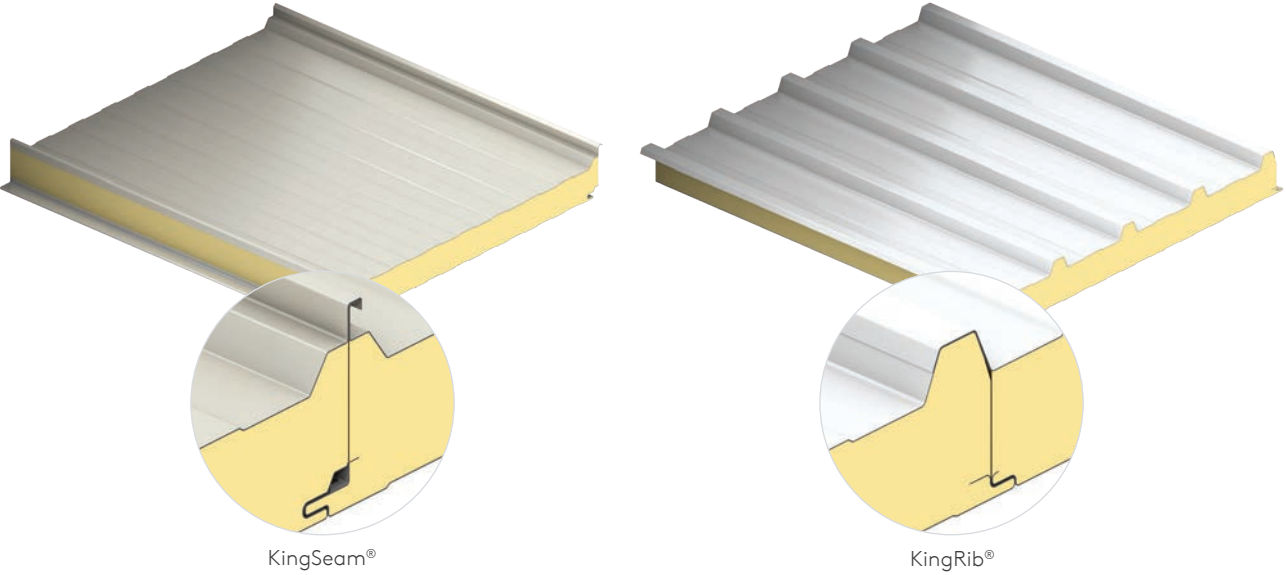


Metal Rainscreen on KarrierPanel®





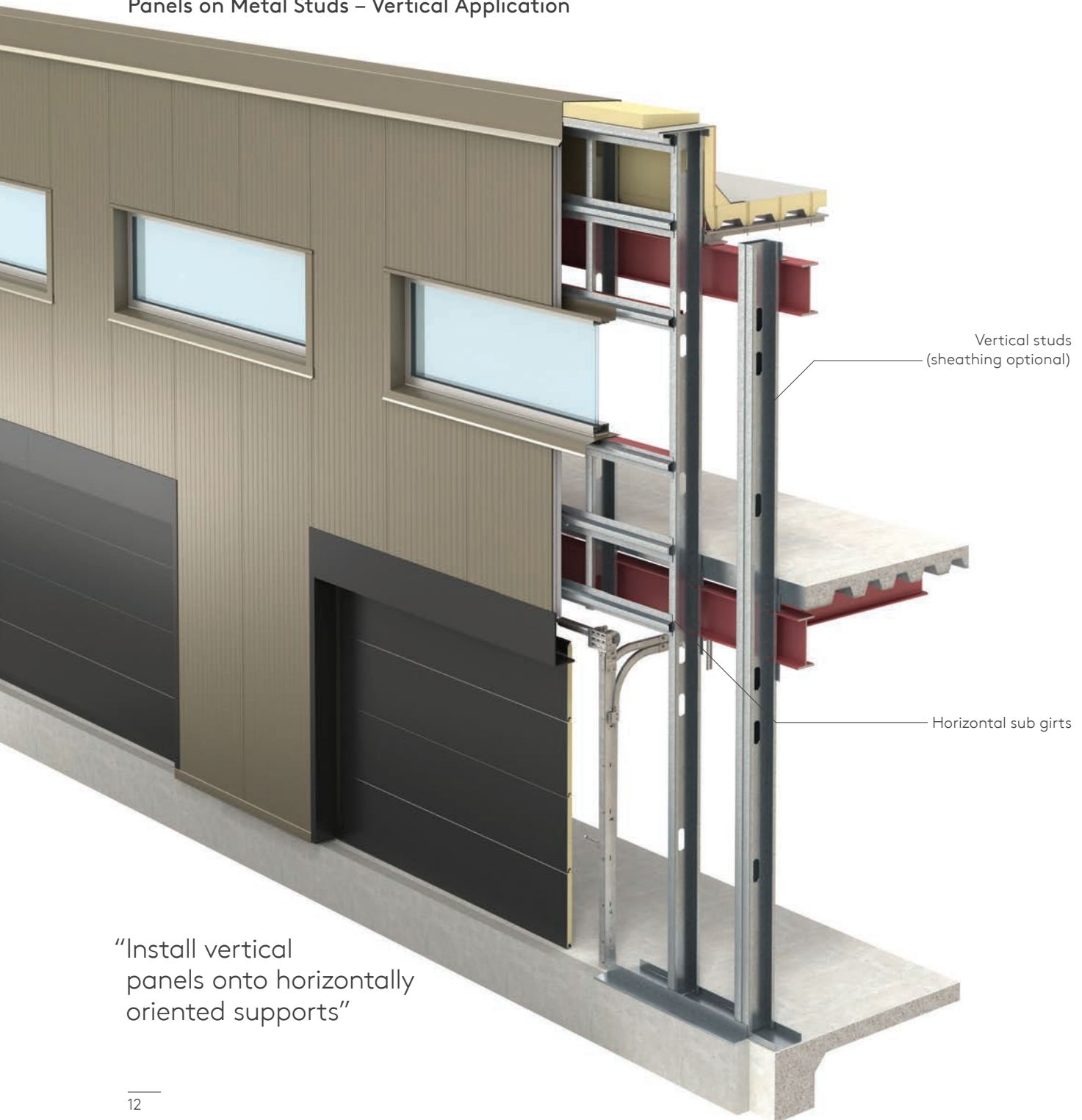
Roof



# Products at a Glance

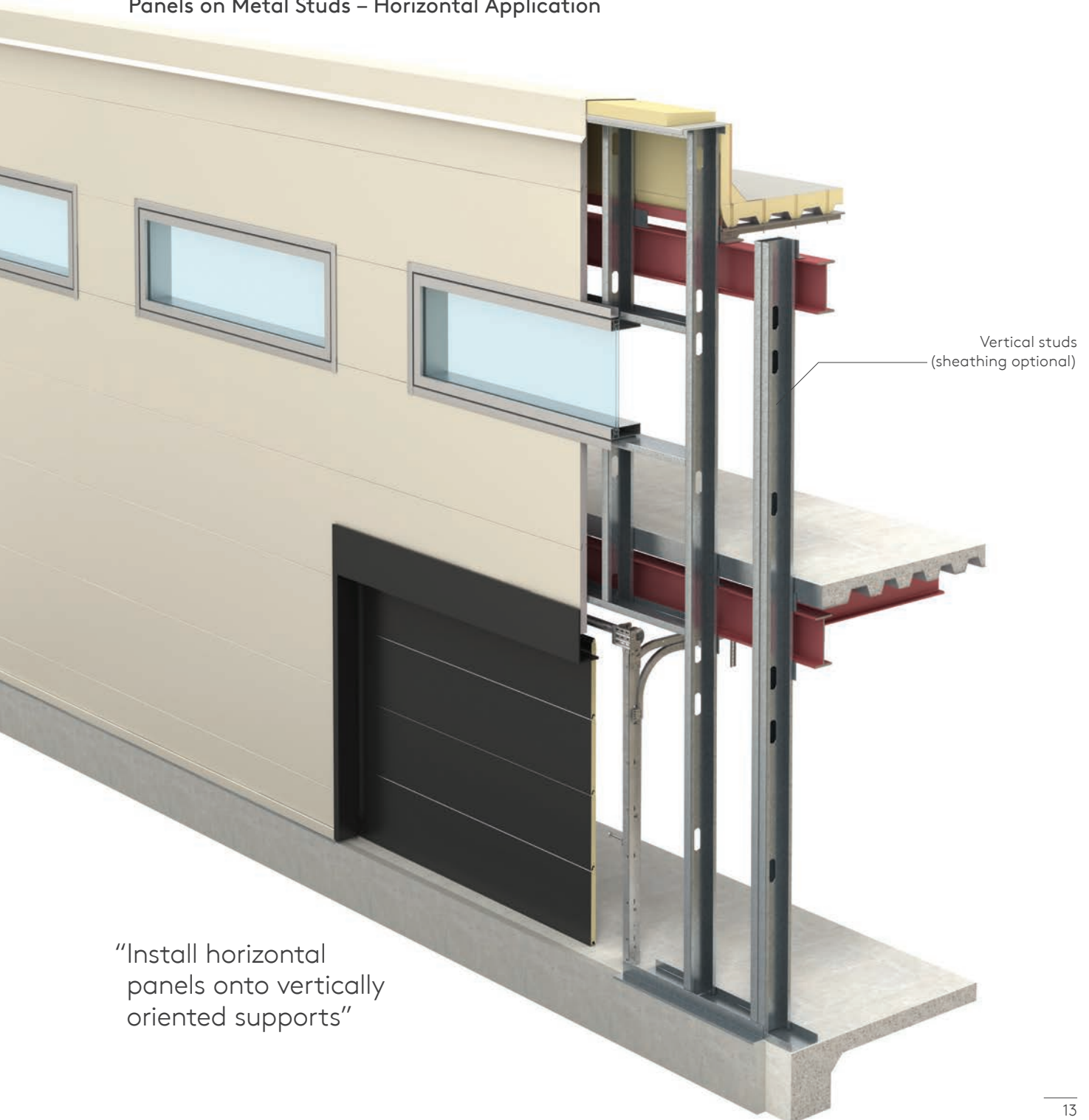
---

## Panels on Metal Studs – Vertical Application





## Panels on Metal Studs – Horizontal Application



# Performance Benefits

## Build Speed

### Wall Assembly Installation

Water, air, vapor and thermal control layers all in one system creating the ideal barrier wall installed efficiently by one contractor

Standard built up wall system involving multiple product and trades to install

Wall Assembly with Interior Finish	Number of Components
Insulated Metal Panels	3
Single Skin Metal (Rainscreen)	7-8
Aluminum Composite Metal (Rainscreen)	6
Exterior Insulated Finish System (EIFS)	11
Masonry Veneer	7
Tilt-Up Concrete / Pre-Cast	3-6





## Case Study

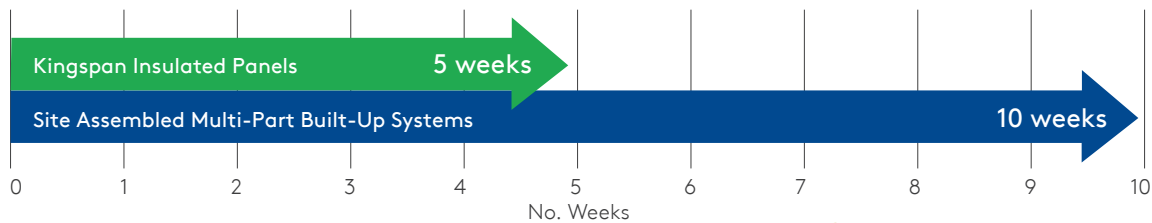
Consultants for a large retail chain estimate construction schedule time savings of up to five weeks were achieved in a multiple unit construction program with insulated metal panels.

An average retail store with profits of \$35,000 a week can potentially save \$175,000 profit in this time as the building is open for business and revenue is generated.

### Construction Schedule



Area – 100,000ft<sup>2</sup>

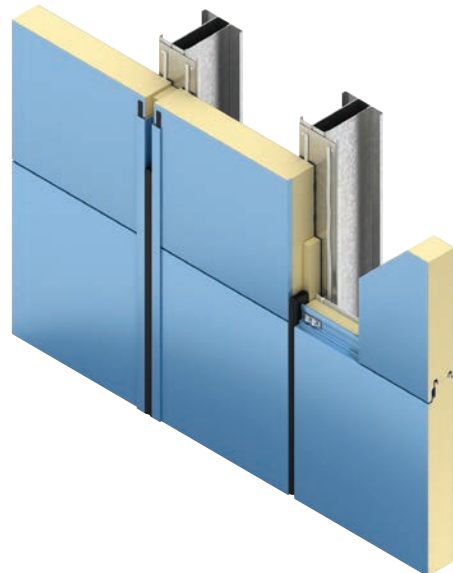


## Design Flexibility and Aesthetic Appeal

Kingspan's insulated roof and wall panels offer designers a comprehensive range of building solutions for vertical and horizontal wall applications.

Available in multiple profiles, finishes and color options, trimless ends and cover widths, insulated panels provide customized building design and creative freedom.

The panels are easily integrated with traditional construction methods and building systems.



# Performance Benefits

## Thermal Performance

Kingspan insulated wall systems offer superior R-values with unparalleled thermal performance during service life, all built-in to a single off-site, factory assembled insulated panel.

### High R-Value

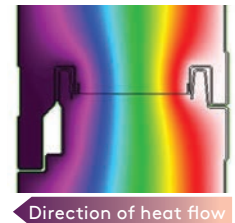
Kingspan insulated panels' insulating cores provide superior thermal performance with tested R-values of 7.2\* per inch. Most importantly, the insulation is on the exterior of the building structure to provide the best possible thermal envelope by reducing thermal bridging typical of cavity wall systems. In addition, the panels feature excellent foam-to-foam contact, which provides an unbroken thermal shield against heat transfer.

\*QuadCore® approx. R-8/in at 75F mean per C518.

### Superior Airtightness and Weathertightness

One of the biggest sources of building heat loss (or heat gain) is air leakage i.e. – “leaky buildings”. Kingspan panels are rigorously tested to ensure that they remain both airtight and weathertight over the life of a building.

Kingspan Shadowline Insulated Metal Wall Panel









# Life Cycle Assessment (LCA)

## UL Certified EPD



### What is an LCA?

Life-cycle assessment (LCA, also known as life-cycle analysis and cradle-to-grave analysis) is a technique to assess environmental impacts associated with all the stages of a product's life from raw material extraction through materials processing, manufacture, distribution, use, repair and maintenance, and disposal or recycling.

### What is an EPD?

An Environmental Product Declaration (EPD) is a comprehensive, internationally-harmonized report that documents the ways in which a product, throughout its lifecycle, affects the environment.

### What's the relationship between an LCA and an EPD?

An Environmental Product Declaration (EPD) is a summary of the data collected in the Life Cycle Assessment (LCA).

### Does Kingspan have EPDs?

Yes, Kingspan Insulated Panels North America created the first of its kind cradle-to-grave UL-Certified ISO-compliant EPD in September of 2011. Since that time Kingspan has issued multiple revisions to document our journey of continuous improvement.

### What's the purpose of an EPD?

An EPD tells the life cycle story of a product in a single, written report, focusing on information about a product's environmental impacts, such as global warming potential, smog creation, ozone depletion, and water pollution. An EPD can also include other product impacts such as land use changes, potential toxicity risks, as well as corporate environmental initiatives that are of particular interest to the discloser.

### Is an EPD a rating?

No, EPDs do not rank products, and the existence of an EPD for a product does not indicate that environmental performance criteria have been met. EPDs are simply a disclosure tool that helps purchasers better understand a product's sustainable qualities and environmental repercussions so they can make more informed product selections.

Kingspan has EPDs which are third-party certified by UL. These are part of our greater effort for transparency and sustainability.

# VOC Testing

## UL GREENGUARD Gold



### What is GREENGUARD Gold certification?

Simply put, GREENGUARD Certification ensures that a product has met some of the world's most rigorous and comprehensive standards for low emissions of volatile organic compounds (VOCs) into indoor air. The program screens over 360 VOCs and total chemical emissions plus ensures compliance with California's CDPH Standard Method Section 01350.

### Why is it important?

Because it's an independent third-party certification that tells architects and building professionals that the product has been tested and certified for VOCs. It also helps provide confidence in an increasingly "green washed" marketplace.

### Does Kingspan have GREENGUARD Gold?

Yes, Kingspan is the only metal panel manufacturer in North America to deliver GREENGUARD or GREENGUARD Gold Certified products. We have GREENGUARD Gold Certification across all current PIR foam core product sets.

### Does GREENGUARD Gold help with certifications?

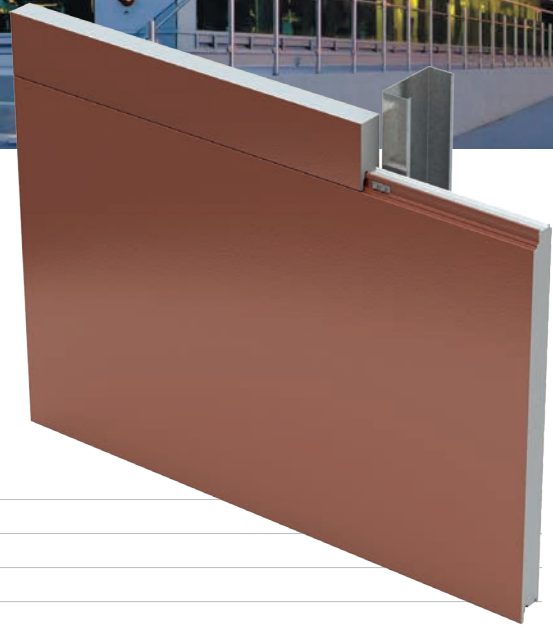
GREENGUARD Certification criteria have been the basis for the LEED credit for low emitting materials since 2002. It allows products to be used in projects where building occupants are a key concern, such as schools, offices and hospitals.

Kingspan has always believed in leading the industry in innovation and third-party certification. Pursuing the GREENGUARD stamp has been an initiative to show that we can provide products that are good for not just the built environment, but also the human environment.

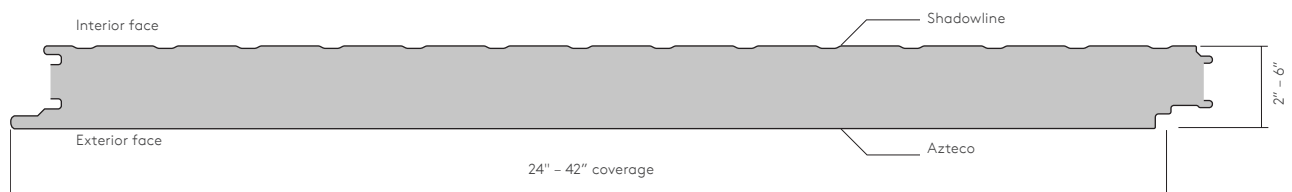
# KS Azteco™



KS Azteco™ insulated metal panels are a pre-engineered wall system that delivers an attractive and affordable panel choice. KS Azteco™ panels, horizontally or vertically applied, use a patented double seal integrated joint. Standard reveals are  $\frac{1}{8}$ " for vertical applications, and  $\frac{3}{8}$ " for horizontal applications.



Insulation Core:	QuadCore® Technology or PIR
Profile:	Exterior: Flat / Interior: Shadowline
Embossing:	Exterior: Azteco™ / Interior: Stucco or non-embossed
Gauge:	Exterior: 26, 24, 22 / Interior: 26, 24, 22 ga
Width:	24", 30", 36", 42"
Thickness:	2", 2.5", 3", 4", 5", 6"
Length:	8' – 53'
Reveal option:	Vertical: $\frac{1}{8}$ " / Horizontal: $\frac{1}{8}$ " or $\frac{3}{8}$ "
Orientation:	Vertical or horizontal
Post fabrication (optional):	Trimless ends (Manufacturing limitations apply. Please contact us for detailed information.)
R-value:	QuadCore® Technology: $\approx 8$ per inch per ASTM C518 @ 75°F mean temperature / $\approx 9$ per inch per ASTM C518 @ 35°F mean temperature PIR: $\approx 7.2$ per inch per ASTM C518 @ 75°F mean temperature / $\approx 8.25$ per inch per ASTM C518 @ 35°F mean temperature

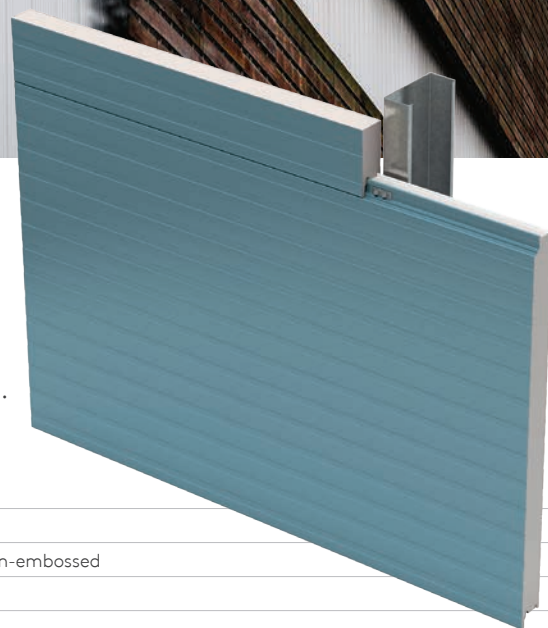




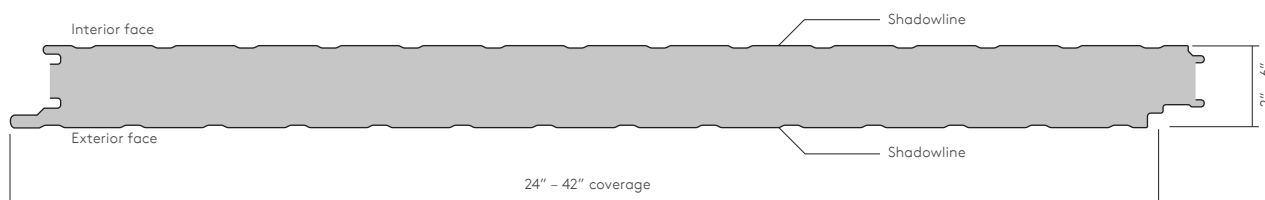
# KS Shadowline

KS Shadowline wall systems provide an aesthetically pleasing and economic panel choice. KS Shadowline panels, applied vertically, provide a clean, flat appearance that gives your building the modern finish desired.

KS Shadowline panels are ideal for new and retrofit applications across commercial and industrial market sectors.



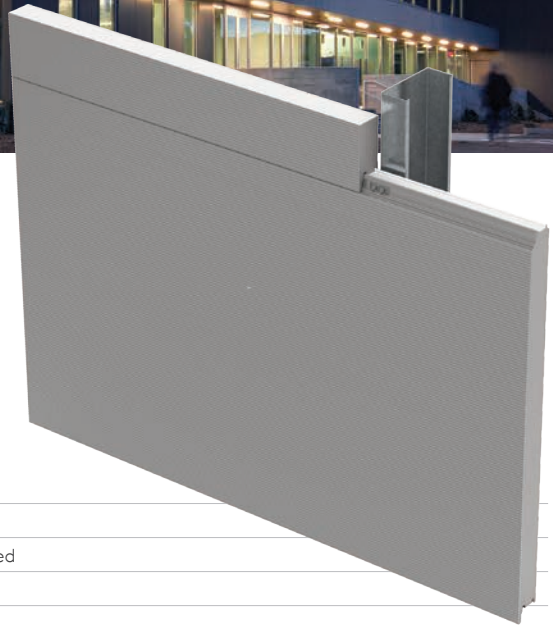
Insulation Core:	QuadCore® Technology or PIR
Profile:	Exterior: Shadowline / Interior: Shadowline
Embossing:	Exterior: Stucco or non-embossed / Interior: Stucco or non-embossed
Gauge:	Exterior: 26, 24, 22 ga / Interior: 26, 24, 22 ga
Width:	24", 30", 36", 42"
Thickness:	2", 2.5", 3", 4", 5", 6"
Length:	8' – 53'
Reveal option:	Vertical: 1/8" / Horizontal: 1/8" or 3/8"
Orientation:	Vertical or horizontal
Post fabrication (optional):	Trimless ends (Manufacturing limitations apply. Please contact us for detailed information.)
R-value:	QuadCore® Technology: $\approx 8$ per inch per ASTM C518 @ 75°F mean temperature / $\approx 9$ per inch per ASTM C518 @ 35°F mean temperature PIR: $\approx 7.2$ per inch per ASTM C518 @ 75°F mean temperature / $\approx 8.25$ per inch per ASTM C518 @ 35°F mean temperature



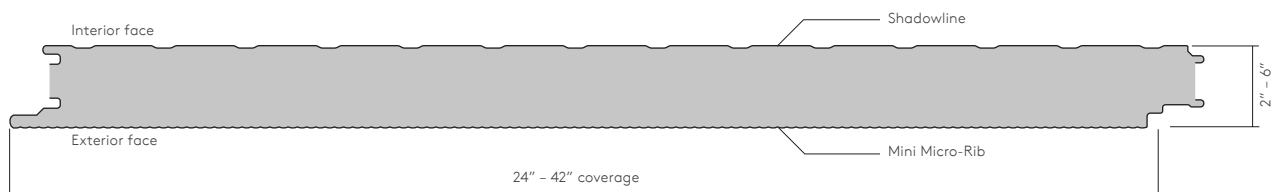
# KS Mini Micro-Rib

Mini Micro-Rib allow for an attractive building exterior providing the appearance of fine lines. Mini Micro-Rib panels, applied vertically, are ideal for new and retrofit applications across a wide range of sectors.

KS Mini Micro-Rib panels provide an outstanding combination of performance benefits with design flexibility.



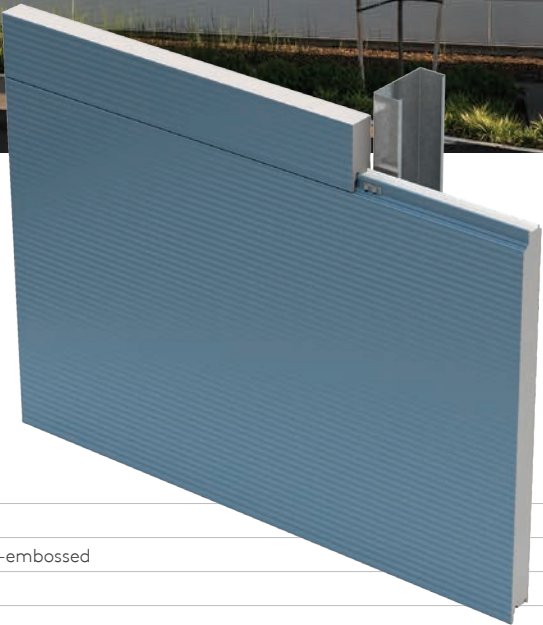
Insulation Core:	QuadCore® Technology or PIR
Profile:	Exterior: Mini Micro-Rib / Interior: Shadowline
Embossing:	Exterior: Non-embossed / Interior: Stucco or non-embossed
Gauge:	Exterior: 24 ga / Interior: 26, 24, 22 ga
Width:	24", 30", 36", 42"
Thickness:	2", 2.5", 3", 4", 5", 6"
Length:	8' – 53'
Reveal option:	Vertical: 1/8" / Horizontal: 1/8" or 3/8"
Orientation:	Vertical or horizontal
Post fabrication (optional):	Trimless ends, folded corners, transverse bends. (Manufacturing limitations apply. Please contact us for detailed information.)
R-value:	QuadCore® Technology: $\approx 8$ per inch per ASTM C518 @ 75°F mean temperature / $\approx 9$ per inch per ASTM C518 @ 35°F mean temperature PIR: $\approx 7.2$ per inch per ASTM C518 @ 75°F mean temperature / $\approx 8.25$ per inch per ASTM C518 @ 35°F mean temperature



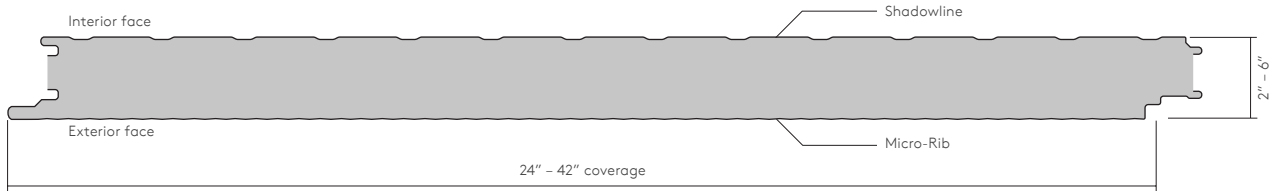


# KS Micro-Rib

The KS Micro-Rib profile creates an aesthetically superior look while also creating shadows due to its linear appearance. They provide an unrivaled combination of aesthetics and performance benefits while remaining an economical option. Applied vertically or horizontally, they can be used across a wide range of sectors and are suited to new construction or retrofits.



Insulation Core:	QuadCore® Technology or PIR
Profile:	Exterior: Micro-Rib / Interior: Shadowline
Embossing:	Exterior: Stucco or non-embossed / Interior: Stucco or non-embossed
Gauge:	Exterior: 24, 22 ga / Interior: 26, 24, 22 ga
Width:	24", 30", 36", 42"
Thickness:	2", 2.5", 3", 4", 5", 6"
Length:	8' – 53'
Reveal option:	Vertical: 1/8" / Horizontal: 1/8" or 3/8"
Orientation:	Vertical or horizontal
Post fabrication (optional):	Trimless ends, folded corners, transverse bends. (Manufacturing limitations apply. Please contact us for detailed information.)
R-value:	QuadCore® Technology: ≈ 8 per inch per ASTM C518 @ 75°F mean temperature / ≈ 9 per inch per ASTM C518 @ 35°F mean temperature PIR: ≈ 7.2 per inch per ASTM C518 @ 75°F mean temperature / ≈ 8.25 per inch per ASTM C518 @ 35°F mean temperature

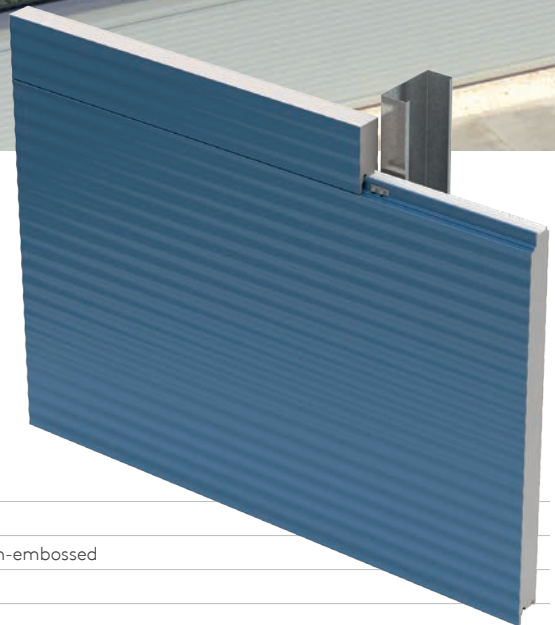




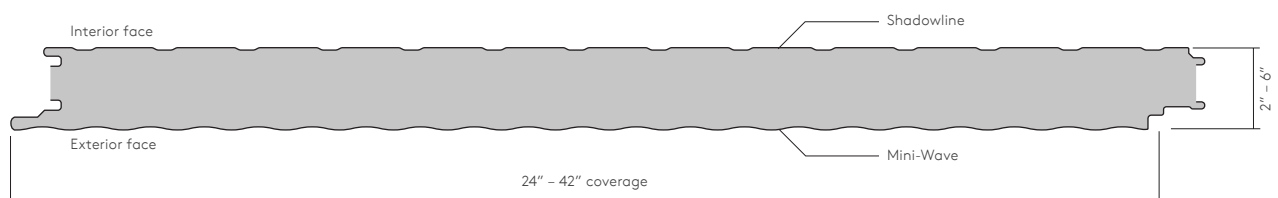
# KS Mini-Wave

Mini-Wave wall system provides a continuous sweeping profile creating a unique wave appearance. Mini-Wave panels, horizontally or vertically applied, use a patented double seal integrated joint.

KS Mini-Wave is ideal for new and retrofit applications across commercial and industrial sectors.



Insulation Core:	QuadCore® Technology or PIR
Profile:	Exterior: Mini-Wave / Interior: Shadowline
Embossing:	Exterior: Stucco or non-embossed / Interior: Stucco or non-embossed
Gauge:	Exterior: 24, 22 ga / Interior: 26, 24, 22 ga
Width:	24", 30", 36", 42"
Thickness:	2", 2.5", 3", 4", 5", 6"
Length:	8' – 53'
Reveal option:	Vertical: 1/8" / Horizontal: 1/8" or 3/8"
Orientation:	Vertical or horizontal
Post fabrication:	N/A
R-value:	QuadCore® Technology: ≈ 8 per inch per ASTM C518 @ 75°F mean temperature / ≈ 9 per inch per ASTM C518 @ 35°F mean temperature PIR: ≈ 7.2 per inch per ASTM C518 @ 75°F mean temperature / ≈ 8.25 per inch per ASTM C518 @ 35°F mean temperature



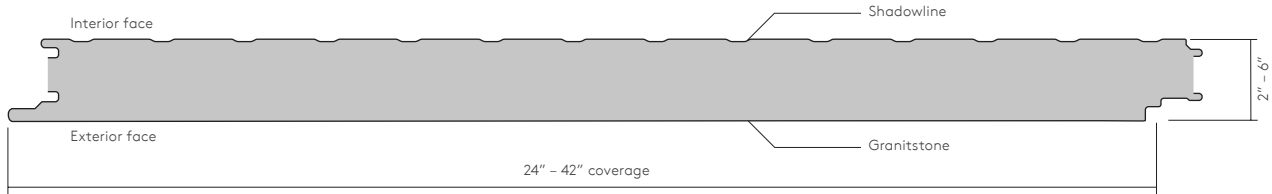
# KS Granitstone®

The KS Granitstone® finish provides the appearance of stucco or natural stone, with an acrylic aggregate finish factory applied over primed steel, this product is also available in Granitstone Quartz.

KS Granitstone panels provide design flexibility and can be used in multiple applications.



Insulation Core:	QuadCore® Technology or PIR
Profile:	Exterior: Flat with Granitstone or Granitstone Quartz finish / Interior: Shadowline
Embossing:	Exterior: Stucco / Interior: Stucco or non-embossed
Gauge:	Exterior: 24, 22 ga / Interior: 26, 24, 22 ga
Width:	24", 30", 36", 42"
Thickness:	2", 2.5", 3", 4", 5", 6"
Length:	8' – 30'
Reveal option:	Vertical: 1/8" / Horizontal: 1/8" or 3/8"
Orientation:	Vertical or horizontal
Post fabrication (optional):	Transverse bends (Manufacturing limitations apply. Please contact us for detailed information.)
R-value:	QuadCore® Technology: ≈ 8 per inch per ASTM C518 @ 75°F mean temperature / ≈ 9 per inch per ASTM C518 @ 35°F mean temperature PIR: ≈ 7.2 per inch per ASTM C518 @ 75°F mean temperature / ≈ 8.25 per inch per ASTM C518 @ 35°F mean temperature





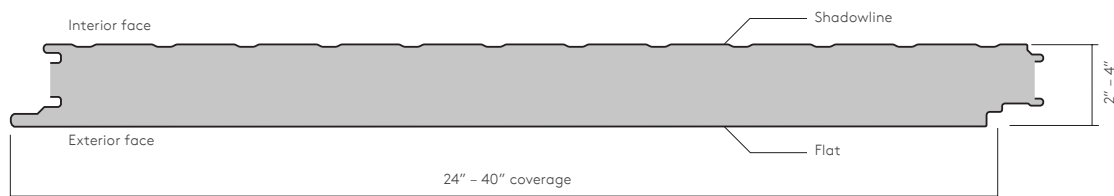
# Optimo®

Optimo® delivers a clean, smooth and aesthetically appealing modern solution. Incorporating superior airtightness as well as high R-value.

Kingspan's Optimo® gives you that, and more, available in either a non-embossed or embossed texture. Optimo's single component design can reduce on-site installation time by up to 50% compared to traditional site assembled systems. Optimo® is suitable for high volume, large scale, new and retrofit applications across the commercial and industrial sectors.



Insulation Core:	QuadCore® Technology or PIR
Profile:	Exterior: Flat / Interior: Shadowline or flat
Embossing:	Exterior: Stucco or non-embossed / Interior: Stucco or non-embossed
Gauge:	Exterior: 22 ga / Interior: 26, 24, 22 ga
Width:	24", 30", 36", 40"
Thickness:	2", 2.5", 3", 4", 5", 6"
Length:	Embossed: 8' – 32' / Non-embossed: 8' – 20'
Reveal option:	Vertical: 1/8", 1" or 2" / Horizontal: 1/8", 3/8", 1" or 2"
Orientation:	Vertical or horizontal
Post fabrication (optional):	Trimless ends, folded corners, transverse bends. (Manufacturing limitations apply. Please contact us for detailed information.)
R-value:	QuadCore® Technology: ≈ 8 per inch per ASTM C518 @ 75°F mean temperature / ≈ 9 per inch per ASTM C518 @ 35°F mean temperature PIR: ≈ 7.2 per inch per ASTM C518 @ 75°F mean temperature / ≈ 8.25 per inch per ASTM C518 @ 35°F mean temperature





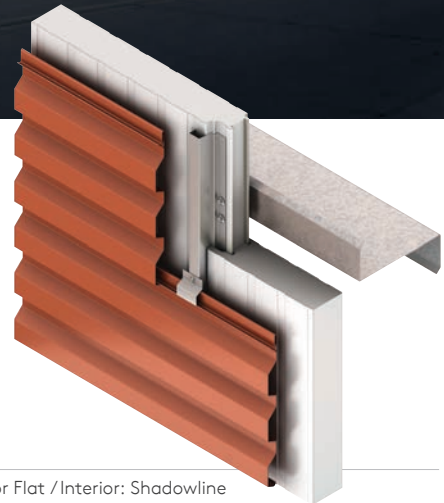




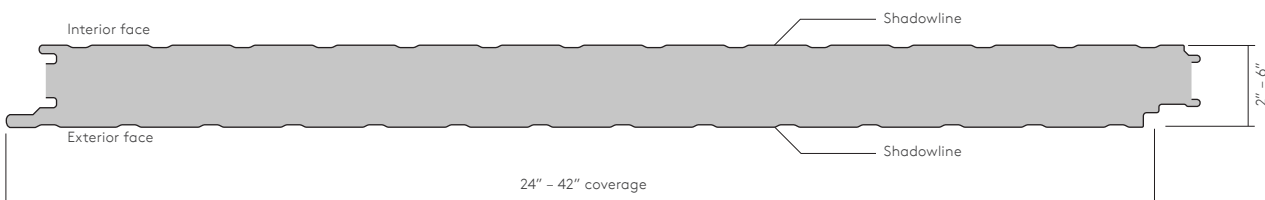
# KarrierPanel®

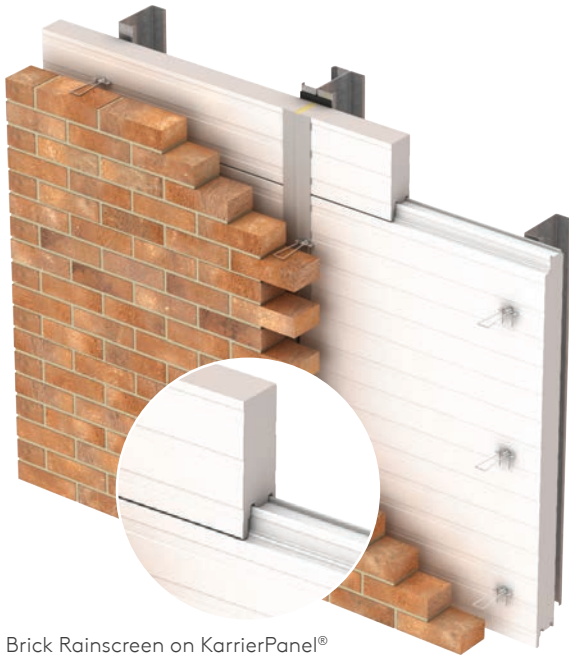
KarrierPanel® is a cost effective universal barrier wall alternative solution to traditional multi-component wall systems.

Comprising of a KS Series panel and integrated rail, KarrierPanel® is the ideal barrier wall to support secondary rainscreen systems such as brick or metal façades.

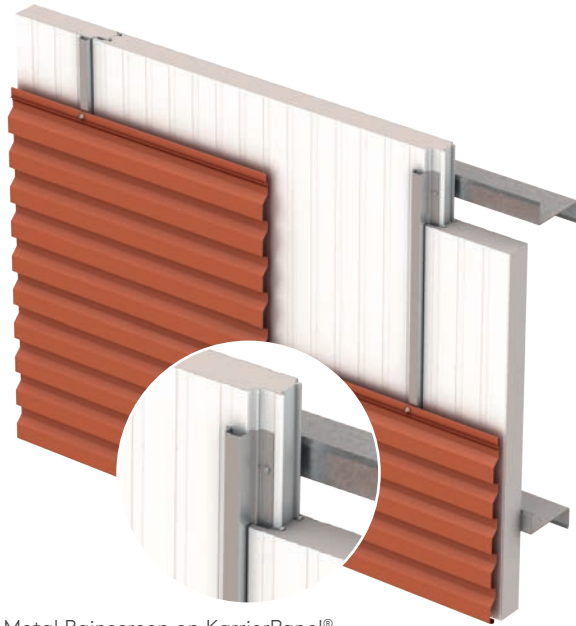


Insulation Core:	QuadCore® Technology or PIR
Profile:	Exterior: Shadowline, Micro-Rib, Mini Micro-Rib, Mini-Wave, Azteco™, or Flat / Interior: Shadowline
Embossing:	Exterior: Stucco or non-embossed / Interior: Stucco or non-embossed
Gauge:	Exterior: 26, 24, 22 ga / Interior: 26, 24, 22 ga
Width:	24", 30", 36", 40", 42"
Thickness:	2", 2.5", 3", 4", 5", 6"
Length:	8' – 53'
Reveal option:	3/8" to accommodate rail
Orientation:	Vertical or horizontal
Post fabrication:	N/A
R-value:	QuadCore® Technology: ≈ 8 per inch per ASTM C518 @ 75°F mean temperature / ≈ 9 per inch per ASTM C518 @ 35°F mean temperature PIR: ≈ 7.2 per inch per ASTM C518 @ 75°F mean temperature / ≈ 8.25 per inch per ASTM C518 @ 35°F mean temperature





Brick Rainscreen on KarrierPanel®



Metal Rainscreen on KarrierPanel®

## Design Flexibility

KarrierPanel® can support a range of rainscreen finishes to compliment any architectural scheme.





# KarrierPanel®

---

## Unique KarrierRail

KarrierPanel® utilizes a Kingspan designed unique rail. This stable and secure structural rail safely transmits positive loads from the multiple façades to the structural supports behind the insulated panels.

Similarly, expansion fasteners secure the exposed rail edge, ensuring that the system safely handles negative loads as well.

The rail has been developed to fully integrate with Kingspan's KS series panel joint. This rail system does not penetrate the air vapor barrier and enables multiple types of rain screens to be attached to the KarrierPanel® rail such as brick, single skin metal, aluminum composite and various tile systems.

Installation is quick, simple and easy, as the rail is installed during normal panel installation, and is secured using standard panel fasteners in a one step procedure.

The standard rail configuration is 16 gauge Galvalume, 50 KSI steel. Available in various lengths with a 1, 2 and 3 inch bearing surface.



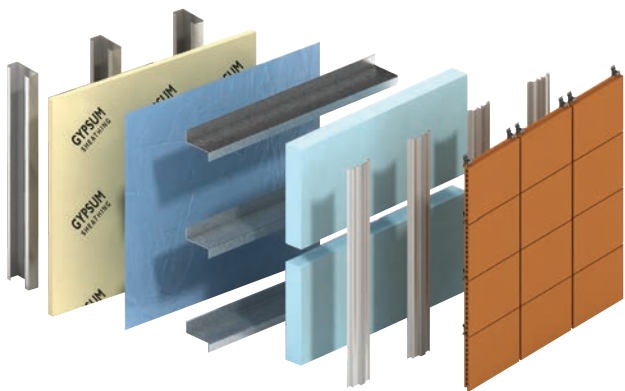
---

## Benefits of the KarrierPanel® Wall System Vs Traditional Built-up Construction:

- The single component KarrierPanel® wall system combines the superior thermal performance of IMPs with an air, water and vapor barrier.
- More uniform temperature distribution throughout the wall ensures moisture control.
- Eliminates energy losses associated with thermal-bridging cavity insulation.
- Eliminates concerns over UV exposure as compared to conventional rainscreen components.
- Eliminates the potential for compromising the air, water and vapor barrier and allows for visual inspection and testing.
- Results in quicker ROI.

## Build Speed

KarrierPanel® as a single component system increases speed of build, minimizes delays and the need for multiple trades.



Typical multi-part  
façade system

Vs



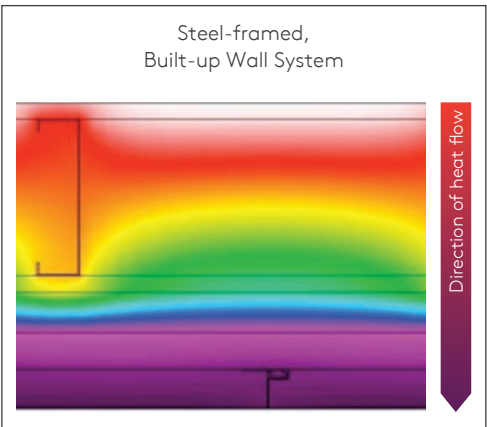
1 Single Component  
KarrierPanel® Wall  
System

KarrierPanel® System with Metal  
Single Skin Rainscreen

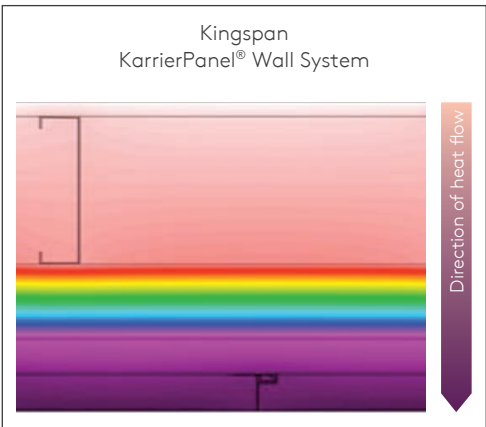
- Faster close-in and dry-in for reduced building costs.
- The single component system results in less labor time on-site and construction waste.
- Reduces delays in construction experienced with scheduling multiple trades.
- Increase in build speed allows faster project completion and reduces business disruption.

## Thermal Performance

The insulated panel provides excellent thermal performance with high R-value and airtightness with an air, water and vapor barrier.

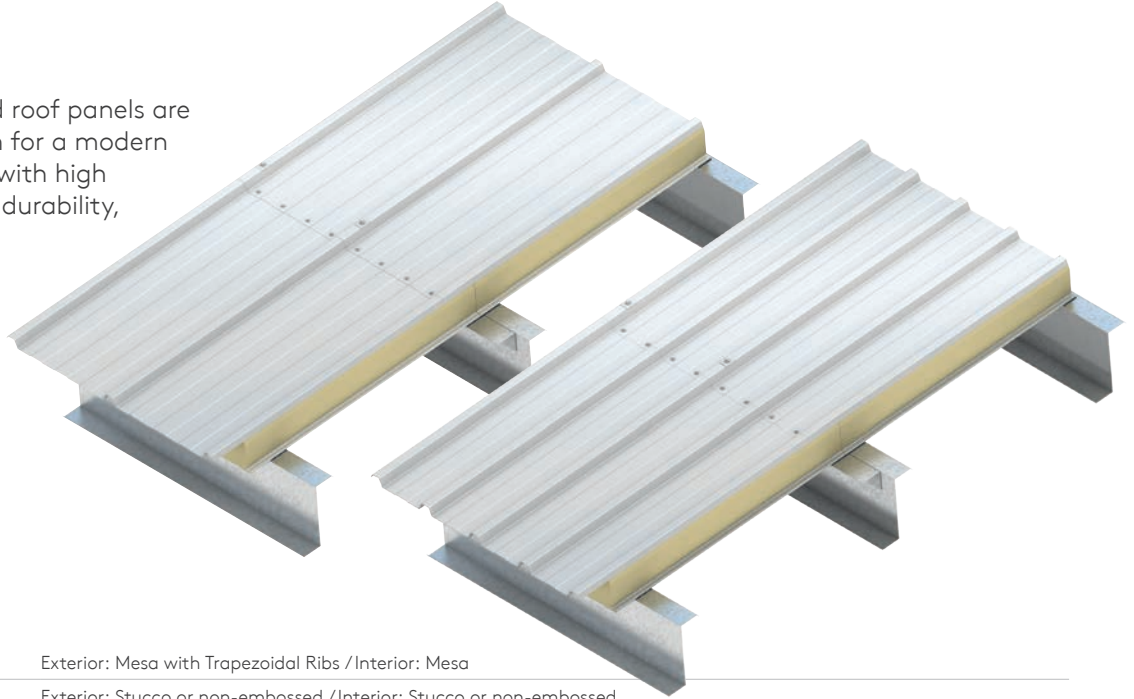


Vs



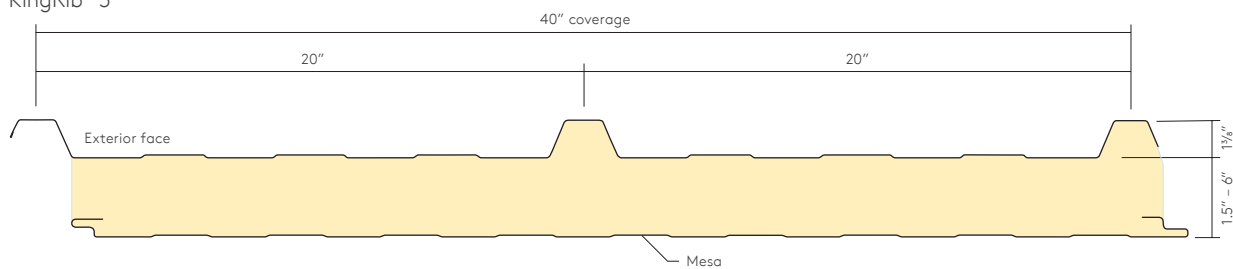
# KingRib® 3 / KingRib® 5

KingRib® insulated roof panels are the perfect option for a modern design combined with high energy-efficiency, durability, and high R-value.

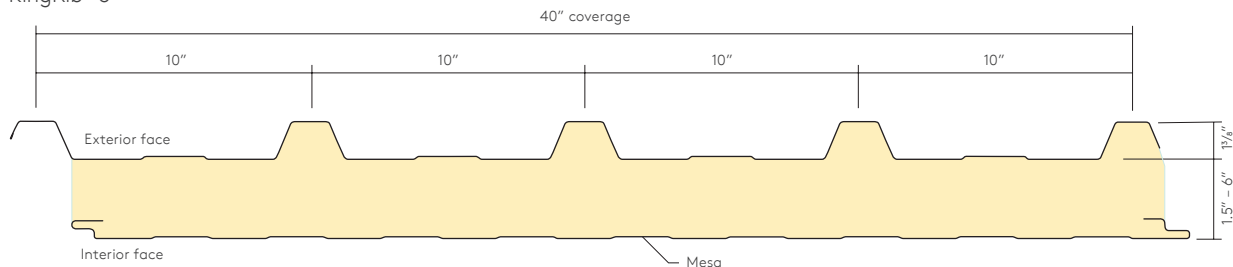


Profile:	Exterior: Mesa with Trapezoidal Ribs / Interior: Mesa
Embossing:	Exterior: Stucco or non-embossed / Interior: Stucco or non-embossed
Gauge:	Exterior: 26 ga Standard (24, 22 ga optional) / Interior: 26 ga Standard (24, 22 ga optional)
Width:	40"
Thickness:	1.5", 2.5", 4", 5", 6"
Length:	8' - 50' (please contact your Kingspan Regional Sales Manager or Kingspan Technical Services for detailed limitations on specific lengths)
Post fabrication (optional):	Cutbacks
R-value:	≈ 7.2 per inch per ASTM C518 @ 75°F mean temperature / ≈ 8.2 per inch per ASTM C518 @ 40°F mean temperature

## KingRib® 3



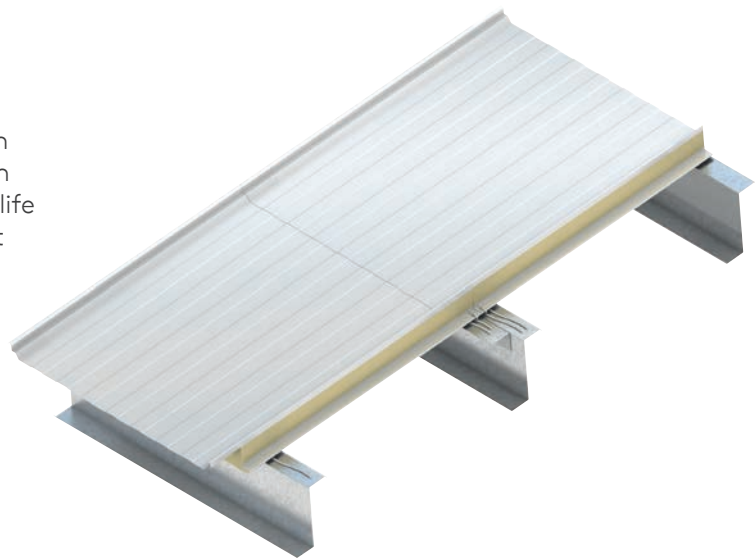
## KingRib® 5



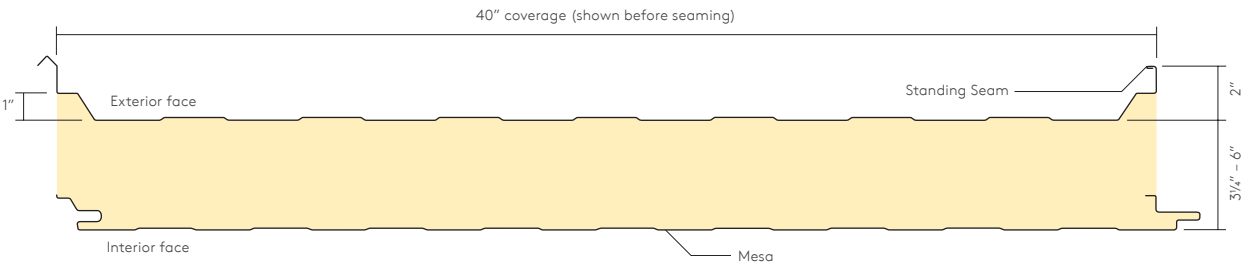


# KingSeam<sup>®</sup>

KingSeam<sup>®</sup> insulated standing seam roof panels are designed to offer design flexibility and aesthetics combined with high R-values and unparalleled service life performance. Ideal for new and retrofit applications across a wide variety of building sectors.

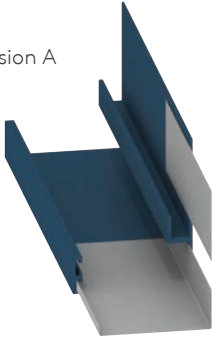


Profile:	Exterior: Mesa with Trapezoidal Ribs / Interior: Mesa
Embossing:	Exterior: Non-embossed / Interior: Stucco or non-embossed
Gauge:	Exterior: 26 ga Standard (24, 22 ga optional) / Interior: 26 ga Standard (24, 22 ga optional)
Width:	40"
Thickness:	3.25", 4", 5", 6"
Length:	8' – 50' (please contact your Kingspan Regional Sales Manager or Kingspan Technical Services for detailed limitations on specific lengths)
Post fabrication (optional):	Cutbacks
R-value:	≈ 7.2 per inch per ASTM C518 @ 75°F mean temperature / ≈ 8.2 per inch per ASTM C518 @ 40°F mean temperature

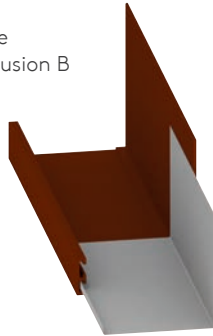


# Aluminum Extrusions

Base  
extrusion A



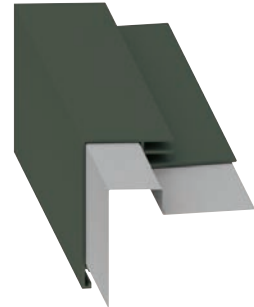
Base  
extrusion B



Base extrusion C



Wall parapet extrusion



Inside corner  
extrusion



Outside corner  
extrusion



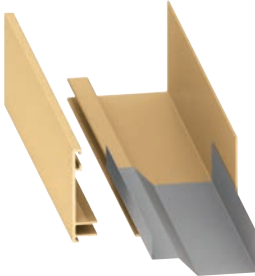
Vertical top hat  
extrusion – flush



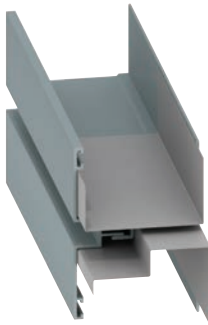
Vertical top hat  
extrusion – recessed



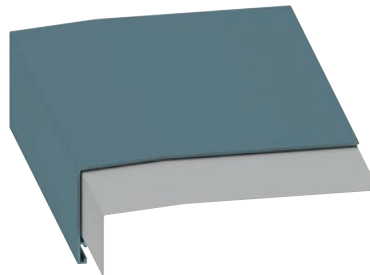
Jamb extrusion



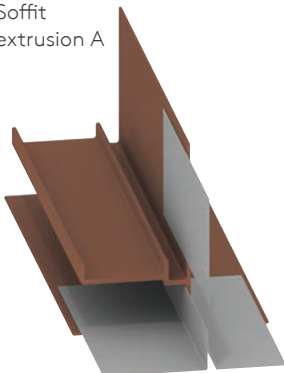
Vertical panel stack joint



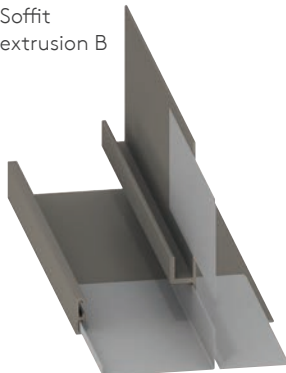
Opening sill extrusion



Soffit  
extrusion A

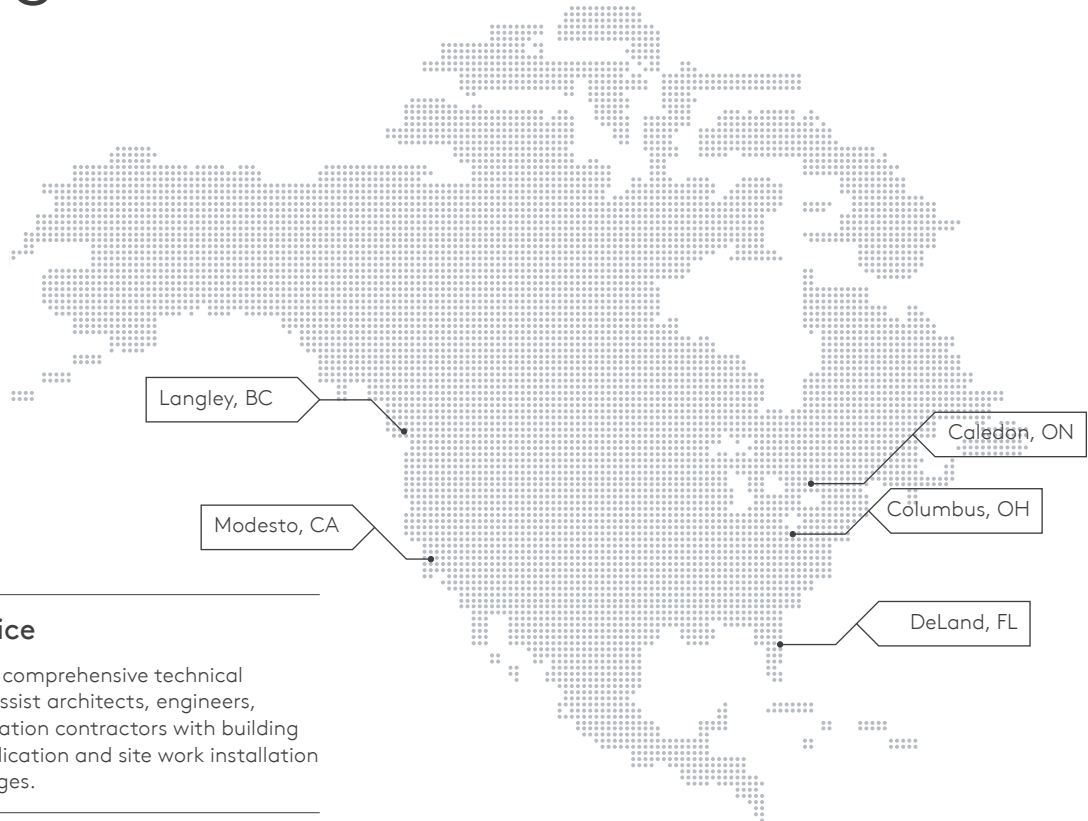


Soffit  
extrusion B



Aluminum extrusions can be painted to match or accent wall and roof panels.

# Testing and Services



---

## Technical Service

Kingspan provides a comprehensive technical advisory service to assist architects, engineers, specifiers and installation contractors with building design, product application and site work installation training and challenges.

---

## Energy Service

Kingspan offers a performance energy modelling service on select projects to help design teams understand scenarios contributing to optimizing the energy efficiency of insulated metal panel assemblies based on meeting or exceeding ASHRAE 90.1 requirements.

---

## Customer Service

Our dedicated team provides focused customer service for all pre and post-order administration, delivery scheduling, and installer support, ensuring a seamless coordinated customer experience.

---

## Marketing Support

Our marketing team aims to provide a fast turnaround on standard sample and literature requests, eliminating delays with planning and client approval of material, so that your project begins on time.

Additional marketing support is provided through the use of project case studies.

---

## Field Service Support

Kingspan's Field Service Engineering Team offer customers free contractor training on the installation of new and existing products, site inspection services as well as advice on mechanical handling solutions.

---

## Sales Team

Our regionally based sales team can provide assistance on any project from the design stage through to site installation.

Find your local sales rep on our website [www.kingspanpanels.com](http://www.kingspanpanels.com)

Email Us

Technical services:	<a href="mailto:technical.NA@kingspanpanels.com">technical.NA@kingspanpanels.com</a>
Installation seminars:	<a href="mailto:installation@kingspanpanels.com">installation@kingspanpanels.com</a>
Marketing:	<a href="mailto:marketingdept@kingspanpanels.com">marketingdept@kingspanpanels.com</a>
Product samples:	<a href="mailto:samples.NA@kingspan.com">samples.NA@kingspan.com</a>

Follow Kingspan on:





# High Performance Color Coating Systems

Kingspan offers a full spectrum of vibrant colors for every color scheme. The high performance coatings provide long-life protection, color and gloss retention.

---

## Kingspan Coating System Options

### Weather XL – Siliconized Modified Polyester (SMP)

WEATHER XL coating systems utilize only ceramic and inorganic pigments offering superior color stability, chalk and fade resistance as well as gloss retention.

### Solid Fluropon® PVDF Colors – Kynar 500® / Hylar 5000

Fluropon coatings are durable polyvinylidene coating system containing 70% Kynar or Hylar resins, ceramic and other inorganic pigments. This system provides a powerful chemical bond, superior resistance to ultraviolet radiation resulting in exceptional color retention, resistance to chalking and chemical degradation.

### Mica Fluropon Classic® II PVDF Colors\*\*

The coating system consists of a special primer and a durable color coat containing mica pearlescent flakes.

### Metallic Fluropon Classic® PVDF Colors\*\*

Metallic coatings employ metal flakes in the color coat. The system uses a special primer, a 70% Kynar 500® or Hylar 5000® resin based Fluropon color coat and a clear topcoat, to provide outstanding color and gloss retention, increased abrasion resistance and added protection against atmospheric contaminants.

Inquire about our range of coatings with high Solar Reflectance Index.

---

## Flurothane Coastal PVDF Colors

This is a premium Fluoropolymer (PVDF) system developed for use in the most extreme coastal environments (less than 1500 feet from the coastline). The unique aspect about this system is the innovative thick film primer. This is field-proven and provides a high performance exterior finish delivering outstanding resistance to ultraviolet rays, exceptional color retention and resistance to chalking from salt spray and harsh coastal environments.

---

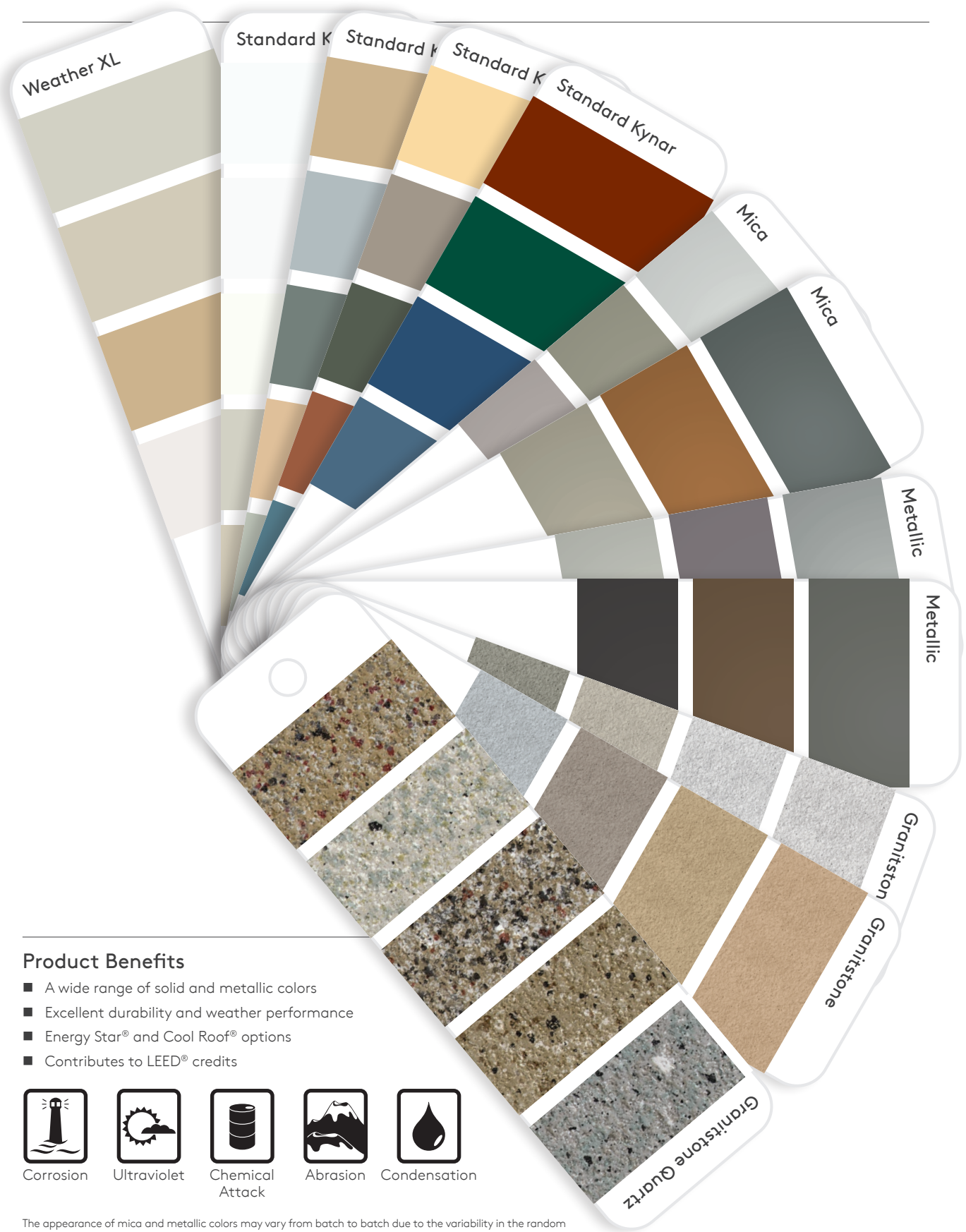
## Warranties

Kingspan and their suppliers provide standard coating warranties for up to 20 years.

\*Some colors require clear-coat protection.

\*\*Due to the orientation of aluminum / pearlescent flake pigments during application, the appearance will be directional in nature on metallic coatings.





**Product Benefits**

- A wide range of solid and metallic colors
- Excellent durability and weather performance
- Energy Star® and Cool Roof® options
- Contributes to LEED® credits



Corrosion



Ultraviolet



Chemical  
Attack



Abrasion



Condensation

The appearance of mica and metallic colors may vary from batch to batch due to the variability in the random orientation of mica mineral pigments and metallic flakes used in the manufacturing process. To achieve the best result for your project, thoughtful planning is highly recommended, particularly if the project is phased. Please speak with your Kingspan representative for advice and guidance.

# Projects







Marine Gateway Cineplex  
Vancouver, BC



Northeast Kingdom  
Human Services  
Derby, VT



# Projects

Chappellet Winery  
St. Helena, CA



100 West 125th  
New York, NY



Gulfstream Building 6003  
Savannah, GA









# Integrated Systems for Building Envelopes

We offer an unrivalled range of compatible systems that when designed and installed optimally, deliver superior building lifetime performance.

Kingspan building envelopes are designed to be faster to build and deliver exceptional results in terms of:

- Fire safety
- Operating costs (due to better thermal efficiency and air tightness)
- Low maintenance (due to robust construction and superior weather resilience)
- Comfort (due to more natural daylight, improved temperature regulation and excellent acoustics)
- Aesthetics



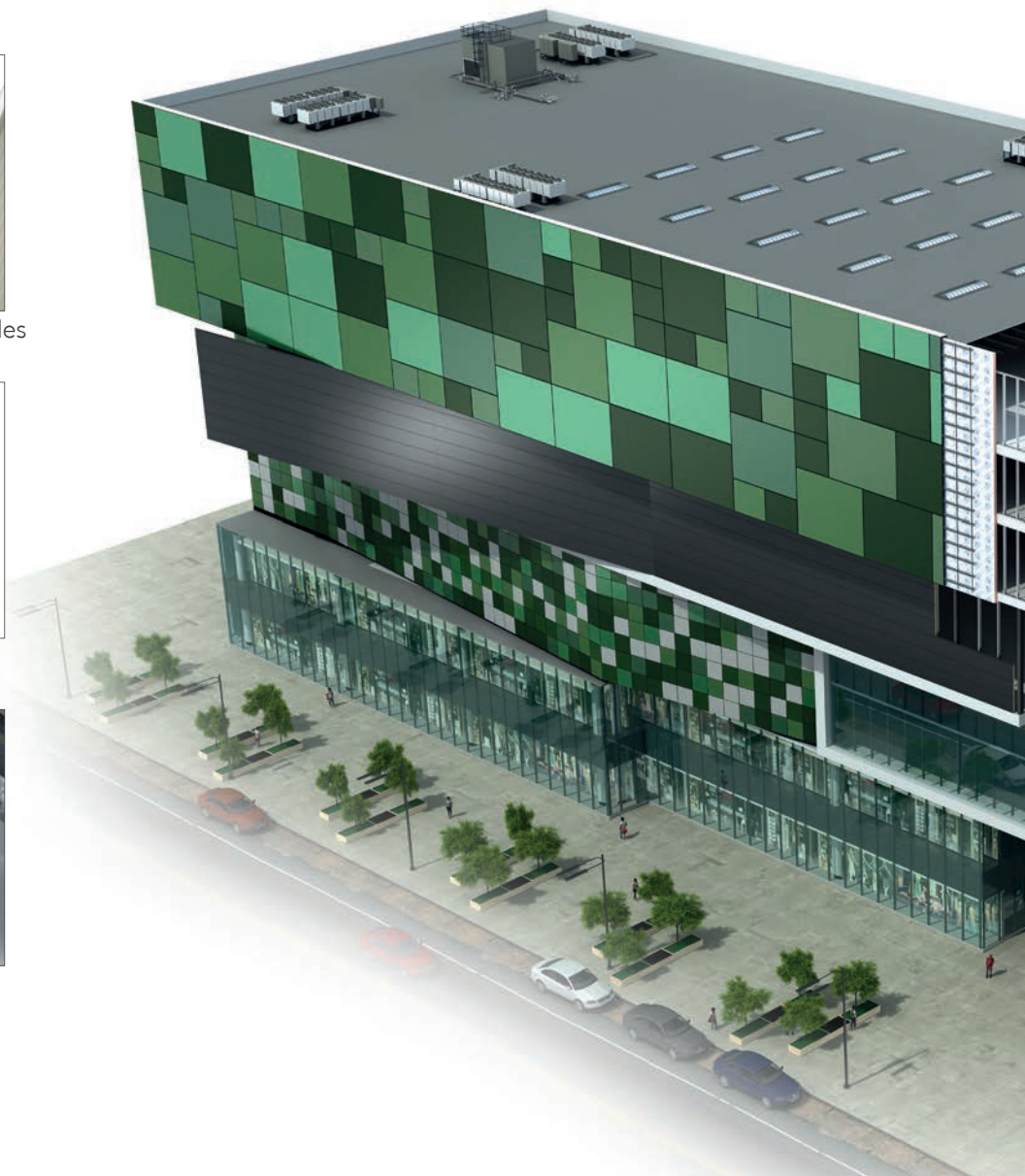
Kingspan Insulated Panels & Façades



Kingspan Insulation Boards

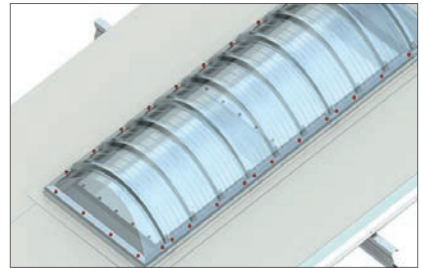
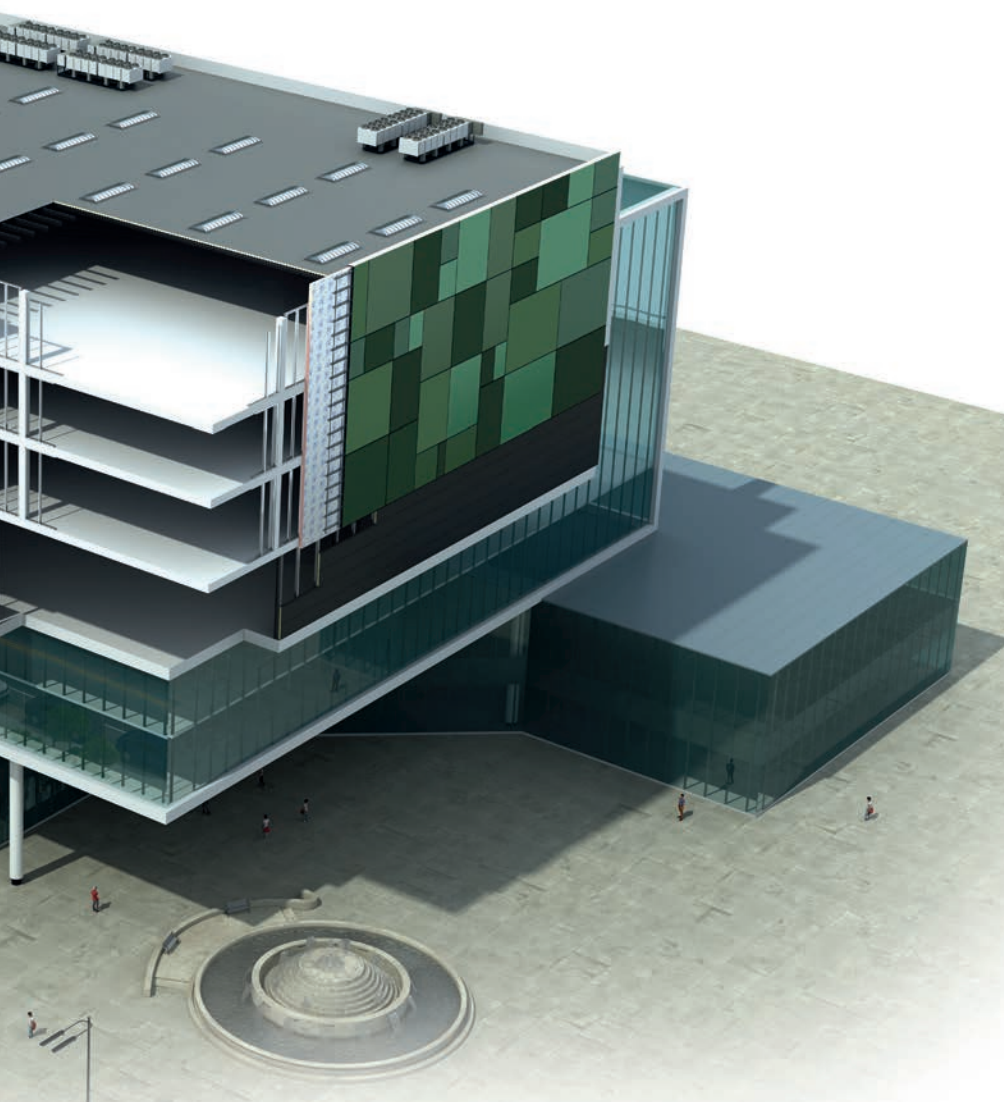


Kingspan Industrial Insulation

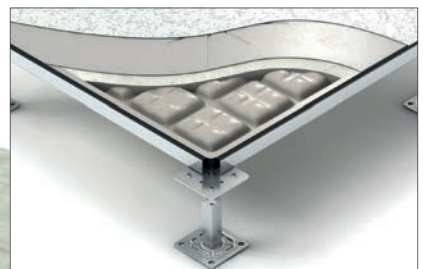


Our technical design team advises on how to achieve this high performance with a wide range of supports including:

- Continuous training and installation certification
- Structural calculations
- Building Information Modelling (BIM)
- Whole building energy efficiency advice
- Fire engineering and design proposals
- Whole project pricing services
- Complete envelope design support services



Kingspan Light + Air



Kingspan Access Floors

---

# Contact Details

---

## USA

DeLand | FL

T: 877-638-3266

Modesto | CA

T: 800-377-5110

E: [info.NA@kingspanpanels.com](mailto:info.NA@kingspanpanels.com)

[www.kingspanpanels.us](http://www.kingspanpanels.us)

---

## Canada

Caledon | ON

T: 866-442-3594

Langley | BC

T: 877-937-6562

E: [info.NA@kingspanpanels.com](mailto:info.NA@kingspanpanels.com)

[www.kingspanpanels.ca](http://www.kingspanpanels.ca)

For the product offering in other markets please contact your local sales representative or visit [www.kingspanpanels.com](http://www.kingspanpanels.com)

To ensure you are viewing the most recent and accurate product information, please visit [www.kingspanpanels.com](http://www.kingspanpanels.com)

Care has been taken to ensure that the contents of this publication are accurate, but Kingspan Limited and its subsidiary companies do not accept responsibility for errors or for information that is found to be misleading. Suggestions for, or description of, the end use or application of products or methods of working are for information only and Kingspan Limited and its subsidiaries accept no liability in respect thereof.

© Kingspan and the Lion Device, QuadCore, Granitstone, Optimo, KarrierPanel, KingRib and KingSeam are Registered Trademarks of the Kingspan Group plc in the US, Canada and other countries.

TM Azteco is a Trademark of Kingspan Group plc.

© Kingspan Insulated Panels Inc.

