

KARRIER™ PANEL - BRICK

| | |
|-----------------|-----------------------------------|
| KPH-DS-01-BRICK | KARRIER™ PANEL - BRICK DISCLAIMER |
| KPH-PJ-01-BRICK | ENGAGED PANEL JOINT W/ BRICK TIE |
| KPH-PJ-02-BRICK | VERT. JOINT W/ MEMBRANE (PLAN) |
| KPH-PJ-03-BRICK | VERT. JOINT W/ MEMBRANE (SECTION) |
| KPH-BS-01-BRICK | BASE WITH MEMBRANE |
| KPH-BS-02-BRICK | BASE LAYERING |
| KPH-BS-03-BRICK | MENDING PLATE TO BASE CONDITION |
| KPH-OC-01-BRICK | OUTSIDE CORNER |
| KPH-FO-01-BRICK | F.O. HEADER CONDITION |
| KPH-FO-02-BRICK | VERT. JOINT TRANS. TO F.O. HEADER |
| KPH-FO-03-BRICK | F.O. JAMB CONDITION |
| KPH-FO-04-BRICK | F.O. SILL CONDITION |
| KPH-FO-05-BRICK | F.O. JAMB TO SILL ASSEMBLY |
| KPH-FO-06-BRICK | F.O. JAMB TO SILL FLASHING |
| KPH-FO-07-BRICK | F.O. JAMB TRIM |
| KPH-FO-08-BRICK | F.O. JAMB TO SILL CORNER FLASHING |
| KPH-FO-09-BRICK | F.O. JAMB TO SILL CORNER MEMBRANE |
| KPH-FO-10-BRICK | F.O. SILL MEMBRANE |
| KPH-FO-11-BRICK | F.O. JAMB MEMBRANE |
| KPH-FO-12-BRICK | F.O. SILL TRIM |
| KPH-FO-13-BRICK | F.O. SILL PAN |
| KPH-FO-14-BRICK | F.O. MASONRY SILL |
| KPH-FO-15-BRICK | F.O. JAMB TO HEADER ASSEMBLY |
| KPH-FO-16-BRICK | F.O. JAMB TO HEADER FLASHING |
| KPH-FO-17-BRICK | F.O. JAMB TRIM |
| KPH-FO-18-BRICK | F.O. JAMB MEMBRANE AT HEADER |
| KPH-FO-19-BRICK | F.O. SHEET ANGLE |
| KPH-FO-20-BRICK | F.O. HEADER TRIM |
| KPH-FO-21-BRICK | F.O. HEADER FLASHING |
| KPH-SJ-01-BRICK | SHELF ANGLE |
| KPH-TF-01-BRICK | VERTICAL TRANSITION |
| KPH-PR-01-BRICK | PARAPET CONDITION |
| KPH-SJ-01-BRICK | SHELF ANGLE |

INDEX SHEET

DETAIL #: XX-XX-XX-BRICK

DATE: 2019



www.kingspanpanels.us
www.kingspanpanels.ca

KARRIER™ PANEL - BRICK

DISCLAIMERS:

THESE DETAILS ARE PROVIDED AS A GUIDELINE FOR PROPER PANEL AND ASSOCIATED COMPONENT INSTALLATION, AND ARE BASED ON INDUSTRY ACCEPTED PRACTICES.

LOCATION OF VAPOR BARRIERS AND ASSOCIATED SEALANTS IN THESE DETAILS ARE BASED ON TYPICAL DESIGN PRACTICES FOR MOST U.S. AND CANADIAN CLIMACTIC ZONES. (THE PRIMARY VAPOR BARRIER IS PLACED ON THE "WARM" SIDE IN WINTER).

PROJECTS LOCATED IN AREAS SUBJECT TO EXTREME COLD AND/OR HIGH SNOW LOADS MAY REQUIRE MODIFICATIONS TO THESE DETAILS - CONTACT KINGSPAN TECHNICAL SERVICES FOR SPECIFIC PROJECT RECOMMENDATIONS.

ALL STRUCTURAL SUPPORTS ARE NOT BY KINGSPAN AND ARE SHOWN FOR CLARIFICATION AND ILLUSTRATION PURPOSES ONLY.

WALL SYSTEM DEFLECTIONS ARE TO BE DETERMINED BY THE ENGINEER OF RECORD.

THE ARCHITECT AND/OR CONTRACTOR MUST VERIFY THE COMPATIBILITY OF THE MEMBRANE MATERIALS WITH THE ADJOINING SEALANT.

ALL DETAILS ARE BASED ON TYPICAL STUDWALL CONSTRUCTION WITH SINGLE HOLE CLIP AND FASTENER. FOR ATTACHMENT TO OTHER WALL SUPPORT SYSTEMS, PLEASE CONTACT KINGSPAN TECHNICAL SERVICES FOR FASTENING RECOMMENDATIONS.

CONTACT KINGSPAN TECHNICAL SERVICES FOR MAXIMUM ALLOWABLE PANEL SPANS AND FASTENING PATTERNS.

DISCLAIMER

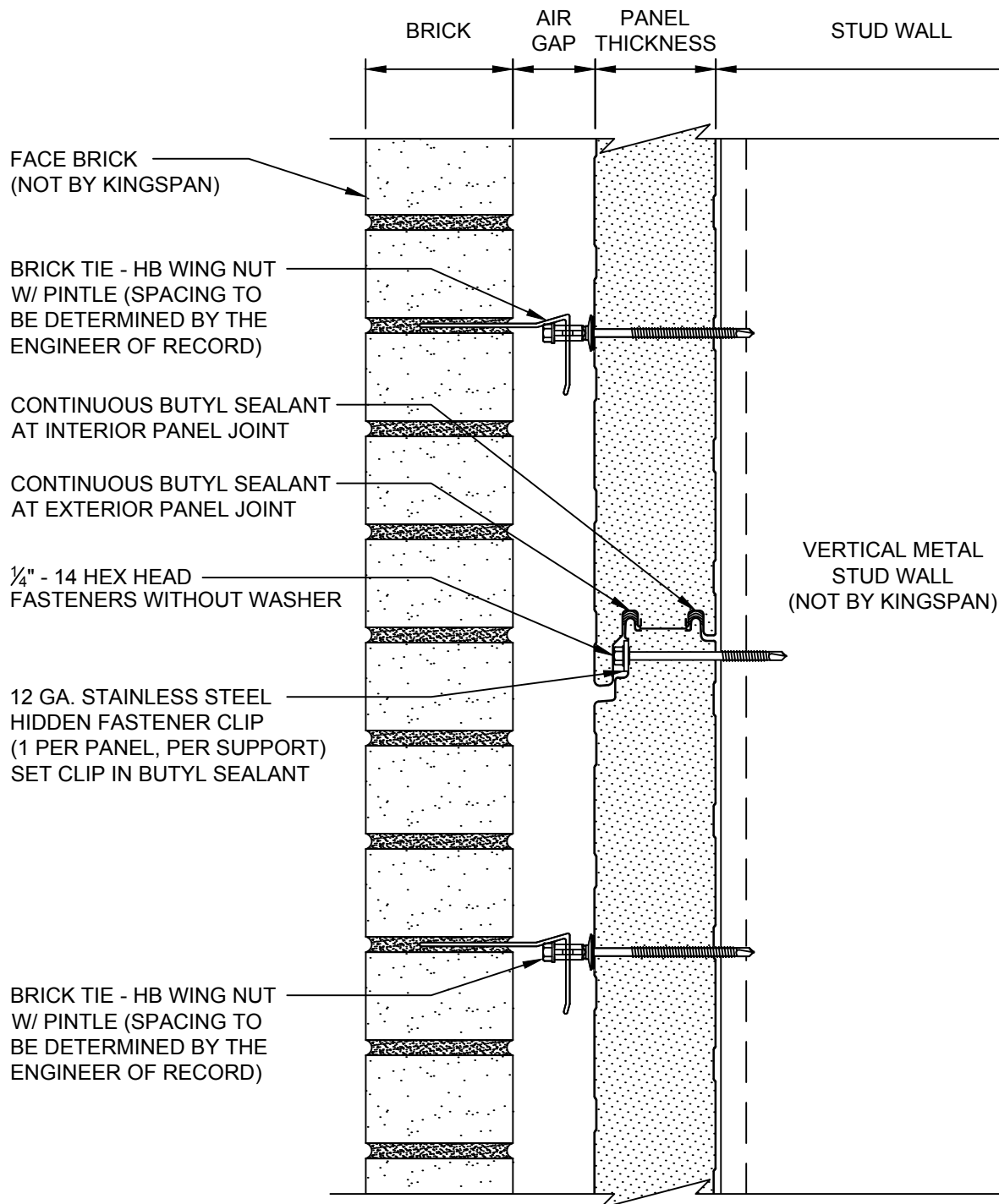
DETAIL #: KPH-DS-01-BRICK

DATE: 2019



www.kingspanpanels.us
www.kingspanpanels.ca

KARRIER™ PANEL - BRICK



**ENGAGED PANEL
JOINT W/ BRICK TIE**

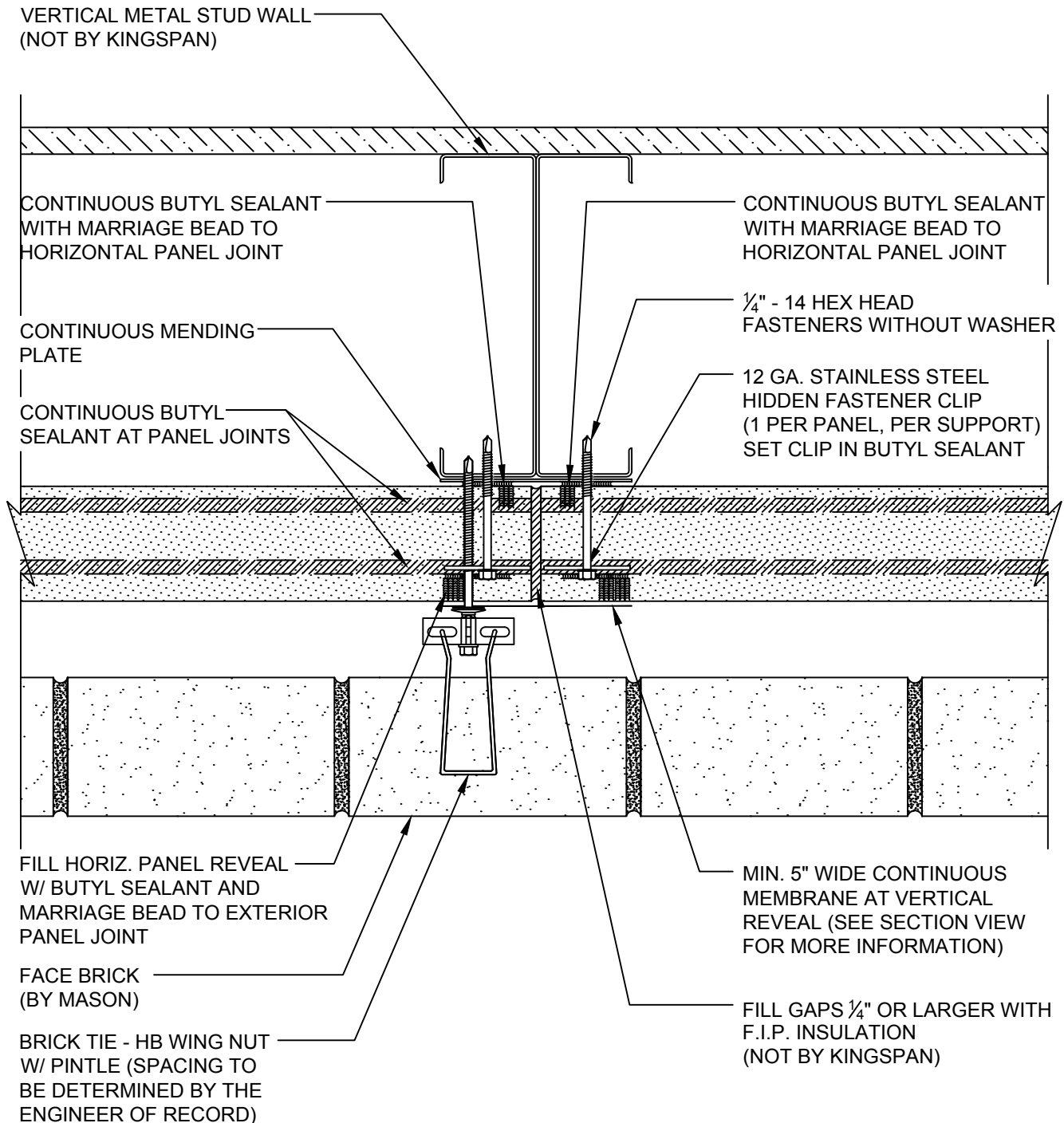
DETAIL #: KPH-PJ-01-BRICK

DATE: 2019

Kingspan
Insulated Panels

www.kingspanpanels.us
www.kingspanpanels.ca

KARRIER™ PANEL - BRICK



- NOTE: 1) CARE SHOULD BE TAKEN TO AVOID PLACING VERTICAL JOINT REVEALS ABOVE WINDOW/DOOR LOCATIONS WHERE POSSIBLE
2) USE A METAL FILE TO REMOVE ANY BURRS AT PANEL EDGES BEFORE INSTALLING MEMBRANE

VERTICAL JOINT
WITH MEMBRANE
PLAN VIEW

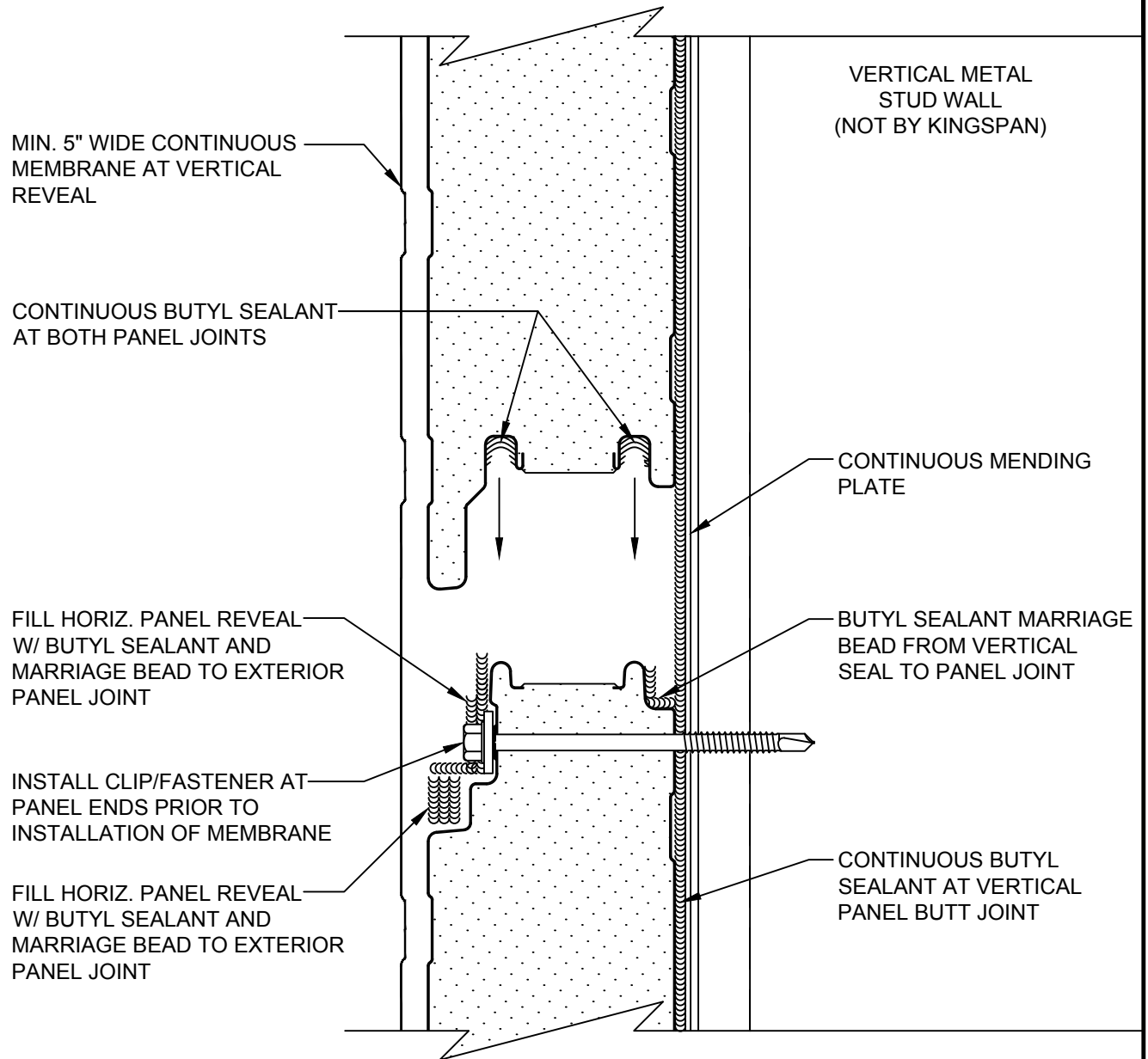
DETAIL #: KPH-PJ-02-BRICK

DATE: 2019



www.kingspanpanels.us
www.kingspanpanels.ca

KARRIER™ PANEL - BRICK



VERTICAL JOINT
WITH MEMBRANE
SECTION VIEW

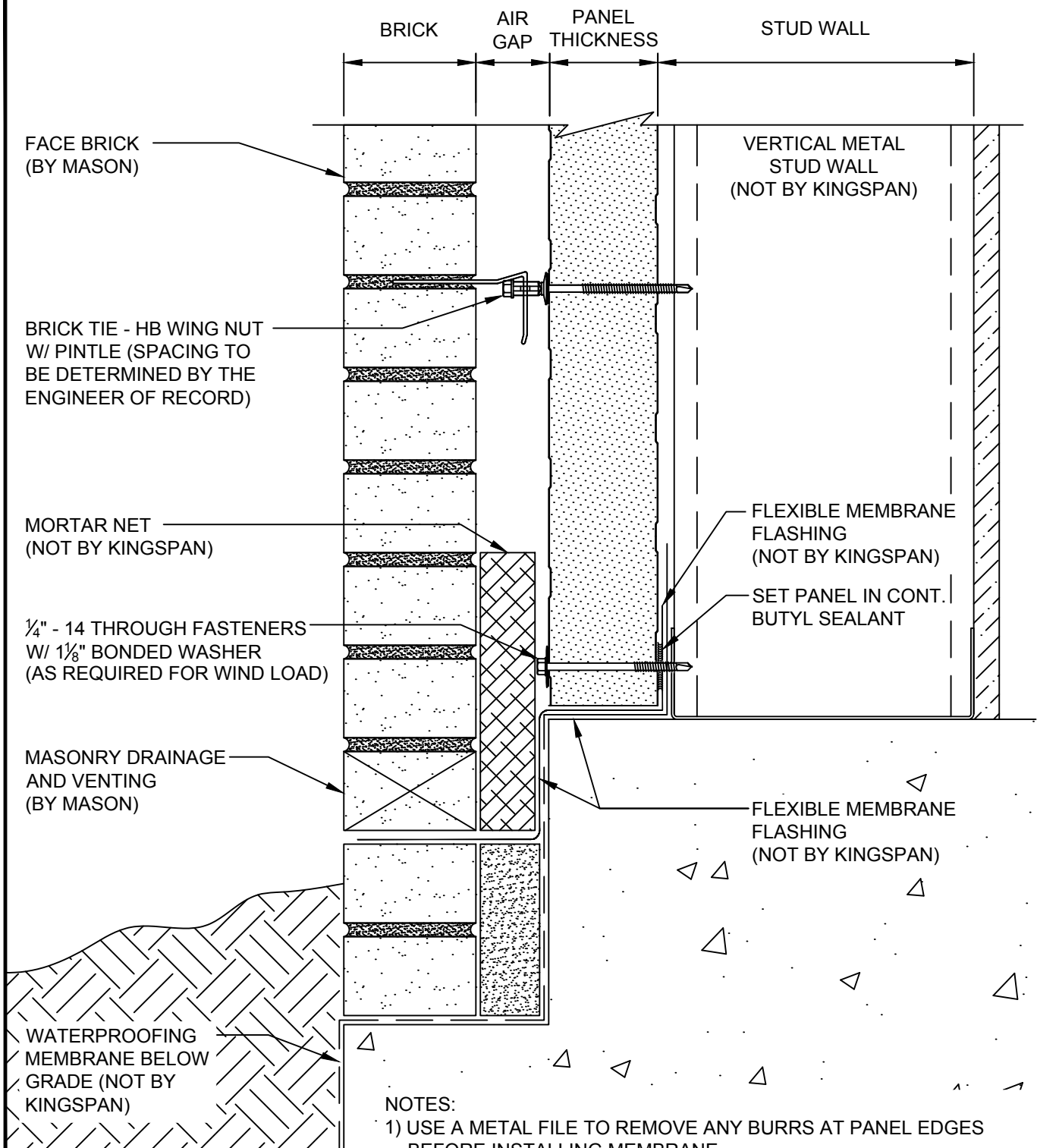
DETAIL #: KPH-PJ-03-BRICK

DATE: 2019



www.kingspanpanels.us
www.kingspanpanels.ca

KARRIER™ PANEL - BRICK



NOTES:

- 1) USE A METAL FILE TO REMOVE ANY BURRS AT PANEL EDGES BEFORE INSTALLING MEMBRANE
- 2) ARCHITECT AND/OR CONTRACTOR MUST VERIFY COMPATIBILITY OF MEMBRANE MATERIALS WITH ADJOINING SEALANT MATERIALS

**BASE WITH
MEMBRANE**

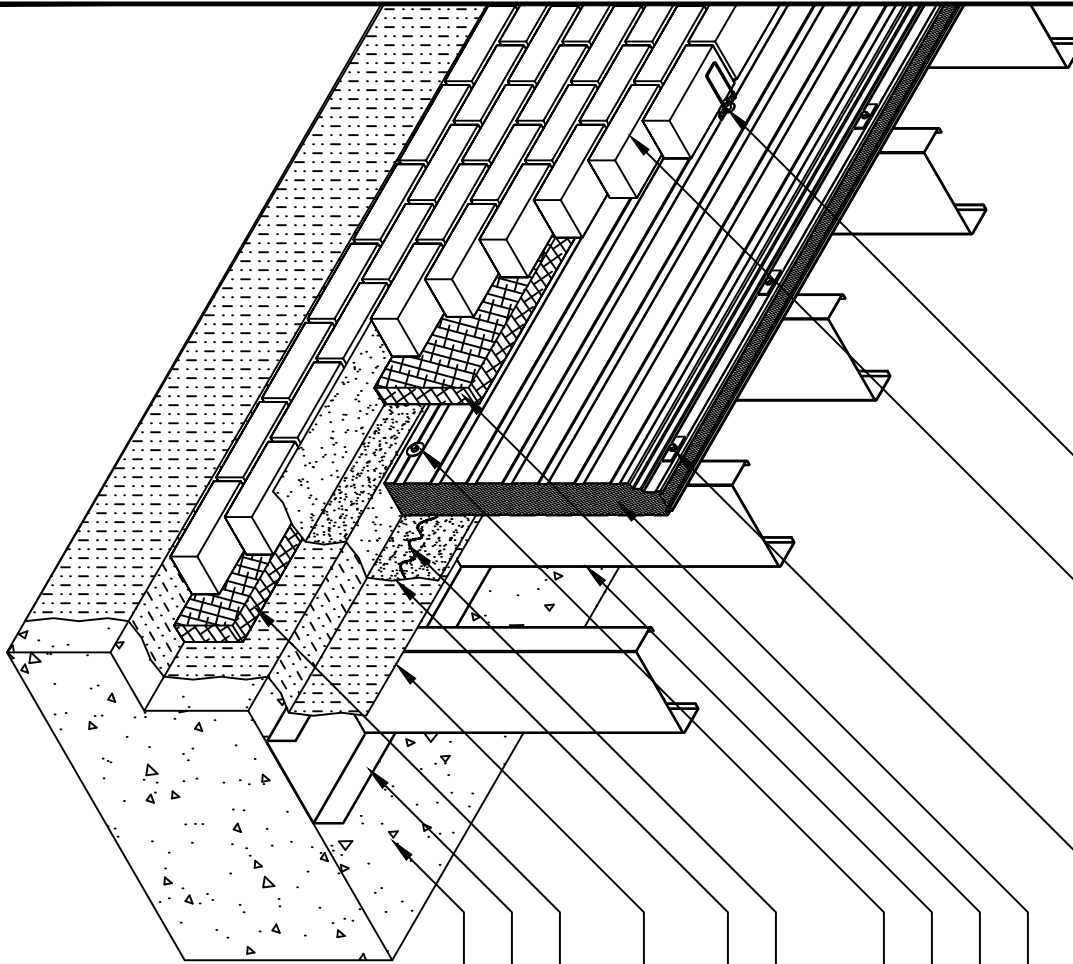
DETAIL #: KPH-BS-01-BRICK

DATE: 2019

Kingspan
Insulated Panels

www.kingspanpanels.us
www.kingspanpanels.ca

KARRIER™ PANEL - BRICK



BRICK TIE - HB WING NUT W/ PIN TIE
(SPACING TO BE DETERMINED BY THE
ENGINEER OF RECORD)

FACE BRICK (BY MASON)

12 GA. STAINLESS STEEL HIDDEN FASTENER CLIP
W/ 1/4" - 14 HEX HEAD FASTENER WITHOUT WASHER
(1 PER PANEL, PER SUPPORT) SET CLIP IN
BUTYL SEALANT

HORIZONTAL KINGSPAN PANEL

MORTAR NET (NOT BY KINGSPAN)

VERTICAL METAL STUD WALL (NOT BY KINGSPAN)

1/4" - 14 THROUGH FASTENERS
W/ 1/8" BONDED WASHER
(AS REQUIRED FOR WIND LOAD)

SET PANEL IN CONTINUOUS BUTYL SEALANT

FLEXIBLE MEMBRANE FLASHING
(NOT BY KINGSPAN)

FLEXIBLE MEMBRANE FLASHING
(NOT BY KINGSPAN)

MASONRY FILLER BLOCK (NOT BY KINGSPAN)

METAL BASE CHANNEL (NOT BY KINGSPAN)

CONCRETE SLAB & FOUNDATION (NOT BY KINGSPAN)

NOTES:

- 1) USE A METAL FILE TO REMOVE ANY BURRS AT
PANEL EDGES BEFORE INSTALLING MEMBRANE
- 2) ARCHITECT AND/OR CONTRACTOR MUST VERIFY
COMPATIBILITY OF MEMBRANE MATERIALS WITH
ADJOINING SEALANT MATERIALS

BASE LAYERING

DETAIL #: KPH-BS-02-BRICK

DATE: 2019



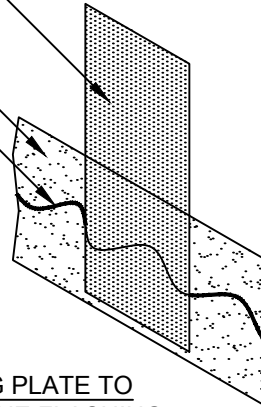
www.kingspanpanels.us
www.kingspanpanels.ca

KARRIER™ PANEL - BRICK

CONTINUOUS MENDING PLATE
AT VERTICAL JOINT LOCATIONS

FLEXIBLE MEMBRANE FLASHING
(NOT BY KINGSPAN)

CONTINUOUS BUTYL SEALANT
ALONG MEMBRANE, BEHIND
MENDING PLATE



MENDING PLATE TO
MEMBRANE FLASHING

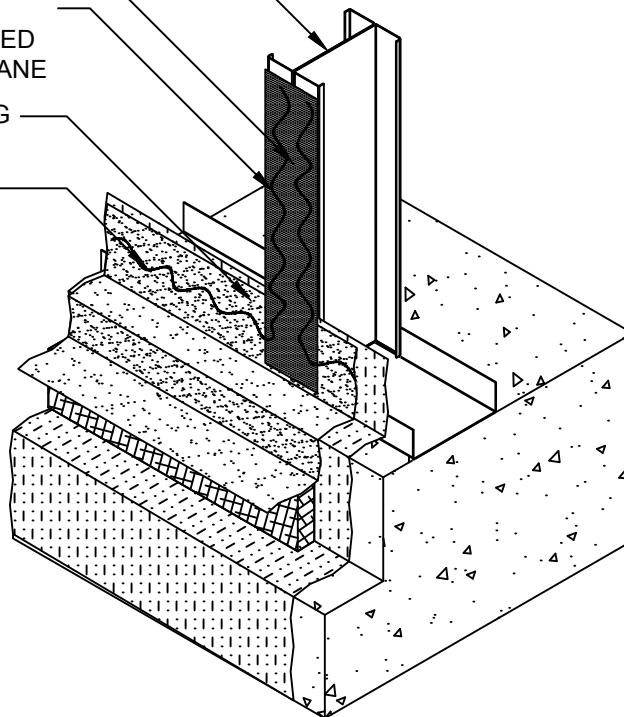
DOUBLE VERTICAL STUDS
(NOT BY KINGSPAN)

CONTINUOUS MENDING PLATE

CONTINUOUS BUTYL SEALANT
ALONG MENDING PLATE MARRIED
TO BUTYL SEALANT AT MEMBRANE

FLEXIBLE MEMBRANE FLASHING
(NOT BY KINGSPAN)

CONTINUOUS BUTYL SEALANT
ALONG MEMBRANE



MENDING PLATE TO
BASE CONDITION

MENDING PLATE TO
BASE CONDITION

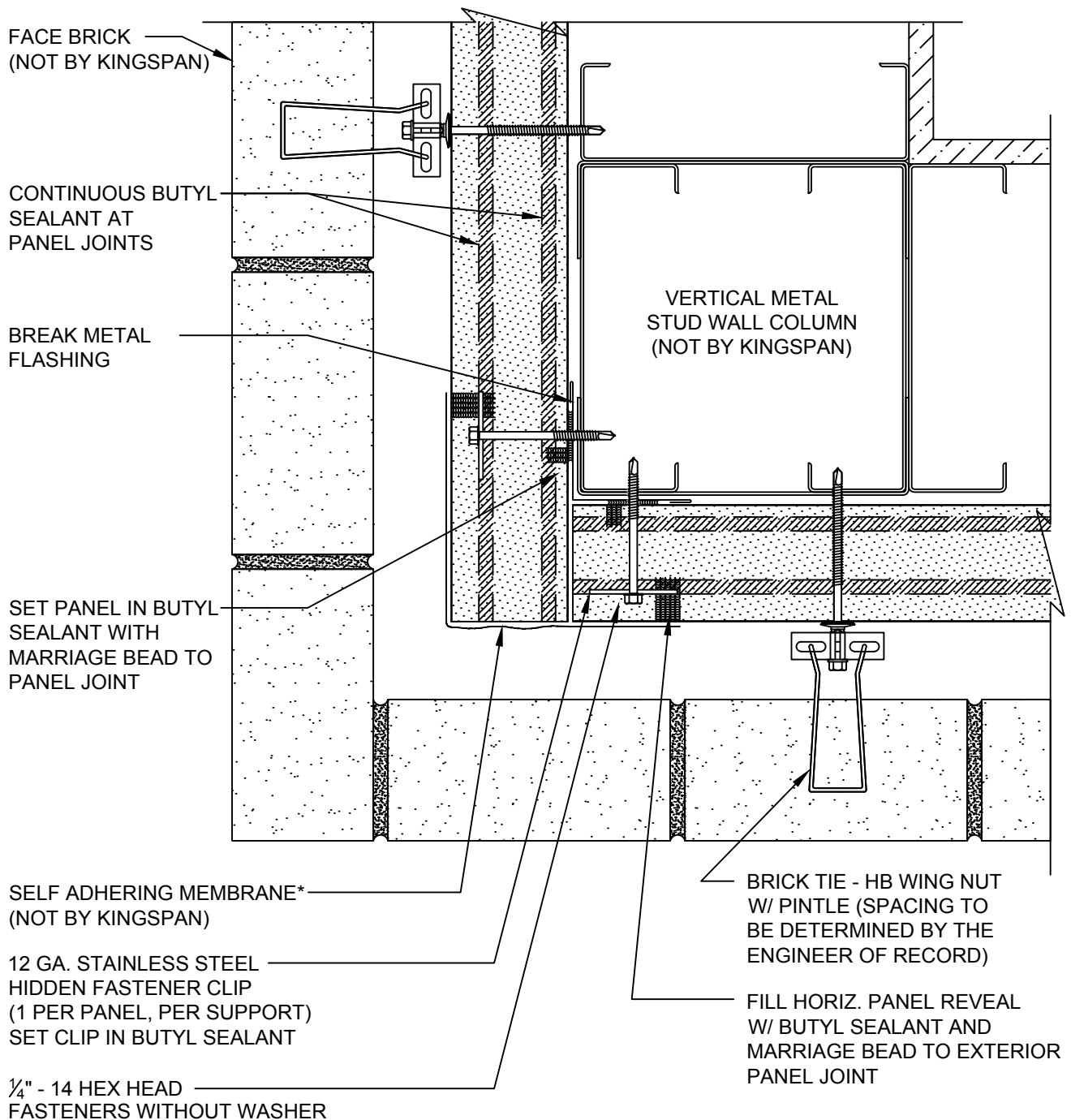
DETAIL #: KPH-BS-03-BRICK

DATE: 2019


Kingspan
Insulated Panels

www.kingspanpanels.us
www.kingspanpanels.ca

KARRIER™ PANEL - BRICK



NOTES:

- 1) USE A METAL FILE TO REMOVE ANY BURRS AT PANEL EDGES BEFORE INSTALLING MEMBRANE
- 2) ARCHITECT AND/OR CONTRACTOR MUST VERIFY COMPATIBILITY OF MEMBRANE MATERIALS WITH ADJOINING SEALANT MATERIALS

OUTSIDE CORNER

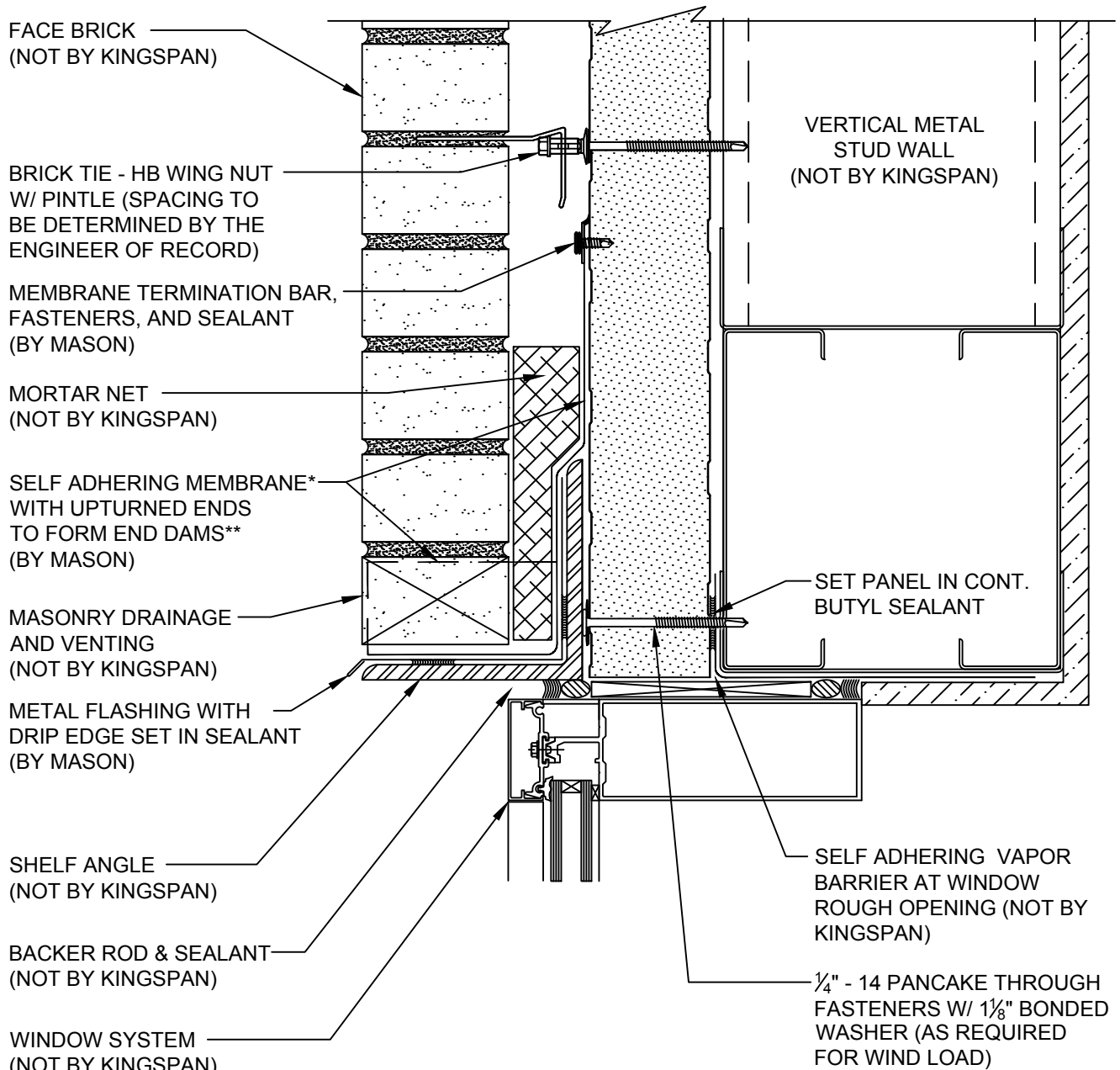
DETAIL #: KPH-OC-01-BRICK

DATE: 2019

Kingspan
Insulated Panels

www.kingspanpanels.us
www.kingspanpanels.ca

KARRIER™ PANEL - BRICK



NOTES:

- 1)* CARE SHOULD BE TAKEN TO AVOID PLACING VERTICAL JOINT REVEALS ABOVE WINDOW/DOOR LOCATIONS WHERE POSSIBLE. IF A VERTICAL JOINT REVEAL EXISTS SPECIAL CARE MUST BE USED TO MARRY THE HORIZONTAL MEMBRANE (BY MASON) TO THE VERTICAL MEMBRANE APPLIED AT THE VERTICAL PANEL BUTT JOINT LOCATIONS.
- 2)** MEMBRANE LINED METAL FLASHING PAN WITH SEALED END DAMS OR CORROSION RESISTANT PAN WITH SOLDERED/SEALED END DAMS ACCEPTABLE ALTERNATES
- 3) ARCHITECT AND/OR CONTRACTOR MUST VERIFY COMPATIBILITY OF MEMBRANE MATERIALS WITH ADJOINING SEALANT MATERIALS

FRAMED OPENING
HEADER CONDITION

DETAIL #: KPH-FO-01-BRICK

DATE: 2019



www.kingspanpanels.us
www.kingspanpanels.ca

KARRIER™ PANEL - BRICK

MIN. 5" WIDE CONTINUOUS
MEMBRANE AT VERTICAL
REVEAL

CONTINUOUS BUTYL SEALANT
AT BOTH PANEL JOINTS

FILL HORIZ. PANEL REVEAL
W/ BUTYL SEALANT AND
MARRIAGE BEAD TO EXTERIOR
PANEL JOINT

INSTALL CLIP/FASTENER AT
PANEL ENDS PRIOR TO
INSTALLATION OF MEMBRANE

MIN. 5" WIDE MEMBRANE AT
VERTICAL REVEAL (SEE VERTICAL
PANEL JOINT - SECTION)
LAP MIN. 3" VERTICALLY ONTO
MENDING PLATE

3" MIN.
LAP

MEMBRANE TERMINATION BAR,
FASTENERS, AND SEALANT
(BY MASON)

SELF ADHERING MEMBRANE
WITH UPTURNED ENDS
TO FORM END DAMS
(BY MASON) - SEE WINDOW
HEADER DETAIL

INSET WINDOW DETAIL FOR REFERENCE

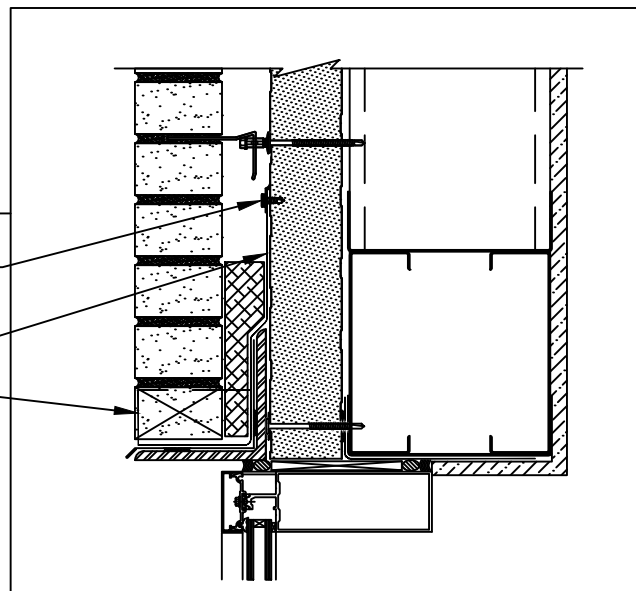
MEMBRANE TERMINATION BAR,
FASTENERS, AND SEALANT
(BY MASON)

SELF ADHERING MEMBRANE
WITH UPTURNED ENDS
TO FORM END DAMS
(BY MASON) - SEE WINDOW
HEADER DETAIL

CONTINUOUS MENDING
PLATE

CONTINUOUS BUTYL
SEALANT AT VERTICAL
PANEL BUTT JOINT

VERTICAL METAL
STUD WALL
(NOT BY KINGSPAN)



NOTE: BRICK AND PANEL FASTENING NOT SHOW FOR CLARITY

VERTICAL JOINT
TRANSITION TO F.O.
HEADER MEMBRANE

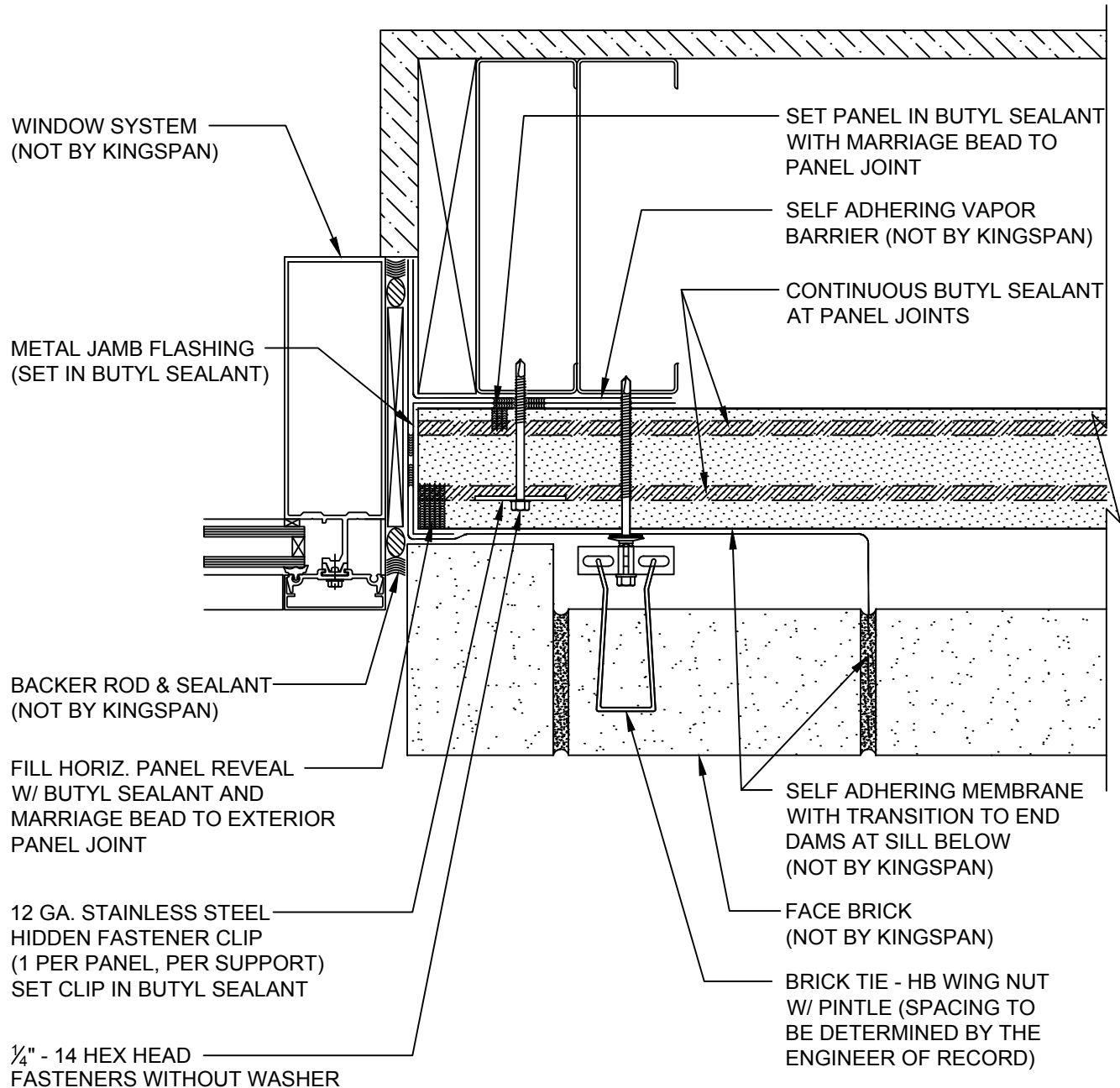
DETAIL #: KPH-FO-02-BRICK

DATE: 2019

Kingspan
Insulated Panels

www.kingspanpanels.us
www.kingspanpanels.ca

KARRIER™ PANEL - BRICK



NOTES:

- 1) ARCHITECT AND/OR CONTRACTOR MUST VERIFY COMPATIBILITY OF MEMBRANE MATERIALS WITH ADJOINING SEALANT MATERIALS

**FRAMED OPENING
JAMB CONDITION**

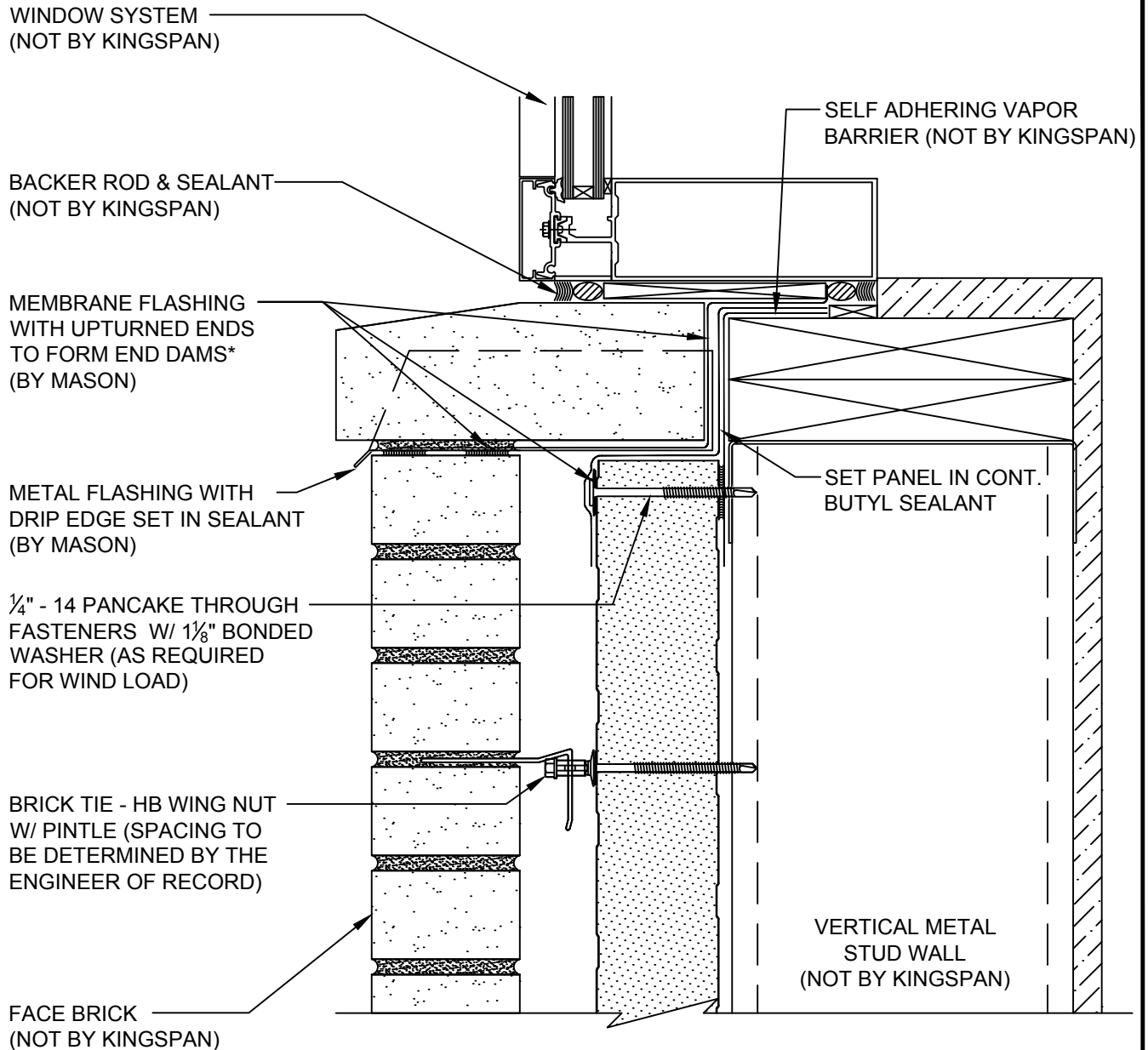
DETAIL #: KPH-FO-03-BRICK

DATE: 2019



www.kingspanpanels.us
www.kingspanpanels.ca

KARRIER™ PANEL - BRICK



NOTES:

- 1)** MEMBRANE LINED METAL FLASHING PAN WITH SEALED END DAMS OR CORROSION RESISTANT PAN WITH SOLDERED/SEALED END DAMS ACCEPTABLE ALTERNATES
- 2) USE A METAL FILE TO REMOVE ANY BURRS AT PANEL EDGES BEFORE INSTALLING MEMBRANE
- 3) ARCHITECT AND/OR CONTRACTOR MUST VERIFY COMPATIBILITY OF MEMBRANE MATERIALS WITH ADJOINING SEALANT MATERIALS

**FRAMED OPENING
SILL CONDITION**

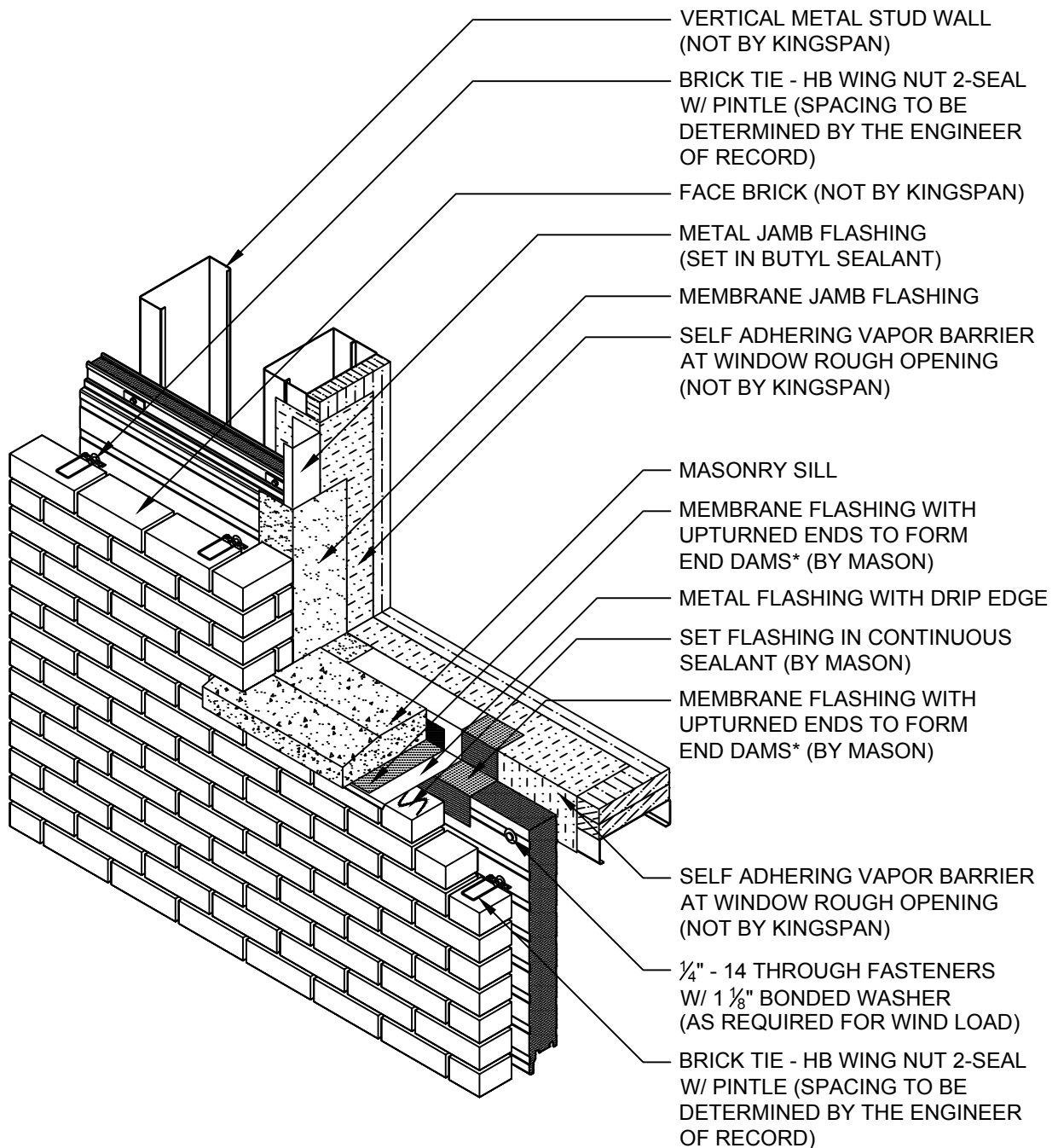
DETAIL #: KPH-FO-04-BRICK

DATE: 2019



www.kingspanpanels.us
www.kingspanpanels.ca

KARRIER™ PANEL - BRICK



NOTES:

- 1)** MEMBRANE LINED METAL FLASHING PAN WITH SEALED END DAMS OR CORROSION RESISTANT PAN WITH SOLDERED/SEALED END DAMS ACCEPTABLE ALTERNATES
- 2) USE A METAL FILE TO REMOVE ANY BURRS AT PANEL EDGES BEFORE INSTALLING MEMBRANE
- 3) ARCHITECT AND/OR CONTRACTOR MUST VERIFY COMPATIBILITY OF MEMBRANE MATERIALS WITH ADJOINING SEALANT MATERIALS

**F.O. JAMB TO SILL
ASSEMBLY**

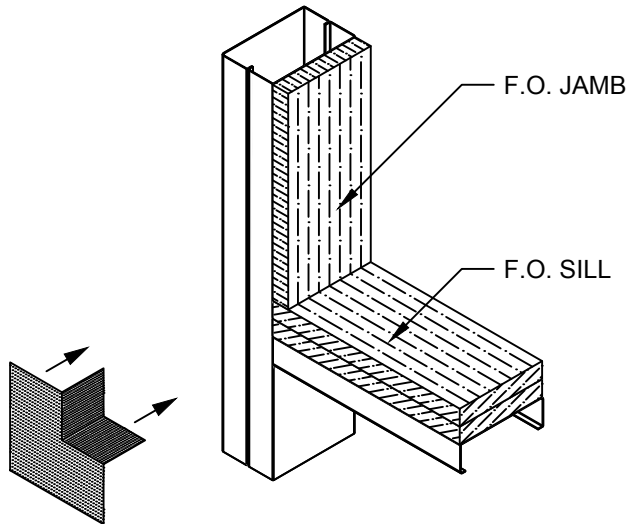
DETAIL #: KPH-FO-05-BRICK

DATE: 2019

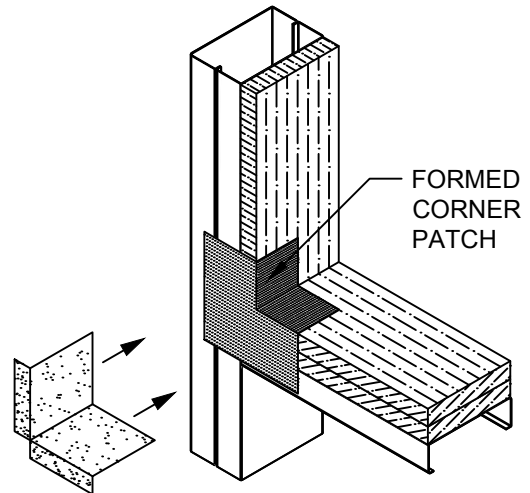


www.kingspanpanels.us
www.kingspanpanels.ca

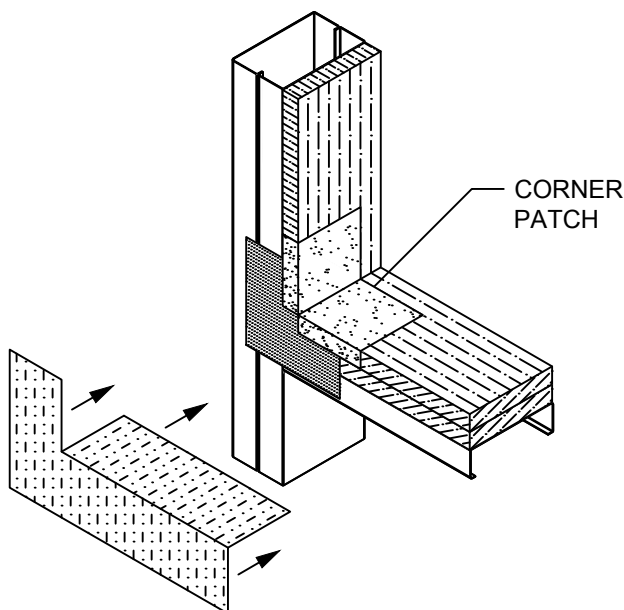
KARRIER™ PANEL - BRICK



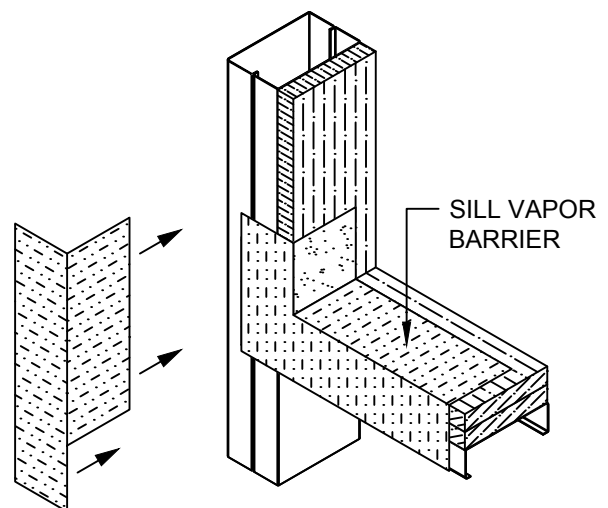
FORMED CORNER PATCH
SELF ADHERING VAPOR BARRIER



MEMBRANE CORNER PATCH
SELF ADHERING VAPOR BARRIER



CONTINUOUS SILL
SELF ADHERING VAPOR BARRIER



CONTINUOUS JAMB
SELF ADHERING VAPOR BARRIER

NOTES:

- 1)* CARE SHOULD BE TAKEN TO AVOID PLACING VERTICAL JOINT REVEALS ABOVE WINDOW / DOOR LOCATIONS WHERE POSSIBLE. IF A VERTICAL JOINT REVEAL EXISTS SPECIAL CARE MUST BE USED TO MARRY THE HORIZONTAL MEMBRANE (BY MASON) TO THE VERTICAL MEMBRANE APPLIED AT THE VERTICAL PANEL BUTT JOINT LOCATIONS.
- 2) ARCHITECT AND/OR CONTRACTOR MUST VERIFY COMPATIBILITY OF MEMBRANE MATERIALS WITH ADJOINING SEALANT MATERIALS
- 3) REFER TO SELF ADHERING VAPOR BARRIER MANUFACTURER'S INSTRUCTION & GUIDELINES FOR RECOMMENDED INSTALLATION.

F.O. JAMB TO SILL
FLASHING

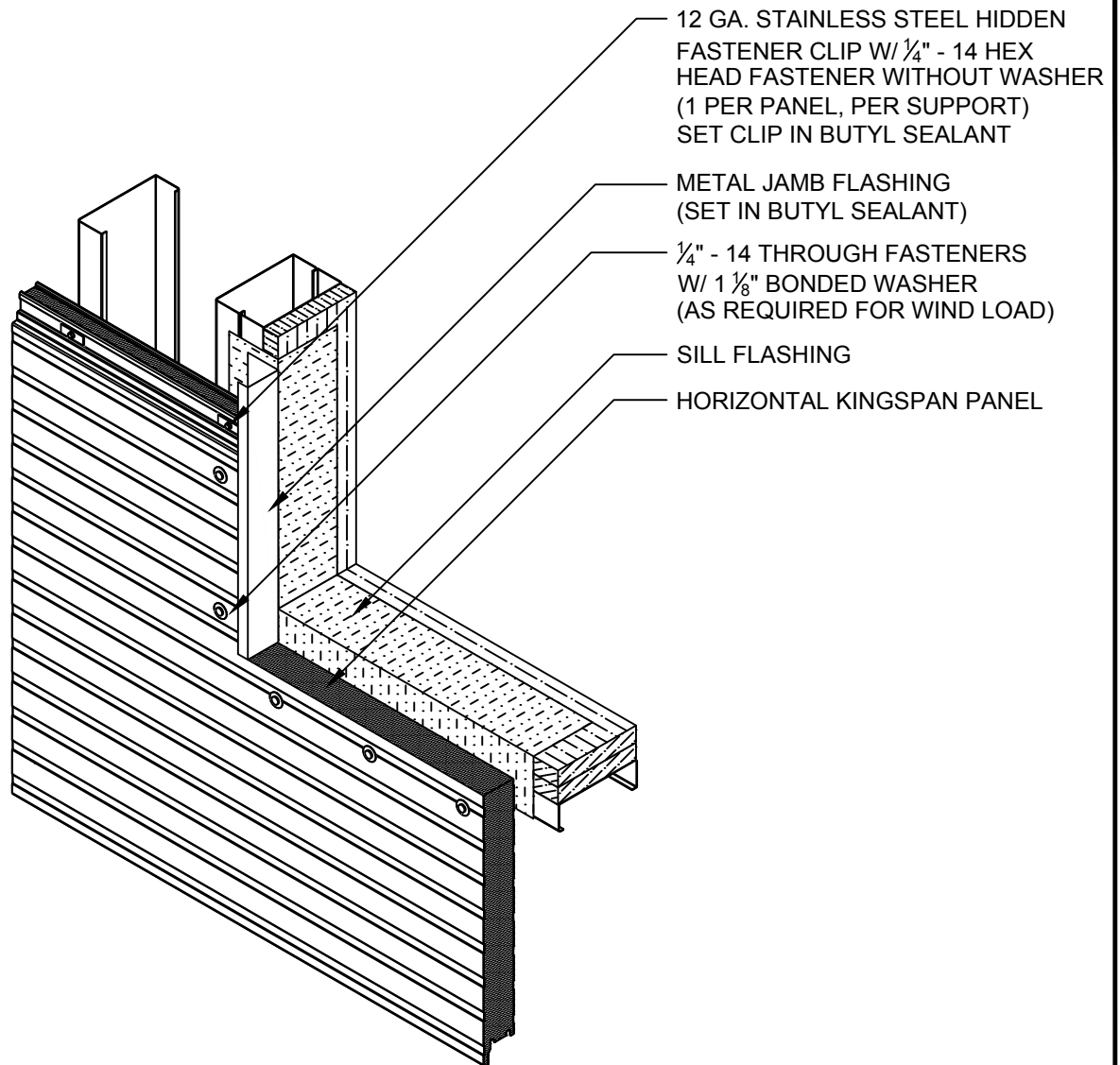
DETAIL #: KPH-FO-06-BRICK

DATE: 2019



www.kingspanpanels.us
www.kingspanpanels.ca

KARRIER™ PANEL - BRICK



METAL JAMB
FLASHING

F.O. JAMB TRIM

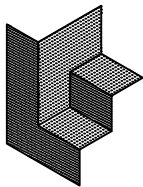
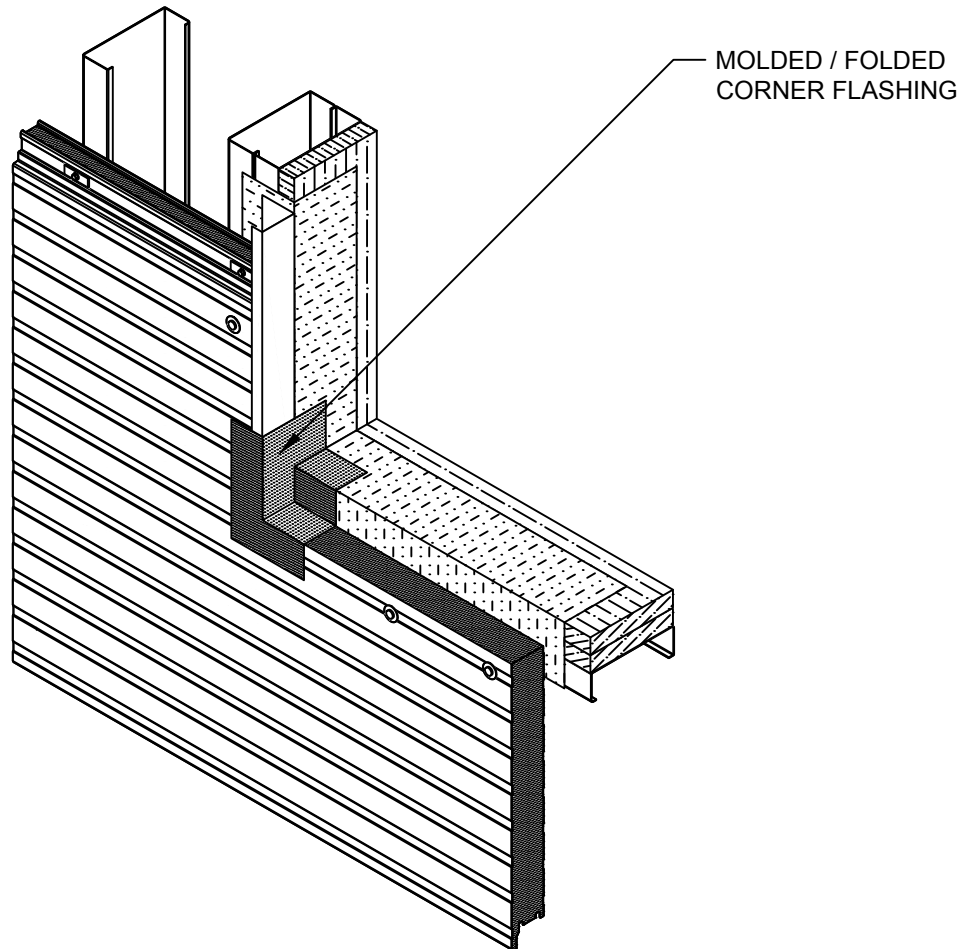
DETAIL #: KPH-FO-07-BRICK

DATE: 2019



www.kingspanpanels.us
www.kingspanpanels.ca

KARRIER™ PANEL - BRICK



MOLDED / FOLDED
CORNER FLASHING

F.O. JAMB TO SILL
CORNER FLASHING

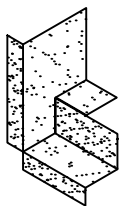
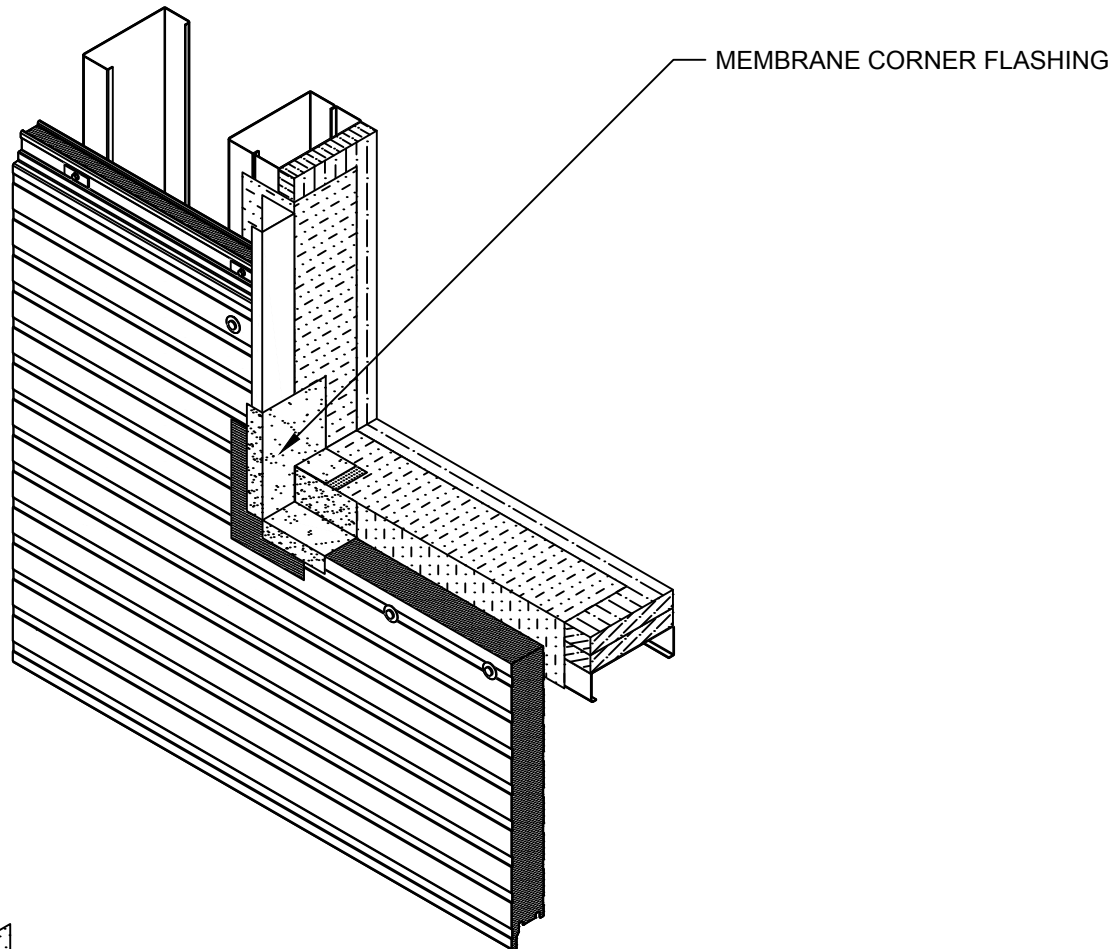
DETAIL #: KPH-FO-08-BRICK

DATE: 2019



www.kingspanpanels.us
www.kingspanpanels.ca

KARRIER™ PANEL - BRICK



MEMBRANE
CORNER FLASHING

F.O. JAMB TO SILL
CORNER MEMBRANE

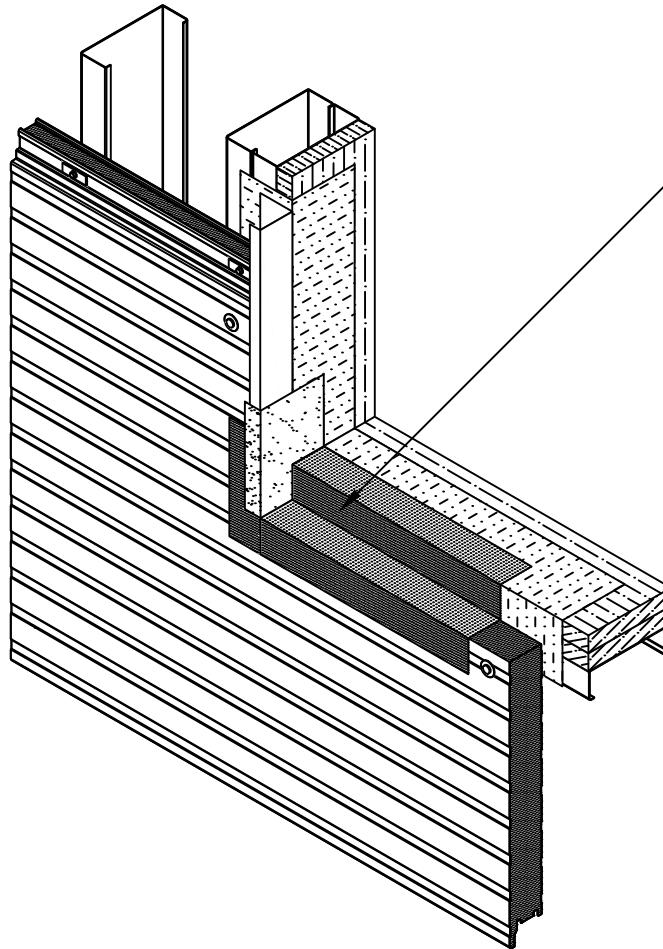
DETAIL #: KPH-FO-09-BRICK

DATE: 2019

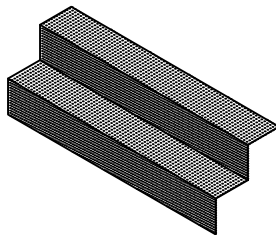


www.kingspanpanels.us
www.kingspanpanels.ca

KARRIER™ PANEL - BRICK



MEMBRANE FLASHING WITH
UPTURNED ENDS TO FORM
END DAMS* (BY MASON)



MEMBRANE
SILL FLASHING

F.O. SILL MEMBRANE

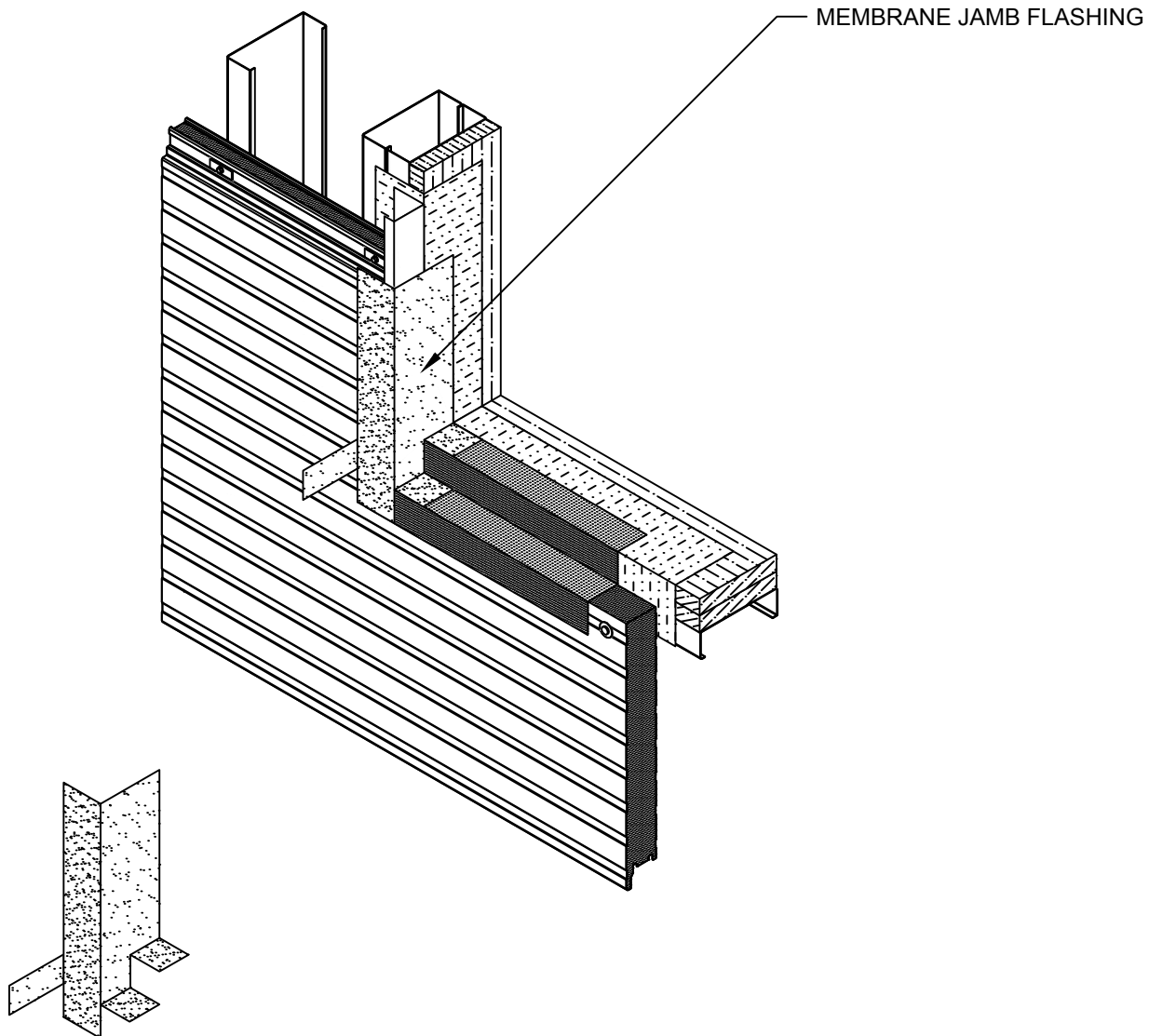
DETAIL #: KPH-FO-10-BRICK

DATE: 2019



www.kingspanpanels.us
www.kingspanpanels.ca

KARRIER™ PANEL - BRICK



F.O. JAMB MEMBRANE

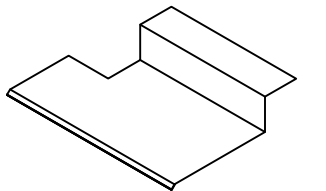
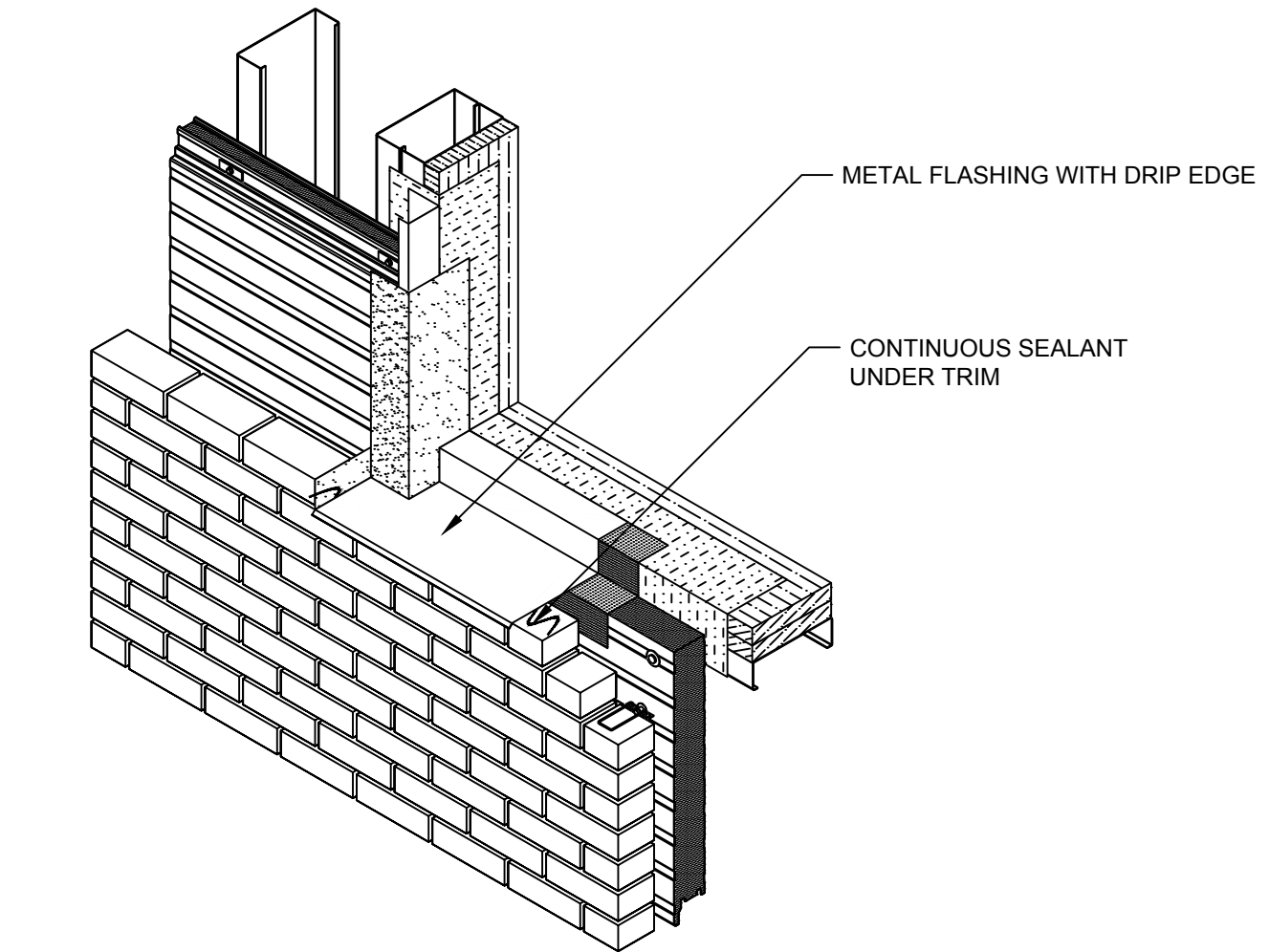
DETAIL #: KPH-FO-11-BRICK

DATE: 2019


Kingspan
Insulated Panels

www.kingspanpanels.us
www.kingspanpanels.ca

KARRIER™ PANEL - BRICK



F.O. SILL TRIM

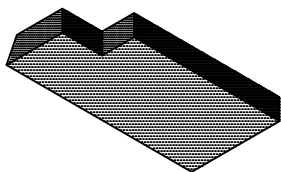
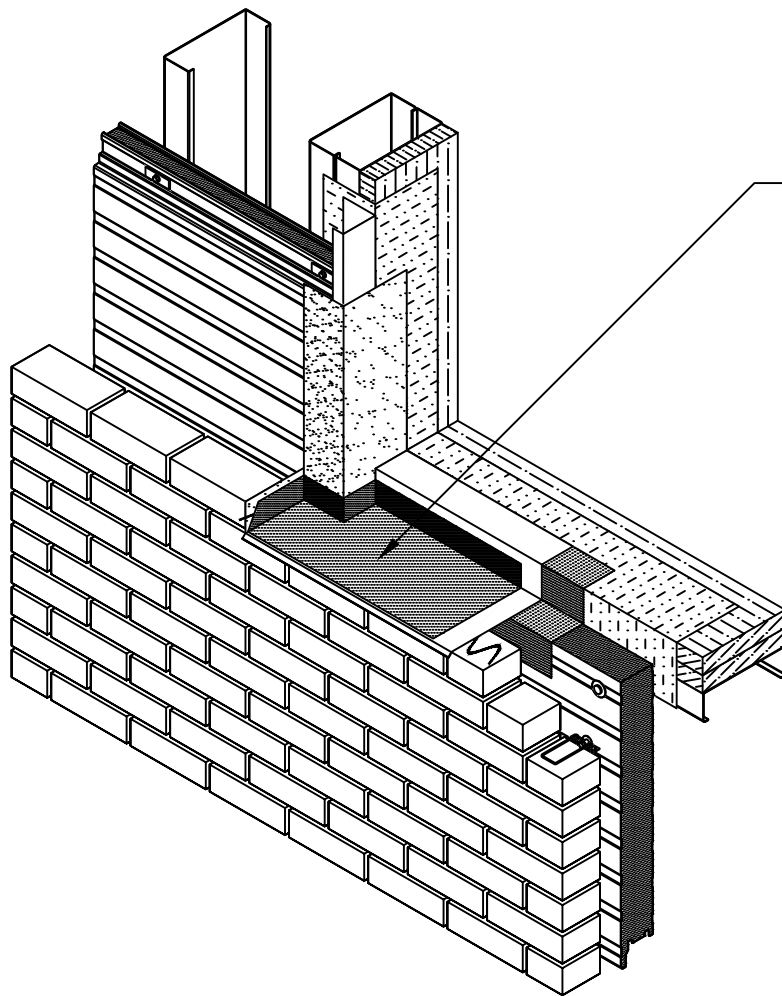
DETAIL #: KPH-FO-12-BRICK

DATE: 2019



www.kingspanpanels.us
www.kingspanpanels.ca

KARRIER™ PANEL - BRICK



MEMBRANE FLASHING

F.O. SILL PAN

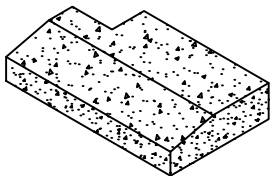
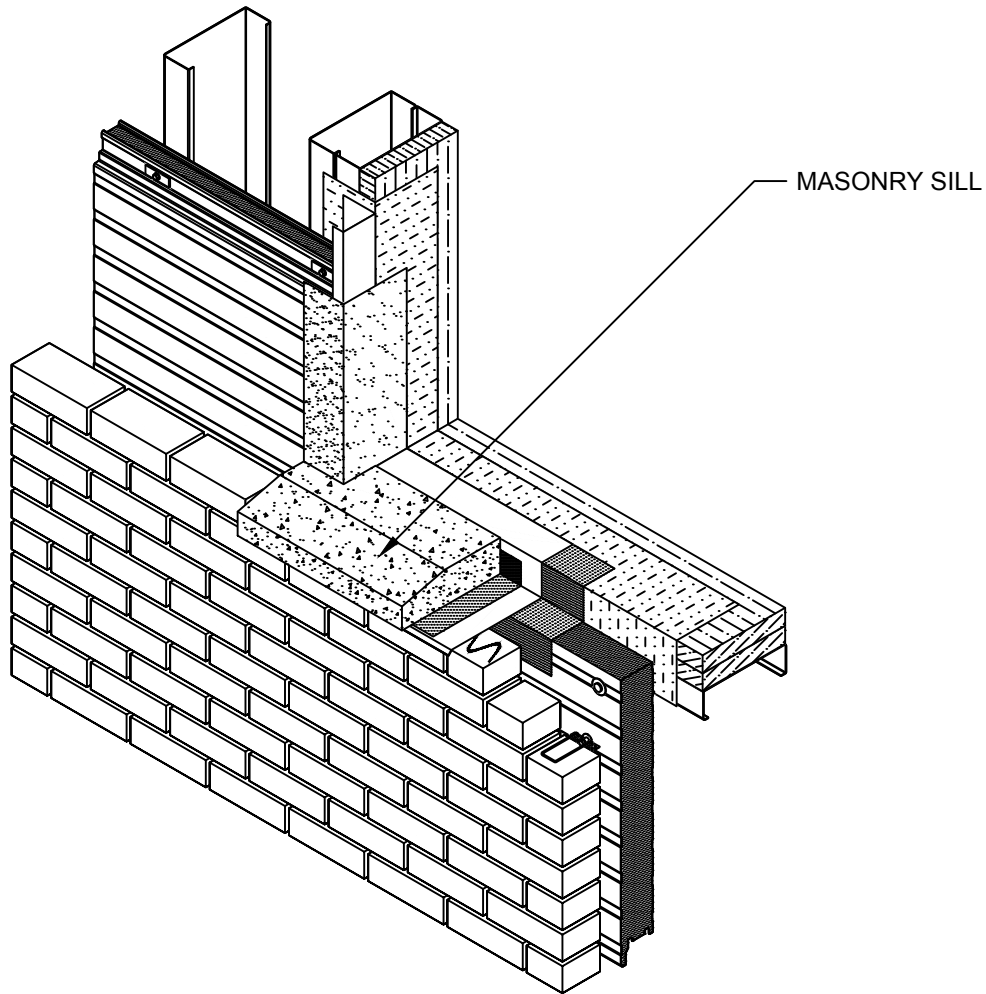
DETAIL #: KPH-FO-13-BRICK

DATE: 2019



www.kingspanpanels.us
www.kingspanpanels.ca

KARRIER™ PANEL - BRICK



MASONRY SILL

F.O. MASONRY SILL

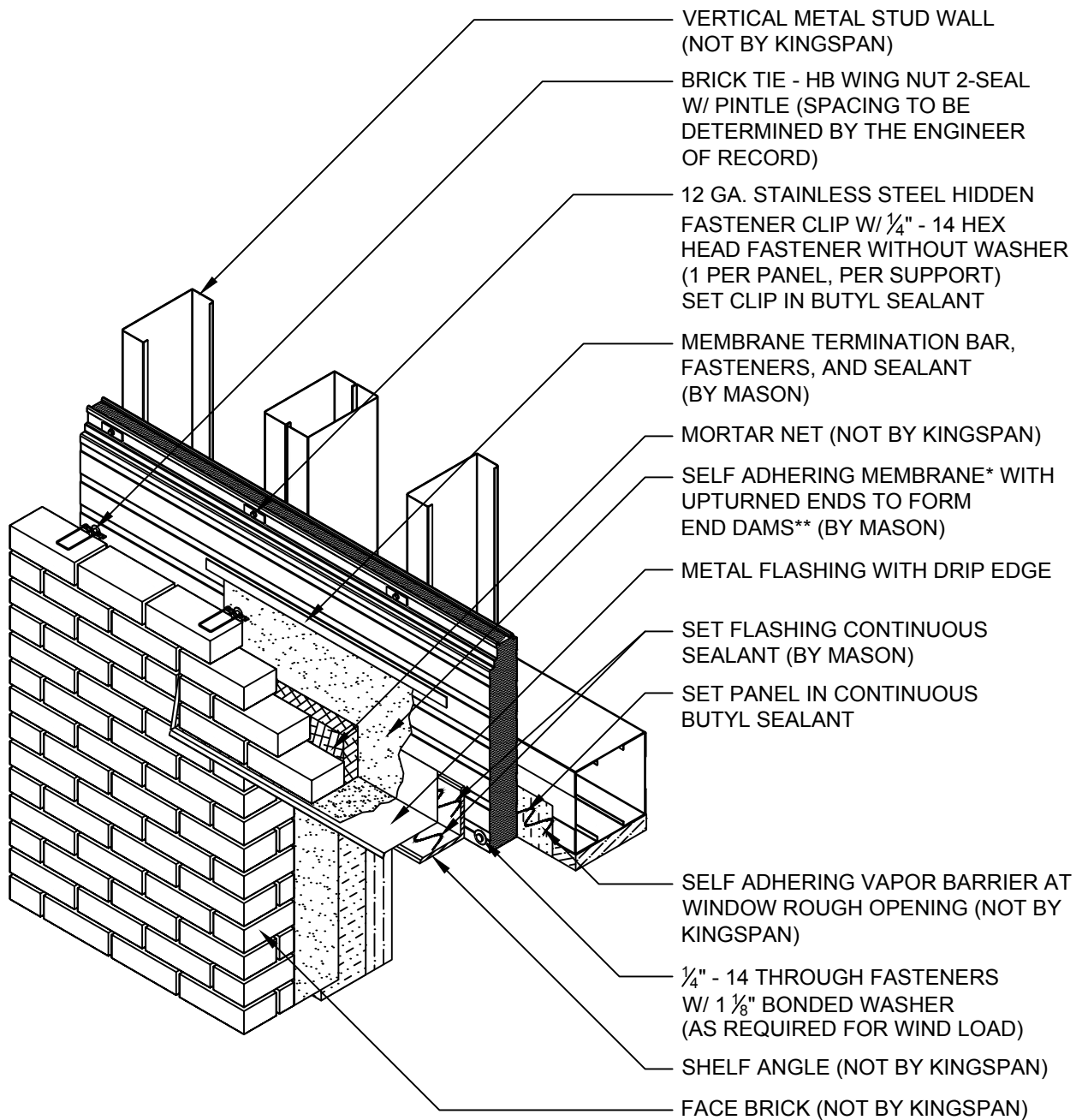
DETAIL #: KPH-FO-14-BRICK

DATE: 2019



www.kingspanpanels.us
www.kingspanpanels.ca

KARRIER™ PANEL - BRICK



NOTES:

- 1)* CARE SHOULD BE TAKEN TO AVOID PLACING VERTICAL JOINT REVEALS ABOVE WINDOW/DOOR LOCATIONS WHERE POSSIBLE. IF A VERTICAL JOINT REVEAL EXISTS SPECIAL CARE MUST BE USED TO MARRY THE HORIZONTAL MEMBRANE (BY MASON) TO THE VERTICAL MEMBRANE APPLIED AT THE VERTICAL PANEL BUTT JOINT LOCATIONS.
- 2)** MEMBRANE LINED METAL FLASHING PAN WITH SEALED END DAMS OR CORROSION RESISTANT PAN WITH SOLDERED/SEALED END DAMS ACCEPTABLE ALTERNATES
- 3) ARCHITECT AND/OR CONTRACTOR MUST VERIFY COMPATIBILITY OF MEMBRANE MATERIALS WITH ADJOINING SEALANT MATERIALS

**F.O. JAMB TO HEADER
ASSEMBLY**

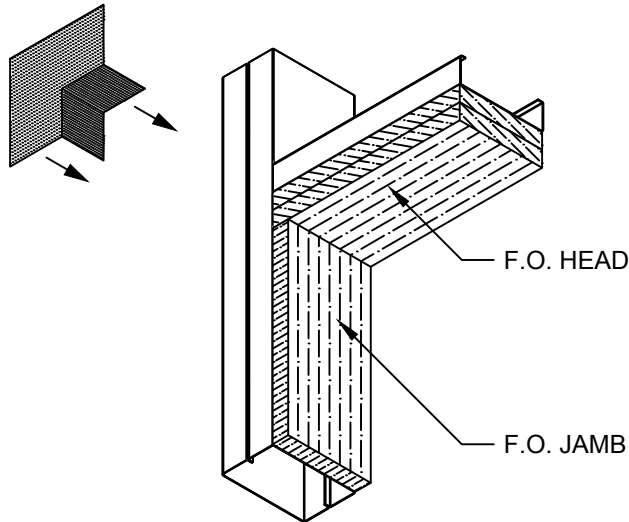
DETAIL #: KPH-FO-15-BRICK

DATE: 2019

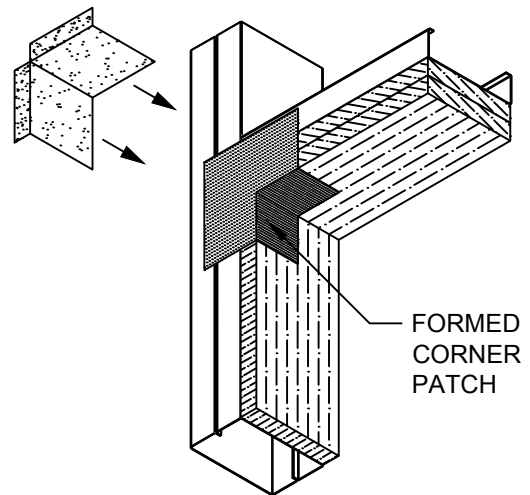


www.kingspanpanels.us
www.kingspanpanels.ca

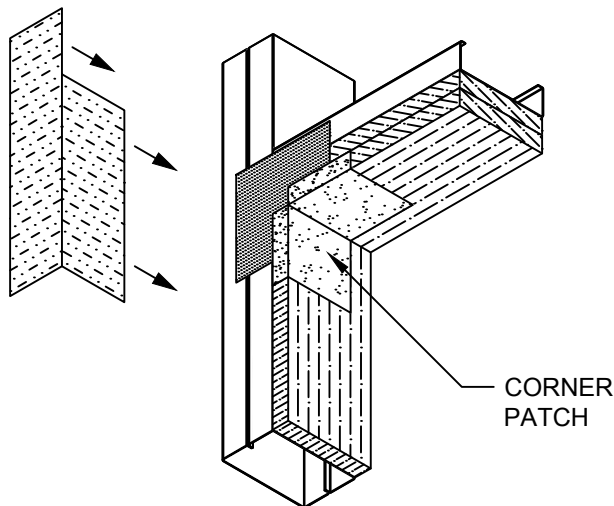
KARRIER™ PANEL - BRICK



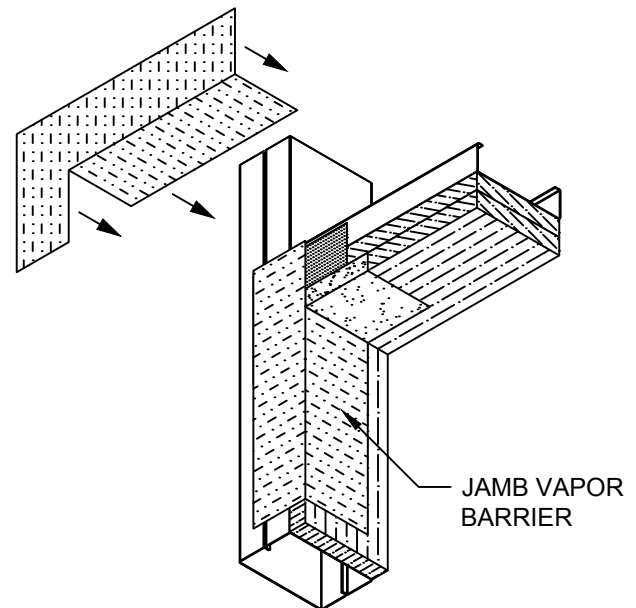
FORMED CORNER PATCH
SELF ADHERING VAPOR BARRIER



MEMBRANE CORNER PATCH
SELF ADHERING VAPOR BARRIER



CONTINUOUS JAMB
SELF ADHERING VAPOR BARRIER



CONTINUOUS HEAD
SELF ADHERING VAPOR BARRIER

NOTES:

- 1)* CARE SHOULD BE TAKEN TO AVOID PLACING VERTICAL JOINT REVEALS ABOVE WINDOW / DOOR LOCATIONS WHERE POSSIBLE. IF A VERTICAL JOINT REVEAL EXISTS SPECIAL CARE MUST BE USED TO MARRY THE HORIZONTAL MEMBRANE (BY MASON) TO THE VERTICAL MEMBRANE APPLIED AT THE VERTICAL PANEL BUTT JOINT LOCATIONS.
- 2) ARCHITECT AND/OR CONTRACTOR MUST VERIFY COMPATIBILITY OF MEMBRANE MATERIALS WITH ADJOINING SEALANT MATERIALS
- 3) REFER TO SELF ADHERING VAPOR BARRIER MANUFACTURER'S INSTRUCTION & GUIDELINES FOR RECOMMENDED INSTALLATION.

F.O. JAMB TO HEADER
FLASHING

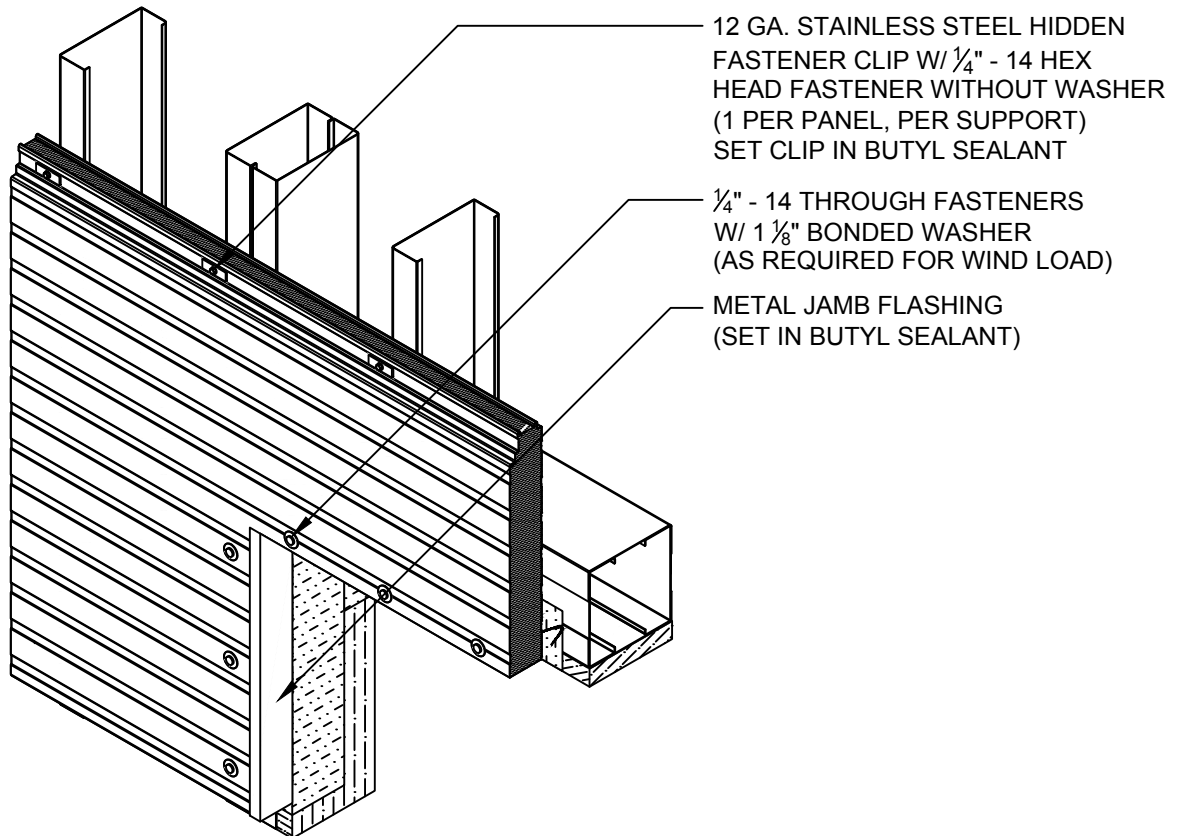
DETAIL #: KPH-FO-16-BRICK

DATE: 2019



www.kingspanpanels.us
www.kingspanpanels.ca

KARRIER™ PANEL - BRICK



METAL JAMB FLASHING

F.O. JAMB TRIM

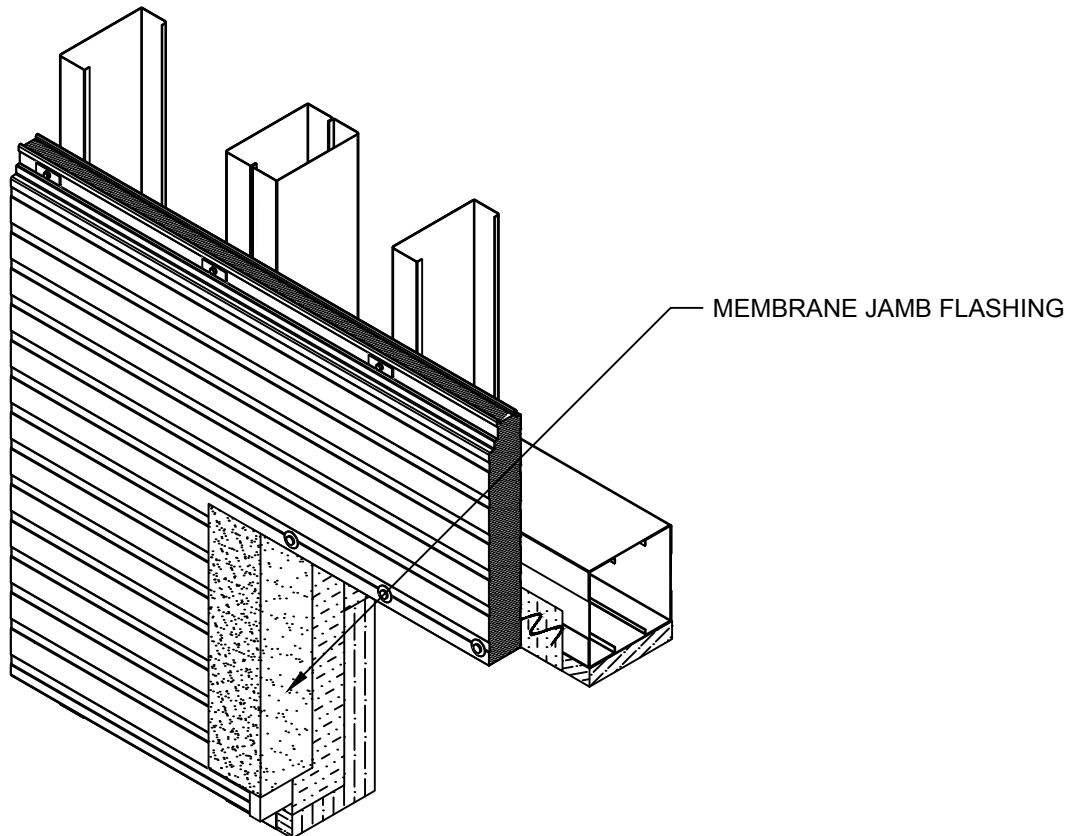
DETAIL #: KPH-FO-17-BRICK

DATE: 2019

Kingspan
Insulated Panels

www.kingspanpanels.us
www.kingspanpanels.ca

KARRIER™ PANEL - BRICK



F.O. JAMB MEMBRANE
AT HEADER

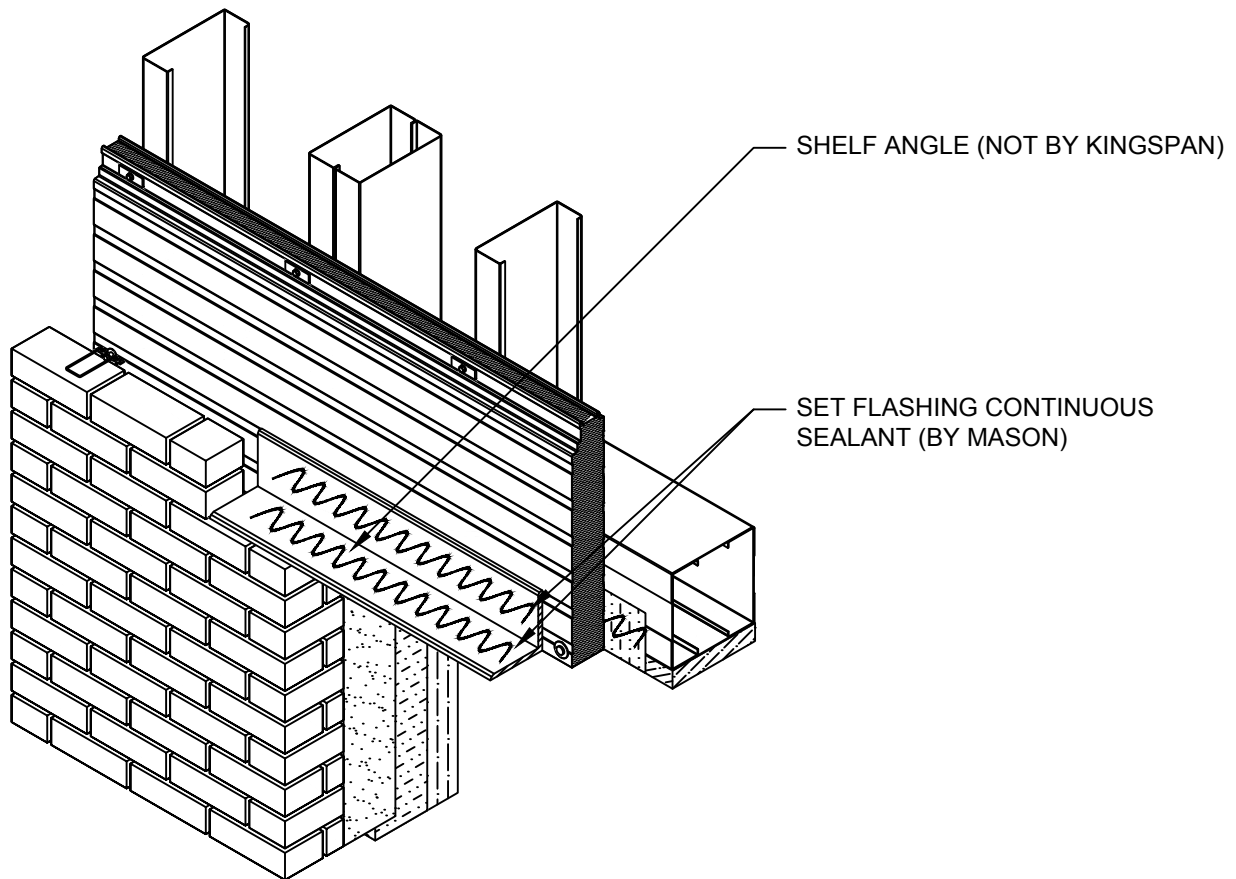
DETAIL #: KPH-FO-18-BRICK

DATE: 2019



www.kingspanpanels.us
www.kingspanpanels.ca

KARRIER™ PANEL - BRICK



F.O. SHELF ANGLE

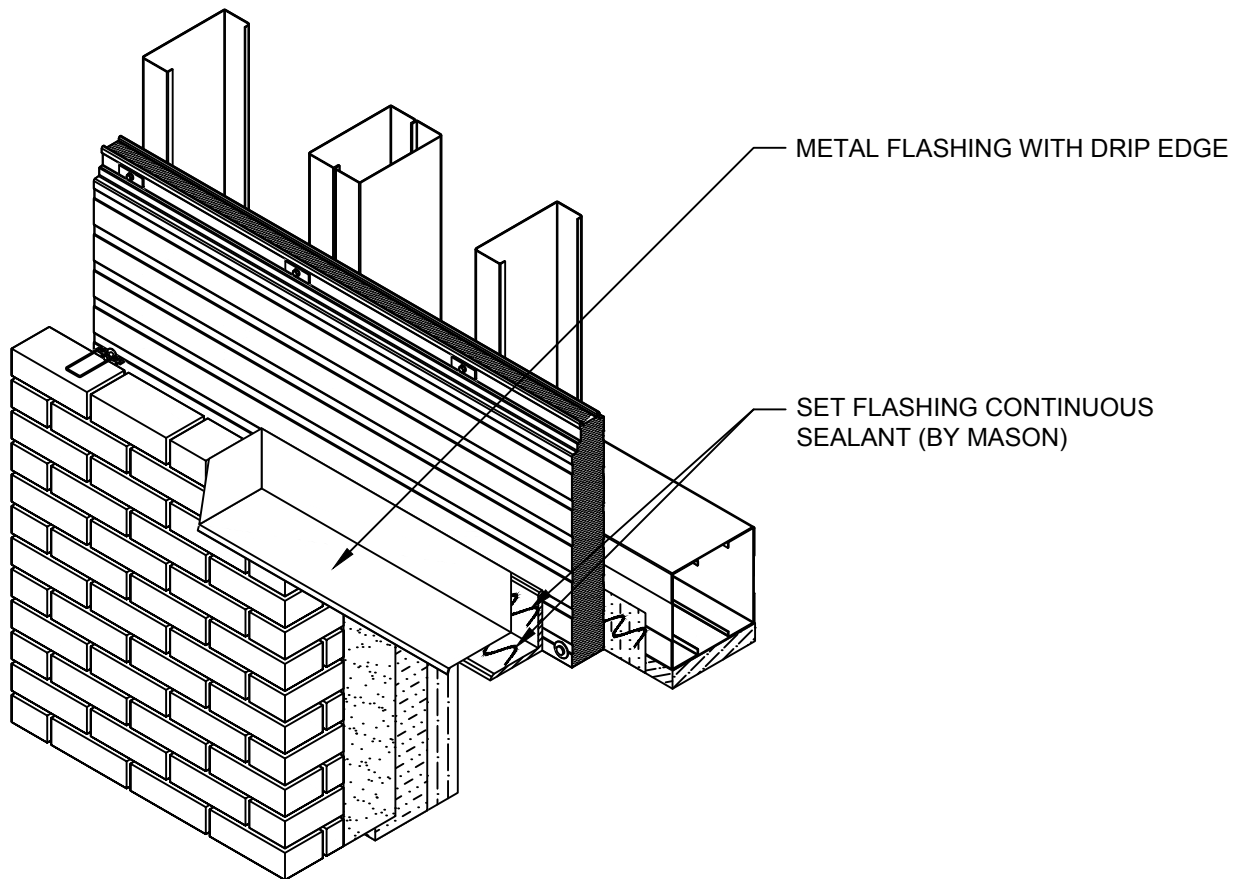
DETAIL #: KPH-FO-19-BRICK

DATE: 2019



www.kingspanpanels.us
www.kingspanpanels.ca

KARRIER™ PANEL - BRICK



F.O. HEADER TRIM

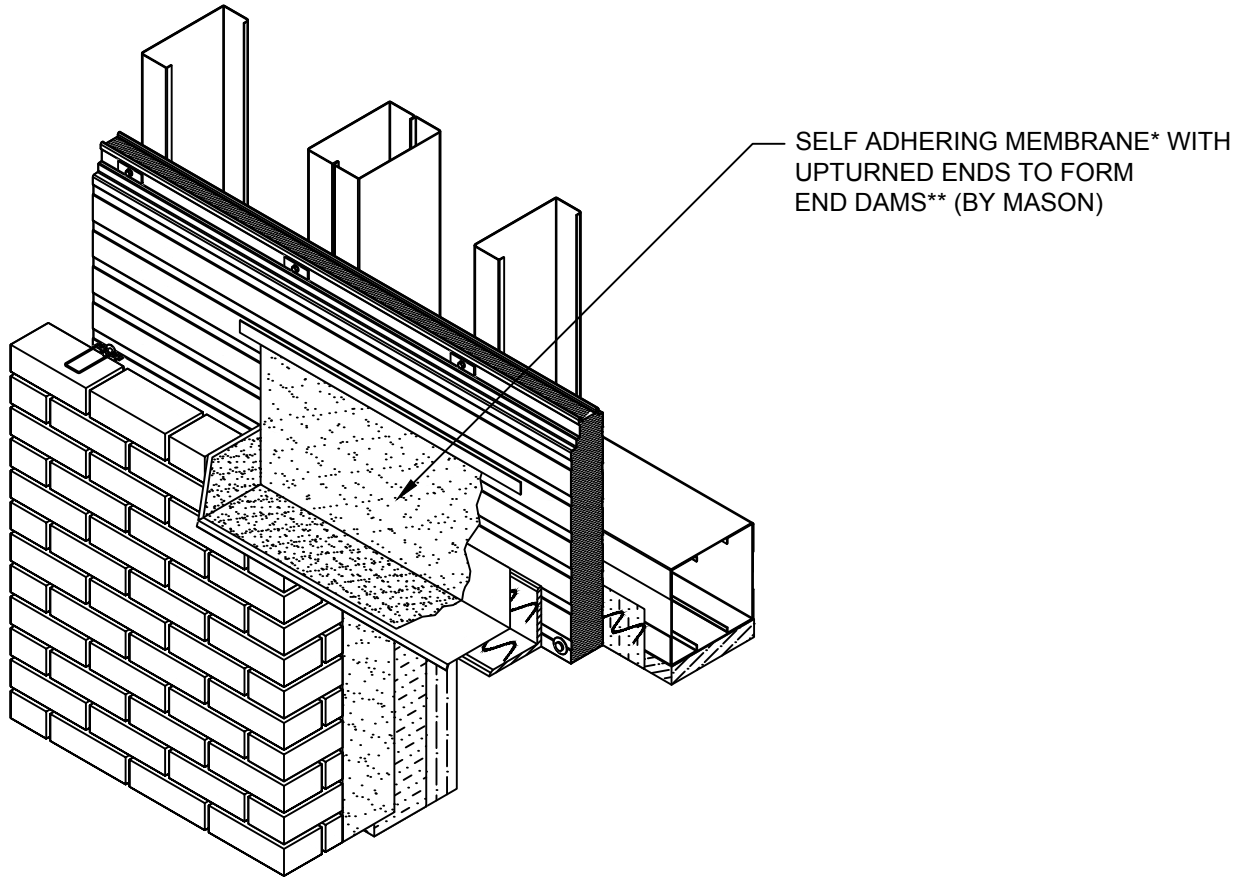
DETAIL #: KPH-FO-20-BRICK

DATE: 2019



www.kingspanpanels.us
www.kingspanpanels.ca

KARRIER™ PANEL - BRICK



F.O. HEADER FLASHING

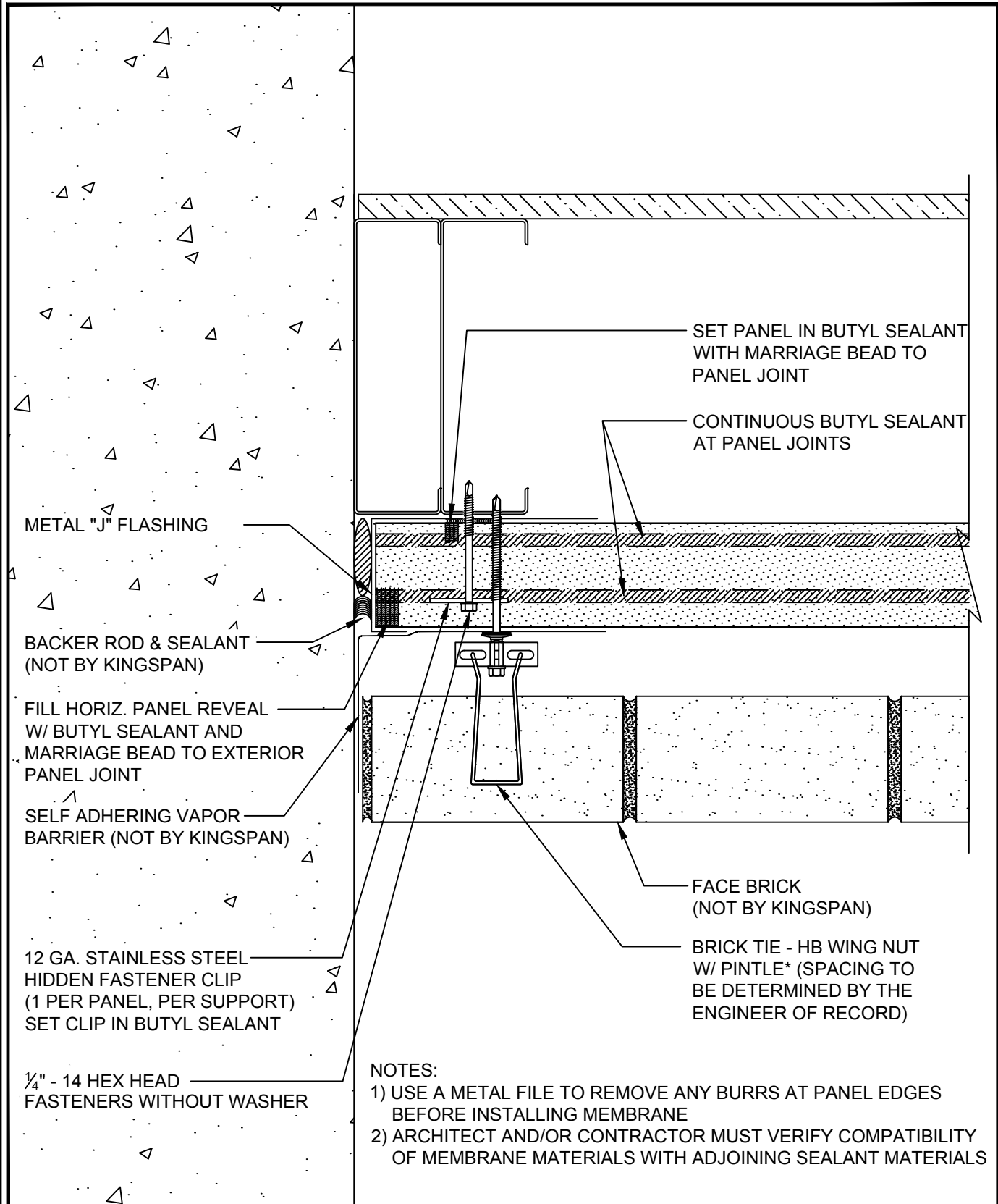
DETAIL #: KPH-FO-21-BRICK

DATE: 2019



www.kingspanpanels.us
www.kingspanpanels.ca

KARRIER™ PANEL - BRICK



VERTICAL TRANSITION

DETAIL #: KPH-TF-01-BRICK

DATE: 2019



www.kingspanpanels.us
www.kingspanpanels.ca

KARRIER™ PANEL - BRICK

PARAPET CAP AND METAL
FLASHING CAP, SEALANT
AND WEATHER TIGHTNESS
(NOT BY KINGSPAN)

SET PANEL IN CONT.
BUTYL SEALANT

SELF ADHERING VAPOR
BARRIER (NOT BY KINGSPAN)

WRAP ROOF MEMBRANE
OVER PANEL FACE
(NOT BY KINGSPAN)

MASONRY FASTENER
(AS REQUIRED FOR WIND
LOAD) (NOT BY KINGSPAN)

BRICK TIE - HB WING NUT
W/ PINTLE TO MASONRY
(SPACING TO BE DETERMINED
BY THE ENGINEER OF RECORD)

FACE BRICK
(NOT BY KINGSPAN)

SLIP SHEET TO PROTECT
PANELS (NOT BY KINGSPAN)

8" HOLLOW CONC. BLOCK
(NOT BY KINGSPAN)

NOTES:

- 1) USE A METAL FILE TO REMOVE ANY BURRS AT PANEL EDGES BEFORE INSTALLING MEMBRANE
- 2) ARCHITECT AND/OR CONTRACTOR MUST VERIFY COMPATIBILITY OF MEMBRANE MATERIALS WITH ADJOINING SEALANT MATERIALS

PARAPET CONDITION

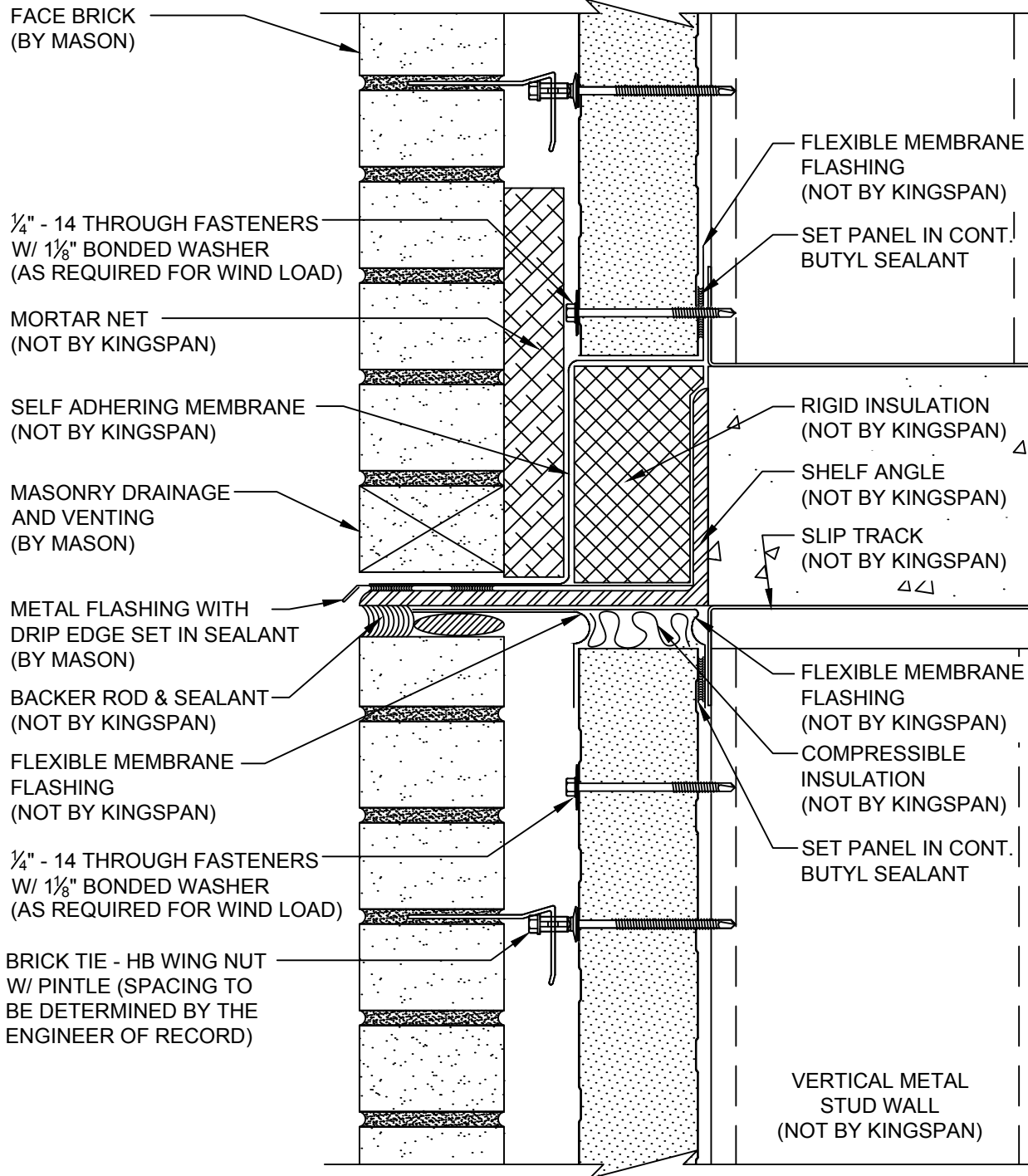
DETAIL #: KPH-PR-01-BRICK

DATE: 2019


Kingspan
Insulated Panels

www.kingspanpanels.us
www.kingspanpanels.ca

KARRIER™ PANEL - BRICK



NOTES:

- 1) USE A METAL FILE TO REMOVE ANY BURRS AT PANEL EDGES BEFORE INSTALLING MEMBRANE
- 2) ARCHITECT AND/OR CONTRACTOR MUST VERIFY COMPATIBILITY OF MEMBRANE MATERIALS WITH ADJOINING SEALANT MATERIALS

SHELF ANGLE

DETAIL #: KPH-SJ-01-BRICK

DATE: 2019



www.kingspanpanels.us
www.kingspanpanels.ca